

# *Using TIIG to enhance the Joint Strategic Needs Assessment – Focus on Falls*

**Richard Jones**  
**Lead Public Health Epidemiologist**  
**Liverpool City Council**



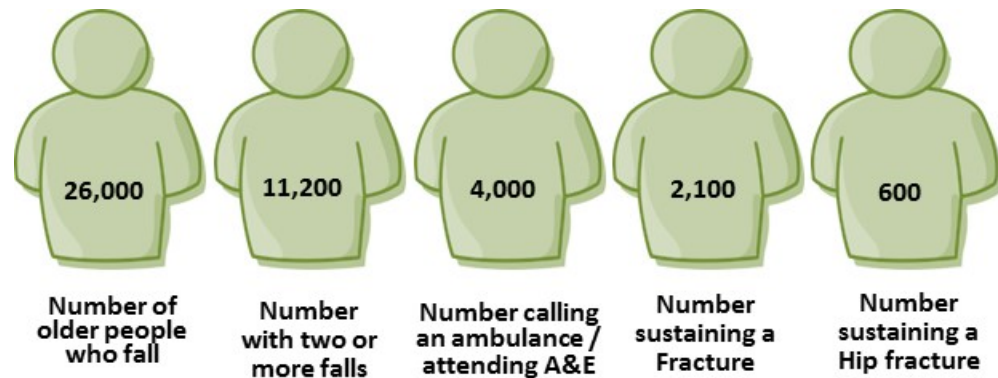
## JSNA – Falls & Fragility Fracture (Jan 2018)

- Falls mortality rate among older people is the second highest in England
- 28% increase since 2001.
- Highest emergency admissions for falls in older people
- Widening inequalities gap
- Cost of falls is conservatively estimated at £9M per annum in the city



## JSNA analysis without TIIG data

Estimates show that around 4,000 people aged 65 and over in Liverpool will call an ambulance each year and a similar number will attend Accident and Emergency (A&E).



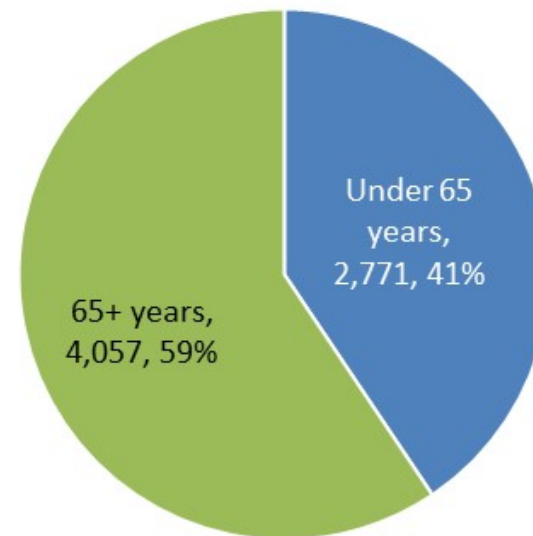
Source: Department of Health, 2009. Fracture Prevention Services: An Economic Evaluation





## Analysis using TIIG data – Enhanced Data

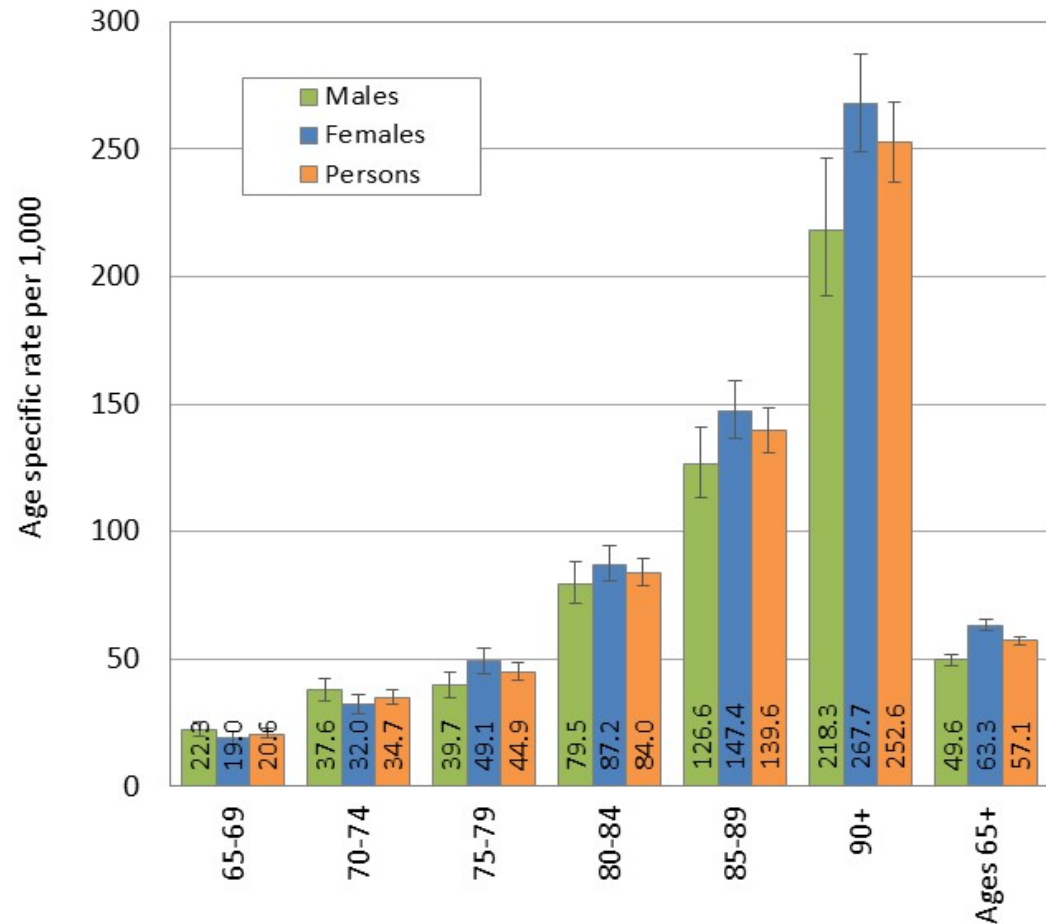
- In 2016/17 there were 6,828 ambulance callouts due to falls in Liverpool.
- People aged 65 and over accounted for 4,057 (59%) of callouts.





## Analysis using TIIG data

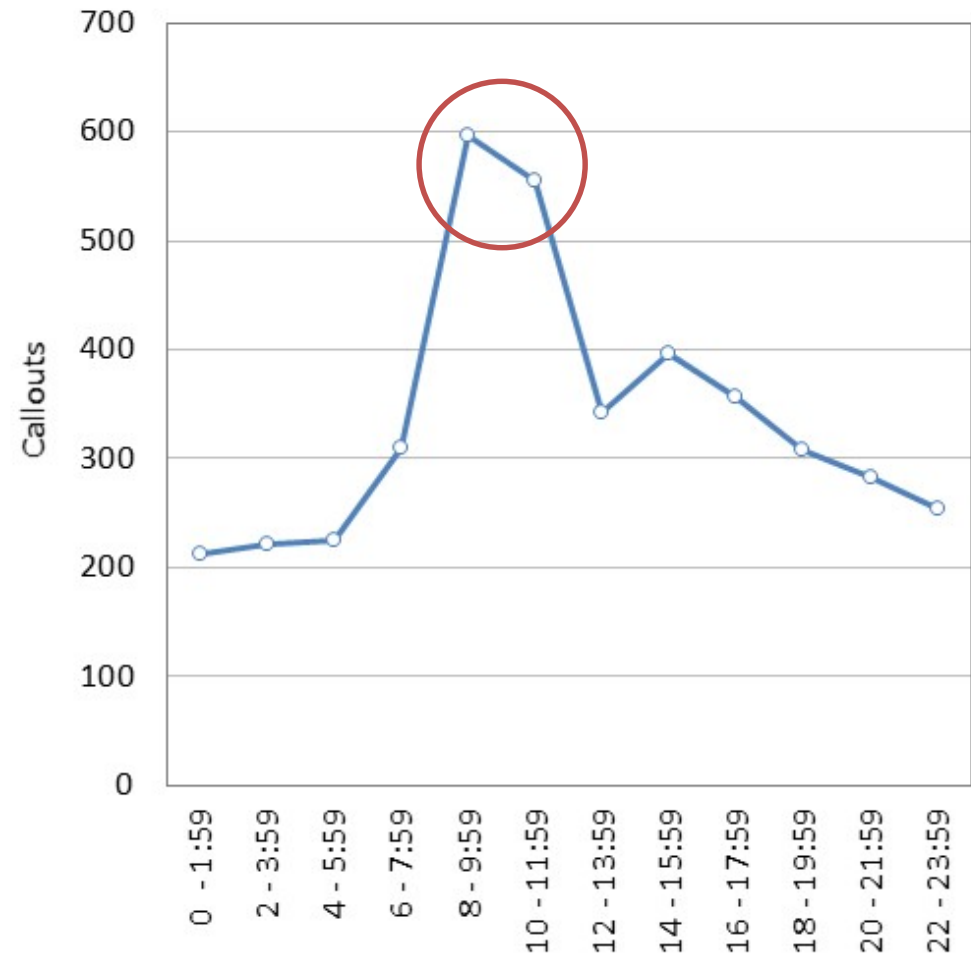
- Callout rates per 1,000 residents ages 65+ were significantly higher in females compared to males.
- Callout rates generally increase with increasing age.





## Analysis using TIIG data

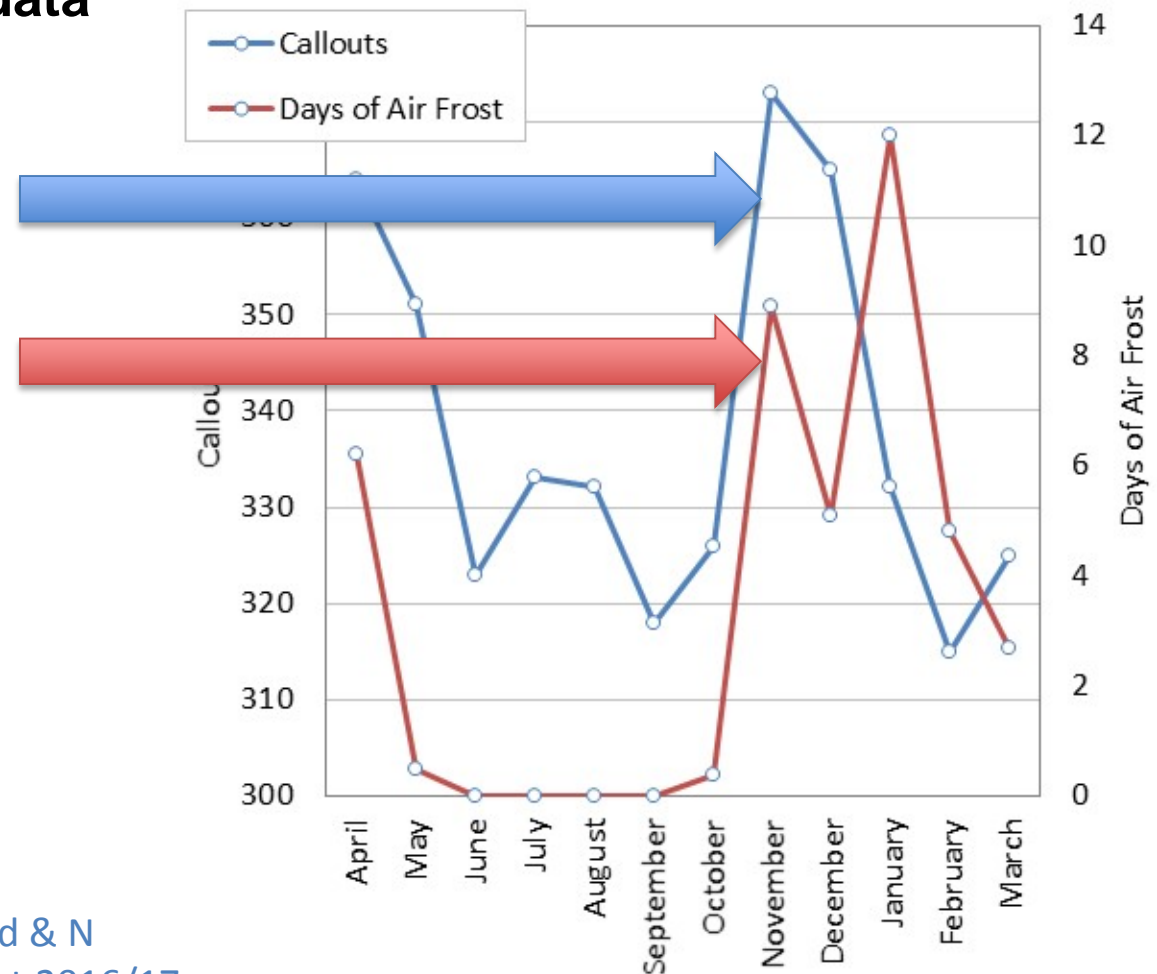
- Ambulance callouts for falls among older people were at their highest in the mornings with those made between 0800 and 1200 hours accounting for more than a quarter of callouts (28.4%).





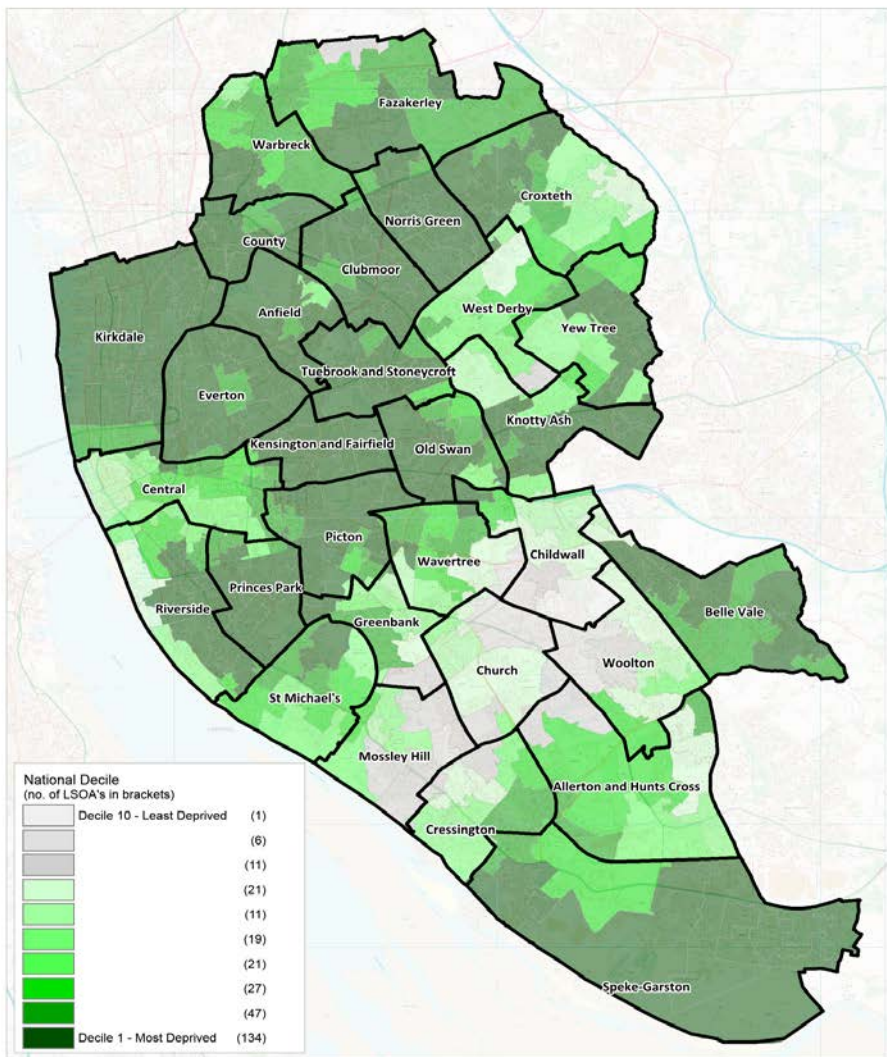
## Analysis using TIIG data

- Ambulance callouts for falls increased sharply in November.
- This corresponded with a sharp increase in average monthly days of air frost.



Source: Met Office NW England & N  
Wales Monthly Days of Air Frost 2016/17





**Index of Deprivation 2015 - Overall Index National Rank Deciles  
(Decile 1 = Most deprived)**

Date created: 21/10/2015

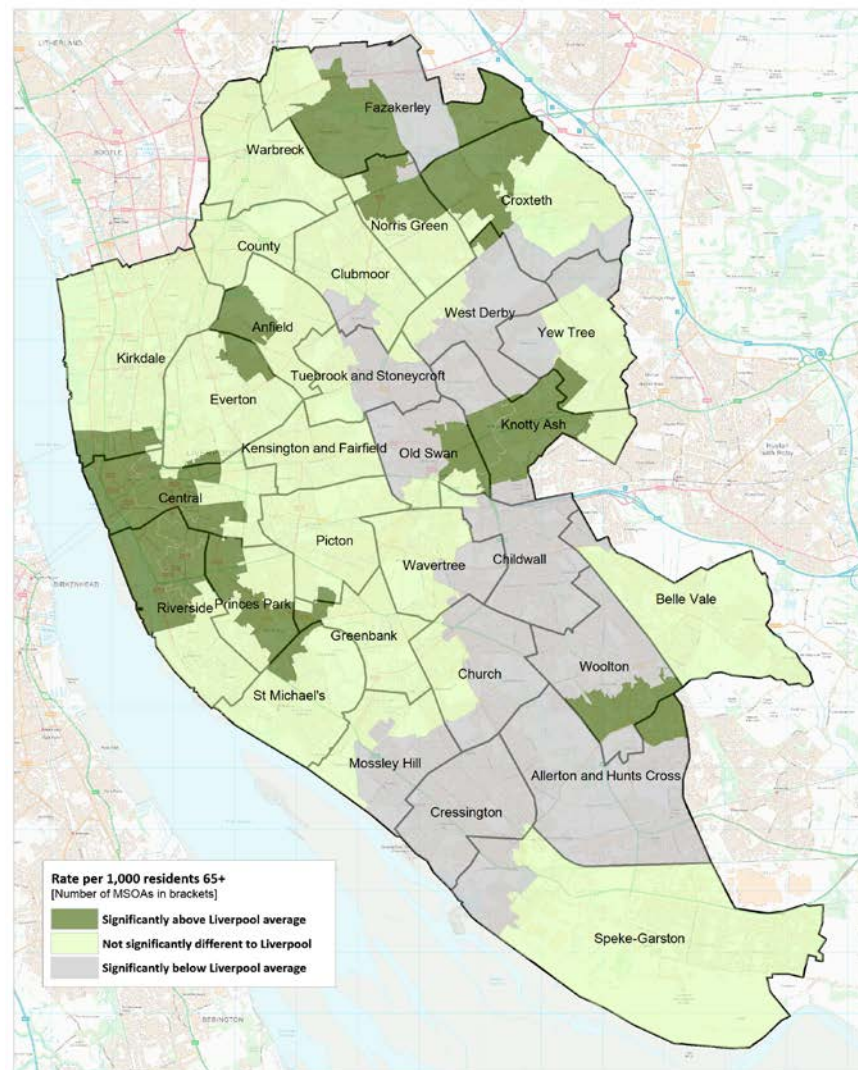
Liverpool City Council | Millennium House | Victoria Street | Liverpool L1 6JD

Public Health Liverpool | E: richard.jones@liverpool.gov.uk

© Crown copyright and database rights 2015 Ordnance Survey 100018351



Liverpool  
City Council



**Ambulance call outs for falls rate per 1,000 residents ages 65+ 2016/17**

Source: TIIG / NWAS Date created: 31/01/2018

Liverpool City Council | 4th Floor Cunard Building | Pier Head | Water Street | Liverpool | L3 1DS

Public Health Liverpool | E: sophie.kelly@liverpool.gov.uk

© Crown copyright and database rights 2014 Ordnance Survey 100018351



Liverpool  
City Council



## Key Points

- The TIIG data is being used to enhance telehealth provision e.g. link with falls and getting out of bed.
- LCC is using the information the information to help with targeting the Healthy Homes Service.
- Falls prevention in care homes to reduce hospital admissions.
- Routine screening of service users for their risk of falls. Community Care Teams are screening to keep people safe at home.

