



Lancashire VRU: the evidence case for an integrated approach

Chief Superintendent Sue Clarke

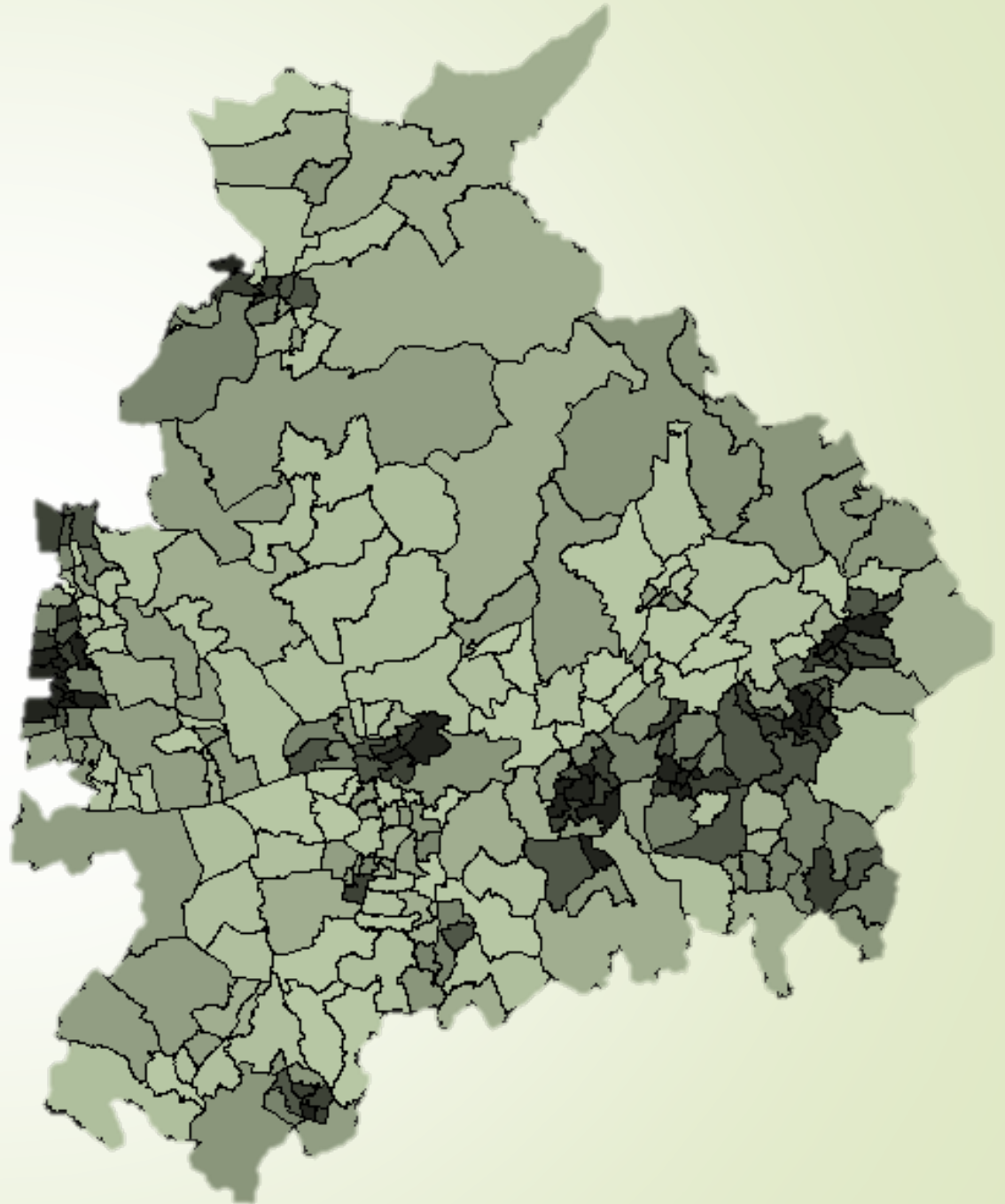
Rebecca Eckersley Partnership Intelligence Analyst

Lancashire

1.5m people, 10% BAME
83% of population live in 22% area
4 Universities, 5 Prisons, 6 A&Es
6 major football clubs,
coastal towns, industrial towns,
areas of outstanding beauty

Deprivation <250

- Blackpool 10
- Blackburn with Darwen 4
- Hyndburn 4
- Burnley 3
- Pendle 3
- Lancaster 2
- Preston 2
- West Lancashire 1
- Wyre 1



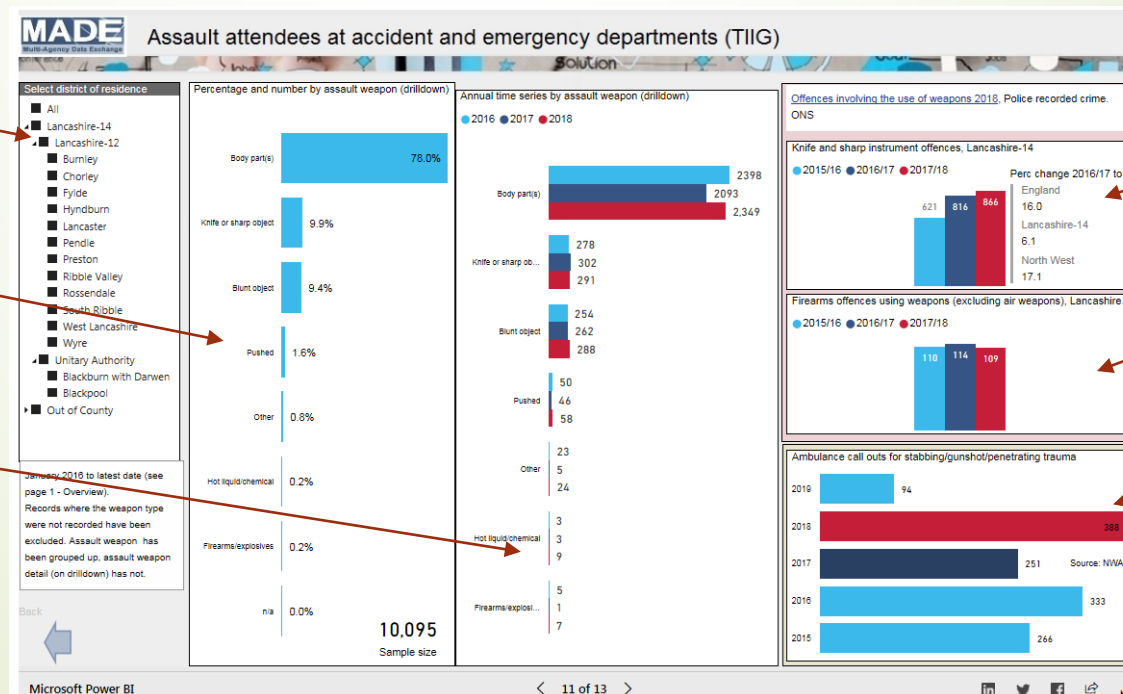
How do we share

- Information Sharing Agreement based on Crime and Disorder Act 1998
- Lancashire has MADE - incorporating health, demographics, crime, deprivation, substance use, fire, offender, victim, children and young people
- Work with Liverpool John Moores University on collection of TIIG data
- VRU supports MADE and is identifying new areas to increase the expanse of data

District level

Assaults by weapon type

3 year series by weapon type



Police knife offences

Police firearms offences

Ambulance call outs stabbing, gunshot, penetrating trauma

Pre-VRU data use

- Data predominantly used for licensing matters
- Countywide strategic assessment
- CSP local delivery profiles and plans
- Direction of operational activity





The Lancashire VRU

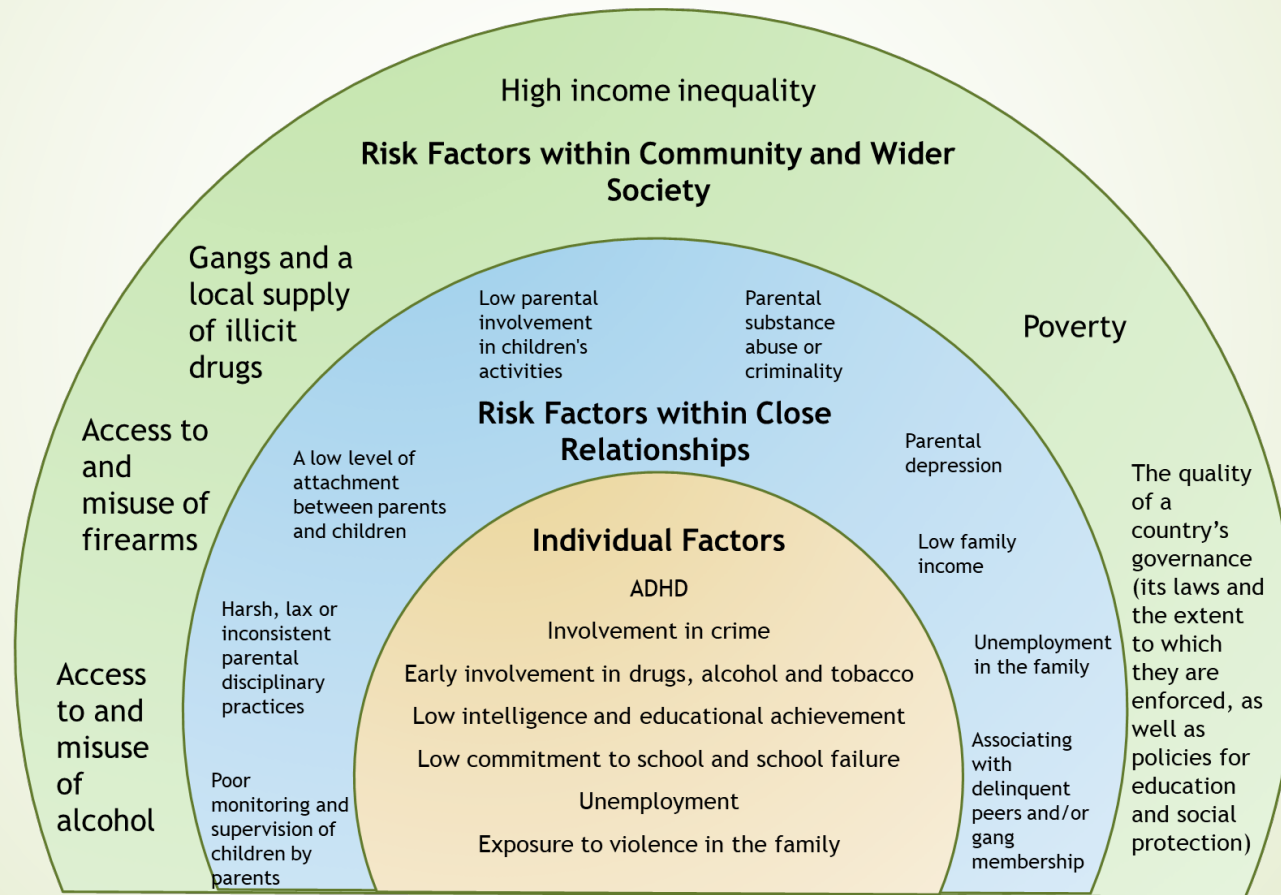
Vision

- ▶ Our vision is for every person living or working in Lancashire to feel and be safe from violence and violent crime

Mission

- ▶ **Prevention** - With prevention and early intervention at its core, we will focus on our community and partnership strengths to ensure that we promote an effective system wide model to reducing, preventing and responding to violence.
- ▶ **Enforcement** - We will work closely with our partners to employ civil and criminal remedies, remaining committed to swift, visible justice for those that who commit violence.
- ▶ **Evidence** - We will enhance what we know from good practice across Lancashire and beyond. We will promote a learning culture, develop evidence of good practice and upscale where possible to take a system wide approach.
- ▶ **Culture** - We will build on our community links and partnerships to reduce and prevent violence. We will focus on individual and adverse community environments to build a trauma informed approach across the county.

Social Determinants of Violence: Causes of causes



Risk Factors for Youth Violence (Lancashire Model collating findings from WHO, Roberts (2019) and Home Office (2019))



Education, employment and training

Poor school attendance and attainment across Lancashire (including fixed term exclusions & persistent absenteeism)

High levels of poor emotional and mental health need in school age children

High levels of young people NEET

Alcohol and Substance Misuse

High levels of hospital admissions for substance misuse (15-24 years)

High levels of hospital admissions for alcohol-specific conditions (under 18s)

Prevalence of Social Determinants of Violence in Lancashire: Key Findings

Parenting, families and communities

Variance across Lancashire for child development at age 2-2 and a half years old. Gaps in data for this indicator for Lancashire County Council

Lower than England average levels of good development at age 5 across the county

Child poverty and unemployment

Higher than England average levels of children in low income families in some areas of Lancashire

Higher than England average levels of adult unemployment across many areas of Lancashire



Homicide

Homicides are showing an increasing trend in Lancashire

Knife crime features less commonly in homicides, with a significantly higher prevalence of 'punching to body or head'

Rape

There is an upward trend for rape in Lancashire

Problem Profile in Lancashire: Key Findings

Knife Crime

Knife crimes only account for 1% of all serious violence in Lancashire

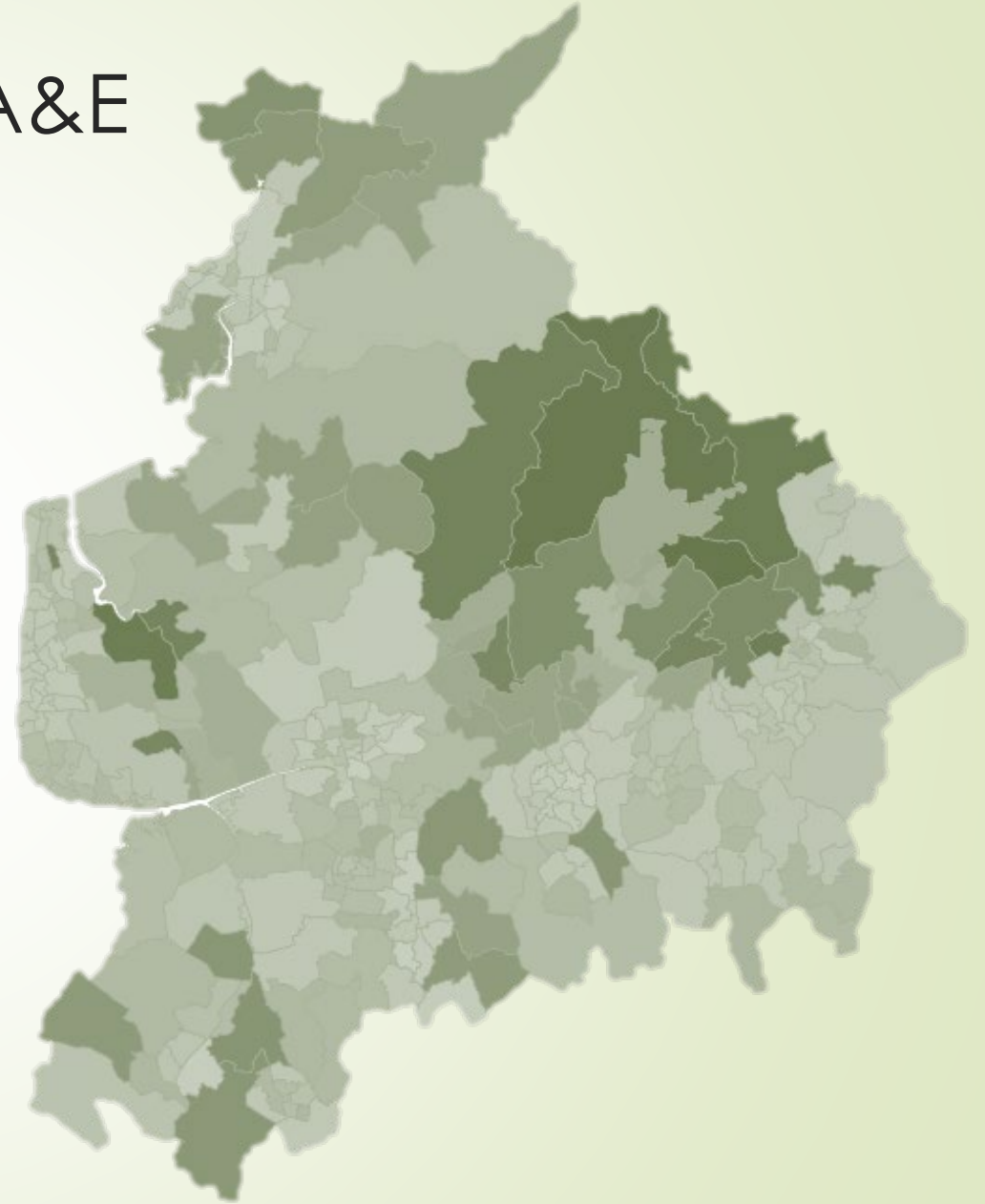
Place

Areas of particularly high rates of serious violence include:

Blackpool, Preston, Burnley and Blackburn with Darwen

Assault attendees at A&E (TIIG)

- Use of TIIG data to supplement crime data to provide a richer understanding
- Exploration of potential violent crimes not reported to police
- Partnership data used to encourage system wide buy-in





Lack of after school activities for young people

The main concerns of young people within their community is drug use and exposure to drugs

38% of young people in Lancashire don't feel safe out at night

**Insight Perceptions:
Key Findings**

Whilst 44% of young people surveyed were worried about knives, only 2% disclosed having carried a knife

Young people think communities are part of the solutions to knife crime

Adults want more enforcement & harsher sentences

Lancashire Violence Reduction Unit Strategy

