



**LANCASHIRE**  
VIOLENCE REDUCTION  
NETWORK

# **Lancashire: Trauma-Informed Data**

**Supt. Justin Srivastava & Teigan Whiffing**

# National Police Chiefs Council: 4 nations

Policing, Health and Social Care  
consensus: working together to protect  
and prevent harm to vulnerable people

February 2018

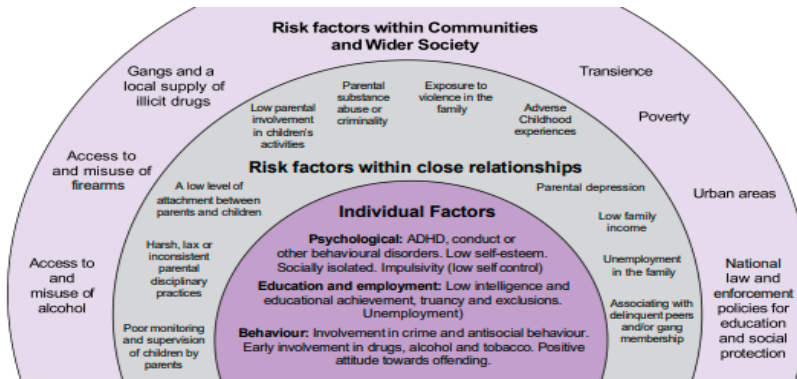


**LANCASHIRE**  
VIOLENCE REDUCTION  
NETWORK

# Data is the Enabler



- Moving between Tertiary, Primary and Secondary prevention
- Multi-agency data: the richer picture
- Learning from the VRU needs assessments
- Culture - Presumption to share and not to hold
- Future role of predictive analytics



“

*To be trauma-informed, we need to use data more effectively, and to use data more effectively, we need to be trauma-informed.*

”



**LANCASHIRE**  
VIOLENCE REDUCTION  
NETWORK

# Pan-Lancashire Data Group

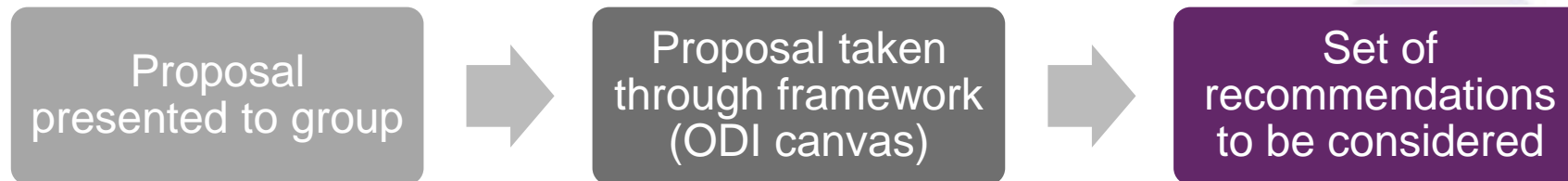
- Serious Violence Duty:
  - Call for partners and organisations to work closer and better in terms of data sharing for preventative purposes
  - Recognition that true primary prevention opportunities are limited when relying on one data set (holistic approaches)
- Coming together of data leads and data users:
  - Recognise current data sharing gateways to utilise, and in turn identifying gaps (present recommendations to strategic leads)
  - To identify data sharing opportunities to develop early intervention/ prevention approaches
  - Collaborate to deliver CYP outcomes framework
  - Feed into data ethics working group to ensure new initiatives have been entirely considered in terms of ethics



# Data Ethics Working Group

- Forum for discussing new data initiatives, programmes and approaches through an ethical framework (learning from Thames Valley)
- Professionals from across policing, health, education, local authority, and third sector:
  - Data ethics experts, academics, analysts, governance leads, heads of data, data security/protection officers, lived experience, programme leads etc

Timeline for a proposal:



Going forward this ensures data initiatives across Lancashire have had a thorough ethical review and primary prevention is better utilised where possible



## Data sources

How are you using your project's data sources, whether you're collecting data yourself or accessing via third parties?

Is any personal data involved, or data that is otherwise sensitive?

## Limitations in data sources

Are there limitations that could influence your project's outcomes?

Consider:

- bias in data collection, inclusion/exclusion, access, etc.
- gaps or imbalances in data
- provenance and data quality
- other factors affecting decisions, such as time constraints

## Sharing data with others

Are you going to be sharing data with other organisations? If so, what?

Are you planning to publish any of the data? Under what conditions?

## Ethical and legislative context

What existing ethical codes apply to your sector or project? What legislation, policies, or other regulatory advice have you used? What requirements do they impose?

Consider the role of law: human rights, data protection, IP and business rights, anti-discrimination laws, and data sharing, access, regulation and ethics codes. Wherever specific, it works (governments, employers, teaching)

## Rights around data sources

Where do you get the data from? Is it generated by an organisation or collected directly from individuals?

How do the data collected for this project or for another purpose? Do you have permission to use the data, or another basis on which you're allowed? What ongoing rights will the data receive later?

## Your reason for using data

What is your primary purpose for collecting and using data in this project?

What are your main (and minor) and business cases?

Are you able to bring back to the world? How and for whom?

Are you making another product or service as a result of this project?

## Communicating your purpose

Do people understand your purpose – especially people who the data is about or who are impacted by it?

How have you been communicating your purpose and this communication been used?

How are you sharing more sensitive information in greater detail?

## Positive effects on people

Which individuals, groups, demographics or organisations will be positively affected by the project? How?

How are you measuring and communicating positive impact? How would you measure it?

## Negative effects on people

Who could be negatively affected by this project? Could the way that data is collected, used or stored cause harm or expose individuals to risk of being re-identified? Could it be used to target, discriminate, or prejudice people, or simply render them less (or exclude) meaningful?

How are limitations and risks communicated to people? Consider people who the data is about, people impacted by it, and organisations using the data.

## Minimising negative impact

What steps can you take to minimise harm?

What measures could reduce limitations in your data sources? How are you keeping personal and other sensitive information secure?

How are you measuring, reporting and acting on potential negative impacts of your project?

What benefits will these actions bring to your project?

## Engaging with people

How can people engage with you about the project?

How can people affected (or at least informed), assist or demand changes to the project or service? To what extent?

Are people motivated, interested and well understood?

## Openness and transparency

How open can you be about the project? Could you publish your methodology, datasets, code or report measurements?

Can you set plans for feedback on the project? How will you communicate it internally?

Will you publish your actions and answers to this canvas openly?

## Ongoing implementation

Are you actively building in thoughts, ideas and considerations of people affected to your project? How?

What information or training might be needed to help people understand and use it?

Are systems, processes and resources available for responding to data issues that arise in the long-term?

## Reviews and iterations

How will ongoing data ethics issues be measured, monitored, discussed and addressed?

How often will you reassess the decisions reviewed or questioned? How?

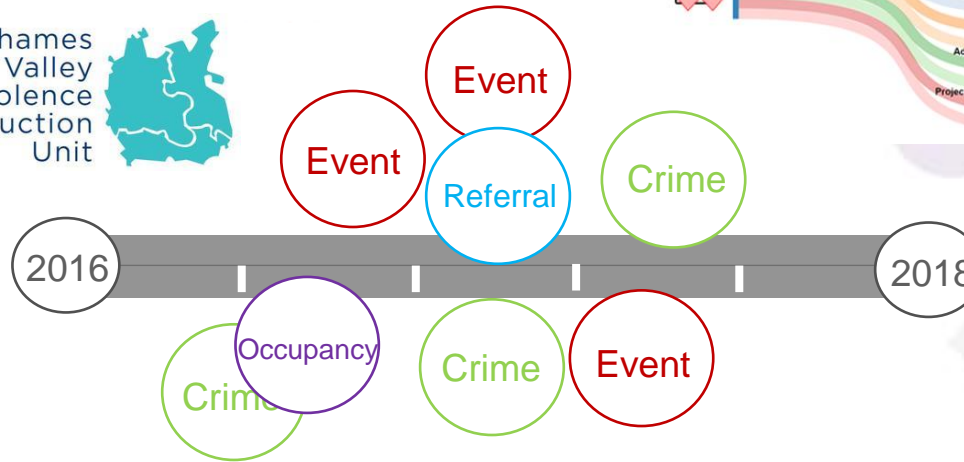
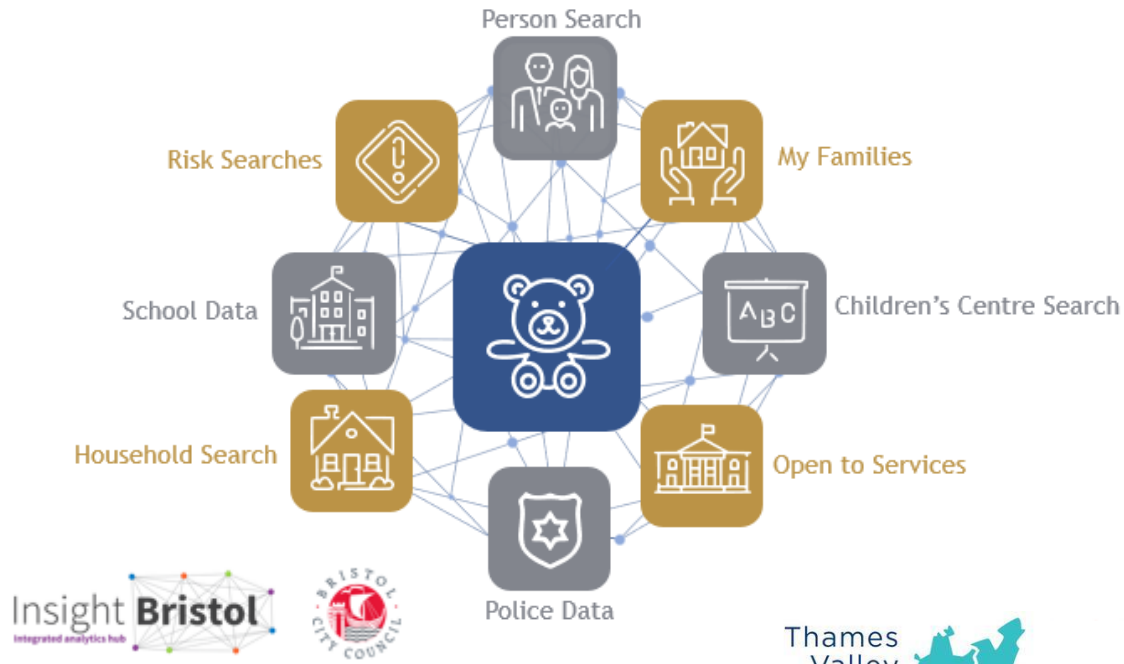
## Your actions

What actions will you take before moving forward with the project? Which should be priority?

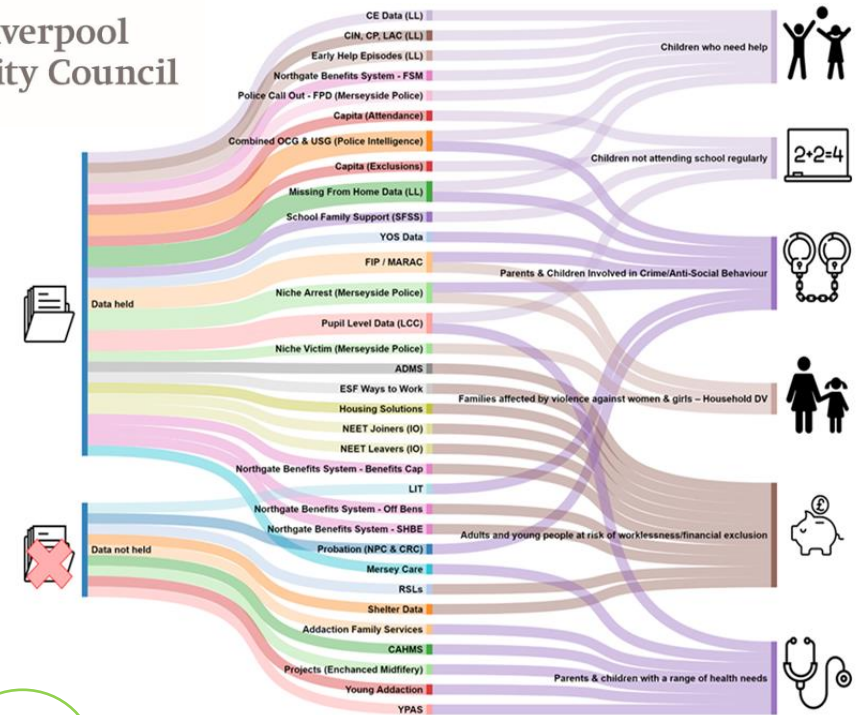
Who will be responsible for these actions, and who must be involved?

Will you openly publish your actions and answers to the canvas?

# Next Steps

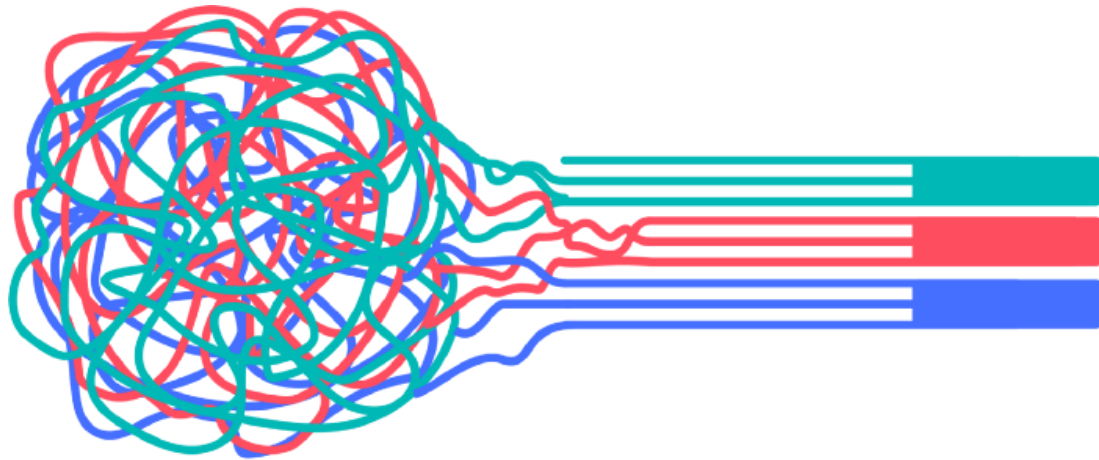


Liverpool City Council

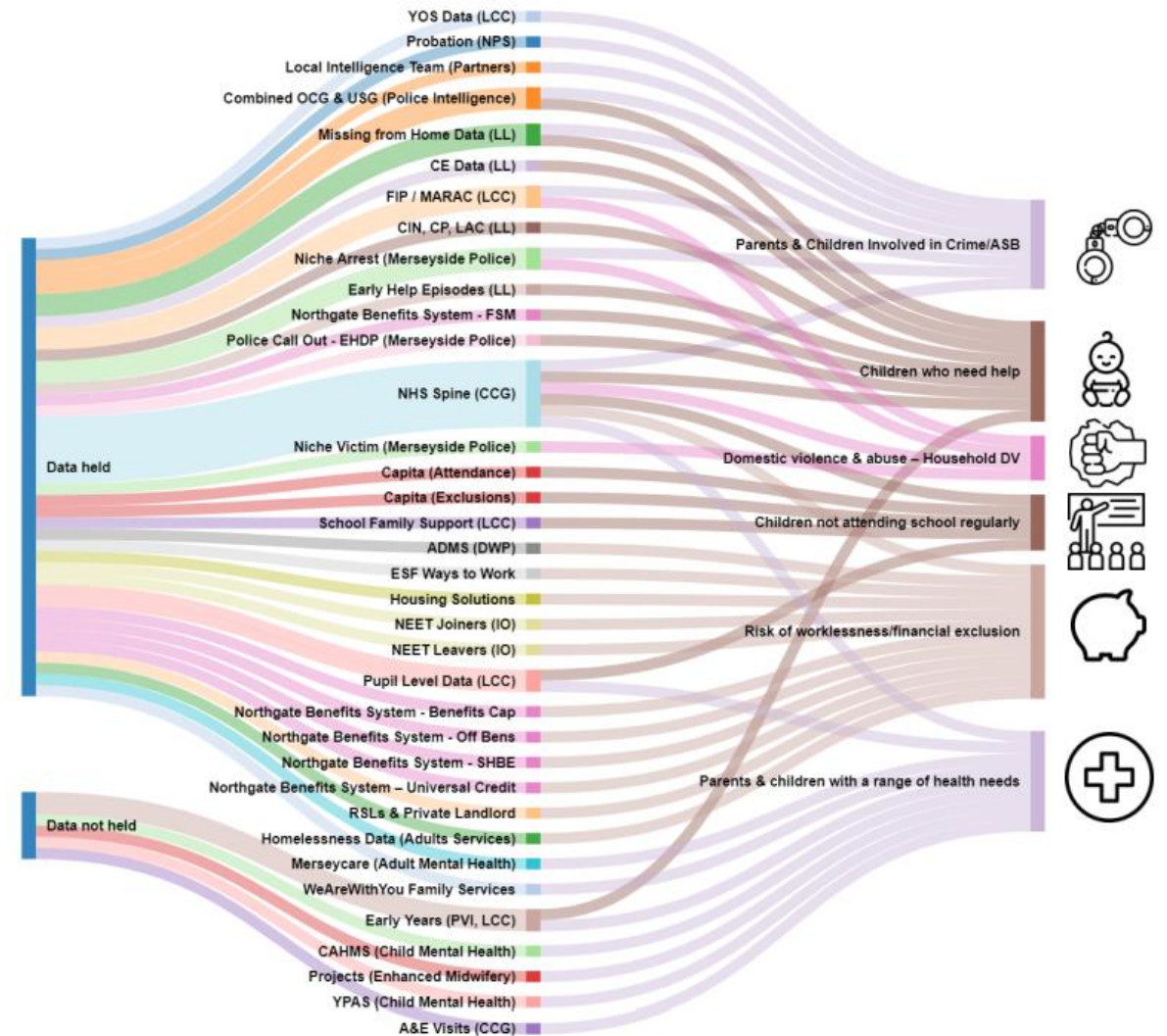




# Digital Programme



- Proof of concept stage in Lancashire
  - Linking and automating data sets into a central hub (Sentinel)
  - Tiered access based on involvement with child/ young person/ family



**Thankyou for listening**

[justin.Srivastava@lancashire.police.uk](mailto:justin.Srivastava@lancashire.police.uk)

[teigan.whiffing@lancashire.police.uk](mailto:teigan.whiffing@lancashire.police.uk)



**LANCASHIRE**  
VIOLENCE REDUCTION  
NETWORK