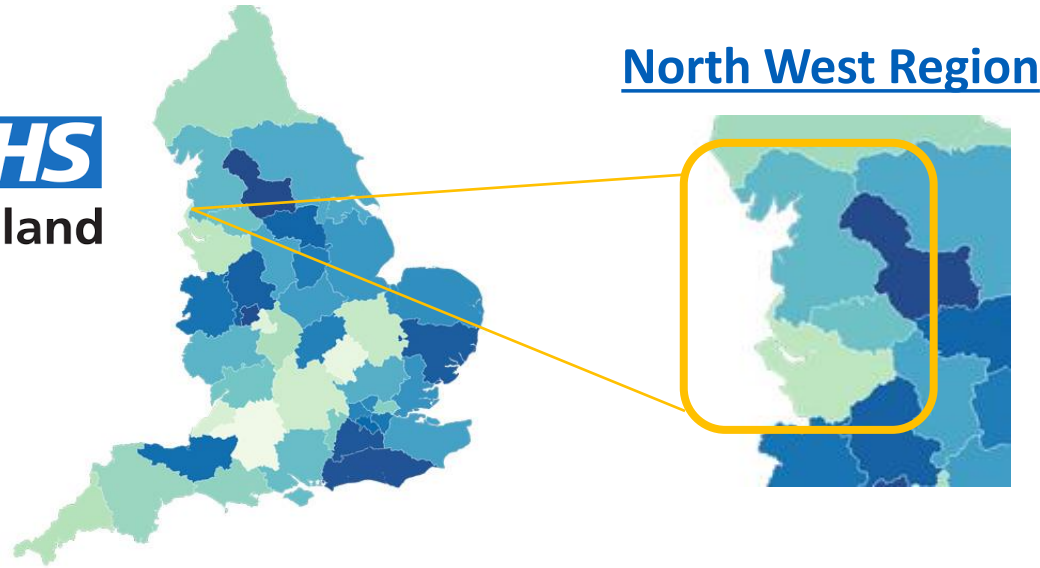


TIIG and ECDS:

Working towards a shared ambition

12th July 2022





Urgent and Emergency Care Transformation Team



Working with



Data Liaison Service

A specialist team with the skills, knowledge and experience of supporting

NHS and care organisations in adopting and utilising nationally mandated datasets collections to help minimize the burden on providers of collecting the data.

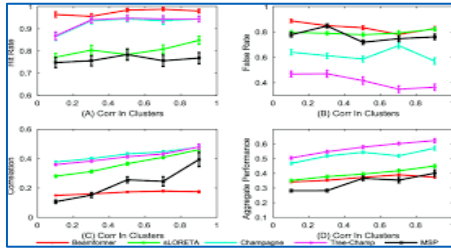
Commissioned by NHS England Hospitals Programme

Partnership Assets:

- Technology Specialists
- Data Development Teams (SUS)
- Clinical & Operational Specialists
- Partnerships with SMEs
- Business Intelligence / Informatic Teams



Counting and Measuring in UEC Services



- Currently: performance aggregate
- Limitations ...

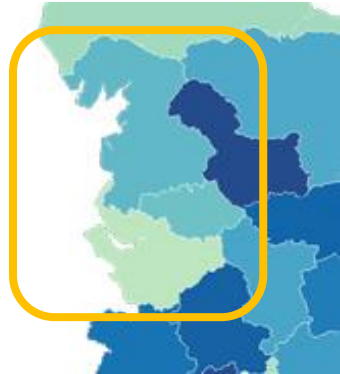
- Moving towards: **Emergency Care Data Set – ECDS**

- Many more patient level data fields [108 data items]
 - Extracted directly from administration systems
 - Administrative, operational and clinical data grouping
 - **Injury Information**
 - (date / time of injury, place and type, activity and mechanism)



- The new, more detailed data set will:
 - Improve patient care through better and more consistent information
 - Allow better planning of healthcare services, and
 - Improve communication between healthcare professionals
- The better data we can capture, the more we can understand and commission services that improve care for patients and reduce pressure for staff

Implementing ECDS ... and TIIG



NHS
England

NW UEC team

NHS
Digital

NW Data Liaison
team

&

• 27 hospital sites with an ED

Across

- 3 Integrated Care Systems**
- Cheshire & Merseyside
 - Greater Manchester
 - Lancashire & South Cumbria



- Regular engagement meetings with all 27 ED sites
 - Supporting technical implementation, reviewing data quality
 - High data quality sites for 'Injury Intent' referenced

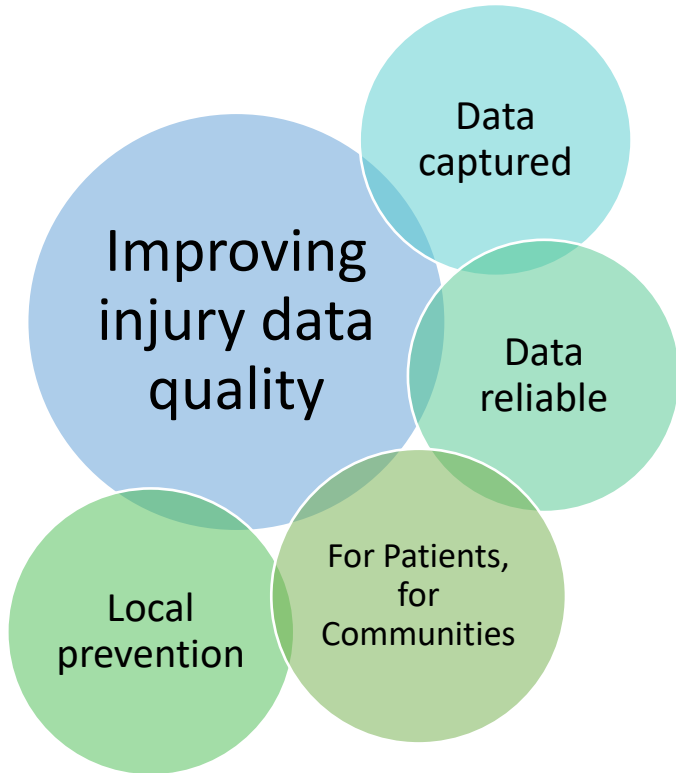
TIIG - who???

TIIG

Trauma & Injury Intelligence Group Surveillance System

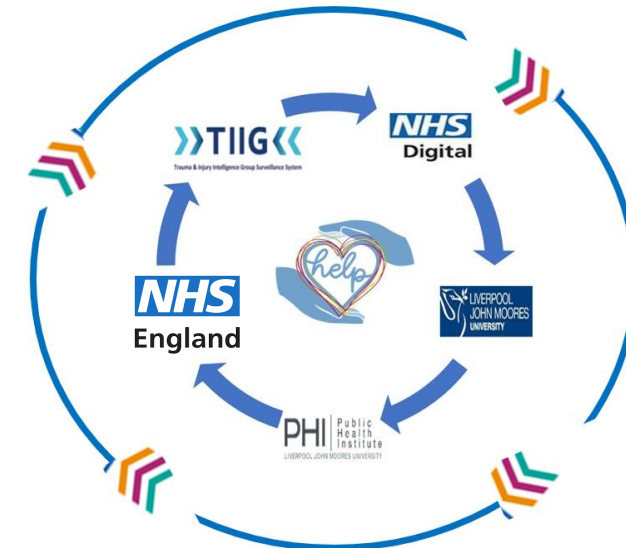


Working Towards a Shared Ambition



- **3 Workshops, 45 minutes each**
 - 180 attendees: clinical; administrative; BI; operational management
 - Positive feedback

Agenda	Speakers
Welcome/ House Keeping	Nicola Bell ECDS / CRS Programme Lead Performance Directorate NHS England and NHS Improvement – North West
Background: ECDS Metrics	Julie Whittaker Data Liaison Manager NHS Digital Data Services Data Liaison Service
Trauma and Injury Intelligence Group Surveillance System (TIIG)	Dr Jennifer Germain TIIG Project Lead - Public Health Institute World Health Organization Collaborating Centre for Violence Prevention Liverpool John Moores University
Clinically Focused Discussion	NHS E/I NW Regional Clinical Advisors Dr. Sally Richardson Consultant in EM Warrington & Halton NHS Trust Dr. Georgina Robertson Consultant in EM East Lancashire Hospitals NHS Trust
Questions	All
Summary, Thanks and Close	Nicola Bell



ECDS Data Quality Dashboard - National Focus

Indicators are based on ECDS submitted to SUS for activity from Thursday, 1 July 2021 up to and including Wednesday, 6 July 2022 extracted from SUS on Wednesday, 6 July 2022, at 5:30pm.

ENGLAND (E)
 National (All Providers)

Activity Month
 Jul-2022

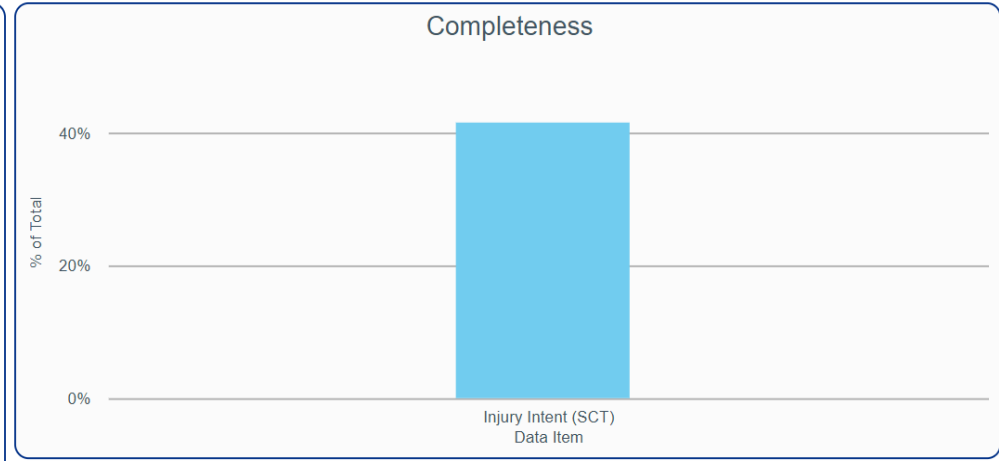
Dept. Type
 All

Data Item
 Injury Intent (SCT)

Grouping
 All

In DQMI
 All

Data Item	National Total	National Missing	National Invalid	National % Valid
<input type="checkbox"/> Injury Intent (SCT) Overall	80,530	47,108	237	41.2%
	80,530	47,108	237	41.2%



ECDS Data Quality Dashboard - STP Comparison

Indicators are based on ECDS submitted to SUS for activity from Thursday, 1 July 2021 up to and including Wednesday, 6 July 2022:

Select: Sustainability & Transformation Partnership(s) (STP) Activity Month Dept.

All Jul-2022 01

STP Code	STP Name	Dept. Type Activity	STP % Complete	National % Complete
QOX	BATH AND NORTH EAST SOMERSET, SWINDON AND ...	01	4.2%	43.0%
QHG	BEDFORDSHIRE, LUTON AND MILTON KEYNES STP (...)	01	42.6%	43.0%
QHL	BIRMINGHAM AND SOLIHULL STP (QHL)	01	3.0%	43.0%
QUY	BRISTOL, NORTH SOMERSET AND SOUTH GLOUCES...	01	81.6%	43.6%
QU9	BUCKINGHAMSHIRE, OXFORDSHIRE AND BERKSHIR...	01	87.2%	43.0%
QUE	CAMBRIDGESHIRE AND PETERBOROUGH STP (QUE)	01	56.8%	43.0%
QYG	CHESHIRE AND MERSEYSIDE STP (QYG)	01	46.0%	43.0%
QT6	CORNWALL AND THE ISLES OF SCILLY HEALTH & SO...	01	100.0%	43.0%
QWU	COVENTRY AND WARWICKSHIRE STP (QWU)	01	15.7%	43.0%
QHM	CUMBRIA AND NORTH EAST STP (QHM)	01	41.3%	43.0%
QJK	DEVON STP (QJK)	01	33.1%	43.0%
QVV	DORSET STP (QVV)	01	7.2%	43.0%
QMF	EAST LONDON HEALTH & CARE PARTNERSHIP (STP) ...	01	87.7%	43.0%
QR1	GLOUCESTERSHIRE STP (QR1)	01	27.2%	43.0%
QOP	GREATER MANCHESTER HEALTH & SOCIAL CARE PA...	01	14.4%	43.0%
QRL	HAMPSHIRE AND THE ISLE OF WIGHT STP (QRL)	01	31.9%	43.0%
QGH	HEREFORDSHIRE AND WORCESTERSHIRE STP (QGH)	01	34.4%	43.0%
QM7	HERTFORDSHIRE AND WEST ESSEX STP (QM7)	01	31.3%	43.0%
QOQ	HUMBER, COAST AND VALE STP (QOQ)	01	44.3%	43.0%
QJ2	JOINED UP CARE DERBYSHIRE STP (QJ2)	01	41.0%	43.0%
QKS	KENT AND MEDWAY STP (QKS)	01	7.1%	43.0%
QE1	LANCASHIRE AND SOUTH CUMBRIA ICS (QE1)	01	21.7%	43.0%
QK1	LEICESTER, LEICESTERSHIRE AND RUTLAND STP (Q...	01	63.2%	43.0%
QH8	MID AND SOUTH ESSEX STP (QH8)	01	69.2%	43.0%
QMM	NORFOLK AND WAVENEY HEALTH & CARE PARTNER...	01	64.1%	43.0%
QMJ	NORTH LONDON PARTNERS IN HEALTH & CARE (STP...	01	30.1%	43.0%
QRV	NORTH WEST LONDON HEALTH & CARE PARTNERSH...	01	22.5%	43.0%
QPM	NORTHAMPTONSHIRE STP (QPM)	01	70.9%	43.0%
QT1	NOTTINGHAM AND NOTTINGHAMSHIRE HEALTH AND...	01	64.9%	43.0%
QKK	OUR HEALTHIER SOUTH EAST LONDON STP (QKK)	01	18.0%	43.0%
QOC	SHROPSHIRE AND TELFORD AND WREKIN STP (QOC)	01	98.2%	43.0%
QSL	SOMERSET STP (QSL)	01	45.0%	43.0%
QWE	SOUTH WEST LONDON HEALTH & CARE PARTNERSH...	01	79.0%	43.0%
QF7	SOUTH YORKSHIRE AND BASSETLAW STP (QF7)	01	48.1%	43.0%
QNC	STAFFORDSHIRE & STOKE ON TRENT STP (QNC)	01	0.0%	43.0%
QJG	SUFFOLK AND NORTH EAST ESSEX ICS (QJG)	01	7.6%	43.0%
QXU	SURREY HEARTLANDS HEALTH & CARE PARTNERSH...	01	76.9%	43.0%
QNX	SUSSEX HEALTH AND CARE PARTNERSHIP (QNX)	01	67.0%	43.0%
QUA	THE BLACK COUNTRY AND WEST BIRMINGHAM STP ...	01	33.8%	43.0%
QWO	WEST YORKSHIRE AND HARROGATE HEALTH & CAR...	01	63.4%	43.0%

ECDSv3 Injury Intent by STP



- Data Completeness vary across STPs
- Data Quality & Improvements vary across STPs

Challenges:

- System upgrades and Supplier Improvements
- Clinical understanding
- Time pressures
- Resource pressures
- Non mandated data item/s

March 2022

July 2022

ECDS Data Quality Dashboard - Region Comparison

Indicators are based on ECDS submitted to SUS for activity from Thursday, 1 July 2021 up to and including Wednesday, 6 July 2022 e

Select: Region(s) **ENGLAND (E)** Activity Month **Mar-2022** Dept. Type **01**
 All National (All Providers)

Region Code	Region Name	Dept. Type Activity	Region % Complete	National % Complete	Region % Valid	National % Valid
Y63	NORTH EAST & YORKS (Y63)	01	48.0%	40.0%	47.8%	39.6%
Y62	NORTH WEST (Y62)	01	24.9%	40.0%	24.4%	39.6%
Y61	EAST OF ENGLAND (Y61)	01	44.6%	40.0%	44.3%	39.6%
Y60	MIDLANDS (Y60)	01	31.5%	40.0%	31.2%	39.6%
Y59	SOUTH EAST (Y59)	01	45.3%	40.0%	45.1%	39.6%
Y58	SOUTH WEST (Y58)	01	26.2%	40.0%	25.9%	39.6%
Y56	LONDON (Y56)	01	56.2%	40.0%	55.3%	39.6%

ECDS Data Quality Dashboard - Region Comparison

Indicators are based on ECDS submitted to SUS for activity from Thursday, 1 July 2021 up to and including Wednesday, 6 July 2022 e

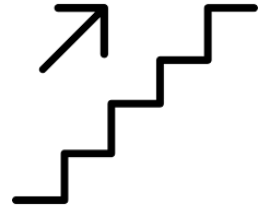
Select: Region(s) **ENGLAND (E)** Activity Month **Jul-2022** Dept. Type **01**
 All National (All Providers)

Region Code	Region Name	Dept. Type Activity	Region % Complete	National % Complete	Region % Valid	National % Valid
Y63	NORTH EAST & YORKS (Y63)	01	51.4%	43.0%	51.2%	42.6%
Y62	NORTH WEST (Y62)	01	28.3%	43.0%	27.9%	42.6%
Y61	EAST OF ENGLAND (Y61)	01	49.1%	43.0%	48.6%	42.6%
Y60	MIDLANDS (Y60)	01	39.4%	43.0%	39.0%	42.6%
Y59	SOUTH EAST (Y59)	01	49.0%	43.0%	48.8%	42.6%
Y58	SOUTH WEST (Y58)	01	32.5%	43.0%	32.4%	42.6%
Y56	LONDON (Y56)	01	49.7%	43.0%	49.0%	42.6%

Performance comparison for all regions - March 2022 to July 2022

Next Steps:

- Maintain links
- Reciprocal information sheets for each organisation to use in injury data meetings
- Workshop recordings to be available on national platform
- Support TIIG with data queries – SUS, ECDS, Injury Intent and related programmes



Contact Information

[NHS England, NW UEC Transformation Team | \[England.nwuec@nhs.net\]\(mailto:England.nwuec@nhs.net\)](#)

Nicola Bell, ECSD/CRS Programme Lead, Greater Manchester, and Lancashire & South Cumbria

Nicola.bell9@nhs.net | m: 07824 124485

Gareth Jones, ECDS/CRS Programme Lead, Cheshire & Merseyside

Gareth.jones2@nhs.net

Yasmin Giama, ECDS/CRS Senior Project Manager

yasmin.giama@nhs.net

[NHS Digital, Data Liaison Service](#)

Julie Whittaker, Data Liaison Service Manager

Julie.whittaker5@nhs.net

Leah Ormerod, Data Liaison Officer

Leah.ormerod1@nhs.net