

TIIG

INJURY SURVEILLANCE IN THE NORTH WEST OF ENGLAND

Countess of Chester Hospital Emergency Department Monthly Bulletin: April 2011 – March 2012

This bulletin provides a breakdown of all injury attendances at Countess of Chester Hospital Emergency Department (ED) between April 2011 and March 2012.

Between April 2011 and March 2012 there were 17,644 injury attendances. Injury attendances peaked in April (n= 1,967), with January (n=1,116) having the least number of injury attendances (**Figure 1**).

For all months there were more male injury attendances than female presenting at Countess of Chester Hospital ED (57%).

Figure 2 presents the age group of injury attendances. Across the whole year the majority of injury attendances were made by individuals aged 30 to 59 years (32%); 18 to 29 year olds accounted for 26% of total attendances.

Table 1 details the patient group for injury attendances to Countess of Chester ED. Almost seven in ten injury attendances were classified as other injury (69%); 11% were recorded as road traffic collisions (RTCs) and 10% sports injury.

Table 2 illustrates the source of referral for patients presenting with injuries. The majority (30%) of injury attendees self-referred; other referrals represented 29% of total referral sources and 21% were consultant referrals.

Table 3 presents injury attendances by location of incident. Almost four in ten were recorded as occurring in the home (38%); 33% of incidents occurred in other locations and 14% in public places.

Table 4 shows the discharge destination of injury attendances. Over half (53%) of attendees required no further treatment; 14% were discharged to treatment by GP and just over one in ten (11%) were referred to a fracture clinic.

Assaults

There were 1,053 assault attendances at Countess of Chester Hospital ED between April 2011 and March 2012. Assault attendees presenting at Countess of Chester Hospital ED were mainly male (72%) and the majority (54%) were aged between 18 and 29 years.

Table 5 shows the primary location of assault was recorded as occurring in other locations (35%); public place (27%) and at home (19%).

Figure 1: Gender of injury attendances by month, April 2011 to March 2012

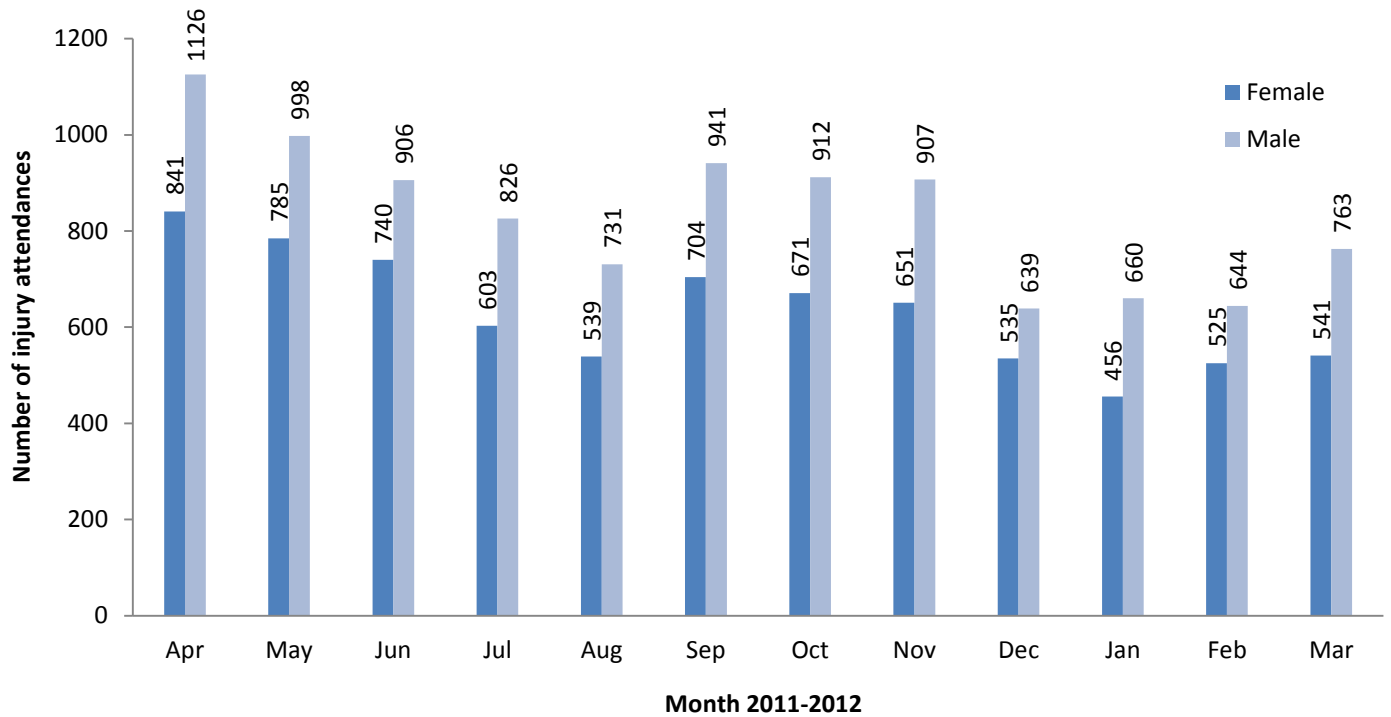


Figure 2: Age group of injury attendances by month, April 2011 to March 2012

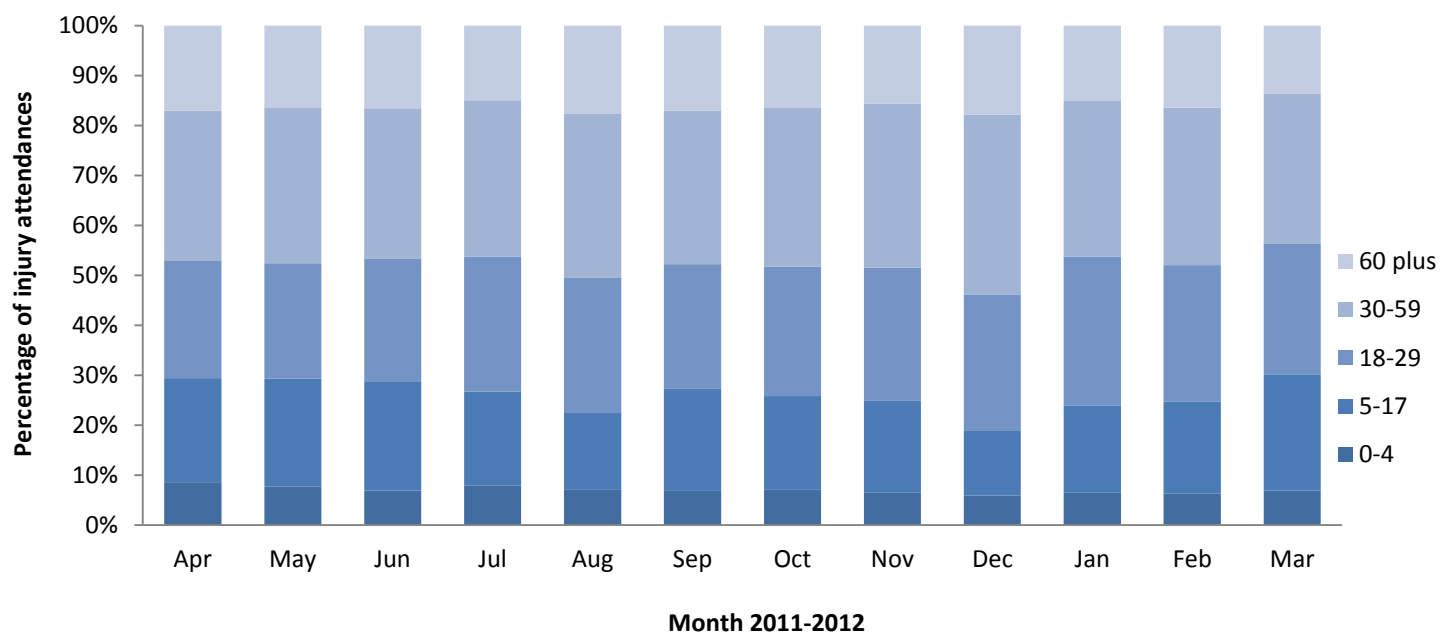


Table 1: Injury attendances by injury group, April 2011 to March 2012

Injury group	Apr	May	Jun	July	Aug	Sept	Oct	Nov	Dec	Jan	Feb	Mar	Total	%
Other injury	1480	1278	1174	1040	859	1156	1045	1063	766	686	782	839	12168	69%
Road traffic collisions	135	188	207	171	170	169	175	184	169	141	126	114	1949	11%
Sports injury	180	159	107	92	105	170	194	160	71	159	134	198	1729	10%
Assault	94	88	85	86	83	90	94	82	125	69	69	88	1053	6%
Deliberate self-harm	78	70	73	40	53	60	75	69	43	61	58	65	745	4%
Total	1967	1783	1646	1429	1270	1645	1583	1558	1174	1116	1169	1304	17644	100%

Table 2: Injury attendances by source of referral, April 2011 to March 2012

Source of referral	Apr	May	Jun	July	Aug	Sept	Oct	Nov	Dec	Jan	Feb	Mar	Total	%
Self	535	545	473	382	440	454	455	476	358	375	351	404	5248	30%
Other source	572	538	537	436	316	541	442	450	254	283	320	380	5069	29%
Consultant	417	375	314	301	270	339	371	329	226	209	252	275	3678	21%
GP	368	302	282	280	230	257	282	275	313	225	204	202	3220	18%
A&E	75	23	40	30	14	54	33	28	23	24	42	43	429	2%
Total	1967	1783	1646	1429	1270	1645	1583	1558	1174	1116	1169	1304	17644	100%

Table 3: Injury attendances by incident location, April 2011 to March 2012¹

Incident location	Apr	May	Jun	July	Aug	Sept	Oct	Nov	Dec	Jan	Feb	Mar	Total	%
Home	838	694	627	557	500	641	616	616	418	418	421	443	6789	38%
Other location	658	573	565	452	437	571	524	450	351	371	404	454	5810	33%
Public place	253	263	201	218	221	195	214	202	212	171	138	175	2463	14%
Work	128	140	143	144	91	129	131	156	88	99	115	102	1466	8%
Educational establishment	50	85	91	43	***	<90	66	118	52	43	74	112	822	5%
Licenced premises	<40	<30	<20	<15	<20	21	<30	16	<50	<15	11	<20	265	2%
Countess of Chester Hospital	***	***	***	***	***	***	***	0	***	***	6	***	29	0%
Total	1967	1783	1646	1429	1270	1645	1583	1558	1174	1116	1169	1304	17644	100%

Table 4: Injury attendances by discharge destination, April 2011 to March 2012¹

Discharge	Apr	May	Jun	July	Aug	Sept	Oct	Nov	Dec	Jan	Feb	Mar	Total	%
No further treatment	1050	994	940	761	715	858	779	802	605	644	559	699	9406	53%
Treatment by GP	239	231	202	186	147	241	265	264	184	148	206	189	2502	14%
Referred to Fracture Clinic	223	200	172	181	120	196	177	164	117	93	133	147	1923	11%
Admitted to a hospital bed	204	158	133	122	135	149	138	140	123	100	108	102	1612	9%
Referred to outpatient clinic	96	70	64	63	45	59	55	74	44	45	36	44	695	4%
Left before treatment	66	49	49	49	47	53	76	46	40	24	37	40	576	3%
Referred to other health care provider	35	43	33	32	31	34	30	31	25	33	42	24	393	2%
Refused treatment	38	31	42	21	18	30	39	24	24	19	32	47	365	2%
Transferred to other health care professional	16	7	11	14	<15	25	<25	<15	12	10	<15	12	164	1%
Died in department	0	0	0	0	***	0	***	***	0	0	***	0	8	0%
Total	1967	1783	1646	1429	1270	1645	1583	1558	1174	1116	1169	1304	17644	100%

Table 5: Location of assault for assault attendances, April 2011 to March 2012¹

Incident Location	Apr	May	Jun	Jul	Aug	Sep	Oct	Nov	Dec	Jan	Feb	Mar	Total	%
Other location	33	34	33	23	29	38	43	19	35	24	20	37	368	35%
Public place	30	23	19	29	24	21	17	26	36	19	18	21	283	27%
Home	12	20	14	19	10	21	16	18	25	12	16	17	200	19%
Licenced premises	12	<10	11	<10	<15	<10	10	6	<25	6	<10	<15	121	11%
Work	<10	***	<10	***	***	***	<10	6	***	<10	***	0	44	4%
Educational establishment	***	***	***	***	0	***	***	7	***	***	***	***	32	3%
Countess of Chester Hospital	0	0	0	0	***	0	0	0	0	***	***	0	5	0%
Total	94	88	85	86	83	90	94	82	125	69	69	88	1053	100%

Published April 2014

Stuart Cole (TIIG researcher)

Centre for Public Health, Faculty of Health and Applied Social Sciences, Liverpool John Moores University

2nd Floor, Henry Cotton Campus, 15-21 Webster Street, Liverpool, L3 2ETContact: Jennifer Brizell. Tel: 0151 231 4500 Email: J.S.Brizell@ljmu.ac.ukWebsite: www.tiig.info (please note all data requests should be made through the TIIG website)

¹ *** Please note that all numbers less than five have been suppressed in line with patient confidentiality and if there is only one number less than five in a category then two numbers will be suppressed at the next level (e.g. <6) in order to prevent back calculations from totals.