



# TIIG

INJURY SURVEILLANCE IN THE NORTH WEST OF ENGLAND

## Countess of Chester Hospital Emergency Department Monthly Bulletin: April 2012 – March 2013

This bulletin provides a breakdown of all injury attendances at Countess of Chester Hospital Emergency Department (ED) between April 2012 and March 2013.

Between April 2012 and March 2013 there were 17,998 injury attendances. Injury attendances peaked in September (n=1,810), with December (n=932) having the least number of injury attendances (**Figure 1**).

For all months there were more male injury attendances than female presenting at Countess of Chester Hospital ED (56%).

**Figure 2** presents the age group of injury attendances. Across the whole year approximately one third of injury attendances were made by individuals aged 30 to 59 years (33%); 18 to 29 year olds accounted for 24% of total attendances.

**Table 1** details the patient group for injury attendances to Countess of Chester ED. Three quarters of injury attendances were classified as other injury (75%); 8% were recorded as road traffic collisions (RTCs) and 7% as sports injury.

**Table 2** illustrates the source of referral for patients presenting with injuries. Over three in ten (33%) injury attendees self-referred; referrals via 'other' route represented 27% of total referral sources and 21% were consultant referrals.

**Table 3** presents injury attendances by location of incident. Over four in ten were recorded as occurring in the home (42%); 13% in public places and 9% occurred at work.

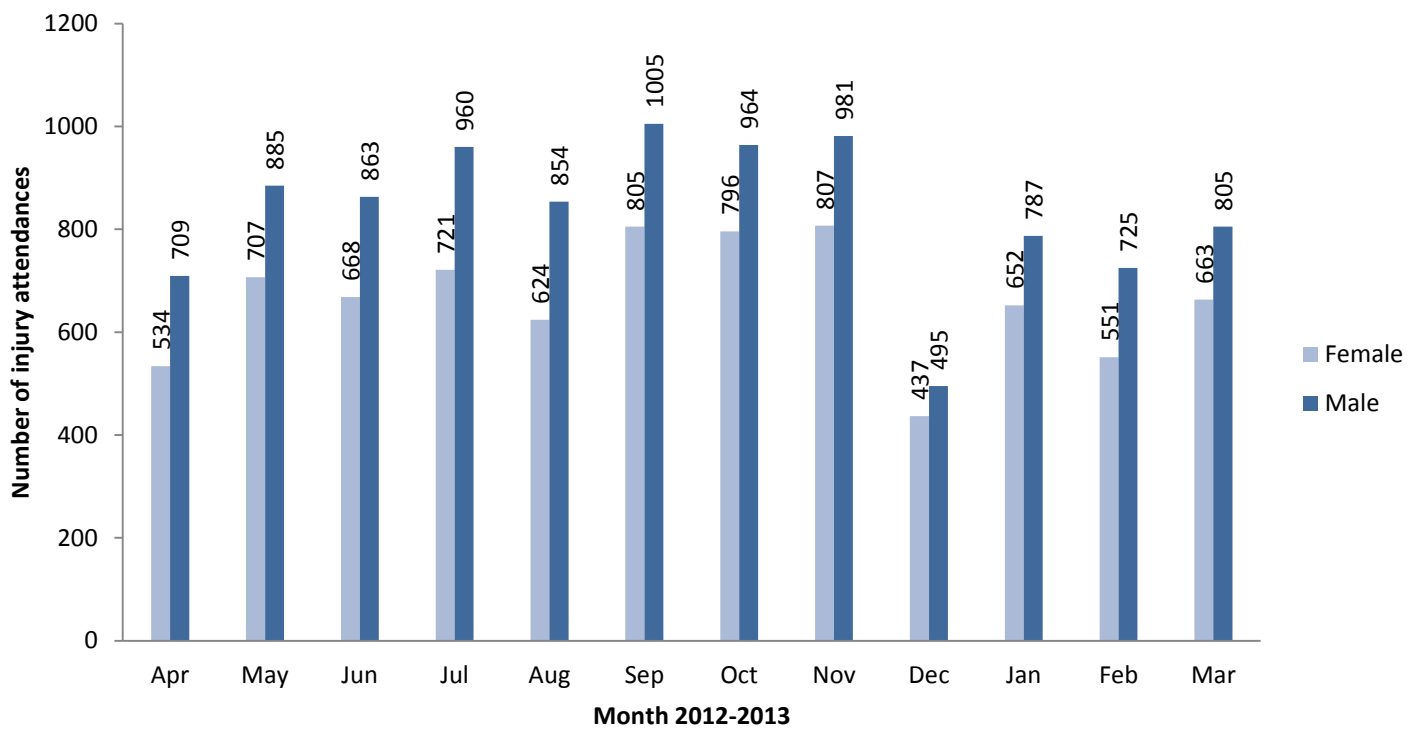
**Table 4** shows the discharge destination of injury attendances. Over half (52%) of attendees were discharged and required no further treatment; 15% were discharged to treatment by General Practitioner (GP) and (11%) were referred to a fracture clinic.

**Table 5** shows the primary location of assault was recorded as occurring in other locations (36%); public place (25%) and at home (18%).

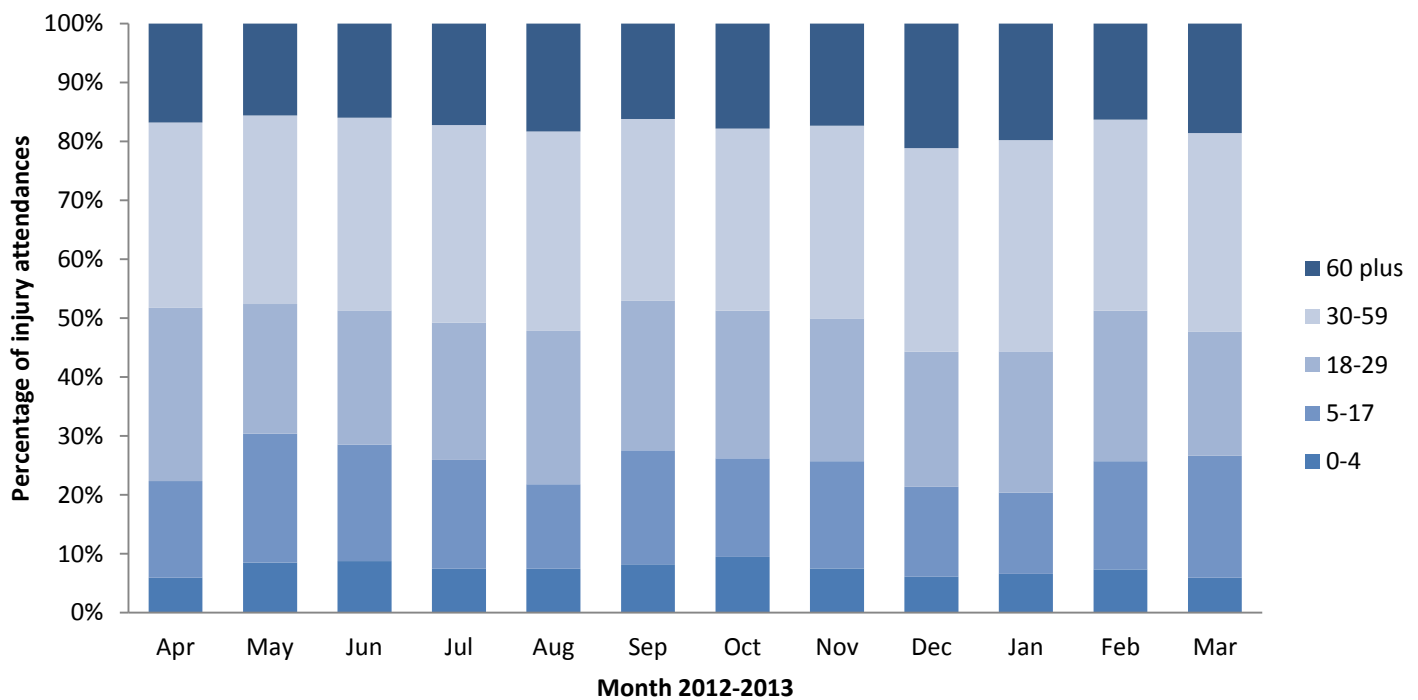
### Assaults

There were 918 assault attendances at Countess of Chester Hospital ED between April 2012 and March 2013. Assault attendees presenting at Countess of Chester Hospital ED were mainly male (72%) and the majority (52%) were aged between 18 and 29 years.

**Figure 1: Gender of injury attendances by month, April 2012 to March 2013**



**Figure 2: Age group of injury attendances by month, April 2012 to March 2013**



**Table 1: Injury attendances by injury group, April 2012 to March 2013<sup>1</sup>**

| Injury group           | Apr         | May         | Jun         | July        | Aug         | Sept        | Oct         | Nov         | Dec        | Jan         | Feb         | Mar         | Total        | %           |
|------------------------|-------------|-------------|-------------|-------------|-------------|-------------|-------------|-------------|------------|-------------|-------------|-------------|--------------|-------------|
| Other injury           | 832         | 1143        | 1134        | 1268        | 1087        | 1367        | 1360        | 1309        | 729        | 1145        | 940         | 1097        | 13411        | 75%         |
| Road traffic collision | 137         | 162         | 126         | 155         | 118         | 133         | 153         | 155         | 51         | 87          | 95          | 137         | 1509         | 8%          |
| Sports injury          | 116         | 141         | 107         | 110         | 96          | 155         | 113         | 185         | 55         | 49          | 106         | 90          | 1323         | 7%          |
| Assault                | 103         | 74          | 78          | 82          | 79          | 71          | 66          | 83          | 58         | 90          | 62          | 72          | 918          | 5%          |
| Deliberate self-harm   | 55          | 72          | 86          | 66          | 98          | 84          | 68          | 56          | 39         | 68          | 73          | 72          | 837          | 5%          |
| <b>Total</b>           | <b>1243</b> | <b>1592</b> | <b>1531</b> | <b>1681</b> | <b>1478</b> | <b>1810</b> | <b>1760</b> | <b>1788</b> | <b>932</b> | <b>1439</b> | <b>1276</b> | <b>1468</b> | <b>17998</b> | <b>100%</b> |

<sup>1</sup> Due to low numbers, 'firework injury' (n=5) has been included under 'other injury'.

**Table 2: Injury attendances by source of referral, April 2012 to March 2013**

| Source of referral | Apr         | May         | Jun         | July        | Aug         | Sept        | Oct         | Nov         | Dec        | Jan         | Feb         | Mar         | Total        | %           |
|--------------------|-------------|-------------|-------------|-------------|-------------|-------------|-------------|-------------|------------|-------------|-------------|-------------|--------------|-------------|
| Self               | 410         | 487         | 463         | 544         | 543         | 594         | 576         | 539         | 350        | 507         | 418         | 462         | 5893         | 33%         |
| Other              | 300         | 492         | 453         | 487         | 307         | 539         | 502         | 550         | 223        | 312         | 352         | 399         | 4916         | 27%         |
| Consultant         | 275         | 311         | 318         | 361         | 346         | 389         | 363         | 370         | 171        | 311         | 280         | 315         | 3810         | 21%         |
| GP                 | 233         | 264         | 263         | 255         | 269         | 259         | 277         | 285         | 167        | 270         | 189         | 258         | 2989         | 17%         |
| ED                 | 25          | 38          | 34          | 34          | 13          | 29          | 42          | 44          | 21         | 39          | 37          | 34          | 390          | 2%          |
| <b>Total</b>       | <b>1243</b> | <b>1592</b> | <b>1531</b> | <b>1681</b> | <b>1478</b> | <b>1810</b> | <b>1760</b> | <b>1788</b> | <b>932</b> | <b>1439</b> | <b>1276</b> | <b>1468</b> | <b>17998</b> | <b>100%</b> |

**Table 3: Injury attendances by incident location, April 2012 to March 2013<sup>2</sup>**

| Incident location            | Apr         | May         | Jun         | July        | Aug         | Sept        | Oct         | Nov         | Dec        | Jan         | Feb         | Mar         | Total        | %           |
|------------------------------|-------------|-------------|-------------|-------------|-------------|-------------|-------------|-------------|------------|-------------|-------------|-------------|--------------|-------------|
| Home                         | 462         | 631         | 622         | 710         | 621         | 765         | 721         | 744         | 412        | 648         | 566         | 658         | 7560         | 42%         |
| Other                        | 447         | 528         | 499         | 536         | 456         | 496         | 445         | 437         | 256        | 417         | 369         | 434         | 5320         | 30%         |
| Public place                 | 171         | 186         | 173         | 197         | 238         | 269         | 244         | 247         | 117        | 155         | 156         | 150         | 2303         | 13%         |
| Work                         | 107         | 120         | 146         | 152         | <145        | 164         | 210         | 188         | <85        | 140         | 111         | 119         | 1679         | 9%          |
| Educational establishment    | 27          | 111         | 74          | 69          | ***         | <90         | 108         | 130         | 45         | 49          | 52          | 77          | 834          | 5%          |
| Licensed premises            | <30         | 11          | <20         | <15         | 11          | 24          | <30         | <40         | <20        | <30         | <20         | 25          | 256          | 1%          |
| Countess of Chester Hospital | ***         | 5           | ***         | ***         | 8           | ***         | ***         | ***         | ***        | ***         | ***         | 5           | 46           | 0%          |
| <b>Total</b>                 | <b>1243</b> | <b>1592</b> | <b>1531</b> | <b>1681</b> | <b>1478</b> | <b>1810</b> | <b>1760</b> | <b>1788</b> | <b>932</b> | <b>1439</b> | <b>1276</b> | <b>1468</b> | <b>17998</b> | <b>100%</b> |

**Table 4: Injury attendances by discharge destination, April 2012 to March 2013**

| Discharge                                  | Apr         | May         | Jun         | July        | Aug         | Sept        | Oct         | Nov         | Dec        | Jan         | Feb         | Mar         | Total        | %           |
|--|-------------|-------------|-------------|-------------|-------------|-------------|-------------|-------------|------------|-------------|-------------|-------------|--------------|-------------|
| Discharged with no further treatment       | 674         | 864         | 829         | 912         | 712         | 915         | 878         | 886         | 468        | 800         | 669         | 750         | 9357         | 52%         |
| Discharged to follow up treatment by GP    | 165         | 213         | 205         | 195         | 247         | 271         | 294         | 303         | 133        | 175         | 193         | 242         | 2636         | 15%         |
| Referred to Fracture Clinic                | 131         | 168         | 170         | 195         | 167         | 216         | 181         | 174         | 98         | 167         | 131         | 180         | 1978         | 11%         |
| Admitted to a hospital bed                 | 92          | 122         | 119         | 115         | 139         | 112         | 135         | 98          | 51         | 77          | 119         | 126         | 1305         | 7%          |
| Refused treatment                          | 61          | 71          | 48          | 115         | 69          | 115         | 100         | 153         | 90         | 112         | 44          | 52          | 1030         | 6%          |
| Referred to outpatient clinic              | 44          | 51          | 50          | 41          | 35          | 55          | 59          | 68          | 38         | 46          | 45          | 43          | 575          | 3%          |
| Left before treatment                      | 32          | 46          | 40          | 42          | 58          | 41          | 47          | 42          | 16         | 25          | 39          | 36          | 464          | 3%          |
| Referred to other health care professional | 37          | 46          | 52          | 51          | 29          | 58          | 49          | 39          | 18         | 17          | 24          | 23          | 443          | 2%          |
| Transferred to other health care provider  | ***         | <15         | 18          | 15          | <25         | 27          | 17          | 25          | 20         | 20          | 12          | <20         | 203          | 1%          |
| Died in department                         | ***         | ***         | 0           | 0           | ***         | 0           | 0           | 0           | 0          | 0           | 0           | ***         | 7            | 0%          |
| <b>Total</b>                               | <b>1243</b> | <b>1592</b> | <b>1531</b> | <b>1681</b> | <b>1478</b> | <b>1810</b> | <b>1760</b> | <b>1788</b> | <b>932</b> | <b>1439</b> | <b>1276</b> | <b>1468</b> | <b>17998</b> | <b>100%</b> |

**Table 5: Location of assault for assault attendances, April 2012 to March 2013**

| Incident Location            | Apr        | May       | Jun       | Jul       | Aug       | Sep       | Oct       | Nov       | Dec       | Jan       | Feb       | Mar       | Total      | %           |
|------------------------------|------------|-----------|-----------|-----------|-----------|-----------|-----------|-----------|-----------|-----------|-----------|-----------|------------|-------------|
| Other location               | 39         | 28        | 35        | 34        | 35        | 23        | 22        | 15        | 17        | 36        | 23        | 28        | 335        | 36%         |
| Public place                 | 23         | 24        | 21        | 18        | 22        | 22        | 18        | 25        | 16        | 13        | 15        | 17        | 234        | 25%         |
| Home                         | 17         | 10        | 11        | 18        | 11        | 9         | 13        | 17        | 15        | 18        | 12        | 11        | 162        | 18%         |
| Licensed premises            | 12         | 8         | <10       | <10       | ***       | 13        | 10        | 17        | <10       | 14        | 7         | 10        | 119        | 13%         |
| Work                         | <10        | ***       | ***       | ***       | ***       | ***       | ***       | 6         | ***       | ***       | ***       | ***       | 42         | 5%          |
| Educational establishment    | ***        | ***       | 0         | 0         | ***       | ***       | ***       | ***       | 0         | ***       | ***       | ***       | 18         | 2%          |
| Countess of Chester Hospital | 0          | 0         | 0         | 0         | ***       | ***       | 0         | ***       | 0         | ***       | ***       | ***       | 8          | 1%          |
| <b>Total</b>                 | <b>103</b> | <b>74</b> | <b>78</b> | <b>82</b> | <b>79</b> | <b>71</b> | <b>66</b> | <b>83</b> | <b>58</b> | <b>90</b> | <b>62</b> | <b>72</b> | <b>918</b> | <b>100%</b> |

Published April 2014, Stuart Cole (TIIG researcher)

Centre for Public Health, Faculty of Health and Applied Social Sciences, Liverpool John Moores University

2<sup>nd</sup> Floor, Henry Cotton Campus, 15-21 Webster Street, Liverpool, L3 2ET

Contact: Jennifer Brizell. Tel: 0151 231 4500 Email: [J.S.Brizell@ljmu.ac.uk](mailto:J.S.Brizell@ljmu.ac.uk)

Website: [www.tiig.info](http://www.tiig.info) (please note all data requests should be made through the TIIG website)

<sup>2</sup> \*\*\* Please note that all numbers less than five have been suppressed in line with patient confidentiality and if there is only one number less than five in a category then two numbers will be suppressed at the next level (e.g. <6) in order to prevent back calculations from totals.