

# TIIG

INJURY SURVEILLANCE IN THE NORTH WEST OF ENGLAND

## Countess of Chester Hospital Emergency Department Monthly Bulletin: April 2013 – March 2014

This bulletin provides a breakdown of all injury attendances at Countess of Chester Hospital Emergency Department (ED) between April 2013 and March 2014.

Between April 2013 and March 2014 there were 17,693 injury attendances. Injury attendances peaked in July (n=1,806), with February (n=1,065) having the least number of injury attendances (**Figure 1**).

For all months there were more male injury attendances than female presenting at Countess of Chester Hospital ED (56%).

**Figure 2** presents the age group of injury attendances. Across the whole year approximately one third of injury attendances were made by individuals aged 30 to 59 years (32%); 18 to 29 year olds accounted for 24% of total attendances.

**Table 1** details the patient group for injury attendances to Countess of Chester ED. Three quarters of injury attendances were classified as other injury (75%, n=13,339); 8% were recorded as

road traffic collisions (RTCs) and 7% as sports injuries.

**Table 2** presents injury attendances by location of incident. Over four in ten were recorded as occurring in the home (42%); 12% in public places and 8% occurred at work.

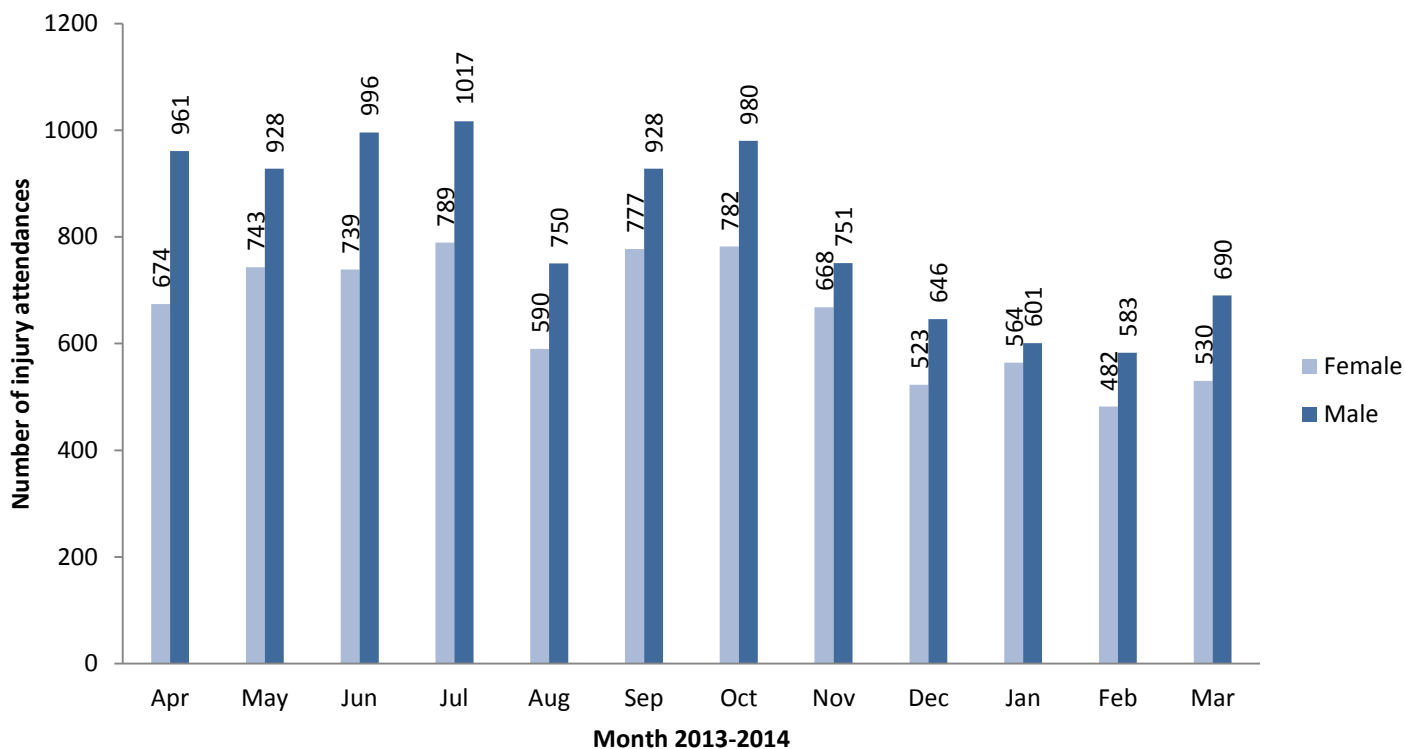
**Table 3** shows the discharge destination of injury attendances. Half (50%) of attendees were discharged and required no further treatment; 15% were discharged to treatment by General Practitioner (GP) and 11% were referred to a fracture clinic.

**Table 4** shows the primary location of assault was recorded as occurring in other locations (35%); public place (27%) and at home (18%).

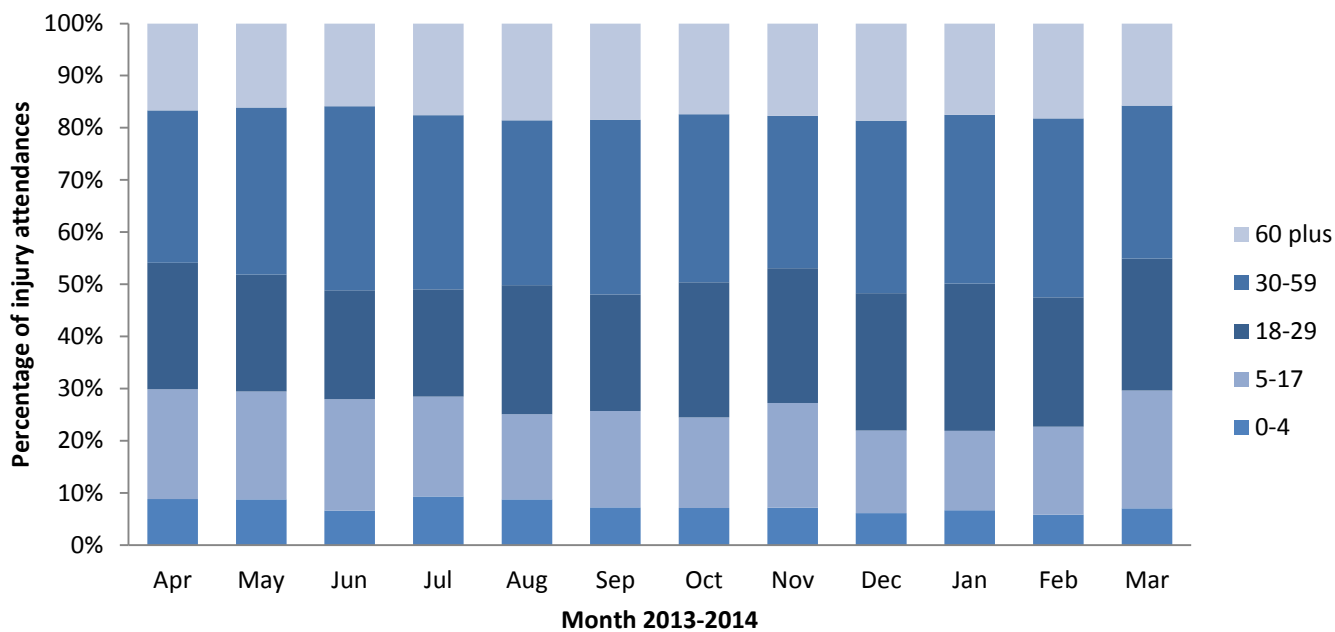
### Assaults

There were 837 assault attendances at Countess of Chester Hospital ED between April 2013 and March 2014. Assault attendees presenting at Countess of Chester Hospital ED were mainly male (72%) and the majority (53%) were aged between 18 and 29 years.

**Figure 1: Gender of injury attendances by month, April 2013 to March 2014**



**Figure 2: Age group of injury attendances by month, April 2013 to March 2014**



**Table 1: Injury attendances by injury group, April 2013 to March 2014**

Injury group	Apr	May	Jun	July	Aug	Sept	Oct	Nov	Dec	Jan	Feb	Mar	Total	%
Other injury	1199	1297	1349	1466	1018	1335	1356	1037	822	850	725	885	13339	75%
Road traffic collision	123	121	110	113	92	78	121	130	108	111	139	95	1341	8%
Sports injury	154	105	111	112	92	144	127	113	73	67	78	108	1284	7%
Assault	83	66	92	63	67	75	89	58	78	60	46	60	837	5%
Deliberate self-harm	76	82	73	52	71	73	69	81	89	77	77	72	892	5%
<b>Total</b>	<b>1635</b>	<b>1671</b>	<b>1735</b>	<b>1806</b>	<b>1340</b>	<b>1705</b>	<b>1762</b>	<b>1419</b>	<b>1170</b>	<b>1165</b>	<b>1065</b>	<b>1220</b>	<b>17693</b>	<b>100%</b>

**Table 2: Injury attendances by incident location, April 2013 to March 2014<sup>1</sup>**

Incident location	Apr	May	Jun	July	Aug	Sept	Oct	Nov	Dec	Jan	Feb	Mar	Total	%
Home	634	691	723	815	571	723	736	605	509	536	446	472	7461	42%
Other	617	543	544	553	443	519	517	377	375	328	331	385	5532	31%
Public place	175	208	232	218	181	176	186	186	128	140	145	153	2128	12%
Work	116	123	137	131	126	167	195	126	86	94	69	98	1468	8%
Educational establishment	72	83	63	65	***	<100	103	104	52	45	50	98	833	5%
Licensed premises	<20	<25	<35	18	13	21	<25	<20	<20	<25	24	<15	237	1%
Countess of Chester Hospital	***	***	***	6	***	***	***	***	***	***	0	***	34	0%
<b>Total</b>	<b>1635</b>	<b>1671</b>	<b>1735</b>	<b>1806</b>	<b>1340</b>	<b>1705</b>	<b>1762</b>	<b>1419</b>	<b>1170</b>	<b>1165</b>	<b>1065</b>	<b>1220</b>	<b>17693</b>	<b>100%</b>

**Table 3: Injury attendances by discharge destination, April 2013 to March 2014**

Discharge	Apr	May	Jun	July	Aug	Sept	Oct	Nov	Dec	Jan	Feb	Mar	Total	%
Discharged with no further treatment	813	867	919	905	688	820	980	707	544	536	476	613	8868	50%
Discharged to follow up treatment by GP	287	267	266	268	221	259	242	185	179	194	179	172	2719	15%
Referred to Fracture Clinic	192	199	216	240	145	219	184	161	119	112	96	135	2018	11%
Admitted to a hospital bed	141	127	131	145	104	136	92	88	79	98	86	76	1303	7%
Refused treatment	59	63	71	108	92	120	103	153	147	97	113	121	1247	7%
Referred to outpatient clinic	55	47	40	53	31	54	51	43	26	30	34	40	504	3%
Left before treatment	46	43	43	33	18	49	41	21	31	31	34	23	413	2%
Referred to other health care professional	35	43	41	41	30	32	49	38	30	35	21	31	426	2%
Transferred to other health care provider	7	<15	8	13	11	16	20	<25	15	<20	8	<10	<160	1%
Died in department	0	***	0	0	0	0	0	***	0	***	0	***	***	0%
Other	0	0	0	0	0	0	0	0	0	14	18	0	32	0%
<b>Total</b>	<b>1635</b>	<b>1671</b>	<b>1735</b>	<b>1806</b>	<b>1340</b>	<b>1705</b>	<b>1762</b>	<b>1419</b>	<b>1170</b>	<b>1165</b>	<b>1065</b>	<b>1220</b>	<b>17693</b>	<b>100%</b>

**Table 4: Location of assault for assault attendances, April 2013 to March 2014**

Incident Location	Apr	May	Jun	Jul	Aug	Sep	Oct	Nov	Dec	Jan	Feb	Mar	Total	%
Other location	26	17	41	24	25	20	33	18	32	19	13	22	290	35%
Public place	25	21	16	19	19	19	23	17	18	19	13	16	225	27%
Home	18	14	13	10	12	15	14	7	15	13	8	11	150	18%
Licensed premises	7	7	16	6	6	7	10	8	7	5	9	7	95	11%
Work	***	***	***	***	***	12	***	***	***	***	***	***	45	5%
Educational establishment	***	***	***	***	0	***	***	<10	***	***	***	***	23	3%
Countess of Chester Hospital	***	***	***	***	***	***	***	0	0	0	0	0	9	1%
<b>Total</b>	<b>83</b>	<b>66</b>	<b>92</b>	<b>63</b>	<b>67</b>	<b>75</b>	<b>89</b>	<b>58</b>	<b>78</b>	<b>60</b>	<b>46</b>	<b>60</b>	<b>837</b>	<b>100%</b>

Published May 2014,  
 Stuart Cole (TIIG researcher)  
 Centre for Public Health, Faculty of Education, Health and Community, Liverpool John Moores University  
 2<sup>nd</sup> Floor, Henry Cotton Campus, 15-21 Webster Street, Liverpool, L3 2ET  
 Contact: Jennifer Brizell, Tel: 0151 231 4500, Email: [j.s.brizell@ljmu.ac.uk](mailto:j.s.brizell@ljmu.ac.uk)

<sup>1</sup> \*\*\* Please note that all numbers less than five have been suppressed in line with patient confidentiality and if there is only one number less than five in a category then two numbers will be suppressed at the next level (e.g. <6) in order to prevent back calculations from totals.

Data regarding Injury attendances by source for referral is absent from this report. An updated report including referral source will be made available following retrieval of data from ED.