

## Leighton Hospital Emergency Department Monthly Bulletin: April 2009 to March 2010

This bulletin provides a breakdown of all injury attendances at Leighton Hospital Emergency Department (ED) between April 2009 and March 2010.

Between April 2009 and March 2010 there were 39,861 injury attendances. Injury attendances peaked in June (n=3,860), with February (n=2,454) having the least number of injury attendances (**Figure 1**).

For all months there were more male injury attendances than female presenting at Leighton Hospital ED (56%).

**Figure 2** presents the age group of injury attendances. Across the whole year the majority of injury attendances were made by individuals aged 30-59 years.

**Table 1** details the injury group of injury attendances. The majority of injury attendances

were classified as 'other injury' (85%); 6% were recorded as road traffic collisions (RTCs) and 3% assaults.

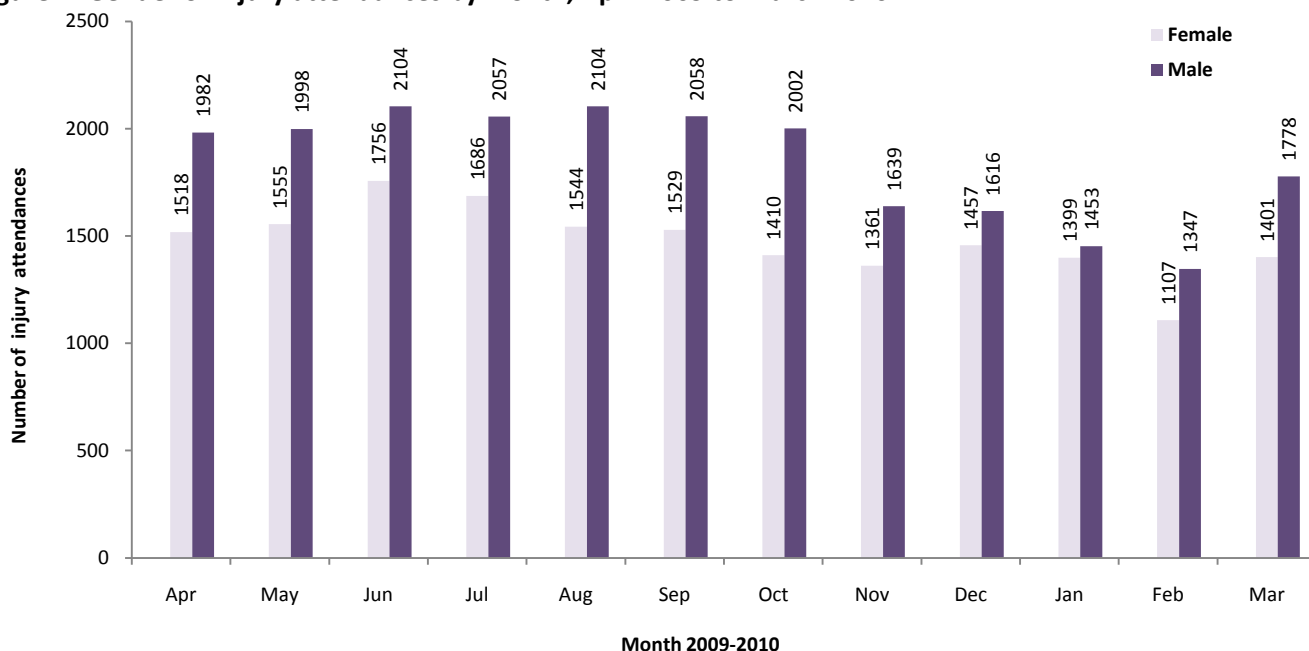
**Table 2** illustrates the source of referral for patients presenting with injuries. The majority (73%) of injury attendees self-referred.

**Table 3** presents injury attendances by location of incident. A third (34%) were recorded as occurring in a public place and 29% in the home.

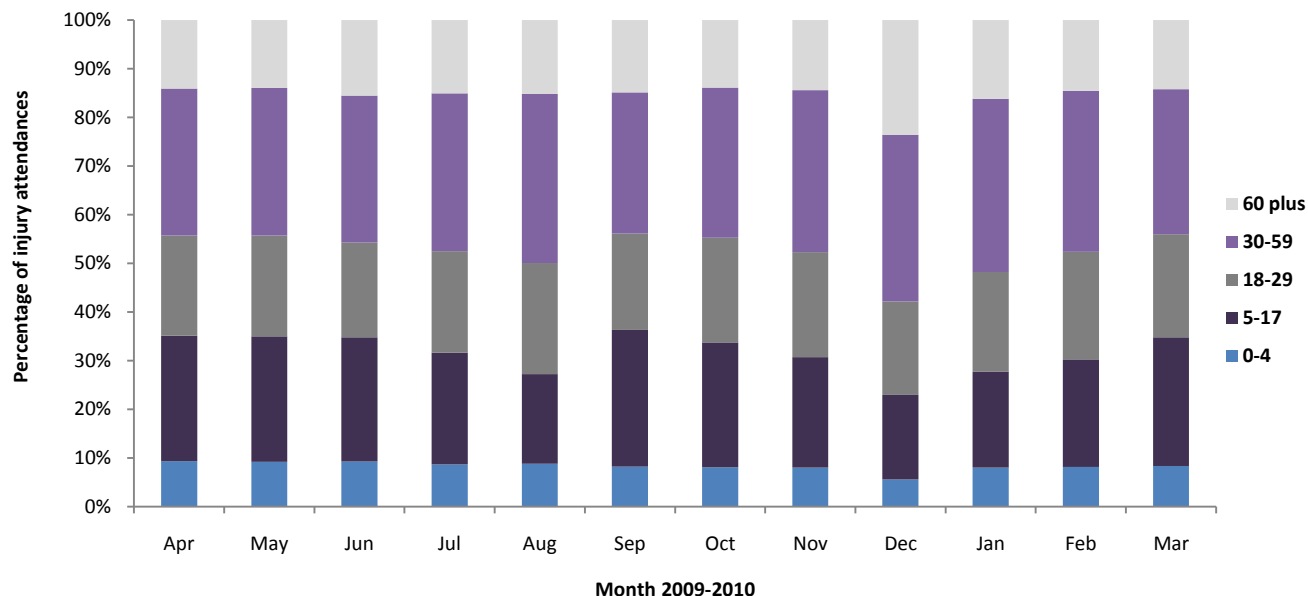
**Table 4** shows the discharge destination of injury attendances. Almost seven in ten of attendees were discharged (67%).

Assault attendees presenting at Leighton Hospital ED between April 2009 and March 2010 were mainly male (74%) and the majority (47%) were aged between 18 and 29 years of age. **Table 5** shows the primary location of assault was recorded as occurring in a public place (52%).

**Figure 1: Gender of injury attendances by month, April 2009 to March 2010**



**Figure 2: Age group of injury attendances by month, April 2009 to March 2010**



**Table 1: Injury attendances by injury group, April 2009 to March 2010<sup>12</sup>**

Injury group	Apr	May	Jun	Jul	Aug	Sep	Oct	Nov	Dec	Jan	Feb	Mar	Total	%
Other Injury	2993	3036	3301	3197	3049	3038	2910	2542	2661	2486	2095	2774	34082	86%
RTC	171	221	228	205	159	222	194	221	199	145	152	153	2270	6%
Assault	134	119	123	128	177	105	121	96	97	83	84	94	1361	3%
Sports injury	95	79	99	38	67	121	85	63	52	66	62	84	911	2%
Deliberate self-harm	69	66	52	66	78	38	61	44	45	59	47	57	682	2%
Bites/stings	38	32	57	109	118	63	41	34	19	13	14	17	555	1%
<b>Total</b>	<b>3500</b>	<b>3553</b>	<b>3860</b>	<b>3743</b>	<b>3648</b>	<b>3587</b>	<b>3412</b>	<b>3000</b>	<b>3073</b>	<b>2852</b>	<b>2454</b>	<b>3179</b>	<b>39861</b>	<b>100%</b>

**Table 2: Injury attendances by source of referral, April 2009 to March 2010**

Source of referral	Apr	May	Jun	Jul	Aug	Sep	Oct	Nov	Dec	Jan	Feb	Mar	Total	%
Self referral	2614	2529	2804	2796	2758	2632	2461	2254	2219	2116	1765	2294	29242	73
Emergency services	345	401	370	402	393	330	344	318	394	288	264	325	4174	10
Other	325	390	404	335	315	394	403	261	291	252	234	366	3970	10
Work	25	38	50	39	49	60	57	31	36	46	57	31	519	1
Educational establishment	23	43	66	32	***	47	43	39	38	41	44	57	474	1
Referred from minor injury unit	45	52	56	48	46	38	32	27	31	28	17	41	461	1
General practitioner	48	40	28	23	23	37	23	27	28	36	36	34	383	1
Unknown	34	20	30	36	19	18	25	8	9	9	5	17	230	1
Police	15	16	14	11	24	9	13	11	8	15	15	5	156	0
NHS direct	13	18	10	***	10	8	7	13	10	15	11	5	124	0
Health care provider	11	6	25	17	9	12	***	10	9	5	6	***	117	0
Local authority social services	***	***	***	***	***	***	***	***	***	***	***	***	11	0
<b>Total</b>	<b>3500</b>	<b>3553</b>	<b>3860</b>	<b>3743</b>	<b>3648</b>	<b>3587</b>	<b>3412</b>	<b>3000</b>	<b>3073</b>	<b>2852</b>	<b>2454</b>	<b>3179</b>	<b>39861</b>	<b>100</b>

<sup>1</sup> \*\*\* Please note that all numbers less than five have been suppressed in line with patient confidentiality and if there is only one number in a category then two numbers will be suppressed at the next level (e.g. <6) in order to prevent back calculations from totals.

<sup>2</sup> \*\*\* Due to low numbers and patient confidentiality firework injuries have been categorised under other injury

**Table 3: Injury attendances by location of incident, April 2009 to March 2010**

Incident location	Apr	May	Jun	Jul	Aug	Sep	Oct	Nov	Dec	Jan	Feb	Mar	Total	%
Public place	1150	1259	1296	1258	1269	1328	1189	912	1087	1039	744	967	13498	34
Home	1065	1170	1212	1150	1096	974	898	836	918	787	674	934	11714	29
Unknown	736	604	693	727	802	608	666	668	548	548	514	630	7744	19
Work	233	192	226	224	229	236	239	213	212	200	217	238	2659	7
Other	203	163	240	264	247	222	207	184	180	149	153	190	2402	6
Educational establishment	113	165	193	120	5	219	213	187	128	129	152	220	1844	5
<b>Total</b>	<b>3500</b>	<b>3553</b>	<b>3860</b>	<b>3743</b>	<b>3648</b>	<b>3587</b>	<b>3412</b>	<b>3000</b>	<b>3073</b>	<b>2852</b>	<b>2454</b>	<b>3179</b>	<b>39861</b>	<b>100</b>

**Table 4: Injury attendances by discharge destination, April 2009 to March 2010**

Discharge destination	Apr	May	Jun	Jul	Aug	Sep	Oct	Nov	Dec	Jan	Feb	Mar	Total	%
Discharged	2377	2356	2503	2466	2408	2411	2298	2112	1905	1816	1699	2182	26533	67
Referred	946	985	1126	1039	1041	967	912	770	982	924	658	864	11214	28
Other	89	124	149	157	124	124	146	58	112	55	37	54	1229	3
Admitted	88	88	82	81	75	85	56	60	74	57	60	79	885	2
Unknown	***	***	***	***	***	***	***	***	***	***	***	***	***	0
<b>Total</b>	<b>3500</b>	<b>3553</b>	<b>3860</b>	<b>3743</b>	<b>3648</b>	<b>3587</b>	<b>3412</b>	<b>3000</b>	<b>3073</b>	<b>2852</b>	<b>2454</b>	<b>3179</b>	<b>39861</b>	<b>100</b>

**Table 5: Location of assault for assault attendances, April 2009 to March 2010**

Assault location	Apr	May	Jun	Jul	Aug	Sep	Oct	Nov	Dec	Jan	Feb	Mar	Total	%
Public place	57	73	57	67	103	61	77	54	39	40	38	45	711	52
Unknown	36	8	20	41	32	20	20	20	18	17	17	18	267	20
Home	22	22	22	13	30	18	13	10	32	14	17	20	233	17
Other	10	5	10	5	8	***	***	***	***	***	7	5	65	5
Educational establishment	***	9	10	***	***	***	7	7	***	***	***	***	52	4
Work	5	***	***	***	***	***	***	***	***	***	***	***	33	2
<b>Total</b>	<b>134</b>	<b>119</b>	<b>123</b>	<b>128</b>	<b>177</b>	<b>105</b>	<b>121</b>	<b>96</b>	<b>97</b>	<b>83</b>	<b>84</b>	<b>94</b>	<b>1361</b>	<b>100</b>

Published January 2011

Jennifer Brizell (Merseyside and Cheshire TIIG officer)

Centre for Public Health, Faculty of Health and Applied Social Sciences, Liverpool John Moores University

3rd Floor, Henry Cotton Campus, 15-21 Webster Street, Liverpool, L3 2ET

Tel: 0151 231 4500 Email: [j.s.brizell@ljmu.ac.uk](mailto:j.s.brizell@ljmu.ac.uk)Website: [www.tiig.info](http://www.tiig.info) (please note all data requests should be made through the TIIG website)