

Leighton Hospital Emergency Department Monthly Bulletin: July 2010 – June 2011

This bulletin provides a breakdown of all injury attendances at Leighton Hospital Emergency Department (ED) between July 2010 and June 2011.

Between July 2010 and June 2011 there were 38,833 injury attendances. Injury attendances peaked in June (n=3,675), with January (n=2,607) having the least number of injury attendances (**Figure 1**).

For all months there were more male injury attendances than female presenting at Leighton Hospital ED (56%).

Figure 2 presents the age group of injury attendances. Across the whole year the majority of injury attendances were made by individuals aged 30-59 years.

Table 1 details the injury group of injury attendances. The majority of injury attendances were classified as 'other injury' (86%); 5% were

recorded as road traffic collisions (RTCs) and 3% assaults.

Table 2 illustrates the source of referral for patients presenting with injuries. The majority (70%) of injury attendees self-referred.

Table 3 presents injury attendances by location of incident. Almost a third (31%) were recorded as occurring in a public place and 29% in the home.

Table 4 shows the discharge destination of injury attendances. Over two thirds of attendees were discharged (67%).

Assault attendees presenting at Leighton Hospital ED between July 2010 and June 2011 were mainly male (72%) and the majority (45%) were aged between 18 and 29 years of age. **Table 5** shows the primary location of assault was recorded as occurring in a public place (42%).

Figure 1: Gender of injury attendances by month, July 2010 to June 2011

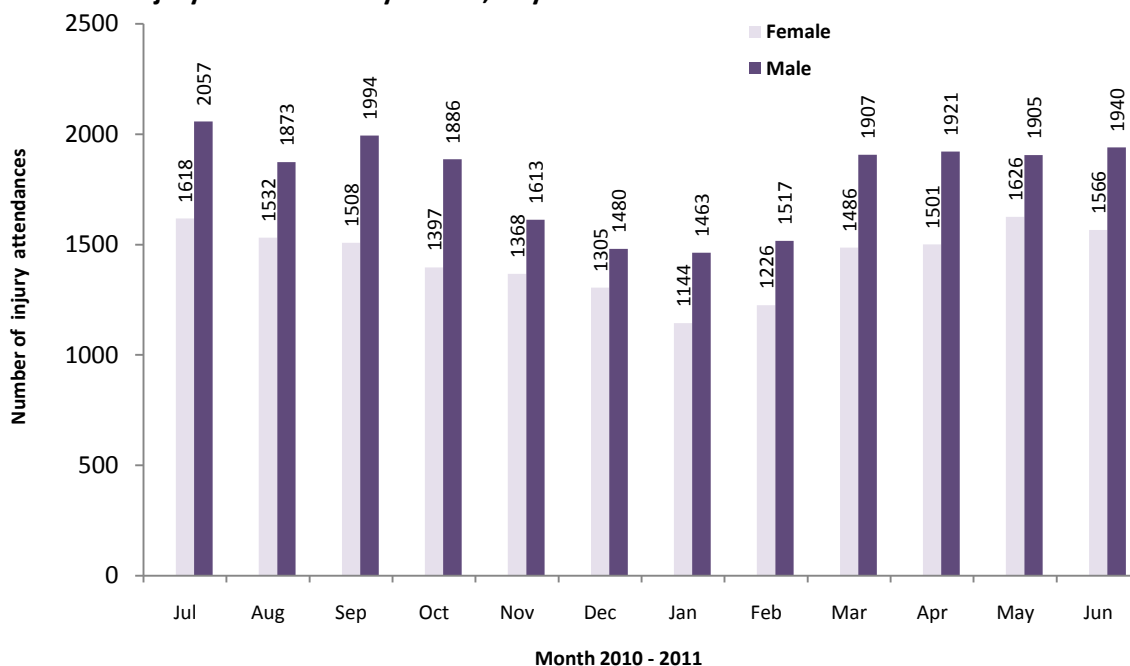


Figure 2: Age group of injury attendances by month, July 2010 to June 2011

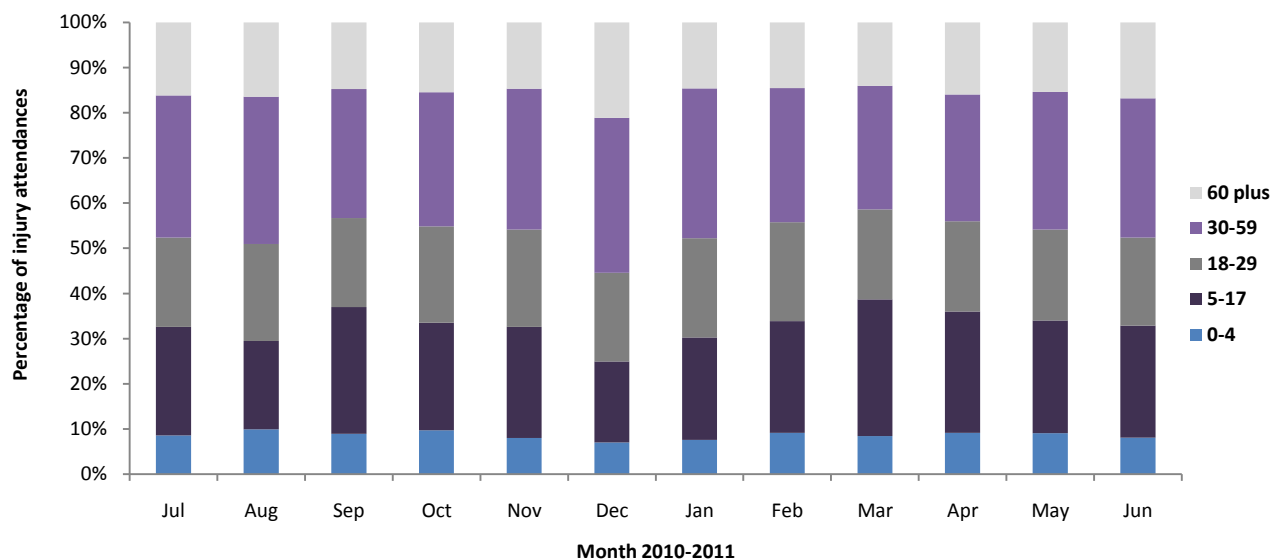


Table 1: Injury attendances by injury group, July 2010 to June 2011¹²

Injury group	Jul	Aug	Sep	Oct	Nov	Dec	Jan	Feb	Mar	Apr	May	Jun	Total	%
Other injury	3228	2906	3005	2772	2493	2432	2219	2373	2892	2968	3078	3023	33389	86%
RTC	144	185	177	213	218	177	155	144	171	120	142	200	2046	5%
Assault	95	126	116	97	101	85	96	52	103	128	101	89	1189	3%
Sports injury	66	61	100	125	101	20	78	104	149	83	85	71	1043	3%
Deliberate self-harm	51	62	54	48	49	52	40	52	51	67	81	63	670	2%
Bites/stings	91	65	50	28	19	19	19	18	27	56	44	60	496	1%
Total	3675	3405	3502	3283	2981	2785	2607	2743	3393	3422	3531	3506	38833	100%

Table 2: Injury attendances by source of referral, July 2010 to June 2011

Source of referral	Jul	Aug	Sep	Oct	Nov	Dec	Jan	Feb	Mar	Apr	May	Jun	Total	%
Self referral	2656	2548	2365	2184	1960	1897	1945	1954	2389	2472	2485	2499	27354	70
Other	444	350	478	499	466	319	227	324	428	446	481	440	4902	13
Emergency services	318	361	369	343	347	368	285	289	329	343	359	387	4098	11
Educational establishment	58	***	83	80	69	60	43	46	108	<40	40	43	664	2
Referred from minor injuries unit	45	50	60	55	43	28	34	44	47	38	64	36	544	1
Work	63	31	63	56	51	45	31	33	45	38	28	34	518	1
General Practitioner	30	22	28	25	14	24	16	29	23	20	31	29	291	1
Unknown	16	11	<15	<10	<10	11	***	9	9	<10	13	13	119	0
Police	<15	11	13	8	8	19	7	11	***	9	<10	<10	117	0
NHS direct	13	<10	17	16	6	<10	6	***	7	8	15	8	115	0
Health care provider	21	10	16	7	10	7	9	***	***	9	7	6	107	0
Local authority social services	***	***	***	***	***	***	***	***	***	***	***	***	***	0
Total	3675	3405	3502	3283	2981	2785	2607	2743	3393	3422	3531	3506	38833	100

¹ *** Please note that all numbers less than five have been suppressed in line with patient confidentiality and if there is only one number in a category then two numbers will be suppressed at the next level (e.g. <6) in order to prevent back calculations from totals.

² Due to low numbers and patient confidentiality firework injuries have been categorised under other injury.

Table 3: Injury attendances by location of incident, July 2010 to June 2011

Incident location	Jan	Feb	Mar	Apr	May	Jun	Jul	Aug	Sep	Oct	Nov	Dec	Total	%
Public place	1235	1162	1130	1080	916	950	752	744	970	970	1044	1044	11997	31
Home	1070	987	1041	969	865	785	657	769	874	1033	1071	979	11100	29
Unknown	621	799	545	499	406	463	696	632	714	834	642	744	7595	20
Other	328	240	219	206	222	199	134	186	274	283	305	283	2879	7
Work	266	203	272	263	277	214	186	201	207	181	246	261	2777	7
Educational establishment	155	14	295	266	295	174	182	211	354	121	223	195	2485	6
Total	3675	3405	3502	3283	2981	2785	2607	2743	3393	3422	3531	3506	38833	100

Table 4: Injury attendances by discharge destination, July 2010 to June 2011

Discharge	Jul	Aug	Sep	Oct	Nov	Dec	Jan	Feb	Mar	Apr	May	Jun	Total	%
Discharged	2455	2393	2446	2270	2041	1754	1842	1858	2354	2265	2300	2226	26204	67
Referred	1062	906	937	903	837	910	668	754	881	976	1060	1098	10992	28
Admitted	48	43	42	47	36	39	55	56	67	104	89	90	716	2
Other	110	63	77	63	67	82	42	75	91	77	82	92	921	2
Total	3675	3405	3502	3283	2981	2785	2607	2743	3393	3422	3531	3506	38833	100

Table 5: Location of assault for assault attendances, July 2010 to June 2011

Incident location	Jan	Feb	Mar	Apr	May	Jun	Jul	Aug	Sep	Oct	Nov	Dec	Total	%
Public place	47	48	36	39	44	31	40	24	47	50	51	38	495	42
Unknown	22	37	35	22	13	16	27	8	24	39	16	16	275	23
Home	14	32	27	18	21	18	18	7	14	22	17	26	234	20
Other	6	6	8	9	9	10	***	8	<10	12	11	5	93	8
Educational establishment	***	***	<10	<10	8	<10	6	***	7	***	***	***	52	4
Work	***	***	***	***	6	***	***	***	***	***	***	***	40	3
Total	95	126	116	97	101	85	96	52	103	128	101	89	1189	100

Published July 2011

Jennifer Brizell (Merseyside and Cheshire TIIG officer)

Centre for Public Health, Faculty of Health and Applied Social Sciences, Liverpool John Moores University
2nd Floor, Henry Cotton Campus, 15-21 Webster Street, Liverpool, L3 2ETTel: 0151 231 4500 Email: j.s.brizell@ljmu.ac.ukWebsite: www.tiig.info (please note all data requests should be made through the TIIG website)