

TIIG

INJURY SURVEILLANCE IN THE NORTH WEST OF ENGLAND

Leighton Hospital Emergency Department Monthly Bulletin: January – December 2012

This bulletin provides a breakdown of all injury attendances at Leighton Hospital Emergency Department (ED) between January and December 2012.

Between January and December 2012 there were 36,642 injury attendances. Injury attendances peaked in July (n=3,492), with December (n=2,572) having the least number of injury attendances (Figure 1).

For all months there were more male injury attendances than female presenting at Leighton Hospital ED (55%).

Figure 2 presents the age group of injury attendances. Across the whole year the majority of injury attendances were made by individuals aged 30 to 59 years (31%).

Table 1 details the patient group for injury attendances to Leighton ED. The majority of injury attendances were classified as other injury (88%);

5% were recorded as road traffic collisions (RTCs) and 3% assaults.

Table 2 illustrates the source of referral for patients presenting with injuries. The majority (71%) of injury attendees self-referred.

Table 3 presents injury attendances by location of incident. Around three in ten were recorded as occurring in the home (30%) or in a public place (29%).

Table 4 shows the discharge destination of injury attendances. Two-thirds (66%) of attendees were discharged.

There were 1,148 assault attendances at Leighton Hospital ED between January and December 2012. Assault attendees presenting at Leighton Hospital ED were mainly male (72%) and the majority (46%) were aged between 18 and 29 years. Table 5 shows the primary location of assault was recorded as occurring in a public place (43%).

Figure 1: Gender of injury attendances by month, January to December 2012

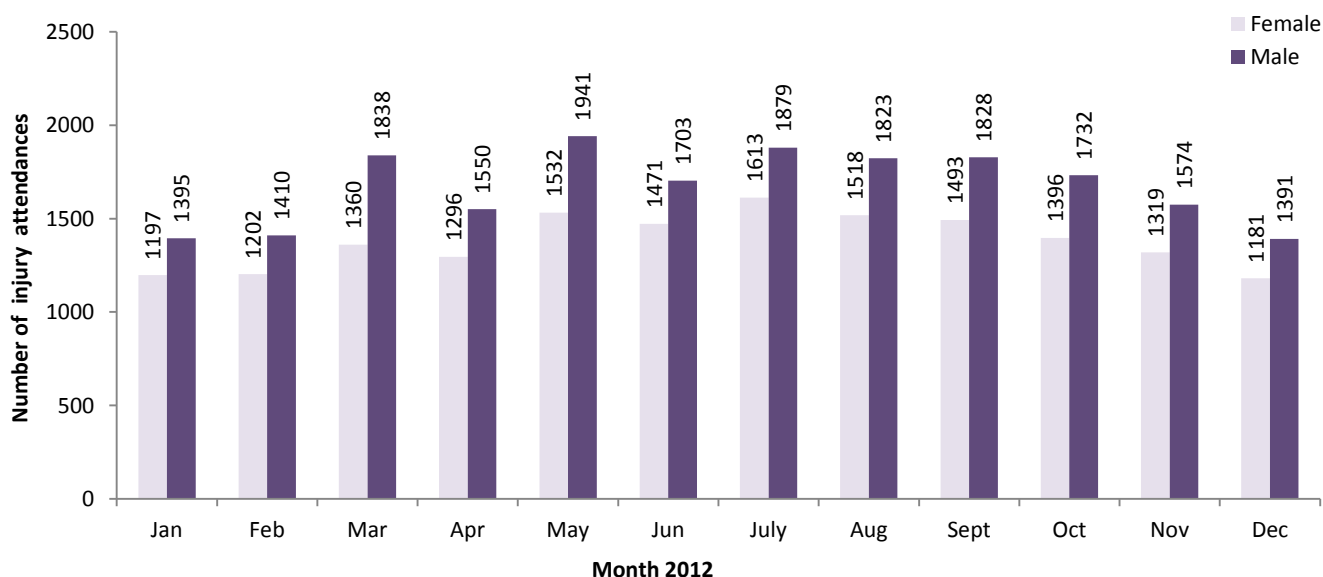


Figure 2: Age group of injury attendances by month, January to December 2012

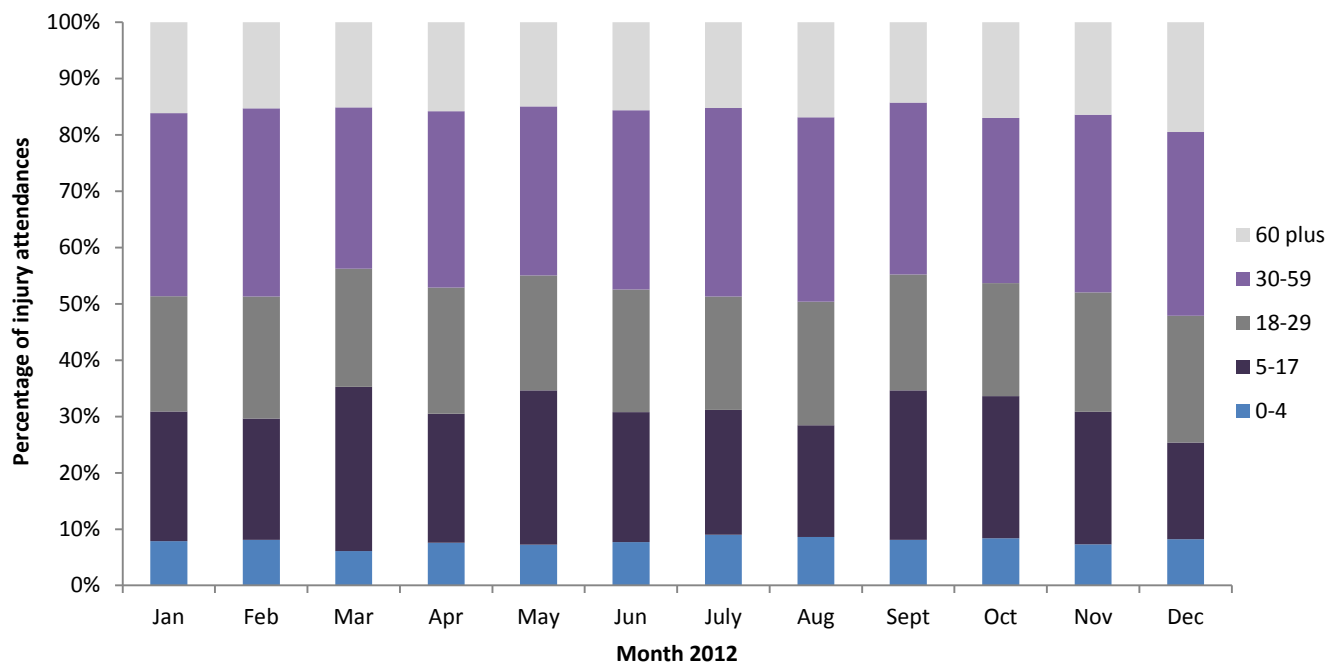


Table 1: Injury attendances by injury group, January to December 2012¹

Injury group	Jan	Feb	Mar	Apr	May	Jun	July	Aug	Sept	Oct	Nov	Dec	Total	%
Other injury	2263	2332	2834	2493	3090	2806	3073	2946	2913	2753	2557	2258	32318	88
RTC	163	140	127	178	168	182	185	145	197	181	184	149	1999	5
Assault	75	75	101	94	99	103	99	105	91	106	89	111	1148	3
Sports injury	70	40	94	58	85	29	59	50	72	55	36	23	671	2
Bites/stings	21	25	42	23	31	54	76	95	48	33	27	31	506	1
Total	2592	2612	3198	2846	3473	3174	3492	3341	3321	3128	2893	2572	36642	100

Table 2: Injury attendances by source of referral, January to December 2012¹

Source of referral	Jan	Feb	Mar	Apr	May	Jun	July	Aug	Sept	Oct	Nov	Dec	Total	%
Self-referral	1800	1852	2294	2020	2486	2350	2549	2433	2306	2141	1997	1830	26058	71
Other	303	327	381	339	477	356	401	361	472	435	304	244	4400	12
Emergency services	310	289	325	317	280	302	372	372	358	339	355	329	3948	11
Educational establishment	55	32	71	18	83	<22	32	***	54	63	67	29	526	1
Referred from MIU	29	36	54	49	50	32	44	64	39	35	40	33	505	1
Work	36	26	26	35	42	38	32	40	34	51	59	42	461	1
General Practitioner	26	24	17	30	22	27	31	26	22	32	26	22	305	1
Police	10	9	11	17	12	10	7	12	9	10	14	16	137	0
Unknown	***	5	10	10	5	14	9	15	12	7	14	<9	113	0
NHS Direct	12	8	***	6	11	<9	***	11	10	<7	10	9	99	0
Health Care Provider	7	***	5	<6	<6	16	10	6	<6	9	<8	10	<90	0
Local Authority Social Services	***	***	***	***	***	***	***	***	***	***	***	***	***	0
Total	2592	2612	3198	2846	3473	3174	3492	3341	3321	3128	2893	2572	36642	100

*MIU = Minor Injuries Unit

¹ *** Please note that for all tables, where there are numbers less than five these have been suppressed in line with patient confidentiality and if there is only one number in a category then two numbers will be suppressed at the next level (e.g. <6) in order to prevent back calculations from totals.

Table 3: Injury attendances by incident location, January to December 2012¹

Incident location	Jan	Feb	Mar	Apr	May	Jun	July	Aug	Sept	Oct	Nov	Dec	Total	%
Home	801	787	849	816	970	949	1062	1094	951	912	891	877	10959	30
Public place	672	713	930	870	1013	887	936	1099	1110	1002	853	681	10766	29
Unknown	447	539	616	622	631	716	752	660	510	404	400	449	6746	18
Other	267	222	291	246	315	265	367	251	284	288	188	200	3184	9
Work	207	208	222	201	241	229	224	231	256	284	285	216	2804	8
Educational establishment	198	143	290	91	303	128	151	6	210	238	276	149	2183	6
Total	2592	2612	3198	2846	3473	3174	3492	3341	3321	3128	2893	2572	36642	100

Table 4: Injury attendances by discharge destination, January to December 2012¹

Discharge	Jan	Feb	Mar	Apr	May	Jun	July	Aug	Sept	Oct	Nov	Dec	Total	%
Discharged	1681	1633	2050	1863	2251	2094	2350	2188	2226	2106	1981	1656	24079	66
Referred	833	914	1064	868	1067	960	1022	1056	990	941	851	826	11392	31
Other	60	47	48	94	111	91	87	66	79	55	49	83	870	2
Admitted	18	18	36	21	44	29	33	31	26	26	12	7	301	1
Total	2592	2612	3198	2846	3473	3174	3492	3341	3321	3128	2893	2572	36642	100

Table 5: Location of assault for assault attendances, January to December 2012¹

Incident location	Jan	Feb	Mar	Apr	May	Jun	July	Aug	Sept	Oct	Nov	Dec	Total	%
Public place	30	26	54	38	37	34	33	49	37	61	42	48	489	43
Unknown	12	20	10	22	33	23	26	20	20	11	12	18	227	20
Home	15	10	22	20	12	26	21	21	17	13	18	18	213	19
Other	13	11	9	8	10	7	14	12	7	8	12	16	127	11
Work	***	<8	***	<6	***	6	***	***	<7	5	***	<10	49	4
Educational establishment	***	***	***	***	<6	7	***	***	***	8	***	***	43	4
Total	75	75	101	94	99	103	99	105	91	106	89	111	1148	100

Published July 2013

Jennifer Brizell (TIIG researcher)

Centre for Public Health, Faculty of Health and Applied Social Sciences, Liverpool John Moores University
2nd Floor, Henry Cotton Campus, 15-21 Webster Street, Liverpool, L3 2ETTel: 0151 231 4500 Email: j.s.brizell@ljmu.ac.ukWebsite: www.tiig.info (please note all data requests should be made through the TIIG website)