



# TIIG

INJURY SURVEILLANCE IN THE NORTH WEST OF ENGLAND

## Leighton Hospital Emergency Department Monthly Bulletin: April 2013 – March 2014

This bulletin provides a breakdown of all injury attendances at Leighton Hospital Emergency Department (ED) between April 2013 and March 2014.

Between April 2013 and March 2014 there were 36,585 injury attendances. Injury attendances peaked in July (n=3,870), with February (n=2,515) having the least number of injury attendances (**Figure 1**).

For all months there were more male injury attendances than female presenting at Leighton Hospital ED (54%).

**Figure 2** presents the age group of injury attendances. Across the whole year over three in ten (31%) injury attendances were made by individuals aged 30 to 59 years.

**Table 1** details the patient group for injury attendances to Leighton ED. The majority of injury attendances were classified as other injury (89%); 5% were recorded as road traffic collisions (RTCs) and assaults accounted for 3% of attendances.

**Table 2** illustrates the source of referral for patients presenting with injuries. The majority (74%) of injury attendees were recorded as self-referred. Referrals made through the emergency services accounted for 12% of attendances.

**Table 3** presents injury attendances by location of incident. One in three attendances were recorded as occurring in the home (33%) and almost three in ten were reported to have occurred in a public place (28%).

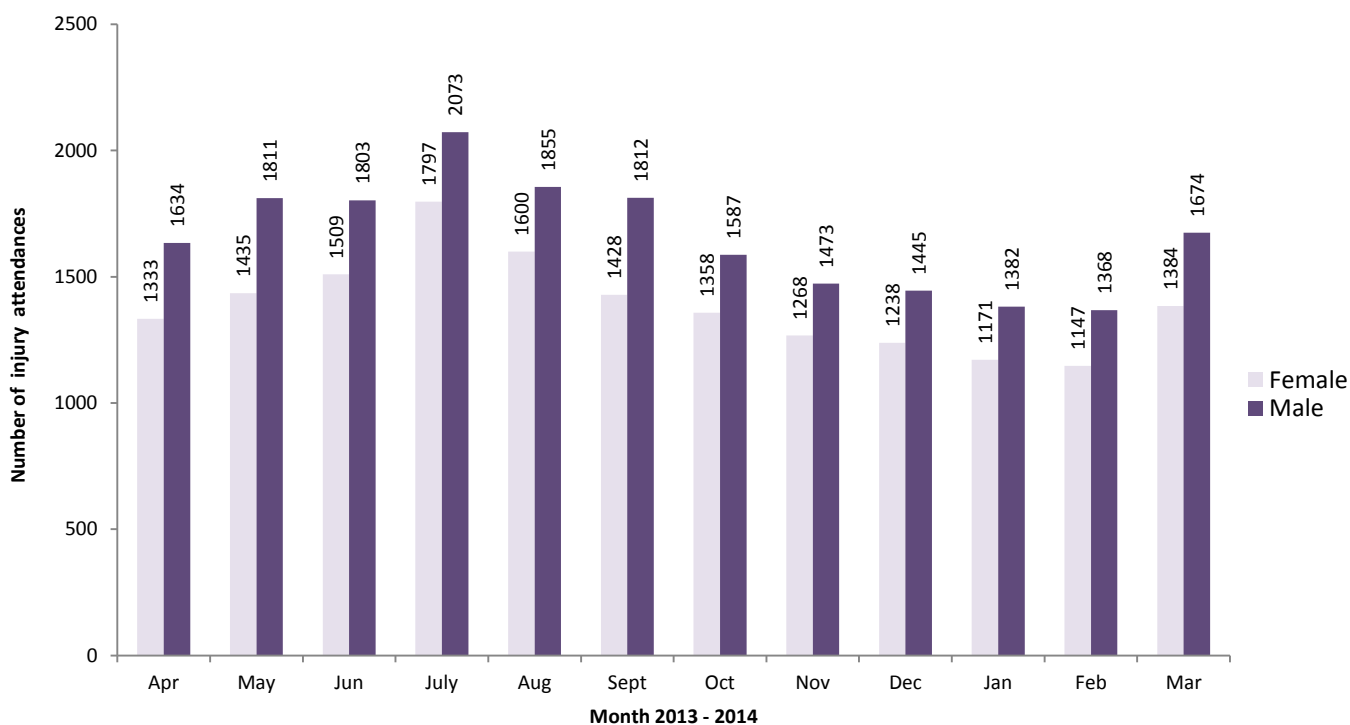
**Table 4** shows the discharge destination of injury attendances. More than two-thirds (68%) of attendees were discharged and 28% were referred.

### Assault Attendances

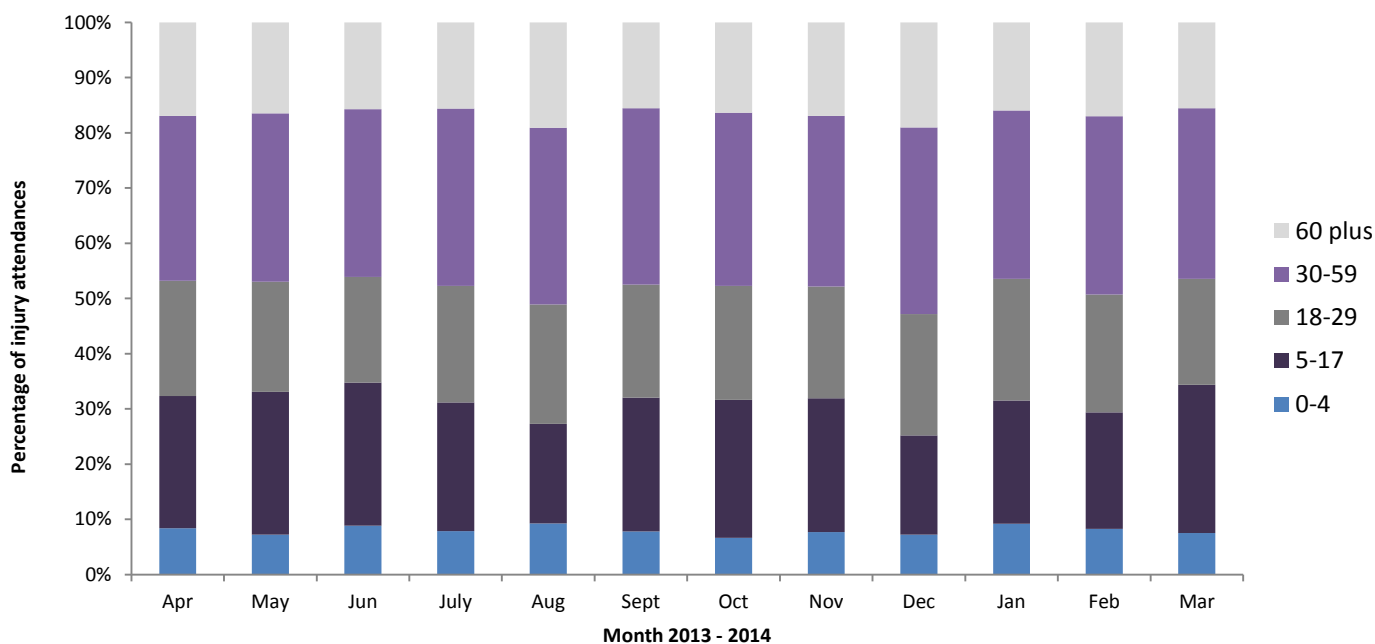
There were 938 assault attendances at Leighton Hospital ED between April 2013 and March 2014. Assault attendees presenting at Leighton Hospital ED were mainly male (72%) and almost half of attendees (47%) were aged between 18 and 29 years.

**Table 5** shows the primary location of assault was in a public place (44%) and over one-fifth (22%) of assaults had occurred in the home.

**Figure 1: Gender of injury attendances by month, April 2013 to March 2014**



**Figure 2: Age group of injury attendances by month, April 2013 to March 2014**



**Table 1: Injury attendances by injury group, April 2013 to March 2014**

Injury group	Apr	May	Jun	July	Aug	Sept	Oct	Nov	Dec	Jan	Feb	Mar	Total	%
Other Injury	2702	2919	2951	3444	3070	2841	2585	2417	2366	2252	2273	2754	32574	89
RTC	104	146	167	176	154	166	203	163	167	165	135	132	1878	5
Assault	72	92	86	86	80	75	83	76	95	64	53	76	938	3
Sports injury	53	57	56	38	36	101	43	61	34	56	35	57	627	2
Bites/stings	36	32	52	126	115	57	31	24	21	16	19	39	568	2
<b>Total</b>	<b>2967</b>	<b>3246</b>	<b>3312</b>	<b>3870</b>	<b>3455</b>	<b>3240</b>	<b>2945</b>	<b>2741</b>	<b>2683</b>	<b>2553</b>	<b>2515</b>	<b>3058</b>	<b>36585</b>	<b>100</b>

**Table 2: Injury attendances by source of referral, April 2013 to March 2014<sup>1</sup>**

Source of referral	Apr	May	Jun	July	Aug	Sept	Oct	Nov	Dec	Jan	Feb	Mar	Total	%
Self-referral	2148	2314	2425	2966	2629	2433	2133	2016	1933	1898	1871	2290	27056	74
Emergency services	315	375	379	414	380	341	361	359	421	289	294	332	4260	12
Other	332	403	320	288	264	252	243	205	163	211	189	262	3132	9
Work	39	30	48	33	40	44	48	52	36	40	36	38	484	1
Educational establishment	29	33	42	33	0	57	58	41	37	39	46	55	470	1
Referred from MIU*	41	40	36	51	49	43	32	24	30	16	19	23	404	1
General practitioner	24	13	20	21	30	24	24	21	24	22	22	19	264	1
Police	12	15	13	9	11	21	18	8	19	16	16	12	170	0
Health care provider	13	9	8	27	28	11	11	5	8	7	9	9	145	0
Unknown	9	<15	10	16	17	8	11	5	6	9	<10	<20	125	0
NHS direct	5	***	<10	<15	7	<10	<10	5	***	<10	***	***	66	0
Local authority social services	0	0	***	***	0	***	***	0	***	***	0	0	9	0
<b>Total</b>	<b>2967</b>	<b>3246</b>	<b>3312</b>	<b>3870</b>	<b>3455</b>	<b>3240</b>	<b>2945</b>	<b>2741</b>	<b>2683</b>	<b>2553</b>	<b>2515</b>	<b>3058</b>	<b>36585</b>	<b>100</b>

\*MIU = Minor Injuries Unit

**Table 3: Injury attendances by incident location, April 2013 to March 2014**

Incident location	Apr	May	Jun	July	Aug	Sept	Oct	Nov	Dec	Jan	Feb	Mar	Total	%
Home	967	1011	1085	1297	1156	1036	917	871	991	884	874	1014	12103	33
Public place	761	907	946	1148	1045	906	871	761	719	635	677	867	10243	28
Unknown	582	579	588	691	621	509	429	414	374	399	334	404	5924	16
Work	211	225	225	267	291	304	265	257	232	228	249	256	3010	8
Other	297	288	242	269	335	229	198	188	205	182	204	223	2860	8
Educational establishment	149	236	226	198	7	256	265	250	162	225	177	294	2445	7
<b>Total</b>	<b>2967</b>	<b>3246</b>	<b>3312</b>	<b>3870</b>	<b>3455</b>	<b>3240</b>	<b>2945</b>	<b>2741</b>	<b>2683</b>	<b>2553</b>	<b>2515</b>	<b>3058</b>	<b>36585</b>	<b>100</b>

**Table 4: Injury attendances by discharge destination, April 2013 to March 2014**

Discharge	Apr	May	Jun	July	Aug	Sept	Oct	Nov	Dec	Jan	Feb	Mar	Total	%
Discharged	1956	2210	2251	2664	2300	2190	1981	1886	1774	1776	1731	2106	24825	68
Referred	877	915	909	1043	994	919	831	757	810	713	689	829	10286	28
Other	72	47	71	89	82	56	63	49	51	40	57	74	751	2
Admitted	62	74	81	74	79	75	70	49	48	24	38	49	723	2
<b>Total</b>	<b>2967</b>	<b>3246</b>	<b>3312</b>	<b>3870</b>	<b>3455</b>	<b>3240</b>	<b>2945</b>	<b>2741</b>	<b>2683</b>	<b>2553</b>	<b>2515</b>	<b>3058</b>	<b>36585</b>	<b>100</b>

**Table 5: Location of assault for assault attendances, April 2013 to March 2014<sup>1</sup>**

Incident location	Apr	May	Jun	July	Aug	Sept	Oct	Nov	Dec	Jan	Feb	Mar	Total	%
Public place	27	40	33	44	37	33	37	33	45	24	27	34	414	44
Home	19	17	21	14	20	18	19	20	20	15	6	22	211	22
Unknown	10	16	19	13	13	12	13	11	16	15	11	8	157	17
Other	<15	<15	7	10	<10	6	7	***	8	***	***	***	80	9
Educational establishment	0	5	***	***	0	6	<10	***	<10	***	***	7	41	4
Work	***	***	***	***	***	0	***	6	***	***	6	***	35	4
<b>Total</b>	<b>72</b>	<b>92</b>	<b>86</b>	<b>86</b>	<b>80</b>	<b>75</b>	<b>83</b>	<b>76</b>	<b>95</b>	<b>64</b>	<b>53</b>	<b>76</b>	<b>938</b>	<b>100</b>

Published May 2014

Stuart Cole (TIIG researcher)

Centre for Public Health, Faculty of Education Health and Community, Liverpool John Moores University

2<sup>nd</sup> Floor, Henry Cotton Campus, 15-21 Webster Street, Liverpool, L3 2ETContact: Jennifer Brizell, Tel: 0151 231 4500, Email: [j.s.brizell@ljmu.ac.uk](mailto:j.s.brizell@ljmu.ac.uk) Website: [www.tiig.info](http://www.tiig.info)

<sup>1</sup> \*\*\* Please note that for all tables, where there are numbers less than five these have been suppressed in line with patient confidentiality and if there is only one number in a category then two numbers will be suppressed at the next level (e.g. <6) in order to prevent back calculations from totals.