

## Macclesfield District General Hospital Emergency Department Monthly Bulletin: October 2010 to September 2011

This bulletin provides a breakdown of all injury attendances at Macclesfield District General Hospital Emergency Department (ED) between October 2010 and September 2011.

Between October 2010 and September 2011 there were 26,453 ED attendances. Injury attendances peaked in July (n=2,587), with February (n=1,866) having the least number of injury attendances (Figure 1).

For most months there were more male injury attendances than female presenting at Macclesfield District General Hospital ED (53%).

Figure 2 presents the age group of injury attendances. Across the whole year, injury attendances were highest for individuals aged 30-59 years (35%).

Table 1 details the injury group of injury attendances. The majority of injury attendances were classified as other injury (85%) and 7% were recorded as sports.

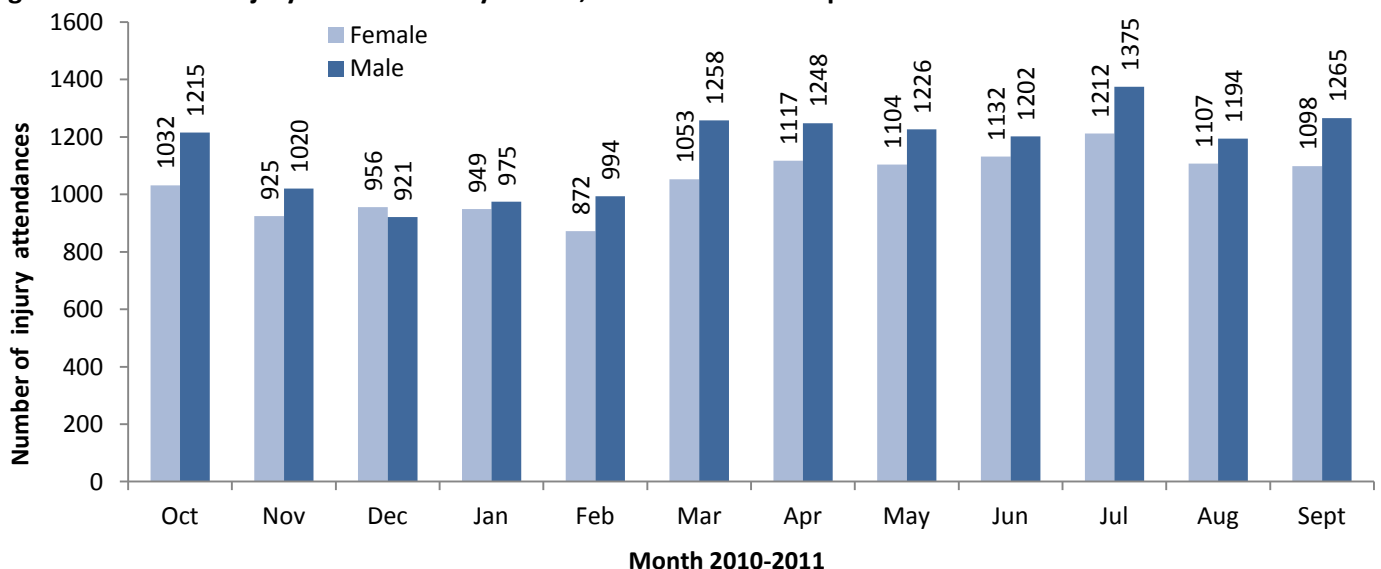
Table 2 illustrates the source of referral for patients presenting with injuries. The majority (74%) of injury attendees self-referred.

Table 3 presents injury attendances by location of incident. Nearly half (47%) of all injury locations were recorded as other and 25% recorded as public place.

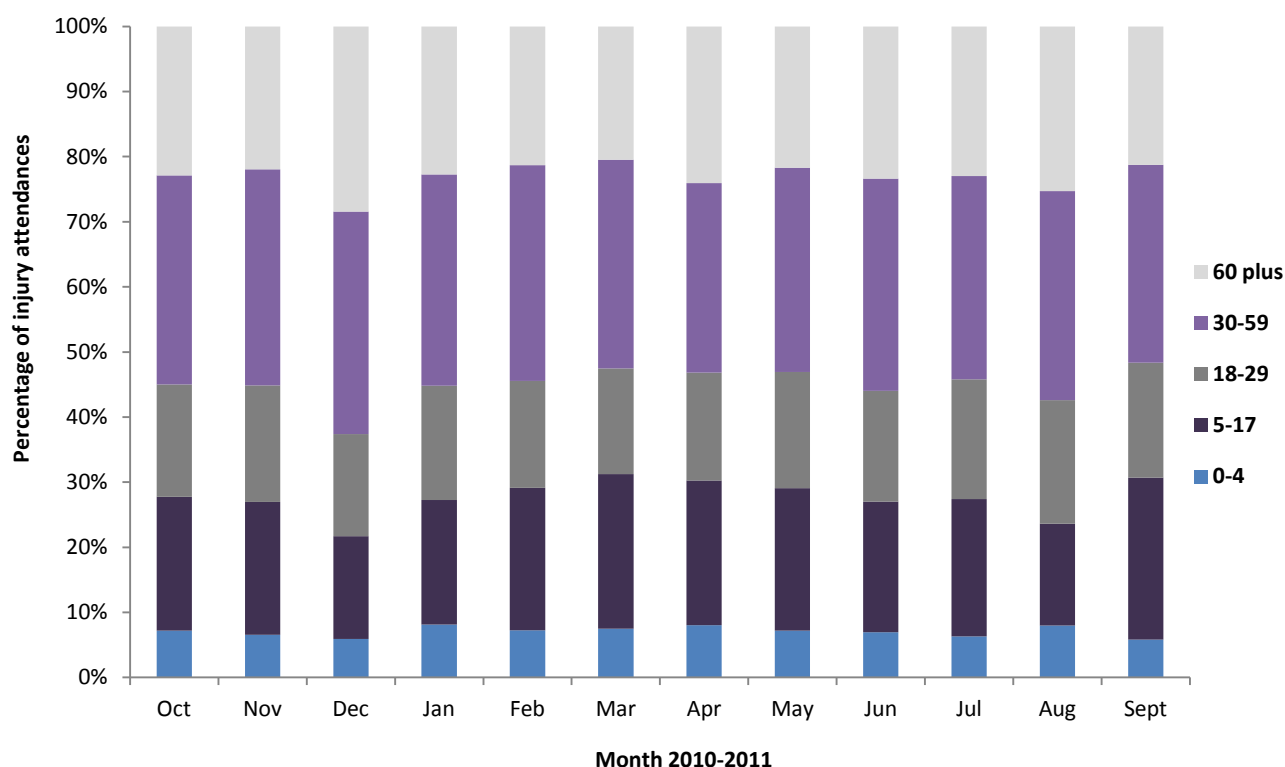
Table 4 shows the discharge destination of injury attendances. Almost four in ten (37%) attendees were discharged without requiring any follow-up, whilst one in five were discharged requiring follow-up treatment.

Assault attendees presenting at Macclesfield District General Hospital ED between October 2010 and September 2011 were mainly male (64%) and over four in ten (41%) were aged between 18 and 29 years of age. Table 5 shows the primary location of assault was recorded as other (55%). A third (33%) of assaults were recorded as occurring in a public place.

Figure 1: Gender of injury attendances by month, October 2010 to September 2011



**Figure 2: Age group of injury attendances by month, October 2010 to September 2011**



**Table 1: Injury attendances by injury group, October 2010 to September 2011<sup>1\*</sup>**

Injury group	Oct	Nov	Dec	Jan	Feb	Mar	Apr	May	Jun	Jul	Aug	Sept	Total	%
Other injury	1882	1617	1681	1654	1572	1906	2018	2009	2006	2204	1999	2029	22577	85
Sports injury	168	143	57	111	146	211	190	151	136	182	121	171	1787	7
RTC	93	82	57	62	48	70	53	81	76	66	97	68	853	3
Deliberate self-harm	48	54	38	50	54	54	42	44	60	60	41	57	602	2
Assault	49	36	36	42	<43	64	52	39	<55	65	<40	<38	555	2
Firework injury	7	13	8	5	***	6	12	6	***	10	***	***	79	0
<b>Total</b>	<b>2247</b>	<b>1945</b>	<b>1877</b>	<b>1924</b>	<b>1866</b>	<b>2311</b>	<b>2367</b>	<b>2330</b>	<b>2335</b>	<b>2587</b>	<b>2301</b>	<b>2363</b>	<b>26453</b>	<b>100</b>

\*Due to rounding, percentages may not add up to 100.

**Table 2: Injury attendances by source of referral, October 2010 to September 2011<sup>\*</sup>**

Source of referral	Oct	Nov	Dec	Jan	Feb	Mar	Apr	May	Jun	Jul	Aug	Sept	Total	%
Self referral	1710	1484	1432	1481	1368	1710	1749	1732	1706	1869	1617	1786	19644	74
Other	287	208	257	219	282	288	334	322	366	413	402	345	3723	14
Health care provider	173	168	116	129	151	215	207	199	176	223	212	149	2118	8
General medical practitioner	47	58	52	66	41	58	51	46	42	48	48	57	614	2
Police	13	11	8	17	14	20	12	12	25	19	17	15	183	1
Educational establishment	10	12	7	11	6	16	***	9	10	5	***	7	97	0
Work	7	***	***	***	***	***	8	8	9	10	5	***	67	0
General dental practitioner	***	***	***	***	***	***	***	***	***	***	***	***	***	0
Local authority social services	***	***	***	***	***	***	***	***	***	***	***	***	***	0
Unknown	***	***	***	***	***	***	***	***	***	***	***	***	***	0
<b>Total</b>	<b>2247</b>	<b>1945</b>	<b>1877</b>	<b>1924</b>	<b>1866</b>	<b>2311</b>	<b>2367</b>	<b>2330</b>	<b>2335</b>	<b>2587</b>	<b>2301</b>	<b>2363</b>	<b>26453</b>	<b>100</b>

\*Due to rounding, percentages may not add up to 100.

<sup>1</sup> \*\*\* Please note that all numbers less than five have been suppressed in line with patient confidentiality and if there is only one number in a category then two numbers will be suppressed at the next level (e.g. <6) in order to prevent back calculations from totals.

**Table 3: Injury attendances by location of incident, October 2010 to September 2011**

Incident location	Oct	Nov	Dec	Jan	Feb	Mar	Apr	May	Jun	Jul	Aug	Sept	Total	%
Other	1016	939	1037	979	843	1029	1143	1058	1158	1236	1000	1100	12538	47
Public place	600	434	398	433	476	595	591	591	510	637	678	638	6581	25
Home	379	341	310	340	338	434	449	449	446	510	501	393	4890	18
Work	172	128	77	88	111	136	114	120	137	132	119	126	1460	6
Educational establishment	<81	<104	<56	<85	<99	<118	<69	<113	<84	<72	<120	<107	<982	4
Unknown	***	***	***	***	***	***	***	***	***	***	***	***	***	0
<b>Total</b>	<b>2247</b>	<b>1945</b>	<b>1877</b>	<b>1924</b>	<b>1866</b>	<b>2311</b>	<b>2367</b>	<b>2330</b>	<b>2335</b>	<b>2587</b>	<b>2301</b>	<b>2363</b>	<b>26453</b>	<b>100</b>

**Table 4: Injury attendances by discharge destination, October 2010 to September 2011\*<sup>2</sup>**

Discharge	Oct	Nov	Dec	Jan	Feb	Mar	Apr	May	Jun	Jul	Aug	Sept	Total	%
Discharged - did not require any follow-up treatment	846	716	645	679	687	839	801	858	871	965	869	930	9706	37
Discharged – follow-up treatment by GP	438	382	341	347	356	432	497	460	472	521	523	462	5231	20
Admitted to a hospital bed	277	255	296	287	231	297	331	270	252	301	237	257	3291	12
Referred to fracture clinic	211	169	221	182	165	240	242	271	256	263	237	267	2724	10
Referred to ED Clinic	242	193	178	219	226	255	237	229	236	241	214	196	2666	10
Referred to other out-patient clinic	138	134	112	115	116	138	130	131	134	143	140	120	1551	6
Left department before being treated	31	26	18	41	26	35	41	40	46	59	22	39	424	2
Other	30	36	29	20	28	33	36	28	19	30	18	32	339	0
Referred to other HCP	18	14	27	18	17	16	24	15	23	29	16	37	254	1
Transferred to other HCP	10	15	5	11	11	17	19	16	13	19	16	13	165	1
Left department having refused treatment	<10	***	<10	***	***	<10	<10	<15	<15	<20	<10	<10	<100	0
Died in department	***	***	***	***	***	***	***	***	***	***	***	***	7	0
<b>Total</b>	<b>2247</b>	<b>1945</b>	<b>1877</b>	<b>1924</b>	<b>1866</b>	<b>2311</b>	<b>2367</b>	<b>2330</b>	<b>2335</b>	<b>2587</b>	<b>2301</b>	<b>2363</b>	<b>26453</b>	<b>100</b>

\*Due to rounding, percentages may not add up to 100.

**Table 5: Location of assault for assault attendances, October 2010 to September 2011**

Incident Location	Oct	Nov	Dec	Jan	Feb	Mar	Apr	May	Jun	Jul	Aug	Sept	Oct	%
Other	28	20	24	17	28	29	36	18	33	33	19	18	303	55
Public place	14	10	7	22	10	20	12	15	15	28	16	16	185	33
Work	5	***	***	***	***	10	***	***	***	***	***	***	32	6
Home	***	***	***	***	***	***	***	***	***	***	***	***	19	3
Educational establishment	***	***	***	***	***	***	***	***	***	***	***	***	16	3
<b>Total</b>	<b>49</b>	<b>36</b>	<b>36</b>	<b>42</b>	<b>&lt;43</b>	<b>64</b>	<b>52</b>	<b>39</b>	<b>&lt;55</b>	<b>65</b>	<b>&lt;40</b>	<b>&lt;38</b>	<b>555</b>	<b>100</b>

Published November 2011

Nicola Davenport (Merseyside and Cheshire TIIG officer)

Centre for Public Health, Faculty of Health and Applied Social Sciences, Liverpool John Moores University

2<sup>nd</sup> Floor, Henry Cotton Campus, 15-21 Webster Street, Liverpool, L3 2ET

Tel: 0151 231 4500 Email: [N.M.Davenport@ljmu.ac.uk](mailto:N.M.Davenport@ljmu.ac.uk)

Website: [www.tiig.info](http://www.tiig.info) (please note all data requests should be made through the TIIG website)

<sup>2</sup> GP-General practitioner, HCP – Health care provider