

## Macclesfield District General Hospital Emergency Department Monthly Bulletin: January to December 2011

This bulletin provides a breakdown of all injury attendances at Macclesfield District General Hospital Emergency Department (ED) between January and December 2011.

Between January and December 2011 there were 26,151 ED attendances. Injury attendances peaked in July (n=2,587), with December (n=1,729) having the least number of injury attendances (**Figure 1**).

For most months there were slightly more male injury attendances than female presenting at Macclesfield District General Hospital ED (52%).

**Figure 2** presents the age group of injury attendances. Across the whole year, injury attendances were highest for individuals aged 30-59 years (32%).

**Table 1** details the injury group of injury attendances. The majority of injury attendances were classified as other injury (85%) and 7% were recorded as sports injury.

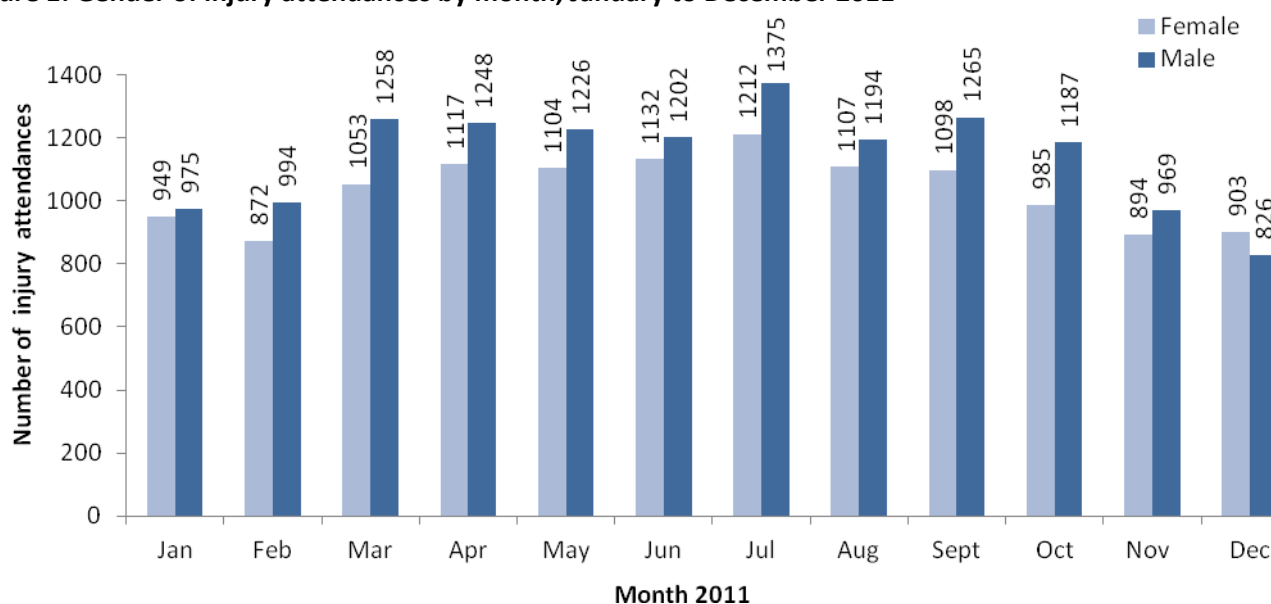
**Table 2** illustrates the source of referral for patients presenting with injuries. The majority (74%) of injury attendees self-referred.

**Table 3** presents injury attendances by location of incident. Nearly half (47%) of all injury locations were recorded as other and 25% recorded as public place.

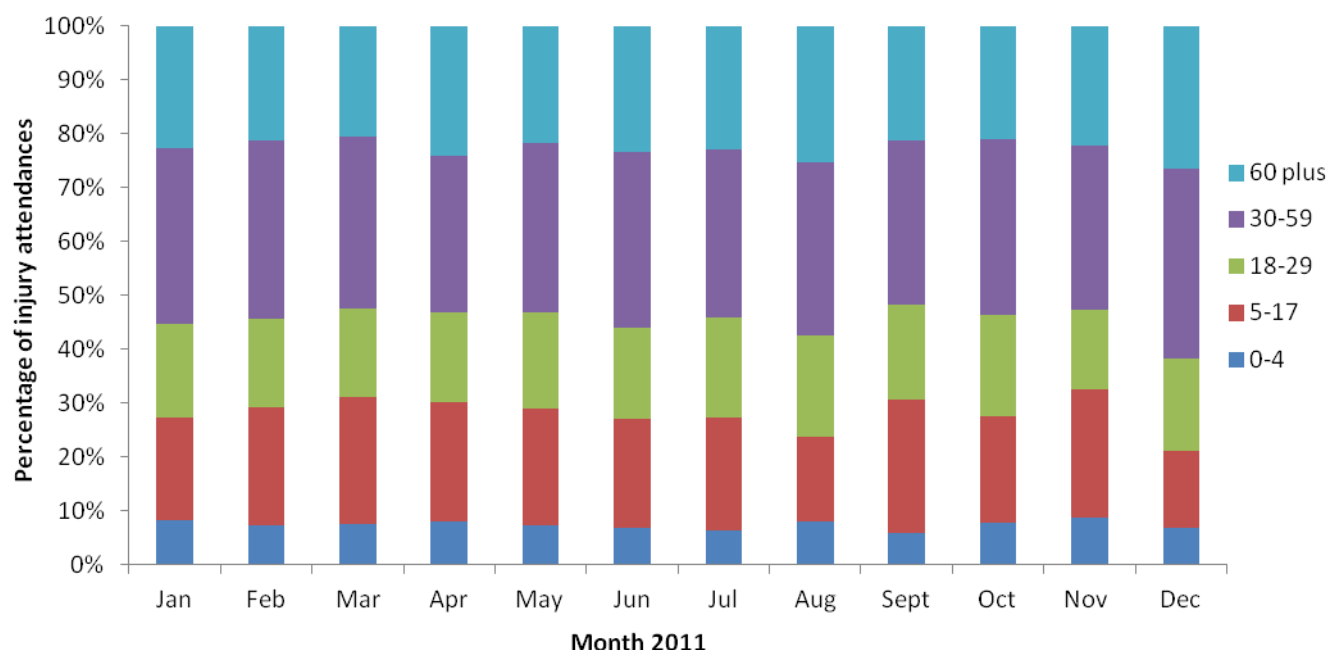
**Table 4** shows the discharge destination of injury attendances. Almost four in ten (37%) attendees were discharged without requiring any follow-up; whilst one in five (20%) were discharged requiring follow-up treatment.

Assault attendees presenting at Macclesfield District General Hospital ED between January and December 2011 were mainly male (71%) and over four in ten (43%) were aged between 18 and 29 years of age. **Table 5** shows the primary location of assault was recorded as other (51%). Over a third (36%) of assaults were recorded as occurring in a public place.

**Figure 1: Gender of injury attendances by month, January to December 2011**



**Figure 2: Age group of injury attendances by month, January to December 2011**



**Table 1: Injury attendances by injury group, January to December 2011<sup>1\*</sup>**

Injury group	Jan	Feb	Mar	Apr	May	Jun	Jul	Aug	Sept	Oct	Nov	Dec	Total	%
Other injury	1654	1572	1906	2018	2009	2006	2204	1999	2029	1806	1581	1495	22279	85
Sports injury	111	146	211	190	151	136	182	121	171	165	136	71	1791	7
RTC	62	48	70	53	81	76	66	97	68	91	57	57	826	3
Deliberate self-harm	50	54	54	42	44	60	60	41	57	<47	51	<48	606	2
Assault	42	<43	64	52	39	<55	65	<40	37	62	<39	59	595	2
Firework injury	5	***	6	12	6	***	10	***	***	***	***	***	54	0
<b>Total</b>	<b>1924</b>	<b>1866</b>	<b>2311</b>	<b>2367</b>	<b>2330</b>	<b>2335</b>	<b>2587</b>	<b>2301</b>	<b>2363</b>	<b>2172</b>	<b>1866</b>	<b>1729</b>	<b>26151</b>	<b>100</b>

\*Due to rounding, percentages may not add up to 100.

**Table 2: Injury attendances by source of referral, January to December 2011<sup>1\*</sup>**

Source of referral	Jan	Feb	Mar	Apr	May	Jun	Jul	Aug	Sept	Oct	Nov	Dec	Total	%
Self referral	1481	1368	1710	1749	1732	1706	1869	1617	1786	1627	1448	1280	19373	74
Other	219	282	288	334	322	366	413	402	345	338	245	331	3885	15
Health care provider	129	151	215	207	199	176	223	212	149	147	124	62	1994	8
General medical practitioner	66	41	58	51	46	42	48	48	57	39	30	36	562	2
Police	17	14	20	12	12	25	19	17	15	10	5	15	181	1
Educational establishment	11	6	16	***	9	10	5	***	7	***	5	***	77	0
Work	***	***	***	8	8	9	10	5	***	7	6	5	70	0
Unknown	***	***	***	***	***	***	***	***	***	***	***	***	6	0
General dental practitioner	***	***	***	***	***	***	***	***	***	***	***	***	***	0
Local authority social services	***	***	***	***	***	***	***	***	***	***	***	***	***	0
<b>Total</b>	<b>1924</b>	<b>1866</b>	<b>2311</b>	<b>2367</b>	<b>2330</b>	<b>2335</b>	<b>2587</b>	<b>2301</b>	<b>2363</b>	<b>2172</b>	<b>1866</b>	<b>1729</b>	<b>26151</b>	<b>100</b>

\*Due to rounding, percentages may not add up to 100.

<sup>1</sup> Please note that all numbers less than five have been suppressed in line with patient confidentiality and if there is only one number in a category then two numbers will be suppressed at the next level (e.g. <6) in order to prevent back calculations from totals.

**Table 3: Injury attendances by incident location, January to December 2011**

Incident location	Jan	Feb	Mar	Apr	May	Jun	Jul	Aug	Sept	Oct	Nov	Dec	Total	%
Other	979	843	1029	1143	1058	1158	1236	1000	1100	956	892	872	12266	47
Public Place	433	476	595	591	591	510	637	678	638	637	427	364	6577	25
Home	340	338	434	449	449	446	510	501	393	393	363	347	4963	19
Work	88	111	136	114	120	137	132	119	126	113	85	94	1375	5
Educational establishment	84	98	117	68	112	83	72	***	106	73	96	52	964	4
Unknown	***	***	***	***	***	***	***	***	***	***	***	***	6	0
<b>Total</b>	<b>1924</b>	<b>1866</b>	<b>2311</b>	<b>2367</b>	<b>2330</b>	<b>2335</b>	<b>2587</b>	<b>2301</b>	<b>2363</b>	<b>2172</b>	<b>1866</b>	<b>1729</b>	<b>26151</b>	<b>100</b>

**Table 4: Injury attendances by discharge destination, January to December 2011\*2\*\***

Discharge destination	Jan	Feb	Mar	Apr	May	Jun	Jul	Aug	Sept	Oct	Nov	Dec	Total	%
Discharged - did not require any follow up treatment	679	687	839	801	858	871	965	869	930	839	657	622	9617	37
Discharged - follow up treatment by GP	347	356	432	497	460	472	521	523	462	458	405	387	5320	20
Admitted to a hospital bed	287	231	297	331	270	252	301	237	257	188	198	239	3088	12
Referred to fracture clinic	182	165	240	242	271	256	263	237	267	222	207	166	2718	10
Referred to ED Clinic	219	226	255	237	229	236	241	214	196	206	195	127	2581	10
Referred to other out-patient clinic	115	116	138	130	131	134	143	140	120	126	98	97	1488	6
Left department before being treated	41	26	35	41	40	46	59	22	39	49	39	23	460	2
Other	20	28	33	36	28	19	30	18	32	30	21	20	315	0
Referred to other HCP	18	17	16	24	15	23	29	16	37	27	25	<13	259	1
Transferred to other HCP	11	11	17	19	16	<14	19	16	13	19	10	24	188	1
Left department having refused treatment	***	***	<9	<10	<12	<14	<17	<10	<10	<9	<8	<13	109	0
Died in department	***	***	***	***	***	***	***	***	***	***	***	***	5	0
<b>Total</b>	<b>1924</b>	<b>1866</b>	<b>2311</b>	<b>2367</b>	<b>2330</b>	<b>2335</b>	<b>2587</b>	<b>2301</b>	<b>2363</b>	<b>2172</b>	<b>1866</b>	<b>1729</b>	<b>26151</b>	<b>100</b>

\*Due to rounding, percentages may not add up to 100.

\*\* Please note there were 3 unknown cases in November.

**Table 5: Location of assault for assault attendances, January to December 2011**

Incident location	Apr	May	Jun	Jul	Aug	Sep	Oct	Nov	Dec	Jan	Feb	Mar	Total	%
Other	17	28	29	36	18	33	33	19	18	26	16	33	306	51
Public place	22	10	20	12	15	15	28	16	16	25	20	16	215	36
Home	***	***	***	***	***	***	***	***	***	8	***	6	29	5
Work	***	***	10	***	***	***	***	***	***	***	***	***	30	5
Educational establishment	***	***	***	***	***	***	***	***	***	***	***	***	15	3
Unknown	***	***	***	***	***	***	***	***	***	***	***	***	***	0
<b>Total</b>	<b>42</b>	<b>42</b>	<b>64</b>	<b>52</b>	<b>39</b>	<b>54</b>	<b>65</b>	<b>39</b>	<b>37</b>	<b>62</b>	<b>40</b>	<b>59</b>	<b>595</b>	<b>100</b>

Published March 2012

Nicola Davenport (Merseyside and Cheshire TIIG officer)

Centre for Public Health, Faculty of Health and Applied Social Sciences, Liverpool John Moores University

2<sup>nd</sup> Floor, Henry Cotton Campus, 15-21 Webster Street, Liverpool, L3 2ET

Tel: 0151 231 4500 Email: [N.M.Davenport@ljmu.ac.uk](mailto:N.M.Davenport@ljmu.ac.uk)

Website: [www.tiig.info](http://www.tiig.info)

<sup>2</sup> GP-General practitioner, HCP – Health care provider