

TIIG

INJURY SURVEILLANCE IN THE NORTH WEST OF ENGLAND

Macclesfield District General Hospital Emergency Department Monthly Bulletin: January to December 2012

This bulletin provides a breakdown of all injury attendances at Macclesfield District General Hospital Emergency Department (ED) between January and December 2012.

Between January and December 2012 there were 23,772 ED attendances. Injury attendances peaked in May (n=2,248), with February (n=1,637) having the least number of injury attendances (**Figure 1**).

There were slightly more male injury attendances than female presenting at Macclesfield District General Hospital ED (52%).

Figure 2 presents the age group of injury attendances. Across the whole year, injury attendances were highest for individuals aged 30-59 years (32%).

Table 1 details the injury group of injury attendances. The majority of injury attendances were classified as other injury (85%) and 7% were recorded as sports injury.

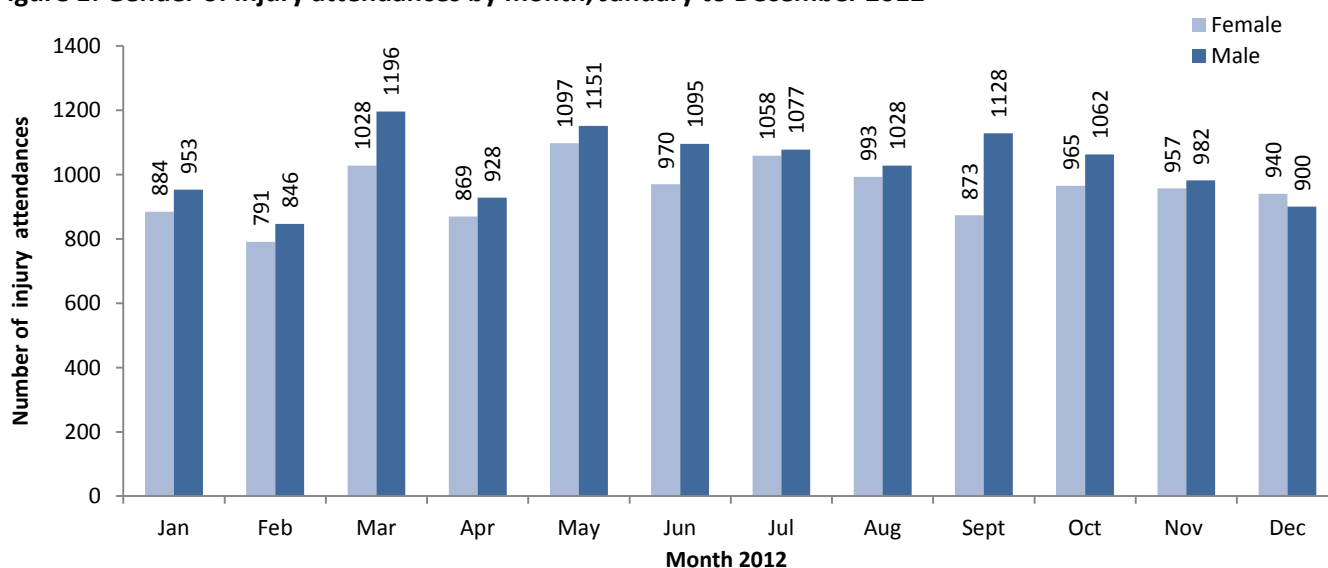
Table 2 illustrates the source of referral for patients presenting with injuries. The majority (78%) of injury attendees self-referred.

Table 3 presents injury attendances by location of incident. Over half (51%) of all injury locations were recorded as other and 22% recorded as public place.

Table 4 shows the discharge destination of injury attendances. Over a third (35%) attendees were discharged without requiring any follow-up; whilst over one in five (22%) were discharged requiring follow-up treatment.

Assault attendees presenting at Macclesfield District General Hospital ED between January and December 2012 were mainly male (67%) and over four in ten (43%) were aged between 18 and 29 years of age. **Table 5** shows the primary location of assault was recorded as other (49%). Over a third (34%) of assaults were recorded as occurring in a public place.

Figure 1: Gender of injury attendances by month, January to December 2012¹



¹ There was 1 attendance where gender was recorded as unknown

Figure 2: Age group of injury attendances by month, January to December 2012

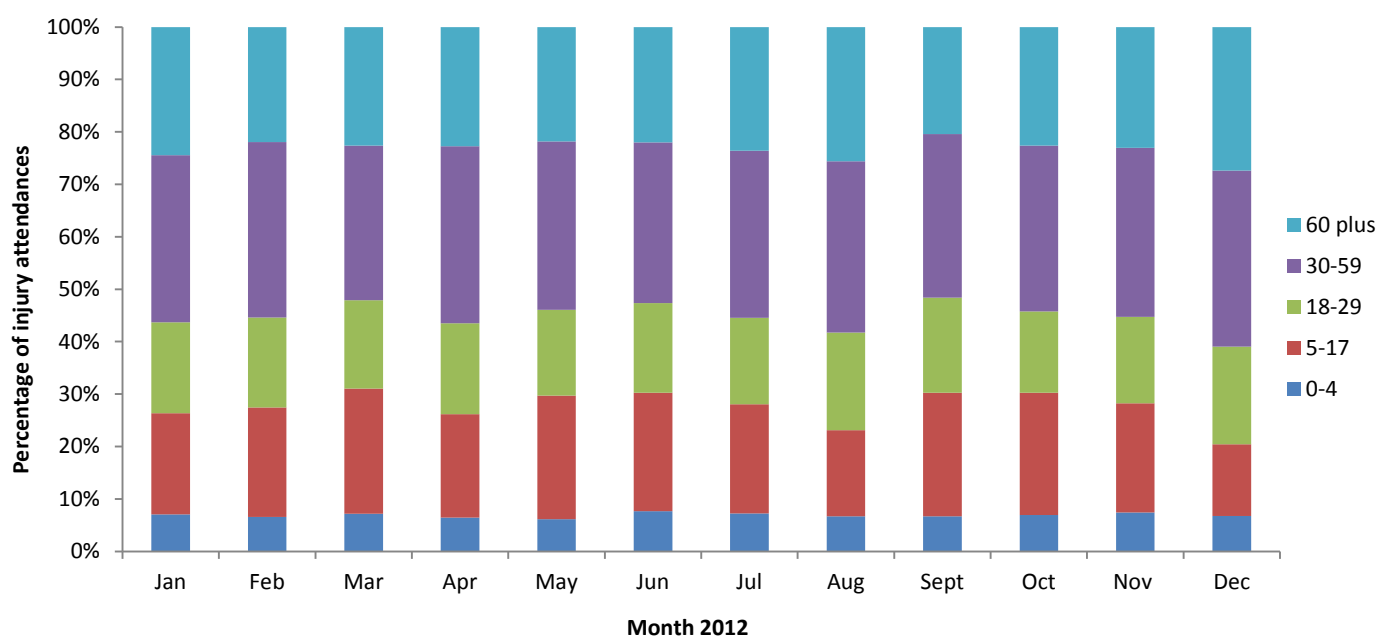


Table 1: Injury attendances by injury group, January to December 2012¹

Injury group	Jan	Feb	Mar	Apr	May	Jun	Jul	Aug	Sept	Oct	Nov	Dec	Total	%
Other injury	1585	1419	1882	1522	1914	1766	1830	1789	1700	1682	1628	1598	20313	85
Sports injury	108	113	184	145	155	128	151	83	147	198	149	83	1644	7
Road traffic collision	49	33	59	56	71	62	68	35	53	45	60	46	637	3
Assault	42	31	51	38	55	48	35	59	46	64	57	69	595	3
Deliberate self-harm	53	41	49	36	53	61	51	55	55	38	45	44	581	2
Total	1837	1637	2225	1797	2248	2065	2135	2021	2001	2027	1939	1840	23772	100

¹ Due to small numbers firework injury (n=2) has been included in the other injury group.

Table 2: Injury attendances by source of referral, January to December 2012²

Source of referral	Jan	Feb	Mar	Apr	May	Jun	Jul	Aug	Sept	Oct	Nov	Dec	Total	%
Self-referral	1405	1255	1755	1361	1807	1639	1614	1594	1575	1531	1494	1435	18465	78
Other	289	236	288	229	215	167	245	168	167	207	230	204	2645	11
Health care provider	100	105	122	137	140	180	182	180	151	179	130	126	1732	7
General medical practitioner	28	29	30	46	38	35	47	48	62	48	40	50	501	2
Police	<9	***	15	11	15	18	10	15	17	16	14	9	152	1
Educational establishment	***	***	11	***	19	11	20	***	19	26	18	5	140	1
Work	***	5	***	9	12	13	15	14	10	20	13	11	129	1
Local authority social services	***	***	***	***	***	***	***	***	***	***	***	***	<7	0
General dental practitioner	***	***	***	***	***	***	***	***	***	***	***	***	***	0
Total	1837	1637	2225	1797	2248	2065	2135	2021	2001	2027	1939	1840	23772	100

Table 3: Injury attendances by incident location, January to December 2012²

Incident location	Jan	Feb	Mar	Apr	May	Jun	Jul	Aug	Sept	Oct	Nov	Dec	Total	%
Other	933	880	1162	933	1064	983	1098	1101	966	1023	953	946	12042	51
Public place	374	336	479	410	524	485	502	433	528	477	435	361	5344	22
Home	330	274	361	342	442	424	363	380	348	321	340	373	4298	18
Work	109	79	115	<75	117	108	94	<110	80	104	127	97	1209	5
Educational establishment	91	68	108	<40	101	65	78	***	79	102	84	63	879	4
Total	1837	1637	2225	1797	2248	2065	2135	2021	2001	2027	1939	1840	23772	100

² Please note that for all tables, all numbers less than five have been suppressed in line with patient confidentiality and if there is only one number in a category then two numbers will be suppressed at the next level (e.g. <6) in order to prevent back calculations from totals.

Table 4: Injury attendances by discharge destination, January to December 2012*²

Discharge destination	Jan	Feb	Mar	Apr	May	Jun	Jul	Aug	Sept	Oct	Nov	Dec	Total	%
Discharged - did not require any follow up treatment	700	586	772	609	807	709	756	637	652	707	680	591	8206	35
Discharged - follow up treatment by GP	368	354	515	440	497	439	458	452	437	445	403	392	5200	22
Referred to fracture clinic	206	208	279	196	260	249	245	255	230	236	205	240	2809	12
Referred to ED Clinic	165	192	238	178	261	240	206	213	233	211	218	177	2532	11
Admitted to a hospital bed	207	148	210	198	229	185	209	199	229	207	217	236	2474	10
Referred to other out-patient clinic	88	59	98	81	105	107	109	110	84	98	96	88	1123	5
Left department before being treated	33	31	39	35	30	47	45	47	55	26	26	31	445	2
Other	21	20	28	27	25	32	51	63	38	52	50	31	438	0
Referred to other HCP	15	14	24	18	9	32	24	20	14	14	16	25	225	1
Transferred to other HCP	21	16	13	10	19	17	18	17	19	19	15	21	205	1
Left department having refused treatment	<15	<10	<10	<10	<10	<10	<15	<10	<15	<15	<15	<10	108	0
Died in department	***	***	***	***	***	***	***	***	***	***	***	***	7	0
Total	1837	1637	2225	1797	2248	2065	2135	2021	2001	2027	1939	1840	23772	100

*HCP – Health care provider, GP – General practitioner

Table 5: Location of assault for assault attendances, January to December 2012²

Incident location	Jan	Feb	Mar	Apr	May	Jun	Jul	Aug	Sept	Oct	Nov	Dec	Total	%
Other	20	19	25	20	23	20	18	35	23	26	24	36	289	49
Public place	13	7	17	14	24	21	9	17	17	25	17	22	203	34
Home	***	***	***	***	***	***	***	***	***	7	6	7	43	7
Work	***	***	6	***	***	***	5	***	***	***	<9	***	41	7
Educational establishment	***	***	***	***	***	***	***	***	***	<6	***	***	19	3
Total	42	31	51	38	55	48	35	59	46	64	57	69	595	100

Published July 2013

Jennifer Brizell (TIIG researcher)

Centre for Public Health, Faculty of Health and Applied Social Sciences, Liverpool John Moores University
2nd Floor, Henry Cotton Campus, 15-21 Webster Street, Liverpool, L3 2ET

Tel: 0151 231 4500 Email: j.s.brizell@ljmu.ac.uk

Website: www.tiig.info (please note all data requests should be made through the TIIG website)

² Please note that for all tables, all numbers less than five have been suppressed in line with patient confidentiality and if there is only one number in a category then two numbers will be suppressed at the next level (e.g. <6) in order to prevent back calculations from totals.