



TIIG
INJURY SURVEILLANCE IN THE NORTH WEST OF ENGLAND

WARRINGTON HOSPITAL EMERGENCY DEPARTMENT

MONTHLY BULLETIN: OCTOBER 2013 TO SEPTEMBER 2014

This bulletin provides a breakdown of all injury attendances to Warrington Hospital Emergency Department (ED) between October 2013 and September 2014.

Over the twelve month period there were 37,841 ED attendances. Note that this report is inclusive of data from Halton Minor Injuries Unit (MIU; n=12,214).

The month with the highest number of attendances, calculated as a daily average, was July 2014 (118 per day) compared to August 2014, the month with the fewest (79 per day; **Figure 1**).

There were slightly more male (53%) injury attendances than female presenting to Warrington Hospital ED (**Figure 1**). **Figure 2** presents the age group of injury attendances. Injury attendances were highest for those aged between 30 and 59 years (33%), followed by those aged between 15 and 29 years (24%).

Table 1 details the injury group for attendances. The majority (78%) of attendances were classified as other injury. Sports injury accounted for 9% of attendances followed by road traffic collisions (RTCs; 7%).

Table 2 illustrates the source of referral for patients presenting with injuries. The majority (92%) of injury attendees self-referred.

Table 3 presents injury attendances by incident location. Close to a third (32%) of attendances occurred at home and 11% occurred in a public place.

Table 4 shows the discharge destination of injury attendances. Forty-three per cent were discharged with no follow-up treatment required and 18% were discharged with follow-up treatment to be provided by a General Practitioner (GP). Thirteen per cent were referred to the fracture clinic and 12% were admitted to hospital.

Assault attendances

There were 1,259 assault attendances to Warrington Hospital ED between October 2013 and September 2014.

The majority (72%) of assault attendees were male (72%) and close to half (49%) were aged between 15 and 29 years.

Table 5 shows that 22% of assaults each occurred in a public place and in the home.

Figure 1: ED injury attendances by gender and month, October 2013 to September 2014

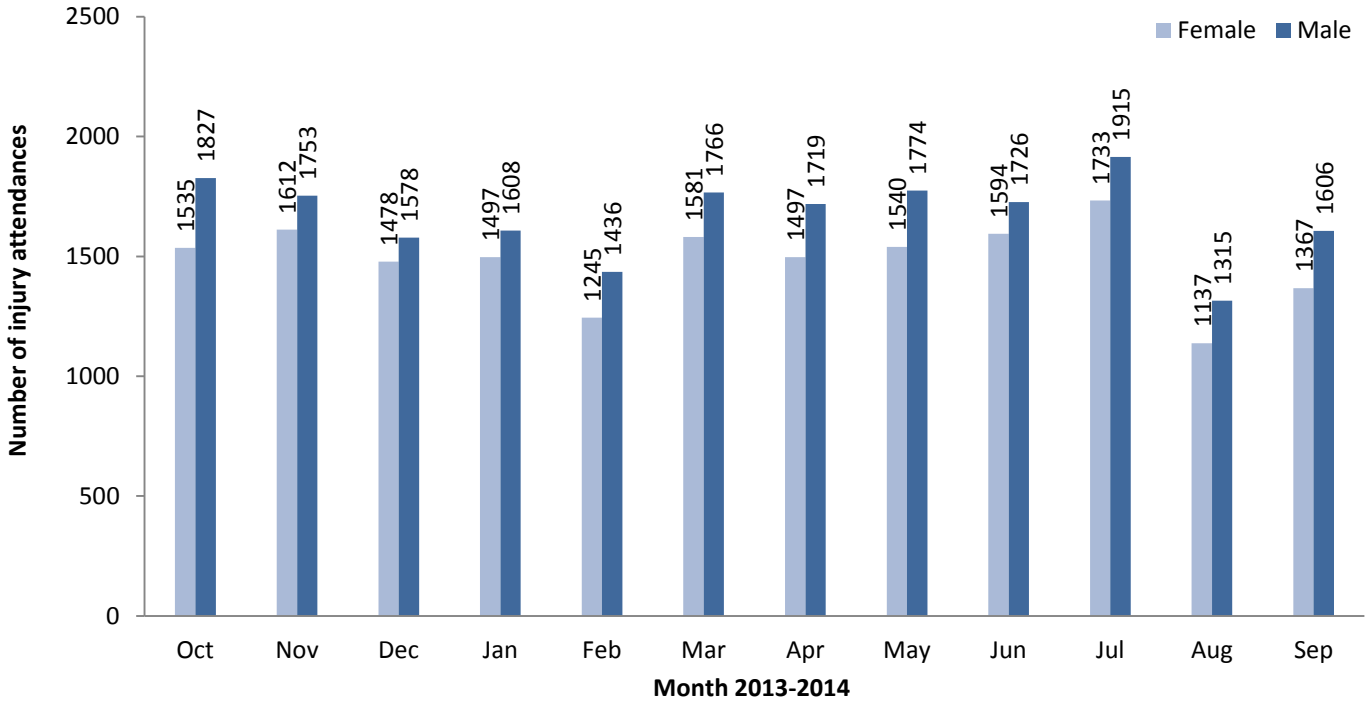


Figure 2: ED injury attendances by age group and month, October 2013 to September 2014

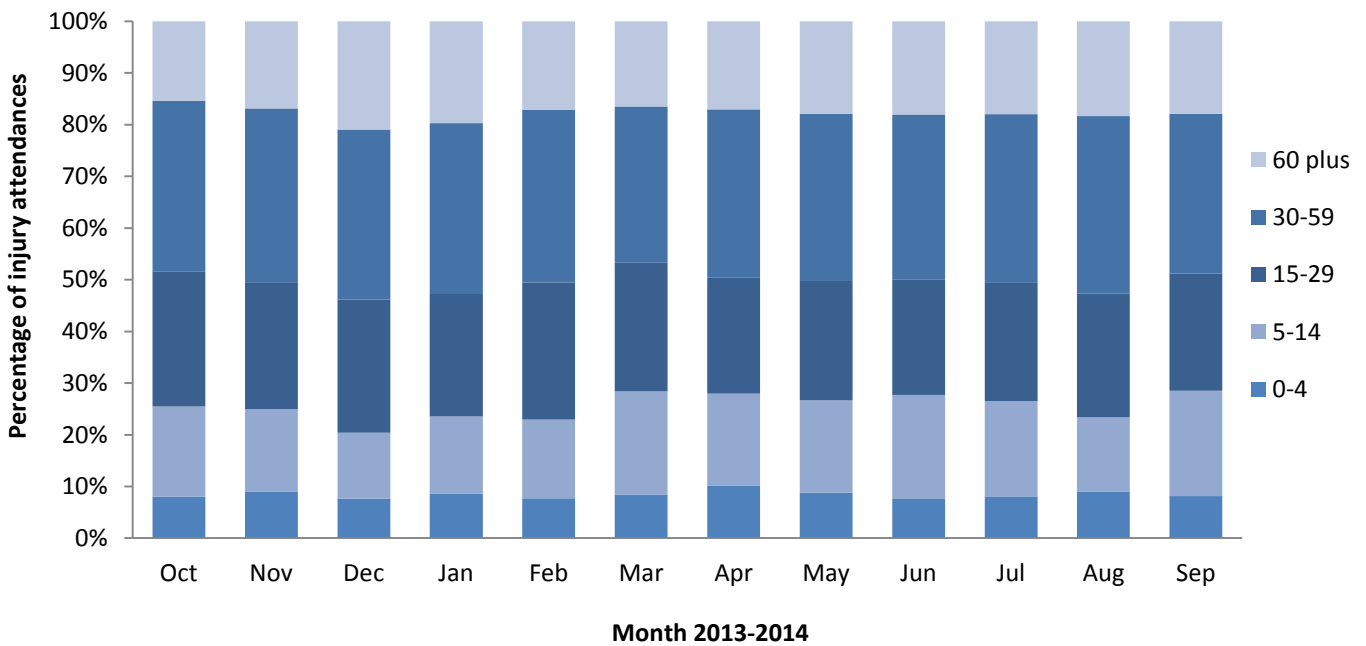


Table 1: ED injury attendances by injury group and month, October 2013 to September 2014[^]

Injury group	Oct	Nov	Dec	Jan	Feb	Mar	Apr	May	Jun	Jul	Aug	Sep	Total	%
Other injury	2642	2627	2448	2440	2060	2563	2528	2631	2628	2913	1922	2257	29659	78%
Sports injury	296	249	188	221	248	390	312	302	322	322	206	346	3402	9%
Road traffic collision	233	260	203	226	196	217	214	201	211	218	179	181	2539	7%
Assault	120	129	151	122	96	85	98	82	90	103	74	109	1259	3%
Deliberate self-harm	71	100	66	96	81	92	64	98	70	92	71	81	982	3%
Total	3362	3365	3056	3105	2681	3347	3216	3314	3321	3648	2452	2974	37841	100%

[^] Due to low numbers, firework injuries have been included in the 'other' injury category (n=10).

Table 2: ED injury attendances by source of referral and month, October 2013 to September 2014^{†1}

Source of referral	Oct	Nov	Dec	Jan	Feb	Mar	Apr	May	Jun	Jul	Aug	Sep	Total	%
Self-referral	3255	3074	2777	2777	2433	3079	2936	3063	3123	3323	2294	2785	34919	92%
Emergency services	23	183	158	156	127	126	166	120	66	131	71	113	1440	4%
Other	5	46	60	71	53	57	40	35	44	44	23	20	498	1%
A&E/ Other HCP	53	29	19	43	21	43	36	43	46	88	34	24	479	1%
GP	***	10	11	23	17	22	18	21	22	22	<15	15	198	1%
Work	12	9	12	15	13	10	10	20	12	23	13	9	158	0%
Police	***	9	19	20	17	10	10	12	8	17	***	8	135	0%
Educational establishment	9	5	0	0	0	0	0	0	0	0	0	0	14	0%
Total	3362	3365	3056	3105	2681	3347	3216	3314	3321	3648	2452	2974	37841	100%

[†] A&E = Accident & Emergency; HCP = Health Care Provider; GP = General Practitioner.

Table 3: ED injury attendances by incident location and month, October 2013 to September 2014¹

Incident location	Oct	Nov	Dec	Jan	Feb	Mar	Apr	May	Jun	Jul	Aug	Sep	Total	%
Non specified	385	874	1158	1168	965	1161	1155	1209	1152	1358	974	1035	12594	33%
Home	1386	1275	1021	1032	834	1001	955	1073	1081	1126	633	777	12194	32%
Other	992	496	338	321	306	384	432	285	359	387	372	448	5120	14%
Public place	215	312	265	226	275	443	416	425	403	478	321	397	4176	11%
Work	222	209	175	174	158	156	158	180	156	181	143	160	2072	5%
Educational establishment	162	199	99	184	143	202	<100	<145	165	<120	***	150	1659	4%
Licenced premises	0	0	0	0	0	0	***	***	5	***	<10	7	26	0%
Total	3362	3365	3056	3105	2681	3347	3216	3314	3321	3648	2452	2974	37841	100%

Table 4: ED injury attendances by discharge destination, October 2013 to September 2014^{†1}

Discharge destination	Oct	Nov	Dec	Jan	Feb	Mar	Apr	May	Jun	Jul	Aug	Sep	Total	%
Discharged - did not require any follow-up treatment	1219	1268	1212	1230	1142	1530	1529	1531	1534	1588	1095	1388	16266	43%
Discharged – follow-up treatment to be provided by GP	995	834	617	649	536	538	407	451	435	499	361	446	6768	18%
Referred to fracture clinic	333	335	350	381	345	409	429	411	468	545	344	405	4755	13%
Admitted to a hospital bed	313	405	451	413	329	365	365	407	396	415	254	302	4415	12%
Referred to out-patient clinic	255	212	174	163	140	236	186	204	209	234	182	186	2381	6%
Left department before being treated	112	145	123	117	78	114	107	157	108	187	83	90	1421	4%
Other	34	123	103	122	82	110	58	9	6	21	14	23	705	2%
Referred to other health care professional	0	0	0	0	0	0	98	100	119	124	93	103	637	2%
Transferred to other health care provider	<85	<40	26	<30	29	<45	37	<45	46	<35	26	31	466	1%
Referred to A&E clinic	<20	***	0	0	0	0	0	0	0	0	0	0	21	0%
Died in department	0	0	0	***	0	***	0	***	0	***	0	0	6	0%
Total	3362	3365	3056	3105	2681	3347	3216	3314	3321	3648	2452	2974	37841	100%

[†] A&E = Accident & Emergency; GP = General Practitioner.

¹ Please note that all numbers less than five have been suppressed (with ***) in line with patient confidentiality. If there is only one number less than five in a category then two numbers have been suppressed to prevent back calculations from totals.

ASSAULTS

Table 5: ED assault attendances by incident location and month, October 2013 to September 2014²

Incident location	Oct	Nov	Dec	Jan	Feb	Mar	Apr	May	Jun	Jul	Aug	Sep	Total	%
Other	65	60	89	60	49	41	21	19	21	20	8	13	466	37%
Public place	11	14	10	10	9	17	37	30	31	43	27	39	278	22%
Home	27	30	21	19	15	12	19	16	25	27	26	35	272	22%
Non specified	7	20	28	27	<25	6	7	9	***	7	<10	7	146	12%
Work place	<10	***	***	***	***	<10	10	***	***	***	***	6	52	4%
Licenced premises	0	0	0	0	0	0	***	***	5	***	6	<10	26	2%
Educational establishment	***	***	***	***	0	***	***	***	***	0	0	***	19	2%
Total	120	129	151	122	96	85	98	82	90	103	74	109	1259	100%

Published January 2015

Trauma and Injury Intelligence Group

Centre for Public Health, Faculty of Education, Health and Community, Liverpool John Moores University,

2nd Floor, Henry Cotton Building, Liverpool L3 2ET

T: 0151 231 4498 | E: tiig@ljmu.ac.uk | W: www.tiig.info and www.cph.org.uk | Twitter: [www.twitter.com/tiig_cph](https://twitter.com/tiig_cph)

² Please note that all numbers less than five have been suppressed (with ***) in line with patient confidentiality. If there is only one number less than five in a category then two numbers have been suppressed to prevent back calculations from totals.