

# Trauma and Injury Intelligence Group Biannual Bulletin

Warrington Hospital Emergency Department  
April 2014 to March 2015

July 2015



Centre for Public Health,  
Faculty of Education, Health and Community,  
Liverpool John Moores University,  
Henry Cotton Campus,  
15-21 Webster Street,  
Liverpool, L3 2ET

[cph.org.uk](http://cph.org.uk)

0151 231 4500

[tiig@ljmu.ac.uk](mailto:tiig@ljmu.ac.uk)

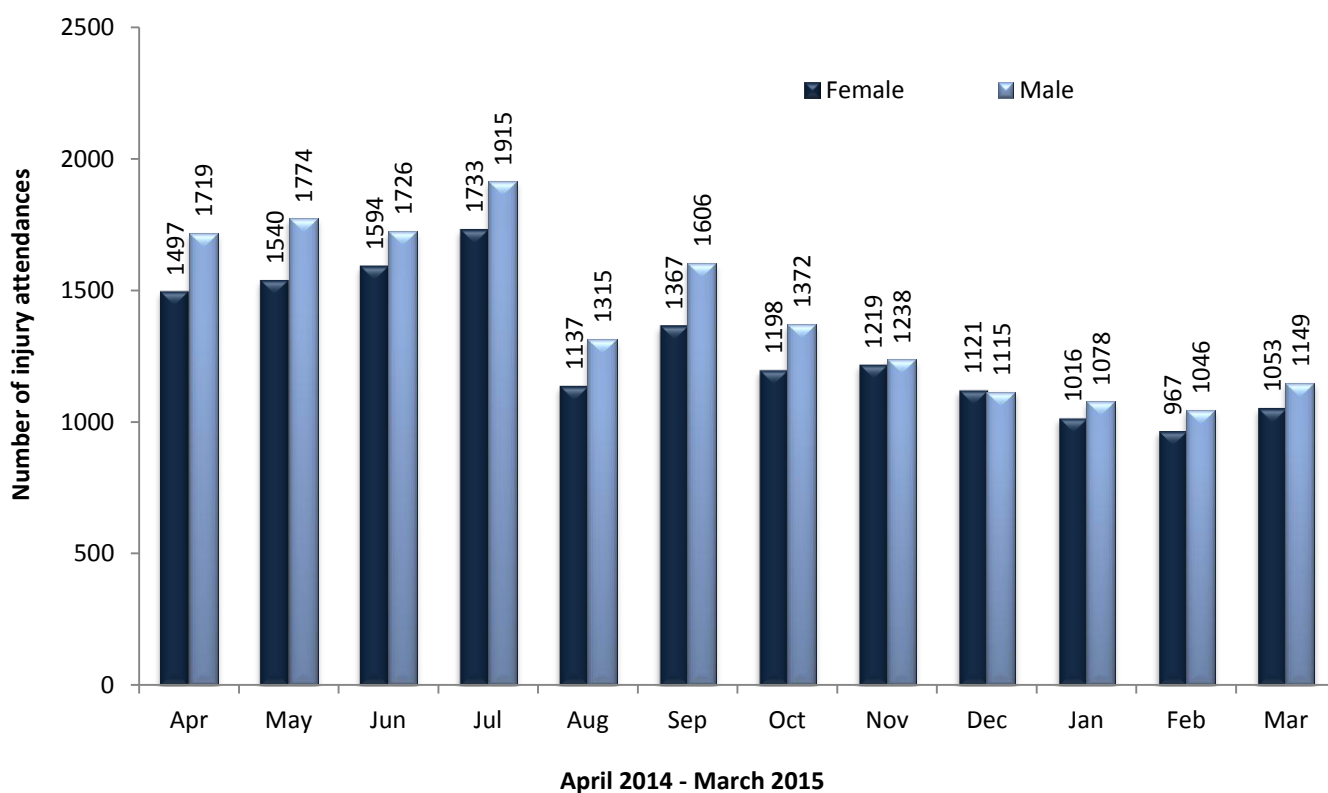
[tiig.info](http://tiig.info)

[twitter.com/tiig\\_cph](https://twitter.com/tiig_cph)

## ALL INJURY ATTENDANCES

This bulletin provides a breakdown of all injury attendances to Warrington Hospital Emergency Department (ED) between April 2014 and March 2015. Over the twelve month period there were 32,498 ED attendances. Note that this report is inclusive of data from Halton Minor Injuries Unit (MIU; n=11,376). The month with the highest number of attendances, calculated as a daily average, was July 2014 (118 per day) while January 2015 had the fewest (68 per day; figure 1). There were slightly more male (52%) than female injury attendances presenting to Warrington Hospital ED (figure 1).

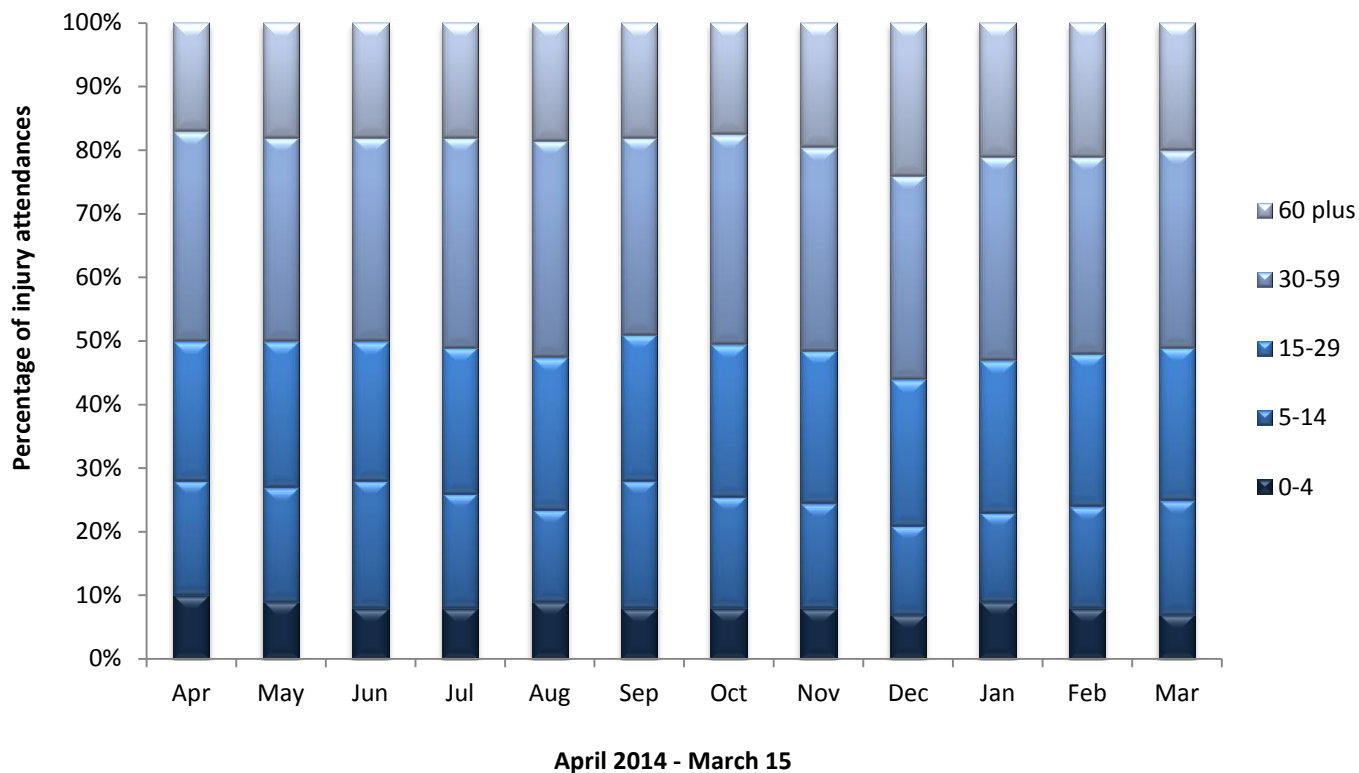
**Figure 1: ED injury attendances by gender and month, April 2014 to March 2015<sup>§</sup>**



<sup>§</sup> Less than five records, where the gender was unknown, were omitted from this chart

Figure 2 displays injury attendances by age group. Injury attendances were highest for those aged between 30 and 59 years (32%), followed by those aged between 15 and 29 years (23%).

**Figure 2: ED injury attendances by age group and month, April 2014 to March 2015<sup>#</sup>**



# Less than five records, where age was unknown, were omitted from the chart.

Table 1 displays attendances to Warrington Hospital ED by injury group. The majority (78%) of attendances were classified as other injury. Sports injuries accounted for 9% of attendances while road traffic collisions (RTCs) accounted for 7%.

**Table 1: ED injury attendances by injury group and month, April 2014 to March 2015<sup>^</sup>**

Injury group	Apr	May	Jun	Jul	Aug	Sep	Oct	Nov	Dec	Jan	Feb	Mar	Total	%
<b>Other injury</b>	2528	2631	2628	2913	1922	2257	1883	1861	1778	1640	1531	1686	25258	78%
<b>Sports injury</b>	312	302	322	322	206	346	299	233	115	165	209	235	3066	9%
<b>Road traffic collision</b>	214	201	211	218	179	181	229	202	193	165	148	158	2299	7%
<b>Assault</b>	98	82	90	103	74	109	80	91	80	68	75	75	1025	3%
<b>Deliberate self-harm</b>	64	98	70	92	71	81	79	70	70	56	51	48	850	3%
<b>Total</b>	3216	3314	3321	3648	2452	2974	2570	2457	2236	2094	2014	2202	32498	100%

<sup>^</sup> Due to low numbers, firework injuries have been included in the 'other' injury category (n=11).

Table 2 displays the source of referral for patients presenting to Warrington Hospital ED. The majority (92%) of injury attendees were self-referred.

**Table 2: ED injury attendances by source of referral and month, April 2014 to March 2015<sup>†1</sup>**

Source of referral	Apr	May	Jun	Jul	Aug	Sep	Oct	Nov	Dec	Jan	Feb	Mar	Total	%
Self-referral	2936	3063	3123	3323	2294	2785	2357	2228	2027	1900	1846	2018	29900	92%
Emergency services	166	120	66	131	71	113	120	104	98	82	83	88	1242	4%
A&E/ Other HCP	36	43	46	88	34	24	41	37	47	50	31	21	498	2%
Other	40	35	44	44	23	20	20	35	26	39	24	44	394	1%
GP	18	21	22	22	<15	15	12	25	10	8	<20	9	192	1%
Work	10	20	12	23	13	9	10	18	16	9	11	16	167	1%
Police	10	12	8	17	***	8	10	10	12	6	***	6	105	0%
<b>Total</b>	<b>3216</b>	<b>3314</b>	<b>3321</b>	<b>3648</b>	<b>2452</b>	<b>2974</b>	<b>2570</b>	<b>2457</b>	<b>2236</b>	<b>2094</b>	<b>2014</b>	<b>2202</b>	<b>32498</b>	<b>100%</b>

<sup>†</sup> A&E = Accident & Emergency; HCP = Health Care Provider; GP = General Practitioner.

Table 3 displays injury attendances by incident location. Almost three in ten (29%) attendances occurred at home while 12% occurred in a public place.

**Table 3: ED injury attendances by incident location and month, April 2014 to March 2015<sup>1</sup>**

Incident location	Apr	May	Jun	Jul	Aug	Sep	Oct	Nov	Dec	Jan	Feb	Mar	Total	%
Non specified	1155	1209	1152	1358	974	1035	1068	996	1021	809	779	832	12388	38%
Home	955	1073	1081	1126	633	777	506	648	701	701	659	683	9543	29%
Public place	416	425	403	478	321	397	360	284	173	204	226	294	3981	12%
Other	432	<290	359	<390	372	448	321	285	177	170	165	196	3597	11%
Work	158	180	156	181	143	160	169	<120	92	98	107	<100	1661	5%
Educational establishment	<100	140	165	115	***	150	134	122	67	104	<75	96	1267	4%
Licensed premises	***	***	5	***	<10	7	12	***	5	8	***	***	61	0%
<b>Total</b>	<b>3216</b>	<b>3314</b>	<b>3321</b>	<b>3648</b>	<b>2452</b>	<b>2974</b>	<b>2570</b>	<b>2457</b>	<b>2236</b>	<b>2094</b>	<b>2014</b>	<b>2202</b>	<b>32498</b>	<b>100%</b>

Table 4 shows the discharge destination of injury attendees. Forty-six per cent were discharged with no follow-up treatment required and 14% were discharged with follow-up treatment to be provided by a General Practitioner (GP). Thirteen per cent were referred to the fracture clinic and 12% were admitted to hospital.

<sup>1</sup> Please note that all numbers less than five have been suppressed (\*\*\*) in line with patient confidentiality. If there is only one number less than five in a category then two numbers have been suppressed to prevent back calculations from totals.

**Table 4: ED injury attendances by discharge destination, April 2014 to March 2015<sup>1</sup>**

Discharge destination	Apr	May	Jun	Jul	Aug	Sep	Oct	Nov	Dec	Jan	Feb	Mar	Total	%
Discharged - no follow-up treatment required	1529	1531	1534	1588	1095	1388	1314	1173	995	958	872	990	14967	46%
Discharged – follow-up by GP	407	451	435	499	361	446	300	324	315	298	375	437	4648	14%
Referred to fracture clinic	429	411	468	545	344	405	312	305	260	225	222	220	4146	13%
Admitted to a hospital bed	365	407	396	415	254	302	253	303	363	347	276	291	3972	12%
Referred to out-patient clinic	186	204	209	234	182	186	179	141	100	104	100	90	1915	6%
Left department before being treated	107	157	108	187	83	90	85	<95	114	72	<95	80	1267	4%
Referred to health care professional	98	100	119	124	93	103	83	79	<55	<50	46	<60	1002	3%
Transferred to other health care provider	37	<45	46	<35	26	31	34	26	27	33	26	30	392	1%
Other	58	9	6	21	14	23	10	12	5	8	5	5	176	1%
Died in department	0	***	0	***	0	0	0	***	***	***	***	***	13	0%
<b>Total</b>	<b>3216</b>	<b>3314</b>	<b>3321</b>	<b>3648</b>	<b>2452</b>	<b>2974</b>	<b>2570</b>	<b>2457</b>	<b>2236</b>	<b>2094</b>	<b>2014</b>	<b>2202</b>	<b>32498</b>	<b>100%</b>

## ASSAULT ATTENDANCES

There were 1,025 assault attendances to Warrington Hospital ED between April 2014 and March 2015. The majority (68%) of assault attendees were male and close to half (48%) were aged between 15 and 29 years. Table 5 shows that 36% of assaults occurred in a public place and 28% occurred in the home.

**Table 5: ED assault attendances by incident location and month, April 2014 to March 2015<sup>1</sup>**

Incident location	Apr	May	Jun	Jul	Aug	Sep	Oct	Nov	Dec	Jan	Feb	Mar	Total	%
Public place	37	30	31	43	27	39	29	25	34	23	23	26	367	36%
Home	19	16	25	27	26	35	20	25	22	19	25	23	282	28%
Other	21	19	21	20	<10	13	11	10	9	11	<20	11	172	17%
Non specified	7	9	***	7	6	<10	7	24	<10	7	5	8	98	10%
Licensed premises	***	***	5	***	6	7	<15	***	5	8	***	***	61	6%
Work place	10	***	***	***	***	6	***	***	***	0	0	***	32	3%
Educational establishment	***	***	***	0	0	***	0	***	0	0	0	***	13	1%
<b>Total</b>	<b>98</b>	<b>82</b>	<b>90</b>	<b>103</b>	<b>74</b>	<b>109</b>	<b>80</b>	<b>91</b>	<b>80</b>	<b>68</b>	<b>75</b>	<b>75</b>	<b>1025</b>	<b>100%</b>