

TIIG  
INJURY SURVEILLANCE IN THE NORTH WEST OF ENGLAND

CUMBERLAND INFIRMARY EMERGENCY DEPARTMENT

MONTHLY BULLETIN: APRIL 2013 TO MARCH 2014

This bulletin provides a breakdown of all injury attendances to Cumberland Infirmary Emergency Department (ED) between April 2013 and March 2014.

In the twelve month period there were 22,626 injury attendances to the ED. The month with the highest number of attendances was July 2013 (n=2,297) compared to February 2014 (n=1,721), the month with the fewest (**Figure 1**).

There were more males than females attending the ED in 2013/14 (males=11,904; 53%) (**Figure 1**). Just under one-third (32%) were aged between 30 and 59 years (n=7,137), followed by 28% aged 60 years and above (n=6,340) and 24% aged between 15 and 29 years (n=5,420) (**Figure 2**).

**Table 1** shows the injury group of attendances between April 2013 and March 2014. The majority (81%) of attendances were categorised as 'other' injury (n=18,281). Sports injury accounted for 7% of attendances (n=1,688) and 5% were due to deliberate self-harm (n=1,044). Furthermore, road traffic collisions accounted for 4% of attendances in 2013/14 (n=920) followed by 3% due to assaults (n=693).

The referral source to the ED is detailed in **Table 2**. Over half (54%) self-referred (n=12,205) while over one in five (22%) were referred by the emergency services (n=4,883) and 17% were referred by a general medical practitioner (n=3,837).

**Table 3** illustrates the incident location. The primary incident location was the home where over half

(54%) of incidents occurred (n=12,116), while just under one-third (32%) were recorded as 'other' location (n=7,174).

The discharge destination for ED attendances is displayed in **Table 4**. Almost half (47%) were discharged from hospital with no follow-up treatment required (n=10,536). Just over a quarter (26%) were admitted to hospital (n=5,933) and 13% were referred to an outpatient clinic (n=2,989).

#### ASSAULT ATTENDANCES

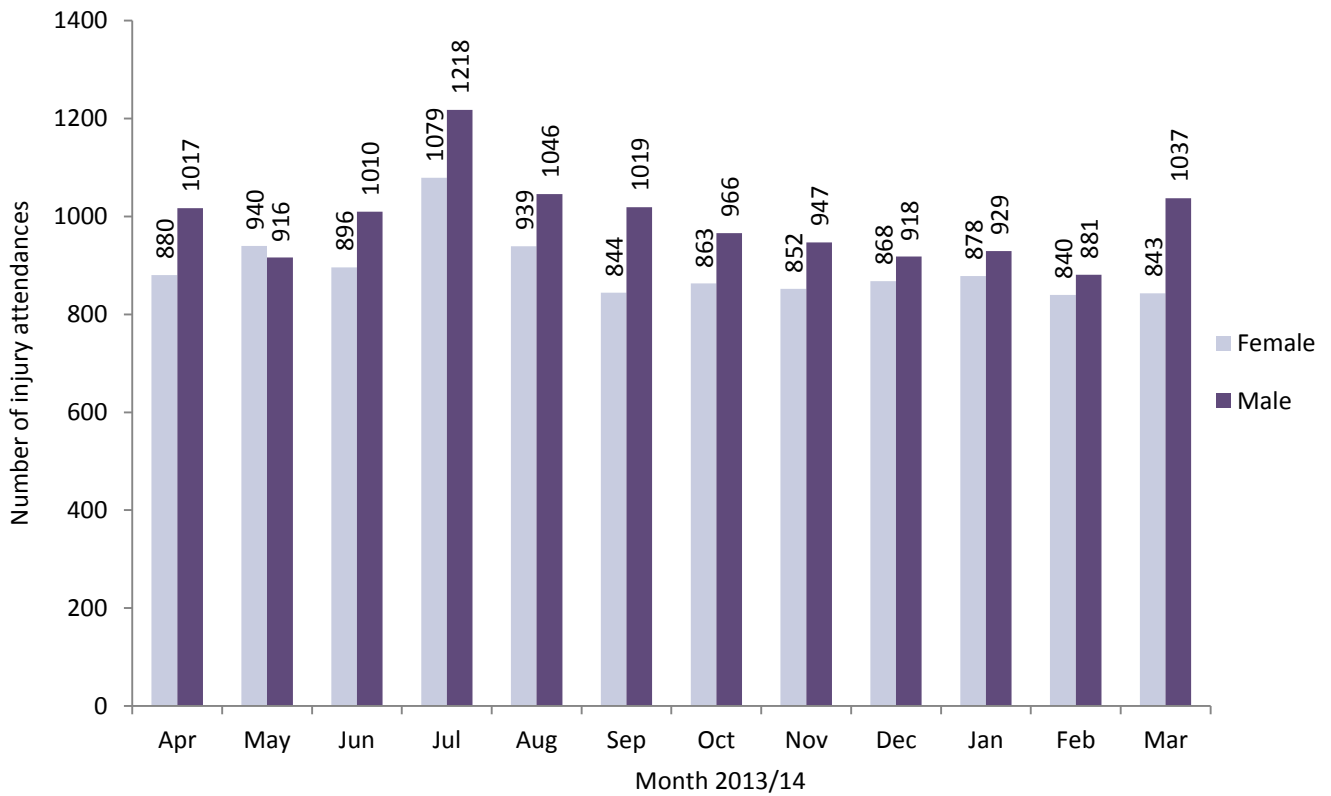
Between April 2013 and March 2014 there were 693 assault attendances to Cumberland Infirmary ED. The month with the highest number was March 2014 with 77 assault attendances (**Figure 3**).

The majority (77%) of attendees presenting to the ED with assault-related injuries were male (n=531) (**Figure 3**). Just under three in five (59%) were aged between 15 and 29 years (n=411) while 36% were aged between 30 and 59 years (n=251) (**Table 5**).

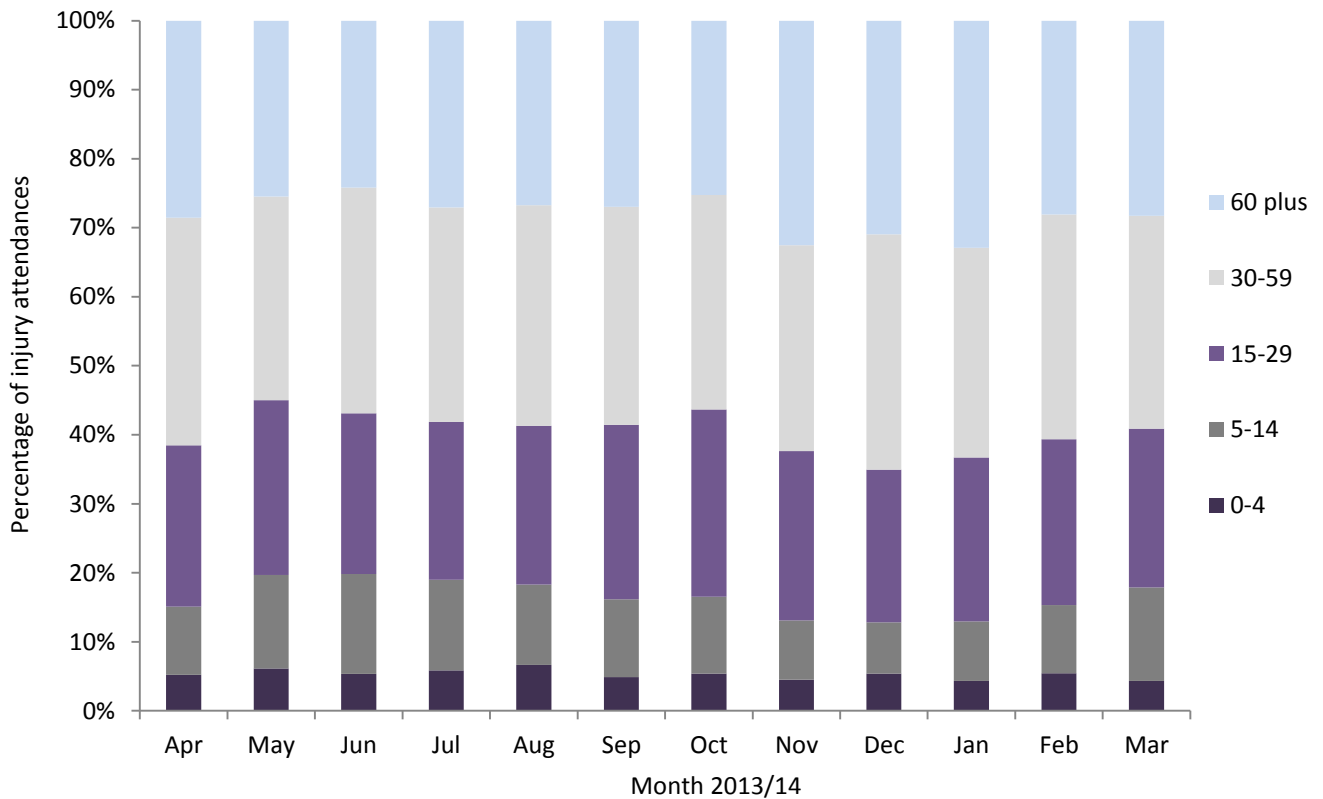
The assault location is shown in **Table 6**. Over half (53%) of incidents were recorded as occurring in 'other' location (n=367). Over one-quarter (27%) occurred in a public place (n=188) and 16% occurred in the home (n=113).

**Table 7** illustrates the disposal method of assault attendances. Almost three-fifths (57%) were discharged from hospital with no follow-up treatment required (n=397), while one-fifth (20%) required follow-up treatment (n=136) and 9% were admitted to hospital (n=63).

**Figure 1: ED attendances by gender and month, April 2013 to March 2014**



**Figure 2: ED attendances by age group and month, April 2013 to March 2014**



**Table 1: ED attendances by injury group and month, April 2013 to March 2014**

| Injury group           | Apr         | May         | Jun         | Jul         | Aug         | Sep         | Oct         | Nov         | Dec         | Jan         | Feb         | Mar         | Total        | %           |
|------------------------|-------------|-------------|-------------|-------------|-------------|-------------|-------------|-------------|-------------|-------------|-------------|-------------|--------------|-------------|
| Other injury           | 1619        | 1526        | 1547        | 1905        | 1639        | 1462        | 1438        | 1451        | 1441        | 1466        | 1368        | 1419        | 18281        | 81%         |
| Sports injury          | 127         | 121         | 123         | 131         | 94          | 173         | 176         | 152         | 118         | 123         | 130         | 220         | 1688         | 7%          |
| Deliberate self-harm   | 60          | 93          | 83          | 103         | 111         | 83          | 93          | 77          | 77          | 89          | 80          | 95          | 1044         | 5%          |
| Road traffic collision | 54          | 70          | 82          | 97          | 77          | 85          | 71          | 65          | 95          | 79          | 76          | 69          | 920          | 4%          |
| Assault                | 37          | 46          | 71          | 61          | 64          | 60          | 51          | 54          | 55          | 50          | 67          | 77          | 693          | 3%          |
| <b>Total</b>           | <b>1897</b> | <b>1856</b> | <b>1906</b> | <b>2297</b> | <b>1985</b> | <b>1863</b> | <b>1829</b> | <b>1799</b> | <b>1786</b> | <b>1807</b> | <b>1721</b> | <b>1880</b> | <b>22626</b> | <b>100%</b> |

**Table 2: ED attendances by referral source and month, April 2013 to March 2014<sup>1,2</sup>**

| Referral source              | Apr         | May         | Jun         | Jul         | Aug         | Sep         | Oct         | Nov         | Dec         | Jan         | Feb         | Mar         | Total        | %           |
|------------------------------|-------------|-------------|-------------|-------------|-------------|-------------|-------------|-------------|-------------|-------------|-------------|-------------|--------------|-------------|
| Self-referral                | 1002        | 1115        | 1122        | 1252        | 1075        | 1001        | 1036        | 877         | 884         | 864         | 947         | 1030        | 12205        | 54%         |
| Emergency services           | 312         | 378         | 410         | 470         | 455         | 395         | 369         | 378         | 433         | 430         | 405         | 448         | 4883         | 22%         |
| General medical practitioner | 437         | 221         | 219         | 391         | 281         | 319         | 287         | 402         | 342         | 393         | 264         | 281         | 3837         | 17%         |
| Other                        | 80          | 57          | 91          | 108         | 91          | 72          | 67          | 79          | 65          | 69          | 60          | 69          | 908          | 4%          |
| Work                         | 29          | 43          | 27          | 37          | 35          | 32          | 26          | 27          | 21          | 22          | 18          | 21          | 338          | 1%          |
| Health care provider         | 23          | 24          | 16          | 28          | 35          | 25          | 25          | 19          | 25          | 17          | 16          | 13          | 266          | 1%          |
| Police                       | 7           | <20         | 9           | <10         | <15         | 11          | 11          | 10          | <15         | <10         | <15         | 10          | 125          | 1%          |
| Educational establishment    | 7           | ***         | 12          | ***         | ***         | 8           | 8           | 7           | ***         | ***         | ***         | 8           | 64           | 0%          |
| <b>Total</b>                 | <b>1897</b> | <b>1856</b> | <b>1906</b> | <b>2297</b> | <b>1985</b> | <b>1863</b> | <b>1829</b> | <b>1799</b> | <b>1786</b> | <b>1807</b> | <b>1721</b> | <b>1880</b> | <b>22626</b> | <b>100%</b> |

**Table 3: ED attendances by incident location and month, April 2013 to March 2014<sup>1</sup>**

| Incident location         | Apr         | May         | Jun         | Jul         | Aug         | Sep         | Oct         | Nov         | Dec         | Jan         | Feb         | Mar         | Total        | %           |
|---------------------------|-------------|-------------|-------------|-------------|-------------|-------------|-------------|-------------|-------------|-------------|-------------|-------------|--------------|-------------|
| Home                      | 1070        | 937         | 967         | 1217        | 1078        | 931         | 940         | 1020        | 998         | 1115        | 909         | 934         | 12116        | 54%         |
| Other                     | 584         | 609         | 628         | 706         | 647         | 627         | 583         | 530         | 577         | 483         | 575         | 625         | 7174         | 32%         |
| Public place              | 159         | 167         | 165         | 236         | 192         | 165         | 145         | 114         | 112         | 97          | 113         | 148         | 1813         | 8%          |
| Work                      | <55         | 65          | 78          | 85          | <70         | 82          | 76          | 79          | 48          | 42          | 61          | 80          | 814          | 4%          |
| Educational establishment | <35         | 78          | 68          | 53          | ***         | 58          | 85          | 56          | 51          | 70          | 63          | 93          | 709          | 3%          |
| <b>Total</b>              | <b>1897</b> | <b>1856</b> | <b>1906</b> | <b>2297</b> | <b>1985</b> | <b>1863</b> | <b>1829</b> | <b>1799</b> | <b>1786</b> | <b>1807</b> | <b>1721</b> | <b>1880</b> | <b>22626</b> | <b>100%</b> |

**Table 4: ED attendances by discharge destination<sup>1,3</sup> and month, April 2013 to March 2014**

| Discharge destination                      | Apr         | May         | Jun         | Jul         | Aug         | Sep         | Oct         | Nov         | Dec         | Jan         | Feb         | Mar         | Total        | %           |
|--|-------------|-------------|-------------|-------------|-------------|-------------|-------------|-------------|-------------|-------------|-------------|-------------|--------------|-------------|
| Discharged - no follow-up                  | 877         | 914         | 940         | 1124        | 911         | 872         | 895         | 763         | 834         | 720         | 859         | 827         | 10536        | 47%         |
| Admitted to hospital                       | 572         | 396         | 412         | 561         | 498         | 472         | 452         | 570         | 523         | 592         | 439         | 446         | 5933         | 26%         |
| Outpatient clinic                          | 231         | 268         | 288         | 298         | 254         | 254         | 229         | 240         | 201         | 214         | 220         | 292         | 2989         | 13%         |
| Discharged - follow-up care by GP          | 99          | 160         | 112         | 155         | 141         | 107         | 92          | 62          | 63          | 103         | 73          | 145         | 1312         | 6%          |
| Referred to other health care professional | 28          | 31          | 42          | 39          | 52          | 37          | 32          | 41          | 34          | 30          | 31          | 59          | 456          | 2%          |
| Other                                      | 15          | 17          | 23          | 26          | 25          | 40          | 52          | 53          | 54          | 71          | 29          | 35          | 440          | 2%          |
| Referred to ED clinic                      | 41          | 36          | 46          | 46          | 38          | 31          | 30          | 28          | 30          | 31          | 24          | 28          | 409          | 2%          |
| Left before being treated                  | 21          | 20          | 30          | 32          | 40          | 32          | 33          | 22          | 33          | 31          | 36          | 31          | 361          | 2%          |
| Transferred to other HCP                   | 7           | <15         | <15         | 11          | <25         | 11          | <15         | <20         | <15         | 15          | 10          | <20         | 153          | 1%          |
| Left having refused treatment              | <10         | ***         | ***         | 5           | ***         | <10         | ***         | ***         | ***         | 0           | 0           | ***         | <35          | 0%          |
| Died in department                         | ***         | 0           | 0           | 0           | 0           | ***         | 0           | 0           | 0           | 0           | 0           | 0           | ***          | 0%          |
| <b>Total</b>                               | <b>1897</b> | <b>1856</b> | <b>1906</b> | <b>2297</b> | <b>1985</b> | <b>1863</b> | <b>1829</b> | <b>1799</b> | <b>1786</b> | <b>1807</b> | <b>1721</b> | <b>1880</b> | <b>22626</b> | <b>100%</b> |

<sup>1</sup> Please note that all numbers less than five have been suppressed (with \*\*\*) in line with patient confidentiality. If there is only one number less than five in a category then two numbers have been suppressed to prevent back calculations from totals.

<sup>2</sup> 'Other' includes general dental practitioner, local authority social services and other.

<sup>3</sup> GP = General practitioner; HCP = Health care provider

## ASSAULTS

Figure 3: ED assault attendances by gender and month, April 2013 to March 2014

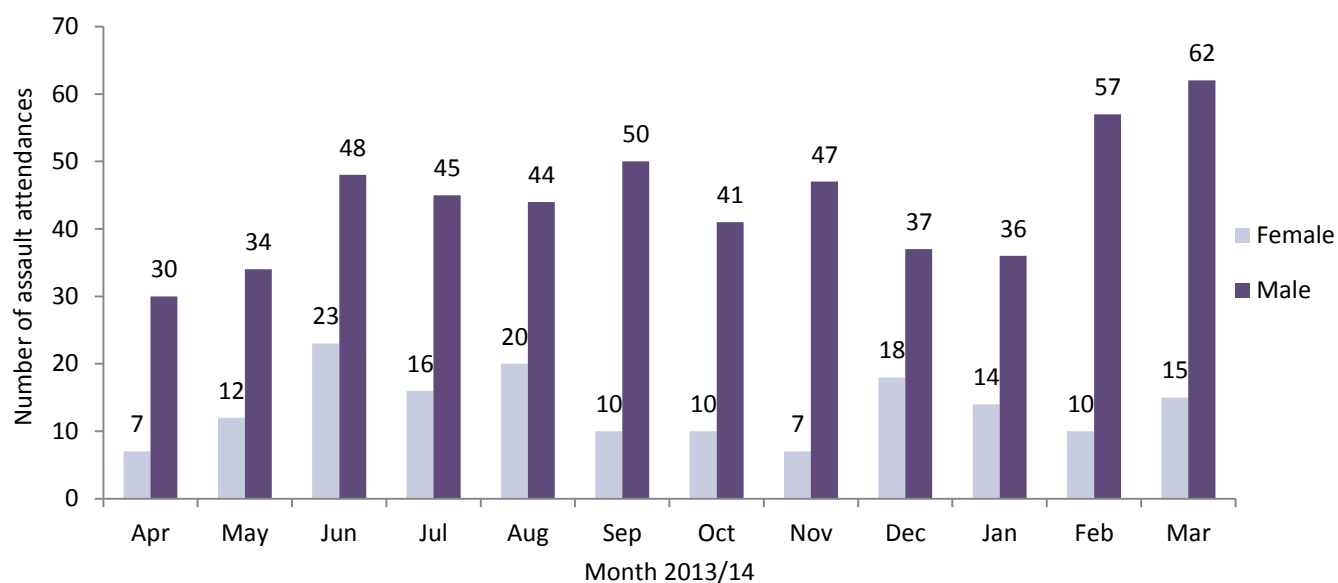


Table 5: ED assault attendances by age group and month, April 2013 to March 2014<sup>4</sup>

| Age group    | Apr       | May       | Jun       | Jul       | Aug       | Sep       | Oct       | Nov       | Dec       | Jan       | Feb       | Mar       | Total      | %           |
|--------------|-----------|-----------|-----------|-----------|-----------|-----------|-----------|-----------|-----------|-----------|-----------|-----------|------------|-------------|
| 5-14         | ***       | ***       | <10       | ***       | ***       | ***       | 0         | ***       | ***       | ***       | ***       | <10       | 23         | 3%          |
| 15-29        | 19        | 27        | 38        | 40        | 39        | 33        | 32        | 31        | 33        | 30        | 44        | 45        | 411        | 59%         |
| 30-59        | 17        | 15        | 27        | 19        | 22        | 25        | 19        | 22        | 20        | 18        | 21        | 26        | 251        | 36%         |
| 60 plus      | ***       | ***       | ***       | ***       | ***       | ***       | 0         | ***       | ***       | ***       | ***       | ***       | 8          | 1%          |
| <b>Total</b> | <b>37</b> | <b>46</b> | <b>71</b> | <b>61</b> | <b>64</b> | <b>60</b> | <b>51</b> | <b>54</b> | <b>55</b> | <b>50</b> | <b>67</b> | <b>77</b> | <b>693</b> | <b>100%</b> |

<sup>4</sup> There were no assault attendances in the 0-4 years category.

Table 6: ED assault attendances by incident location and month, April 2013 to March 2014<sup>4</sup>

| Incident location         | Apr       | May       | Jun       | Jul       | Aug       | Sep       | Oct       | Nov       | Dec       | Jan       | Feb       | Mar       | Total      | %           |    |
|---------------------------|-----------|-----------|-----------|-----------|-----------|-----------|-----------|-----------|-----------|-----------|-----------|-----------|------------|-------------|----|
| Other                     | 20        | 28        | 41        | 32        | 37        | 29        | 29        | 30        | 28        | 24        | 31        | 38        | 367        | 53%         |    |
| Public place              | 14        | 12        | 15        | 17        | 13        | 16        | 11        | 14        | 15        | 16        | 24        | 21        | 188        | 27%         |    |
| Home                      | ***       | 6         | 12        | 9         | <15       | 12        | 9         | <10       | 10        | <10       | <10       | 13        | 113        | 16%         |    |
| Educational establishment | ***       | 0         | ***       | ***       | 0         | ***       | ***       | ***       | ***       | ***       | ***       | ***       | 5          | 17          | 2% |
| Work                      | 0         | 0         | ***       | ***       | ***       | ***       | ***       | 0         | ***       | 0         | 0         | 0         | 8          | 1%          |    |
| <b>Total</b>              | <b>37</b> | <b>46</b> | <b>71</b> | <b>61</b> | <b>64</b> | <b>60</b> | <b>51</b> | <b>54</b> | <b>55</b> | <b>50</b> | <b>67</b> | <b>77</b> | <b>693</b> | <b>100%</b> |    |

Table 7: ED assault attendances by disposal method and month, April 2013 to March 2014<sup>4</sup>

| Disposal     | Apr       | May       | Jun       | Jul       | Aug       | Sep       | Oct       | Nov       | Dec       | Jan       | Feb       | Mar       | Total      | %           |
|--------------|-----------|-----------|-----------|-----------|-----------|-----------|-----------|-----------|-----------|-----------|-----------|-----------|------------|-------------|
| Discharged   | 27        | 25        | 34        | 40        | 33        | 31        | 29        | 24        | 35        | 34        | 38        | 47        | 397        | 57%         |
| Follow-up    | 5         | 14        | 22        | <10       | 11        | 14        | 5         | 17        | 8         | ***       | 11        | 18        | 136        | 20%         |
| Other        | ***       | ***       | <15       | 9         | 13        | 6         | 11        | 5         | 7         | <10       | 13        | 7         | 97         | 14%         |
| Admitted     | ***       | ***       | ***       | ***       | 7         | 9         | 6         | 8         | 5         | 5         | 5         | 5         | 63         | 9%          |
| <b>Total</b> | <b>37</b> | <b>46</b> | <b>71</b> | <b>61</b> | <b>64</b> | <b>60</b> | <b>51</b> | <b>54</b> | <b>55</b> | <b>50</b> | <b>67</b> | <b>77</b> | <b>693</b> | <b>100%</b> |

Published June 2014

Karen A Critchley (née Swarbrick) – TIIG Researcher/Analyst

Centre for Public Health, Faculty of Education, Health and Community, Liverpool John Moores University,  
2nd Floor, Henry Cotton Building, Liverpool L3 2ET

T: 0151 231 4498 | E: [k.a.critchley@ljmu.ac.uk](mailto:k.a.critchley@ljmu.ac.uk) | W: [www.tiig.info](http://www.tiig.info) and [www.cph.org.uk](http://www.cph.org.uk) | Twitter: [www.twitter.com/tiig\\_cph](https://twitter.com/tiig_cph)

<sup>4</sup> Please note that all numbers less than five have been suppressed (with \*\*\*) in line with patient confidentiality. If there is only one number less than five in a category then two numbers have been suppressed to prevent back calculations from totals.