

Furness General Hospital Emergency Department Monthly Bulletin: July 2010 to June 2011

This bulletin provides a breakdown of all injury attendances to Furness General Hospital Emergency Department (ED) between July 2010 and June 2011. Injury attendances peaked in July (n=822), with June (n=402) having the fewest.

There were more male (59%) injury attendances than female presenting at Furness General Hospital ED (**Figure 1**). Two-fifths (40%) of injury attendances were aged 25 to 59 years, while 29% were aged 5 to 19 (**Figure 2**).

Most injury attendances were recorded as other injury (57%), 21% were sports injury and 12% road traffic collisions (RTC) (**Table 1**).

Table 2 shows the vast majority of injury attendances in the 0 to 4 (89%) and 60 plus (84%) age groups were recorded as other injury. Apart

from other injury, sports injury was the most common injury group in people aged 5 to 19 (37%) and 20 to 24 (29%). In the 25 to 59 age group, RTC (16%) and sports injury (14%) were most frequent.

Table 3 shows that the majority (84%) of injury attendees self-referred and 8% were referred by the emergency services. For most age groups, the emergency services were the second highest referral source (**Table 4**).

Over four in ten of all injury attendances occurred in the home (41%) and in a public place (41%) (**Table 5**).

Over four in ten (44%) of attendees were discharged requiring no follow-up treatment; 19% were discharged into the care of their GP, whilst 12% were admitted (**Table 6**).

Figure 1: Gender of injury attendances by month, July 2010 to June 2011

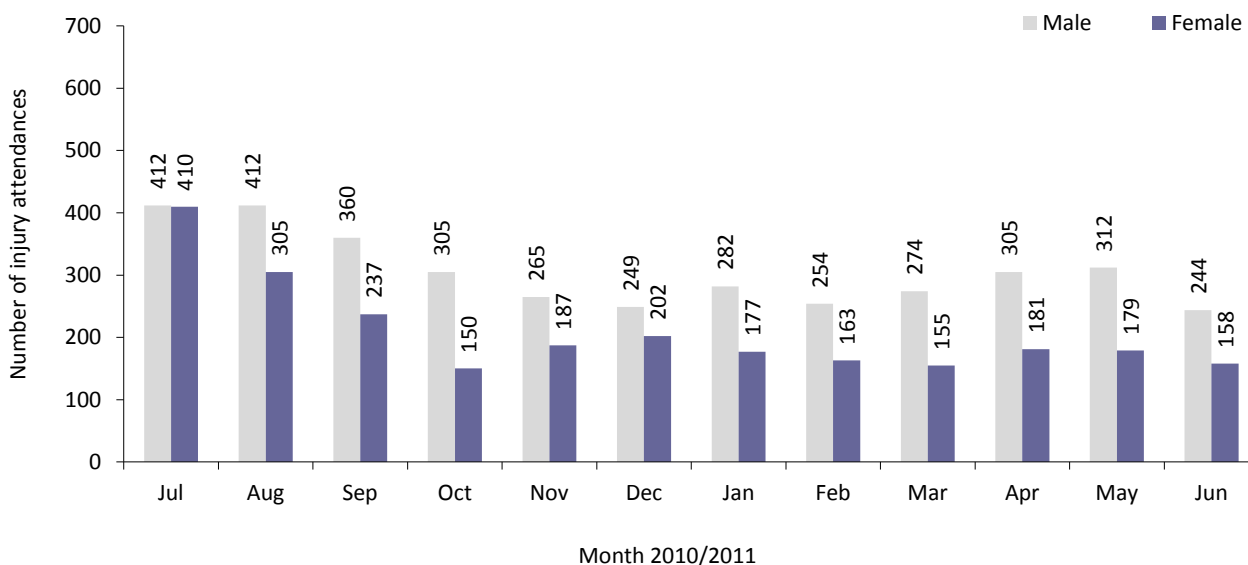


Figure 2: Age group of injury attendances by month, July 2010 to June 2011

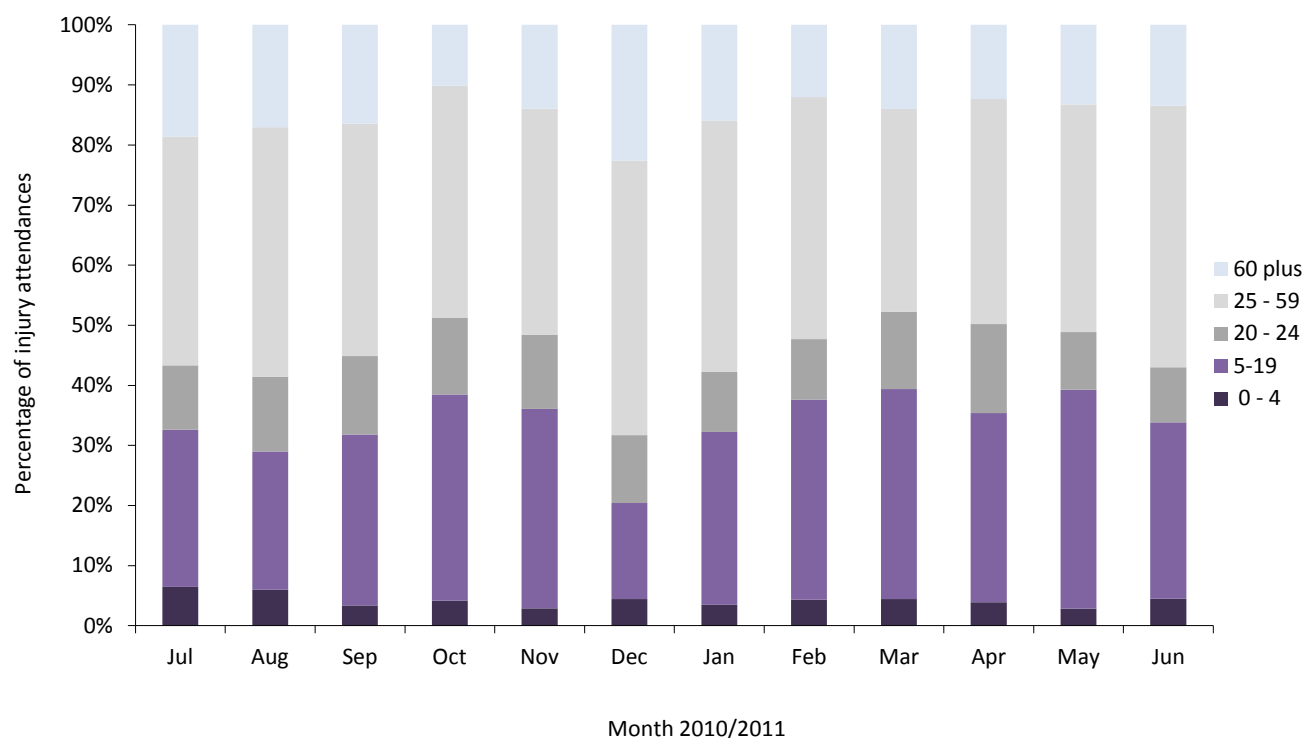


Table 1: Injury attendances by injury group and month, July 2010 to June 2011¹

Injury group	Jul	Aug	Sep	Oct	Nov	Dec	Jan	Feb	Mar	Apr	May	Jun	Total	%
Other injury	627	513	344	178	209	320	237	198	178	227	270	193	3494	57
Sports injury	69	77	142	144	111	32	90	113	143	139	121	111	1292	21
RTC	71	82	70	58	80	59	70	52	46	58	52	46	744	12
Assault	24	30	20	40	30	19	34	35	32	37	37	27	365	6
Deliberate self-harm (DSH)	31	15	21	35	22	21	28	19	30	25	11	25	283	5
Total	822	717	597	455	452	451	459	417	429	486	491	402	6178	100

Table 2: Injury attendances by injury group and age group, July 2010 to June 2011

Injury group	0 - 4		5 - 19		20 - 24		25 - 59		60 plus		Total
	N	%	N	%	N	%	N	%	N	%	
Assault	0	0	99	6	81	11	179	7	6	1	365
DSH	0	0	69	4	52	7	153	6	9	1	283
Other injury	241	89	808	45	286	40	1361	56	798	84	3494
RTC	18	7	163	9	89	12	396	16	78	8	744
Sports injury	13	5	660	37	211	29	353	14	55	6	1292
Total	272	100	1799	100	719	100	2442	100	946	100	6178

Table 3: Injury attendances by source of referral and month, July 2010 to June 2011²³

Source of referral	Jul	Aug	Sep	Oct	Nov	Dec	Jan	Feb	Mar	Apr	May	Jun	Total	%
Self-referral	636	562	489	363	388	357	405	361	378	437	440	349	5165	84
Emergency services	123	91	56	26	21	59	24	17	20	17	13	19	486	8
Other	24	25	18	30	10	16	11	12	7	11	11	11	186	3
GP	24	30	14	6	9	10	8	<6	***	7	8	9	134	2
Police	11	6	7	10	14	<6	7	9	***	10	6	7	96	2
Educational establishment	***	***	7	20	6	***	***	10	15	***	12	6	84	1
Work	***	***	6	***	***	***	***	***	***	***	***	***	<27	0
Health care provider: same or other	0	***	0	***	***	0	0	0	0	0	***	***	***	0
Total	822	717	597	455	452	451	459	417	429	486	491	402	6178	100

Table 4: Injury attendances by source of referral and age group, July 2010 to June 2011

Source of referral	0 - 4		5 - 19		20 - 24		25 - 59		60 plus		Total
	N	%	N	%	N	%	N	%	N	%	
Educational establishment	0	0	82	5	0	0	***	0	***	0	84
Emergency services	16	6	75	4	42	6	158	6	195	21	486
GP	***	0	<25	1	<12	2	60	2	38	4	134
Health care provider: same or other	0	0	***	0	***	0	***	0	***	0	***
Other	9	3	42	2	25	3	71	3	39	4	186
Police	***	0	22	1	19	3	52	2	***	0	96
Self referral	246	90	1549	86	617	86	2084	85	669	71	5165
Work	0	0	***	0	5	1	16	1	***	0	<27
Total	272	100	1799	100	719	100	2442	100	946	100	6178

Table 5: Injury attendances by location of incident and month, July 2010 to June 2011

Location	Jul	Aug	Sep	Oct	Nov	Dec	Jan	Feb	Mar	Apr	May	Jun	Total	%
Home	487	419	257	135	133	204	183	140	125	162	144	149	2538	41
Public place	234	230	227	226	222	207	195	175	178	239	220	165	2518	41
Other	43	44	57	39	40	12	51	42	44	40	55	41	508	8
Educational establishment	14	0	28	38	38	14	15	33	51	18	44	19	312	5
Work	44	24	28	17	19	14	15	27	31	27	28	28	302	5
Total	822	717	597	455	452	451	459	417	429	486	491	402	6178	100

Table 6: Disposal method of all injury attendances by month, July 2010 to June 2011

Disposal	Jul	Aug	Sep	Oct	Nov	Dec	Jan	Feb	Mar	Apr	May	Jun	Total	%
Discharged - did not require follow-up treatment	334	248	242	203	188	160	192	209	212	255	239	208	2690	44
Discharge - follow-up care by GP	187	197	159	97	101	73	73	63	71	69	64	41	1195	19
Admit to hospital bed	135	115	55	38	39	92	73	38	34	32	43	49	743	12
Referred to fracture clinic	59	71	74	58	50	50	41	50	54	50	70	47	674	11
Referred to ED clinic	29	20	21	24	24	36	23	19	24	32	35	21	308	5
Referred to out-patient clinic	26	24	19	12	25	6	16	13	12	17	22	10	202	3
Left - before being treated	21	14	13	***	11	17	24	11	9	16	<7	13	159	3
Refer to other health care provider	19	12	7	7	***	7	6	***	***	5	7	5	85	1
Transfer to other health care provider	***	10	***	8	***	***	***	5	***	5	***	***	54	1
Other	7	5	***	***	***	5	***	5	***	***	***	***	40	1
Left - refused treatment	***	***	***	***	5	***	***	***	***	***	***	***	25	0
Patient died in department	***	***	***	***	***	***	***	***	***	***	***	***	***	0
Total	822	717	597	455	452	451	459	417	429	486	491	402	6178	100

Published October 2011

Johnathan Rooney (TIIG Officer)

Centre for Public Health, Liverpool John Moores University, 2nd Floor, Henry Cotton Building, Liverpool, L3 2ET

Tel: 0151 231 4513 Email: j.rooney@ljmu.ac.uk

Website: www.tiig.info (please note data requests should be made through the website)

¹ Please note percentages might not add to one hundred due to rounding.

² GP=General practitioner.

³ Please note that all numbers less than five have been suppressed in line with patient confidentiality and if there is only one number is less than five in a category then two numbers will be suppressed at the next level (e.g. <6) in order to prevent back calculations from totals.