

Furness General Hospital Emergency Department Monthly Bulletin: January to December 2011

This bulletin provides a breakdown of all injury attendances to Furness General Hospital Emergency Department (ED) between January and December 2011. Injury attendances peaked in July (n=722), with December (n=329) having the fewest.

There were more male (61%) injury attendances than female presenting at Furness General Hospital ED (**Figure 1**). Two-fifths (40%) of injury attendances were aged 25 to 59 years, while 29% were aged 5 to 19 (**Figure 2**).

Most injury attendances were recorded as other injury (54%), 24% were sports injury and 11% road traffic collisions (RTC) (**Table 1**).

Table 2 shows the vast majority of injury attendances in the 0 to 4 (88%) and 60 plus (83%) age groups were recorded as other injury. Apart

from other injury, sports injury was the most common injury group in people aged 5 to 19 (40%), 20 to 24 (30%), 25 to 59 (17%) and 60 plus (8%).

Table 3 shows that the majority (87%) of injury attendees self-referred and 6% were referred by the emergency services. For most age groups, the emergency services were the second highest referral source (**Table 4**).

Over four in ten of all injury attendances occurred in a public place (41%) and 38% occurred in the home (**Table 5**).

Nearly half (47%) of attendees were discharged requiring no follow-up treatment; 17% were discharged into the care of their GP, whilst 11% were referred to a fracture clinic (**Table 6**).

Figure 1: Gender of injury attendances by month, January to December 2011

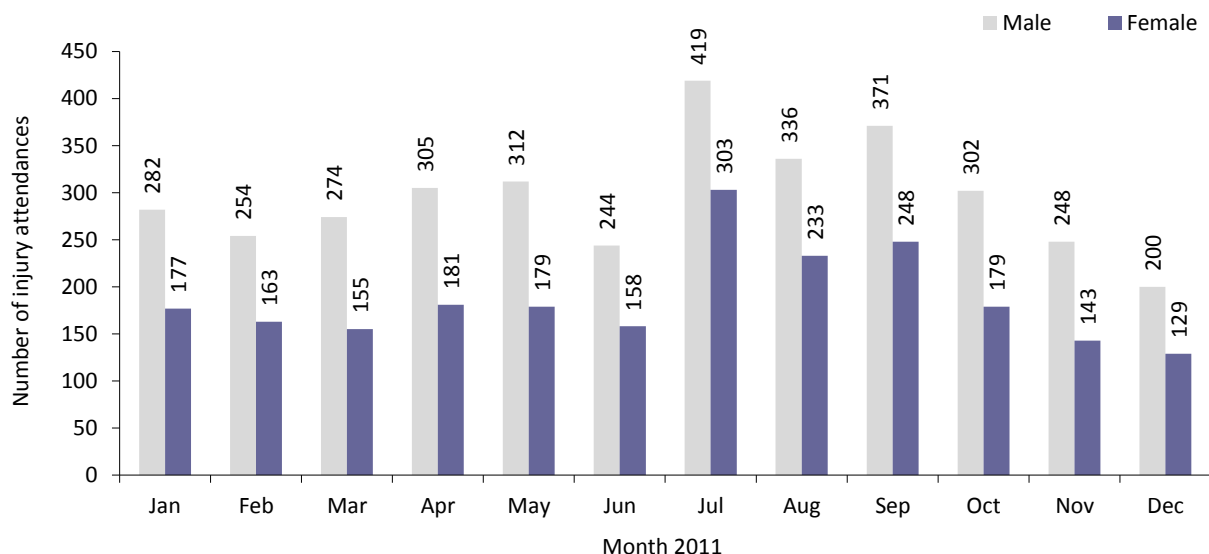


Figure 2: Age group of injury attendances by month, January to December 2011

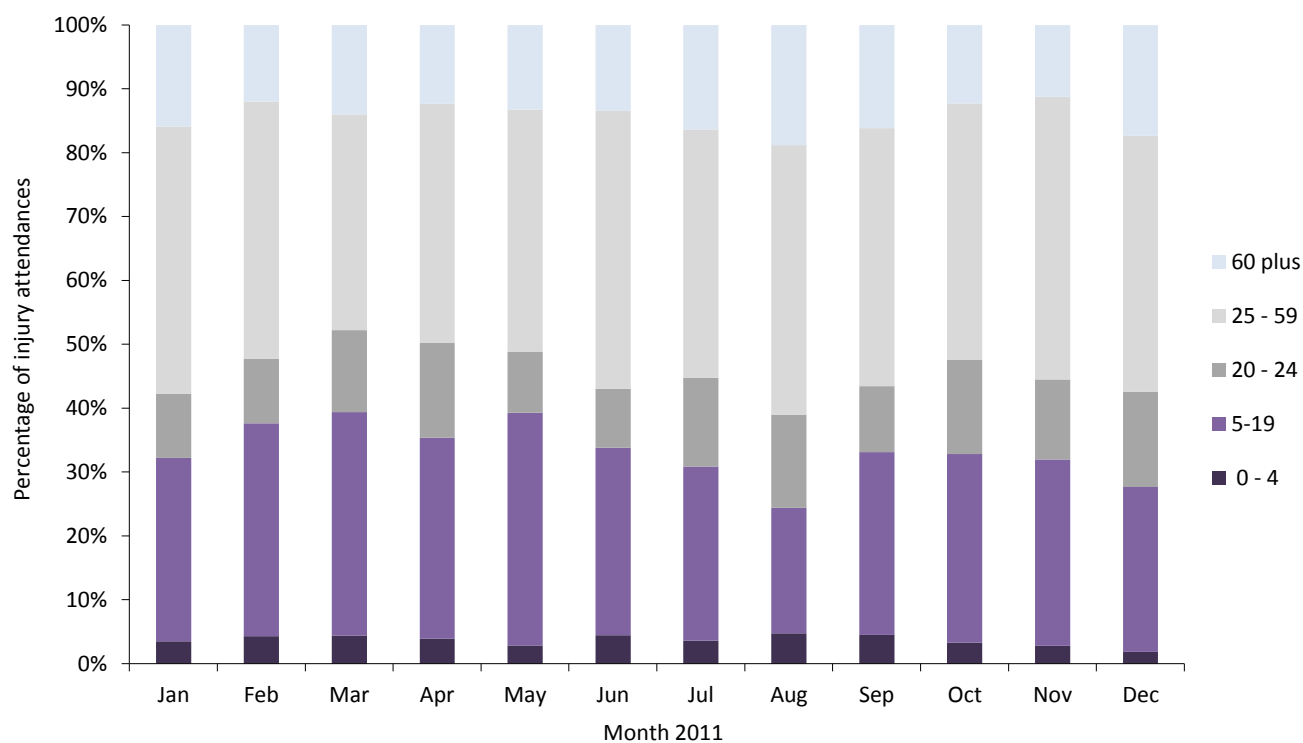


Table 1: Injury attendances by injury group and month, January to December 2011

Injury group	Jan	Feb	Mar	Apr	May	Jun	Jul	Aug	Sep	Oct	Nov	Dec	Total	%
Other injury	237	198	178	227	270	193	496	350	407	223	173	176	3128	54
Sports injury	90	113	143	139	121	111	116	87	121	149	119	60	1369	24
RTC	70	52	46	58	52	46	64	74	49	52	54	47	664	11
Assault	34	35	32	37	37	27	24	39	23	37	27	33	385	7
Deliberate self-harm (DSH)	28	19	30	25	11	25	22	19	19	20	18	13	249	4
Total	459	417	429	486	491	402	722	569	619	481	391	329	5795	100

Table 2: Injury attendances by injury group and age group, January to December 2011^{1,2}

Injury group	0 - 4		5 - 19		20 - 24		25 - 59		60 plus		Total
	N	%	N	%	N	%	N	%	N	%	
Assault	***	0	86	5	91	13	201	9	<7	1	385
DSH	***	0	54	3	45	6	143	6	<8	1	249
Other injury	191	88	722	43	272	38	1243	54	700	83	3128
RTC	14	6	154	9	94	13	339	15	63	7	664
Sports injury	12	6	682	40	213	30	391	17	71	8	1369
Total	218	100	1698	100	715	100	2317	100	847	100	5795

Table 3: Injury attendances by source of referral and month, January to December 2011³

Source of referral	Jan	Feb	Mar	Apr	May	Jun	Jul	Aug	Sep	Oct	Nov	Dec	Total	%
Self-referral	405	361	378	437	440	349	611	476	530	407	343	288	5025	87
Emergency services	24	17	20	17	13	19	63	54	46	21	13	15	322	6
Other	11	12	7	11	11	11	16	16	10	20	9	12	146	3
GP	8	<6	***	7	8	9	17	12	15	13	10	6	114	2
Police	7	9	***	10	<7	7	6	10	<6	<8	9	***	83	1
Educational establishment	***	10	15	***	12	<7	<6	***	9	12	<7	***	82	1
Work	***	***	***	***	***	***	***	***	***	***	***	***	23	0
Total	459	417	429	486	491	402	722	569	619	481	391	329	5795	100

Table 4: Injury attendances by source of referral and age group, January to December 2011

Source of referral	0 - 4		5 - 19		20 - 24		25 - 59		60 plus		Total
	N	%	N	%	N	%	N	%	N	%	
Educational establishment	***	0	79	5	***	0	0	0	***	0	82
Emergency services	6	3	38	2	45	6	109	5	124	15	322
GP	***	1	19	1	<9	1	41	2	43	5	114
Other	8	4	31	2	16	2	51	2	40	5	146
Police	0	0	<15	1	18	3	47	2	***	0	83
Self referral	200	92	1516	89	624	87	2052	89	633	75	5025
Work	0	0	***	0	***	1	17	1	***	0	23
Total	218	100	1698	100	715	100	2317	100	847	100	5795

Table 5: Injury attendances by location of incident and month, January to December 2011

Location	Jan	Feb	Mar	Apr	May	Jun	Jul	Aug	Sep	Oct	Nov	Dec	Total	%
Public place	195	175	178	239	220	165	251	208	200	216	170	144	2361	41
Home	183	140	125	162	144	149	372	266	300	151	116	99	2207	38
Other	51	42	44	40	55	41	48	68	45	44	59	39	576	10
Work	<16	27	31	27	28	28	29	<28	36	36	20	30	334	6
Educational establishment	<16	33	51	18	44	19	22	***	38	34	26	17	317	5
Total	459	417	429	486	491	402	722	569	619	481	391	329	5795	100

Table 6: Disposal method of all injury attendances by month, January to December 2011

Disposal	Jan	Feb	Mar	Apr	May	Jun	Jul	Aug	Sep	Oct	Nov	Dec	Total	%
Discharged - did not require follow-up treatment	192	209	212	255	239	208	327	262	257	211	179	159	2710	47
Discharge - follow up care by GP	73	63	71	69	64	41	143	118	104	93	83	57	979	17
Referred to fracture clinic	41	50	54	50	70	47	71	53	94	61	35	21	647	11
Admit to hospital bed	73	38	34	32	43	49	96	65	82	46	35	41	634	11
Referred to ED clinic	23	19	24	32	35	21	37	24	29	25	27	22	318	5
Referred to out-patient clinic	16	13	12	17	22	10	17	14	17	15	17	15	185	3
Left - before being treated	24	11	9	16	6	13	16	13	17	15	5	7	152	3
Refer to other health care provider	6	***	***	5	7	5	***	7	5	8	***	***	60	1
Other	***	5	***	***	***	***	***	8	6	***	***	***	39	1
Transfer to other health care provider	***	5	***	5	***	***	***	***	5	***	***	***	39	1
Left - refused treatment	***	***	***	***	***	***	***	***	***	***	***	***	<30	1
Patient died in department	***	***	***	***	***	***	***	***	***	***	***	***	***	0
Total	459	417	429	486	491	402	722	569	619	481	391	329	5795	100

Published February 2012

Johnathan Rooney (TIIG Officer)

Centre for Public Health, Liverpool John Moores University, 2nd Floor, Henry Cotton Building, Liverpool, L3 2ET

Tel: 0151 231 4513 Email: j.rooney@ljmu.ac.uk

Website: www.tiig.info (please note data requests should be made through the website)

¹ Please note percentages might not add to one hundred due to rounding.

² Please note that all numbers less than five have been suppressed in line with patient confidentiality and if there is only one number is less than five in a category then two numbers will be suppressed at the next level (e.g. <6) in order to prevent back calculations from totals.

³ GP=General practitioner.