

## North Cumbria University Hospitals NHS Trust Monthly Bulletin: July 2010 to June 2011

### Monthly Bulletin: July 2010 to June 2011

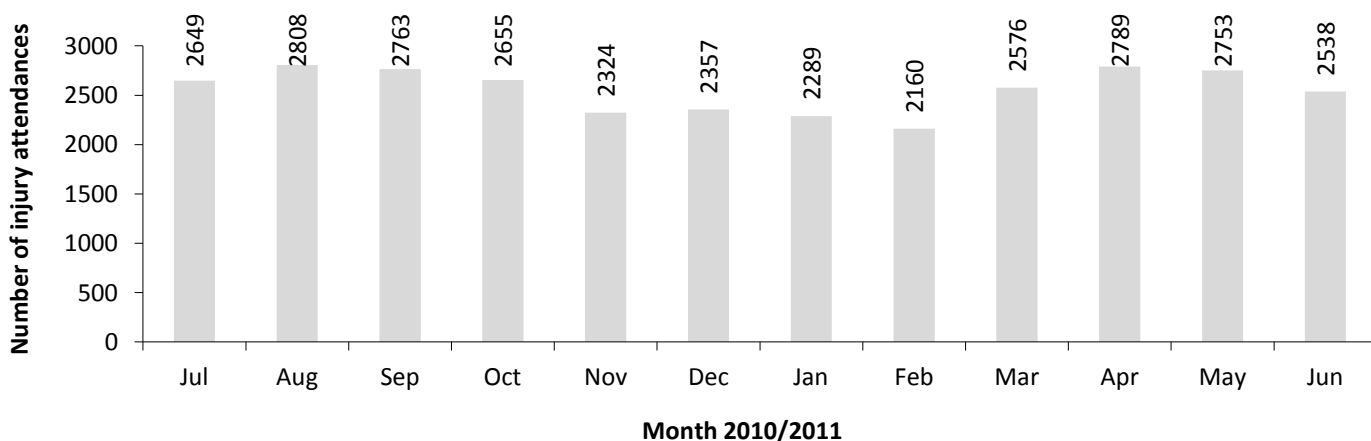
This bulletin provides a breakdown of all attendances at North Cumbria University Hospitals NHS Trust emergency departments (EDs) between July 2010 and June 2011.

Please note, in late 2009 North Cumbria University Hospitals NHS Trust EDs changed their IT system. As a result a number of the data collection fields changed, meaning certain injury categories are no

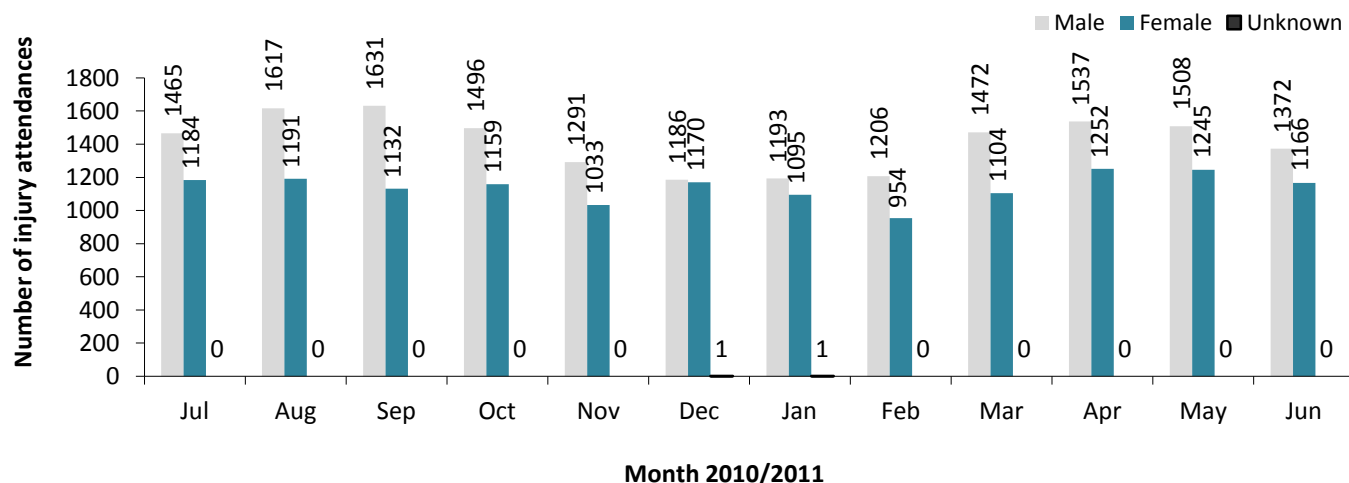
longer collected (e.g. falls). This change has led to a reduction in the number of recorded ED injury attendances, and therefore all figures presented here should be viewed with caution.

The following tables and figures provide details of these attendances by month including: total numbers; patient age and gender; injury type; referral method; incident location; and disposal.

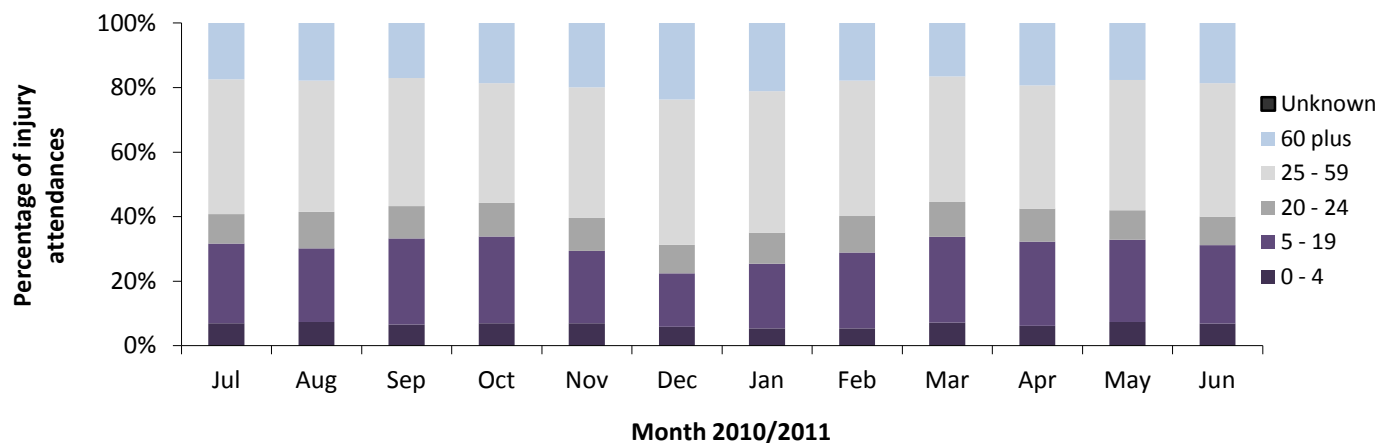
**Figure 1: Total number of ED injury attendances by month, July 2010 to June 2011**



**Figure 2: Gender of ED injury attendances by month, July 2010 to June 2011**



**Figure 3: Age group of ED injury attendances by month, July 2010 to June 2011**



**Table 1: ED injury attendances by injury group and month, July 2010 to June 2011<sup>12</sup>**

Injury group	Jul	Aug	Sep	Oct	Nov	Dec	Jan	Feb	Mar	Apr	May	Jun	Total	%
Other injury	2035	2168	2009	1929	1727	1886	1741	1550	1874	2094	2082	1918	23013	75
Sports injury	212	251	392	308	230	56	183	256	337	300	267	205	2997	10
Road traffic collision	177	135	155	159	163	190	156	139	129	160	153	159	1875	6
Assault	111	116	125	125	104	130	130	97	130	124	105	120	1417	5
Deliberate self-harm	114	138	82	134	100	95	<79	<118	106	111	146	136	<1358	4
Falls	0	0	0	0	0	0	***	***	0	0	0	0	***	0
<b>Total</b>	<b>2649</b>	<b>2808</b>	<b>2763</b>	<b>2655</b>	<b>2324</b>	<b>2357</b>	<b>2289</b>	<b>2160</b>	<b>2576</b>	<b>2789</b>	<b>2753</b>	<b>2538</b>	<b>30661</b>	<b>100</b>

**Table 2: ED injury attendances by source of referral and month, July 2010 to June 2011<sup>34</sup>**

Source of referral	Jul	Aug	Sep	Oct	Nov	Dec	Jan	Feb	Mar	Apr	May	Jun	Total	%
Self referral	1758	1913	1839	1703	1486	1503	1465	1396	1724	1872	1816	1643	20118	66
Emergency services	565	571	562	597	533	572	496	485	472	571	550	562	6536	21
GP	77	89	82	99	84	92	87	66	119	98	126	107	1126	4
Other	69	82	91	63	66	68	59	55	72	97	89	71	882	3
Work	92	80	85	70	75	56	72	61	83	61	57	57	849	3
Health care provider: same or other	53	40	41	48	29	35	41	40	34	33	53	35	482	2
Educational establishment	15	***	34	39	31	<7	46	38	40	23	39	31	344	1
Police	18	29	27	35	19	22	22	19	31	33	21	31	307	1
Local authority social services	***	***	***	***	***	***	***	***	***	***	***	***	<14	0
General Dental Practitioner	***	***	***	***	***	***	***	***	***	***	***	***	***	0
<b>Total</b>	<b>2649</b>	<b>2808</b>	<b>2763</b>	<b>2655</b>	<b>2324</b>	<b>2357</b>	<b>2289</b>	<b>2160</b>	<b>2576</b>	<b>2789</b>	<b>2753</b>	<b>2538</b>	<b>30661</b>	<b>100</b>

<sup>1</sup> Please note that all numbers less than five have been suppressed (with \*\*\*) in line with patient confidentiality; and if there is only one number less than five in a category then two numbers will be suppressed to prevent back calculations from totals.

<sup>2</sup> Due to a change in IT system at North Cumbria EDs, industrial and domestic injury group data are not collected from November 2009.

<sup>3</sup> Please note percentages might not add to one hundred due to rounding.

<sup>4</sup> GP=general practitioner.

**Table 3: ED injury attendances by location of incident and month, July 2010 to June 2011<sup>5</sup>**

Location	Jul	Aug	Sep	Oct	Nov	Dec	Jan	Feb	Mar	Apr	May	Jun	Total	%
Home	1129	1230	1130	1109	1006	958	998	913	1119	1259	1225	1075	13151	43
Other	989	1183	1172	1047	874	988	895	857	975	1131	1053	1044	12208	40
Public place	278	246	222	203	187	251	157	168	171	250	251	202	2586	8
Work	182	<147	126	155	140	105	104	107	143	<100	119	109	1535	5
Educational establishment	71	***	113	141	117	55	135	115	168	<51	105	108	1181	4
<b>Total</b>	<b>2649</b>	<b>2808</b>	<b>2763</b>	<b>2655</b>	<b>2324</b>	<b>2357</b>	<b>2289</b>	<b>2160</b>	<b>2576</b>	<b>2789</b>	<b>2753</b>	<b>2538</b>	<b>30661</b>	<b>100</b>

**Table 4: ED injury attendances by disposal and month, July 2010 to June 2011**

Disposal	Jul	Aug	Sep	Oct	Nov	Dec	Jan	Feb	Mar	Apr	May	Jun	Total	%
Discharged - no follow-up treatment	1573	1632	1644	1584	1381	1153	1160	1072	1362	1506	1442	1276	16785	55
Referred to other out-patient clinic	350	368	407	392	332	461	354	341	413	449	456	381	4704	15
Admitted to hospital bed of the same health care provider	279	355	316	320	275	339	293	292	285	352	359	360	3825	12
Discharged - follow-up treatment by GP	193	156	126	95	102	177	247	246	256	199	208	239	2244	7
Referred to ED clinic	119	126	134	100	121	96	96	96	120	107	138	112	1365	4
Left department before being treated	64	71	89	79	42	67	64	45	65	82	67	81	816	3
Referred to other health care professional	47	61	31	54	39	41	42	39	44	68	56	52	574	2
Transferred to other health care provider	14	20	11	20	14	10	21	16	11	14	9	15	175	1
Left department having refused treatment	7	5	***	5	<8	***	8	7	12	10	13	9	89	0
Other	***	<14	***	<6	10	6	***	<6	<8	***	<6	<12	73	0
Died in department	***	***	0	***	***	***	***	***	***	***	***	***	11	0
<b>Total</b>	<b>2649</b>	<b>2808</b>	<b>2763</b>	<b>2655</b>	<b>2324</b>	<b>2357</b>	<b>2289</b>	<b>2160</b>	<b>2576</b>	<b>2789</b>	<b>2753</b>	<b>2538</b>	<b>30661</b>	<b>100</b>

Published October 2011

Johnathan Rooney (TIIG Officer)

Centre for Public Health, Liverpool John Moores University, 2nd Floor, Henry Cotton Campus, Liverpool, L3 2ET

Tel: 0151 231 4513 Email: [j.rooney@ljmu.ac.uk](mailto:j.rooney@ljmu.ac.uk)Website: [www.tiig.info](http://www.tiig.info) (please note data requests should be made through the website)

<sup>5</sup> Educational establishment includes: educational establishment; school other; school; school playground; and, school sport. 'Public place' includes public place and playing out.