

## North Cumbria University Hospitals NHS Trust Monthly Bulletin: January to December 2011

### Monthly Bulletin: January to December 2011

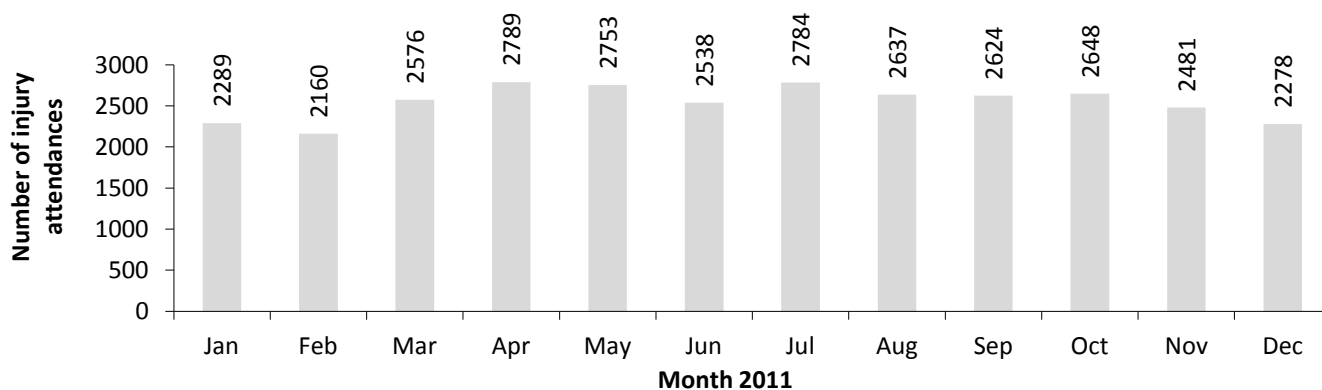
This bulletin provides a breakdown of all attendances at North Cumbria University Hospitals NHS Trust emergency departments (EDs) between January and December 2011.

Please note, in late 2009 North Cumbria University Hospitals NHS Trust EDs changed their IT system. As a result a number of the data collection fields changed, meaning certain injury categories are no

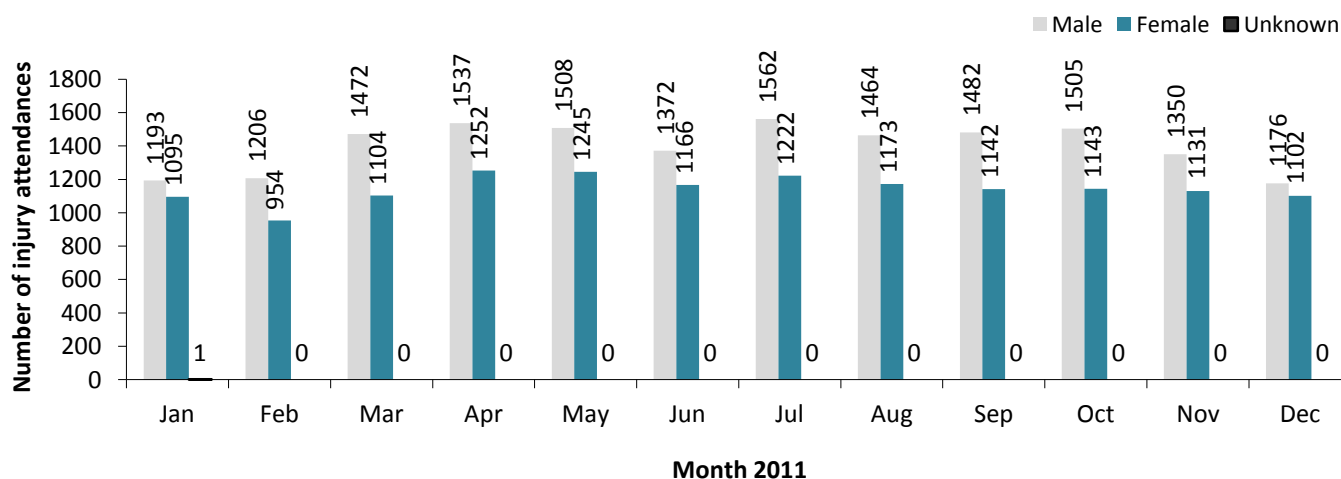
longer collected (e.g. falls). This change has led to a reduction in the number of recorded ED injury attendances, and therefore all figures presented here should be viewed with caution.

The following tables and figures provide details of these attendances by month including: total numbers; patient age and gender; injury type; referral method; incident location; and disposal.

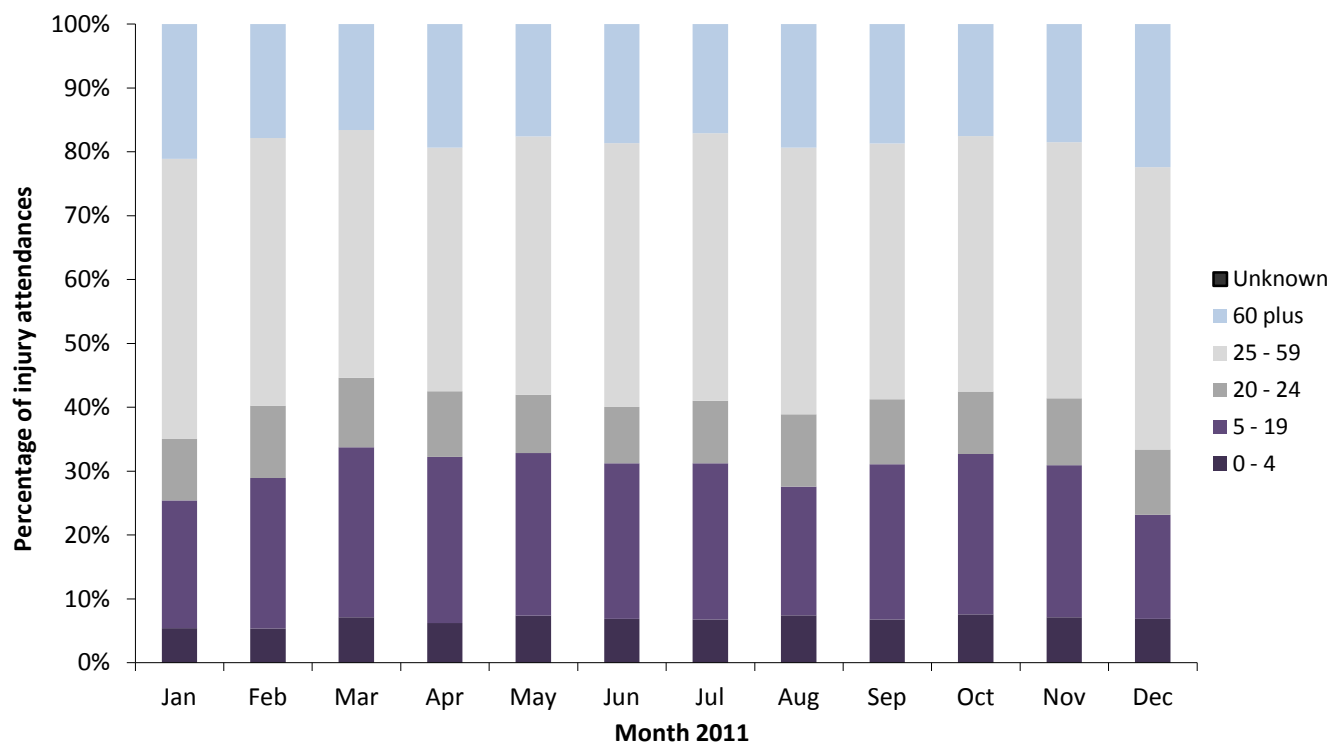
**Figure 1: Total number of ED injury attendances by month, January to December 2011**



**Figure 2: Gender of ED injury attendances by month, January to December 2011**



**Figure 3: Age group of ED injury attendances by month, January to December 2011**



**Table 1: ED injury attendances by injury group and month, January to December 2011<sup>1,2</sup>**

Injury group	Jan	Feb	Mar	Apr	May	Jun	Jul	Aug	Sep	Oct	Nov	Dec	Total	%
Other injury	1742	1551	1874	2094	2082	1918	2215	1994	1894	1950	1802	1738	22854	75
Sports injury	183	256	337	300	267	205	189	184	322	289	271	90	2893	9
Road traffic collision	156	139	129	160	153	159	120	176	180	163	167	202	1904	6
Deliberate self-harm	78	117	106	111	146	136	128	134	121	129	123	134	1463	5
Assault	130	97	130	124	105	120	132	149	107	117	118	114	1443	5
<b>Total</b>	<b>2289</b>	<b>2160</b>	<b>2576</b>	<b>2789</b>	<b>2753</b>	<b>2538</b>	<b>2784</b>	<b>2637</b>	<b>2624</b>	<b>2648</b>	<b>2481</b>	<b>2278</b>	<b>30557</b>	<b>100</b>

**Table 2: ED injury attendances by source of referral and month, January to December 2011<sup>3,4,5</sup>**

Source of referral	Jan	Feb	Mar	Apr	May	Jun	Jul	Aug	Sep	Oct	Nov	Dec	Total	%
Self referral	1465	1396	1724	1872	1816	1643	1827	1717	1697	1711	1561	1378	19807	65
Emergency services	496	485	472	571	550	562	562	570	561	604	546	608	6587	22
GP	87	66	119	98	126	107	96	106	95	85	104	91	1180	4
Other	59	55	72	97	89	71	90	94	66	62	74	66	895	3
Work	72	61	83	61	57	57	81	75	103	82	83	58	873	3
Health care provider: same or other	41	40	34	33	53	35	60	48	58	35	49	36	522	2
Educational establishment	46	38	40	23	39	31	30	***	25	35	40	<14	360	1
Police	22	19	31	33	21	31	36	27	18	33	23	28	322	1
Local authority social services	***	***	***	***	***	***	***	***	***	***	***	***	<11	0
General dental practitioner	***	***	***	***	***	***	***	***	***	***	***	***	***	0
<b>Total</b>	<b>2289</b>	<b>2160</b>	<b>2576</b>	<b>2789</b>	<b>2753</b>	<b>2538</b>	<b>2784</b>	<b>2637</b>	<b>2624</b>	<b>2648</b>	<b>2481</b>	<b>2278</b>	<b>30557</b>	<b>100</b>

<sup>1</sup> Due to a change in IT system at North Cumbria EDs, industrial and domestic injury group data are not collected from November 2009.

<sup>2</sup> Due to low numbers (n<5) falls attendances have been categorised under other injury.

<sup>3</sup> Please note percentages might not add to one hundred due to rounding.

<sup>4</sup> GP=general practitioner.

<sup>5</sup> Please note that all numbers less than five have been suppressed (with \*\*\*) in line with patient confidentiality; and if there is only one number less than five in a category then two numbers will be suppressed to prevent back calculations from totals.

**Table 3: ED injury attendances by location of incident and month, January to December 2011<sup>6</sup>**

Location	Jan	Feb	Mar	Apr	May	Jun	Jul	Aug	Sep	Oct	Nov	Dec	Total	%
Home	998	913	1119	1259	1225	1075	1197	1137	1084	1065	1085	1113	13270	43
Other	895	857	975	1131	1053	1044	1084	1104	1073	1073	946	836	12071	40
Public place	157	168	171	250	251	202	252	254	223	257	178	160	2523	8
Work	104	107	143	99	119	109	152	137	125	128	134	112	1469	5
Educational establishment	135	115	168	50	105	108	99	5	119	125	138	57	1224	4
<b>Total</b>	<b>2289</b>	<b>2160</b>	<b>2576</b>	<b>2789</b>	<b>2753</b>	<b>2538</b>	<b>2784</b>	<b>2637</b>	<b>2624</b>	<b>2648</b>	<b>2481</b>	<b>2278</b>	<b>30557</b>	<b>100</b>

**Table 4: ED injury attendances by disposal and month, January to December 2011**

Disposal	Jan	Feb	Mar	Apr	May	Jun	Jul	Aug	Sep	Oct	Nov	Dec	Total	%
Discharged - no follow-up treatment	1160	1072	1362	1506	1442	1276	1480	1505	1690	1618	1455	1264	16830	55
Referred to other out-patient clinic	354	341	413	449	456	381	444	339	303	341	335	318	4474	15
Admitted to hospital bed of the same health care provider	293	292	285	352	359	360	333	329	316	342	302	334	3897	13
Discharged - follow-up treatment by GP	247	246	256	199	208	239	218	91	83	100	147	162	2196	7
Referred to ED clinic	96	96	120	107	138	112	129	203	121	107	121	88	1438	5
Left department before being treated	64	45	65	82	67	81	68	77	46	50	48	38	731	2
Referred to other health care professional	42	39	44	68	56	52	67	67	36	51	45	37	604	2
Transferred to other health care provider	21	16	11	14	9	15	22	16	17	14	17	20	192	1
Left department having refused treatment	8	7	12	10	13	9	14	5	5	18	6	11	118	0
Other	***	<6	<8	***	<6	<12	<10	***	<7	<7	<6	<6	<69	0
Died in department	***	***	***	***	***	***	***	***	***	***	***	***	<10	0
<b>Total</b>	<b>2289</b>	<b>2160</b>	<b>2576</b>	<b>2789</b>	<b>2753</b>	<b>2538</b>	<b>2784</b>	<b>2637</b>	<b>2624</b>	<b>2648</b>	<b>2481</b>	<b>2278</b>	<b>30557</b>	<b>100</b>

Published February 2012  
 Johnathan Rooney (TIIG Officer)  
 Centre for Public Health, Liverpool John Moores University, 2nd Floor, Henry Cotton Campus, Liverpool, L3 2ET  
 Tel: 0151 231 4513 Email: j.rooney@ljmu.ac.uk  
 Website: [www.tiig.info](http://www.tiig.info) (please note data requests should be made through the website)

<sup>6</sup> Educational establishment includes: educational establishment; school other; school; school playground; and, school sport. Public place includes public place and playing out.