

# Trauma and Injury Intelligence Group Biannual Bulletin

West Cumberland Hospital Emergency Department  
April 2014 to March 2015

July 2015



Centre for Public Health,  
Faculty of Education, Health and Community,  
Liverpool John Moores University,  
Henry Cotton Campus,  
15-21 Webster Street,  
Liverpool, L3 2ET

[cph.org.uk](http://cph.org.uk)

0151 231 4500

[tiig@ljmu.ac.uk](mailto:tiig@ljmu.ac.uk)

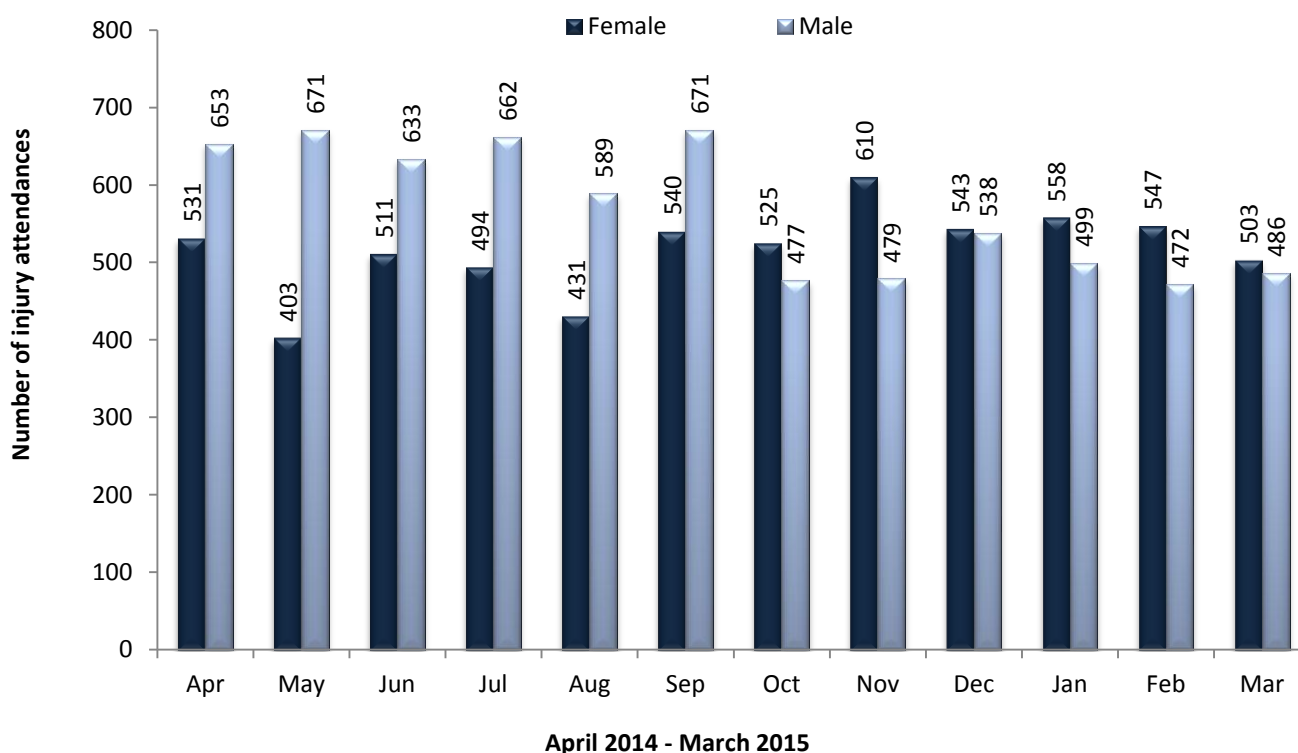
[tiig.info](http://tiig.info)

[twitter.com/tiig\\_cph](https://twitter.com/tiig_cph)

## ALL INJURY ATTENDANCES

This bulletin provides a breakdown of all injury attendances to West Cumberland Hospital Emergency Department (ED) between April 2014 and March 2015. In this twelve month period there were 12,880 injury attendances to the ED. The month with the highest number of attendances, calculated as a daily average, was May 2014 (41 per day) while October 2014 and March 2015, had the fewest (30 each per day; figure 1).

**Figure 1: ED attendances by gender and month, April 2014 to March 2015**



There were more male (53%) than female attendances to the ED in 2014/15 (n=6,830; figure 1). Just under one-third (31%) were aged between 30 and 59 years (n=3,998), 25% were aged between 15 and 29 years (n=3,243) and 23% were aged 60 years and above (n=2,981; figure 2).

**Figure 2: ED attendances by age group and month, April 2014 to March 2015**

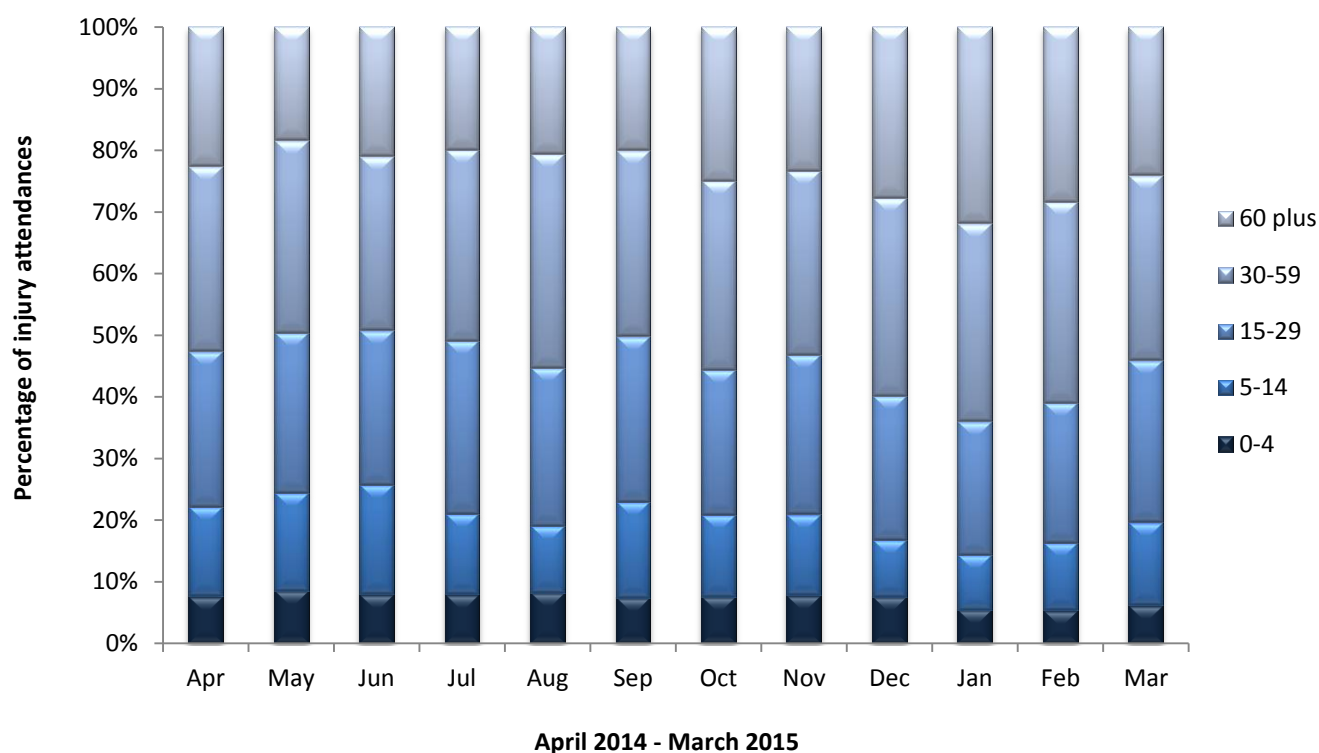


Table 1 shows the injury group of attendances between April 2014 and March 2015. Three-quarters (75%) of attendances were categorised as ‘other’ injuries (n=9,654). Sports injuries accounted for just over one in ten (11%; n=1,435) injuries, while 6% of injuries were road traffic collisions (n=782). Five per cent of injuries were caused by deliberate self-harm (n=619) and 3% were assaults (n=390).

**Table 1: ED attendances by injury group and month, April 2014 to March 2015**

Injury group	Apr	May	Jun	Jul	Aug	Sep	Oct	Nov	Dec	Jan	Feb	Mar	Total	%
<b>Other injury</b>	870	965	902	933	855	857	649	704	826	758	654	681	9654	75%
<b>Sports injury</b>	158	150	129	114	116	159	114	114	69	80	100	132	1435	11%
<b>Road traffic collision</b>	62	62	64	79	66	73	71	61	63	57	72	52	782	6%
<b>Deliberate self-harm</b>	52	65	46	65	63	43	61	47	47	44	42	44	619	5%
<b>Assault</b>	36	39	35	29	36	42	22	37	39	26	21	28	390	3%
<b>Total</b>	1178	1281	1176	1220	1136	1174	917	963	1044	965	889	937	12880	100%

The referral source to the ED is displayed in table 2. Over three-fifths (64%) of attendees were self-referred (n=8,291) while just under one-fifth (19%) were referred by the emergency services (n=2,385).

**Table 2: ED attendances by referral source and month, April 2014 to March 2015<sup>1</sup>**

Referral source	Apr	May	Jun	Jul	Aug	Sep	Oct	Nov	Dec	Jan	Feb	Mar	Total	%
Self-referral	773	867	770	804	760	808	554	603	669	534	522	627	8291	64%
Emergency services	222	196	201	218	225	179	165	195	223	202	197	162	2385	19%
General medical practitioner	76	84	95	73	70	65	114	78	66	130	93	68	1012	8%
Work	28	46	23	47	25	41	24	32	22	32	20	23	363	3%
Other	35	31	28	37	31	34	19	25	17	21	17	16	311	2%
Educational establishment	16	25	21	12	0	22	23	13	23	25	15	17	212	2%
Health care provider	20	19	25	13	18	16	10	11	12	13	15	17	189	1%
Police	8	13	13	16	7	9	8	6	12	8	10	7	117	1%
<b>Total</b>	<b>1178</b>	<b>1281</b>	<b>1176</b>	<b>1220</b>	<b>1136</b>	<b>1174</b>	<b>917</b>	<b>963</b>	<b>1044</b>	<b>965</b>	<b>889</b>	<b>937</b>	<b>12880</b>	<b>100%</b>

Table 3 displays the incident location; forty five per cent of injuries occurred in the home (n=5,842), while 43% occurred in 'other' locations (n=5,532).

**Table 3: ED attendances by incident location and month, April 2014 to March 2015<sup>2</sup>**

Incident location	Apr	May	Jun	Jul	Aug	Sep	Oct	Nov	Dec	Jan	Feb	Mar	Total	%
Home	527	568	514	524	492	474	423	438	538	500	437	407	5842	45%
Other	513	541	505	527	551	533	393	386	393	362	372	456	5532	43%
Public place	58	80	65	90	<45	<65	30	51	28	12	18	7	538	4%
Educational establishment	38	51	48	31	***	<50	45	51	46	53	30	50	499	4%
Work	42	41	44	48	54	51	26	37	39	38	32	17	469	4%
<b>Total</b>	<b>1178</b>	<b>1281</b>	<b>1176</b>	<b>1220</b>	<b>1136</b>	<b>1174</b>	<b>917</b>	<b>963</b>	<b>1044</b>	<b>965</b>	<b>889</b>	<b>937</b>	<b>12880</b>	<b>100%</b>

The discharge destination for ED attendances is displayed in table 4. Over half (55%) of attendees were discharged from hospital with no follow-up treatment required (n=7,028). Fifteen per cent were admitted to hospital (n=1,902) and 14% were referred to an outpatient clinic (n=1,773).

<sup>1</sup> 'Other' includes general dental practitioner and other.

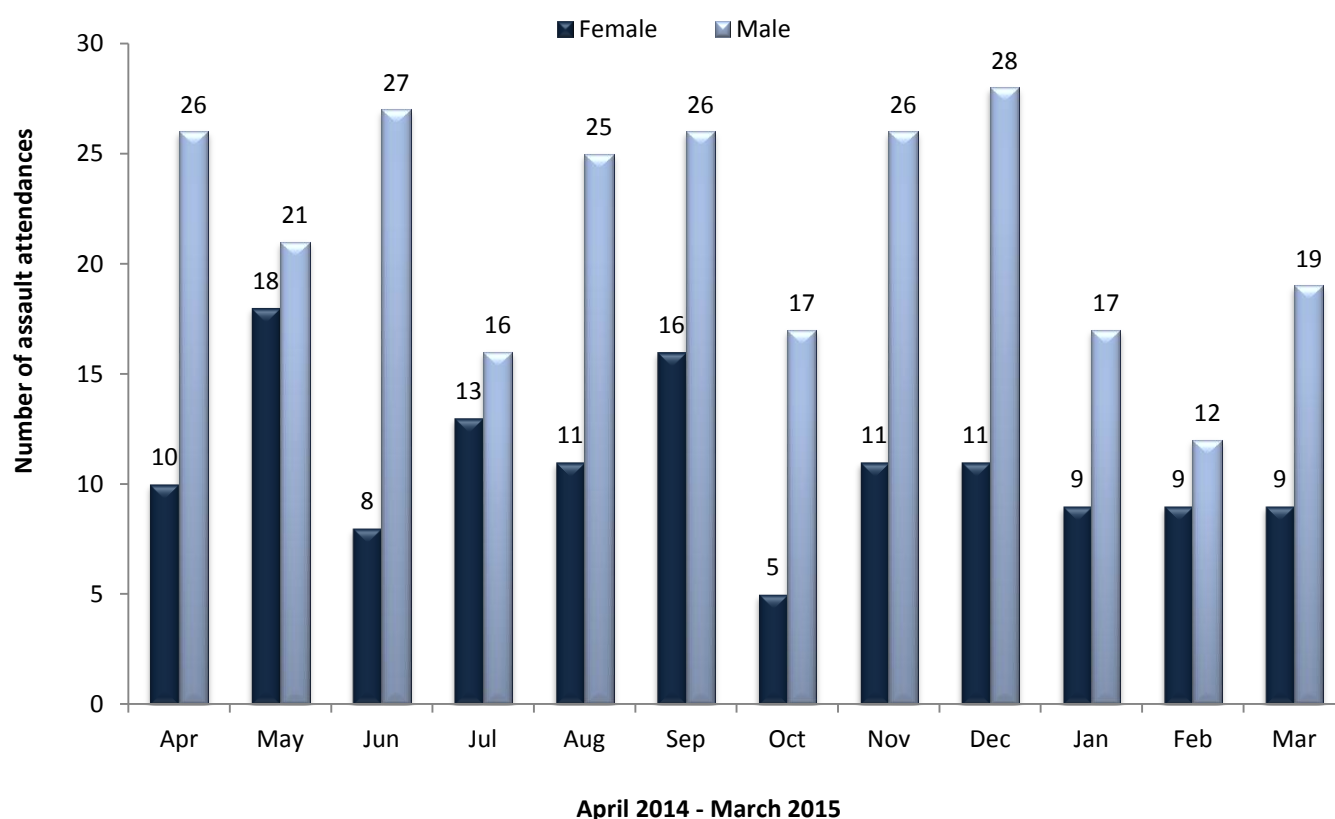
<sup>2</sup> Please note that all numbers less than five have been suppressed (\*\*\*) in line with patient confidentiality. If there is only one number less than five in a category then two numbers have been suppressed to prevent back calculations from totals.

**Table 4: ED attendances by discharge destination and month, April 2014 to March 2015<sup>2,3</sup>**

Discharge destination	Apr	May	Jun	Jul	Aug	Sep	Oct	Nov	Dec	Jan	Feb	Mar	Total	%
Discharged - no follow-up	643	683	629	648	626	681	490	559	597	522	470	480	7028	55%
Admitted to hospital	167	148	172	150	150	122	171	137	161	209	161	154	1902	15%
Outpatient clinic	174	195	163	181	170	189	101	124	129	113	121	113	1773	14%
Discharged - follow-up care by GP	93	113	102	118	75	66	74	50	40	34	43	72	880	7%
Referred to ED clinic	42	47	45	35	36	56	32	34	43	26	42	48	486	4%
Referred to other health care professional	24	33	19	35	23	27	31	23	25	25	19	19	303	2%
Other	11	18	17	21	23	13	7	16	25	22	15	22	210	2%
Left department before being treated	13	32	22	24	17	12	6	10	<15	<15	<15	<20	190	1%
Transferred to other HCP	<10	<15	7	8	16	8	***	10	10	***	5	9	98	1%
Left department having refused treatment	***	***	0	0	0	0	***	0	***	0	***	***	8	0%
<b>Total</b>	<b>1178</b>	<b>1281</b>	<b>1176</b>	<b>1220</b>	<b>1136</b>	<b>1174</b>	<b>917</b>	<b>963</b>	<b>1044</b>	<b>965</b>	<b>889</b>	<b>937</b>	<b>12880</b>	<b>100%</b>

Between April 2014 and March 2015 there were 390 assault attendances to West Cumberland Hospital ED. The month with the highest number was September 2014 with 42 assault attendances (figure 3).

**Figure 3: ED assault attendances by gender and month, April 2014 to March 2015**



<sup>3</sup> GP = General practitioner; HCP = Health care provider

## ASSAULT ATTENDANCES

Just over two-thirds (67%) of attendees presenting to the ED with assault-related injuries were male (n=260; figure 3). Fifty-one per cent were aged between 15 and 29 years (n=197) while 43% were aged between 30 and 59 years (n=168; table 5).

**Table 5: ED assault attendances by age group and month, April 2014 to March 2015<sup>2</sup>**

Age group	Apr	May	Jun	Jul	Aug	Sep	Oct	Nov	Dec	Jan	Feb	Mar	Total	%
5-14	0	***	***	***	***	***	***	***	***	***	0	***	16	4%
15-29	19	20	17	13	14	24	10	24	21	<20	<10	14	197	51%
30-59	17	<20	16	14	20	14	<10	11	<20	12	12	10	168	43%
60 plus	0	0	***	***	***	***	0	***	0	0	***	***	9	2%
<b>Total</b>	<b>36</b>	<b>39</b>	<b>35</b>	<b>29</b>	<b>36</b>	<b>42</b>	<b>22</b>	<b>37</b>	<b>39</b>	<b>26</b>	<b>21</b>	<b>28</b>	<b>390</b>	<b>100%</b>

The assault location is shown in table 6; over seven in ten (72%) incidents were recorded as 'other' location (n=280), 13% occurred in the home (n=50) and 11% occurred in a public place (n=42).

**Table 6: ED assault attendances by incident location and month, April 2014 to March 2015** Error! Bookmark not defined.

Incident location	Apr	May	Jun	Jul	Aug	Sep	Oct	Nov	Dec	Jan	Feb	Mar	Total	%
Other	26	23	27	22	29	26	17	29	28	15	17	21	280	72%
Home	5	8	***	***	***	9	***	***	***	***	***	***	50	13%
Public place	5	8	***	***	***	***	***	***	5	***	***	0	42	11%
Educational establishment	0	0	***	***	0	0	***	***	***	***	0	***	12	3%
Work	0	0	***	0	0	***	0	0	***	***	0	0	6	2%
<b>Total</b>	<b>36</b>	<b>39</b>	<b>35</b>	<b>29</b>	<b>36</b>	<b>42</b>	<b>22</b>	<b>37</b>	<b>39</b>	<b>26</b>	<b>21</b>	<b>28</b>	<b>390</b>	<b>100%</b>

Table 7 displays the disposal method of assault attendances. Just under two-thirds (64%) were discharged from the ED with no follow-up treatment required (n=250), just over one in five (21%) required follow-up treatment (n=80), 10% who discharged via 'other' disposals (n=38) and 6% were admitted to hospital (n=22).

**Table 7: ED assault attendances by disposal method and month, April 2014 to March 2015<sup>2</sup>**

Disposal	Apr	May	Jun	Jul	Aug	Sep	Oct	Nov	Dec	Jan	Feb	Mar	Total	%
Discharged	25	30	22	18	24	19	12	22	32	17	12	17	250	64%
Follow-up	***	***	9	<10	<10	16	5	12	***	5	***	6	80	21%
Other	***	5	***	0	6	<10	***	***	***	***	***	***	38	10%
Admitted	***	***	***	***	***	***	***	***	***	***	***	***	22	6%
<b>Total</b>	<b>36</b>	<b>39</b>	<b>35</b>	<b>29</b>	<b>36</b>	<b>42</b>	<b>22</b>	<b>37</b>	<b>39</b>	<b>26</b>	<b>21</b>	<b>28</b>	<b>390</b>	<b>100%</b>