

Injury attendances to Fairfield General Hospital Emergency Department

April 2009 to March 2010

This report summarises recorded injury attendances to Fairfield General Hospital Emergency Department (ED) between April 2009 and March 2010.

Between April 2009 and March 2010 there were 21,665 injury attendances to Fairfield General Hospital ED. Males accounted for just over half (n=11,633; 54%) of all attendances. The month with the highest injury attendances was March (n=1,978) with August (n=1,597) having the lowest (**Figure 1**). Over two-thirds of injury attendances were recorded as other injury (n=14,758; 68%). Of the specified injury groups, falls (n=3,810; 18%) accounted for the highest proportion followed by road traffic collisions (RTCs) (n=1,106; 5%) and assault (n=933; 4%) (**Table 1**).

For all injury attendances, the highest proportions were for persons aged 5 to 19 (25%) and 20 to 34 (22%) (**Figure 2**). Half (50%) of fall attendees were aged 65 or over. Nearly half (46%) of assault attendees were aged 20 to 34. Nearly two fifths (39%) of RTC attendees and deliberate self-harm attendees (39%) were aged 20 to 34. (**Figure 3**).

Table 2 shows the location of injury attendances. Over two-fifths (43%) of injuries occurred in the home. Over one in six (17%) of injuries occurred in a public place with smaller proportions occurring at work (6%) or at an educational establishment (5%). Over half (51%) of assaults occurred in a public place.

Over three-quarters (78%) of DSH injuries occurred at home. Over half (56%) of falls occurred in the home.

Table 3 shows the ethnicity of attendees to Fairfield General Hospital ED. Almost nine in ten (87%) were white and 4% were Pakistani.

The disposal of a patient can give an indication of the severity of the injuries sustained. Most (63%) attendees were discharged, a quarter (25%) were referred and 9% were admitted (**Table 4**). Three-quarters (75%) of RTC attendees were discharged while 6% were admitted to hospital. A quarter (26%) of fall attendees were admitted and nearly half (44%) of burn/scald attendees had a referral/follow-up (**Table 5**).

Table 6 shows the arrival methods of injury attendances at Fairfield General Hospital ED. Over two-thirds (67%) arrived by private transport while a fifth (20%) arrived by ambulance.

Figure 4 (a-d) shows crude rates of injury attendance at Fairfield General Hospital ED by attendee's area of residence, in this case Middle Super Output Area (MSOA). The MSOAs with the highest crude rates are indicated beneath each figure.¹

¹ Population figures are drawn from mid-2008 population estimates from the Office for National Statistics.

Figure 1: Fairfield General Hospital ED: Total injury attendances by gender and month, April 2009 to March 2010

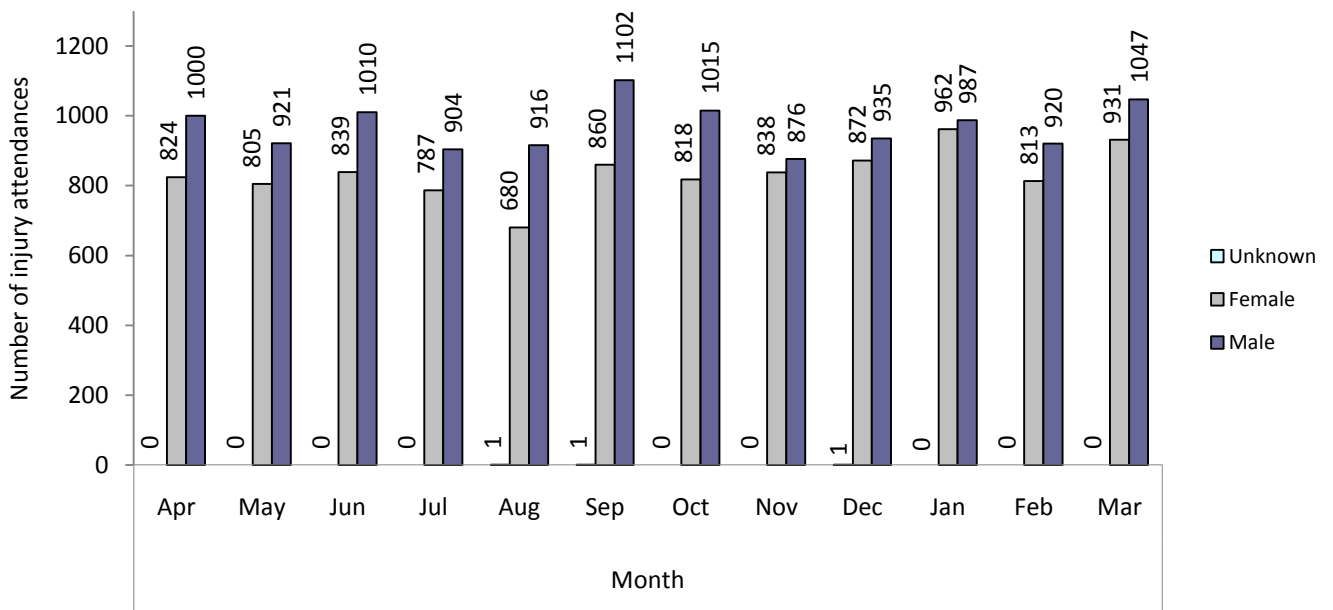


Table 1: Fairfield General Hospital ED: Total injury attendances by injury group and month, April 2009 to March 2010

Injury group	Apr	May	Jun	Jul	Aug	Sep	Oct	Nov	Dec	Jan	Feb	Mar	Total	%
Other injury	1190	1119	1294	1121	1095	1363	1312	1182	1162	1284	1184	1452	14758	68
Fall	383	332	298	292	253	319	254	282	390	412	324	271	3810	18
RTC	77	81	50	74	75	107	121	105	97	112	95	112	1106	5
Assault	88	109	85	87	71	65	77	61	75	85	62	68	933	4
Burns & scalds	40	38	65	42	40	44	35	47	53	34	45	47	530	2
Bites & stings	32	28	49	58	57	49	19	20	16	11	12	15	366	2
DSH	14	19	8	17	6	16	15	17	15	11	11	13	162	1
Total	1824	1726	1849	1691	1597	1963	1833	1714	1808	1949	1733	1978	21665	100

Figure 2: Fairfield General Hospital ED: Total injury attendances by age group and month, April 2009 to March 2010

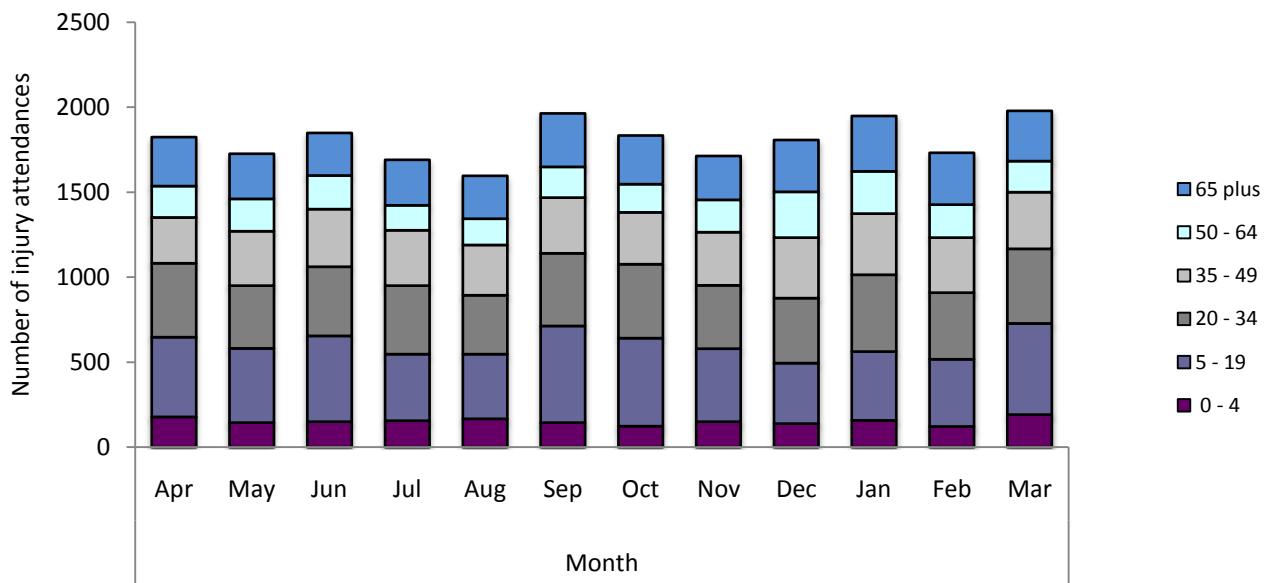


Figure 3: Fairfield General Hospital ED: Total injury attendances by age group and injury group, April 2009 to March 2010 (excluding other injury)

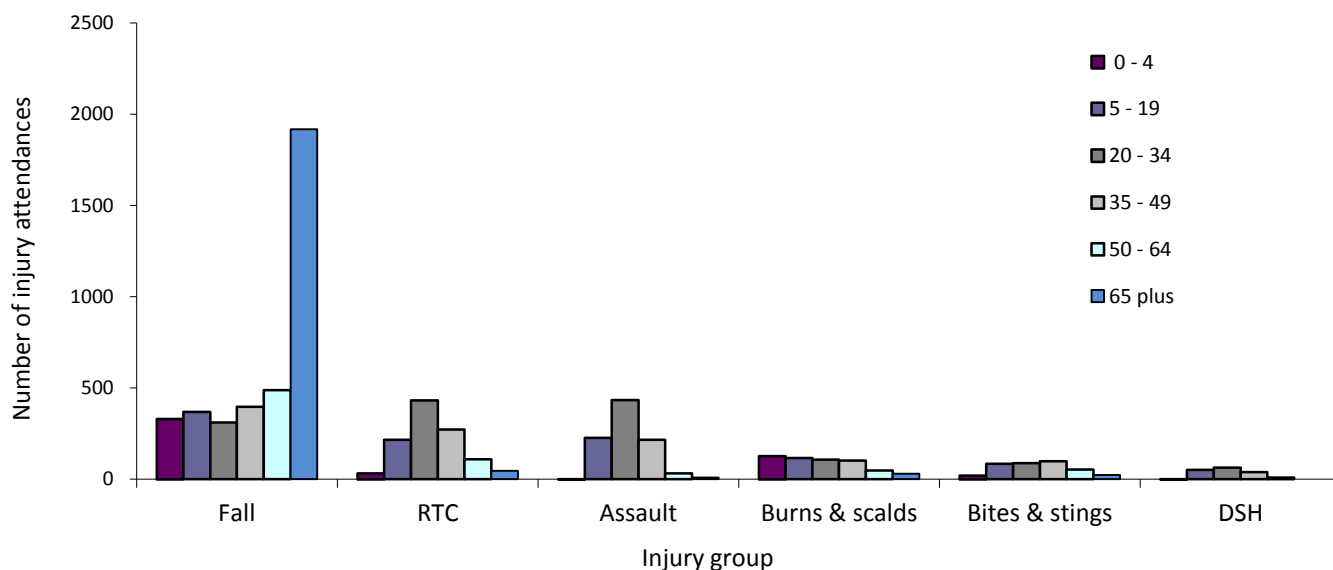


Table 2: Fairfield General Hospital ED: Total injury attendances by location of incident and injury group, April 2009 to March 2010²

Location	Assault		Bites & stings		Burns & scalds		DSH		Fall		Other injury		RTC		Total	
	n	%	n	%	n	%	n	%	n	%	n	%	n	%	n	%
Home	210	23	163	45	256	48	126	78	2145	56	6448	44	10	1	9358	43
Other	201	22	85	23	190	36	23	14	769	20	3907	26	984	89	6159	28
Public Place	479	51	91	25	13	2	13	8	734	19	2253	15	108	10	3691	17
Work	37	4	**	**	65	12	**	**	91	2	1165	8	**	**	1386	6
Educational establishment	6	1	**	**	6	1	**	**	71	2	985	7	**	**	1071	5
Total	933	100	366	100	530	100	162	100	3810	100	14758	100	1106	100	21665	100

Table 3: Fairfield General Hospital ED: Total injury attendances by ethnicity and month, April 2009 to March 2010³

Ethnicity	Apr	May	Jun	Jul	Aug	Sep	Oct	Nov	Dec	Jan	Feb	Mar	Total	%
White	1583	1479	1600	1435	1366	1705	1597	1489	1564	1716	1540	1730	18804	87
Not known	77	105	90	97	75	96	81	83	90	78	61	80	1013	5
Pakistani	78	61	80	77	82	82	60	59	86	72	66	81	884	4
Other ethnic group	41	45	41	32	30	38	40	33	32	38	33	30	433	2
Any other Asian background	13	7	14	15	14	19	23	13	14	15	10	24	181	1
Black	11	9	12	14	8	9	16	14	4	14	10	12	133	1
Mixed	14	9	7	8	10	6	10	14	10	6	9	10	113	1
Indian	**	**	**	7	8	**	**	**	**	**	**	**	45	0
Bangladeshi	**	6	**	**	**	**	**	**	**	6	**	5	36	0
Chinese	**	**	**	**	**	**	**	**	**	**	**	**	23	0
Total	1824	1726	1849	1691	1597	1963	1833	1714	1808	1949	1733	1978	21665	100

² Please note that all numbers less than five have been suppressed (***) in line with patient confidentiality and if there is only one number less than five in a category then two numbers will be suppressed at the next level.

³ White = Irish, British, other white background; Mixed = white and black, white and Asian, mixed any other; Other = any other ethnic group, any other Asian background; Black = African, Caribbean, other black.

Table 4: Fairfield General Hospital ED: Total injury attendances by method of disposal and month, April 2009 to March 2010⁴

Disposal	Apr	May	Jun	Jul	Aug	Sep	Oct	Nov	Dec	Jan	Feb	Mar	Total	%
Discharged	1166	1171	1236	1078	1087	1141	1156	1051	1114	1216	1021	1254	13691	63
Referred	418	365	431	393	341	574	470	472	459	521	490	552	5486	25
Admitted	178	148	133	156	140	187	159	141	192	177	169	154	1934	9
Other	62	42	49	64	29	61	48	50	43	35	53	18	554	3
Total	1824	1726	1849	1691	1597	1963	1833	1714	1808	1949	1733	1978	21665	100

Table 5: Fairfield General Hospital ED: Total injury attendances by method of disposal and injury group, April 2009 to March 2010

Disposal	Assault		Bites & stings		Burns & scalds		DSH		Fall		Other injury		RTC		Total	
	n	%	n	%	n	%	n	%	n	%	n	%	n	%	n	%
Discharged	533	57	247	67	221	42	64	40	1911	50	9882	67	833	75	13691	63
Referral/ follow-up	191	20	101	28	232	44	30	19	769	20	3972	27	191	17	5486	25
Admitted	114	12	**	**	**	**	40	25	1004	26	674	5	66	6	1934	9
Other	95	10	**	**	**	**	28	17	126	3	230	2	16	1	554	3
Total	933	100	366	100	530	100	162	100	3810	100	14758	100	1106	100	21665	100

Table 6: Fairfield General Hospital ED: Total injury attendances by mode of arrival and month, April 2009 to March 2010

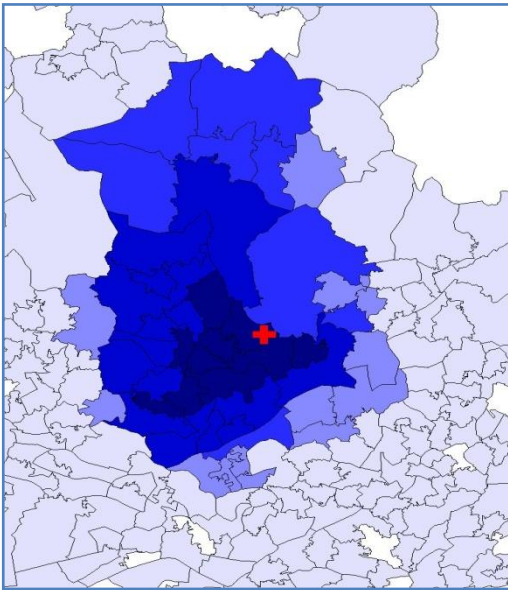
Arrival mode	Apr	May	Jun	Jul	Aug	Sep	Oct	Nov	Dec	Jan	Feb	Mar	Total	%
Private transport	1203	1111	1340	1082	1098	1320	1269	1131	1174	1265	1115	1390	14498	67
Ambulance	367	390	356	365	320	405	359	336	408	429	351	352	4438	20
Not recorded	102	82	67	102	63	98	73	97	86	61	118	74	1023	5
Taxi	62	59	35	42	41	59	52	69	57	98	71	61	706	3
Public transport	32	30	20	38	26	36	38	40	39	42	49	47	437	2
Foot	37	26	18	31	24	22	18	25	23	29	20	34	307	1
Work transport	9	14	**	7	13	6	**	**	5	12	5	7	89	0
Police	**	8	**	8	**	10	10	9	9	**	**	7	88	0
Other	**	6	6	16	**	7	**	**	7	**	**	6	79	0
Total	1824	1726	1849	1691	1597	1963	1833	1714	1808	1949	1733	1978	21665	100

⁴ Admitted=admitted to ED bed/became a lodged patient of the same health care provider; Discharged=discharged - did not require any follow up treatment; Referral/follow-up =discharged - follow up treatment to be provided by GP, referred to ED clinic, referred to fracture clinic, referred to other out-patient clinic, transferred to other health care provider, referred to other health care professional; Other=died in department, left department before being treated, left department having refused treatment, other.

Figure 4a,b,c,d: Middle Super Output Area of residence for injury attendances to Fairfield General Hospital ED. Quintiles of crude rates per 1,000 population, April 2009 to March 2010

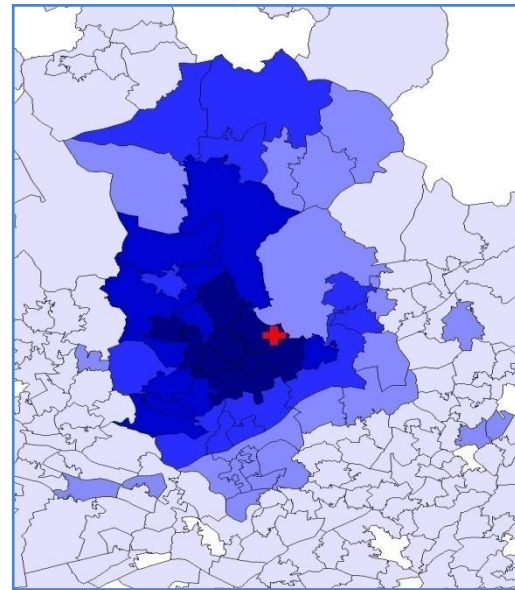
a) All injury attendances: quintiles of crude rates per 1,000 population b) RTC: quintiles of crude rates per 1,000 population

+ Fairfield General Hospital ED



1 (0.00 – 3.97)	MSOA E02001025 (160.62)
2 (3.98 – 14.85)	MSOA E02001026 (149.97)
3 (14.86 – 39.98)	MSOA E02001029 (128.63)
4 (39.99 – 99.98)	MSOA E02001150 (126.04)
5 (99.99 – 160.62)	

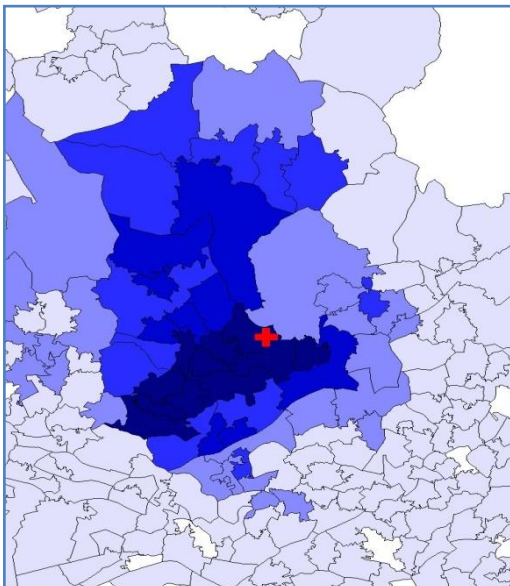
+ Fairfield General Hospital ED



1 (0.00 – 0.30)	MSOA E02001029 (7.77)
2 (0.31 – 1.21)	MSOA E02001026 (7.52)
3 (1.22 – 3.06)	MSOA E02001031 (7.34)
4 (3.07 – 5.24)	MSOA E02001025 (6.86)
5 (5.25 – 7.77)	

c) Assault: quintiles of crude rates per 1,000

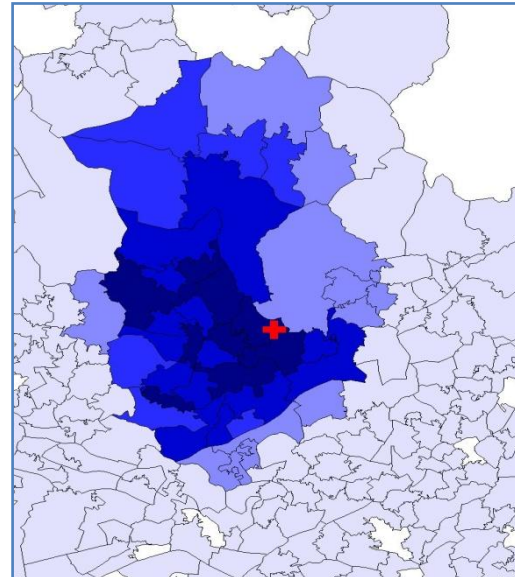
+ Fairfield General Hospital ED



1 (0.00 – 0.19)	MSOA E02001026 (10.22)
2 (0.20 – 0.67)	MSOA E02001025 (8.33)
3 (0.68 – 1.92)	MSOA E02001034 (6.52)
4 (1.93 – 4.04)	MSOA E02001027 (6.00)
5 (4.05 – 10.22)	

d) Fall: quintiles of crude rates per 1,000 population

+ Fairfield General Hospital ED



1 (0.00 – 0.82)	MSOA E02001022 (27.43)
2 (0.83 – 4.75)	MSOA E02001025 (26.34)
3 (4.76 – 11.01)	MSOA E02001027 (24.82)
4 (11.02 – 19.29)	MSOA E02001034 (24.26)
5 (19.30 – 27.43)	

Author: Ian Warren

Published: November 2010

For further information contact:

Centre for Public Health, Research Directorate, Liverpool John Moores University,
3rd Floor, Henry Cotton Building, 15-21 Webster Street, Liverpool, L3 2ET

Tel: 0151 231 4513 or Email: ij.warren@ljmu.ac.uk

Website: www.tiig.info (data requests should be made through the website)

