

Injury attendances to Fairfield General Hospital Emergency Department

April 2010 to March 2011

This report summarises recorded injury attendances to Fairfield General Hospital Emergency Department (ED) between April 2010 and March 2011.

Between April 2010 and March 2011 there were 23,757 injury attendances to Fairfield General Hospital ED. Males accounted for just over half (54%) of all attendances. The month with the highest injury attendances was June (n=2,267) with February (n=1,694) having the lowest (**Figure 1**). Over seven in ten (71%) injury attendances were recorded as other injury. Of the specified injury groups, falls (15%) accounted for the highest proportion followed by road traffic collisions (RTC) (5%) and assault (4%) (**Table 1**).

For all injury attendances, the highest proportions were for persons aged 5 to 19 (26%) and 20 to 34 years (22%) (**Figure 2**). Over half (54%) of fall attendees were aged 65 or over. Nearly two-fifths (39%) of RTC attendees were aged 20 to 34. (**Figure 3**).

Table 2 shows the location of the incident of injury attendances. Over four in ten (41%) injuries occurred in the home. Over one in six (17%) injuries occurred in a public place or at an educational establishment (5%). Nearly three-quarters (73%) of DSH injuries occurred at home. Over half (54%) of falls occurred in the home.

Table 3 shows the ethnicity of attendees to Fairfield General Hospital ED. Almost nine in ten (87%) were white and 5% were Pakistani.

The disposal of a patient can give an indication of the severity of the injuries sustained. Most (61%) attendees were discharged, over a quarter (29%) were referred and 9% were admitted (**Table 4**). Nearly three-quarters (73%) of RTC attendees were discharged (**Table 5**).

Table 6 shows the arrival methods of injury attendances at Fairfield General Hospital ED. Over two-thirds (68%) arrived by private transport while a fifth (21%) arrived by ambulance.

Table 7 presents data for assault attendances to Fairfield ED. Nearly three-quarters (72%) were male, nearly half (48%) occurred in a public place, two-thirds were aged 5 to 34, and nearly four in ten (38%) occurred on weekend nights.

Figure 4 (a-d) shows crude rates of injury attendance at Fairfield General Hospital ED by attendee's area of residence, in this case Middle Super Output Area (MSOA). The MSOAs with the highest crude rates are indicated beneath each figure.¹

¹ Population figures are drawn from mid-2008 population estimates from the Office for National Statistics.

Figure 1: Fairfield General Hospital ED: Total injury attendances by gender and month, April 2010 to March 2011

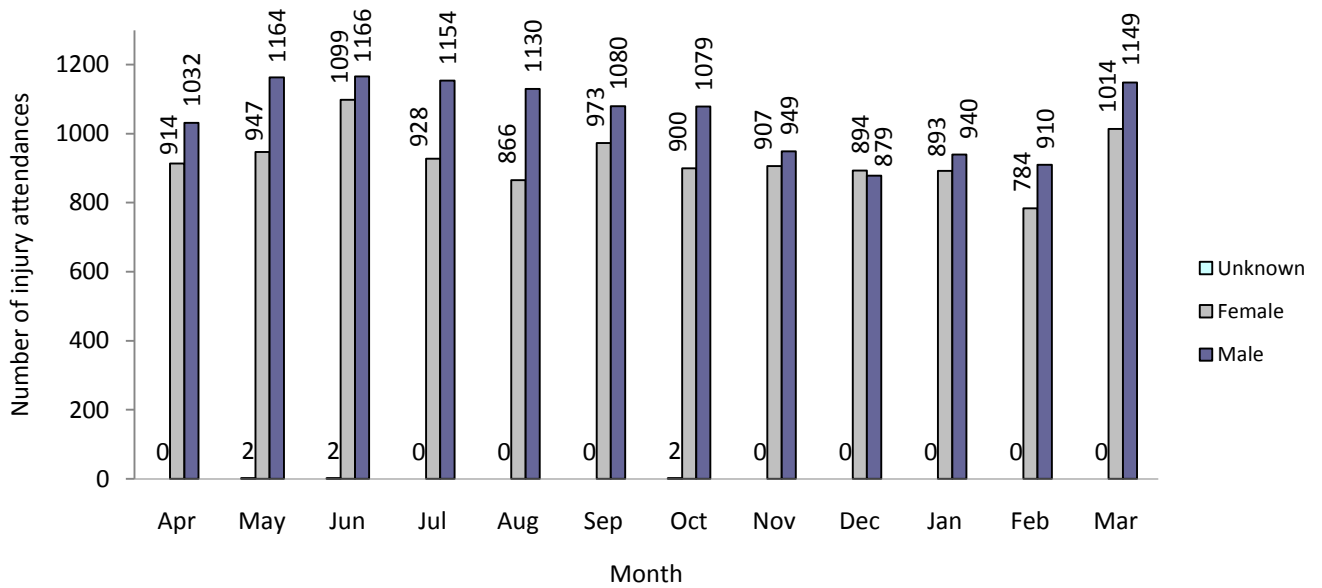


Table 1: Fairfield General Hospital ED: Total injury attendances by injury group and month, April 2010 to March 2011

Injury group	Apr	May	Jun	Jul	Aug	Sep	Oct	Nov	Dec	Jan	Feb	Mar	Total	%*
Other injury	1398	1545	1700	1565	1383	1449	1400	1239	1145	1298	1222	1613	16959	71
Fall	318	306	287	268	300	329	308	311	369	313	250	317	3676	15
RTC	71	93	88	82	99	114	101	131	103	84	95	89	1150	5
Assault	69	60	87	61	89	73	85	79	76	65	58	50	852	4
Burns & scalds	47	50	46	47	48	41	36	58	37	43	39	41	533	2
Bites & stings	27	35	38	37	43	24	29	24	20	18	11	33	339	1
DSH	16	24	21	22	34	23	20	14	23	12	19	20	248	1
Total	1946	2113	2267	2082	1996	2053	1981	1856	1773	1833	1694	2163	23757	100

*Percentages may not add up to 100 due to rounding.

Figure 2: Fairfield General Hospital ED: Total injury attendances by age group and month, April 2010 to March 2011

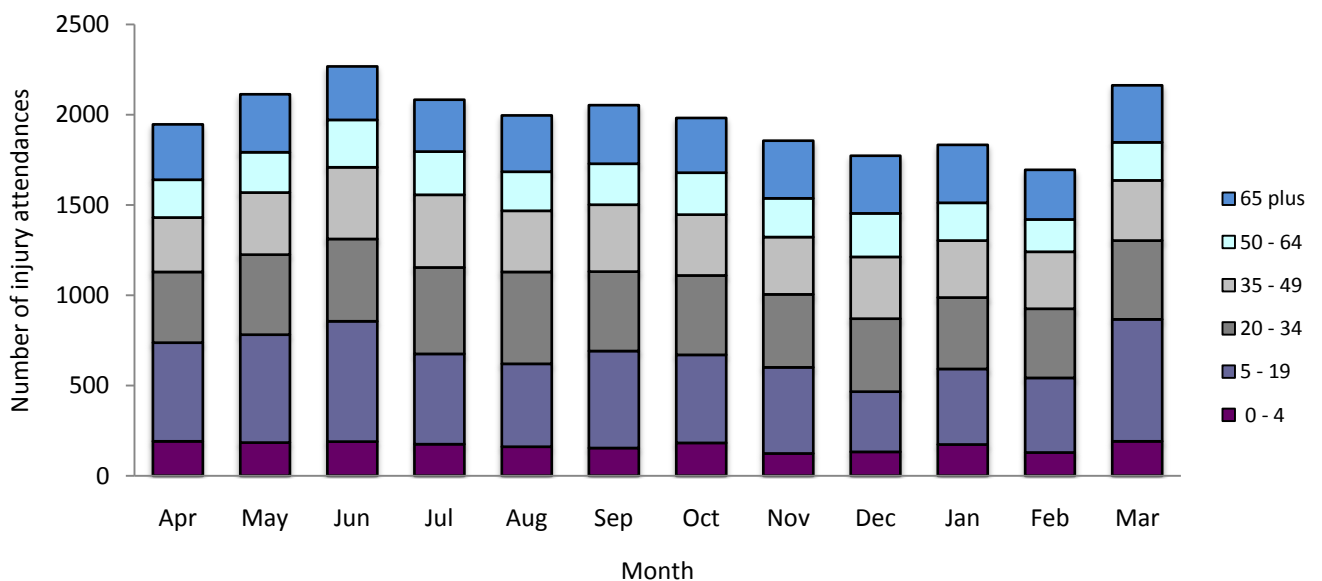


Figure 3: Fairfield General Hospital ED: Total injury attendances by age group and injury group, April 2010 to March 2011 (excluding other injury)

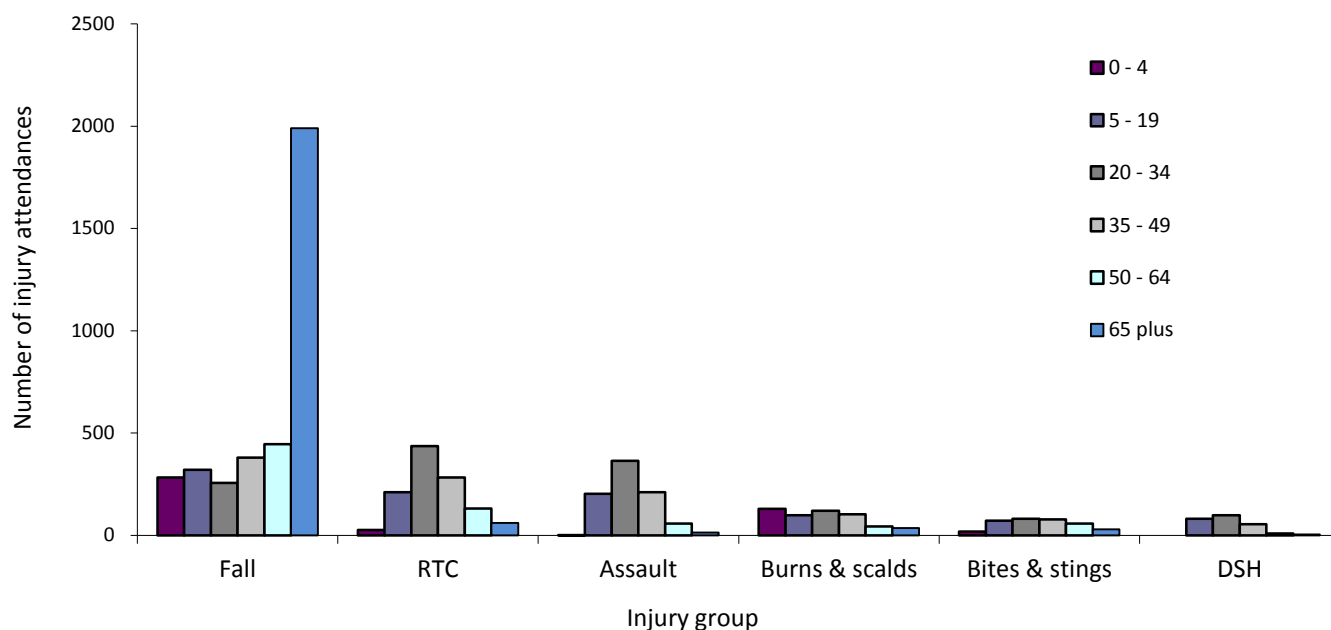


Table 2: Fairfield General Hospital ED: Total injury attendances by location of incident and injury group, April 2010 to March 2011^{2*}

Location	Assault		Bites & stings		Burns & scalds		DSH		Fall		Other		RTC		Total	
	n	%	n	%	n	%	n	%	n	%	n	%	n	%	n	%
Home	212	25	143	42	285	53	181	73	1973	54	6936	41	22	2	9752	41
Other	173	20	51	15	40	8	36	15	258	7	3161	19	1077	94	4796	20
Public place	406	48	92	27	17	3	21	8	784	21	2781	16	27	2	4128	17
Not recorded	16	2	26	8	127	24	8	3	519	14	1546	9	14	1	2256	9
Work	40	5	***	***	***	***	***	***	77	2	1356	8	10	1	1571	7
Educational establishment	5	1	***	***	***	***	***	***	65	2	1179	7	0	0	1254	5
Total	852	100	339	100	533	100	248	100	3676	100	16959	100	1150	100	23757	100

*Percentages may not add up to 100 due to rounding; location was not known in five cases, which have been included in the Total column.

Table 3: Fairfield General Hospital ED: Total injury attendances by ethnicity and month, April 2010 to March 2011³

Ethnicity	Apr	May	Jun	Jul	Aug	Sep	Oct	Nov	Dec	Jan	Feb	Mar	Total	%
White	1718	1857	2000	1790	1719	1797	1720	1615	1527	1579	1468	1855	20645	87
Pakistani	71	89	73	89	104	106	95	85	93	100	85	102	1092	5
Not stated	56	76	80	85	74	66	71	65	55	57	63	87	835	4
Any other ethnic group	50	46	50	47	38	33	34	34	49	42	30	41	494	2
Asian other	11	10	13	18	16	17	21	20	19	19	12	24	200	1
Black	10	6	21	17	16	11	8	10	13	9	13	14	148	1
Mixed	8	14	14	13	12	12	14	9	8	6	11	14	135	1
Indian	7	***	6	7	5	5	***	6	***	10	5	9	70	0
Bangladeshi	6	***	***	13	6	***	***	5	***	6	5	7	64	0
Not known	***	5	***	***	***	***	9	***	***	***	***	5	44	0
Chinese	***	***	***	***	***	***	***	***	***	***	***	5	30	0
Total	1946	2113	2267	2082	1996	2053	1981	1856	1773	1833	1694	2163	23757	100

² Please note that all numbers less than five have been suppressed (***) in line with patient confidentiality and if there is only one number less than five in a category then two numbers will be suppressed at the next level.

³ White = Irish, British, other white background; Mixed = white and black, white and Asian, mixed any other; Other = any other ethnic group, Any other Asian background; Black = African, Caribbean, other black.

Table 4: Fairfield General Hospital ED: Total injury attendances by method of disposal and month, April 2010 to March 2011

Disposal	Apr	May	Jun	Jul	Aug	Sep	Oct	Nov	Dec	Jan	Feb	Mar	Total	%
Discharged	1103	1287	1332	1242	1159	1284	1210	1165	1079	1159	1057	1335	14412	61
Referral/follow-up	649	603	743	641	635	583	577	520	458	482	453	625	6969	29
Admitted	156	192	167	172	182	164	165	155	210	173	165	188	2089	9
Other	38	31	25	27	20	22	29	16	26	19	19	15	287	1
Total	1946	2113	2267	2082	1996	2053	1981	1856	1773	1833	1694	2163	23757	100

Table 5: Fairfield General Hospital ED: Total injury attendances by method of disposal and injury group, April 2010 to March 2011

Disposal	Assault		Bites & stings		Burns & scalds		DSH		Fall		Other		RTC		Total	
	n	%	n	%	n	%	n	%	n	%	n	%	n	%	n	%
Admitted	97	11	***	***	***	***	52	21	938	26	898	5	65	6	2089	9
Referral/follow-up	177	21	88	26	243	46	34	14	743	20	5475	32	209	18	6969	29
Discharged	500	59	242	71	244	46	141	57	1924	52	10525	62	836	73	14412	61
Other	78	9	***	***	***	***	21	8	71	2	61	0	40	3	287	1
Total	852	100	339	100	533	100	248	100	3676	100	16959	100	1150	100	23757	100

Table 6: Fairfield General Hospital ED: Total injury attendances by mode of arrival and month, April 2010 to March 2011

Mode	Apr	May	Jun	Jul	Aug	Sep	Oct	Nov	Dec	Jan	Feb	Mar	Total	%
Private transport	1395	1500	1635	1455	1311	1352	1322	1214	1125	1170	1112	1504	16095	68
Ambulance	351	387	357	380	458	438	448	396	446	426	383	440	4910	21
Not recorded	58	41	91	62	76	89	97	88	59	86	81	46	874	4
Taxi	61	68	72	82	65	69	55	68	75	73	56	72	816	3
Public transport	33	62	41	42	41	45	18	42	30	27	25	42	448	2
Foot	25	43	46	33	33	37	22	21	20	24	19	32	355	1
Police	7	8	14	12	5	8	6	9	12	13	8	12	114	0
Work transport	7	***	5	6	5	5	9	9	***	7	6	6	69	0
Other	***	***	***	***	***	***	***	***	***	***	***	***	45	0
Unknown	***	***	***	***	***	***	***	***	***	***	***	***	31	0
Total	1946	2113	2267	2082	1996	2053	1981	1856	1773	1833	1694	2163	23757	100

*Percentages may not add up to 100 due to rounding.

Table 7: Fairfield General Hospital ED: Total assault and injury attendances by gender, location of incident, age group and day/time of attendance, April 2010 to March 2011

	Assaults attendees		All injuries % (n=23,757)
Sex			
<i>Female</i>	236	28	46
<i>Male</i>	616	72	54
Location		%	%
<i>Public place</i>	406	48	17
<i>Home</i>	212	25	41
<i>Other</i>	173	20	20
<i>Work</i>	40	5	7
<i>Not recorded</i>	16	2	9
<i>Educational establishment</i>	5	1	5
Age group		%	%
<i>0 - 4</i>	2	0	8
<i>5 - 19</i>	203	24	26
<i>20 - 34</i>	364	43	22
<i>35 - 49</i>	211	25	17
<i>50 - 64</i>	58	7	11
<i>65 plus</i>	14	2	2
Day & time		%	%
<i>Weekend nights*</i>	325	38	10
<i>Weekend days</i>	190	22	21
<i>Weekdays</i>	337	40	70

*8pm to 4am, Friday night/Saturday morning; Saturday night/Sunday morning; Sunday night/Monday morning.

Author: Ian Warren, published May 2011

For further information contact: Centre for Public Health, Research Directorate, Liverpool John Moores University,
2nd Floor, Henry Cotton Building, 15-21 Webster Street, Liverpool, L3 2ET

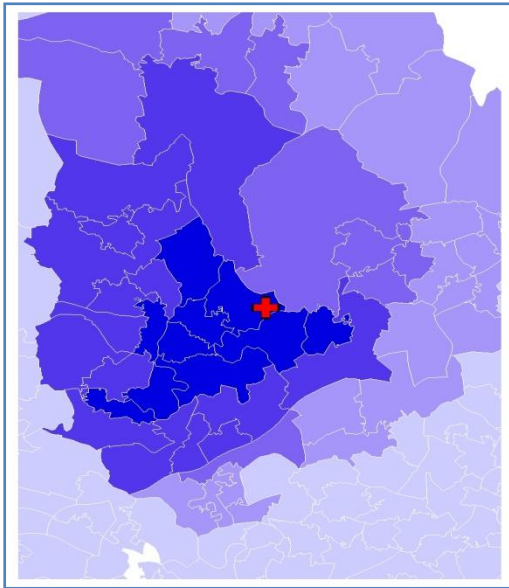
Tel: 0151 231 4513 or Email: i.j.warren@ljmu.ac.uk

Website: www.tiig.info (data requests should be made through the website)

Figure 4a,b,c,d: Middle Super Output Area of residence for injury attendances to Fairfield General Hospital ED. Quintiles of crude rates per 1,000 population, April 2010 to March 2011

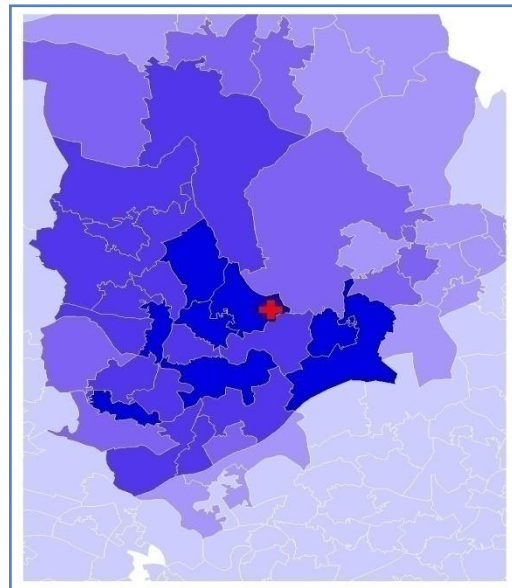
a) All injury attendances: quintiles of crude rates per 1,000 population b) Fall: quintiles of crude rates per 1,000 population

+ Fairfield General Hospital ED



1 (0.00 – 12.24)	MSOA E02001025 (457.39)
2 (12.25 – 48.55)	MSOA E02001026 (446.74)
3 (48.56 – 107.44)	MSOA E02001027 (366.10)
4 (107.45 – 258.50)	MSOA E02001029 (355.22)
5 (258.51 – 457.39)	

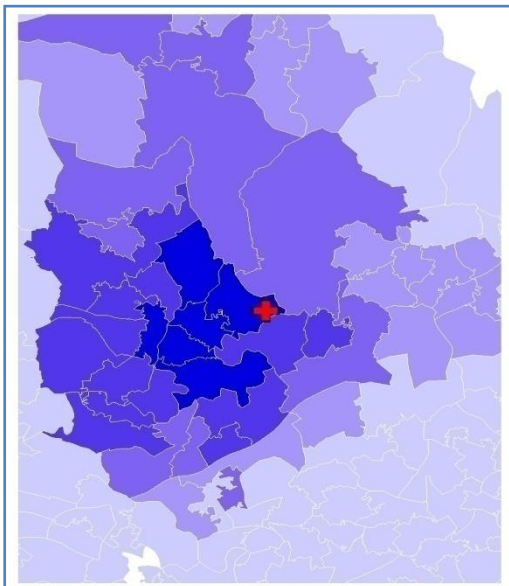
+ Fairfield General Hospital ED



1 (0.00 – 0.84)	MSOA E02001027 (26.93)
2 (0.85 – 3.61)	MSOA E02001025 (24.19)
3 (3.62 – 10.68)	MSOA E02001022 (21.68)
4 (10.69 – 17.34)	MSOA E02001151 (21.24)
5 (17.35 – 26.93)	

c) RTC: quintiles of crude rates per 1,000 population

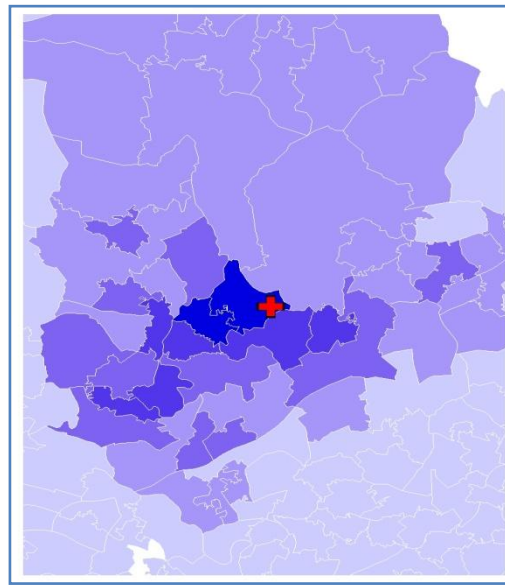
+ Fairfield General Hospital ED



1 (0.00 – 0.40)	MSOA E02001026 (9.98)
2 (0.41 – 1.48)	MSOA E02001029 (7.18)
3 (1.49 – 3.30)	MSOA E02001027 (6.81)
4 (3.31 – 5.25)	MSOA E02001025 (6.45)
5 (5.26 – 9.98)	

d) Assault: quintiles of crude rates per 1,000 population

+ Fairfield General Hospital ED



1 (0.00 – 0.37)	MSOA E02001026 (8.81)
2 (0.38 – 1.39)	MSOA E02001025 (7.93)
3 (1.40 – 3.28)	MSOA E02001149 (5.76)
4 (3.29 – 5.76)	MSOA E02001027 (5.35)
5 (5.77 – 8.81)	