



TIIG

INJURY SURVEILLANCE IN THE NORTH WEST OF ENGLAND

Injury attendances to Fairfield General Hospital Emergency Department

April 2012 to March 2013

This report summarises recorded injury attendances to Fairfield General Emergency Department (ED) between April 2012 and March 2013.

Between April 2012 and March 2013 there were 23,047 injury attendances to Fairfield General Hospital ED. Males accounted for just over half (52%) of all attendances. The month with the highest injury attendances was July (n=2,111) with February (n=1,645) having the lowest (**Figure 1**). Over seven in ten (72%) of injury attendances were recorded as other injury. Of the specified injury groups, falls (14%) accounted for the highest proportion followed by road traffic collisions (RTCs) (5%) and assault (4%) (**Table 1**).

For all injury attendances, the highest proportions were for persons aged 5 to 19 (24%) and 20 to 34 years (24%) (**Figure 2**). Over half (54%) of fall attendees were aged 65 or over. Two-fifths (40%) of RTC attendees and 38% of deliberate self-harm (DSH) attendees were aged 20 to 34 years (**Figure 3**).

Table 2 shows the location of the incident of injury attendances. Over two-fifths (43%) of injuries occurred in the home. Almost one in six (16%) of injuries occurred in a public place with smaller proportions occurring at work (6%) or at an educational establishment (5%). Half (50%) of assaults occurred in a public place. Over three

quarters (77%) of DSH injuries occurred at home. Fifty five per-cent of falls occurred in the home.

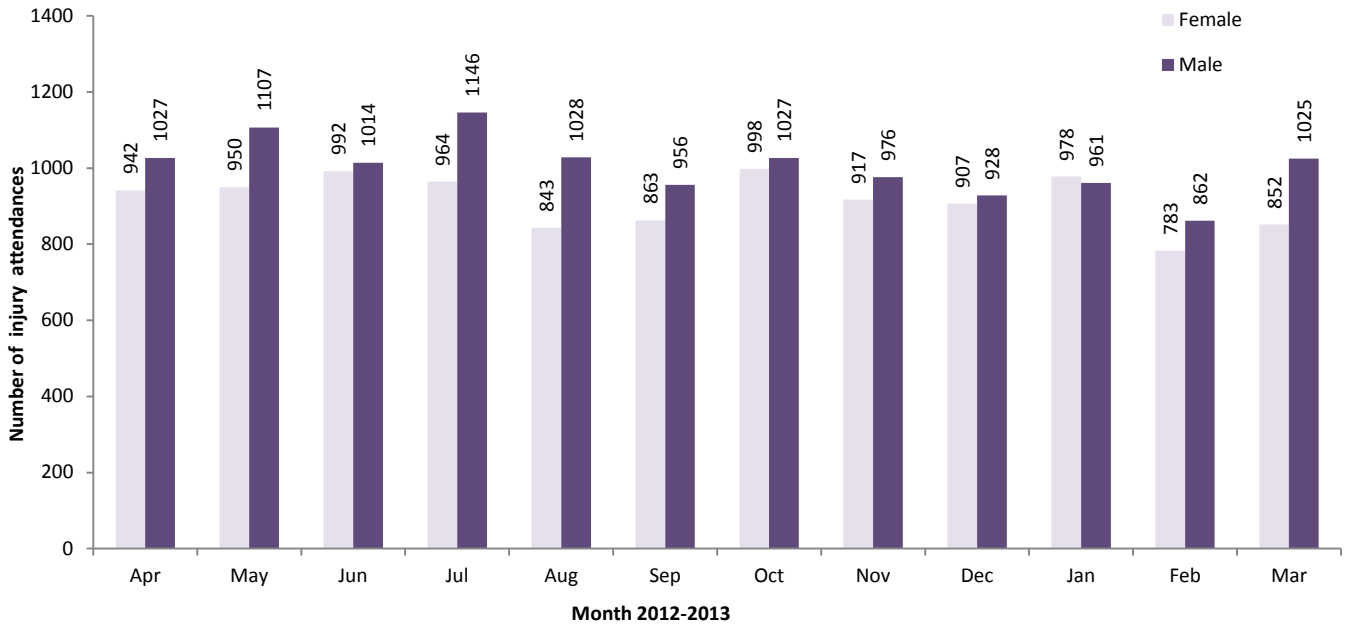
Table 3 shows the ethnicity of attendees to Fairfield General Hospital ED. Almost nine in ten (86%) were white and 6% were Pakistani.

The disposal of a patient can give an indication of the severity of the injuries sustained. Most (62%) attendees were discharged, almost a third (32%) had a referral/follow-up and 6% were admitted (**Table 4**). Over three-quarters (77%) of RTC attendees were discharged. Almost one-fifth (18%) of fall attendees were admitted and over half (51%) of burns and scalds attendees had a referral/follow-up (**Table 5**).

Table 6 shows the arrival methods of injury attendances at Fairfield General Hospital ED. Over seven in ten (71%) arrived by private transport whilst 14% arrived by ambulance.

Table 7 shows assault attendances to Fairfield General ED. Over seven in ten (71%) assault attendees were male and over half (51%) were aged 20 to 34 years. Three in ten (30%) of assault attendances arrived at the ED by ambulance.

Figure 1: Fairfield General Hospital ED: Total injury attendances by gender and month, April 2012 to March 2013*



*There was one attendance where gender was unknown

Table 1: Fairfield General Hospital ED: Total injury attendances by injury group and month, April 2012 to March 2013

Injury group	Apr	May	Jun	Jul	Aug	Sep	Oct	Nov	Dec	Jan	Feb	Mar	Total	%
Other injury	1473	1495	1491	1568	1321	1342	1504	1365	1257	1332	1175	1341	16664	72
Fall	253	273	260	280	230	241	258	253	315	378	251	298	3290	14
RTC	70	83	99	63	106	101	104	102	97	76	84	74	1059	5
Assault	82	88	52	83	84	65	64	71	89	75	56	71	880	4
Burns and scalds	35	53	36	47	47	29	41	52	29	41	40	41	491	2
Bites and stings	35	44	48	54	58	18	36	29	21	20	21	26	410	2
DSH	21	21	20	16	25	23	18	21	27	17	18	26	253	1
Total	1969	2057	2006	2111	1871	1819	2025	1893	1835	1939	1645	1877	23047	100

Figure 2: Fairfield General Hospital ED: Total injury attendances by age group and month, April 2012 to March 2013

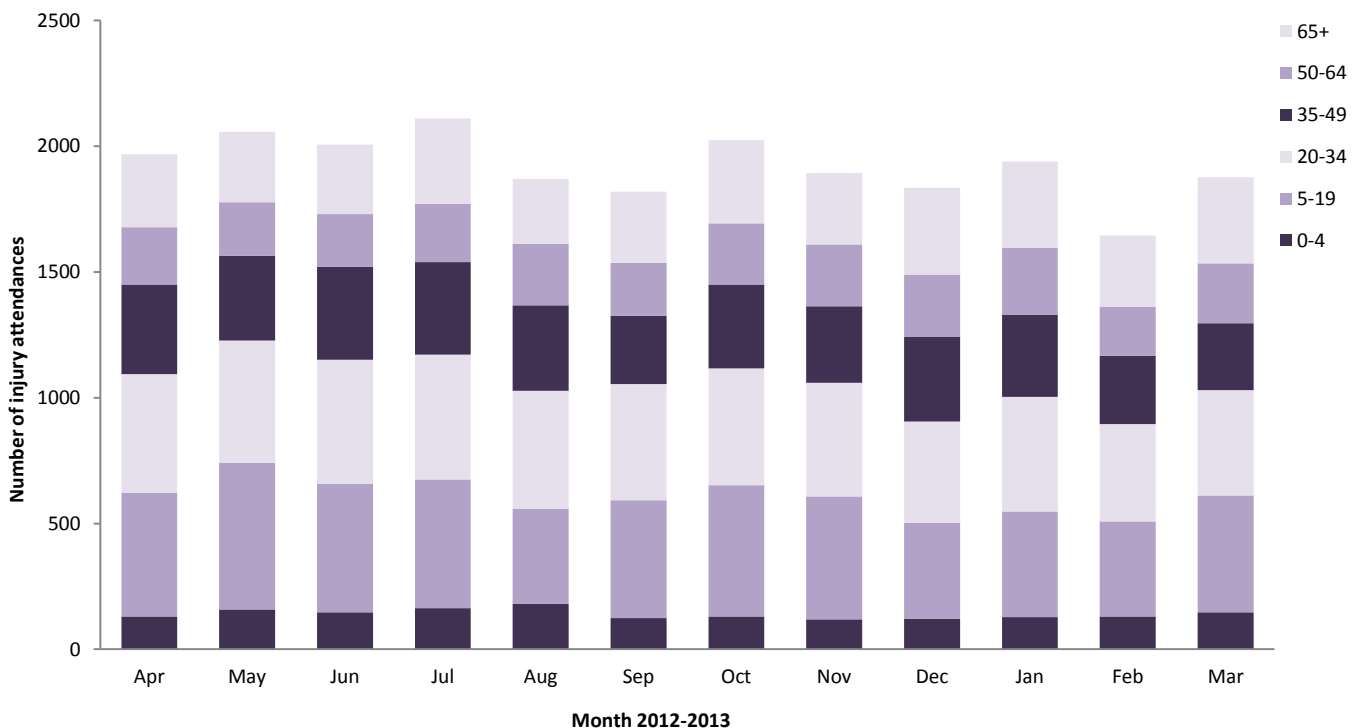


Figure 3: Fairfield General Hospital ED: Total injury attendances by age group and injury group, April 2012 to March 2013 (excluding other injury)

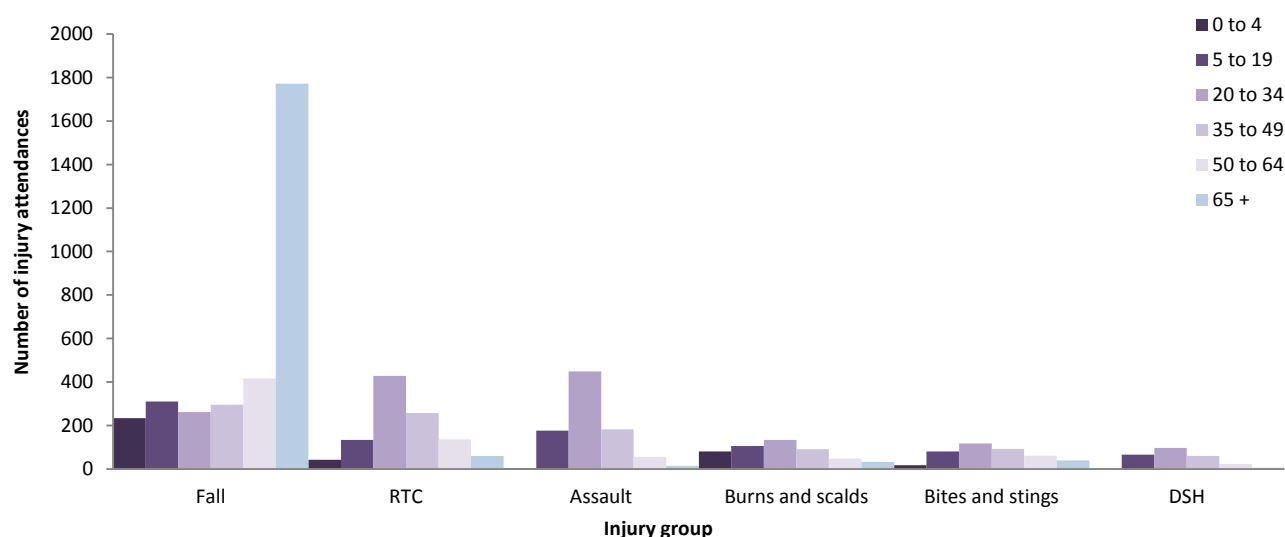


Table 2: Fairfield General Hospital ED: Total injury attendances by location of incident and injury group, April 2012 to March 2013¹

Incident location	Assault		Bites and stings		Burns and scalds		DSH		Fall		RTC		Other		Total	
	n	%	n	%	n	%	n	%	n	%	n	%	n	%	n	%
Home	186	21	165	40	238	48	194	77	1799	55	21	2	7278	44	9881	43
Other	152	17	50	12	25	5	26	10	218	7	999	94	2899	17	4369	19
Public place	441	50	81	20	19	4	26	10	719	22	15	1	2323	14	3624	16
Not recorded	22	3	79	19	150	31	7	3	398	12	18	2	2045	12	2719	12
Work	60	7	<35	8	52	11	0	0	58	2	<7	1	1175	7	1385	6
Educational establishment	19	2	***	0	7	1	0	0	98	3	***	0	944	6	1069	5
Total	880	100	410	100	491	100	253	100	3290	100	1059	100	16664	100	23047	100

Table 3: Fairfield General Hospital ED: Total injury attendances by ethnicity and month, April 2012 to March 2013^{1,2}

Ethnicity	Apr	May	Jun	Jul	Aug	Sep	Oct	Nov	Dec	Jan	Feb	Mar	Total	%
White	1712	1750	1680	1819	1619	1604	1772	1627	1569	1652	1436	1642	19882	86
Pakistani	115	130	137	133	104	95	98	102	92	109	91	99	1305	6
Not known	51	69	87	44	70	51	71	65	78	64	59	55	764	3
Any other ethnic group	31	36	37	47	34	37	43	33	32	54	26	24	434	2
Any other Asian background	18	25	18	26	13	12	8	15	20	20	15	14	204	1
Mixed	15	16	20	19	15	9	14	16	15	13	6	15	173	1
Black	13	19	11	7	<10	***	11	21	13	14	9	15	142	1
Indian	7	7	8	6	***	***	<10	6	5	6	***	8	64	0
Bangladeshi	<10	***	<10	<10	***	5	***	<10	5	***	***	5	54	0
Chinese	***	***	***	***	6	0	0	***	6	***	0	0	25	0
Total	1969	2057	2006	2111	1871	1819	2025	1893	1835	1939	1645	1877	23047	100

Table 4: Fairfield General Hospital ED: Total injury attendances by method of disposal and month, April 2012 to March 2013

Disposal	Apr	May	Jun	Jul	Aug	Sep	Oct	Nov	Dec	Jan	Feb	Mar	Total	%
Discharged	1195	1411	1272	1216	1173	1098	1263	1170	1135	1192	1024	1063	14212	62
Referral/follow-up	652	507	609	754	553	611	638	607	559	616	515	663	7284	32
Admitted	113	122	117	122	118	104	115	99	125	119	92	125	1371	6
Other	9	17	8	19	27	6	9	17	16	12	14	26	180	1
Total	1969	2057	2006	2111	1871	1819	2025	1893	1835	1939	1645	1877	23047	100

¹ Please note that all numbers less than five have been suppressed (***) in line with patient confidentiality and if there is only one number less than five in a category then two numbers will be suppressed at the next level.

² White = Irish, British, other white background; Mixed = white and black, white and Asian, mixed other; Black = African, Caribbean, other black.

Table 5: Fairfield General Hospital ED: Total injury attendances by method of disposal and injury group, April 2012 to March 2013¹

Disposal	Assault		Bites and stings		Burns and scalds		DSH		Fall		Other injury		RTC		Total	
	n	%	n	%	n	%	n	%	n	%	n	%	n	%	n	%
Discharged	545	62	254	62	209	43	127	50	1851	56	10410	62	816	77	14212	62
Referral/follow-up	236	27	148	36	250	51	32	13	814	25	5597	34	207	20	7284	32
Admitted	45	5	<10	1	<15	3	71	28	596	18	613	4	27	3	1371	6
Other	54	6	***	1	<20	4	23	9	29	1	44	0	9	1	180	1
Total	880	100	410	100	491	100	253	100	3290	100	16664	100	1059	100	23047	100

Table 6: Fairfield General Hospital ED: Total injury attendances by mode of arrival and month, April 2012 to March 2013¹

Arrival mode	Apr	May	Jun	Jul	Aug	Sep	Oct	Nov	Dec	Jan	Feb	Mar	Total	%
Private transport	1439	1515	1475	1525	1356	1313	1454	1308	1265	1333	1135	1305	16423	71
Ambulance	232	241	228	253	229	220	246	275	300	338	266	346	3174	14
Not recorded	132	105	120	150	123	122	163	152	111	114	96	65	1453	6
Taxi	59	92	81	71	62	78	65	68	73	76	59	67	851	4
Public transport	42	25	41	45	30	23	39	28	25	37	41	39	415	2
Foot	33	40	26	29	34	34	27	34	19	23	26	24	349	2
Police	17	25	12	19	25	15	12	13	29	8	6	18	199	1
Work transport	11	6	16	10	8	9	<10	<15	8	7	12	8	114	0
Other	***	***	***	<10	***	***	10	***	***	***	***	***	44	0
Unknown	***	***	<10	***	***	***	***	0	***	***	***	***	25	0
Total	1969	2057	2006	2111	1871	1819	2025	1893	1835	1939	1645	1877	23047	100

Table 7: Fairfield General Hospital ED: Total injury attendances by mode of arrival, gender and age group, April 2012 to March 2013¹

	Assault attendees (n=880)		All injuries (n=23,047)	
	n	%	n	%
Gender				
Female	259	29		48
Male	621	71		52
Mode of arrival				
Ambulance	261	30		14
Other	619	70		86
Age group				
0 - 4	***	0		7
5-19	177	20		24
20 - 34	449	51		24
35 - 49	182	21		17
50 - 64	56	6		12
65 plus	<15	2		16

Published July 2013

Jennifer Brizell (TIIG researcher)

Centre for Public Health, Faculty of Health and Applied Social Sciences, Liverpool John Moores University

2nd Floor, Henry Cotton Campus, 15-21 Webster Street, Liverpool, L3 2ET

Tel: 0151 231 4500 Email: j.s.brizell@ljmu.ac.uk

Website: www.tiig.info (please note all data requests should be made through the TIIG website)

¹ Please note that all numbers less than five have been suppressed (***) in line with patient confidentiality and if there is only one number less than five in a category then two numbers will be suppressed at the next level.