



TIIG

INJURY SURVEILLANCE IN THE NORTH WEST OF ENGLAND

Injury attendances to Fairfield General Hospital Emergency Department

October 2012 to September 2013

This report summarises recorded injury attendances to Fairfield General Emergency Department (ED) between October 2012 and September 2013.

Between October 2012 and September 2013 there were 22,777 injury attendances to Fairfield General Hospital ED. Males accounted for just over half (52%) of all attendances. The month with the highest injury attendances was July (n=2,216) with September (n=1,631) having the lowest (**Figure 1**). Seven in ten (70%) of injury attendances were recorded as other injury. Of the specified injury groups, falls (16%) accounted for the highest proportion followed by road traffic collisions (RTCs) (5%) and assault (4%) (**Table 1**).

For all injury attendances, the highest proportions were for persons aged 5 to 19 (24%) and 20 to 34 years (23%) (**Figure 2**). Over a third (38%) of RTC attendees and 39% of deliberate self-harm (DSH) attendees were aged 20 to 34 years (**Figure 3**).

Table 2 shows the location of the incident of injury attendances. Over two-fifths (43%) of injuries occurred in the home. Almost one in six (16%) of injuries occurred in a public place with smaller proportions occurring at work (6%) or at an educational establishment (5%). Close to half (45%) of assaults occurred in a public place. Seven in ten (70%) of DSH injuries occurred at home. Fifty six per cent of falls occurred in the home.

Table 3 shows the ethnicity of attendees to Fairfield General Hospital ED. Close to nine in ten (86%) were white and 6% were Pakistani.

The disposal of a patient can give an indication of the severity of the injuries sustained. Most (59%) attendees were discharged, a third (33%) had a referral/follow-up and 6% were admitted (**Table 4**). Three-quarters (75%) of RTC attendees were discharged. Almost one-fifth (19%) of fall attendees were admitted and over half (53%) of burns and scalds attendees had a referral/follow-up (**Table 5**).

Table 6 shows the arrival methods of injury attendances at Fairfield General Hospital ED. Seven in ten (70%) arrived by private transport whilst 17% arrived by ambulance.

Table 7 shows assault attendances to Fairfield General ED. Over seven in ten (71%) assault attendees were male and 47% were aged 20 to 34 years. Almost four in ten (38%) of assault attendances arrived at the ED by ambulance.

Figure 1: Fairfield General Hospital ED: Total injury attendances by gender and month, October 2012 to September 2013

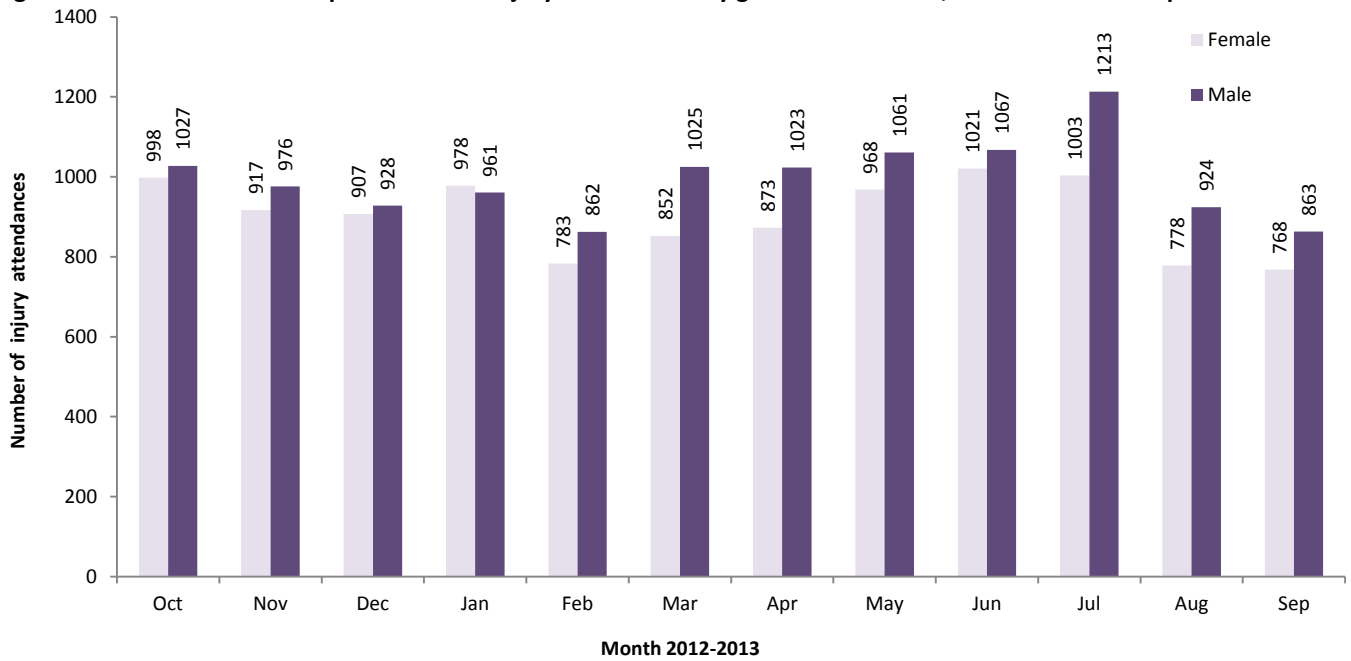


Table 1: Fairfield General Hospital ED: Total injury attendances by injury group and month, October 2012 to September 2013

Injury group	Oct	Nov	Dec	Jan	Feb	Mar	Apr	May	Jun	Jul	Aug	Sep	Total	%
Other injury	1504	1365	1257	1332	1175	1341	1368	1459	1520	1595	1116	1025	16057	70
Fall	258	253	315	378	251	298	315	323	304	339	315	318	3667	16
RTC	104	102	97	76	84	74	73	89	101	89	73	105	1067	5
Assault	64	71	89	75	56	71	64	83	80	90	89	73	905	4
Burns and scalds	41	52	29	41	40	41	39	32	28	29	44	46	462	2
Bites and stings	36	29	21	20	21	26	18	24	30	56	33	35	349	2
DSH	18	21	27	17	18	26	19	20	25	18	32	29	270	1
Total	2025	1893	1835	1939	1645	1877	1896	2030	2088	2216	1702	1631	22777	100

Figure 2: Fairfield General Hospital ED: Total injury attendances by age group and month, October 2012 to September 2013

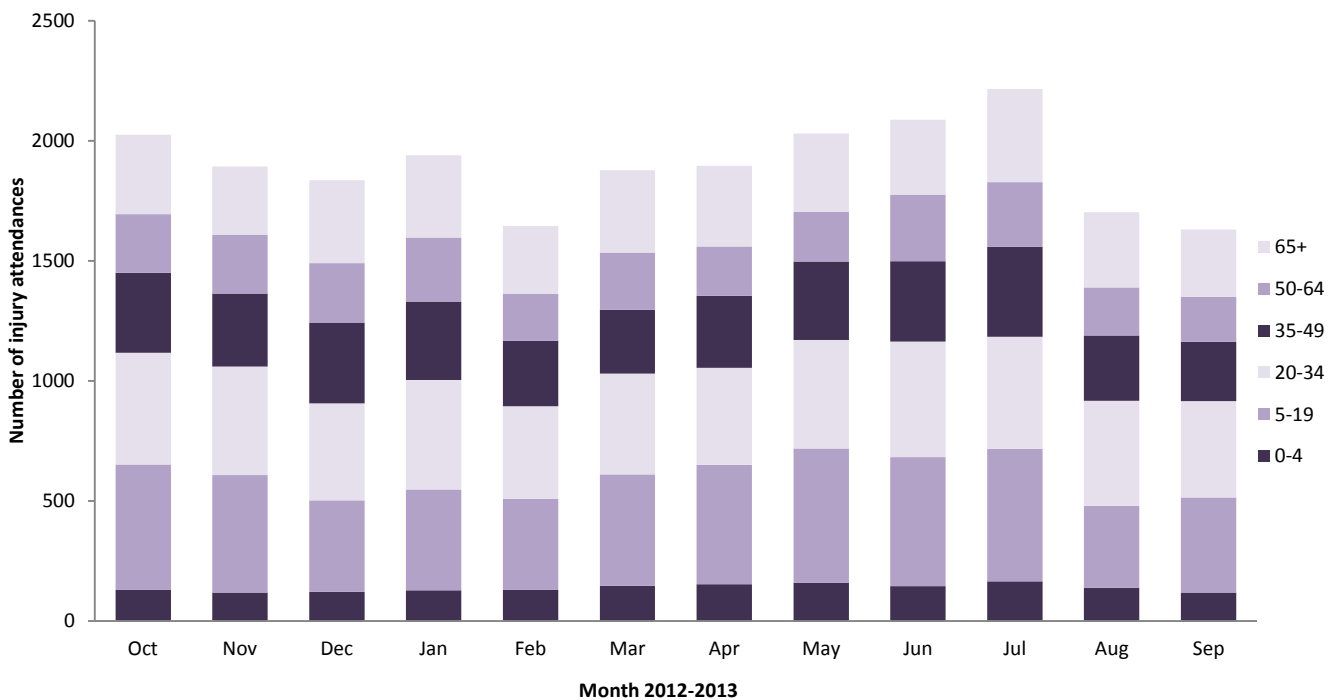


Figure 3: Fairfield General Hospital ED: Total injury attendances by age group and injury group, October 2012 to September 2013 (excluding other injury)

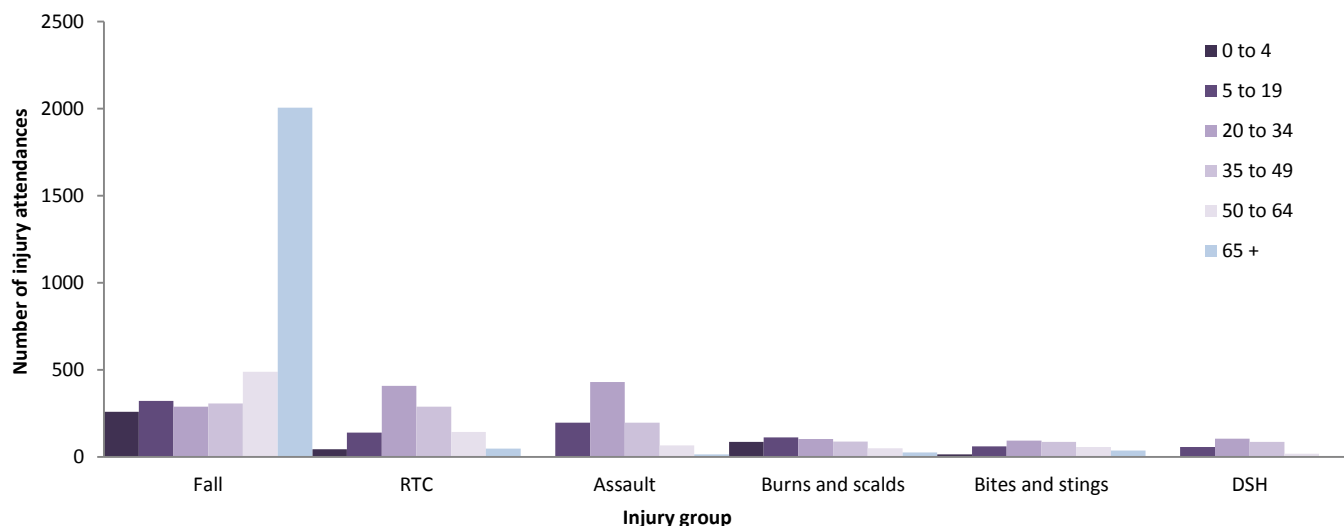


Table 2: Fairfield General Hospital ED: Total injury attendances by location of incident and injury group, October 2012 to September 2013¹

Incident location	Assault		Bites and stings		Burns and scalds		DSH		Fall		RTC		Other		Total	
	n	%	n	%	n	%	n	%	n	%	n	%	n	%	n	%
Home	189	21	143	41	227	49	190	70	2048	56	20	2	6964	43	9781	43
Other	209	23	54	15	37	8	36	13	239	7	1004	94	2832	18	4411	19
Public place	410	45	77	22	16	3	34	13	780	21	15	1	2421	15	3753	16
Not recorded	24	3	46	13	132	29	<10	3	421	11	<25	2	1681	10	2336	10
Work	53	6	<30	8	43	9	0	0	65	2	***	0	1140	7	1333	6
Educational establishment	20	2	***	0	7	2	***	1	114	3	0	0	1019	6	1163	5
Total	905	100	349	100	462	100	270	100	3667	100	1067	100	16057	100	22777	100

Table 3: Fairfield General Hospital ED: Total injury attendances by ethnicity and month, October 2012 to September 2013^{1,2}

Ethnicity	Oct	Nov	Dec	Jan	Feb	Mar	Apr	May	Jun	Jul	Aug	Sep	Total	%
White	1772	1627	1569	1652	1436	1642	1641	1749	1792	1934	1457	1405	19676	86
Pakistani	98	102	92	109	91	99	113	116	141	116	115	101	1293	6
Not known	71	65	78	64	59	55	62	77	66	67	61	56	781	3
Any other ethnic group	43	33	32	54	26	24	25	40	33	35	22	32	399	2
Any other Asian background	8	15	20	20	15	14	15	16	12	12	14	10	171	1
Mixed	14	16	15	13	6	15	15	12	15	21	15	10	167	1
Black	11	21	13	14	9	15	14	13	17	16	12	9	164	1
Indian	<6	<10	5	6	***	8	6	***	6	***	***	<10	60	0
Bangladeshi	***	6	5	***	***	5	***	***	***	7	***	***	42	0
Chinese	0	***	6	***	0	0	***	***	***	***	***	0	24	0
Total	2025	1893	1835	1939	1645	1877	1896	2030	2088	2216	1702	1631	22777	100

Table 4: Fairfield General Hospital ED: Total injury attendances by method of disposal and month, October 2012 to September 2013

Disposal	Oct	Nov	Dec	Jan	Feb	Mar	Apr	May	Jun	Jul	Aug	Sep	Total	%
Discharged	1263	1170	1135	1192	1024	1063	1037	1163	1076	1249	1070	1086	13528	59
Referral/follow-up	638	607	559	616	515	663	713	731	871	782	476	412	7583	33
Admitted	115	99	125	119	92	125	125	114	120	167	137	115	1453	6
Other	9	17	16	12	14	26	21	22	21	18	19	18	213	1
Total	2025	1893	1835	1939	1645	1877	1896	2030	2088	2216	1702	1631	22777	100

¹ Please note that all numbers less than five have been suppressed (***) in line with patient confidentiality and if there is only one number less than five in a category then two numbers will be suppressed at the next level.

² White = Irish, British, other white background; Mixed = white and black, white and Asian, mixed other; Black = African, Caribbean, other black.

Table 5: Fairfield General Hospital ED: Total injury attendances by method of disposal and injury group (excluding other injury), October 2012 to September 2013³

Disposal	Assault		Bites and stings		Burns and scalds		DSH		Fall		RTC		Total	
	n	%	n	%	n	%	n	%	n	%	n	%	n	%
Discharged	552	61	224	64	192	42	151	56	1960	53	802	75	3881	58
Referral/follow-up	239	26	120	34	244	53	23	9	971	26	226	21	1823	27
Admitted	46	5	***	1	<15	2	67	25	686	19	27	3	841	13
Other	68	8	***	0	<20	3	29	11	50	1	12	1	175	3
Total	905	100	349	100	462	100	270	100	3667	100	1067	100	6720	100

Table 6: Fairfield General Hospital ED: Total injury attendances by mode of arrival and month, October 2012 to September 2013³

Arrival mode	Oct	Nov	Dec	Jan	Feb	Mar	Apr	May	Jun	Jul	Aug	Sep	Total	%
Private transport	1454	1308	1265	1333	1135	1305	1358	1441	1473	1568	1182	1121	15943	70
Ambulance	246	275	300	338	266	346	304	352	364	376	347	308	3822	17
Not recorded	163	152	111	114	96	65	64	61	57	71	52	62	1068	5
Taxi	65	68	73	76	59	67	81	83	73	84	53	58	840	4
Public transport	39	28	25	37	41	39	33	39	51	38	22	30	422	2
Foot	27	34	19	23	26	24	29	27	38	41	22	20	330	1
Police	12	13	29	8	6	18	13	17	16	22	12	13	179	1
Work transport	<10	<15	8	7	12	8	8	6	8	8	6	13	103	0
Other	10	***	***	***	***	***	***	***	***	***	6	***	45	0
Unknown	***	0	***	***	***	***	***	***	<6	***	0	***	25	0
Total	2025	1893	1835	1939	1645	1877	1896	2030	2088	2216	1702	1631	22777	100

Table 7: Fairfield General Hospital ED: Total injury attendances by mode of arrival, gender and age group, October 2012 to September 2013³

	Assault attendees (n=905)		All injuries (n=22,777)
	n	%	%
Gender			
Female	260	29	48
Male	645	71	52
Mode of arrival			
Ambulance	340	38	17
Other	565	62	83
Age group			
0 - 4	***	0	7
5-19	196	22	24
20 - 34	429	47	23
35 - 49	197	22	16
50 - 64	66	7	12
65 plus	<15	2	17

Published November 2013
 Jennifer Brizell (TIIG researcher)
 Centre for Public Health, Faculty of Education, Health and Community, Liverpool John Moores University
 2nd Floor, Henry Cotton Campus, 15-21 Webster Street, Liverpool, L3 2ET
 Tel: 0151 231 4500 Email: j.s.brizell@ljmu.ac.uk
 Website: www.tiig.info (please note all data requests should be made through the TIIG website)
 Twitter: @TIIG_CPH

³ Please note that all numbers less than five have been suppressed (***) in line with patient confidentiality and if there is only one number less than five in a category then two numbers will be suppressed at the next level.