



# TIIG

INJURY SURVEILLANCE IN THE NORTH WEST OF ENGLAND

## Injury attendances to Fairfield General Hospital Emergency Department

### April 2013 to March 2014

This report summarises recorded injury attendances to Fairfield General Emergency Department (ED) between April 2013 and March 2014.

Between April 2013 and March 2014, there were 21,451 injury attendances to Fairfield General Hospital ED. Males accounted for just over half (53%) of all attendances. The month with the highest injury attendances was July (n=2,216) with December (n=1,485) having the lowest (**Figure 1**). Almost seven in ten (68%) of injury attendances were recorded as other injury. Of the specified injury groups, falls (18%) accounted for the highest proportion followed by road traffic collisions (RTCs) (5%) and assault (4%) (**Table 1**).

For all injury attendances, the highest proportions were for persons aged 5 to 19 (24%) and 20 to 34 years (23%) (**Figure 2**). Close to two-fifths (37%) of RTC attendees and 44% of deliberate self-harm (DSH) attendees were aged 20 to 34 years (**Figure 3**).

**Table 2** shows the location of the incident of injury attendances. Over two-fifths (43%) of injuries occurred in the home. Fifteen per cent of injuries occurred in a public place with smaller proportions occurring at work (6%) or at an educational establishment (5%). Over two-fifths (41%) of assaults occurred in a public place. Over three-fifths (66%) of DSH injuries occurred at home. Fifty-five per cent of falls occurred in the home.

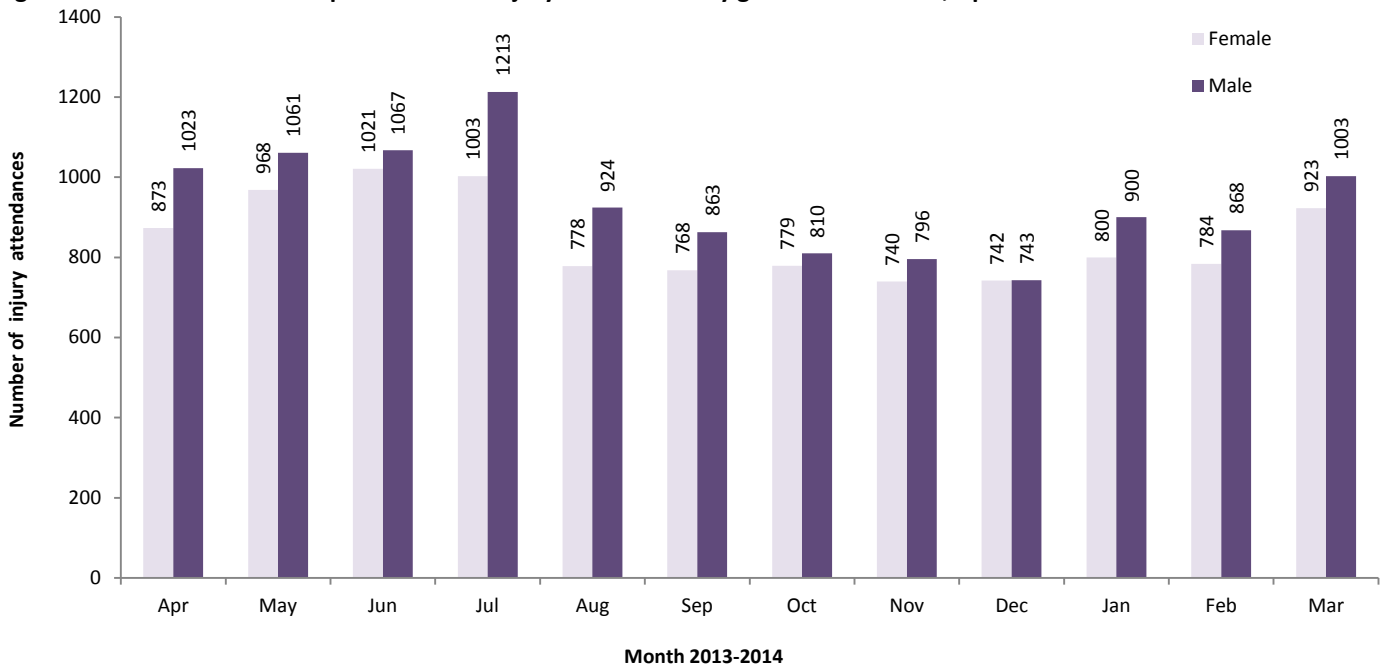
**Table 3** shows the ethnicity of attendees to Fairfield General Hospital ED. Close to nine in ten (87%) were white and 6% were Pakistani.

The disposal of a patient can give an indication of the severity of the injuries sustained. Most (59%) attendees were discharged, a third (33%) had a referral/follow-up and 7% were admitted (**Table 4**). Three-quarters (75%) of RTC attendees were discharged. Eighteen per cent of fall attendees were admitted and almost half (49%) of burns and scalds attendees had a referral/follow-up (**Table 5**).

**Table 6** shows the arrival methods of injury attendances at Fairfield General Hospital ED. Almost seven in ten (69%) arrived by private transport whilst 18% arrived by ambulance.

**Table 7** shows assault attendances to Fairfield General ED. Almost seven in ten (69%) assault attendees were male and 46% were aged 20 to 34 years. Almost four in ten (39%) of assault attendees arrived at the ED by ambulance.

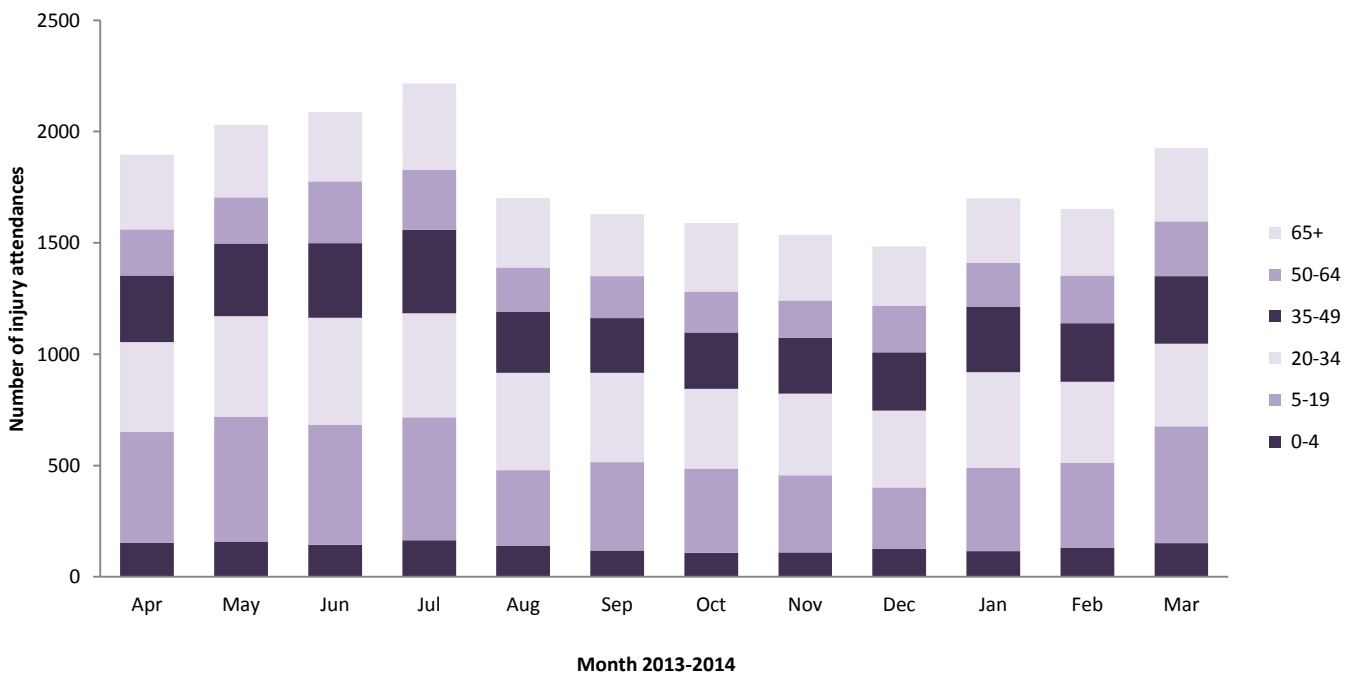
**Figure 1: Fairfield General Hospital ED: Total injury attendances by gender and month, April 2013 to March 2014<sup>1</sup>**



**Table 1: Fairfield General Hospital ED: Total injury attendances by injury group and month, April 2013 to March 2014**

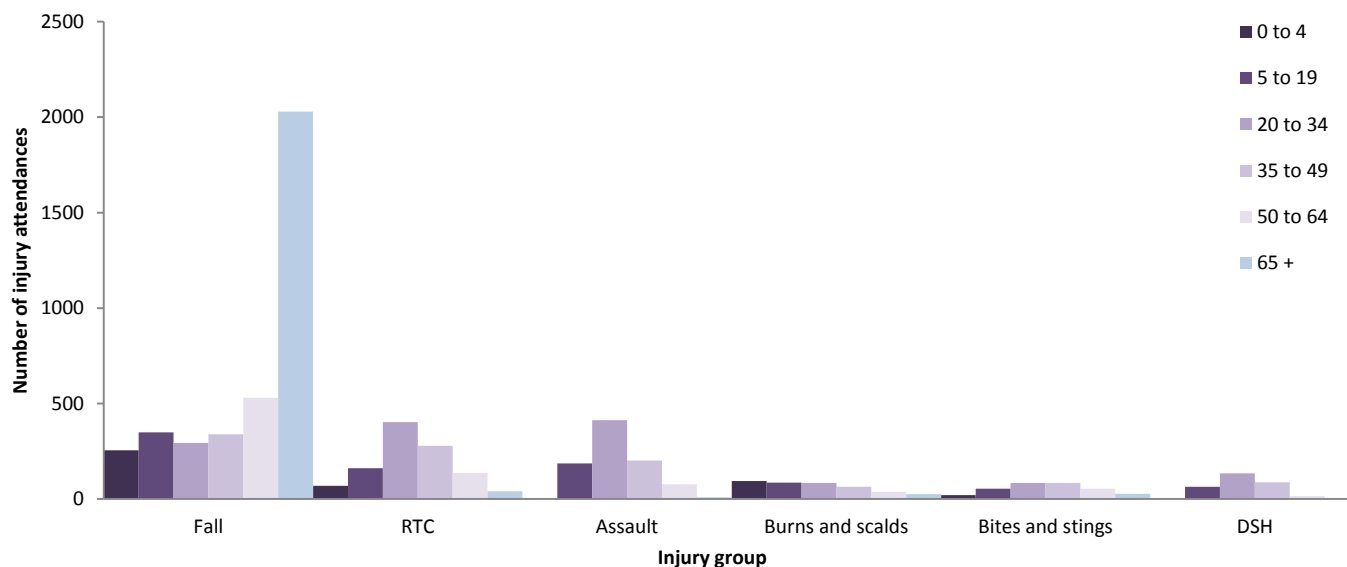
Injury group	Apr	May	Jun	Jul	Aug	Sep	Oct	Nov	Dec	Jan	Feb	Mar	Total	%
Other injury	1368	1459	1520	1595	1116	1025	1022	926	902	1178	1139	1385	14635	68
Fall	315	323	304	339	315	318	330	336	307	295	300	315	3797	18
Road traffic collision	73	89	101	89	73	105	81	124	111	98	80	66	1090	5
Assault	64	83	80	90	89	73	75	78	67	65	70	71	905	4
Burns and scalds	39	32	28	29	44	46	34	24	34	21	23	38	392	2
Bites and stings	18	24	30	56	33	35	23	27	28	13	10	28	325	2
DSH	19	20	25	18	32	29	24	21	36	30	30	23	307	1
<b>Total</b>	<b>1896</b>	<b>2030</b>	<b>2088</b>	<b>2216</b>	<b>1702</b>	<b>1631</b>	<b>1589</b>	<b>1536</b>	<b>1485</b>	<b>1700</b>	<b>1652</b>	<b>1926</b>	<b>21451</b>	<b>100</b>

**Figure 2: Fairfield General Hospital ED: Total injury attendances by age group and month, April 2013 to March 2014**



<sup>1</sup> There was one gender which was recorded as unknown.

**Figure 3: Fairfield General Hospital ED: Total injury attendances by age group and injury group, April 2013 to March 2014 (excluding other injury)**



**Table 2: Fairfield General Hospital ED: Total injury attendances by location of incident and injury group, April 2013 to March 2014**

Incident location	Assault		Bites and stings		Burns and scalds		DSH		Fall		RTC		Other		Total	
	n	%	n	%	n	%	n	%	n	%	n	%	n	%	n	%
Home	180	20	140	43	206	53	203	66	2087	55	16	1	6429	44	9261	43
Other	237	26	61	19	46	12	57	19	349	9	1050	96	2887	20	4687	22
Public place	372	41	63	19	12	3	33	11	760	20	8	1	2029	14	3277	15
Not recorded	20	2	32	10	80	20	<15	3	408	11	<20	1	1177	8	1742	8
Work	75	8	<30	9	<45	11	0	0	84	2	***	0	1122	8	1354	6
Educational establishment	21	2	***	0	***	1	***	1	109	3	0	0	991	7	1130	5
<b>Total</b>	<b>905</b>	<b>100</b>	<b>325</b>	<b>100</b>	<b>392</b>	<b>100</b>	<b>307</b>	<b>100</b>	<b>3797</b>	<b>100</b>	<b>1090</b>	<b>100</b>	<b>14635</b>	<b>100</b>	<b>21451</b>	<b>100</b>

**Table 3: Fairfield General Hospital ED: Total injury attendances by ethnicity and month, April 2013 to March 2014<sup>1,2</sup>**

Ethnicity	Apr	May	Jun	Jul	Aug	Sep	Oct	Nov	Dec	Jan	Feb	Mar	Total	%
White	1641	1749	1792	1934	1457	1405	1412	1309	1275	1488	1447	1686	18595	87
Pakistani	113	116	141	116	115	101	92	95	103	84	93	90	1259	6
Not known	62	77	66	67	61	56	24	53	49	45	43	56	659	3
Any other ethnic group	25	40	33	35	22	32	23	30	15	33	28	34	350	2
Mixed	15	12	15	21	15	10	9	9	11	18	13	20	168	1
Black	14	13	17	16	12	9	13	16	12	13	8	12	155	1
Any other Asian background	15	16	12	12	14	10	10	13	15	11	9	10	147	1
Indian	6	***	6	***	***	7	***	6	***	***	***	11	61	0
Bangladeshi	***	***	***	7	***	***	***	***	***	***	***	***	33	0
Chinese	***	***	***	***	***	0	***	***	0	0	***	***	24	0
<b>Total</b>	<b>1896</b>	<b>2030</b>	<b>2088</b>	<b>2216</b>	<b>1702</b>	<b>1631</b>	<b>1589</b>	<b>1536</b>	<b>1485</b>	<b>1700</b>	<b>1652</b>	<b>1926</b>	<b>21451</b>	<b>100</b>

**Table 4: Fairfield General Hospital ED: Total injury attendances by method of disposal and month, April 2013 to March 2014**

Disposal	Apr	May	Jun	Jul	Aug	Sep	Oct	Nov	Dec	Jan	Feb	Mar	Total	%
Discharged	1037	1163	1076	1249	1070	1086	1065	1025	857	968	941	1134	12671	59
Referral/follow-up	713	731	871	782	476	412	399	369	487	585	573	649	7047	33
Admitted	125	114	120	167	137	115	106	124	106	125	122	130	1491	7
Other	21	22	21	18	19	18	19	18	35	22	16	13	242	1
<b>Total</b>	<b>1896</b>	<b>2030</b>	<b>2088</b>	<b>2216</b>	<b>1702</b>	<b>1631</b>	<b>1589</b>	<b>1536</b>	<b>1485</b>	<b>1700</b>	<b>1652</b>	<b>1926</b>	<b>21451</b>	<b>100</b>

<sup>2</sup> White = Irish, British, other white background; Mixed = white and black, white and Asian, mixed other; Black = African, Caribbean, other black.

**Table 5: Fairfield General Hospital ED: Total injury attendances by method of disposal and injury group (excluding other injury), April 2013 to March 2014<sup>3</sup>**

Disposal	Assault		Bites and stings		Burns and scalds		DSH		Fall		RTC		Total	
	n	%	n	%	n	%	n	%	n	%	n	%	n	%
Discharged	541	60	218	67	161	41	186	61	1949	51	793	75	3848	56
Referral/follow-up	242	27	102	31	194	49	32	10	1076	28	254	21	1900	28
Admitted	52	6	5	2	21	5	59	19	697	18	22	3	856	13
Other	70	8	0	0	16	4	30	10	75	2	21	1	212	3
<b>Total</b>	<b>905</b>	<b>100</b>	<b>325</b>	<b>100</b>	<b>392</b>	<b>100</b>	<b>307</b>	<b>100</b>	<b>3797</b>	<b>100</b>	<b>1090</b>	<b>100</b>	<b>6816</b>	<b>100</b>

**Table 6: Fairfield General Hospital ED: Total injury attendances by mode of arrival and month, April 2013 to March 2014<sup>3</sup>**

Arrival mode	Apr	May	Jun	Jul	Aug	Sep	Oct	Nov	Dec	Jan	Feb	Mar	Total	%
Private transport	1358	1441	1473	1568	1182	1121	1053	1022	1007	1180	1138	1340	14883	69
Ambulance	304	352	364	376	347	308	308	313	298	299	318	335	3922	18
Taxi	81	83	73	84	53	58	73	70	51	57	53	88	824	4
Not recorded	64	61	57	71	52	62	58	44	33	58	43	56	659	3
Public transport	33	39	51	38	22	30	34	27	29	42	35	36	416	2
Foot	29	27	38	41	22	20	24	28	20	28	28	38	343	2
Police	13	17	16	22	12	13	16	15	23	19	16	20	202	1
Work transport	8	6	8	8	6	13	18	12	18	8	12	8	125	1
Other	***	***	***	***	6	***	***	***	***	<10	<10	5	47	0
Unknown	***	***	<10	***	0	***	***	***	***	***	***	0	30	0
<b>Total</b>	<b>1896</b>	<b>2030</b>	<b>2088</b>	<b>2216</b>	<b>1702</b>	<b>1631</b>	<b>1589</b>	<b>1536</b>	<b>1485</b>	<b>1700</b>	<b>1652</b>	<b>1926</b>	<b>21451</b>	<b>100</b>

**Table 7: Fairfield General Hospital ED: Total injury attendances by mode of arrival, gender and age group, April 2013 to March 2014<sup>3</sup>**

	Assault attendees (n=905)		All injuries (n=21,451)
	n	%	%
<b>Gender</b>			
Female	280	31	47
Male	625	69	53
<b>Mode of arrival</b>			
Ambulance	354	39	18
Other	551	61	82
<b>Age group</b>			
0 - 4	***	0	8
5-19	192	21	24
20 - 34	419	46	23
35 - 49	204	23	16
50 - 64	77	9	12
65 plus	<15	1	17

Published May 2014  
 Stuart Cole (TIIG researcher)  
 Centre for Public Health, Faculty of Education, Health and Community, Liverpool John Moores University  
 2<sup>nd</sup> Floor, Henry Cotton Campus, 15-21 Webster Street, Liverpool, L3 2ET  
 Contact: Jennifer Brizell, Tel: 0151 231 4500, Email: [j.s.brizell@ljmu.ac.uk](mailto:j.s.brizell@ljmu.ac.uk)  
 Website: [www.tiig.info](http://www.tiig.info) (please note all data requests should be made through the TIIG website)  
 Twitter: @TIIG\_CPH

<sup>3</sup> Please note that all numbers less than five have been suppressed (\*\*\*) in line with patient confidentiality and if there is only one number less than five in a category then two numbers will be suppressed at the next level.