



TIIG

INJURY SURVEILLANCE IN THE NORTH WEST OF ENGLAND

Injury attendances to Manchester Royal Infirmary Emergency Department

April 2012 to March 2013

This report summarises recorded injury attendances to Manchester Royal Infirmary Emergency Department (ED) between April 2012 and March 2013.

Between April 2012 and March 2013 there were 25,893 injury attendances to Manchester Royal Infirmary ED. Males accounted for close to six in ten (59%) of all attendances. The month with the highest attendances was October (n=2,482) ([Figure 1](#)). The majority (71%) of attendances were recorded as other accident; Road traffic collision (RTC) accounted for the highest proportion (11%) of specified injury groups followed by sports injury and assaults (both 8%) ([Table 1](#)).

For all injuries, the highest proportion of attendances were for persons aged 20-34 (36%) and 5-19 (24%) ([Figure 2](#)). Over half (56%) of assault attendees were aged 20-34. Forty five per cent of RTC attendees were aged 20-34. Close to two-thirds (63%) of sports injury attendees were aged 20-34 ([Figure 3](#)).

[Table 2](#) shows the arrival methods of attendances at Manchester Royal Infirmary ED. Eight in ten (80%) arrived by means other than an ambulance, while one in five (20%) arrived by ambulance.

The disposal of a patient can give an indication of the severity of the injuries sustained. Nearly half (46%) of attendees were discharged, almost a third (32%)

were referred and 12% were admitted ([Table 3](#)). Almost six in ten (57%) of RTC attendees were discharged while 8% were admitted. Over a third (35%) of deliberate self-harm (DSH) attendees were admitted ([Table 4](#)).

[Table 5](#) shows the ethnicity of attendees to Manchester Royal Infirmary ED. Almost six in ten (58%) were white, 9% were Pakistani and 7% were black.

[Table 6](#) presents data for assault attendees to Manchester Royal Infirmary ED. Almost three quarters (74%) of assault attendances were male and 56% were aged between 20 and 34 years.

Figure 1: Manchester Royal Infirmary ED: Total injury attendances by gender and month, April 2012 to March 2013

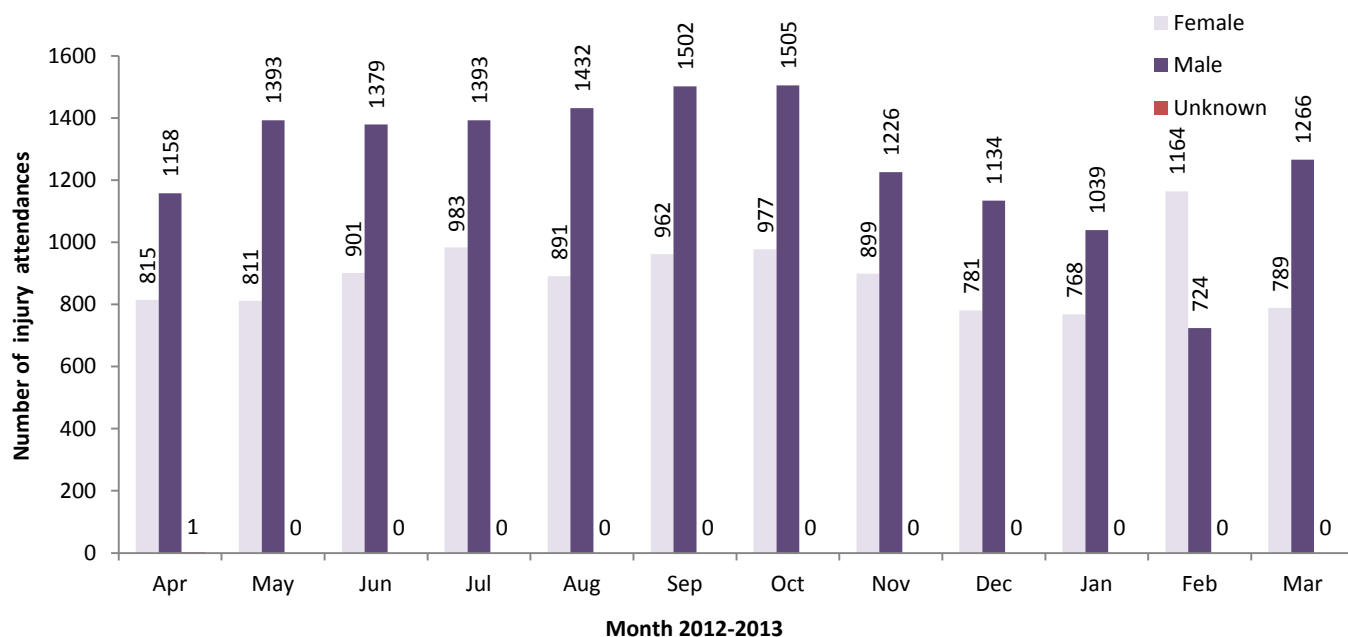


Table 1: Manchester Royal Infirmary ED: Total injury attendances by injury group and month, April 2012 to March 2013

Injury group	Apr	May	Jun	Jul	Aug	Sep	Oct	Nov	Dec	Jan	Feb	Mar	Total	%
Other accident	1449	1559	1625	1782	1701	1690	1772	1417	1382	1261	1312	1455	18405	71
RTC	175	209	251	241	230	282	248	286	221	190	196	195	2724	11
Sports injury	159	191	203	133	158	243	263	216	116	138	194	174	2188	8
Assault	146	196	159	165	183	192	166	168	158	165	138	181	2017	8
DSH	45	49	42	55	51	57	33	38	38	53	48	50	559	2
Total	1974	2204	2280	2376	2323	2464	2482	2125	1915	1807	1888	2055	25893	100

Figure 2: Manchester Royal Infirmary ED: Total injury attendances by age group and month, April 2012 to March 2013

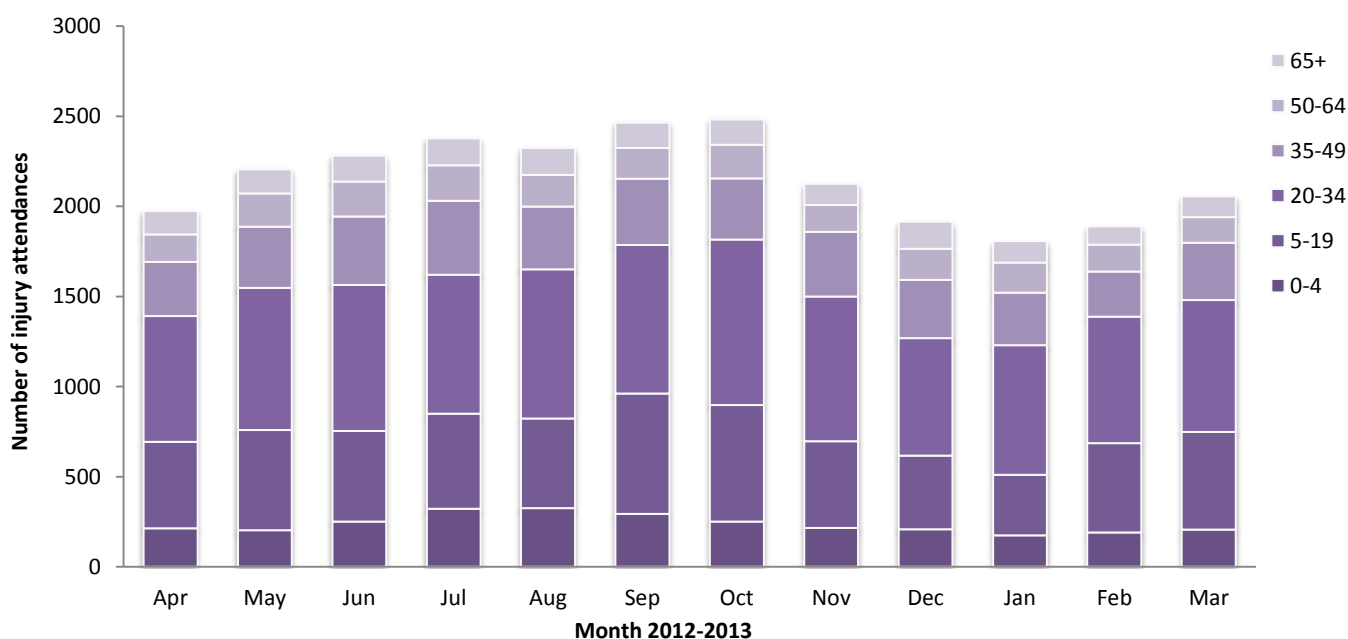


Figure 3: Manchester Royal Infirmary ED: Total injury attendances by age group and injury group (excluding other injury), April 2012 to March 2013

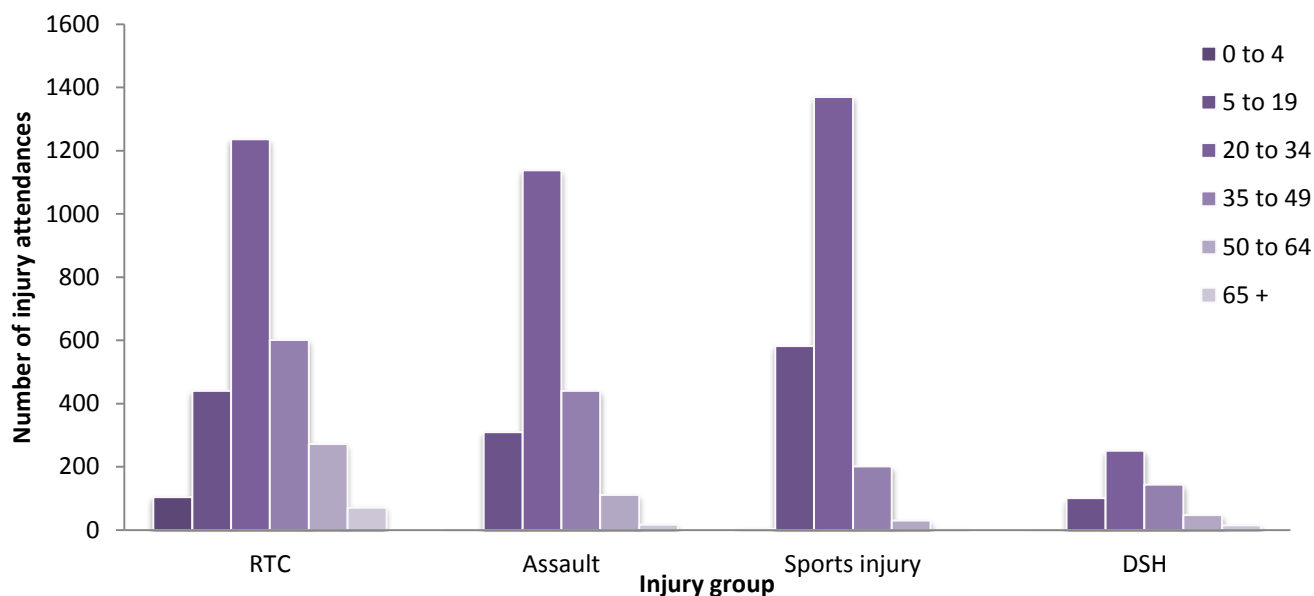


Table 2: Manchester Royal Infirmary ED: Total injury attendances by mode of arrival and month, April 2012 to March 2013

Arrival mode	Apr	May	Jun	Jul	Aug	Sep	Oct	Nov	Dec	Jan	Feb	Mar	Total	%
Other	1560	1730	1813	1893	1822	1957	2007	1661	1473	1449	1591	1664	20620	80
Ambulance	414	474	467	483	501	507	475	464	442	358	297	391	5273	20
Total	1974	2204	2280	2376	2323	2464	2482	2125	1915	1807	1888	2055	25893	100

Table 3: Manchester Royal Infirmary ED: Total injury attendances by method of disposal and month, April 2012 to March 2013

Disposal	Apr	May	Jun	Jul	Aug	Sep	Oct	Nov	Dec	Jan	Feb	Mar	Total	%
Discharged	994	1012	1012	1044	1035	1136	1163	959	820	788	914	935	11812	46
Referral/follow up	640	780	744	753	693	759	775	663	616	552	607	661	8243	32
Admitted	219	265	269	308	327	289	263	248	262	189	159	244	3042	12
Other	121	147	255	271	268	280	281	255	217	278	208	215	2796	11
Total	1974	2204	2280	2376	2323	2464	2482	2125	1915	1807	1888	2055	25893	100

Table 4: Manchester Royal Infirmary ED: Total injury attendances by method of disposal and injury group (excluding other injury), April 2012 to March 2013

Disposal	RTC		Assault		DSH		Sports injury		Total	
	n	%	n	%	n	%	n	%	n	%
Discharged	1555	57	778	39	120	21	966	44	3419	46
Referral/follow-up	151	6	219	11	23	4	684	31	1077	14
Admitted	209	8	295	15	195	35	87	4	786	10
Other	809	30	725	36	221	40	451	21	2206	29
Total	2724	100	2017	100	559	100	2188	100	7488	100

Table 5: Manchester Royal Infirmary ED: Total injury attendances by ethnicity and month, April 2012 to March 2013

Ethnicity	Apr	May	Jun	Jul	Aug	Sep	Oct	Nov	Dec	Jan	Feb	Mar	Total	%
White	1271	1372	1395	1424	1406	1566	1652	1310	1196	924	744	791	15051	58
Pakistani	159	193	230	225	225	228	213	204	191	108	120	137	2233	9
Not known	47	53	50	96	94	55	8	19	20	350	664	741	2197	8
Other ethnic group	145	189	211	191	178	172	181	188	138	113	81	99	1886	7
Black	144	155	175	172	167	193	186	181	154	137	105	111	1880	7
Mixed	59	67	53	85	78	83	69	60	57	59	58	45	773	3
Asian other	45	64	66	60	51	53	71	52	64	45	29	36	636	2
Indian	32	46	29	47	48	38	40	36	33	28	25	19	421	2
Not stated	17	28	13	23	30	17	9	19	26	27	37	48	294	1
Chinese	27	15	35	21	26	32	37	33	20	8	8	13	275	1
Bangladeshi	28	22	23	32	20	27	16	23	16	8	17	15	247	1
Total	1974	2204	2280	2376	2323	2464	2482	2125	1915	1807	1888	2055	25893	100

Table 6: Manchester Royal Infirmary ED: Total assault attendances by age group and gender, April 2012 to March 2013¹

Gender	Assault attendees (n=2,017)		All injuries (n=25,893)
	n	%	%
Female	534	26	41
Male	1483	74	59
Age group			
0 - 4	***	0	11
5 - 19	310	15	24
20 - 34	1138	56	36
35 - 49	440	22	16
50 - 64	111	6	8
65 plus	<20	1	6

Published August 2013

Jennifer Brizell (TIIG researcher)

Centre for Public Health, Faculty of Education, Health & Community, Liverpool John Moores University
2nd Floor, Henry Cotton Campus, 15-21 Webster Street, Liverpool, L3 2ET

Tel: 0151 231 4500 Email: j.s.brizell@ljmu.ac.uk

Website: www.tiig.info (please note all data requests should be made through the TIIG website)

¹ Please note that all numbers less than five have been suppressed in line with patient confidentiality and if there is only one number <5 in a category then two numbers will be suppressed at the next level.