

TIIG
INJURY SURVEILLANCE IN THE NORTH WEST OF ENGLAND

NORTH MANCHESTER GENERAL HOSPITAL EMERGENCY DEPARTMENT

MONTHLY BULLETIN: OCTOBER 2013 TO SEPTEMBER 2014

This bulletin provides a breakdown of all injury attendances to North Manchester General Hospital Emergency Department (ED) between October 2013 and September 2014.

During this twelve month period there were 32,778 injury attendances to the ED. The month with the highest attendances, calculated as a daily average, was June 2014 (104 per day) with December 2013 having the lowest attendances (79 per day; **Figure 1**).

Males accounted for over half (53%) of all attendances (**Figure 1**). The highest proportions of attendances were for persons aged between five and 19 years (25%) and between 20 and 34 years (22%; **Figure 2**).

The majority (61%) of attendances were recorded as other injury. Falls accounted for 23% of injury attendances, 6% were sustained from road traffic collisions (RTCs) and 4% from assaults (**Table 1**). Over a third (36%) of fall attendees were aged 65 years and above and over two-fifths (42%) of deliberate self-harm (DSH) attendees were aged between 20 and 34 years (**Figure 3**).

Table 2 shows the incident location of injury attendances. Over half (53%) of injuries occurred in the home, 16% occurred in a public place, 6% at an educational establishment and 4% at work. Over three quarters (79%) of DSH injuries and almost six in ten (57%) falls occurred in the home.

Table 3 shows the ethnicity of attendees to North Manchester General Hospital ED. Three-quarters

(75%) were White, 7% were Pakistani and 5% were Black.

The disposal of a patient can give an indication of the severity of the injuries sustained. Six in ten (60%) attendees were discharged with no follow-up treatment required, almost three in ten (29%) were referred for further treatment and 10% were admitted to hospital (**Table 4**). Three quarters (75%) of RTC attendees were discharged with no follow-up treatment required and 44% of burns and scalds attendees were referred for further treatment (**Table 5**).

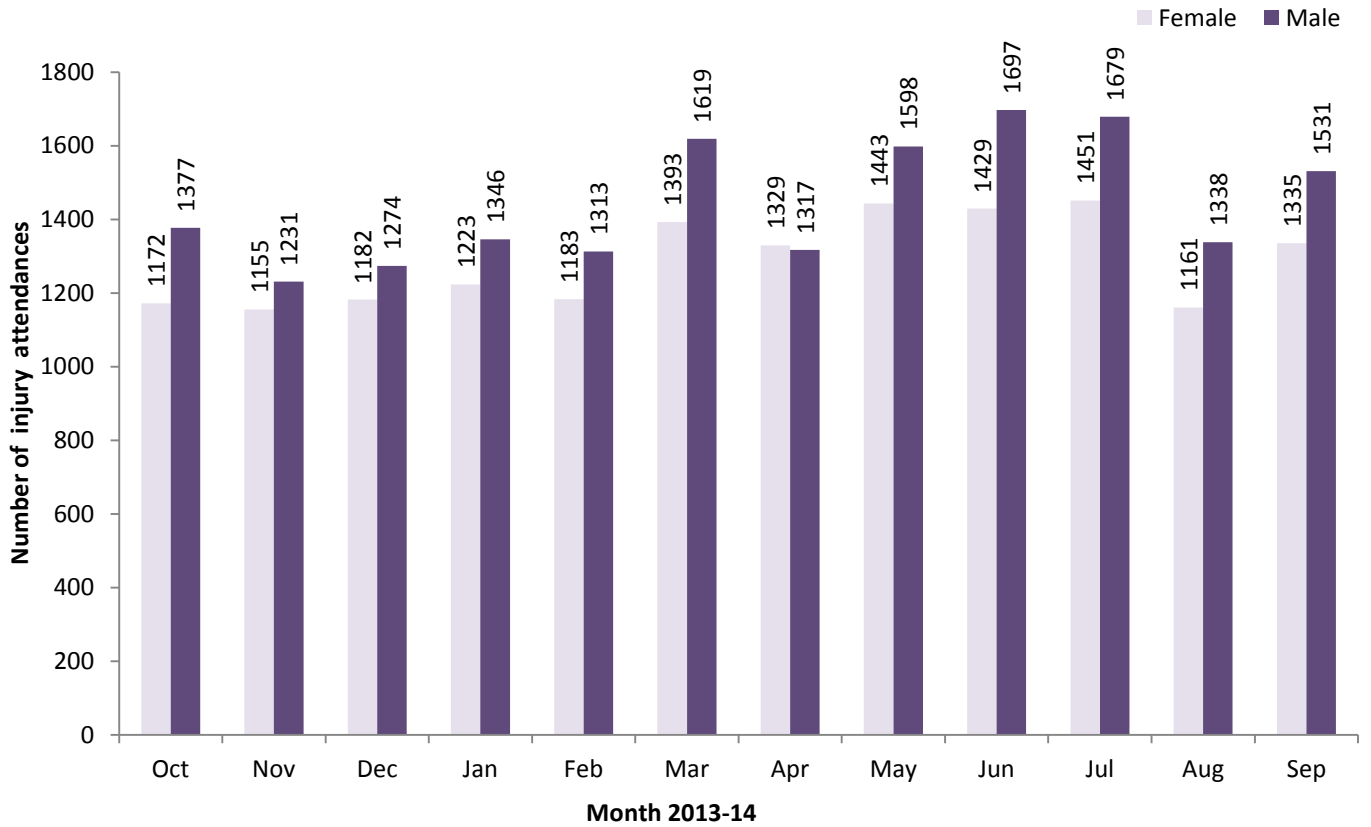
Table 6 shows the arrival method of attendances to North Manchester General Hospital ED. Almost seven in ten arrived by private transport (69%) while nearly a fifth (17%) arrived by ambulance.

Assault attendances

Between October 2013 and September 2014 there were 1,454 assault-related injury attendances to North Manchester General Hospital ED.

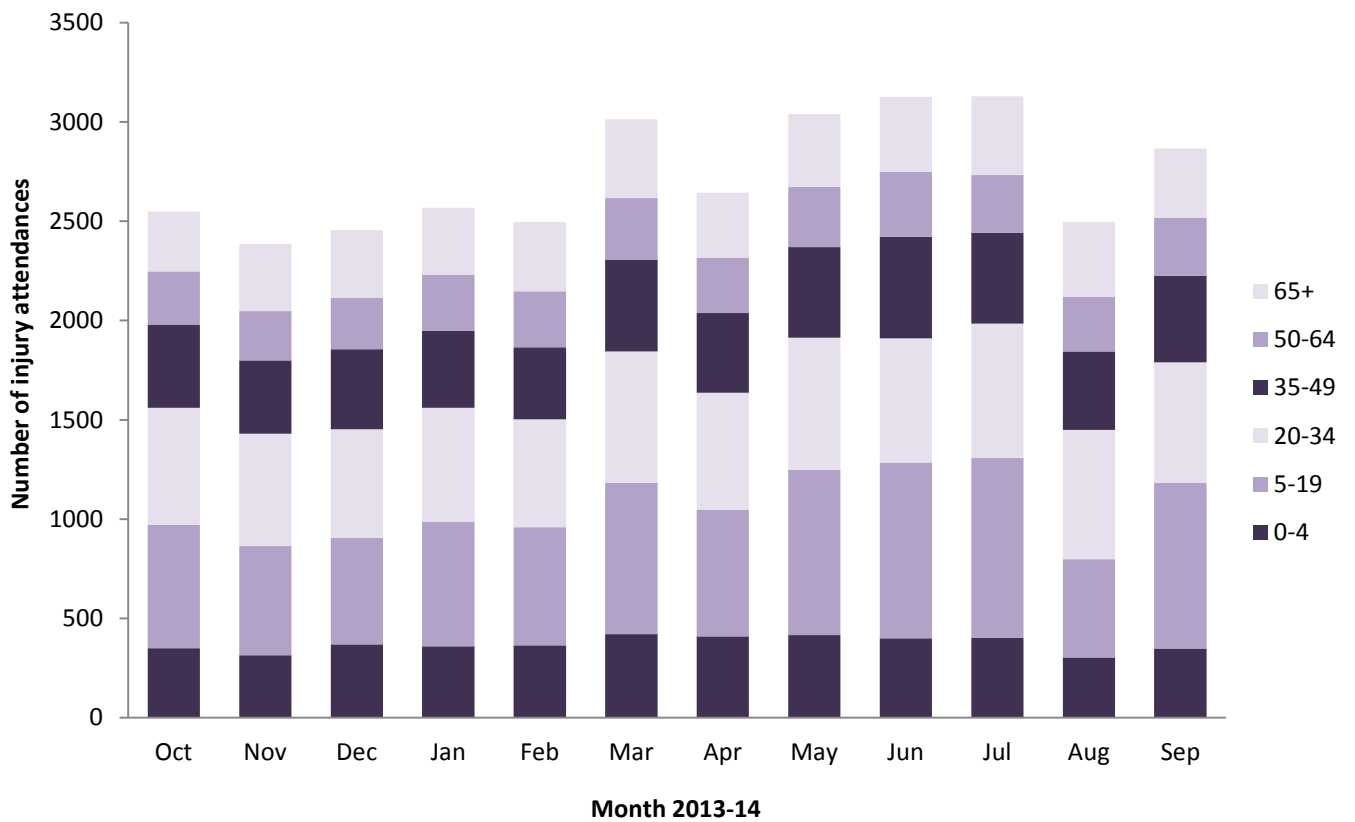
Seven in ten assault attendees were male (70%) and nearly half (45%) were aged between 20 to 34 years. Over two-fifths (43%) of assaults occurred in a public place (**Table 7**).

Figure 1: ED injury attendances by gender and month, October 2013 to September 2014[^]



[^]There were <5 records where the gender was unknown; these have been omitted from the chart.

Figure 2: ED injury attendances by age group and month, October 2013 to September 2014[§]

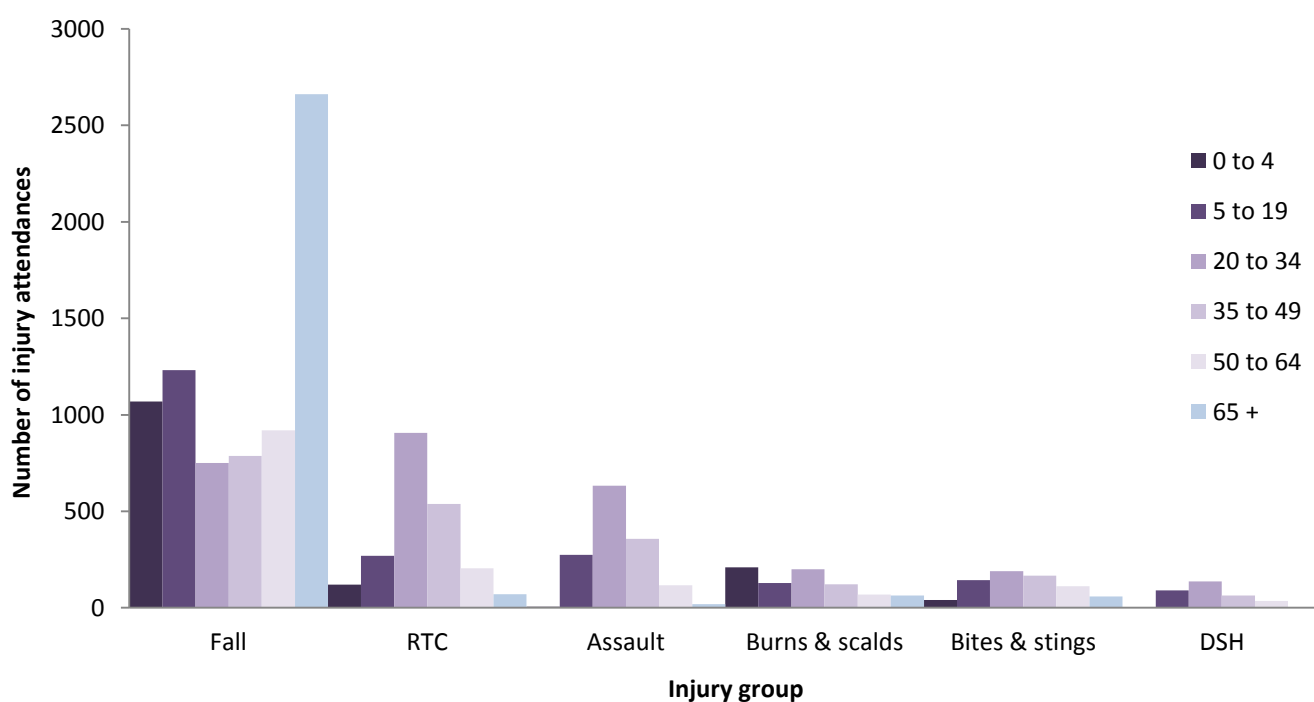


[§] There were 11 records where the age was unknown; these have been omitted from the chart.

Table 1: ED injury attendances by injury group and month, October 2013 to September 2014

Injury group	Oct	Nov	Dec	Jan	Feb	Mar	Apr	May	Jun	Jul	Aug	Sep	Total	%
Other injury	1474	1386	1380	1580	1567	1884	1562	1942	1912	1960	1489	1832	19968	61
Fall	573	591	631	587	569	659	615	638	723	682	558	593	7419	23
RTC	192	180	179	157	140	176	188	185	187	166	185	175	2110	6
Assault	137	107	157	118	86	160	123	116	128	108	114	100	1454	4
Burns & scalds	81	52	55	77	69	53	79	70	64	74	56	60	790	2
Bites & stings	58	51	32	32	34	55	55	61	78	103	73	78	710	2
DSH	34	19	22	18	31	27	24	29	34	37	24	28	327	1
Total	2549	2386	2456	2569	2496	3014	2646	3041	3126	3130	2499	2866	32778	100

Figure 3: ED injury attendances by age group and injury group (excluding other injury), October 2013 to September 2014[†]



[†] There were <5 records where the age was unknown; these have been omitted from the chart.

Table 2: ED injury attendances by location of incident and injury group, October 2013 to September 2014¹

Incident location	Assault		Bites & stings		Burns & scalds		DSH		Fall		RTC		Other injury		Total	
	n	%	n	%	n	%	n	%	n	%	n	%	n	%	n	%
Home	322	22	356	50	539	68	259	79	4226	57	89	4	11736	59	17527	53
Other	347	24	99	14	43	5	39	12	682	9	1921	91	2956	15	6087	19
Public place	627	44	186	26	34	4	23	7	1676	23	79	4	2542	13	5167	16
Educational establishment	42	3	8	1	5	1	***	0	412	6	***	0	1389	7	1858	6
Not recorded	15	1	<25	3	109	14	<10	2	257	3	16	1	408	2	832	3
Work	101	7	<40	5	60	8	0	0	166	2	***	0	937	5	1307	4
Total	1454	100	710	100	790	100	327	100	7419	100	2110	100	19968	100	32778	100

Table 3: ED injury attendances by ethnicity and month, October 2013 to September 2014^{1,2}

Ethnicity	Oct	Nov	Dec	Jan	Feb	Mar	Apr	May	Jun	Jul	Aug	Sep	Total	%
White	1893	1815	1843	1964	1921	2267	1981	2261	2309	2389	1910	2147	24700	75
Pakistani	185	174	177	167	179	209	185	234	236	200	170	180	2296	7
Black	138	111	121	116	110	146	118	134	168	166	115	169	1612	5
Any other ethnic group	113	103	115	112	108	120	110	123	131	144	88	128	1395	4
Not stated	100	70	75	87	74	111	109	122	116	87	90	100	1141	3
Mixed	51	53	57	59	45	78	65	68	63	55	66	61	721	2
Asian other	40	37	36	34	27	47	47	62	62	40	38	40	510	2
Indian	15	10	18	16	18	24	19	28	13	22	11	23	217	1
Chinese	11	10	9	<15	10	<15	9	5	21	18	6	14	133	0
Not recorded	***	***	***	***	***	***	***	***	<10	<10	***	***	30	0
Bangladeshi	***	***	***	0	***	0	***	***	***	***	***	***	23	0
Total	2549	2386	2456	2569	2496	3014	2646	3041	3126	3130	2499	2866	32778	100

Table 4: ED injury attendances by disposal method and month, October 2013 to September 2014³

Disposal method	Oct	Nov	Dec	Jan	Feb	Mar	Apr	May	Jun	Jul	Aug	Sep	Total	%
Discharged	1674	1555	1469	1568	1476	1678	1632	1788	1773	1829	1431	1750	19623	60
Referral/follow-up	601	551	676	701	728	1001	757	968	1008	944	766	820	9521	29
Admitted	216	235	272	273	268	305	229	251	296	306	256	264	3171	10
Other	58	45	39	27	24	30	28	34	49	51	46	32	463	1
Total	2549	2386	2456	2569	2496	3014	2646	3041	3126	3130	2499	2866	32778	100

¹ Please note that for all tables, all numbers less than five have been suppressed (with ***) in line with patient confidentiality. If there is only one number less than five in a category then two numbers will be suppressed to prevent back calculation from totals.

² White = Irish, British, other White background; Mixed = White and Black, White and Asian, mixed - any other; Black = African, Caribbean, other Black.

³ Admitted = admitted to hospital bed; Discharged = discharged - did not require any follow-up treatment; Referral/follow-up = discharged - follow-up treatment to be provided by GP, referred to ED clinic, referred to fracture clinic, referred to other out-patient clinic, transferred to other health care provider; Other = died in department, left department before being treated, left department having refused treatment.

Table 5: ED injury attendances by disposal method and injury group, October 2013 to September 2014¹

Disposal method	Assault		Bites & stings		Burns & scalds		DSH		Fall		RTC		Other injury		Total	
	n	%	n	%	n	%	n	%	n	%	n	%	n	%	n	%
Discharged	851	59	485	68	309	39	179	55	3771	51	1580	75	12448	62	19623	60
Referral/follow-up	295	20	199	28	347	44	39	12	1841	25	423	20	6377	32	9521	29
Admitted	176	12	<25	3	113	14	<70	20	1643	22	75	4	1077	5	3171	10
Other	132	9	***	1	21	3	<45	13	164	2	32	2	66	0	463	1
Total	1454	100	710	100	790	100	327	100	7419	100	2110	100	19968	100	32778	100

Table 6: ED injury attendances by arrival mode and month, October 2013 to September 2014¹

Arrival mode	Oct	Nov	Dec	Jan	Feb	Mar	Apr	May	Jun	Jul	Aug	Sep	Total	%
Private transport	1847	1686	1699	1781	1790	2080	1825	2166	2165	2125	1644	1970	22778	69
Ambulance	448	476	520	475	462	513	438	448	494	510	469	453	5706	17
Other	77	66	80	103	73	116	105	164	147	112	93	50	1186	4
Foot	37	23	27	40	26	115	122	86	175	136	105	152	1044	3
Taxi	43	37	57	59	41	85	61	77	60	92	83	108	803	2
Not recorded	45	56	27	51	47	45	54	42	47	74	51	76	615	2
Public transport	31	26	24	43	36	35	27	34	21	52	30	46	405	1
Police	21	<20	<25	<20	<20	<25	<15	<25	<20	24	18	<10	209	1
Work transport	0	***	***	***	***	***	***	***	***	5	6	***	32	0
Total	2549	2386	2456	2569	2496	3014	2646	3041	3126	3130	2499	2866	32778	100

ASSAULTS

Table 7: ED assault attendances by gender, incident location and age group, October 2013 to September 2014*

Gender	Assault attendances (n=1,454)		All injury attendances (n=32,778)
	n	%	%
Male	1015	70	53
Female	439	30	47
Incident location	n	%	%
Home	322	22	53
Other	347	24	19
Public place	627	43	16
Educational establishment	42	3	6
Work	101	7	4
Not recorded	15	1	3
Age group	n	%	%
0 - 4	<10	0	14
5 - 19	282	19	25
20 - 34	656	45	22
35 - 49	369	25	15
50 - 64	122	8	10
65 plus	19	1	2

* There were <5 records where the age was unknown; these have been omitted from the table.

Published January 2015

Trauma and Injury Intelligence Group

Centre for Public Health, Faculty of Education, Health and Community, Liverpool John Moores University,
2nd Floor, Henry Cotton Building, Liverpool L3 2ET

T: 0151 231 4498 | E: tiig@ljmu.ac.uk | W: www.tiig.info and www.cph.org.uk | Twitter: [www.twitter.com/tiig_cph](https://twitter.com/tiig_cph)