

## Injury attendances to North Manchester General Hospital Emergency Department

### April 2009 to March 2010

This report summarises recorded injury attendances to North Manchester General Hospital Emergency Department (ED) between April 2009 and March 2010.

Between April 2009 and March 2010 there were 29,807 injury attendances to North Manchester General Hospital ED. Males accounted for over half (54%) of all attendances. The month with the highest attendances was September (n=2,803) with April (n=1,695) having the lowest attendances (**Figure 1**). The majority (60%) of attendances were recorded as other injury. Of the specified injury groups falls (23%) accounted for the highest proportion followed by road traffic collision (RTC) (6%) and assault (4%) (**Table 1**).

For all injuries the highest proportion of attendances were for persons aged 20 to 34 (25%) and 5 to 19 (23%) (**Figure 2**). A third (34%) of fall attendees were aged 65 or over. Nearly half (46%) of assault attendees were aged 20 to 34. Half (50%) of deliberate self harm (DSH) attendees were aged 20 to 34 (**Figure 3**).

**Table 2** shows the location of the incident of injury attendances. Nearly a half (48%) of all injuries occurred in the home. Nearly a fifth (18%) of injuries occurred in a public place with a smaller proportion occurring at work (4%) or at an educational establishment (4%). Nearly half (47%) of assaults

occurred in a public place. Half (50%) of falls occurred in the home. Over two-fifths (42%) of bites and stings occurred at home.

**Table 3** shows the ethnicity of attendees to North Manchester General Hospital ED. Over three-quarters (79%) were white, 6% were Pakistani and 4% were black.

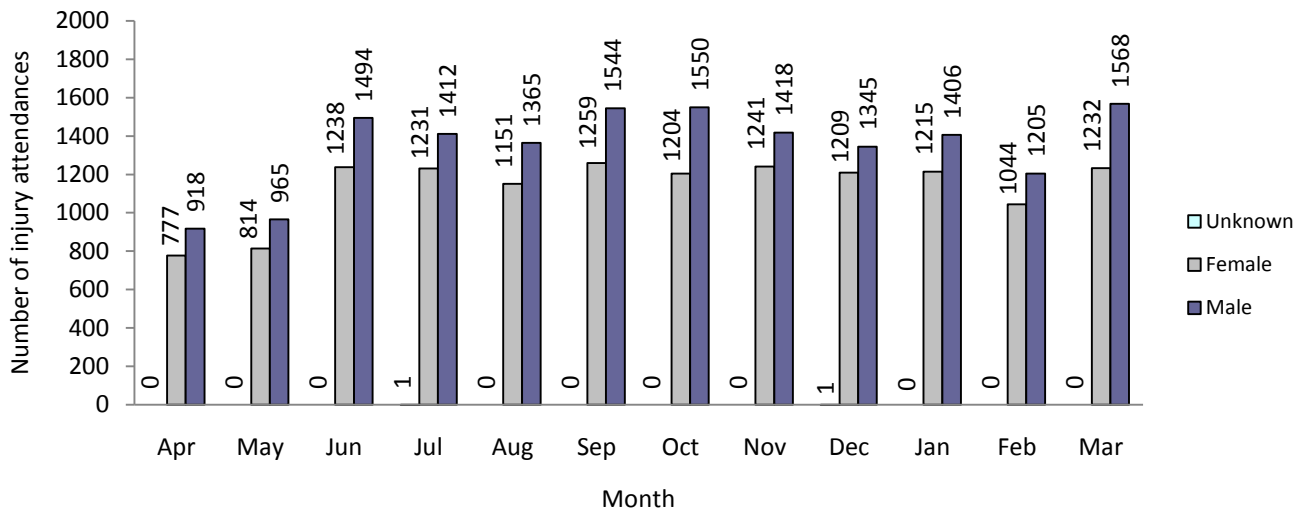
The disposal of a patient can give an indication of the severity of the injuries sustained. Nearly six in ten (58%) of attendees were discharged, almost a third (31%) were referred and 8% were admitted (**Table 4**). Nearly three-quarters (72%) of RTC attendees were discharged. Over one in six (17%) of fall attendees were admitted. Over half (55%) of burn/scald attendees had a referral (**Table 5**).

**Table 6** shows the arrival methods of attendances at North Manchester General Hospital ED. Seven in ten (70%) arrived by private transport while one in six (17%) arrived by ambulance.

**Figure 4 (a-d)** shows crude rates of attendance at North Manchester General Hospital ED by attendee's area of residence, in this case Middle Super Output Area (MSOA). The MSOAs with the highest crude rates are indicated beneath each figure.<sup>1</sup>

<sup>1</sup> Population figures are drawn from mid-2008 population estimates from the Office for National Statistics.

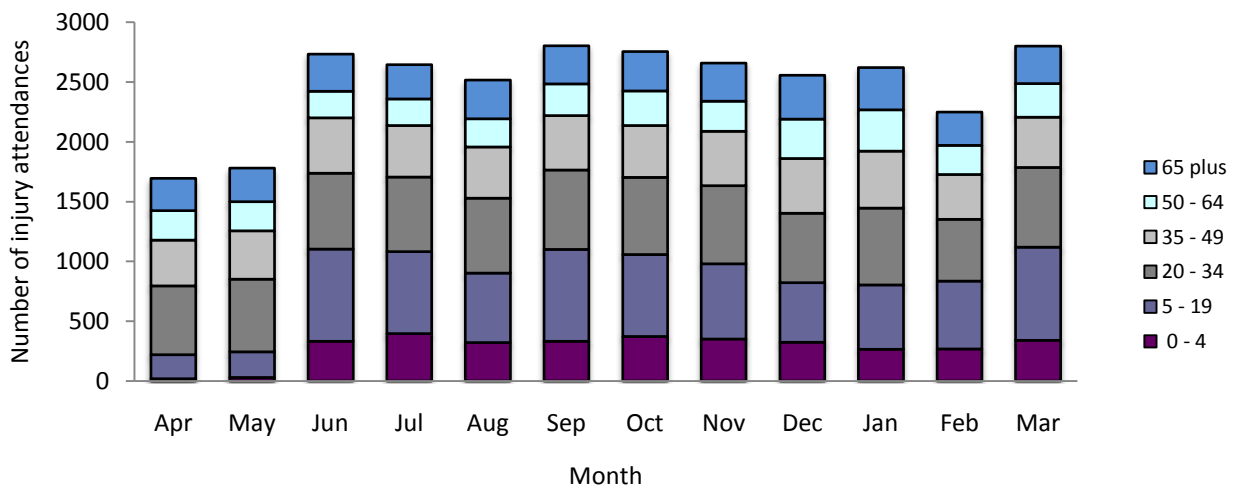
**Figure 1: North Manchester General Hospital ED: Total injury attendances by gender and month, April 2009 to March 2010**



**Table 1: North Manchester General Hospital ED: Total injury attendances by injury group and month, April 2009 to March 2010<sup>2</sup>**

Injury group	Apr	May	Jun	Jul	Aug	Sep	Oct	Nov	Dec	Jan	Feb	Mar	Total	%
Other injury	924	959	1639	1644	1431	1796	1791	1683	1435	1443	1394	1837	17976	60
Fall	453	449	631	509	609	536	565	518	766	770	493	541	6840	23
RTC	116	149	151	148	118	166	172	187	136	168	155	187	1853	6
Assault	93	125	97	99	132	123	85	89	88	116	93	127	1267	4
Burns & scalds	49	41	112	110	86	74	71	118	86	65	61	51	924	3
Bites & stings	45	42	86	122	126	87	57	48	27	38	25	30	733	2
DSH	15	14	16	12	14	21	13	16	17	21	28	27	214	1
<b>Total</b>	<b>1695</b>	<b>1779</b>	<b>2732</b>	<b>2644</b>	<b>2516</b>	<b>2803</b>	<b>2754</b>	<b>2659</b>	<b>2555</b>	<b>2621</b>	<b>2249</b>	<b>2800</b>	<b>29807</b>	<b>100</b>

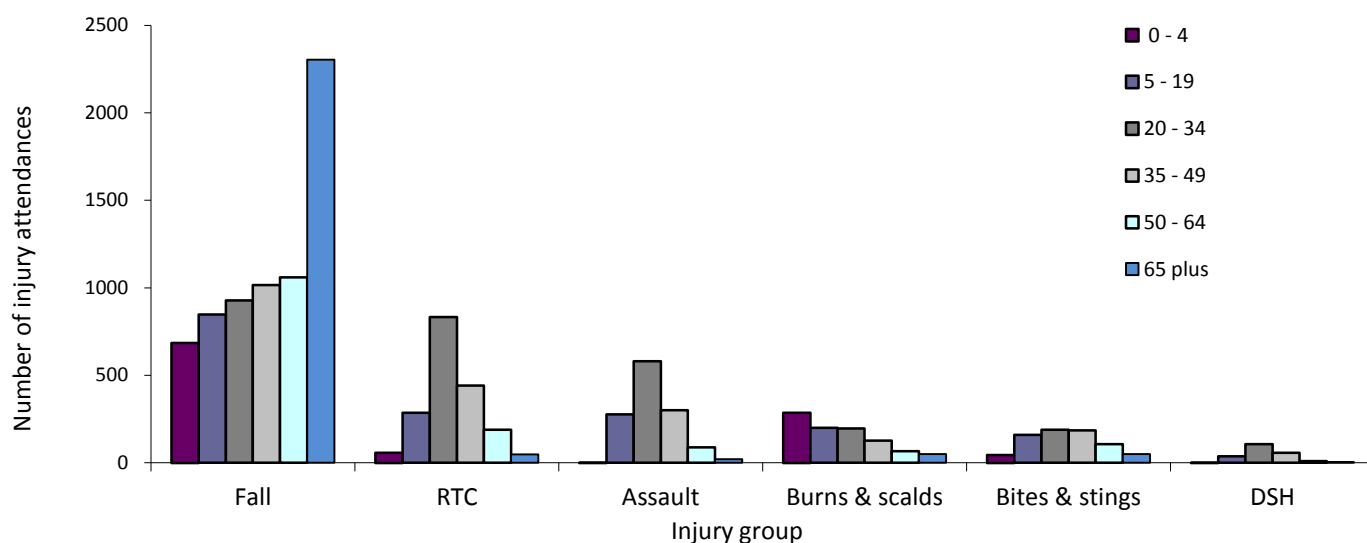
**Figure 2: North Manchester General Hospital ED: Total injury attendances by age group and month, April 2009 to March 2010<sup>3</sup>**



<sup>2</sup> Due to low numbers Firework injury (n=3), Sports injury (n=11) and Electrical Accident (n=4) have been included in Other injury. In addition 'Stabbing' has been included in the assault data due to relatively low numbers.

<sup>3</sup> The children's wards for North Manchester General Hospital opened in June 2009. This accounts for the lower number of attendances for April and May 2009.

**Figure 3: North Manchester General Hospital ED: Total injury attendances by age group and injury group, April 2009 to March 2010**



**Table 2: North Manchester General Hospital ED: Total injury attendances by location of incident and injury group, April 2009 to March 2010<sup>4</sup>**

Location	Assault		Bites & stings		Burns & scalds		DSH		Fall		Other injury		RTC		Total	
	n	%	n	%	n	%	n	%	n	%	n	%	n	%	n	%
Home	302	24	307	42	431	47	180	84	3421	50	9681	54	80	4	14402	48
Other	240	19	152	21	76	8	23	11	664	10	3455	19	1697	92	6307	21
Public place	597	47	203	28	22	2	9	4	1997	29	2484	14	56	3	5368	18
Educational establishment	41	3	6	1	9	1	***	***	174	3	1087	6	***	***	1317	4
Work	52	4	36	5	51	6	***	***	193	3	975	5	***	***	1310	4
Unknown	35	3	29	4	335	36	***	***	391	6	294	2	***	***	1103	4
<b>Total</b>	<b>1267</b>	<b>100</b>	<b>733</b>	<b>100</b>	<b>924</b>	<b>100</b>	<b>214</b>	<b>100</b>	<b>6840</b>	<b>100</b>	<b>17976</b>	<b>100</b>	<b>1853</b>	<b>100</b>	<b>29807</b>	<b>100</b>

**Table 3: North Manchester General Hospital ED: Total injury attendances by ethnicity and month, April 2009 to March 2010<sup>5</sup>**

Ethnicity	Apr	May	Jun	Jul	Aug	Sep	Oct	Nov	Dec	Jan	Feb	Mar	Total	%
White	1418	1428	2140	2022	2029	2263	2151	2095	1987	2054	1773	2184	23544	79
Pakistani	82	99	136	161	115	143	154	142	165	176	125	154	1652	6
Not stated	46	64	195	165	118	123	121	139	107	109	112	115	1414	5
Black	54	64	99	103	101	88	121	107	113	88	84	126	1148	4
Any other ethnic group	35	42	59	60	48	63	68	67	74	85	66	81	748	3
Any other Asian background	22	34	30	53	36	25	51	41	44	44	38	53	471	2
Mixed	11	25	35	44	33	61	37	37	36	30	27	49	425	1
Indian	15	12	21	13	16	18	26	16	13	17	13	25	205	1
Chinese	***	9	12	12	13	13	19	9	10	6	***	9	122	0
Not known	7	***	***	***	***	***	***	***	***	7	***	***	61	0
Bangladeshi	***	***	***	***	***	***	***	***	***	5	***	***	17	0
<b>Total</b>	<b>1695</b>	<b>1779</b>	<b>2732</b>	<b>2644</b>	<b>2516</b>	<b>2803</b>	<b>2754</b>	<b>2659</b>	<b>2555</b>	<b>2621</b>	<b>2249</b>	<b>2800</b>	<b>29807</b>	<b>100</b>

<sup>4</sup> Please note that all numbers less than five have been suppressed in line with patient confidentiality and if there is only one number <5 in a category then two numbers will be suppressed at the next level.

<sup>5</sup> White = Irish, British, other white background; Mixed = white and black, white and Asian, mixed any other; Other = any other ethnic group, any other Asian background; Black = African, Caribbean, other black.

**Table 4: North Manchester General Hospital ED: Total injury attendances by method of disposal and month, April 2009 to March 2010<sup>6</sup>**

Disposal	Apr	May	Jun	Jul	Aug	Sep	Oct	Nov	Dec	Jan	Feb	Mar	Total	%
Discharged	949	944	1548	1360	1521	1678	1699	1632	1469	1523	1333	1779	17435	58
Referred/ follow-up	536	620	931	1023	748	858	790	779	801	822	685	759	9352	31
Admitted	158	166	188	196	203	205	214	195	217	234	182	205	2363	8
Other	52	49	65	65	44	62	51	53	68	42	49	57	657	2
<b>Total</b>	<b>1695</b>	<b>1779</b>	<b>2732</b>	<b>2644</b>	<b>2516</b>	<b>2803</b>	<b>2754</b>	<b>2659</b>	<b>2555</b>	<b>2621</b>	<b>2249</b>	<b>2800</b>	<b>29807</b>	<b>100</b>

**Table 5: North Manchester General Hospital ED: Total injury attendances by method of disposal and injury group, April 2009 to March 2010**

Disposal	Assault		Bites & stings		Burns & scalds		DSH		Fall		Other injury		RTC		Total	
	n	%	n	%	n	%	n	%	n	%	n	%	n	%	n	%
Discharged	675	53	400	55	315	34	90	42	3498	51	11119	62	1338	72	17435	58
Referred/follow-up	298	24	300	41	507	55	25	12	1915	28	5918	33	389	21	9352	31
Admitted	148	12	28	4	59	6	52	24	1170	17	835	5	71	4	2363	8
Other	146	12	5	1	43	5	47	22	257	4	104	1	55	3	657	2
<b>Total</b>	<b>1267</b>	<b>100</b>	<b>733</b>	<b>100</b>	<b>924</b>	<b>100</b>	<b>214</b>	<b>100</b>	<b>6840</b>	<b>100</b>	<b>17976</b>	<b>100</b>	<b>1853</b>	<b>100</b>	<b>29807</b>	<b>100</b>

**Table 6: North Manchester General Hospital ED: Total injury attendances by mode of arrival and month, April 2009 to March 2010**

Mode	Apr	May	Jun	Jul	Aug	Sep	Oct	Nov	Dec	Jan	Feb	Mar	Total	%
Private transport	1035	1189	1942	1810	1753	2038	1968	1876	1807	1840	1599	1971	20828	70
Ambulance	335	374	453	411	462	415	448	426	456	451	359	436	5026	17
Other	120	63	82	144	73	117	108	158	86	134	99	148	1332	4
Not recorded	77	51	114	103	82	77	85	94	88	61	40	45	917	3
Taxi	39	48	46	72	51	55	38	32	45	46	56	66	594	2
Foot	52	33	59	48	56	50	42	40	41	32	52	54	559	2
Public transport	26	14	19	38	21	35	40	23	15	35	28	41	335	1
Police	8	***	7	9	14	11	15	***	11	16	8	15	124	0
Unknown	***	***	7	6	***	***	5	***	5	***	5	21	62	0
Work transport	***	***	***	***	***	***	***	***	***	***	***	***	***	***
Helicopter	***	***	***	***	***	***	***	***	***	***	***	***	***	***
<b>Total</b>	<b>1695</b>	<b>1779</b>	<b>2732</b>	<b>2644</b>	<b>2516</b>	<b>2803</b>	<b>2754</b>	<b>2659</b>	<b>2555</b>	<b>2621</b>	<b>2249</b>	<b>2800</b>	<b>29807</b>	<b>100</b>

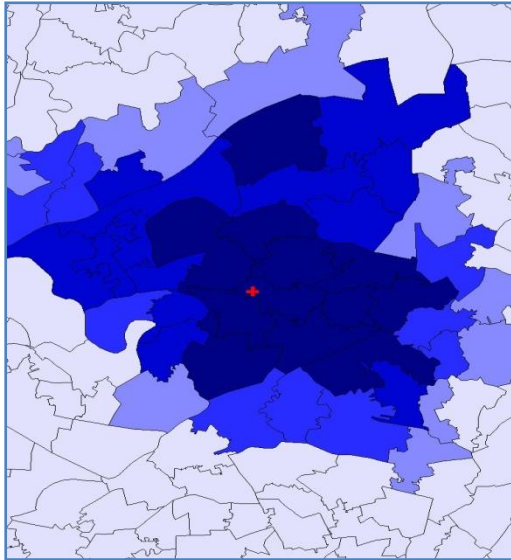
For further information please contact: Centre for Public Health, Research Directorate, Liverpool John Moores University, 3rd Floor, Henry Cotton Building, 15-21 Webster Street, Liverpool, L3 2ET, Tel: 0151 231 4513 or Email: [i.j.warren@ljmu.ac.uk](mailto:i.j.warren@ljmu.ac.uk)  
 Website: [www.tiig.info](http://www.tiig.info) (data requests should be made through the website)

<sup>6</sup> Admitted=admitted to hospital/became a lodged patient of the same health care provider; Discharged=discharged - did not require any follow up treatment; Referral/follow-up =discharged - follow up treatment to be provided by GP, referred to ED clinic, referred to fracture clinic, referred to other out-patient clinic, referred to other health care professional; Other=died in department, left department before being treated, left department having refused treatment, other.

**Figure 4a,b,c,d: Middle Super Output Area of residence for injury attendances to North Manchester General Hospital ED. Quintiles of crude rates per 1,000 population, April 2009 to March 2010**

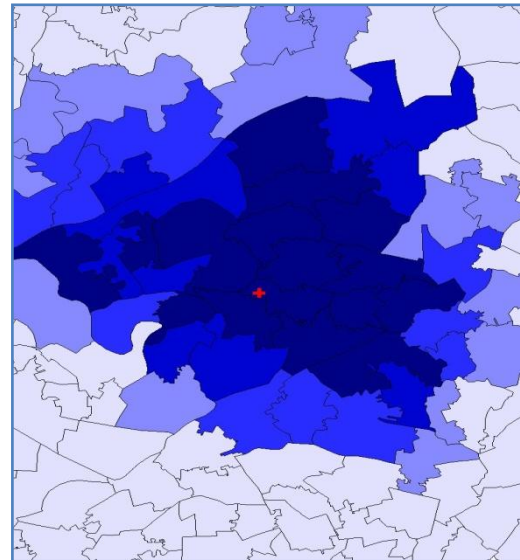
a) All injury attendances: quintiles of crude rates per 1,000 population    b) Fall: quintiles of crude rates per 1,000 population

**+** North Manchester General Hospital AED



1	1 (0.00 – 4.89)	MSOA E02001046 (184.33)
2	2 (4.90 – 14.08)	MSOA E02001050 (169.33)
3	3 (14.09 – 50.83)	MSOA E02001045 (168.64)
4	4 (50.84 – 99.81)	MSOA E02001053 (165.96)
5	5 (99.82 – 184.33)	

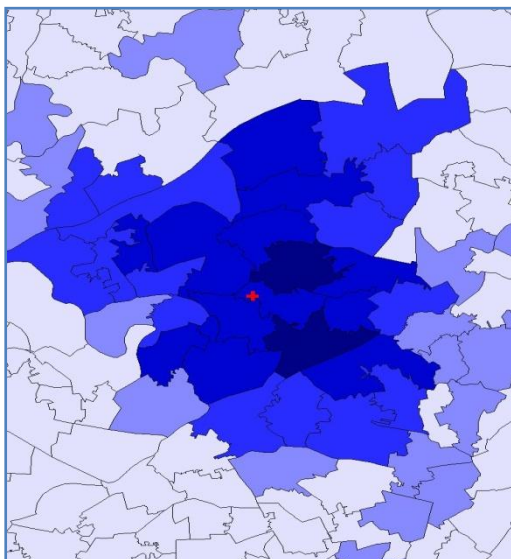
**+** North Manchester General Hospital AED



1	1 (0.00 – 0.74)	MSOA E02001046 (39.99)
2	2 (0.75 – 3.03)	MSOA E02001045 (38.18)
3	3 (3.04 – 11.48)	MSOA E02001050 (35.39)
4	4 (11.49 – 24.21)	MSOA E02001053 (35.24)
5	5 (24.22 – 39.99)	

c) Assault: quintiles of crude rates per 1,000 population

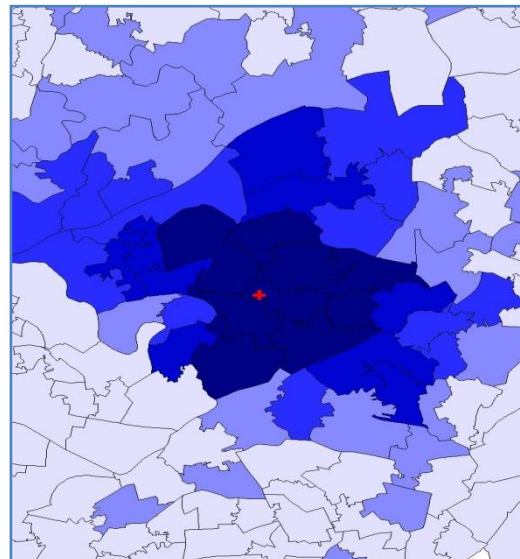
**+** North Manchester General Hospital AED



1	1 (0.00 – 0.22)	MSOA E02001053 (10.66)
2	2 (0.23 – 1.27)	MSOA E02001046 (9.51)
3	3 (1.28 – 3.70)	MSOA E02001050 (6.94)
4	4 (3.71 – 6.93)	MSOA E02001051 (6.87)
5	5 (6.94 – 10.66)	

d) RTC: quintiles of crude rates per 1,000 population

**+** North Manchester General Hospital AED



1	1 (0.00 – 0.28)	MSOA E02001052 (12.55)
2	2 (0.29 – 1.48)	MSOA E02001045 (12.45)
3	3 (1.49 – 3.82)	MSOA E02001048 (10.46)
4	4 (3.83 – 7.38)	MSOA E02001053 (10.06)
5	5 (7.39 – 12.55)	