

Injury attendances to North Manchester General Hospital Emergency Department

April 2010 to March 2011

This report summarises recorded injury attendances to North Manchester General Hospital Emergency Department (ED) between April 2010 and March 2011.

Between April 2010 and March 2011 there were 32,907 injury attendances to North Manchester General Hospital ED. Males accounted for over half (54%) of all attendances. The month with the highest attendances was May (n=3,141) with November (n=2,364) having the lowest attendances ([Figure 1](#)). The majority (62%) of attendances were recorded as other injury. Of the specified injury groups, falls (21%) accounted for the highest proportion followed by road traffic collision (RTC) (7%) ([Table 1](#)).

For all injuries the highest proportion of attendances were for persons aged 5 to 19 (26%) and 20 to 34 (24%) ([Figure 2](#)). Over a third (35%) of fall attendees were aged 65 or over. Nearly half (45%) of deliberate self harm (DSH) attendees were aged 20 to 34 ([Figure 3](#)).

[Table 2](#) shows the location of the incident of injury attendances. Over a half (52%) of all injuries occurred in the home. Nearly a fifth (16%) of injuries occurred in a public place with a smaller proportion occurring at an educational establishment (5%) or at work (4%).

[Table 3](#) shows the ethnicity of attendees to North Manchester General Hospital ED. Over three-quarters

(78%) were white, 6% were Pakistani and 4% were black.

The disposal of a patient can give an indication of the severity of the injuries sustained. Nearly six in ten (58%) attendees were discharged, over three in ten (31%) were referred and 9% were admitted ([Table 4](#)). Over seven in ten (71%) of RTC attendees were discharged ([Table 5](#)).

[Table 6](#) shows the arrival methods of attendances at North Manchester General Hospital ED. Seven in ten (71%) arrived by private transport while one in six (17%) arrived by ambulance.

[Table 7](#) presents data for assault attendances to North Manchester ED. 73% of attendees were male, over four in ten (44%) were aged 20-34 years, nearly half (45%) of assaults occurred in a public place, and over a quarter (26%) attended the ED on weekend nights.

[Figure 4 \(a-d\)](#) shows crude rates of attendance at North Manchester General Hospital ED by attendee's area of residence, in this case Middle Super Output Area (MSOA). The MSOAs with the highest crude rates are indicated beneath each figure.¹

¹ Population figures are drawn from mid-2008 population estimates from the Office for National Statistics.

Figure 1: North Manchester General Hospital ED: Total injury attendances by gender and month, April 2010 to March 2011

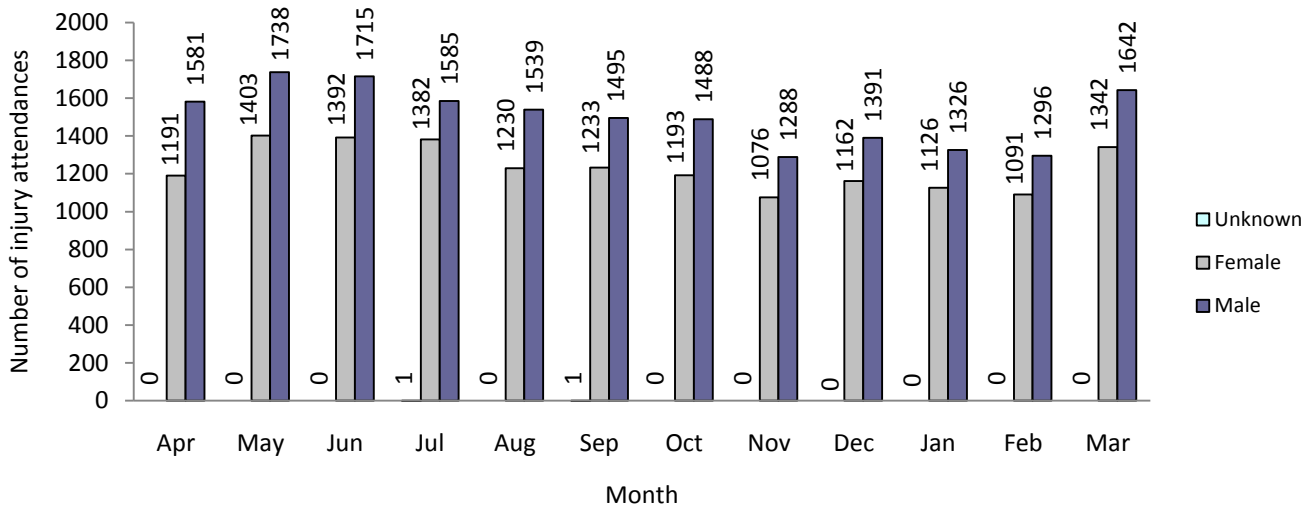
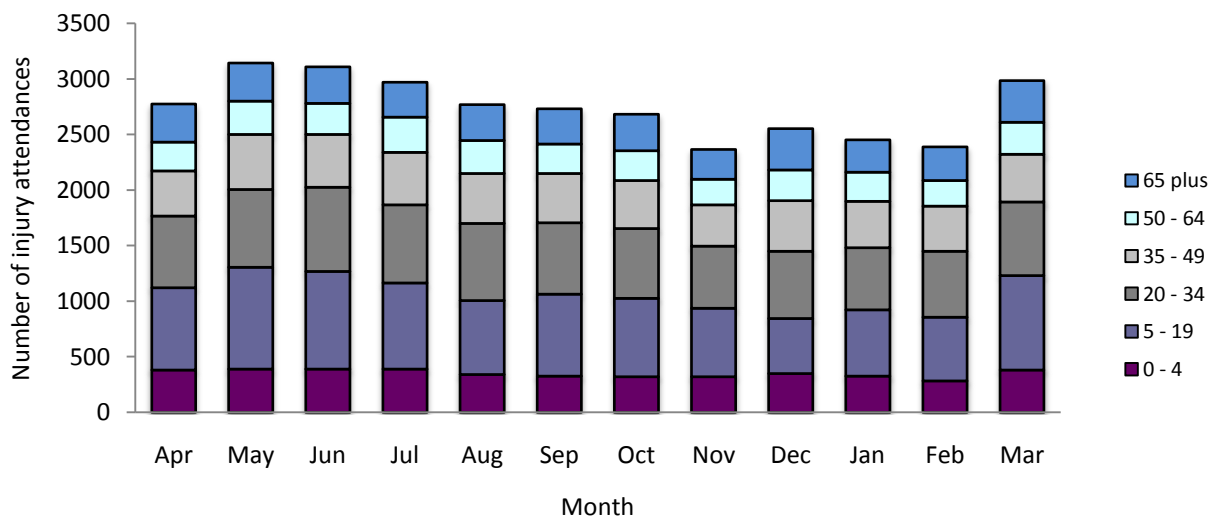


Table 1: North Manchester General Hospital ED: Total injury attendances by injury group and month, April 2010 to March 2011²

Injury group	Apr	May	Jun	Jul	Aug	Sep	Oct	Nov	Dec	Jan	Feb	Mar	Total	%
Other injury	1777	2050	1992	1891	1702	1672	1630	1417	1422	1499	1513	1958	20523	62
Fall	593	632	619	576	570	562	538	486	692	512	468	613	6861	21
RTC	173	158	210	183	206	207	223	209	216	190	183	165	2323	7
Assault	117	120	98	119	137	126	143	115	106	126	107	116	1430	4
Burns & scalds	55	91	75	71	58	75	77	83	68	58	63	65	839	3
Bites & stings	40	61	81	96	61	65	46	35	38	38	24	38	623	2
DSH	17	29	32	32	35	22	24	19	11	29	29	29	308	1
Total	2772	3141	3107	2968	2769	2729	2681	2364	2553	2452	2387	2984	32907	100

Figure 2: North Manchester General Hospital ED: Total injury attendances by age group and month, April 2010 to March 2011



² Due to low numbers firework injury (n=3), sports injury (n=11) and electrical aAccident (n=4) have been included in other injury. In addition 'stabbing' has been included in the assault data due to relatively low numbers (n=74).

Figure 3: North Manchester General Hospital ED: Total injury attendances by age group and injury group, April 2010 to March 2011

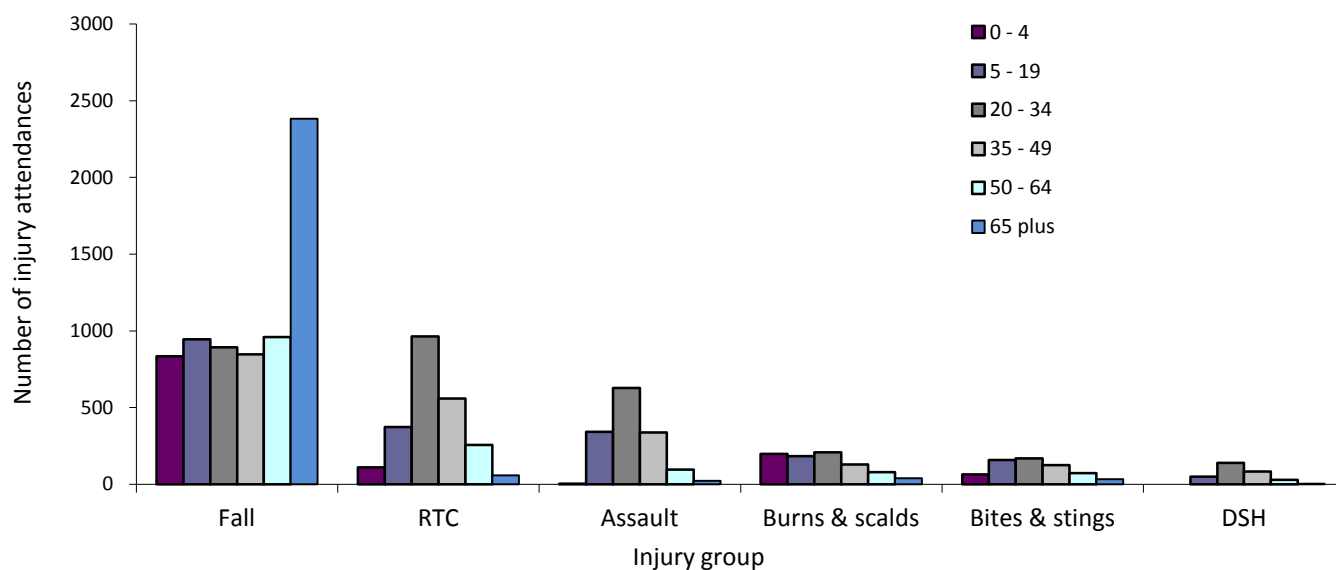


Table 2: North Manchester General Hospital ED: Total injury attendances by location of incident and injury group, April 2010 to March 2011³

Location	Assault		Bites & stings		Burns & scalds		DSH		Fall		Other injury		RTC		Total	
	n	%	n	%	n	%	n	%	n	%	n	%	n	%	n	%
Home	346	24	298	48	505	60	216	70	3770	55	11700	57	206	9	17041	52
Other	327	23	111	18	88	10	58	19	723	11	3471	17	2012	87	6790	21
Public place	636	44	176	28	22	3	28	9	1695	25	2764	13	79	3	5400	16
Educational establishment	36	3	10	2	8	1	***	0	207	3	1417	7	***	0	1681	5
Work	58	4	20	3	66	8	***	0	172	3	904	4	***	0	1230	4
Unknown	27	2	8	1	150	18	***	1	294	4	267	1	***	1	765	2
Total	1430	100	623	100	839	100	308	100	6861	100	20523	100	2323	100	32907	100

Table 3: North Manchester General Hospital ED: Total injury attendances by ethnicity and month, April 2010 to March 2011⁴

Ethnicity	Apr	May	Jun	Jul	Aug	Sep	Oct	Nov	Dec	Jan	Feb	Mar	Total	%
White	2169	2475	2406	2312	2195	2161	2079	1822	1904	1871	1859	2322	25575	78
Pakistani	162	184	206	187	143	166	158	146	174	158	134	186	2004	6
Black	107	135	140	117	102	106	127	102	133	115	115	116	1415	4
Not stated	116	112	147	110	105	90	85	96	95	102	95	126	1279	4
Any other ethnic group	94	110	90	123	109	102	100	81	112	105	79	99	1204	4
Asian other	51	45	50	42	33	41	61	47	61	46	46	58	581	2
Mixed	31	42	34	46	44	39	43	40	45	33	31	40	468	1
Indian	18	23	24	13	21	16	18	20	14	10	15	27	219	1
Chinese	17	10	***	12	12	***	7	8	13	8	11	8	117	0
Not known	***	***	***	***	***	***	***	***	***	***	***	***	33	0
Bangladeshi	***	***	***	***	***	***	***	***	***	***	***	***	12	0
Total	2772	3141	3107	2968	2769	2729	2681	2364	2553	2452	2387	2984	32907	100

³ Please note that all numbers less than five have been suppressed in line with patient confidentiality and if there is only one number <5 in a category then two numbers will be suppressed at the next level.

⁴ White = Irish, British, other white background; Mixed = white and black, white and Asian, mixed any other; Other = any other ethnic group, any other Asian background; Black = African, Caribbean, other black.

Table 4: North Manchester General Hospital ED: Total injury attendances by method of disposal and month, April 2010 to March 2011⁵

Disposal	Apr	May	Jun	Jul	Aug	Sep	Oct	Nov	Dec	Jan	Feb	Mar	Total	%
Discharged	1648	1779	1784	1766	1492	1614	1595	1330	1415	1450	1367	1798	19038	58
Referral/follow-up	829	1052	1039	901	911	802	750	756	803	696	721	865	10125	31
Admitted	222	248	237	248	302	260	279	230	265	250	254	271	3066	9
Other	73	62	47	53	64	53	57	48	70	56	45	50	678	2
Total	2772	3141	3107	2968	2769	2729	2681	2364	2553	2452	2387	2984	32907	100

Table 5: North Manchester General Hospital ED: Total injury attendances by method of disposal and injury group, April 2010 to March 2011

Disposal	Assault		Bites & stings		Burns & scalds		DSH		Fall		Other injury		RTC		Total	
	n	%	n	%	n	%	n	%	n	%	n	%	n	%	n	%
Admitted	213	15	***	***	***	***	82	27	1412	21	1165	6	94	4	3066	9
Referral/follow-up	302	21	205	33	398	47	36	12	1731	25	6958	34	495	21	10125	31
Discharged	740	52	395	63	336	40	128	42	3489	51	12309	60	1641	71	19038	58
Other	175	12	***	***	***	***	62	20	229	3	91	0	93	4	678	2
Total	1430	100	623	100	839	100	308	100	6861	100	20523	100	2323	100	32907	100

Table 6: North Manchester General Hospital ED: Total injury attendances by mode of arrival and month, April 2010 to March 2011

Mode	Apr	May	Jun	Jul	Aug	Sep	Oct	Nov	Dec	Jan	Feb	Mar	Total	%
Private transport	2087	2338	2227	2120	1931	1968	1830	1676	1714	1715	1636	2145	23387	71
Ambulance	454	457	506	521	512	450	513	429	509	472	421	506	5750	17
Other	90	151	137	106	96	64	96	66	100	78	110	148	1242	4
Taxi	36	55	68	57	58	53	80	50	74	51	70	52	704	2
Foot	31	57	56	62	63	71	42	35	42	36	42	34	571	2
Not recorded	28	31	42	44	45	54	45	47	46	34	48	43	507	2
Public transport	25	32	41	37	33	58	52	37	39	36	40	41	471	1
Police	10	12	21	14	16	5	11	14	15	11	10	7	146	0
Unknown	9	7	5	6	11	***	10	7	8	15	8	***	94	0
Work transport	***	***	***	***	***	***	***	***	***	***	***	***	33	0
Helicopter	***	***	***	***	***	***	***	***	***	***	***	***	2	0
Total	2772	3141	3107	2968	2769	2729	2681	2364	2553	2452	2387	2984	32907	100

⁵ Admitted=admitted to hospital/became a lodged patient of the same health care provider; Discharged=discharged - did not require any follow up treatment; Referral/follow-up=discharged - follow up treatment to be provided by GP, referred to ED clinic, referred to fracture clinic, referred to other out-patient clinic, referred to other health care professional; Other=died in department, left department before being treated, left department having refused treatment, other.

Table 7: North Manchester General Hospital ED: Assault attendances by gender, incident location, age group and day/time of attendance, April 2010 to March 2011

	Assault attendees		All injuries % (n=32,907)
Sex			
Female	381	27	46
Male	1049	73	54
Location			
Public place	636	45	16
Home	346	24	52
Other	327	23	21
Work	58	4	4
Educational establishment	36	3	5
Not recorded	27	2	2
Age group			
0 - 4	***	0	13
5 - 19	342	24	26
20 - 34	627	44	24
35 - 49	339	23	16
50 - 64	95	7	10
65 plus	***	2	12
Day & time			
Weekend nights*	372	26	8
Weekend days	261	18	22
Weekdays	797	56	70

*8pm to 4am, Friday night/Saturday morning; Saturday night/Sunday morning; Sunday night/Monday morning.

Author: Ian Warren, Published May 2011

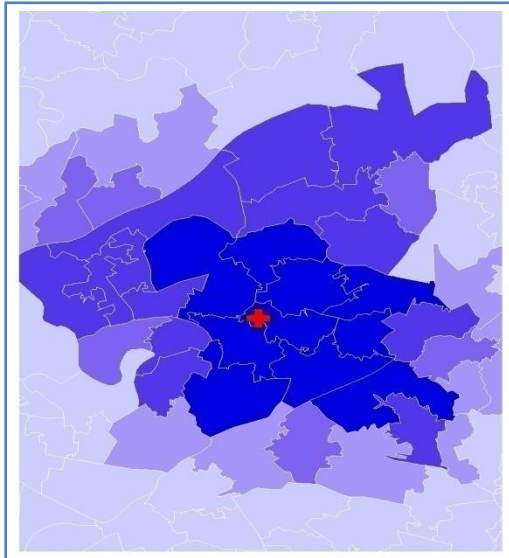
For further information please contact: Centre for Public Health, Research Directorate, Liverpool John Moores University, 2nd Floor, Henry Cotton Building, 15-21 Webster Street, Liverpool, L3 2ET, Tel: 0151 231 4513 or Email: i.j.warren@ljmu.ac.uk

Website: www.tig.info (data requests should be made through the website)

Figure 4a,b,c,d: Middle Super Output Area of residence for injury attendances to North Manchester General Hospital ED. Quintiles of crude rates per 1,000 population, April 2010 to March 2011

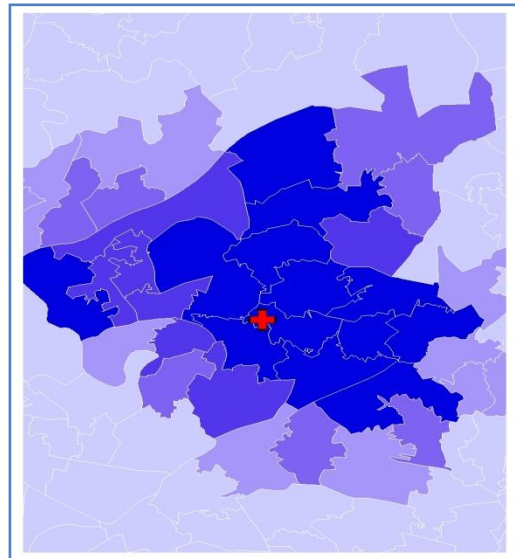
a) All injury attendances: quintiles of crude rates per 1,000 population b) Fall: quintiles of crude rates per 1,000 population

+ North Manchester General Hospital ED



1 (0.00 – 19.93)	MSOA E02001052 (580.32)
2 (19.94 – 78.55)	MSOA E02001050 (558.69)
3 (78.56 – 165.78)	MSOA E02001046 (546.77)
4 (165.79 – 360.92)	MSOA E02001053 (525.39)
5 (360.93 – 580.32)	

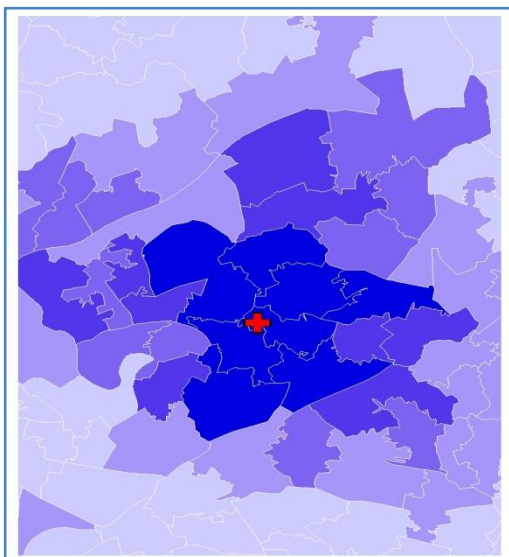
+ North Manchester General Hospital ED



1 (0.00 – 2.28)	MSOA E02001045 (40.22)
2 (2.29 – 8.26)	MSOA E02001049 (36.43)
3 (8.27 – 16.96)	MSOA E02001050 (36.25)
4 (16.97 – 26.74)	MSOA E02001048 (36.20)
5 (26.75 – 40.22)	

c) RTC: quintiles of crude rates per 1,000 population

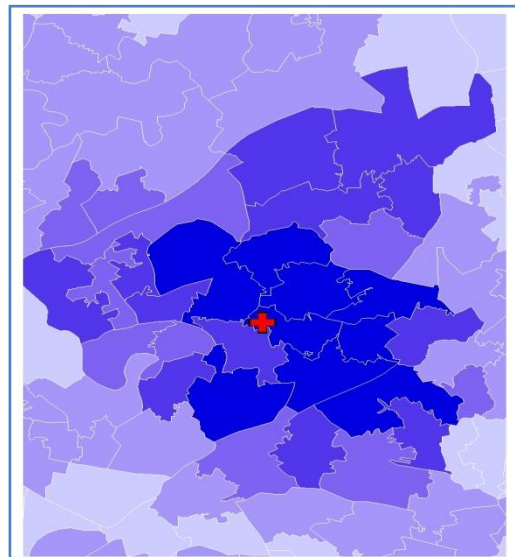
+ North Manchester General Hospital ED



1 (0.00 – 0.57)	MSOA E02001052 (17.90)
2 (0.58 – 2.29)	MSOA E02001046 (13.22)
3 (2.30 – 5.18)	MSOA E02001054 (12.94)
4 (5.19 – 8.14)	MSOA E02001048 (12.80)
5 (8.15 – 17.90)	

d) Assault: quintiles of crude rates per 1,000 population

+ North Manchester General Hospital ED



1 (0.00 – 0.14)	MSOA E02001050 (10.62)
2 (0.15 – 0.91)	MSOA E02001053 (9.85)
3 (0.92 – 2.34)	MSOA E02001046 (8.41)
4 (2.35 – 5.68)	MSOA E02001051 (7.84)
5 (5.69 – 10.62)	