

## Injury attendances to North Manchester General Hospital Emergency Department

### July 2010 to June 2011

This report summarises recorded injury attendances to North Manchester General Hospital Emergency Department (ED) between July 2010 and June 2011.

Between July 2010 and June 2011 there were 32,563 injury attendances to North Manchester General Hospital ED. Males accounted for over half (55%) of all attendances. The month with the highest attendances was May (n=2,991) with November (n=2,364) having the lowest attendances ([Figure 1](#)). The majority (62%) of attendances were recorded as other injury. Of the specified injury groups falls (21%) accounted for the highest proportion followed by road traffic collision (RTC) (7%) ([Table 1](#)).

For all injuries the highest proportion of attendances were for persons aged 5 to 19 (26%) and 20 to 34 (23%) ([Figure 2](#)). Over a third (35%) of fall attendees were aged 65 or over. Two-fifths (40%) of deliberate self harm (DSH) attendees were aged 20 to 34 ([Figure 3](#)).

[Table 2](#) shows the location of the incident of injury attendances. Over a half (52%) of all injuries occurred in the home. Nearly a fifth (16%) of injuries occurred in a public place with a smaller proportion occurring at an educational establishment (5%) or at work (4%). Over half (56%) of falls occurred in the home.

[Table 3](#) shows the ethnicity of attendees to North Manchester General Hospital ED. Over three-quarters

(78%) were white, 6% were black and 4% were Pakistani.

The disposal of a patient can give an indication of the severity of the injuries sustained. Nearly six in ten (58%) attendees were discharged, three in ten (30%) were referred and 10% were admitted ([Table 4](#)). Over seven in ten (72%) of RTC attendees were discharged ([Table 5](#)).

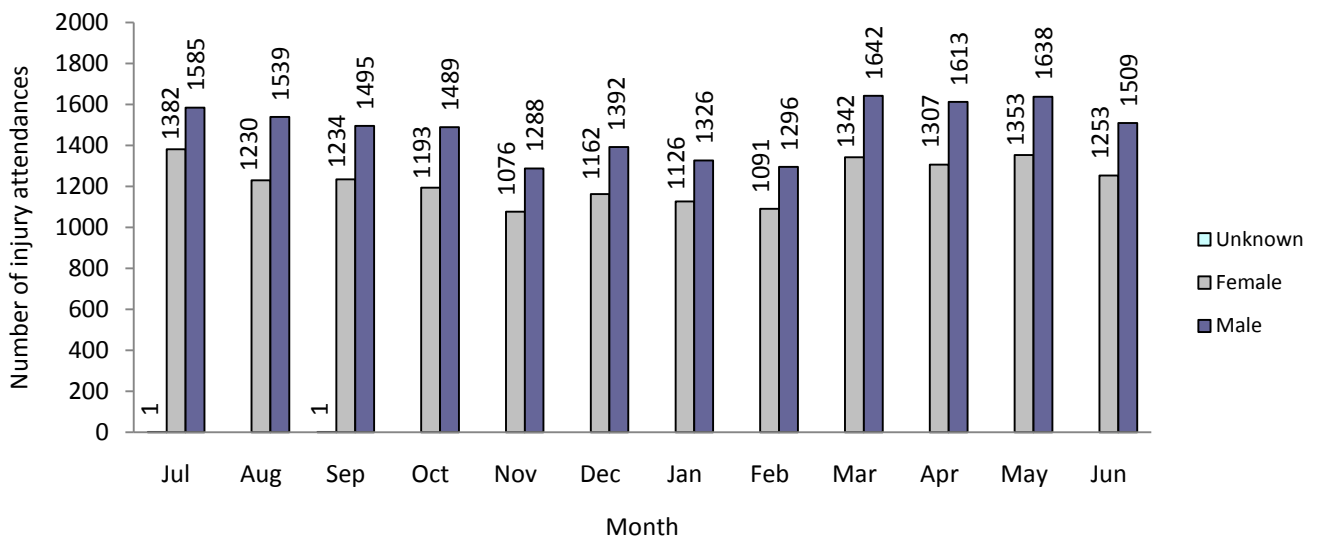
[Table 6](#) shows the arrival method of attendances at North Manchester General Hospital ED. Seven in ten (70%) arrived by private transport while nearly a fifth (18%) arrived by ambulance.

[Table 7](#) presents data for assault attendances to North Manchester ED. 73% of attendees were male, over two-fifths (43%) of assaults occurred in a public place, and over a fifth (21%) attended the ED on weekend nights.

[Figure 4 \(a-d\)](#) shows crude rates of attendance at North Manchester General Hospital ED by attendee's area of residence, in this case Middle Super Output Area (MSOA). The MSOAs with the highest crude rates are indicated beneath each figure.<sup>1</sup>

<sup>1</sup> Population figures are drawn from mid-2008 population estimates from the Office for National Statistics.

**Figure 1: North Manchester General Hospital ED: Total injury attendances by gender and month, July 2010 to June 2011**

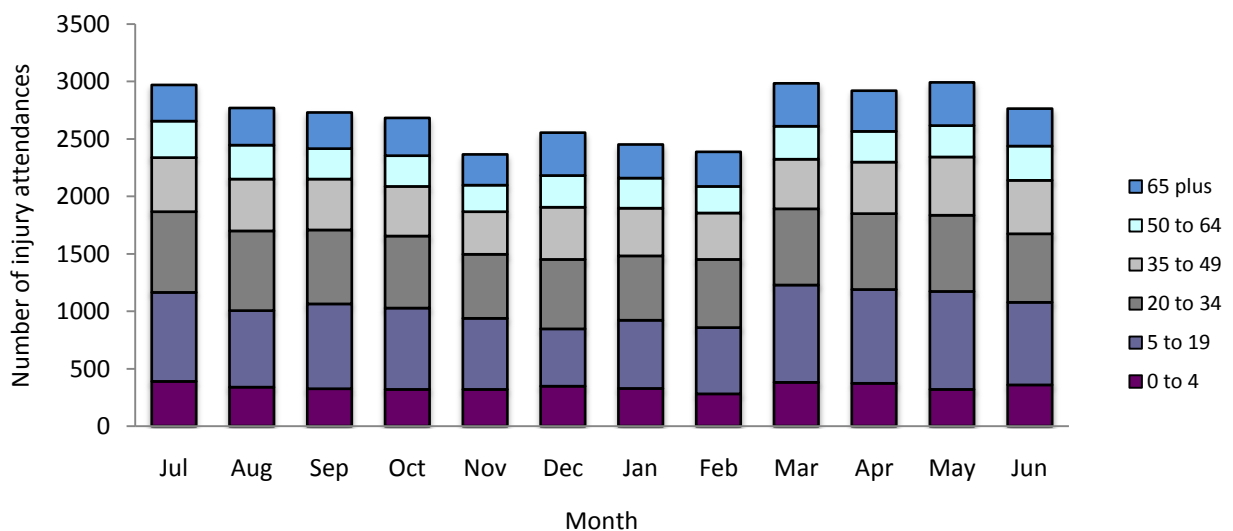


**Table 1: North Manchester General Hospital ED: Total injury attendances by injury group and month, July 2010 to June 2011<sup>2\*</sup>**

Injury group	Jul	Aug	Sep	Oct	Nov	Dec	Jan	Feb	Mar	Apr	May	Jun	Total	%
Other injury	1891	1702	1673	1631	1417	1423	1499	1513	1958	1733	1927	1776	20143	62
Fall	576	570	562	538	486	692	512	468	613	716	557	548	6838	21
RTC	183	206	207	223	209	216	190	183	165	163	206	158	2309	7
Assault	119	137	126	143	115	106	126	107	116	150	138	97	1480	5
Burns and scalds	71	58	75	77	83	68	58	63	65	59	62	81	820	3
Bites and stings	96	61	65	46	35	38	38	24	38	64	57	77	639	2
DSH	32	35	22	24	19	11	29	29	29	35	44	25	334	1
<b>Total</b>	<b>2968</b>	<b>2769</b>	<b>2730</b>	<b>2682</b>	<b>2364</b>	<b>2554</b>	<b>2452</b>	<b>2387</b>	<b>2984</b>	<b>2920</b>	<b>2991</b>	<b>2762</b>	<b>32563</b>	<b>100</b>

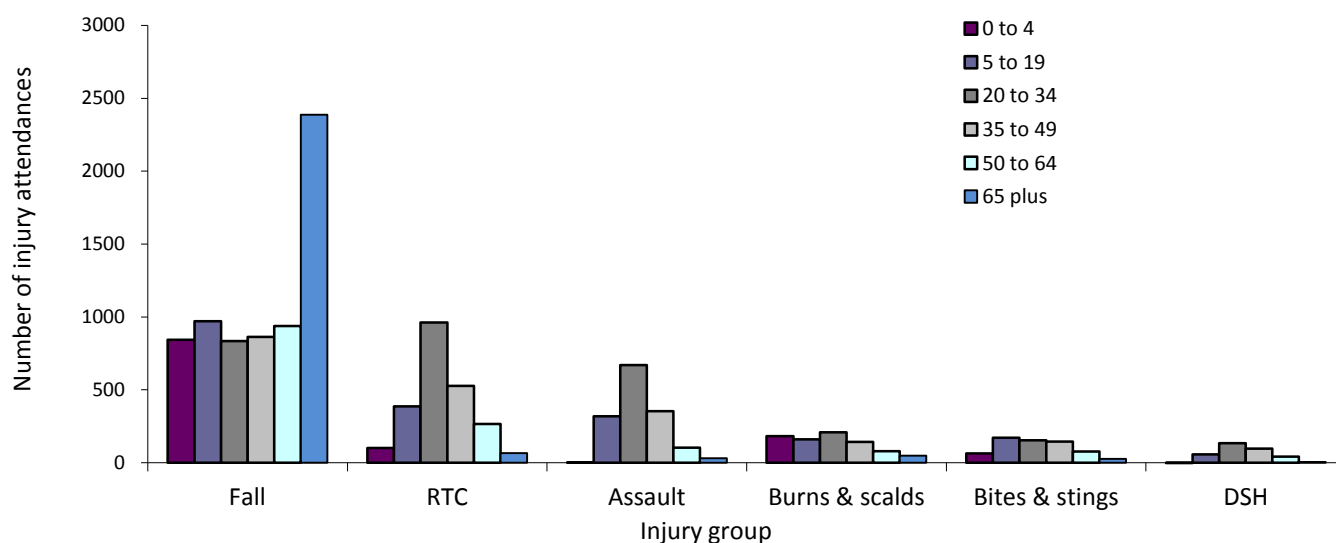
\*Percentages may not equal 100 due to rounding.

**Figure 2: North Manchester General Hospital ED: Total injury attendances by age group and month, July 2010 to June 2011**



<sup>2</sup> Due to low numbers firework injury (n=8), sports injury (n=1), drowning/immersion (n=2) and electrical accident (n=31) have been included in other injury. In addition stabbing (n=3) has been included in the assault data due to relatively low numbers.

**Figure 3: North Manchester General Hospital ED: Total injury attendances by age group and injury group (excluding other injury), July 2010 to June 2011**



**Table 2: North Manchester General Hospital ED: Total injury attendances by location of incident and injury group, July 2010 to June 2011<sup>3\*</sup>**

Location	Assault		Bites & stings		Burns & scalds		DSH		Fall		Other injury		RTC		Total	
	n	%	n	%	n	%	n	%	n	%	n	%	n	%	n	%
Home	381	26	307	48	494	60	230	69	3847	56	11448	57	209	9	16916	52
Other	343	23	121	19	79	10	66	20	699	10	3446	17	2006	87	6760	21
Public place	638	43	161	25	24	3	30	9	1606	23	2609	13	66	3	5134	16
Educational establishment	30	2	12	2	9	1	***	***	213	3	1352	7	***	***	1619	5
Work	51	3	20	3	62	8	***	***	151	2	893	4	***	***	1184	4
Not recorded	37	3	18	3	152	19	6	2	322	5	395	2	20	1	950	3
<b>Total</b>	<b>1480</b>	<b>100</b>	<b>639</b>	<b>100</b>	<b>820</b>	<b>100</b>	<b>334</b>	<b>100</b>	<b>6838</b>	<b>100</b>	<b>20143</b>	<b>100</b>	<b>2309</b>	<b>100</b>	<b>32563</b>	<b>100</b>

\*Percentages may not equal 100 due to rounding.

**Table 3: North Manchester General Hospital ED: Total injury attendances by ethnicity and month, July 2010 to June 2011<sup>4</sup>**

Ethnicity	Jul	Aug	Sep	Oct	Nov	Dec	Jan	Feb	Mar	Apr	May	Jun	Total	%
White	2312	2195	2161	2080	1822	1904	1871	1859	2322	2260	2323	2155	25264	78
Black	187	143	166	158	146	174	158	134	186	181	183	183	1999	6
Mixed	165	142	143	161	128	174	151	125	157	142	141	151	1780	5
Other	117	102	107	127	102	133	115	115	116	139	138	108	1419	4
Pakistani	110	105	90	85	96	95	102	95	126	119	108	94	1225	4
Chinese	46	44	39	43	40	45	33	31	40	41	60	37	499	2
Indian	13	21	16	18	20	14	10	15	27	23	17	24	218	1
Bangladeshi	12	12	7	7	8	13	8	11	8	8	12	5	111	0
Not stated	***	***	***	***	***	***	***	***	***	***	***	***	32	0
Not known	***	***	***	***	***	***	***	***	***	***	***	***	16	0
<b>Total</b>	<b>2968</b>	<b>2769</b>	<b>2730</b>	<b>2682</b>	<b>2364</b>	<b>2554</b>	<b>2452</b>	<b>2387</b>	<b>2984</b>	<b>2920</b>	<b>2991</b>	<b>2762</b>	<b>32563</b>	<b>100</b>

<sup>3</sup> Please note that all numbers less than five have been suppressed in line with patient confidentiality and if there is only one number <5 in a category then two numbers will be suppressed at the next level.

<sup>4</sup> White = Irish, British, other white background; Mixed = white and black, white and Asian, mixed any other; Other = any other ethnic group, any other Asian background; Black = African, Caribbean, other black.

**Table 4: North Manchester General Hospital ED: Total injury attendances by method of disposal and month, July 2010 to June 2011<sup>5</sup>**

Disposal	Jul	Aug	Sep	Oct	Nov	Dec	Jan	Feb	Mar	Apr	May	Jun	Total	%
Discharged	1766	1492	1614	1595	1330	1416	1450	1367	1798	1682	1726	1674	18910	58
Referred/follow-up	901	911	802	750	756	803	696	721	865	877	931	770	9783	30
Admitted	248	302	261	279	230	265	250	254	271	271	277	271	3179	10
Other	53	64	53	58	48	70	56	45	50	90	57	47	691	2
<b>Total</b>	<b>2968</b>	<b>2769</b>	<b>2730</b>	<b>2682</b>	<b>2364</b>	<b>2554</b>	<b>2452</b>	<b>2387</b>	<b>2984</b>	<b>2920</b>	<b>2991</b>	<b>2762</b>	<b>32563</b>	<b>100</b>

**Table 5: North Manchester General Hospital ED: Total injury attendances by method of disposal and injury group, July 2010 to June 2011\***

Disposal	Assault		Bites & stings		Burns & scalds		DSH		Fall		Other injury		RTC		Total	
	n	%	n	%	n	%	n	%	n	%	n	%	n	%	n	%
Discharged	748	51	403	63	315	38	140	42	3470	51	12163	60	1671	72	18910	58
Referred/follow-up	302	20	213	33	398	49	40	12	1679	25	6695	33	456	20	9783	30
Admitted	238	16	***	***	77	9	***	***	1464	21	1199	6	97	4	3179	10
Other	192	13	***	***	30	4	***	***	225	3	86	0	85	4	691	2
<b>Total</b>	<b>1480</b>	<b>100</b>	<b>639</b>	<b>100</b>	<b>820</b>	<b>100</b>	<b>334</b>	<b>100</b>	<b>6838</b>	<b>100</b>	<b>20143</b>	<b>100</b>	<b>2309</b>	<b>100</b>	<b>32563</b>	<b>100</b>

\*Percentages may not equal 100 due to rounding.

**Table 6: North Manchester General Hospital ED: Total injury attendances by mode of arrival and month, July 2010 to June 2011\***

Arrival mode	Jul	Aug	Sep	Oct	Nov	Dec	Jan	Feb	Mar	Apr	May	Jun	Total	%
Private transport	2120	1931	1969	1830	1676	1715	1715	1636	2145	2084	2150	1917	22888	70
Ambulance	521	512	450	514	430	509	472	421	507	559	519	468	5882	18
Other	106	96	64	96	66	100	78	110	148	66	86	105	1121	3
Taxi	57	58	53	80	50	74	51	70	52	59	72	74	750	2
Not recorded	44	45	54	45	47	46	34	48	43	60	73	82	621	2
Foot	62	63	71	42	35	42	36	42	34	51	30	43	551	2
Public transport	37	33	58	52	37	39	36	40	41	29	35	45	482	1
Police	14	16	5	11	14	15	11	10	7	10	15	16	144	0
Unknown	***	***	***	***	***	***	***	***	***	***	***	***	90	0
Work transport	***	***	***	***	***	***	***	***	***	***	***	***	34	0
<b>Total</b>	<b>2968</b>	<b>2769</b>	<b>2730</b>	<b>2682</b>	<b>2364</b>	<b>2554</b>	<b>2452</b>	<b>2387</b>	<b>2984</b>	<b>2920</b>	<b>2991</b>	<b>2762</b>	<b>32563</b>	<b>100</b>

\*Percentages may not equal 100 due to rounding.

<sup>5</sup> Admitted=admitted to hospital/became a lodged patient of the same health care provider; Discharged=discharged - did not require any follow up treatment; Referral/follow-up =discharged - follow up treatment to be provided by GP, referred to ED clinic, referred to fracture clinic, referred to other out-patient clinic, referred to other health care professional; Other=died in department, left department before being treated, left department having refused treatment, other.

**Table 7: North Manchester General Hospital ED: Assault attendances by gender, incident location, age group and day/time of attendance, July 2010 to June 2011\*\***

	Assaults (n=1,480)	All injuries (n=32,563)
Sex	%	%
Female	27	45
Male	73	55
<b>Location</b>		
Public place	43	16
Home	26	52
Other	23	21
Work	3	4
Educational establishment	2	5
Not recorded	3	3
<b>Age group</b>		
0 - 4	0	13
5 - 19	22	26
20 - 34	45	23
35 - 49	24	16
50 - 64	7	10
65 plus	2	12
<b>Day &amp; time</b>		
Weekend nights*	21	7
Weekend days	23	21
Weekdays	56	72

\*8pm to 4am, Friday night/Saturday morning; Saturday night/Sunday morning; Sunday night/Monday morning

\*\*Percentages may not equal 100 due to rounding

Author: Ian Warren, Published: September 2011

For further information please contact: Centre for Public Health, Research Directorate, Liverpool John Moores University, 2<sup>nd</sup> Floor, Henry Cotton Building, 15-21 Webster Street, Liverpool, L3 2ET, Tel: 0151 231 4513 or Email: [i.j.warren@ljmu.ac.uk](mailto:i.j.warren@ljmu.ac.uk)

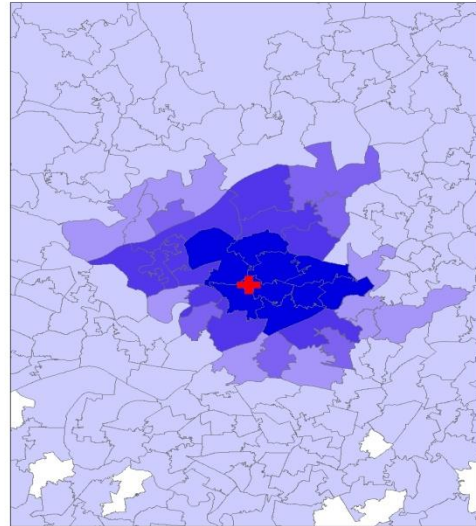
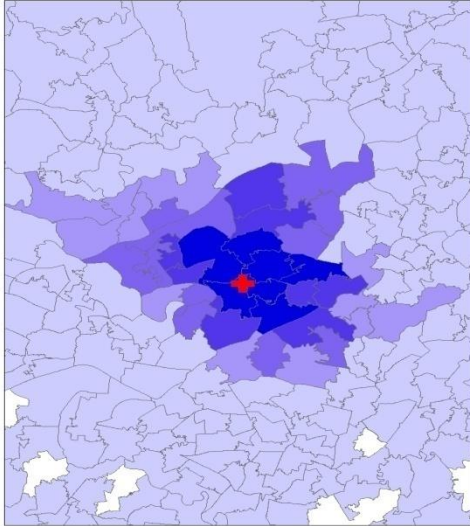
Website: [www.tiig.info](http://www.tiig.info) (data requests should be made through the website)

**Figure 4a,b,c,d: Middle Super Output Area of residence for injury attendances to North Manchester General Hospital ED. Quintiles of crude rates per 1,000 population, July 2010 to June 2011**

a) All injury attendances: quintiles of crude rates per 1,000 population    b) Fall: quintiles of crude rates per 1,000 population

**+** North Manchester General Hospital ED

**+** North Manchester General Hospital ED



1 (0.00 – 10.38)	MSOA E02001046 (196.46)
2 (10.39 – 38.80)	MSOA E02001050 (186.46)
3 (38.81 – 94.06)	MSOA E02001052 (185.24)
4 (94.07 – 148.47)	MSOA E02001045 (183.84)
5 (148.48 – 196.46)	

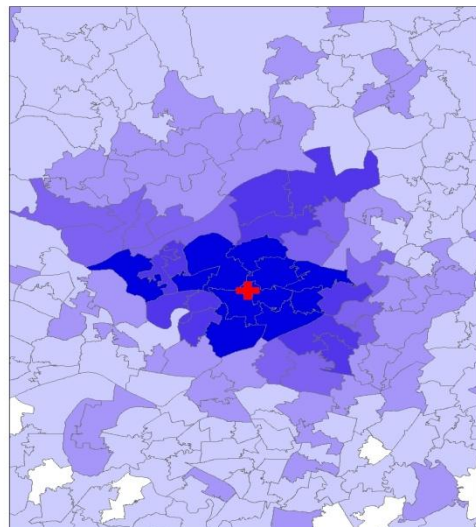
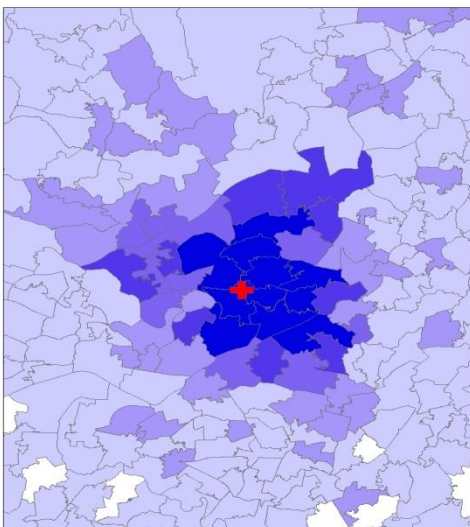
1 (0.00 – 2.55)	MSOA E02001050 (39.36)
2 (2.56 – 8.94)	MSOA E02001045 (39.14)
3 (8.95 – 17.16)	MSOA E02001046 (37.48)
4 (17.17 – 30.19)	MSOA E02001049 (36.97)
5 (30.20 – 39.36)	

c) Assault: quintiles of crude rates per 1,000 population

d) RTC: quintiles of crude rates per 1,000 population

**+** North Manchester General Hospital ED

**+** North Manchester General Hospital ED



1 (0.00 – 0.22)	MSOA E02001053 (10.77)
2 (0.23 – 0.93)	MSOA E02001050 (10.62)
3 (0.94 – 2.59)	MSOA E02001046 (7.98)
4 (2.60 – 4.98)	MSOA E02001051 (7.72)
5 (4.99 – 10.77)	

1 (0.00 – 0.27)	MSOA E02001052 (18.83)
2 (0.28 – 1.21)	MSOA E02001046 (12.67)
3 (1.22 – 3.83)	MSOA E02001048 (12.31)
4 (3.84 – 7.84)	MSOA E02001054 (12.18)
5 (7.85 – 18.83)	