

Injury attendances to North Manchester General Hospital Emergency Department

July 2011 to June 2012

This report summarises recorded injury attendances to North Manchester General Hospital Emergency Department (ED) between July 2011 and June 2012.

Between July 2011 and June 2012 there were 33,075 injury attendances to North Manchester General Hospital ED. Males accounted for over half (54%) of all attendances. The month with the highest attendances was March (n=3,316) with December (n=2,362) having the lowest attendances (**Figure 1**). The majority (61%) of attendances were recorded as other injury. Of the specified injury groups falls (21%) accounted for the highest proportion followed by road traffic collision (RTC) (7%) (**Table 1**).

For all injuries the highest proportion of attendances were for persons aged 5 to 19 (25%) and 20 to 34 years (23%) (**Figure 2**). Over a third (36%) of fall attendees were aged 65 or over. Two-fifths (40%) of deliberate self-harm (DSH) attendees were aged 20 to 34 years (**Figure 3**).

Table 2 shows the location of the incident of injury attendances. Over a half (53%) of injuries occurred in the home. Almost one in seven (14%) injuries occurred in a public place with a smaller proportion occurring at an educational establishment (5%) or at work (4%). Six in ten (60%) falls occurred in the home.

Table 3 shows the ethnicity of attendees to North Manchester General Hospital ED. Over three-quarters (77%) were white, 6% were Pakistani and 4% were black.

The disposal of a patient can give an indication of the severity of the injuries sustained. Over six in ten (62%) attendees were discharged, almost three in ten (27%) were referred and 10% were admitted (**Table 4**). Almost eight in ten (77%) RTC attendees were discharged (**Table 5**).

Table 6 shows the arrival method of attendances at North Manchester General Hospital ED. Seven in ten (70%) arrived by private transport while nearly a fifth (18%) arrived by ambulance.

Table 7 presents data for assault attendances to North Manchester ED. Over seven in ten (72%) of assault attendees were male and nearly a half (46%) were aged 20 to 34 years. Over two-fifths (43%) of assaults occurred in a public place.

Figure 1: North Manchester General Hospital ED: Total injury attendances by gender and month, July 2011 to June 2012

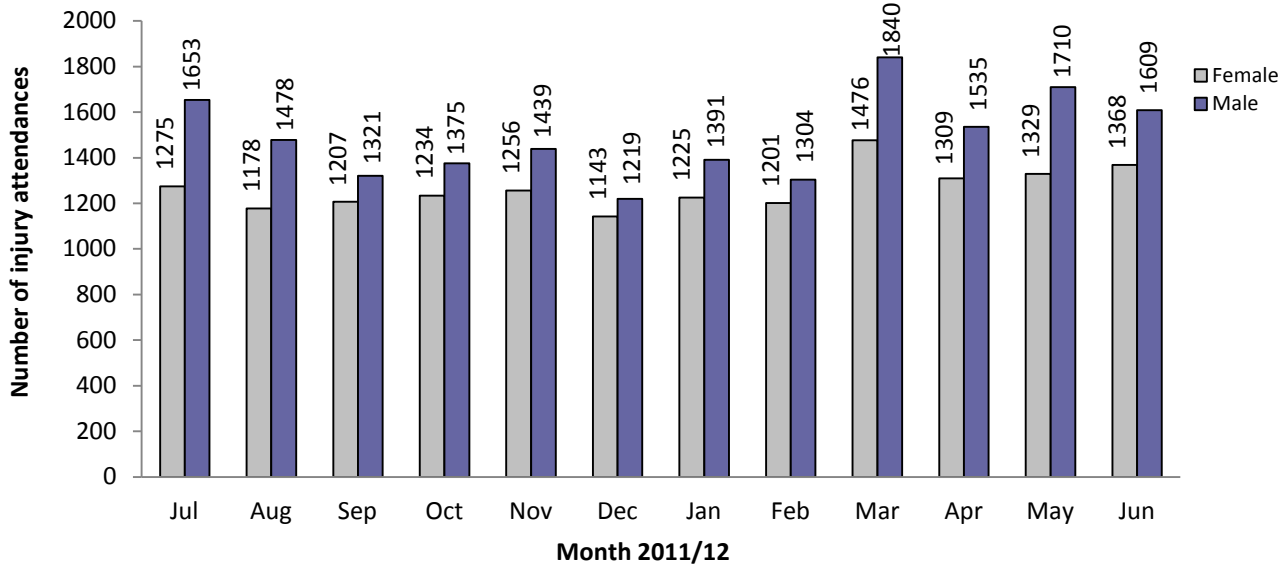
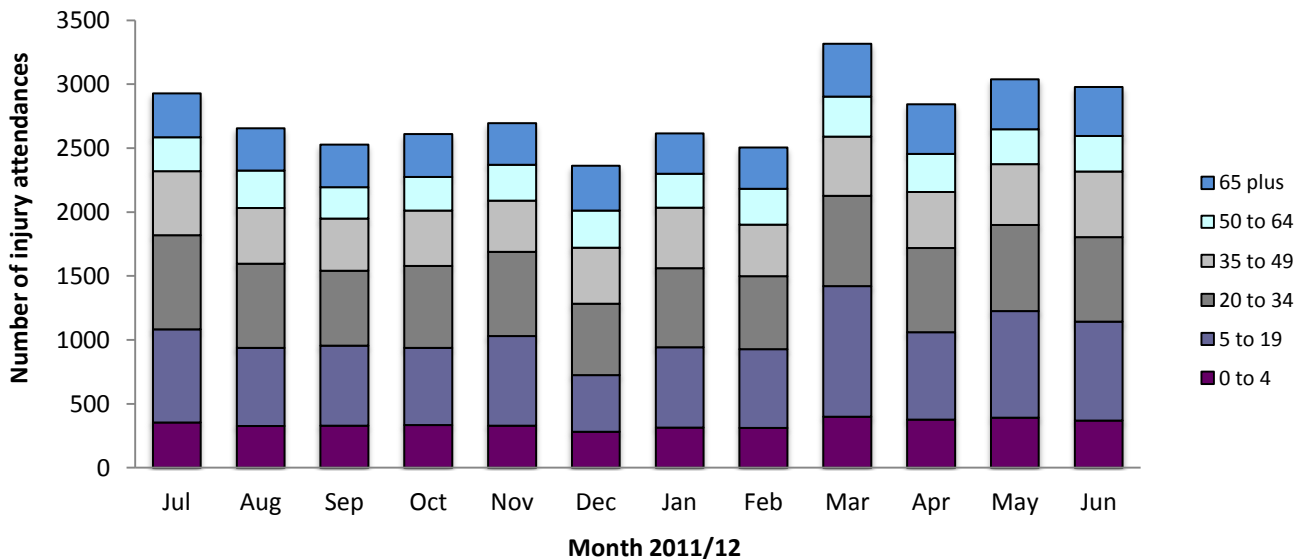


Table 1: North Manchester General Hospital ED: Total injury attendances by injury group and month, July 2011 to June 2012^{1*}

Injury group	Jul	Aug	Sep	Oct	Nov	Dec	Jan	Feb	Mar	Apr	May	Jun	Total	%
Other injury	1755	1624	1542	1532	1647	1301	1630	1493	2221	1823	1782	1833	20183	61
Fall	622	531	538	589	564	603	506	595	624	598	676	621	7067	21
RTC	229	221	192	204	191	205	208	177	181	169	216	221	2414	7
Assault	129	91	117	131	165	125	151	128	155	141	171	143	1647	5
Burns and scalds	70	65	53	66	56	68	59	56	44	64	98	64	763	2
Bites and stings	97	89	63	65	49	34	39	36	60	38	71	74	715	2
DSH	26	35	23	22	23	26	23	20	31	11	25	21	286	1
Total	2928	2656	2528	2609	2695	2362	2616	2505	3316	2844	3039	2977	33075	100

*Percentages may not equal 100 due to rounding.

Figure 2: North Manchester General Hospital ED: Total injury attendances by age group and month, July 2011 to June 2012



¹ Due to low numbers firework injury (n=5), sports injury (n<5) and electrical accident (n=31) have been included in other injury.

Figure 3: North Manchester General Hospital ED: Total injury attendances by age group and injury group (excluding other injury), July 2011 to June 2012

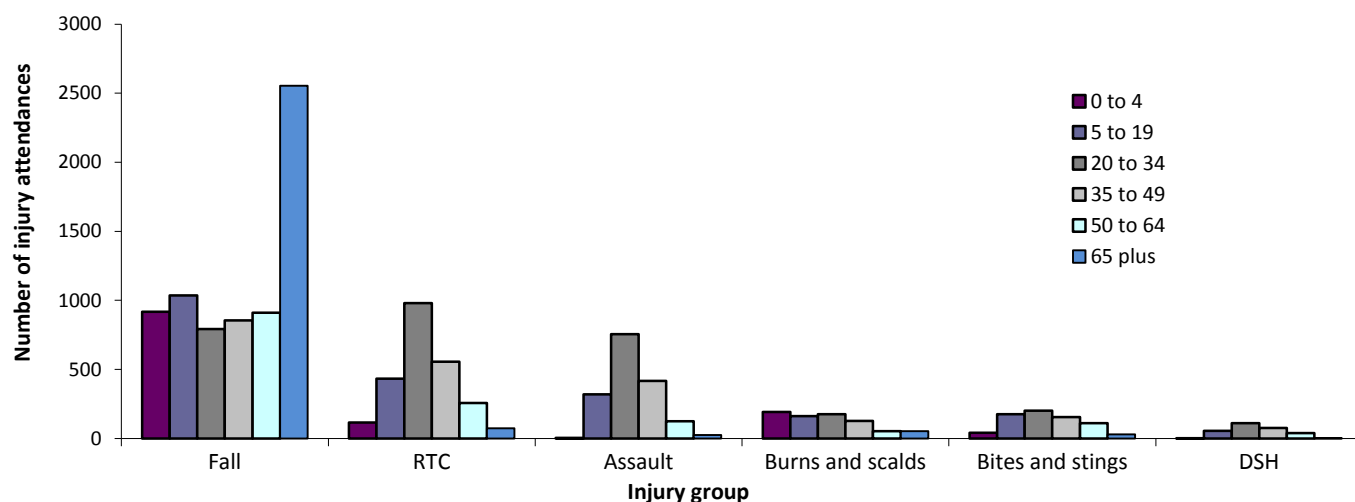


Table 2: North Manchester General Hospital ED: Total injury attendances by location of incident and injury group, July 2011 to June 2012^{2*}

Location	Assault		Bites and stings		Burns and scalds		DSH		Fall		Other injury		RTC		Total	
	n	%	n	%	n	%	n	%	n	%	n	%	n	%	n	%
Home	408	25	336	47	447	59	200	70	4253	60	11513	57	262	11	17419	53
Other	397	24	126	18	61	8	48	17	682	10	3371	17	1957	81	6642	20
Public place	713	43	162	23	32	4	23	8	1327	19	2271	11	128	5	4656	14
Educational establishment	29	2	7	1	5	1	***	1	264	4	1299	6	***	0	1608	5
Not recorded	42	3	57	8	162	21	12	4	398	6	857	4	61	3	1589	5
Work	58	4	27	4	56	7	***	0	143	2	872	4	***	0	1161	4
Total	1647	100	715	100	763	100	286	100	7067	100	20183	100	2414	100	33075	100

*Percentages may not equal 100 due to rounding.

Table 3: North Manchester General Hospital ED: Total injury attendances by ethnicity and month, July 2011 to June 2012³

Ethnicity	Jul	Aug	Sep	Oct	Nov	Dec	Jan	Feb	Mar	Apr	May	Jun	Total	%
White	2236	2103	1950	2026	2124	1822	2040	1915	2579	2178	2299	2293	25565	77
Pakistani	217	175	185	161	157	150	157	124	191	201	200	209	2127	6
Not stated	117	95	100	110	97	107	113	120	146	111	146	133	1395	4
Black	109	98	90	96	118	96	103	125	132	119	140	116	1342	4
Any other ethnic group	114	75	89	95	94	96	103	117	136	112	119	108	1258	4
Mixed	49	42	47	55	35	38	37	46	63	54	59	40	565	2
Any other Asian background	39	28	28	38	35	25	30	20	40	37	48	36	404	1
Indian	22	15	19	12	21	15	23	16	16	19	11	26	215	1
Chinese	14	13	14	7	8	10	7	14	6	9	12	6	120	0
Not recorded	6	***	***	***	***	***	***	***	***	***	***	5	44	0
Bangladeshi	5	***	***	***	***	***	***	***	***	***	***	5	40	0
Total	2928	2656	2528	2609	2695	2362	2616	2505	3316	2844	3039	2977	33075	100

*Percentages may not equal 100 due to rounding.

Table 4: North Manchester General Hospital ED: Total injury attendances by method of disposal and month, July 2011 to June 2012^{4*}

Disposal	Jul	Aug	Sep	Oct	Nov	Dec	Jan	Feb	Mar	Apr	May	Jun	Total	%
Discharged	1741	1662	1626	1669	1687	1528	1581	1503	1943	1625	1957	1838	20360	62
Referral/follow-up	820	695	619	647	753	561	750	720	1037	885	718	796	9001	27
Admitted	306	256	230	249	228	233	247	240	287	302	294	300	3172	10
Other	61	43	53	44	27	40	38	42	49	32	70	43	542	2
Total	2928	2656	2528	2609	2695	2362	2616	2505	3316	2844	3039	2977	33075	100

*Percentages may not equal 100 due to rounding.

² Please note that all numbers less than five have been suppressed in line with patient confidentiality and if there is only one number <5 in a category then two numbers will be suppressed at the next level.

³ White = Irish, British, other white background; Mixed = white and black, white and Asian, mixed any other; Black = African, Caribbean, other black.

⁴ Admitted=admitted to hospital/became a lodged patient of the same health care provider; Discharged=discharged - did not require any follow-up treatment; Referral/follow-up =discharged - follow-up treatment to be provided by GP, referred to ED clinic, referred to fracture clinic, referred to other out-patient clinic, referred to other health care professional; Other=died in department, left department before being treated, left department having refused treatment, other.

Table 5: North Manchester General Hospital ED: Total injury attendances by method of disposal and injury group, July 2011 to June 2012*

Disposal	Assault		Bites and stings		Burns and scalds		DSH		Fall		Other injury		RTC		Total	
	n	%	n	%	n	%	n	%	n	%	n	%	n	%	n	%
Discharged	901	55	472	66	315	41	127	44	3749	53	12931	64	1865	77	20360	62
Referral/follow-up	320	19	215	30	365	48	36	13	1623	23	6048	30	394	16	9001	27
Admitted	262	16	23	3	62	8	74	26	1511	21	1121	6	119	5	3172	10
Other	164	10	5	1	21	3	49	17	184	3	83	0	36	1	542	2
Total	1647	100	715	100	763	100	286	100	7067	100	20183	100	2414	100	33075	100

*Percentages may not equal 100 due to rounding.

Table 6: North Manchester General Hospital ED: Total injury attendances by mode of arrival and month, July 2011 to June 2012

Arrival mode	Jul	Aug	Sep	Oct	Nov	Dec	Jan	Feb	Mar	Apr	May	Jun	Total	%
Private transport	2051	1889	1780	1774	1919	1561	1837	1793	2328	1883	2154	2071	23040	70
Ambulance	547	438	466	511	458	519	466	477	538	553	559	576	6108	18
Other	84	105	82	84	71	83	72	74	126	100	98	74	1053	3
Not recorded	75	80	68	83	82	70	95	76	63	65	80	62	899	3
Taxi	76	52	52	68	79	57	79	28	63	61	55	82	752	2
Foot	48	44	29	36	35	24	29	23	127	120	46	64	625	2
Public transport	30	32	42	35	37	27	20	19	41	44	20	29	376	1
Police	***	***	***	***	***	***	***	***	***	***	***	***	195	1
Work transport	***	***	***	***	***	***	***	***	***	***	***	***	27	0
Total	2928	2656	2528	2609	2695	2362	2616	2505	3316	2844	3039	2977	33075	100

Table 7: North Manchester General Hospital ED: Total injury attendances and assault attendances by gender, incident location, and age group, July 2011 to June 2012*

	Assaults (n=1,647)	All injuries (n=33,075)
Gender	%	%
Female	28	46
Male	72	54
Location		
Public place	43	14
Home	25	53
Other	24	20
Work	4	4
Educational establishment	2	5
Not recorded	1	5
Age group		
0 - 4	0	12
5 - 19	19	25
20 - 34	46	23
35 - 49	25	16
50 - 64	8	10
65 plus	2	13

*Percentages may not equal 100 due to rounding

Author: Ian Warren, Published: August 2012

For further information please contact: Val Upton, Centre for Public Health, Research Directorate, Liverpool John Moores University, 2nd Floor, Henry Cotton Building, 15-21 Webster Street, Liverpool, L3 2ET, Tel: 0151 231 4513 or Email: ij.warren@ljmu.ac.uk
 Website: www.tiig.info (data requests should be made through the website)