



TIIG

INJURY SURVEILLANCE IN THE NORTH WEST OF ENGLAND

Injury attendances to North Manchester General Hospital Emergency Department

October 2012 to September 2013

This report summarises recorded injury attendances to North Manchester General Hospital Emergency Department (ED) between October 2012 and September 2013.

Between October 2012 and September 2013 there were 33,301 injury attendances to North Manchester General Hospital ED. Males accounted for over half (54%) of all attendances (**Figure 1**). The month with the highest attendances was July (n=3,312) with February (n=2,493) having the lowest attendances. The majority (61%) of attendances were recorded as other injury. Of the specified injury groups, falls (23%) accounted for the highest proportion followed by road traffic collision (RTC) (7%) and assaults (5%) (**Table 1**).

For all injuries the highest proportion of attendances were for persons aged 5 to 19 (25%) and 20 to 34 years (23%) (**Figure 2**). Over a third (35%) of fall attendees were aged 65 or over. Close to four in ten (39%) of deliberate self-harm (DSH) attendees were aged 20 to 34 years (**Figure 3**).

Table 2 shows the location of the incident of injury attendances. Close to six in ten (57%) of injuries occurred in the home. Almost one in seven (14%) injuries occurred in a public place with a smaller proportion occurring at an educational establishment (5%) or at work (4%). Almost three quarters (74%) of

DSH occurred in the home and over six in ten (61%) falls occurred in the home.

Table 3 shows the ethnicity of attendees to North Manchester General Hospital ED. Over three-quarters (77%) were white, 6% were Pakistani and 4% were black.

The disposal of a patient can give an indication of the severity of the injuries sustained. Over six in ten (61%) attendees were discharged, almost three in ten (28%) were referred and 9% were admitted (**Table 4**). Over three quarters (76%) of RTC attendees were discharged (**Table 5**).

Table 6 shows the arrival method of attendances at North Manchester General Hospital ED. Over seven in ten (72%) arrived by private transport while nearly a fifth (18%) arrived by ambulance.

Table 7 presents data for assault attendances to North Manchester ED. Nearly a quarter (23%) of assault attendees were male and nearly a half (47%) were aged 20 to 34 years. Over two fifths (42%) of assaults occurred in a public place.

Figure 1: North Manchester General Hospital ED: Total injury attendances by gender and month, October 2012 to September 2013

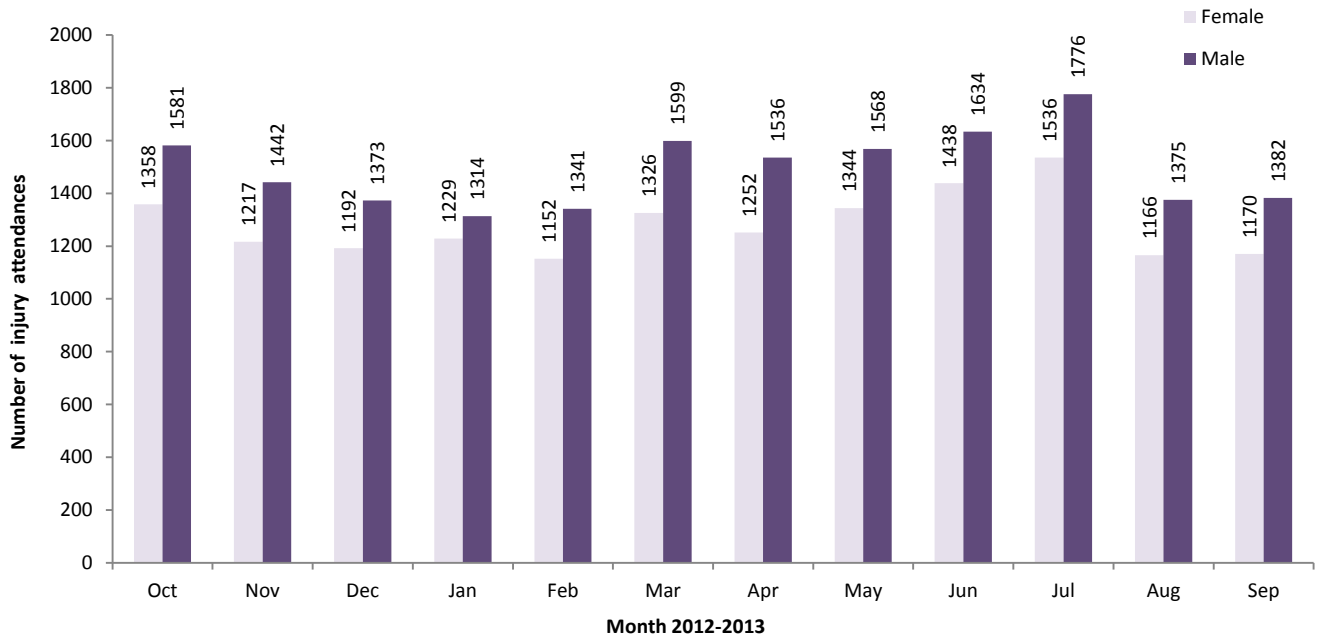


Table 1: North Manchester General Hospital ED: Total injury attendances by injury group and month, October 2012 to September 2013

Injury group	Oct	Nov	Dec	Jan	Feb	Mar	Apr	May	Jun	Jul	Aug	Sep	Total	%
Other injury	1781	1611	1527	1489	1530	1819	1770	1825	1936	2016	1422	1426	20152	61
Fall	637	614	580	635	513	665	603	662	642	704	667	620	7542	23
RTC	235	208	191	180	182	212	161	145	193	177	118	203	2205	7
Assault	157	113	156	110	145	130	138	116	139	150	125	128	1607	5
Burns and scalds	56	51	50	72	63	49	56	71	64	107	83	70	792	2
Bites and stings	52	39	37	40	33	28	47	68	69	137	110	74	734	2
DSH	21	23	24	17	27	22	13	25	29	21	16	31	269	1
Total	2939	2659	2565	2543	2493	2925	2788	2912	3072	3312	2541	2552	33301	100

Figure 2: North Manchester General Hospital ED: Total injury attendances by age group and month, October 2012 to September 2013

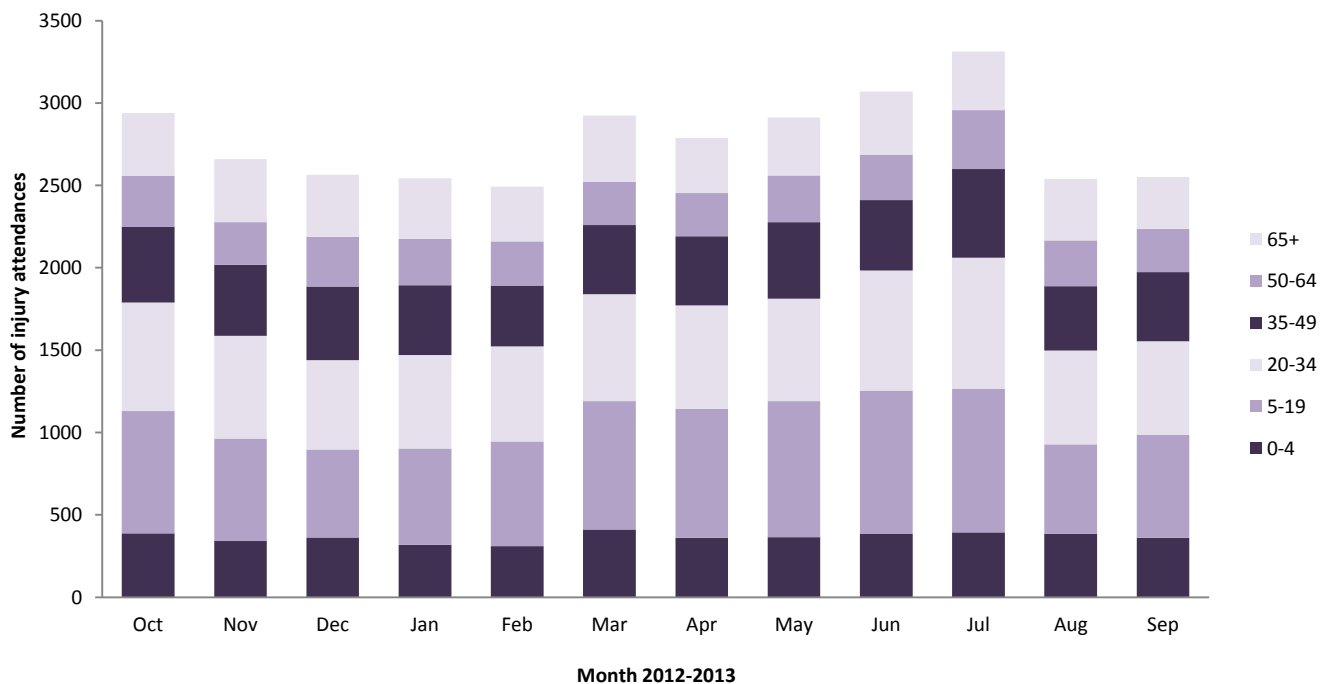


Figure 3: North Manchester General Hospital ED: Total injury attendances by age group and injury group (excluding other injury), October 2012 to September 2013

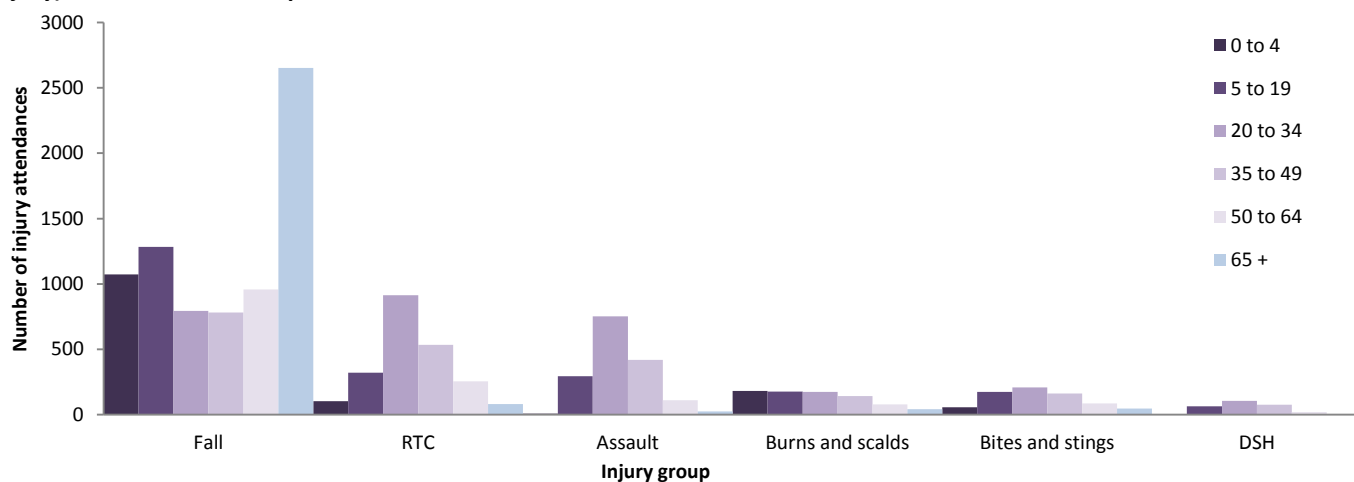


Table 2: North Manchester General Hospital ED: Total injury attendances by location of incident and injury group, October 2012 to September 2013¹

Incident location	Assault		Bites and stings		Burns and scalds		DSH		Fall		RTC		Other		Total	
	n	%	n	%	n	%	n	%	n	%	n	%	n	%	n	%
Home	435	27	400	54	509	64	199	74	4582	61	249	11	12604	63	18978	57
Other	367	23	86	12	53	7	44	16	705	9	1848	84	2798	14	5901	18
Public place	671	42	176	24	28	4	15	6	1509	20	78	4	2288	11	4765	14
Not recorded	14	1	<45	6	139	18	***	1	248	3	21	1	407	2	875	3
Work	88	5	26	4	52	7	***	0	149	2	<10	0	882	4	1206	4
Educational establishment	32	2	***	0	11	1	7	3	349	5	***	0	1173	6	1576	5
Total	1607	100	734	100	792	100	269	100	7542	100	2205	100	20152	100	33301	100

Table 3: North Manchester General Hospital ED: Total injury attendances by ethnicity and month, October 2012 to September 2013^{1,2}

Ethnicity	Oct	Nov	Dec	Jan	Feb	Mar	Apr	May	Jun	Jul	Aug	Sep	Total	%
White	2297	2063	1928	2004	1902	2242	2144	2245	2334	2524	1954	1900	25537	77
Pakistani	166	151	183	140	151	210	167	193	208	184	171	193	2117	6
Black	126	117	124	110	119	119	138	109	135	146	120	101	1464	4
Any other ethnic group	121	104	107	82	108	108	105	106	134	157	92	129	1353	4
Not stated	105	115	91	92	89	126	101	113	124	122	96	87	1261	4
Mixed	59	47	60	45	49	54	62	50	67	72	51	55	671	2
Any other Asian background	33	27	39	35	46	37	41	46	34	54	29	38	459	1
Indian	18	16	12	17	13	14	19	29	19	28	20	27	232	1
Chinese	9	13	14	15	<15	11	7	15	13	17	<10	15	150	0
Not recorded	***	***	<10	***	0	***	***	***	***	***	***	***	35	0
Bangladeshi	***	***	***	0	***	***	***	***	***	***	0	***	22	0
Total	2939	2659	2565	2543	2493	2925	2788	2912	3072	3312	2541	2552	33301	100

Table 4: North Manchester General Hospital ED: Total injury attendances by method of disposal and month, October 2012 to September 2013³

Disposal	Oct	Nov	Dec	Jan	Feb	Mar	Apr	May	Jun	Jul	Aug	Sep	Total	%
Discharged	1780	1666	1490	1540	1527	1793	1718	1775	1830	2065	1587	1682	20453	61
Referral/follow-up	853	696	758	706	713	803	811	828	939	912	622	605	9246	28
Admitted	273	237	274	255	213	291	230	276	253	289	280	210	3081	9
Other	33	60	43	42	40	38	29	33	50	46	52	55	521	2
Total	2939	2659	2565	2543	2493	2925	2788	2912	3072	3312	2541	2552	33301	100

¹ Please note that all numbers less than five have been suppressed in line with patient confidentiality and if there is only one number <5 in a category then two numbers will be suppressed at the next level.

² White = Irish, British, other white background; Mixed = white and black, white and Asian, mixed any other; Black = African, Caribbean, other black.

³ Admitted=admitted to hospital/became a lodged patient of the same health care provider; Discharged=discharged - did not require any follow-up treatment; Referral/follow-up =discharged - follow-up treatment to be provided by GP, referred to ED clinic, referred to fracture clinic, referred to other out-patient clinic, referred to other health care professional; Other=died in department, left department before being treated, left department having refused treatment, other.

Table 5: North Manchester General Hospital ED: Total injury attendances by method of disposal and injury group, October 2012 to September 2013⁴

Disposal	Assault		Bites and stings		Burns and scalds		DSH		Fall		Other injury		RTC		Total	
	n	%	n	%	n	%	n	%	n	%	n	%	n	%	n	%
Discharged	907	56	523	71	368	46	139	52	4065	54	12767	63	1684	76	20453	61
Referral/follow-up	315	20	186	25	325	41	42	16	1752	23	6222	31	404	18	9246	28
Admitted	230	14	<25	3	<70	9	59	22	1535	20	1088	5	80	4	3081	9
Other	155	10	***	1	<35	4	29	11	190	3	75	0	37	2	521	2
Total	1607	100	734	100	792	100	269	100	7542	100	20152	100	2205	100	33301	100

Table 6: North Manchester General Hospital ED: Total injury attendances by mode of arrival and month, October 2012 to September 2013⁴

Arrival mode	Oct	Nov	Dec	Jan	Feb	Mar	Apr	May	Jun	Jul	Aug	Sep	Total	%
Private transport	2121	1897	1700	1840	1761	2119	2038	2121	2244	2459	1769	1836	23905	72
Ambulance	543	510	588	460	461	537	471	515	557	520	488	460	6110	18
Other	54	71	92	78	89	72	95	78	76	123	94	58	980	3
Not recorded	68	43	48	43	56	52	61	62	65	80	59	59	696	2
Taxi	55	49	59	41	35	51	38	33	54	38	61	68	582	2
Public transport	43	43	37	31	34	38	34	36	28	30	27	23	404	1
Foot	31	23	22	30	29	33	27	38	32	42	27	31	365	1
Police	24	<25	<20	<20	<30	<25	17	<30	<15	<20	16	<15	230	1
Work transport	0	***	***	***	***	***	7	***	***	***	0	***	29	0
Total	2939	2659	2565	2543	2493	2925	2788	2912	3072	3312	2541	2552	33301	100

Table 7: North Manchester General Hospital ED: Total injury attendances and assault attendances by gender, incident location, and age group, October 2012 to September 2013

	Assaults (n=1,607)	All injuries (n=33,301)
Gender	%	%
Female	27	46
Male	73	54
Location		
Public place	42	14
Home	27	57
Other	23	18
Work	5	4
Educational establishment	2	5
Not recorded	1	3
Age group		
0 - 4	0	13
5 - 19	18	25
20 - 34	47	23
35 - 49	26	16
50 - 64	7	10
65 plus	1	13

Published November 2013
 Jennifer Brizell (TIIG researcher)
 Centre for Public Health, Faculty of Education, Health and Community, Liverpool John Moores University
 2nd Floor, Henry Cotton Campus, 15-21 Webster Street, Liverpool, L3 2ET
 Tel: 0151 231 4500 Email: j.s.brizell@ljmu.ac.uk
 Website: www.tiig.info (please note all data requests should be made through the TIIG website)
 Twitter: @TIIG_CPH

⁴ Please note that all numbers less than five have been suppressed in line with patient confidentiality and if there is only one number <5 in a category then two numbers will be suppressed at the next level.