

## Injury attendances to Rochdale Infirmary Emergency Department

### April 2010 to March 2011

This report summarises recorded injury attendances to Rochdale Infirmary Emergency Department (ED) between April 2010 and March 2011.

Between April 2010 and March 2011, there were 27,585 injury attendances to Rochdale Infirmary ED. Males accounted for over half (55%) of all attendances. The month with the highest attendances was May (n=2,738) with February (n=1,980) having the lowest attendances ([Figure 1](#)). The majority (62%) of attendances were recorded as other injury; of the specified injury groups falls accounted for the highest proportion (21%) followed by road traffic collision (RTC) (7%) and assault (4%) ([Table 1](#)).

For all attendances the highest proportion were for persons aged 5 to 19 (27%) and 20 to 34 (23%) years ([Figure 2](#)). Over a third (34%) of fall attendees were aged 65 or over. Over two-fifths (42%) of RTC attendees were aged 20 to 34 ([Figure 3](#)).

[Table 2](#) shows the location where injuries occurred. Over two-fifths (41%) of injuries occurred in the home; 14% of injuries occurred in a public place. Over two-fifths (42%) of falls occurred in the home whilst nearly two-thirds (63%) of DSH injuries occurred in the home.

[Table 3](#) shows the ethnicity of attendees to Rochdale Infirmary ED. Three-quarters (75%) were white and 16% were Pakistani.

The disposal of a patient can give an indication of the severity of the injuries sustained. Nearly two-thirds (62%) of attendees were discharged, three in ten (30%) were referred and 7% were admitted ([Table 4](#)). Over three-quarters (76%) of RTC attendees were discharged ([Table 5](#)).

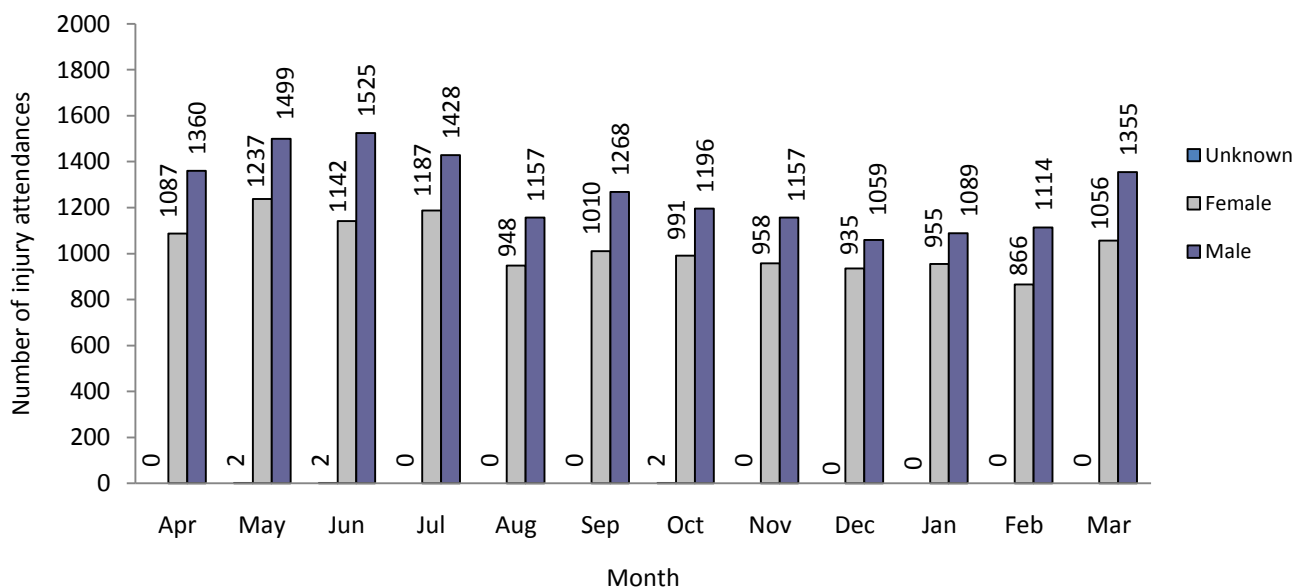
[Table 6](#) shows the arrival methods of attendances at Rochdale Infirmary ED. Nearly seven in ten (69%) arrived by private transport whilst 10% arrived by ambulance.

[Table 7](#) presents data on assault attendances at Rochdale Infirmary ED. Nearly three-quarters (73%) were male; nearly half (48%) occurred in a public place; nearly four in ten (39%) were aged 20-34; and a quarter (25%) occurred on weekend nights.

[Figure 4 \(a-d\)](#) shows crude rates of injury attendance at Rochdale Infirmary ED by area of residence, in this case Middle Super Output Area (MSOA). The MSOAs with the highest crude rates are indicated beneath each figure.<sup>1</sup>

<sup>1</sup> Population figures are drawn from mid-2008 population estimates from the Office for National Statistics.

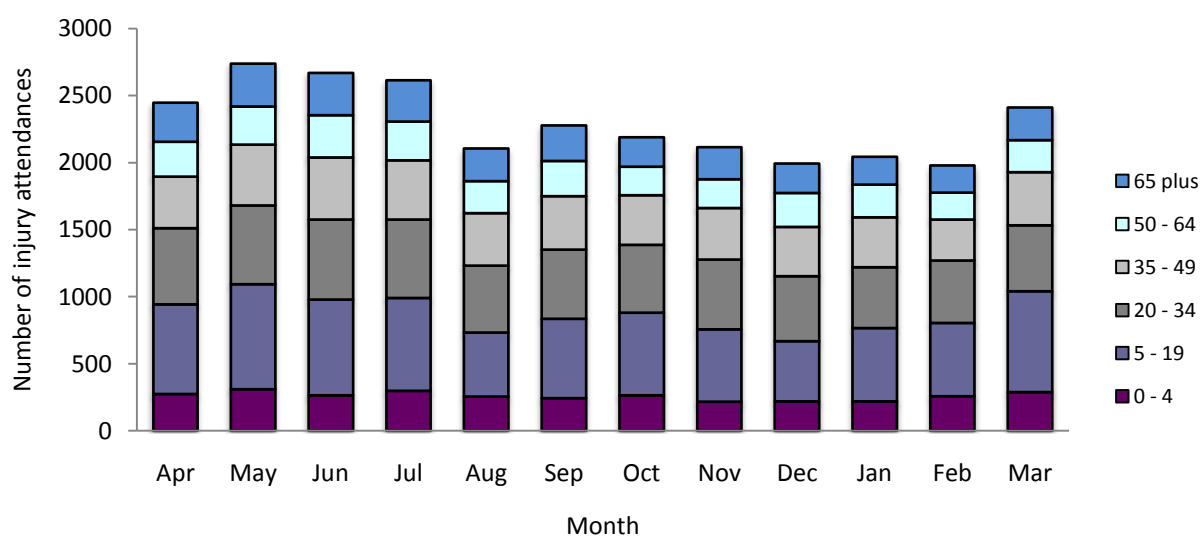
**Figure 1: Rochdale Infirmary ED: Total injury attendances by gender and month, April 2010 to March 2011**



**Table 1: Rochdale Infirmary ED: Total injury attendances by injury group and month, April 2010 to March 2011<sup>23</sup>**

Injury group	Apr	May	Jun	Jul	Aug	Sep	Oct	Nov	Dec	Jan	Feb	Mar	Total	%
<b>Other injury</b>	1608	1748	1647	1529	1384	1365	1338	1186	1125	1240	1269	1579	17018	62
<b>Fall</b>	419	549	492	579	385	502	456	481	557	475	397	507	5799	21
<b>RTC</b>	160	159	184	188	115	167	195	256	151	139	161	126	2001	7
<b>Assault</b>	103	121	138	93	59	79	81	84	60	98	60	85	1061	4
<b>Burns &amp; scalds</b>	55	77	76	85	54	74	50	70	72	63	53	55	784	3
<b>Bites &amp; stings</b>	65	56	112	119	103	79	56	***	***	24	31	47	751	3
<b>DSH</b>	37	28	20	22	5	12	13	***	***	5	9	12	171	1
<b>Total</b>	2447	2738	2669	2615	2105	2278	2189	2115	1994	2044	1980	2411	27585	100

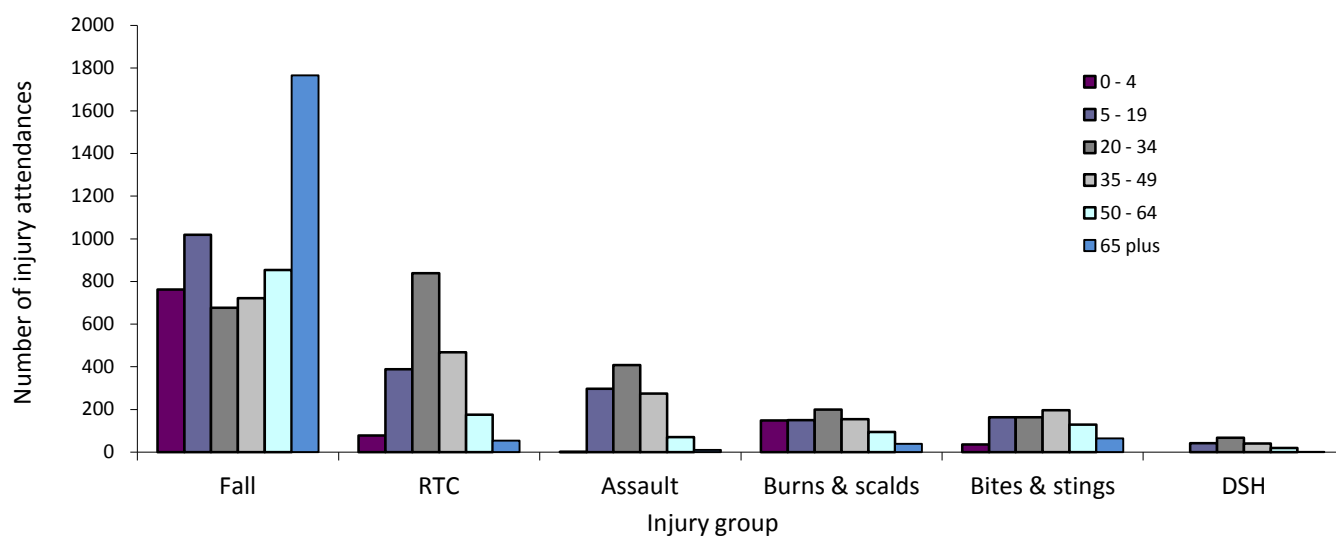
**Figure 2: Rochdale Infirmary ED: Total injury attendances by age group, April 2010 to March 2011**



<sup>2</sup> Due to low numbers sports injury (n=25), drown/immersion (n=1), electrical accident (n=28) and firework injury (n=2) were included in other injury.

<sup>3</sup> Please note that all numbers less than five have been suppressed in line with patient confidentiality and if there is only one number <5 in a category then two numbers will be suppressed at the next level.

**Figure 3: Rochdale Infirmary ED: Total injury attendances by age group and injury group (excluding other injury), April 2010 to March 2011**



**Table 2: Rochdale Infirmary ED: Total injury attendances by location of incident and injury group, April 2010 to March 2011**

Location	Assault		Bites & stings		Burns & scalds		DSH		Fall		Other injury		RTC		Total	
	n	%	n	%	n	%	n	%	n	%	n	%	n	%	n	%
Home	172	16	300	40	382	49	107	63	2414	42	7911	46	43	2	11329	41
Other	242	23	189	25	80	10	33	19	741	13	3750	22	1864	93	6899	25
Public place	510	48	154	21	32	4	14	8	1425	25	1799	11	45	2	3979	14
Unknown	54	5	64	9	207	26	15	9	694	12	1148	7	41	2	2223	8
Work	45	4	38	5	72	9	***	***	162	3	1287	8	***	***	1610	6
Educational establishment	38	4	6	1	11	1	***	***	363	6	1123	7	***	***	1545	6
<b>Total</b>	<b>1061</b>	<b>100</b>	<b>751</b>	<b>100</b>	<b>784</b>	<b>100</b>	<b>171</b>	<b>100</b>	<b>5799</b>	<b>100</b>	<b>17018</b>	<b>100</b>	<b>2001</b>	<b>100</b>	<b>27585</b>	<b>100</b>

**Table 3: Rochdale Infirmary ED: Total injury attendances by ethnicity and month, April 2010 to March 2011<sup>4</sup>**

Ethnicity	Apr	May	Jun	Jul	Aug	Sep	Oct	Nov	Dec	Jan	Feb	Mar	Total	%
White	1849	2016	1965	1936	1583	1770	1641	1614	1458	1512	1464	1835	20643	75
Pakistani	370	424	436	435	323	335	357	324	378	368	352	381	4483	16
Not stated	101	136	127	127	84	71	77	59	48	53	47	59	989	4
Bangladeshi	36	61	38	42	34	32	41	41	27	37	37	40	466	2
Black	26	30	30	23	25	17	31	17	20	20	29	23	291	1
Mixed	17	28	15	18	20	21	12	19	24	16	17	29	236	1
Any other ethnic group	24	21	20	11	16	7	14	19	17	18	16	27	210	1
Asian other	12	7	15	10	8	14	10	15	12	7	7	8	125	0
Indian	7	9	16	11	10	6	***	6	8	11	8	8	104	0
Not known	***	***	***	***	***	***	***	***	***	***	***	***	21	0
Chinese	***	***	***	***	***	***	***	***	***	***	***	***	17	0
<b>Total</b>	<b>2447</b>	<b>2738</b>	<b>2669</b>	<b>2615</b>	<b>2105</b>	<b>2278</b>	<b>2189</b>	<b>2115</b>	<b>1994</b>	<b>2044</b>	<b>1980</b>	<b>2411</b>	<b>27585</b>	<b>100</b>

<sup>4</sup> White = Irish, British, other white background; Mixed = white and black, white and Asian, mixed any other; Other = any other ethnic group, any other Asian background; Black = African, Caribbean, other black.

**Table 4: Rochdale Infirmary ED: Total injury attendances by method of disposal and month, April 2010 to March 2011<sup>5</sup>**

Disposal	Apr	May	Jun	Jul	Aug	Sep	Oct	Nov	Dec	Jan	Feb	Mar	Total	%
Admitted	195	227	198	236	129	141	137	123	119	111	122	139	1877	7
Referral/follow-up	791	792	785	753	669	706	633	645	581	613	559	650	8177	30
Discharged	1406	1665	1639	1583	1289	1406	1406	1324	1270	1304	1287	1597	17176	62
Other	55	54	47	43	18	25	13	23	24	16	12	25	355	1
<b>Total</b>	<b>2447</b>	<b>2738</b>	<b>2669</b>	<b>2615</b>	<b>2105</b>	<b>2278</b>	<b>2189</b>	<b>2115</b>	<b>1994</b>	<b>2044</b>	<b>1980</b>	<b>2411</b>	<b>27585</b>	<b>100</b>

**Table 5: Rochdale Infirmary ED: Total injury attendances by method of disposal and injury group, April 2010 to March 2011**

Disposal	Assault		Bites & stings		Burns & scalds		DSH		Fall		Other injury		RTC		Total	
	n	%	n	%	n	%	n	%	n	%	n	%	n	%	n	%
Admitted	131	12	***	***	***	***	45	26	958	17	646	4	59	3	1877	7
Referral/follow-up	227	21	167	22	436	56	45	26	1699	29	5232	31	371	19	8177	30
Discharged	599	56	576	77	307	39	55	32	3030	52	11097	65	1512	76	17176	62
Other	104	10	***	***	***	***	26	15	112	2	43	0	59	3	355	1
<b>Total</b>	<b>1061</b>	<b>100</b>	<b>751</b>	<b>100</b>	<b>784</b>	<b>100</b>	<b>171</b>	<b>100</b>	<b>5799</b>	<b>100</b>	<b>17018</b>	<b>100</b>	<b>2001</b>	<b>100</b>	<b>27585</b>	<b>100</b>

**Table 6: Rochdale Infirmary ED: Total injury attendances by mode of arrival and month, April 2010 to March 2011**

Arrival mode	Apr	May	Jun	Jul	Aug	Sep	Oct	Nov	Dec	Jan	Feb	Mar	Total	%
Private transport	1598	1861	1784	1785	1547	1616	1556	1494	1398	1442	1344	1706	19131	69
Ambulance	343	366	379	380	163	172	168	179	163	144	123	189	2769	10
Taxi	157	192	203	160	142	192	191	161	173	165	192	180	2108	8
Foot	111	76	110	87	79	105	95	81	70	89	87	115	1105	4
Not recorded	82	103	73	96	76	84	74	89	87	111	94	84	1053	4
Public transport	26	26	43	30	42	44	44	43	29	36	33	40	436	2
Unknown	89	67	23	21	14	23	20	20	27	15	43	34	396	1
Work transport	21	31	25	26	25	22	22	28	20	17	35	42	314	1
Other	16	9	21	23	9	17	13	13	15	13	13	13	175	1
Police	***	***	***	***	***	***	***	***	***	***	***	***	97	0
Helicopter	***	***	***	***	***	***	***	***	***	***	***	***	1	0
<b>Total</b>	<b>2447</b>	<b>2738</b>	<b>2669</b>	<b>2615</b>	<b>2105</b>	<b>2278</b>	<b>2189</b>	<b>2115</b>	<b>1994</b>	<b>2044</b>	<b>1980</b>	<b>2411</b>	<b>27585</b>	<b>100</b>

<sup>5</sup> Admitted=admitted to ED bed/became a lodged patient of the same health care provider; Discharged=discharged - did not require any follow up treatment; Referral/follow-up =discharged - follow up treatment to be provided by GP, referred to ED clinic, referred to fracture clinic, referred to other out-patient clinic, referred to other health care professional; Other=died in department, left department before being treated, left department having refused treatment, other.

**Table 7: Rochdale Infirmary ED: Assault attendances by gender, incident location, age group and day/time of attendance, April 2010 to March 2011**

	Assaults % (n=1,061)		All injuries % (n=27,585)
<b>Sex</b>			
Female	283	27	45
Male	778	73	55
<b>Location</b>			
Public place	510	48	14
Home	172	16	41
Other	242	23	25
Work	45	4	6
Educational establishment	38	4	6
Not recorded	54	5	8
<b>Age group</b>			
0 - 4	***	***	11
5 - 19	297	28	27
20 - 34	408	39	23
35 - 49	275	26	17
50 - 64	70	7	11
65 plus	***	***	11
<b>Day &amp; time</b>			
Weekend nights*	264	25	5
Weekend days	298	28	23
Weekdays	499	47	72

\*8pm to 4am, Friday evening/Saturday morning, Saturday evening/Sunday morning, Sunday evening/Monday morning

