

### Injury attendances to Royal Albert Edward Infirmary Emergency Department

#### April 2008 to March 2009

This report summarises recorded injury attendances to Royal Albert Edward Infirmary Emergency Department (ED) between April 2008 and March 2009.

Between April 2008 and March 2009 there were 34,633 injury attendances to Royal Albert Edward Infirmary ED. Males accounted for over half of all attendances (n=19,714; 57%). The month with the highest attendances for injury was June (n=3,198) with February having the lowest attendances (n=2,419) (Figure 1). The majority of attendances were recorded as other injury (91%). Assaults accounted for 4% of all injury attendances (Table 1).

For all injuries, the highest proportions of attendances were for persons aged 5 to 19 (26%) and 20 to 34 (24%) (Figure 2). Over four in ten (42%) of assault attendees were aged 20 to 34. Nearly four in ten (38%) of deliberate self harm (DSH) attendees were aged 20 to 34. Over a third (36%) of road traffic collision (RTC) attendees were aged 20 to 34 (Figure 3).

Table 2 shows the location of the incident of injury attendances. Over half (51%) of injuries occurred in the home. Over a third (34%) of assaults occurred in a public place. Over seven in ten (72%) of DSH injuries occurred in the home.

Table 3 shows the ethnicity of injury attendees to Royal Albert Edward Infirmary ED. Over two-thirds (n=23,955; 69%) were recorded as white, 29% were recorded as not known.

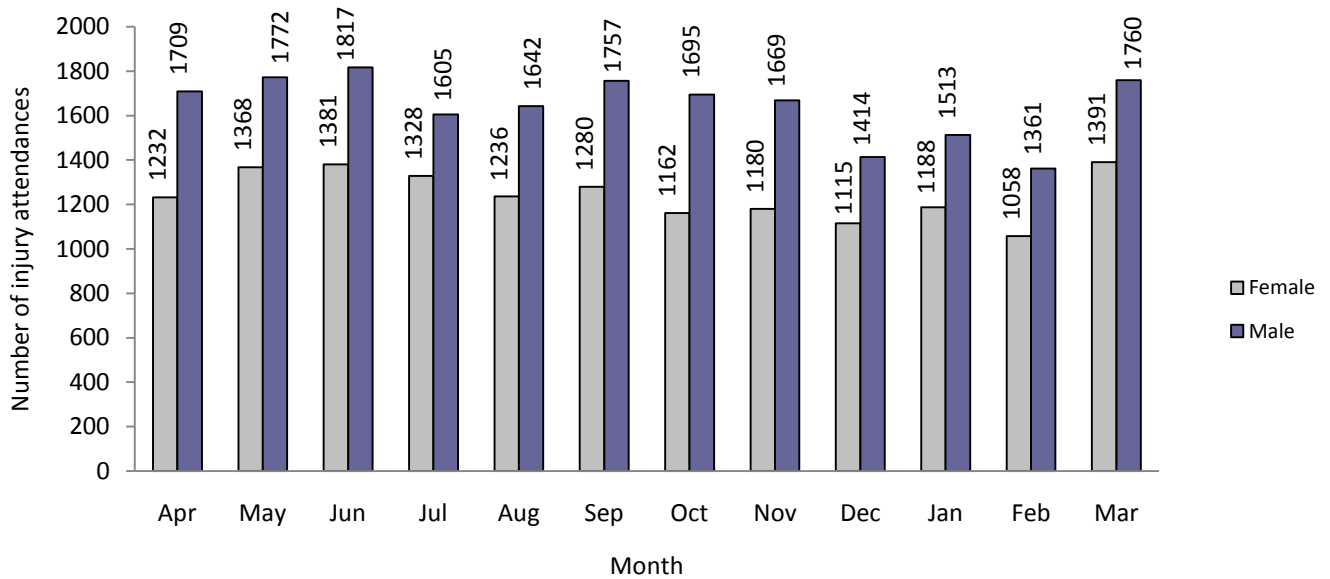
The disposal of a patient can give an indication of the severity of the injuries sustained. Over a half (53%) of attendees were discharged, over two-fifths (42%) were referred and 4% were admitted (Table 4). Three-quarters (75%) of RTC attendees were discharged. Over half (52%) of DSH attendees had a referral/follow-up (Table 5).

Table 6 shows the arrival methods of injury attendances at Royal Albert Edward Infirmary ED. Around one in seven (15%) arrived by ambulance.

Figure 4 (a-d) shows crude rates of attendance at Royal Albert Edward Infirmary ED by attendee's area of residence, in this case Middle Super Output Area (MSOA). The MSOAs with the highest crude rates are indicated beneath each figure.<sup>1</sup>

<sup>1</sup> Population figures are drawn from mid-2008 population estimates from the Office for National Statistics.

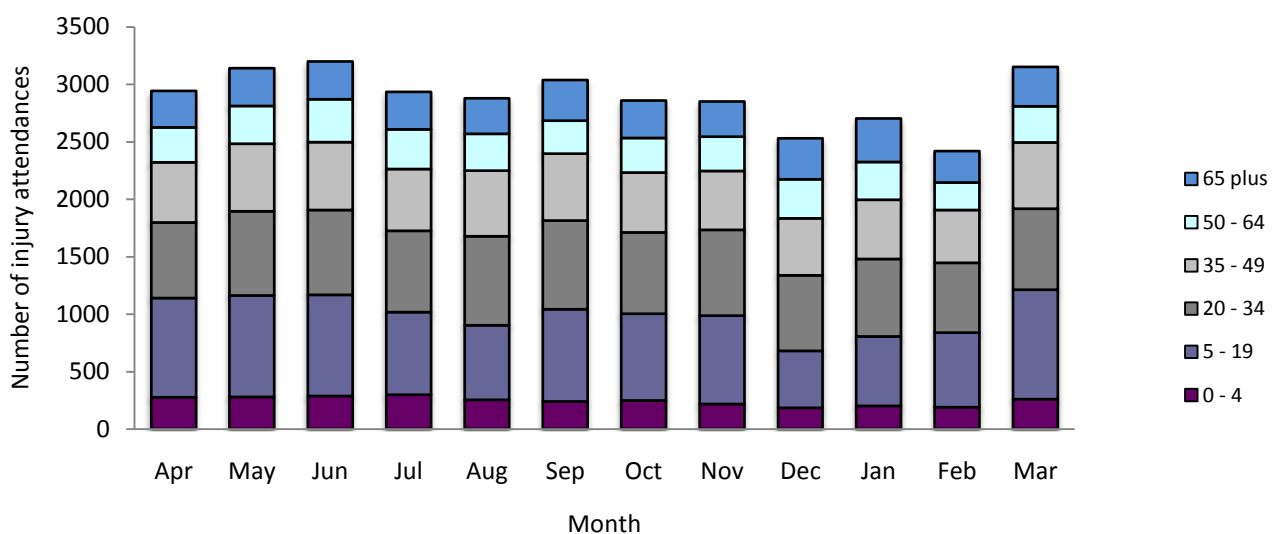
**Figure 1: Royal Albert Edward Infirmary ED: Total injury attendances by gender and month, April 2008 to March 2009**



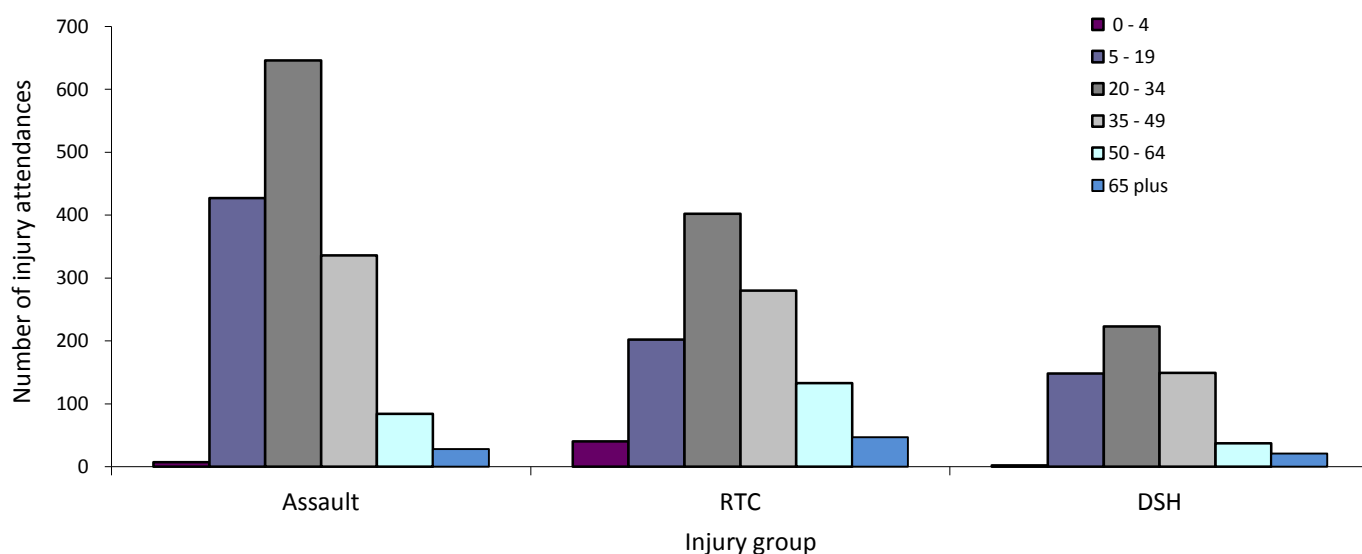
**Table 1: Royal Albert Edward Infirmary ED: Total injury attendances by injury group and month, April 2008 to March 2009**

Injury group	Apr	May	Jun	Jul	Aug	Sep	Oct	Nov	Dec	Jan	Feb	Mar	Total	%
Other injury	2687	2878	2935	2702	2579	2740	2560	2540	2283	2445	2185	2887	31421	91
Assault	122	143	130	110	126	128	118	137	129	103	139	143	1528	4
RTC	89	82	83	68	106	115	126	124	79	96	63	73	1104	3
DSH	43	37	50	53	67	54	53	48	38	57	32	48	580	2
<b>Total</b>	<b>2941</b>	<b>3140</b>	<b>3198</b>	<b>2933</b>	<b>2878</b>	<b>3037</b>	<b>2857</b>	<b>2849</b>	<b>2529</b>	<b>2701</b>	<b>2419</b>	<b>3151</b>	<b>34633</b>	<b>100</b>

**Figure 2: Royal Albert Edward Infirmary ED: Total injury attendances by age group and month, April 2008 to March 2009**



**Figure 3: Royal Albert Edward Infirmary ED: Total injury attendances by age group and injury group (excluding other injury), April 2008 to March 2009**



**Table 2: Royal Albert Edward Infirmary ED: Total injury attendances by location of incident and injury group, April 2008 to March 2009<sup>2</sup>**

Location	Assault		DSH		Other injury		RTC		Total	
	n	%	n	%	n	%	n	%	n	%
Home	432	28	415	72	16724	53	64	6	17635	51
Other	487	32	108	19	8357	27	1015	92	9967	29
Public place	514	34	53	9	2190	7	16	1	2773	8
Work	62	4	***	***	2612	8	***	***	2684	8
Education establishment	33	2	***	***	1507	5	***	***	1543	4
Not recorded	0	0	***	***	31	0	***	***	31	0
<b>Total</b>	<b>1528</b>	<b>100</b>	<b>580</b>	<b>100</b>	<b>31421</b>	<b>100</b>	<b>1104</b>	<b>100</b>	<b>34633</b>	<b>100</b>

**Table 3: Royal Albert Edward Infirmary ED: Total injury attendances by ethnicity and month, April 2008 to March 2009<sup>3</sup>**

Ethnicity	Apr	May	Jun	Jul	Aug	Sep	Oct	Nov	Dec	Jan	Feb	Mar	Total	%
White	2024	2157	2190	1911	1898	2106	1952	2006	1755	1913	1755	2288	23955	69
Not known	884	923	976	993	926	897	877	803	732	753	624	820	10208	29
Not stated	14	25	16	19	34	14	8	12	9	11	13	25	200	1
Black	***	6	***	***	6	***	***	6	6	10	7	***	60	0
Mixed	***	13	6	***	***	***	5	7	6	***	5	6	60	0
Bangladeshi	6	7	***	***	***	***	***	5	6	***	5	***	41	0
Any other Asian background	***	***	***	***	***	***	***	***	***	***	***	***	36	0
Chinese	***	***	***	***	***	***	***	***	***	***	***	***	28	0
Indian	***	***	***	***	***	***	***	***	7	***	***	***	24	0
Pakistani	***	***	***	***	***	***	***	5	***	***	***	***	14	0
Any other ethnic group	***	***	***	***	***	***	***	***	***	***	***	***	7	0
<b>Total</b>	<b>2941</b>	<b>3140</b>	<b>3198</b>	<b>2933</b>	<b>2878</b>	<b>3037</b>	<b>2857</b>	<b>2849</b>	<b>2529</b>	<b>2701</b>	<b>2419</b>	<b>3151</b>	<b>34633</b>	<b>100</b>

<sup>2</sup> Please note that all numbers less than five have been suppressed in line with patient confidentiality and if there is only one number <5 in a category then two numbers will be suppressed at the next level.

<sup>3</sup> White = Irish, British, other white background; Mixed = white and black, white and Asian, mixed any other; Other = any other ethnic group, any other Asian background; Black = African, Caribbean, other black.

**Table 4: Royal Albert Edward Infirmary ED: Total injury attendances by method of disposal and month, April 2008 to March 2009<sup>4</sup>**

Method	Apr	May	Jun	Jul	Aug	Sep	Oct	Nov	Dec	Jan	Feb	Mar	Total	%
Discharged	1568	1589	1674	1458	1532	1568	1567	1583	1379	1471	1263	1594	18246	53
Referred/ follow-up	1233	1395	1384	1346	1182	1293	1158	1135	1001	1083	1037	1409	14656	42
Admitted	121	133	124	109	139	152	113	115	116	129	100	118	1469	4
Other	19	23	16	20	25	24	19	16	33	18	19	30	262	1
<b>Total</b>	<b>2941</b>	<b>3140</b>	<b>3198</b>	<b>2933</b>	<b>2878</b>	<b>3037</b>	<b>2857</b>	<b>2849</b>	<b>2529</b>	<b>2701</b>	<b>2419</b>	<b>3151</b>	<b>34633</b>	<b>100</b>

**Table 5: Royal Albert Edward Infirmary ED: Total injury attendances by method of disposal and injury group, April 2008 to March 2009**

Method	Assault		DSH		Other injury		RTC		Total	
	n	%	n	%	n	%	n	%	n	%
Discharged	742	49	157	27	16522	53	825	75	18246	53
Referred/ follow-up	712	47	303	52	13387	43	254	23	14656	42
Admitted	***	***	101	17	1311	4	***	***	1469	4
Other	***	***	19	3	201	1	***	***	262	1
<b>Total</b>	<b>1528</b>	<b>100</b>	<b>580</b>	<b>100</b>	<b>31421</b>	<b>100</b>	<b>1104</b>	<b>100</b>	<b>34633</b>	<b>100</b>

**Table 6: Royal Albert Edward Infirmary ED: Total injury attendances by mode of arrival and month, April 2008 to March 2009**

Mode	Apr	May	Jun	Jul	Aug	Sep	Oct	Nov	Dec	Jan	Feb	Mar	Total	%
Other	2533	2726	2770	2523	2453	2623	2451	2385	2062	2233	2030	2712	29501	85
Ambulance	408	414	428	410	425	414	406	464	467	468	389	439	5132	15
<b>Total</b>	<b>2941</b>	<b>3140</b>	<b>3198</b>	<b>2933</b>	<b>2878</b>	<b>3037</b>	<b>2857</b>	<b>2849</b>	<b>2529</b>	<b>2701</b>	<b>2419</b>	<b>3151</b>	<b>34633</b>	<b>100</b>

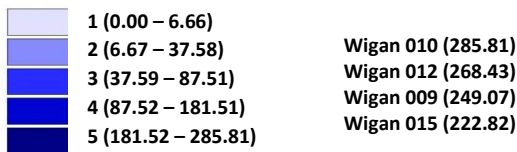
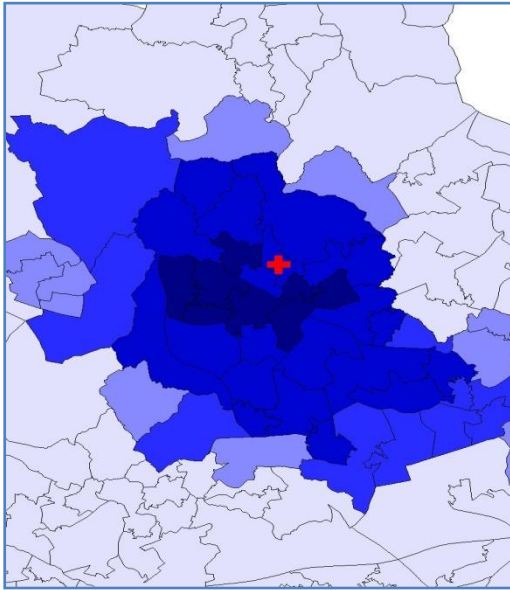
For further information please contact: Centre for Public Health, Research Directorate, Liverpool John Moores University, 3<sup>rd</sup> Floor, Henry Cotton Building, 15-21 Wester Street, Liverpool, L3 2ET Tel: 0151 231 4513 or Email: [i.j.warren@ljmu.ac.uk](mailto:i.j.warren@ljmu.ac.uk)  
Website: [www.tiig.info](http://www.tiig.info) (data requests should be made through the website)

<sup>4</sup> Admitted=admitted to ED bed/became a lodged patient of the same health care provider; Discharged=discharged - did not require any follow up treatment; Referral/follow-up =discharged - follow up treatment to be provided by GP, referred to ED clinic, referred to fracture clinic, referred to other out-patient clinic, transferred to other health care provider, referred to other health care professional; Other=died in department, left department before being treated, left department having refused treatment, other.

**Figure 4a,b,c,d: Middle Super Output Area of residence for injury attendances to Royal Albert Edward Infirmary ED. Quintiles of crude rates per 1,000 population, April 2008 to March 2009**

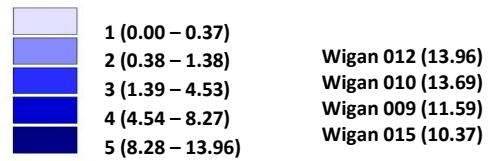
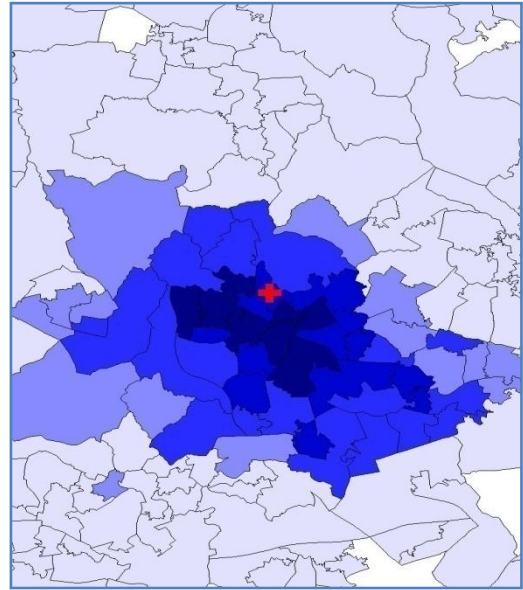
a) All attendances: quintiles of crude rates per 1,000 population

✚ Royal Albert Edward Infirmary ED



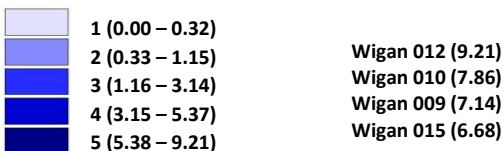
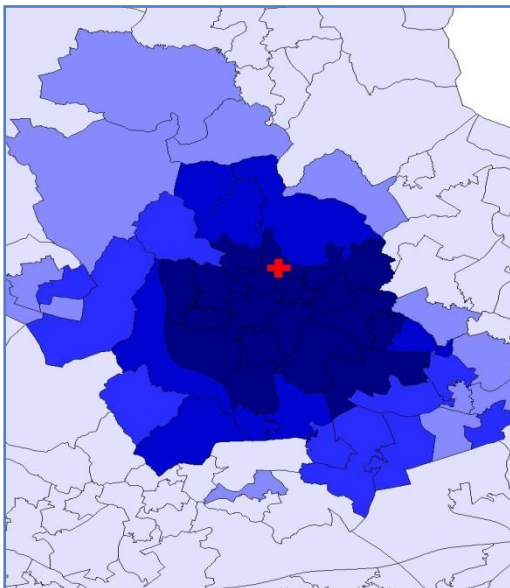
b) Assault: quintiles of crude rates per 1,000 population

✚ Royal Albert Edward Infirmary ED



c) RTC: quintiles of crude rates per 1,000 population

✚ Royal Albert Edward Infirmary ED



d) DSH: quintiles of crude rates per 1,000 population

✚ Royal Albert Edward Infirmary ED

