

## Injury attendances to Royal Albert Edward Infirmary Emergency Department

### January to December 2011

This report summarises recorded injury attendances to Royal Albert Edward Infirmary Emergency Department (ED) between January and December 2011.

From January to December 2011 there were 33,437 injury attendances to Royal Albert Edward Infirmary ED. Males accounted for over half (57%) of all attendances. The month with the highest attendances for injury was May (n=3,265) with December (n=2,129) having the lowest attendances (**Figure 1**). The majority (93%) of attendances were recorded as other accident. Assaults accounted for 3% of all injury attendances, road traffic collisions (RTC) 2% and deliberate self-harm (DSH) 2% (**Table 1**).

For all injuries, the highest proportions of attendances were for persons aged 5 to 19 years (27%) or 20 to 34 years (24%) (**Figure 2**). Over four in ten (42%) DSH attendees were aged 20 to 34 years (**Figure 3**).

**Table 2** shows the location of the incident of injury attendances. Almost half (47%) of injuries occurred in the home, 9% occurred in a public place, 7% at work and 5% occurred at an educational establishment.

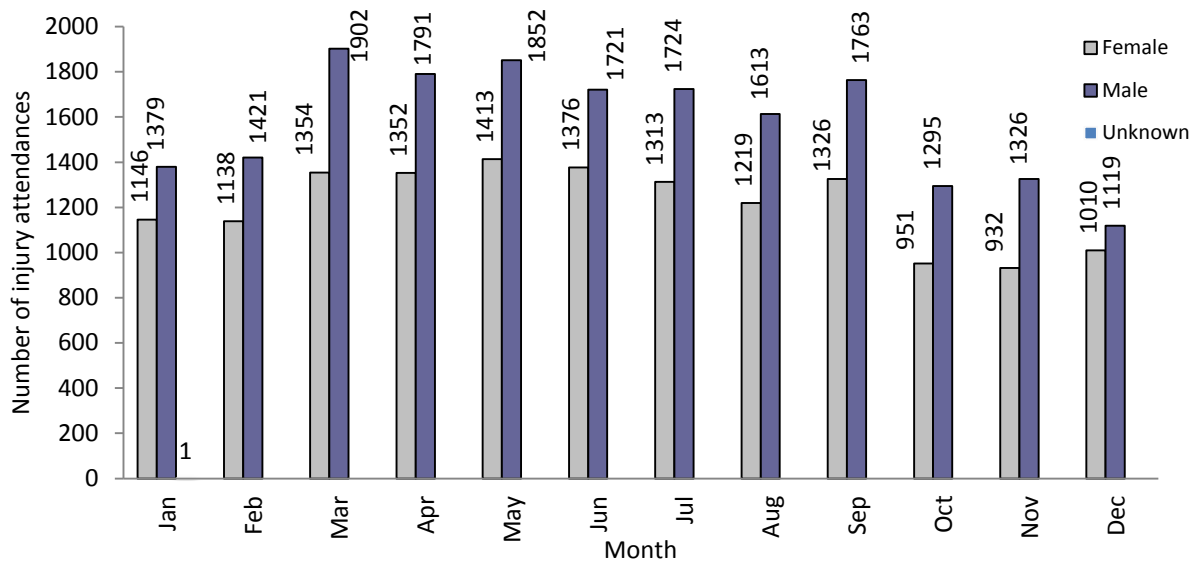
**Table 3** shows the ethnicity of injury attendees to Royal Albert Edward Infirmary ED. Over nine in ten (96%) were recorded as white.

The disposal of a patient can give an indication of the severity of the injuries sustained. Over half (55%) were discharged, nearly four in ten (38%) were referred and 4% were admitted (**Table 4**). Over four in five (83%) RTC attendees were discharged. Almost four in five (38%) assault attendees and 38% of DSH attendees had a referral/follow-up (**Table 5**).

**Table 6** shows the arrival methods of injury attendances at Royal Albert Edward Infirmary ED. Around one in seven (14%) arrived by ambulance.

**Table 7** shows assault attendances to Royal Albert Edward Infirmary ED. Over seven in ten (71%) of assault attendees were male and nearly half (46%) were aged 20 to 34 years. Almost a third (32%) occurred in a public place whilst the same proportion (32%) of assault attendees arrived at the ED by ambulance.

**Figure 1: Royal Albert Edward Infirmary ED: Total injury attendances by gender and month, January to December 2011**

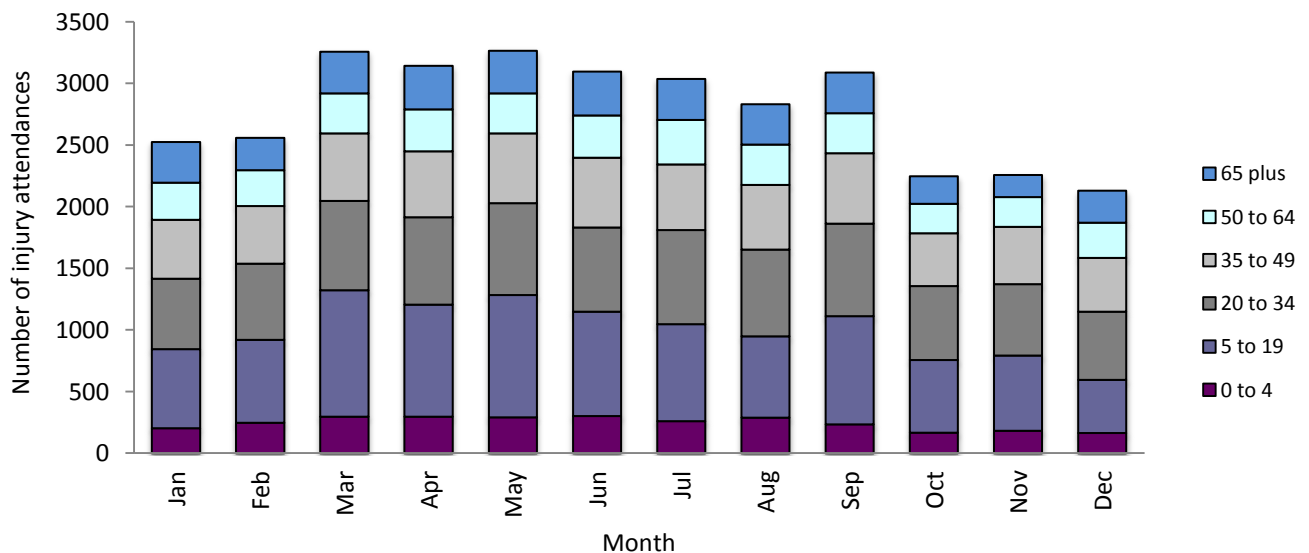


**Table 1: Royal Albert Edward Infirmary ED: Total injury attendances by injury group and month, January to December 2011\***

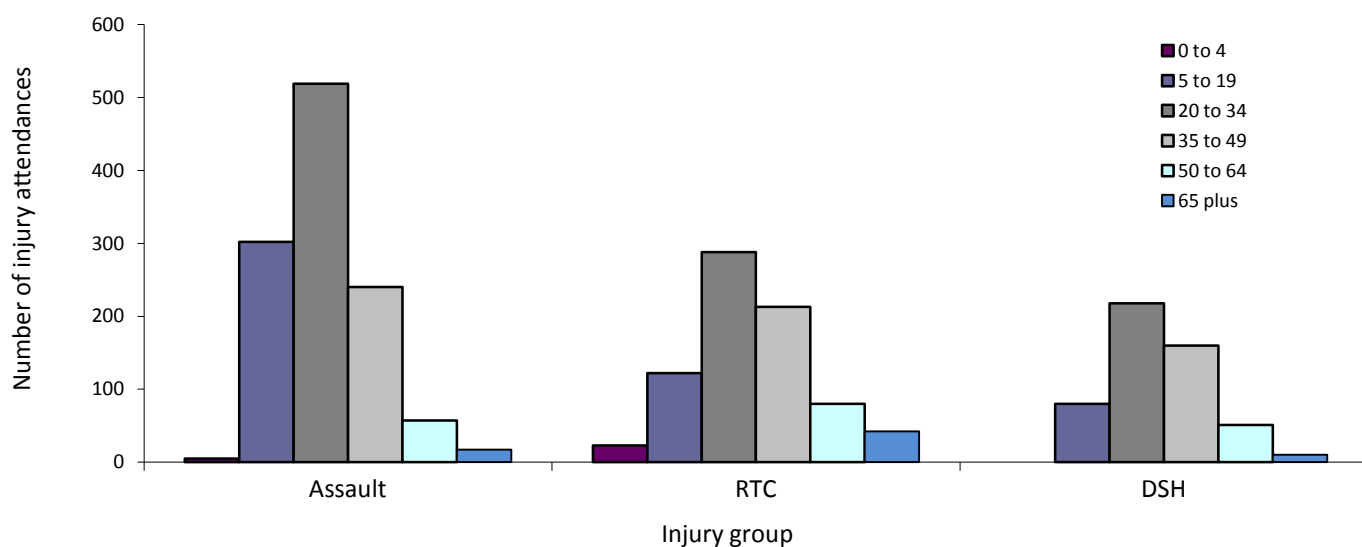
Injury group	Jan	Feb	Mar	Apr	May	Jun	Jul	Aug	Sep	Oct	Nov	Dec	Total	%
Other accident	2307	2335	3029	2906	3017	2885	2846	2603	2865	2089	2128	2000	31010	93
Assault	98	102	117	117	126	101	86	92	118	67	67	49	1140	3
RTC	71	80	61	71	75	64	56	90	51	53	34	62	768	2
DSH	50	42	49	49	47	47	49	47	55	37	29	18	519	2
<b>Total</b>	<b>2526</b>	<b>2559</b>	<b>3256</b>	<b>3143</b>	<b>3265</b>	<b>3097</b>	<b>3037</b>	<b>2832</b>	<b>3089</b>	<b>2246</b>	<b>2258</b>	<b>2129</b>	<b>33437</b>	<b>100</b>

\*Percentage may not add to 100 due to rounding.

**Figure 2: Royal Albert Edward Infirmary ED: Total injury attendances by age group and month, January to December 2011**



**Figure 3: Royal Albert Edward Infirmary ED: Total injury attendances by age group and injury group (excluding other accident), January to December 2011**



**Table 2: Royal Albert Edward Infirmary ED: Total injury attendances by location of incident and month, January to December 2011<sup>1</sup>**

Location	Jan	Feb	Mar	Apr	May	Jun	Jul	Aug	Sep	Oct	Nov	Dec	Total	%
Home	1274	1243	1489	1644	1556	1458	1466	1362	1409	938	927	903	15669	47
Other	787	774	1059	1066	1109	968	850	832	955	820	783	790	10793	32
Public place	163	180	206	176	210	267	385	398	308	242	210	196	2941	9
Work	163	193	209	165	198	237	231	230	264	151	173	169	2383	7
Education establishment	139	169	293	92	192	167	105	10	153	95	165	71	1651	5
<b>Total</b>	<b>2526</b>	<b>2559</b>	<b>3256</b>	<b>3143</b>	<b>3265</b>	<b>3097</b>	<b>3037</b>	<b>2832</b>	<b>3089</b>	<b>2246</b>	<b>2258</b>	<b>2129</b>	<b>33437</b>	<b>100</b>

**Table 3: Royal Albert Edward Infirmary ED: Total injury attendances by ethnicity and month, January to December 2011<sup>2\*</sup>**

Ethnicity	Jan	Feb	Mar	Apr	May	Jun	Jul	Aug	Sep	Oct	Nov	Dec	Total	%
White	2424	2479	3119	3019	3106	2960	2899	2706	2958	2170	2181	2061	32082	96
Not stated	42	41	61	43	64	48	50	40	48	24	21	17	499	1
Not recorded	27	22	37	48	65	50	53	59	53	30	29	26	499	1
Black	***	***	10	15	7	12	16	***	10	10	7	***	96	0
Mixed	10	6	***	12	8	9	7	10	***	***	***	6	83	0
Chinese	***	***	6	***	***	6	***	6	***	***	***	7	43	0
Indian	7	***	5	***	***	8	***	***	6	***	***	***	46	0
Asian other	***	***	5	***	***	***	***	6	6	***	***	5	42	0
Bangladeshi	6	***	7	***	***	***	***	***	***	***	***	***	16	0
Pakistani	***	***	***	***	***	***	***	***	***	***	***	***	11	0
Any other ethnic group	***	***	***	***	***	***	***	***	***	***	9	***	20	0
<b>Total</b>	<b>2526</b>	<b>2559</b>	<b>3256</b>	<b>3143</b>	<b>3265</b>	<b>3097</b>	<b>3037</b>	<b>2832</b>	<b>3089</b>	<b>2246</b>	<b>2258</b>	<b>2129</b>	<b>33437</b>	<b>100</b>

\*Percentages may not add up to 100 due to rounding.

<sup>1</sup> Please note that all numbers less than five have been suppressed in line with patient confidentiality and if there is only one number <5 in a category then two numbers will be suppressed at the next level.

<sup>2</sup> White=Irish, British, other white background; Mixed=white and black, white and Asian, mixed any other; Black=African, Caribbean, other black.

**Table 4: Royal Albert Edward Infirmary ED: Total injury attendances by method of disposal and month, January to December 2011<sup>3</sup>**

Disposal	Jan	Feb	Mar	Apr	May	Jun	Jul	Aug	Sep	Oct	Nov	Dec	Total	%
Discharged	1346	1483	1908	1802	1908	1853	1653	1573	1721	1134	1133	1034	18548	55
Referral/follow-up	1086	990	1237	1151	1171	1102	1227	1089	1186	822	829	778	12668	38
Admitted	***	***	105	134	147	125	133	139	131	73	81	86	1324	4
Other	***	***	6	56	39	17	24	31	51	217	215	231	897	3
<b>Total</b>	<b>2526</b>	<b>2559</b>	<b>3256</b>	<b>3143</b>	<b>3265</b>	<b>3097</b>	<b>3037</b>	<b>2832</b>	<b>3089</b>	<b>2246</b>	<b>2258</b>	<b>2129</b>	<b>33437</b>	<b>100</b>

**Table 5: Royal Albert Edward Infirmary ED: Total injury attendances by method of disposal and injury group, January to December 2011\***

Disposal	Assault		DSH		Other accident		RTC		Total	
	n	%	n	%	n	%	n	%	n	%
Discharged	635	56	217	42	17060	55	636	83	18548	55
Referral/follow-up	435	38	199	38	11922	38	112	15	12668	38
Admitted	30	3	48	9	1232	4	14	2	1324	4
Other	40	4	55	11	796	3	6	1	897	3
<b>Total</b>	<b>1140</b>	<b>100</b>	<b>519</b>	<b>100</b>	<b>31010</b>	<b>100</b>	<b>768</b>	<b>100</b>	<b>33437</b>	<b>100</b>

\*Percentages may not add up to 100 due to rounding.

**Table 6: Royal Albert Edward Infirmary ED: Total injury attendances by arrival mode and month, January to December 2011**

Arrival mode	Jan	Feb	Mar	Apr	May	Jun	Jul	Aug	Sep	Oct	Nov	Dec	Total	%
Other	2119	2245	2861	2724	2810	2685	2608	2451	2666	1889	1955	1798	28811	86
Ambulance	407	314	395	419	455	412	429	381	423	357	303	331	4626	14
<b>Total</b>	<b>2526</b>	<b>2559</b>	<b>3256</b>	<b>3143</b>	<b>3265</b>	<b>3097</b>	<b>3037</b>	<b>2832</b>	<b>3089</b>	<b>2246</b>	<b>2258</b>	<b>2129</b>	<b>33437</b>	<b>100</b>

**Table 7: Royal Albert Edward Infirmary ED: Total assault and injury attendances by gender, mode of arrival, incident location and age group, January to December 2011**

	Assault attendees		All injuries % (n=33,437)
	n	%	%
<b>Gender</b>			
Female	330	29	43
Male	810	71	57
<b>Arrival mode</b>			
Ambulance	369	32	14
Other	771	68	86
<b>Location</b>			
Other	380	33	32
Public place	369	32	9
Home	321	28	47
Work	36	3	7
Educational establishment	34	3	5
<b>Age group</b>			
0 to 4	5	0	9
5 to 19	302	26	27
20 to 34	519	46	24
35 to 49	240	21	18
50 to 64	57	5	11
65 plus	17	1	11

Author: Ian Warren, Published: March 2012

For further information please contact: Centre for Public Health, Research Directorate, Liverpool John Moores University, 2<sup>nd</sup> Floor, Henry Cotton Building, 15-21 Webster Street, Liverpool, L3 2ET, Tel: 0151 231 4513 or Email: [i.j.warren@ljmu.ac.uk](mailto:i.j.warren@ljmu.ac.uk) .Website: [www.tiig.info](http://www.tiig.info)

<sup>3</sup> Admitted=admitted to hospital bed; Discharged=discharged - did not require any follow up treatment; Referral/follow-up=discharged - follow up treatment to be provided by GP, referred to ED clinic, referred to fracture clinic, referred to other out-patient clinic, transferred to other health care provider; Other=died in department, left department before being treated, left department having refused treatment.