

Injury attendances to Royal Bolton Hospital Emergency Department

April 2011 to March 2012

This report summarises recorded injury attendances to Royal Bolton Emergency Department (ED) between April 2011 and March 2012.

Between April 2011 and March 2012 there were 42,563 injury attendances to Royal Bolton ED. Males accounted for over half (52%) of these attendances. The month with the highest attendances was May (n=3,892) with January having the lowest (n=3,314) (**Figure 1**). Of the specified injury groups falls (9%) accounted for the highest proportion followed by road traffic collision (RTC) (4%), sports injury (4%) and assault (4%) (**Table 1**).

The highest proportion of attendances was for persons aged 20-34 (24%) and 5-19 (20%) years (**Figure 2**). Almost half (47%) of fall attendees were aged 65 or over while nearly three in ten (29%) of burns and scalds injuries were sustained by 0 to 4 year olds. Nearly four in ten (39%) of RTC attendees were aged 20-34 (**Figure 3**).

Table 2 shows the ethnicity of attendees to Royal Bolton ED. Seven in ten (70%) were white.

The disposal of a patient can give an indication of the severity of the injuries sustained. Four in ten (40%) of attendees were referred, almost four in ten (38%) were discharged and 15% were admitted (**Table 3**). Almost a half (48%) of burns and scalds attendees were referred, while over a quarter (27%) of

deliberate self-harm (DSH) attendees were admitted. Over two-fifths (42%) of assault attendees were discharged. Over one in five (21%) of fall attendees were admitted (**Table 4**).

Table 5 shows the arrival methods of attendances at Royal Bolton ED. Three-quarters (75%) of attendees arrived by foot, whilst a quarter (25%) arrived by ambulance.

Table 6 shows the location of the incident of the main injury groups (excluding other injury). Almost six in ten (57%) injuries occurred in the home. Over four-fifths (84%) of burns and scalds occurred in the home. Almost one in five (19%) of sports injuries occurred in an educational establishment.

Table 7 presents data for assault attendees to Royal Bolton ED. Males represent over seven in ten (72%) of assault attendances, whilst almost half (47%) of assault attendees were aged 20 to 34. Almost half (48%) of assault attendees arrived by ambulance.

Figure 1: Royal Bolton ED: Total injury attendances by gender and month, April 2011 to March 2012

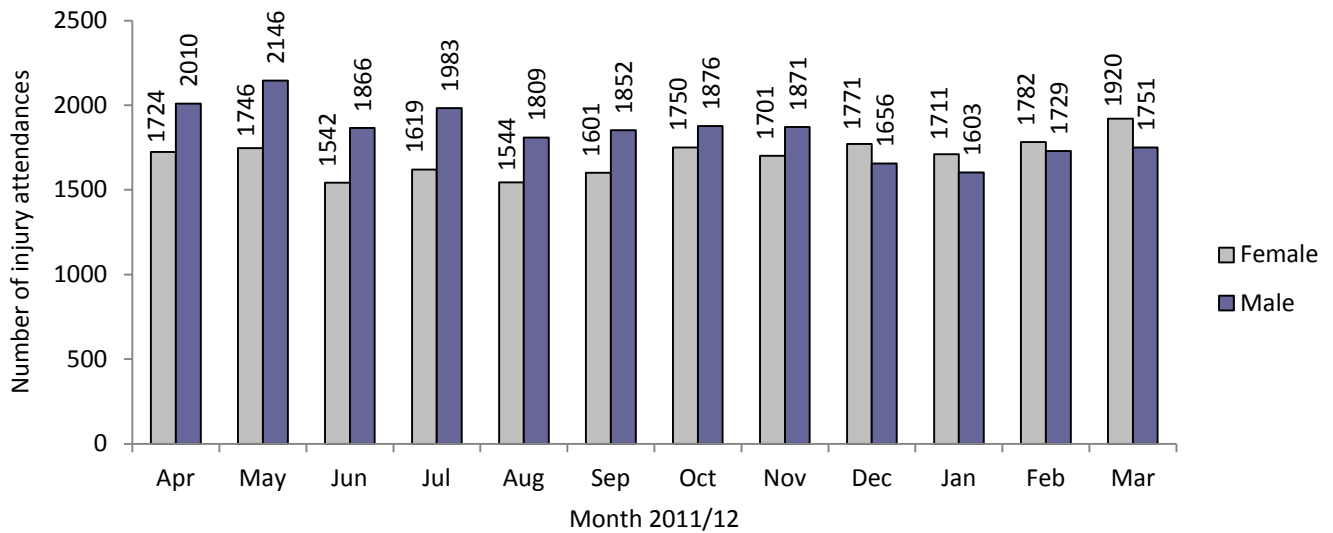
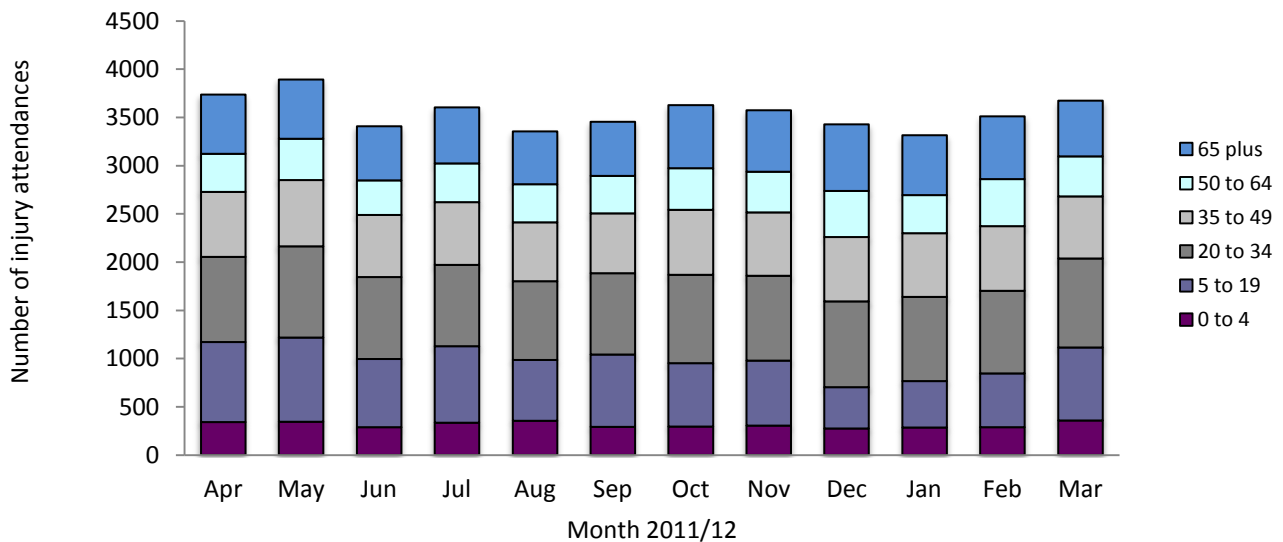


Table 1: Royal Bolton ED: Total injury attendances by injury group and month, April 2011 to March 2012¹

Injury group	Apr	May	Jun	Jul	Aug	Sep	Oct	Nov	Dec	Jan	Feb	Mar	Total	%
Other injury	2668	2910	2516	2571	2393	2493	2671	2766	2619	2476	2702	2705	31490	74
Fall	366	329	271	348	335	334	315	226	329	273	323	301	3750	9
RTC	125	157	161	132	167	132	172	124	149	156	125	159	1759	4
Sports injury	206	199	144	163	101	170	156	162	47	108	114	174	1744	4
Assault	175	120	110	152	123	125	139	132	129	133	100	149	1587	4
Burns and scalds	87	73	74	64	73	73	70	84	73	81	70	64	886	2
Bites and stings	69	60	98	117	112	86	70	44	41	43	49	59	848	2
DSH	38	44	34	55	49	40	33	34	40	44	28	60	499	1
Total	3734	3892	3408	3602	3353	3453	3626	3572	3427	3314	3511	3671	42563	100

Figure 2: Royal Bolton ED: Total injury attendances by age group and month, April 2011 to March 2012



¹ Firework injury has been included in other injury due to low numbers (n<5)

Figure 3: Royal Bolton ED: Total injury attendances by age group and injury group (excluding other injury), April 2011 to March 2012

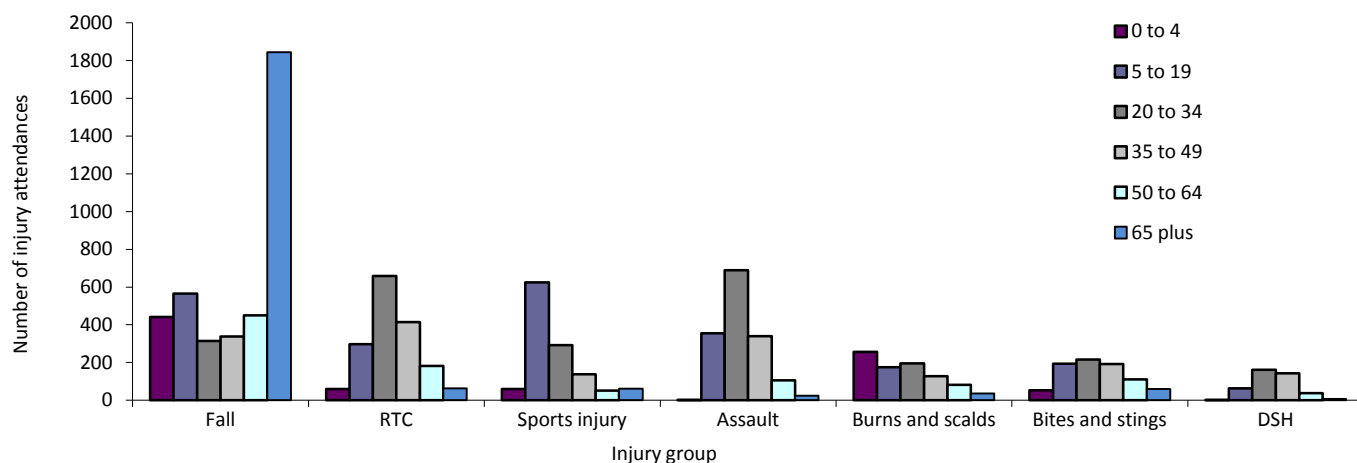


Table 2: Royal Bolton ED: Total injury attendances by ethnicity and month, April 2011 to March 2012^{2*}

Ethnicity	Apr	May	Jun	Jul	Aug	Sep	Oct	Nov	Dec	Jan	Feb	Mar	Total	%
White	2570	2772	2364	2498	2318	2416	2600	2543	2425	2378	2496	2570	29950	70
Not Stated	523	494	482	439	472	455	422	444	387	355	419	460	5352	13
Not Known	337	322	288	370	306	315	309	303	298	304	301	350	3803	9
Indian	88	87	99	108	76	99	111	91	96	94	94	89	1132	3
Pakistani	91	103	96	93	89	91	93	93	113	89	90	110	1151	3
Black	37	29	30	30	24	16	26	23	29	29	22	26	321	1
Mixed	37	31	14	20	25	24	30	25	22	30	37	25	320	1
Any other ethnic group	19	25	17	16	26	16	17	20	28	18	26	20	248	1
Any other Asian background	22	21	17	18	11	19	10	21	22	12	18	15	206	1
Chinese	***	***	***	***	***	***	***	***	***	***	***	***	42	0
Bangladeshi	***	***	***	***	***	***	***	***	***	***	***	***	38	0
Total	3734	3892	3408	3602	3353	3453	3626	3572	3427	3314	3511	3671	42563	100

*Percentages may not add up to 100 due to rounding

Table 3: Royal Bolton ED: Total injury attendances by method of disposal and month, April 2011 to March 2012

Disposal	Apr	May	Jun	Jul	Aug	Sep	Oct	Nov	Dec	Jan	Feb	Mar	Total	%
Referred/follow-up	1478	1557	1288	1389	1280	1353	1570	1530	1415	1304	1386	1420	16970	40
Discharged	1384	1471	1339	1445	1408	1371	1309	1245	1172	1200	1294	1434	16072	38
Admitted	533	577	514	506	410	501	498	546	609	594	586	570	6444	15
Other	339	287	267	262	255	228	249	251	231	216	245	247	3077	7
Total	3734	3892	3408	3602	3353	3453	3626	3572	3427	3314	3511	3671	42563	100

Table 4: Royal Bolton ED: Total injury attendances by method of disposal and injury group (excluding other injury), April 2011 to March 2012*

Disposal	Assault		Bites and stings		Burns and scalds		DSH		Fall		RTC		Sports injury		Total	
	n	%	n	%	n	%	n	%	n	%	n	%	n	%	n	%
Discharged	665	42	410	48	365	41	106	21	1302	35	900	51	847	49	4595	41
Referred/follow-up	572	36	351	41	422	48	159	32	1217	32	695	40	735	42	4151	37
Admitted	83	5	23	3	15	2	133	27	805	21	81	5	104	6	1244	11
Other	267	17	64	8	84	9	101	20	426	11	83	5	58	3	1083	10
Total	1587	100	848	100	886	100	499	100	3750	100	1759	100	1744	100	11073	100

*Percentages may not add up to 100 due to rounding

² Please note that all numbers less than five have been suppressed in line with patient confidentiality and if there is only one number <5 in a category then two numbers will be suppressed at the next level.

Table 5: Royal Bolton ED: Total injury attendances by arrival mode and month, April 2011 to March 2012

Arrival mode	Apr	May	Jun	Jul	Aug	Sep	Oct	Nov	Dec	Jan	Feb	Mar	Total	%
Foot	2822	2956	2537	2761	2564	2587	2701	2658	2445	2381	2591	2727	31730	75
Ambulance	908	932	865	833	783	860	918	899	976	925	915	933	10747	25
Other	***	***	6	8	6	6	7	15	6	8	5	11	86	0
Total	3734	3892	3408	3602	3353	3453	3626	3572	3427	3314	3511	3671	42563	100

Table 6: Royal Bolton ED: Total injury attendances by location and injury group (excluding other injury), April 2011 to March 2012*

Incident location	Assault		Bites & stings		Burns & scalds		DSH		Fall		RTC		Sports injury		Total	
	n	%	n	%	n	%	n	%	n	%	n	%	n	%	n	%
Educational establishment	***	1	***	1	***	0	***	0	91	2	5	0	336	19	462	4
Home	736	46	536	63	741	84	387	78	2795	75	536	30	602	35	6333	57
Not specified	***	0	***	0	***	0	***	0	11	0	***	0	***	0	12	0
Other	437	28	219	26	102	12	78	16	683	18	557	32	517	30	2593	23
Public place	359	23	65	8	8	1	34	7	144	4	658	37	287	16	1555	14
Work	31	2	22	3	34	4	***	0	26	1	***	0	***	0	118	1
Total	1587	100	848	100	886	100	499	100	3750	100	1759	100	1744	100	11073	100

*Percentages may not add up to 100 due to rounding.

Table 7: Royal Bolton ED: Total assault attendances by gender, arrival mode, location of incident and age group of attendance, April 2011 to March 2012*

	Assault attendees		All injury attendees (n=42,563)
	n	%	%
Gender			
Male	1142	72	52
Female	445	28	48
Arrival mode	N	%	%
Ambulance	769	48	25
Foot	809	52	75
Other	9	0	0
Location	n	%	%
Not specified	***	0	0
Home	736	46	70
Public place	359	23	7
Other	437	27	18
Work	31	2	2
Educational establishment	***	1	3
Age group	n	%	%
0 - 4	***	0	9
5 - 19	351	22	19
20 - 34	749	47	25
35 - 49	373	24	18
50 - 64	84	5	12
65 plus	***	2	17

*Percentages may not add up to 100 due to rounding.

Author: Ian Warren, Published: May 2012

For further information please contact: Centre for Public Health, Research Directorate, Liverpool John Moores University, 2nd Floor, Henry Cotton Building, 15-21 Webster Street, Liverpool, L3 2ET, Tel: 0151 231 4513 or Email: i.j.warren@ljmu.ac.uk
 Website: www.tiig.info (data requests should be made through the website)