

Injury attendances to Royal Bolton Hospital Emergency Department

July 2011 to June 2012

This report summarises recorded injury attendances to Royal Bolton Emergency Department (ED) between July 2011 and June 2012.

Between July 2011 and June 2012 there were 41,745 injury attendances to Royal Bolton ED. Males accounted for over half (53%) of these attendances. The month with the highest attendances was May (n=3,772) with June having the lowest (n=3,059) (**Figure 1**). Of the specified injury groups falls (9%) accounted for the highest proportion followed by road traffic collision (RTC) (4%), sports injury (4%) and assault (4%) (**Table 1**).

The highest proportion of attendances was for persons aged 20 to 34 (25%) and 35 to 49 (18%) years (**Figure 2**). Over a half (51%) of fall attendees were aged 65 or over while nearly three in ten (29%) of burns and scalds injuries were sustained by 0 to 4 year olds. Nearly four in ten (38%) of RTC attendees were aged 20-34 (**Figure 3**).

Table 2 shows the ethnicity of attendees to Royal Bolton ED. Seven in ten (70%) were white.

The disposal of a patient can give an indication of the severity of the injuries sustained. Almost four in ten (39%) of attendees were referred, almost four in ten (38%) were discharged and 15% were admitted (**Table 3**). Almost a half (47%) of burns and scalds attendees were referred, while over a quarter (26%)

of deliberate self-harm (DSH) attendees were admitted. Over two-fifths (44%) of assault attendees were discharged. Almost a quarter (23%) of fall attendees were admitted (**Table 4**).

Table 5 shows the arrival methods of attendances at Royal Bolton ED. Almost three-quarters (74%) of attendees arrived on foot, whilst a quarter (25%) arrived by ambulance.

Table 6 shows the location of the incident of the main injury groups (excluding other injury). Over half (56%) injuries occurred in the home. Over four-fifths (81%) of burns and scalds occurred in the home. Over one in five (21%) of sports injuries occurred in an educational establishment.

Table 7 presents data for assault attendees to Royal Bolton ED. Males represent over seven in ten (72%) of assault attendances, whilst almost half (47%) of assault attendees were aged 20 to 34. Almost half (46%) of assault attendees arrived by ambulance.

Figure 1: Royal Bolton ED: Total injury attendances by gender and month, July 2011 to June 2012

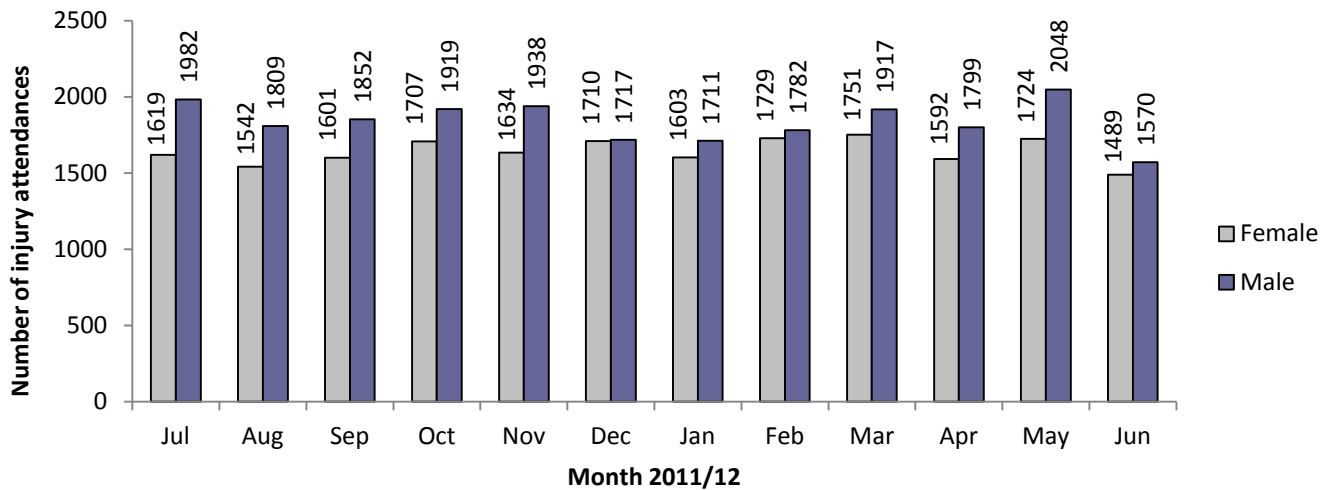
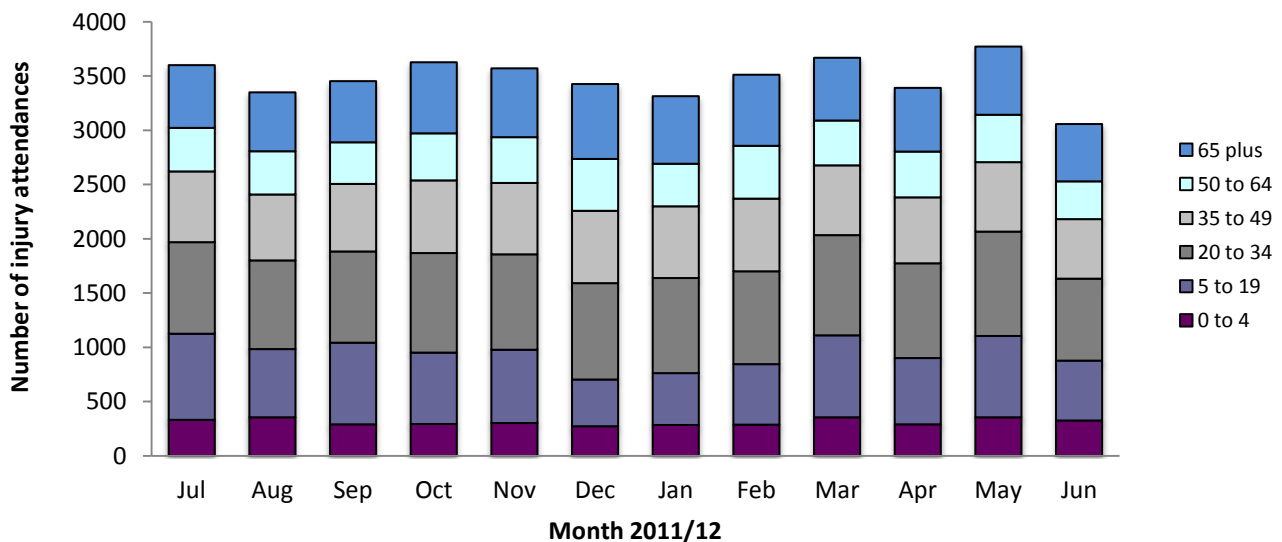


Table 1: Royal Bolton ED: Total injury attendances by injury group and month, July 2011 to June 2012¹

Injury group	Jul	Aug	Sep	Oct	Nov	Dec	Jan	Feb	Mar	Apr	May	Jun	Total	%
Other injury	2570	2391	2493	2671	2766	2619	2476	2702	2702	2578	2764	2221	30953	74
Fall	348	335	334	315	226	329	273	323	301	296	361	337	3778	9
RTC	132	167	132	172	124	149	156	125	159	153	183	136	1788	4
Sports injury	163	101	170	156	162	47	108	114	174	105	154	78	1532	4
Assault	152	123	125	139	132	129	133	100	149	94	120	116	1512	4
Bites and stings	117	112	86	70	44	41	43	49	59	70	82	89	862	2
Burns and scalds	64	73	73	70	84	73	81	70	64	61	70	52	835	2
DSH	55	49	40	33	34	40	44	28	60	34	38	30	485	1
Total	3601	3351	3453	3626	3572	3427	3314	3511	3668	3391	3772	3059	41745	100

Figure 2: Royal Bolton ED: Total injury attendances by age group and month, July 2011 to June 2012



¹ Firework injury has been included in other injury due to low numbers (n=12)

Figure 3: Royal Bolton ED: Total injury attendances by age group and injury group (excluding other injury), July 2011 to June 2012

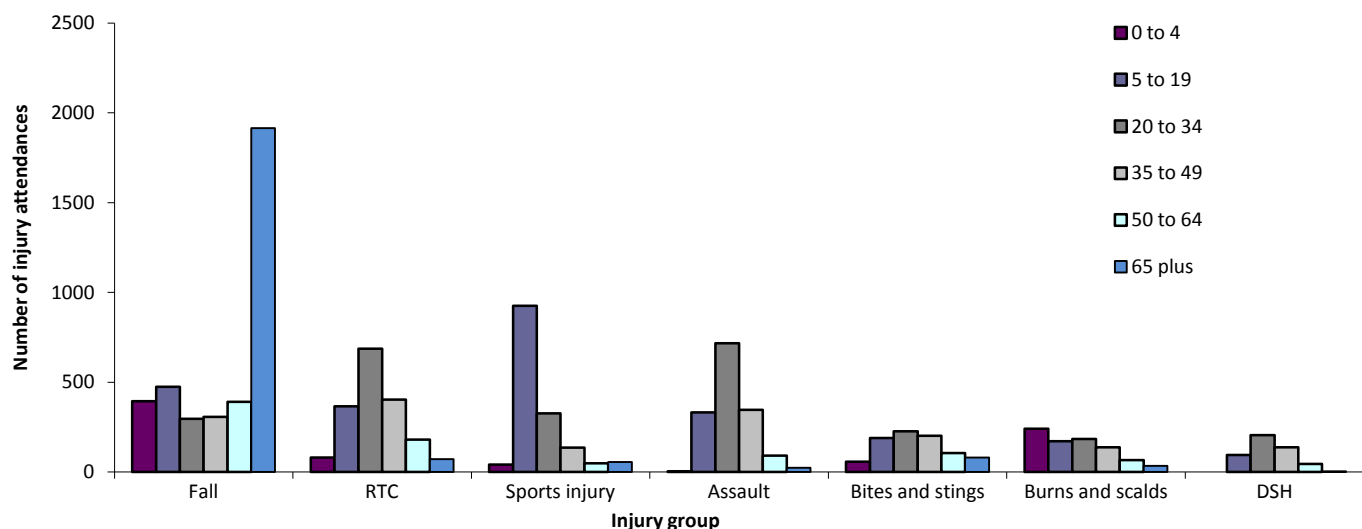


Table 2: Royal Bolton ED: Total injury attendances by ethnicity and month, July 2011 to June 2012²

Ethnic group	Jul	Aug	Sep	Oct	Nov	Dec	Jan	Feb	Mar	Apr	May	Jun	Total	%
White	2498	2317	2416	2600	2543	2425	2378	2496	2567	2402	2630	2095	29367	70
Not stated	437	468	452	422	444	386	355	419	460	356	457	402	5058	12
Not known	371	309	318	309	303	299	304	301	350	332	375	299	3870	9
Pakistani	93	89	91	93	93	113	89	90	110	109	102	89	1161	3
Indian	108	76	99	111	91	96	94	94	89	98	115	82	1153	3
Mixed	20	25	24	30	25	22	30	37	25	32	29	27	326	1
Black	30	24	16	26	23	29	29	22	26	19	24	19	287	1
Any other ethnic group	16	26	16	17	20	28	18	26	20	22	25	24	258	1
Any other Asian background	18	11	19	10	21	22	12	18	15	14	8	17	185	0
Chinese	***	***	***	***	***	***	***	***	***	***	***	***	40	0
Bangladeshi	***	***	***	***	***	***	***	***	***	***	***	***	40	0
Total	3601	3351	3453	3626	3572	3427	3314	3511	3668	3391	3772	3059	41745	100

Table 3: Royal Bolton ED: Total injury attendances by method of disposal and month, July 2011 to June 2012*

Disposal	Jul	Aug	Sep	Oct	Nov	Dec	Jan	Feb	Mar	Apr	May	Jun	Total	%
Referred/follow-up	1389	1280	1353	1570	1530	1415	1304	1386	1419	1235	1441	1149	16471	39
Discharged	1444	1408	1371	1309	1245	1172	1200	1294	1432	1365	1528	1197	15965	38
Admitted	506	409	501	498	546	609	594	586	570	530	562	466	6377	15
Other	262	254	228	249	251	231	216	245	247	261	241	247	2932	7
Total	3601	3351	3453	3626	3572	3427	3314	3511	3668	3391	3772	3059	41745	100

*Percentages may not add up to 100 due to rounding

Table 4: Royal Bolton ED: Total injury attendances by method of disposal and injury group (excluding other injury), July 2011 to June 2012*

Disposal	Assault		Bites and stings		Burns and scalds		DSH		Fall		RTC		Sports injury		Total	
	n	%	n	%	n	%	n	%	n	%	n	%	n	%	n	%
Referred/follow-up	528	35	343	40	390	47	162	33	1199	32	702	39	653	43	3977	37
Discharged	662	44	436	51	352	42	102	21	1314	35	925	52	751	49	4542	42
Admitted	74	5	23	3	19	2	127	26	859	23	75	4	82	5	1259	12
Other	248	16	60	7	74	9	94	19	406	11	86	5	46	3	1014	9
Total	1512	100	862	100	835	100	485	100	3778	100	1788	100	1532	100	10792	100

*Percentages may not add up to 100 due to rounding

Table 5: Royal Bolton ED: Total injury attendances by arrival mode and month, July 2011 to June 2012*

Arrival mode	Jul	Aug	Sep	Oct	Nov	Dec	Jan	Feb	Mar	Apr	May	Jun	Total	%
Foot	2760	2563	2587	2701	2658	2445	2381	2591	2725	2528	2807	2297	31043	74
Ambulance	833	782	860	918	899	976	925	915	932	857	957	754	10608	25
Other	8	6	6	7	15	6	8	5	11	6	8	8	94	0
Total	3601	3351	3453	3626	3572	3427	3314	3511	3668	3391	3772	3059	41745	100

*Percentages may not add up to 100 due to rounding

² Please note that all numbers less than five have been suppressed in line with patient confidentiality and if there is only one number <5 in a category then two numbers will be suppressed at the next level.

Table 6: Royal Bolton ED: Total injury attendances by location and injury group (excluding other injury), July 2011 to June 2012*

Incident location	Assault		Bites and stings		Burns and scalds		DSH		Fall		RTC		Sports injury		Total	
	n	%	n	%	n	%	n	%	n	%	n	%	n	%	n	%
Home	688	46	531	62	674	81	375	77	2730	72	531	30	504	33	6033	56
Other	428	28	248	29	114	14	77	16	775	21	593	33	455	30	2690	25
Public place	342	23	58	7	9	1	31	6	160	4	655	37	252	16	1507	14
Educational establishment	***	1	***	1	***	0	***	0	86	2	***	0	320	21	437	4
Work	33	2	19	2	38	5	***	0	***	1	***	0	***	0	<122	1
Not specified	***	0	***	0	***	0	***	0	***	0	***	0	***	0	***	0
Total	1512	100	862	100	835	100	485	100	3778	100	1788	100	1532	100	10792	100

*Percentages may not add up to 100 due to rounding.

Table 7: Royal Bolton ED: Total assault attendances by gender, arrival mode, location of incident and age group of attendance, July 2011 to June 2012*

	Assault attendees		All injury attendees (n=41,745)
	n	%	%
Gender			
Male	1085	72	53
Female	427	28	47
Arrival mode	N	%	%
Ambulance	691	46	25
Foot	811	54	74
Other	10	0	0
Location	n	%	%
Not specified	***	0	0
Home	688	46	67
Public place	342	23	7
Other	428	28	21
Work	33	2	2
Educational establishment	***	1	3
Age group	n	%	%
0 - 4	***	0	9
5 - 19	331	22	18
20 - 34	717	47	25
35 - 49	346	23	18
50 - 64	91	6	12
65 plus	***	2	17

*Percentages may not add up to 100 due to rounding.

Author: Ian Warren, Published: August 2012

For further information please contact: Val Upton, Centre for Public Health, Research Directorate, Liverpool John Moores University, 2nd Floor, Henry Cotton Building, 15-21 Webster Street, Liverpool, L3 2ET, Tel: 0151 231 4513 or Email: i.j.warren@ljmu.ac.uk

Website: www.tig.info (data requests should be made through the website)