



# TIIG

INJURY SURVEILLANCE IN THE NORTH WEST OF ENGLAND

## Injury attendances to Royal Bolton Hospital Emergency Department

### April 2013 to March 2014

This report summarises recorded injury attendances to Royal Bolton Emergency Department (ED) between April 2013 and March 2014.

Between April 2013 and March 2014 there were 45,919 injury attendances to Royal Bolton ED. Males accounted for over half (52%) of these attendances. The month with the highest attendances was July (n=4,320) with February having the lowest (n=2,796) (**Figure 1**). Of the specified injury groups, falls (8%) accounted for the highest proportion followed by road traffic collision (RTC) and sports injury (both 3%) (**Table 1**).

The highest proportion of attendances was for persons aged 20 to 34 (24%); Ages 65+, 35-49 and 5-19 each represented 18% of attendees. (**Figure 2**). Almost half (47%) of fall attendees were aged 65 or over while over a quarter (26%) of burns and scalds injuries were sustained by 0 to 4 year olds. Four in ten (40%) of RTC attendees were aged 20-34 (**Figure 3**).

**Table 2** shows the ethnicity of attendees to Royal Bolton ED. Over seven in ten (72%) were white.

The disposal of a patient can give an indication of the severity of the injuries sustained. Four in ten (40%) were discharged and 18% were admitted (**Table 3**). Over half (53%) of burns and scalds attendees were referred and 39% were discharged, while over one-

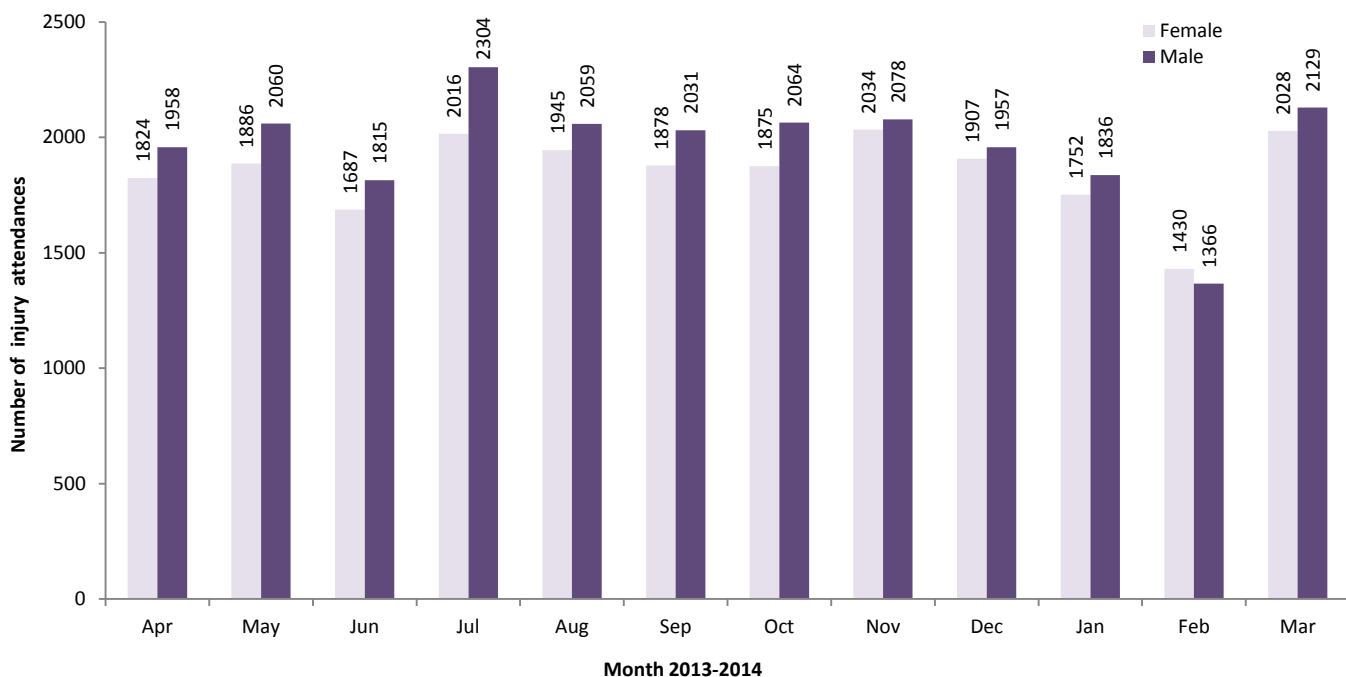
third (34%) of deliberate self-harm (DSH) attendees were admitted. Half (50%) of assault attendees were discharged. A quarter (25%) of fall attendees were admitted (**Table 4**).

**Table 5** shows the arrival methods of attendances at Royal Bolton ED. Three-quarters (75%) of attendees arrived on foot, whilst a quarter (25%) arrived by ambulance.

**Table 6** shows the location of the incident of the main injury groups (excluding other injury). Over six in ten (61%) injuries occurred in the home. Almost four-fifths (79%) of burns and scalds occurred in the home. One quarter (25%) of sports injuries occurred in an educational establishment.

**Table 7** presents data for assault attendees to Royal Bolton ED. Males represent almost seven in ten (69%) of assault attendances, whilst almost half (46%) of assault attendees were aged 20 to 34. Almost half (47%) of assault attendees arrived by ambulance.

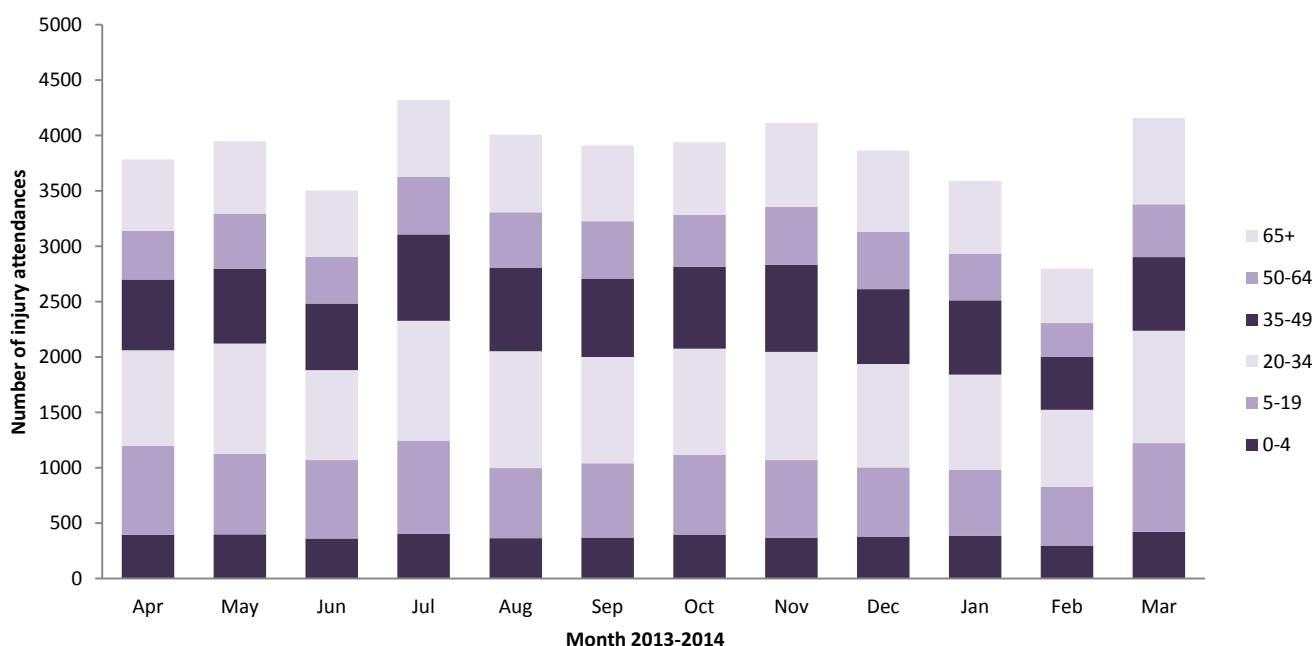
**Figure 1: Royal Bolton ED: Total injury attendances by gender and month, April 2013 to March 2014**



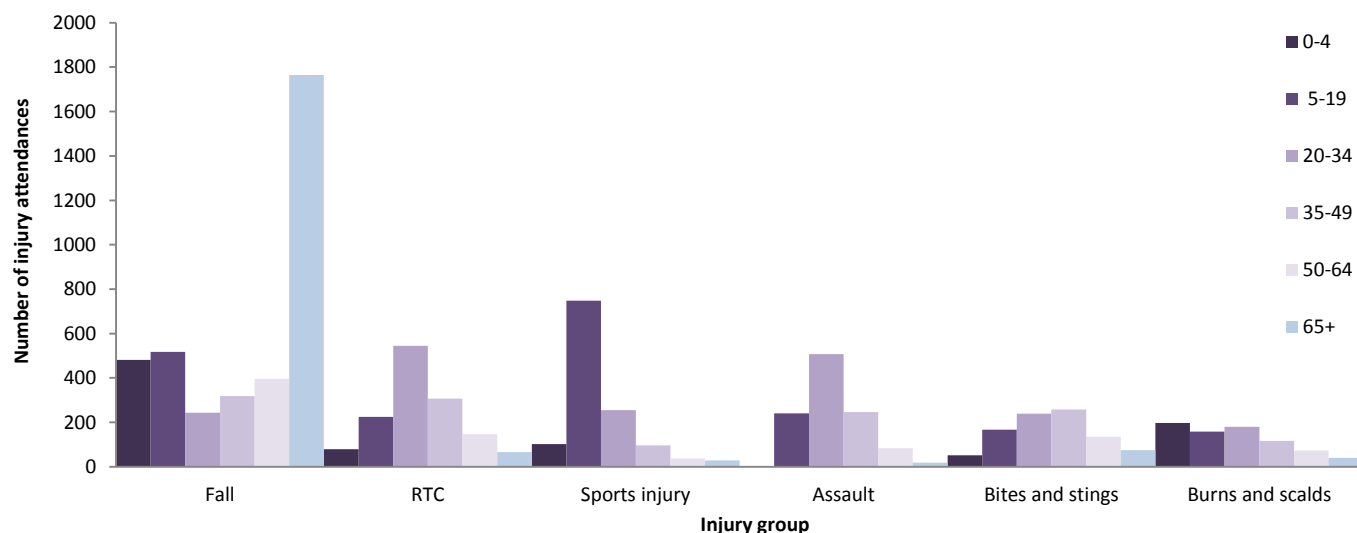
**Table 1: Royal Bolton ED: Total injury attendances by injury group and month, April 2013 to March 2014**

Injury group	Apr	May	Jun	Jul	Aug	Sep	Oct	Nov	Dec	Jan	Feb	Mar	Total	%
Other injury	2982	3126	2613	3354	3154	3096	3209	3348	3171	2871	2145	3221	36290	79
Fall	307	335	350	362	328	293	260	274	287	279	269	377	3721	8
RTC	120	127	117	102	115	116	101	125	105	113	98	130	1369	3
Sports injury	138	99	87	88	52	109	132	114	77	117	97	160	1270	3
Assault	79	89	105	115	119	94	99	87	91	72	58	91	1099	2
Bites and stings	66	76	104	166	106	108	62	47	48	41	37	66	927	2
Burns and scalds	54	62	72	86	74	67	51	68	46	57	62	68	767	2
DSH	36	32	54	47	56	26	25	49	39	38	30	44	476	1
<b>Total</b>	<b>3782</b>	<b>3946</b>	<b>3502</b>	<b>4320</b>	<b>4004</b>	<b>3909</b>	<b>3939</b>	<b>4112</b>	<b>3864</b>	<b>3588</b>	<b>2796</b>	<b>4157</b>	<b>45919</b>	<b>100</b>

**Figure 2: Royal Bolton ED: Total injury attendances by age group and month, April 2013 to March 2014**



**Figure 3: Royal Bolton ED: Total injury attendances by age group and injury group (excluding other injury), April 2013 to March 2014**



**Table 2: Royal Bolton ED: Total injury attendances by ethnicity and month, April 2013 to March 2014<sup>1,2</sup>**

Ethnicity	Apr	May	Jun	Jul	Aug	Sep	Oct	Nov	Dec	Jan	Feb	Mar	Total	%
White	2719	2842	2484	3092	2881	2785	2761	2999	2760	2568	1967	2974	32832	72
Not stated	405	401	382	447	410	381	401	420	367	377	295	427	4713	10
Not known	308	333	314	392	339	364	385	329	371	313	272	386	4106	9
Pakistani	116	107	124	136	126	118	147	131	118	114	99	123	1459	3
Indian	116	131	103	126	115	120	98	116	111	104	74	118	1332	3
Black	37	40	26	36	41	45	38	29	40	24	21	31	408	1
Mixed	30	28	27	31	34	44	35	34	35	29	28	36	391	1
Any other ethnic group	28	35	15	28	24	28	36	28	29	23	15	30	319	1
Any other Asian background	13	24	22	25	23	16	30	16	23	25	18	19	254	1
Bangladeshi	5	***	5	<10	5	***	***	5	<10	<10	***	7	56	0
Chinese	5	***	0	***	6	<10	<10	5	***	***	***	6	49	0
<b>Total</b>	<b>3782</b>	<b>3946</b>	<b>3502</b>	<b>4320</b>	<b>4004</b>	<b>3909</b>	<b>3939</b>	<b>4112</b>	<b>3864</b>	<b>3588</b>	<b>2796</b>	<b>4157</b>	<b>45919</b>	<b>100</b>

**Table 3: Royal Bolton ED: Total injury attendances by method of disposal and month, April 2013 to March 2014**

Disposal	Apr	May	Jun	Jul	Aug	Sep	Oct	Nov	Dec	Jan	Feb	Mar	Total	%
Discharged	1548	1554	1420	1786	1604	1591	1590	1541	1503	1500	1223	1683	18543	40
Referral/follow-up	1379	1548	1326	1562	1469	1350	1433	1558	1339	1202	921	1481	16568	36
Admitted	597	634	557	664	685	719	721	801	780	713	534	784	8189	18
Other	258	210	199	308	246	249	195	212	242	173	118	209	2619	6
<b>Total</b>	<b>3782</b>	<b>3946</b>	<b>3502</b>	<b>4320</b>	<b>4004</b>	<b>3909</b>	<b>3939</b>	<b>4112</b>	<b>3864</b>	<b>3588</b>	<b>2796</b>	<b>4157</b>	<b>45919</b>	<b>100</b>

**Table 4: Royal Bolton ED: Total injury attendances by method of disposal and injury group (excluding other injury), April 2013 to March 2014<sup>1</sup>**

Disposal	Assault		Bites and stings		Burns and scalds		DSH		Fall		RTC		Sports injury		Total	
	n	%	n	%	n	%	n	%	n	%	n	%	n	%	n	%
Discharged	546	50	522	56	296	39	94	20	1367	37	790	58	650	51	4265	44
Referral/follow-up	326	30	333	36	407	53	140	29	1074	29	495	36	521	41	3296	34
Admitted	54	5	23	2	6	1	161	34	945	25	47	3	65	5	1301	14
Other	173	16	49	5	58	8	81	17	335	9	37	3	34	3	767	8
<b>Total</b>	<b>1099</b>	<b>100</b>	<b>927</b>	<b>100</b>	<b>767</b>	<b>100</b>	<b>476</b>	<b>100</b>	<b>3721</b>	<b>100</b>	<b>1369</b>	<b>100</b>	<b>1270</b>	<b>100</b>	<b>9629</b>	<b>100</b>

**Table 5: Royal Bolton ED: Total injury attendances by arrival mode and month, April 2013 to March 2014<sup>2</sup>**

Arrival mode	Apr	May	Jun	Jul	Aug	Sep	Oct	Nov	Dec	Jan	Feb	Mar	Total	%
Foot	2875	2986	2594	3289	2938	2940	2923	3031	2799	2635	2079	3102	34191	75
Ambulance	890	952	900	1015	1056	957	1004	1067	1053	944	<715	<1055	11600	25
Other	17	8	8	16	10	12	12	14	12	9	<10	***	128	0
<b>Total</b>	<b>3782</b>	<b>3946</b>	<b>3502</b>	<b>4320</b>	<b>4004</b>	<b>3909</b>	<b>3939</b>	<b>4112</b>	<b>3864</b>	<b>3588</b>	<b>2796</b>	<b>4157</b>	<b>45919</b>	<b>100</b>

**Table 6: Royal Bolton ED: Total injury attendances by location and injury group (excluding other injury), April 2013 to March 2014<sup>1,2</sup>**

Incident location	Assault		Bites and stings		Burns and scalds		DSH		Fall		RTC		Sports injury		Total	
	n	%	n	%	n	%	n	%	n	%	n	%	n	%	n	%
Home	658	60	583	63	606	79	389	82	2615	70	483	35	533	42	5867	61
Other	272	25	284	31	118	15	58	12	865	23	414	30	123	10	2134	22
Public place	138	13	44	5	8	1	24	5	96	3	458	33	166	13	934	10
Educational establishment	10	1	***	0	***	1	5	1	114	3	7	1	314	25	458	5
Leisure facility	***	0	***	0	***	0	0	0	12	0	***	0	132	10	153	2
Work	18	2	11	1	28	4	0	0	<20	0	***	0	***	0	77	1
Not specified	***	0	0	0	0	0	0	0	***	0	0	0	***	0	6	0
<b>Total</b>	<b>1099</b>	<b>100</b>	<b>927</b>	<b>100</b>	<b>767</b>	<b>100</b>	<b>476</b>	<b>100</b>	<b>3721</b>	<b>100</b>	<b>1369</b>	<b>100</b>	<b>1270</b>	<b>100</b>	<b>9629</b>	<b>100</b>

**Table 7: Royal Bolton ED: Total assault attendances by gender, arrival mode, location of incident and age group of attendance, April 2013 to March 2014<sup>1,2</sup>**

	Assault attendees (n=1,099)		All injury attendees (n=45,919)	
	N	%	N	%
<b>Gender</b>				
Male	753	69		48
Female	346	31		52
<b>Arrival mode</b>				
Ambulance	516	47		25
Foot	578	53		74
Other	5	0		0
<b>Age group</b>				
0 - 4	***	0		10
5 - 19	240	22		18
20 - 34	507	46		24
35 - 49	247	22		18
50 - 64	84	8		12
65 plus	<20	2		18

Published June 2014

Stuart Cole (TIIG researcher)

Centre for Public Health, Faculty of Education, Health and Community, Liverpool John Moores University

2<sup>nd</sup> Floor, Henry Cotton Campus, 15-21 Webster Street, Liverpool, L3 2ET

Contact: Jennifer Brizell, Tel: 0151 231 4500 Email: [j.s.brizell@ljmu.ac.uk](mailto:j.s.brizell@ljmu.ac.uk)

Website: [www.tiig.info](http://www.tiig.info)

Twitter: [@TIIG\\_CPH](https://twitter.com/TIIG_CPH)

<sup>1</sup> Percentages may not add up to 100% due to rounding

<sup>2</sup> Please note that all numbers less than five have been suppressed in line with patient confidentiality and if there is only one number <5 in a category then two numbers will be suppressed at the next level.