

Injury attendances to Royal Oldham Hospital Emergency Department

October 2010 to September 2011

This report summarises recorded injury attendances to Royal Oldham Hospital Emergency Department (ED) between October 2010 and September 2011.

Between October 2010 and September 2011 there were 32,399 injury attendances to Royal Oldham Hospital ED. Males accounted for over half (55%) of all attendances. The month with the highest attendances was July (n=3,280) with December (n=2,247) having the lowest attendances for injury (**Figure 1**). The majority (63%) of attendances were recorded as other injury. Of the specified injury groups falls (20%) accounted for the highest proportion followed by road traffic collisions (RTCs) (7%) and assault (4%) (**Table 1**).

For all injuries the highest proportions of attendances were for persons aged 5 to 19 (27%) and 20 to 34 years (23%) (**Figure 2**). Nearly two-fifths (39%) of fall attendees were aged 65 or over (**Figure 3**).

Table 2 shows the location of the incident of injury attendances. Over two-fifths (44%) of injuries occurred in the home. Three-quarters (75%) of deliberate self-harm (DSH) injuries and over a half (51%) of falls occurred in the home.

Table 3 shows the ethnicity of injury attendees to Royal Oldham Hospital ED. Three-quarters (75%) were white, 9% were Pakistani and 5% were Bangladeshi.

The disposal of a patient can give an indication of the severity of the injuries sustained. Nearly two-thirds (61%) of attendees were discharged, over a quarter (26%) had a referral/follow-up and 11% were admitted (**Table 4**). Four in five (80%) of RTC attendees were discharged. Almost six in ten (58%) of burns and scalds attendees had a referral/follow-up (**Table 5**).

Table 6 shows the arrival methods of injury attendances at Royal Oldham Hospital ED. Nearly seven in ten (68%) arrived by private transport while a fifth (20%) arrived by ambulance.

Table 7 presents data for assault attendances to Royal Oldham ED. Nearly three-quarters (74%) were male, over two-fifths (45%) occurred in a public place, nearly a half (47%) of attendees were aged 20 to 34, and over a quarter (27%) presented at the ED on weekend nights.

Figure 1: Royal Oldham Hospital ED: Total injury attendances by gender and month, October 2010 to September 2011

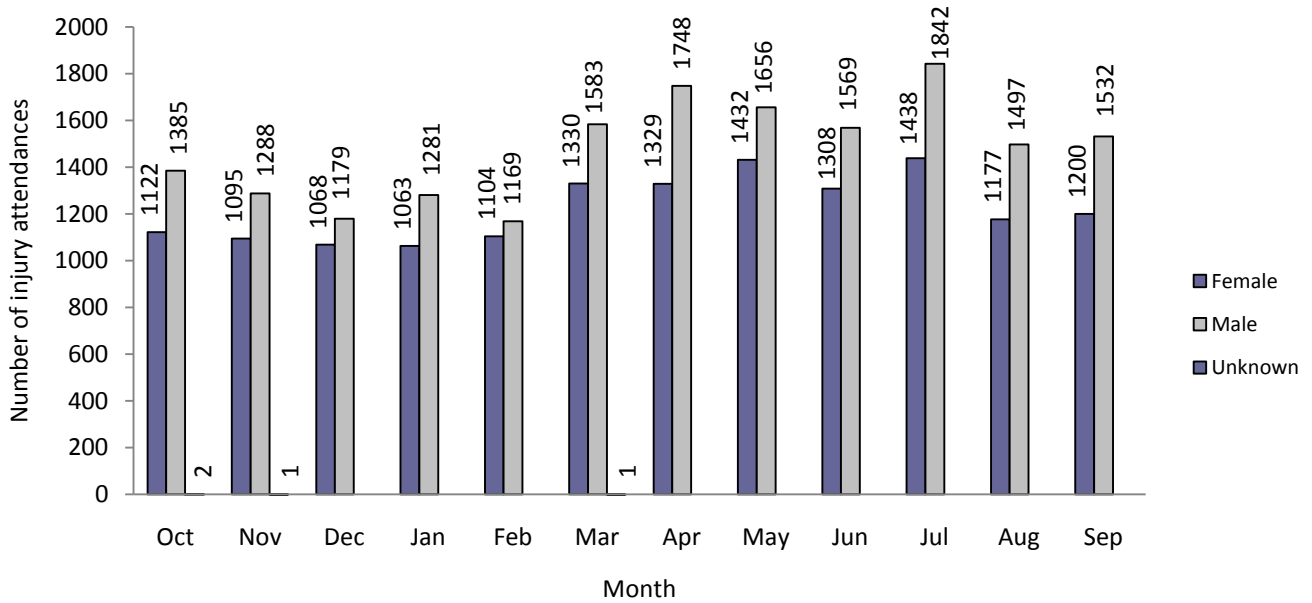
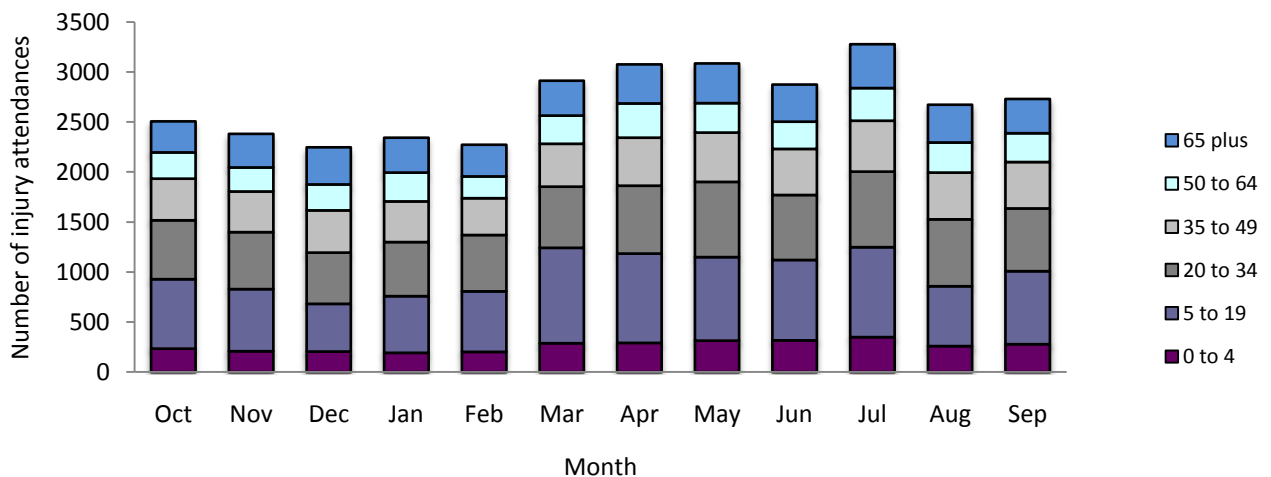


Table 1: Royal Oldham Hospital ED: Total injury attendances by injury group and month, October 2010 to September 2011¹

Injury group	Oct	Nov	Dec	Jan	Feb	Mar	Apr	May	Jun	Jul	Aug	Sep	Total	%
Other injury	1635	1552	1388	1445	1480	1929	2047	1964	1780	2059	1586	1605	20470	63
Fall	440	401	511	480	448	564	544	622	648	700	612	620	6590	20
RTC	210	197	147	182	133	177	174	221	215	196	172	218	2242	7
Assault	116	105	101	111	106	107	144	137	94	143	137	123	1424	4
Burns and scalds	39	61	40	59	37	48	68	54	60	75	56	64	661	2
Bites and stings	44	32	32	31	31	45	55	50	56	63	69	71	579	2
DSH	25	36	28	36	38	44	45	40	24	44	42	31	433	1
Total	2509	2384	2247	2344	2273	2914	3077	3088	2877	3280	2674	2732	32399	100

¹Percentages may not add to 100 due to rounding.

Figure 2: Royal Oldham Hospital ED: Total injury attendances by age group and month, October 2010 to September 2011



¹ Due to low numbers drowning/immersion (n<5), firework (n=11) and electrical accident (n=47) were included in other injury.

Figure 3: Royal Oldham Hospital ED: Total injury attendances by age group and injury group (excluding other injury), October 2010 to September 2011

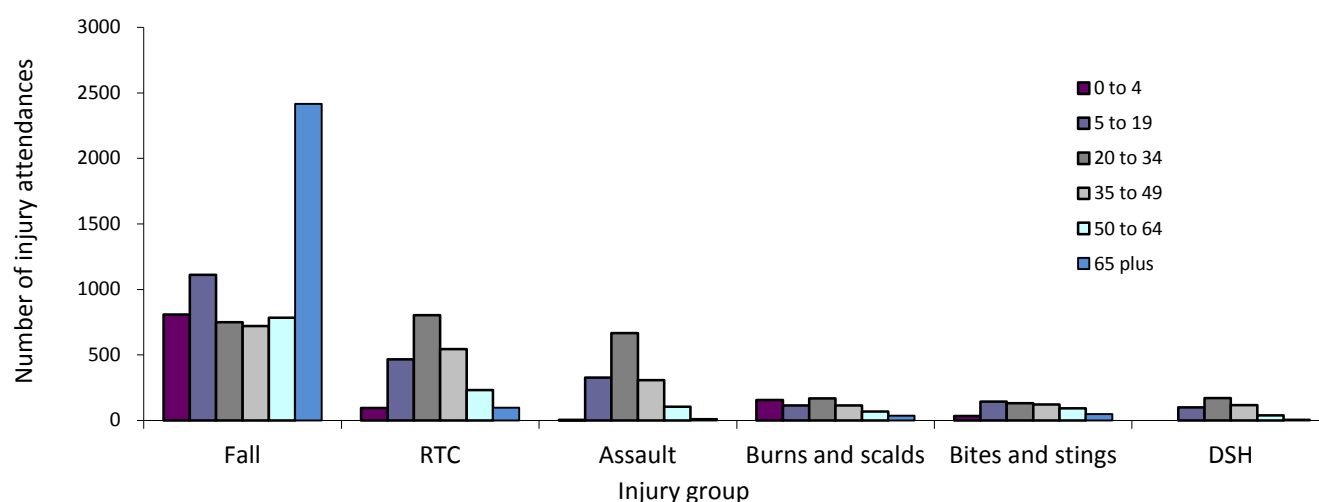


Table 2: Royal Oldham Hospital ED: Total injury attendances by location of incident and month, October 2010 to September 2011^{2*}

Location	Assault		Bites and stings		Burns and scalds		DSH		Fall		Other injury		RTC		Total	
	n	%	n	%	n	%	n	%	n	%	n	%	n	%	n	%
Home	339	24	244	42	346	52	326	75	3391	51	9409	46	68	3	14123	44
Other	363	25	115	20	46	7	63	15	569	9	4166	20	2065	92	7387	23
Public place	644	45	145	25	19	3	31	7	1526	23	3280	16	54	2	5699	18
Work	32	2	***	***	88	13	***	***	160	2	1635	8	***	***	1962	6
Educational establishment	26	2	***	***	5	1	***	***	243	4	1512	7	***	***	1792	6
Unknown	20	1	39	7	157	24	11	3	701	11	468	2	40	2	1436	4
Total	1424	100	579	100	661	100	433	100	6590	100	20470	100	2242	100	32399	100

*Percentages may not add to 100 due to rounding.

Table 3: Royal Oldham Hospital ED: Total injury attendances by ethnicity and month, October 2010 to September 2011³

Ethnicity	Oct	Nov	Dec	Jan	Feb	Mar	Apr	May	Jun	Jul	Aug	Sep	Total	%
White	1896	1774	1705	1803	1725	2144	2317	2348	2102	2473	2068	2075	24430	75
Pakistani	202	211	190	194	192	250	270	253	320	304	214	220	2820	9
Not known	229	202	185	170	173	288	249	241	212	254	202	175	2580	8
Bangladeshi	113	124	111	110	113	151	155	150	160	158	110	166	1621	5
Mixed	17	16	12	13	20	23	31	34	23	30	18	23	260	1
Any other ethnic group	26	14	14	14	19	20	17	29	19	27	16	21	236	1
Black	14	18	13	22	10	14	19	9	17	16	26	26	204	1
Other Asian background	***	13	***	6	***	13	***	12	***	8	11	13	111	0
Indian	6	***	9	7	10	***	10	***	11	***	***	12	105	0
Chinese	***	***	***	5	***	***	***	***	***	***	***	***	32	0
Total	2509	2384	2247	2344	2273	2914	3077	3088	2877	3280	2674	2732	32399	100

² Please note that all numbers less than five have been suppressed in line with patient confidentiality and if there is only one number <5 in a category then two numbers will be suppressed at the next level.

³ White = Irish, British, other white background; Mixed = white and black, white and Asian, mixed any other; Other = any other ethnic group, Any other Asian background; Black = African, Caribbean, other black.

Table 4: Royal Oldham Hospital ED: Total injury attendances by method of disposal and month, October 2010 to September 2011⁴

Disposal	Oct	Nov	Dec	Jan	Feb	Mar	Apr	May	Jun	Jul	Aug	Sep	Total	%
Discharged	1573	1535	1342	1440	1401	1777	1914	1854	1777	2007	1527	1735	19882	61
Referral/follow-up	656	586	596	582	587	828	810	834	747	884	741	640	8491	26
Admitted	233	224	244	276	244	261	302	347	301	330	331	312	3405	11
Other	47	39	65	46	41	48	51	53	52	59	75	45	621	2
Total	2509	2384	2247	2344	2273	2914	3077	3088	2877	3280	2674	2732	32399	100

Table 5: Royal Oldham Hospital ED: Total injury attendances by method of disposal and injury group, October 2010 to September 2011

Disposal	Assault		Bites and stings		Burns and scalds		DSH		Fall		Other injury		RTC		Total	
	n	%	n	%	n	%	n	%	n	%	n	%	n	%	n	%
Discharged	679	48	366	63	222	34	211	49	3221	49	13399	65	1784	80	19882	61
Referral/follow-up	276	19	181	31	381	58	60	14	1509	23	5832	28	252	11	8491	26
Admitted	265	19	***	***	***	***	94	22	1674	25	1167	6	136	6	3405	11
Other	204	14	***	***	***	***	68	16	186	3	72	0	70	3	621	2
Total	1424	100	579	100	661	100	433	100	6590	100	20470	100	2242	100	32399	100

*Percentages may not add to 100 due to rounding.

Table 6: Royal Oldham Hospital ED: Total injury attendances by mode of arrival and month, October 2010 to September 2011

Arrival mode	Oct	Nov	Dec	Jan	Feb	Mar	Apr	May	Jun	Jul	Aug	Sep	Total	%
Private transport	1768	1621	1509	1560	1568	2079	2061	2102	1939	2200	1783	1813	22003	68
Ambulance	478	488	490	506	486	540	607	527	516	625	562	522	6347	20
Taxi	83	73	101	108	74	127	131	137	132	141	93	130	1330	4
Unknown	81	77	36	64	41	44	134	206	138	163	122	126	1232	4
Foot	20	39	27	40	26	55	51	48	49	66	39	61	521	2
Public transport	42	35	30	22	37	38	51	31	51	45	31	44	457	1
Work transport	17	20	22	18	12	18	16	11	30	20	19	22	225	1
Police	***	25	25	18	23	***	***	20	14	11	16	7	210	1
Other	***	6	7	8	6	***	***	6	8	9	9	7	74	0
Total	2509	2384	2247	2344	2273	2914	3077	3088	2877	3280	2674	2732	32399	100

*Percentages may not add to 100 due to rounding.

⁴ Admitted=admitted to ED bed/became a lodged patient of the same health care provider; Discharged=discharged - did not require any follow up treatment; Referral/follow-up =discharged - follow up treatment to be provided by GP, referred to ED clinic, referred to fracture clinic, referred to other out-patient clinic, transferred to other health care provider, referred to other health care professional; Other=died in department, left department before being treated, left department having refused treatment, other.

Table 7: North Manchester General Hospital ED: Assault attendances by gender, incident location, age group and day/time of attendance, October 2010 to September 2011*

	Assaults (n=1,424)	All injuries (n=32,399)
Sex	%	%
Female	26	45
Male	74	55
Location		
Public place	45	18
Home	24	44
Other	25	23
Work	2	6
Educational establishment	2	6
Not recorded	1	4
Age group		
0 - 4	0	10
5 - 19	23	27
20 - 34	47	23
35 - 49	22	16
50 - 64	7	10
65 plus	1	13
Day & time		
Weekend nights**	27	11
Weekend days	23	21
Weekdays	51	68

*Percentages may not add to 100 due to rounding.

**8pm to 3.59am, Friday evening/Saturday morning, Saturday evening/Sunday morning, Sunday evening/Monday morning.

Author: Ian Warren, published December 2011

For further information please contact: Centre for Public Health, Liverpool John Moores University, 2nd Floor, Henry Cotton Building, 15-21 Webster Street, Liverpool, L3 2ET, Tel: 0151 231 4513 or Email: i.j.warren@ljmu.ac.uk Website: www.tiig.info