



TIIG

INJURY SURVEILLANCE IN THE NORTH WEST OF ENGLAND

Injury attendances to Royal Oldham Hospital Emergency Department

April 2012 to March 2013

This report summarises recorded injury attendances to Royal Oldham Hospital Emergency Department (ED) between April 2012 and March 2013.

Between April 2012 and March 2013 there were 34,658 injury attendances to Royal Oldham Hospital ED. Males accounted for over half (54%) of all attendances. The month with the highest attendances was June (n=3,156) with February (n=2,434) having the lowest attendances for injury (**Figure 1**). The majority (61%) of attendances were recorded as other injury. Of the specified injury groups, falls (22%) accounted for the highest proportion followed by road traffic collisions (RTC) (8%) and assault (5%) (**Table 1**).

For all injuries, the highest proportions of attendances were for persons aged 5 to 19 (25%) and 20 to 34 years (23%) (**Figure 2**). Over four in ten (41%) of fall attendees were aged 65 or over (**Figure 3**).

Table 2 shows the location of the incident of injury attendances. Almost half (48%) of injuries occurred in the home. Almost eight in ten (79%) of deliberate self-harm (DSH) injuries, and over half (56%) of falls, occurred in the home.

Table 3 shows the ethnicity of injury attendees to Royal Oldham Hospital ED. Over three-quarters (76%)

were white, 9% were Pakistani and 4% were Bangladeshi.

The disposal of a patient can give an indication of the severity of the injuries sustained. Almost six in ten (59%) attendees were discharged, over a quarter (27%) had a referral/follow-up and 12% were admitted (**Table 4**). Four in five (80%) RTC attendees were discharged. Over half (54%) burns and scalds attendees had a referral/follow-up (**Table 5**).

Table 6 shows the arrival methods of injury attendances at Royal Oldham Hospital ED. Almost two-thirds (65%) arrived by private transport whilst over a fifth (22%) arrived by ambulance.

Table 7 presents data for assault attendances to Royal Oldham ED. Over seven in ten (72%) were male and almost half (46%) of attendees were aged 20 to 34 years.

Figure 1: Royal Oldham Hospital ED: Total injury attendances by gender and month, April 2012 to March 2013¹

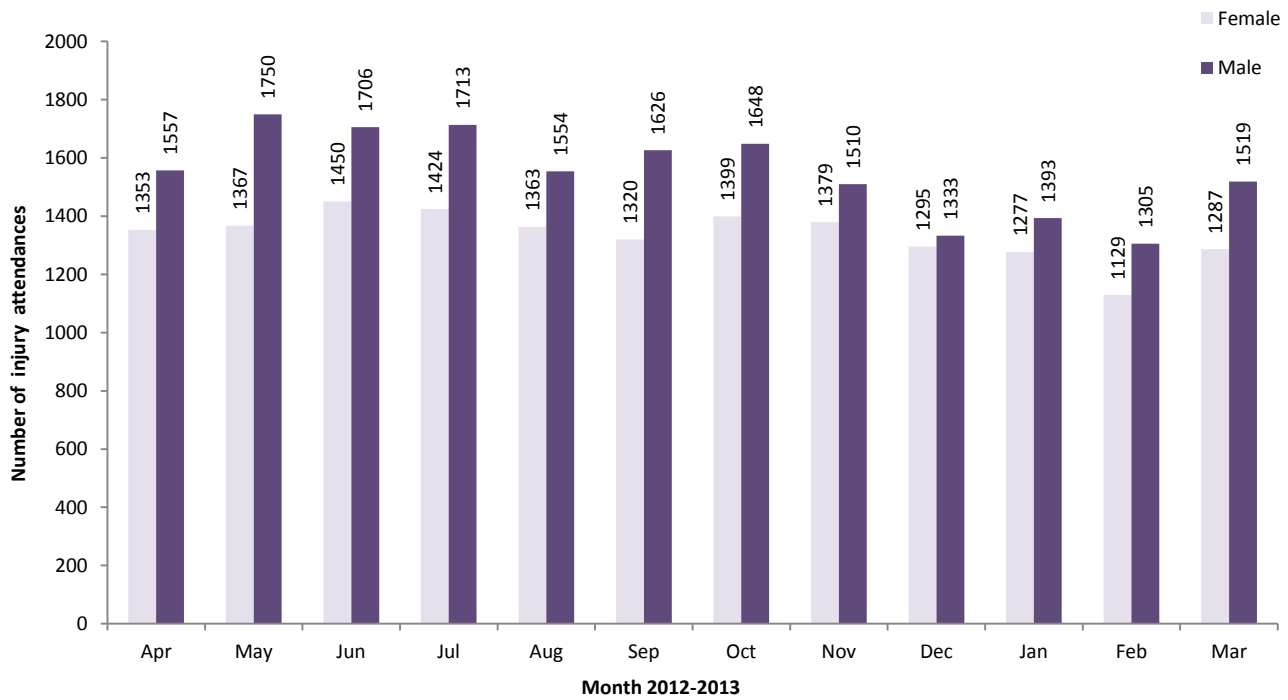
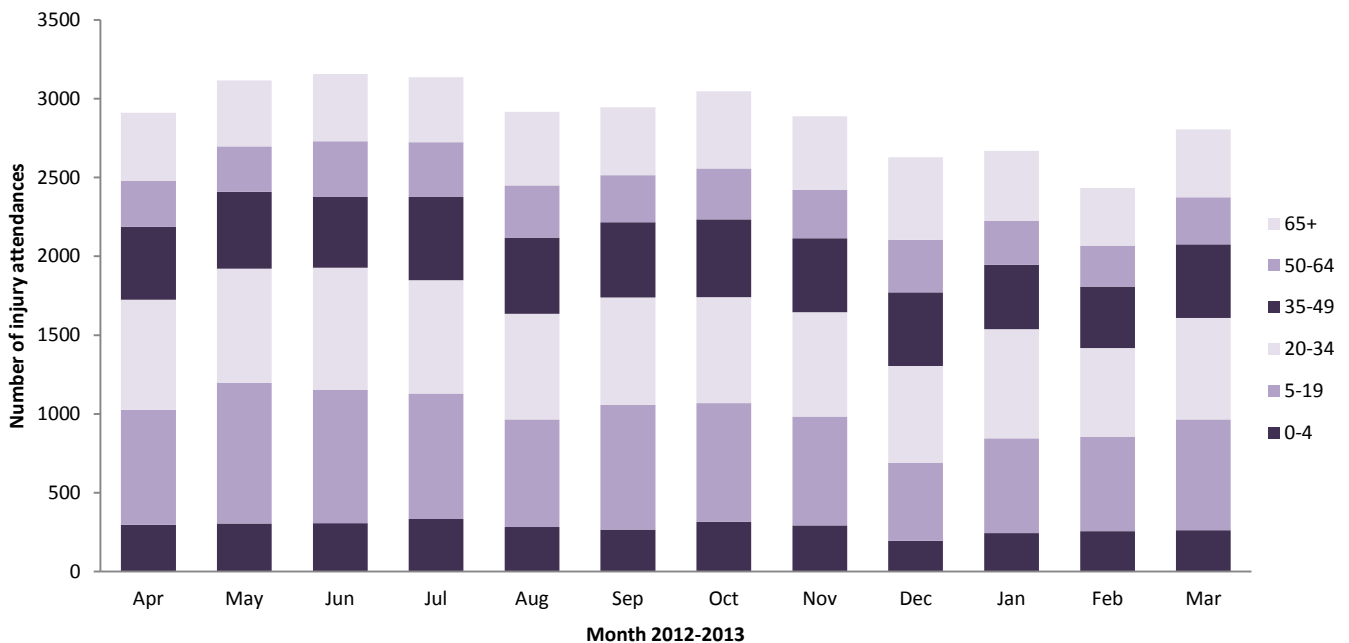


Table 1: Royal Oldham Hospital ED: Total injury attendances by injury group and month, April 2012 to March 2013

Injury group	Apr	May	Jun	Jul	Aug	Sep	Oct	Nov	Dec	Jan	Feb	Mar	Total	%
Other injury	1833	2001	2036	1984	1734	1825	1849	1781	1403	1529	1422	1674	21071	61
Fall	571	618	606	600	641	614	692	577	735	698	565	675	7592	22
RTC	218	189	226	245	186	234	225	259	204	206	209	225	2626	8
Assault	156	139	155	146	166	143	146	127	174	113	128	131	1724	5
Burns and scalds	67	84	47	74	67	52	70	68	48	70	46	32	725	2
Bites and stings	40	51	56	59	90	49	37	32	32	30	27	37	540	2
DSH	26	35	30	29	33	29	28	45	32	24	37	32	380	1
Total	2911	3117	3156	3137	2917	2946	3047	2889	2628	2670	2434	2806	34658	100

Figure 2: Royal Oldham Hospital ED: Total injury attendances by age group and month, April 2012 to March 2013



¹ There was one attendance where gender was unknown

Figure 3: Royal Oldham Hospital ED: Total injury attendances by age group and injury group (excluding other injury), April 2012 to March 2013

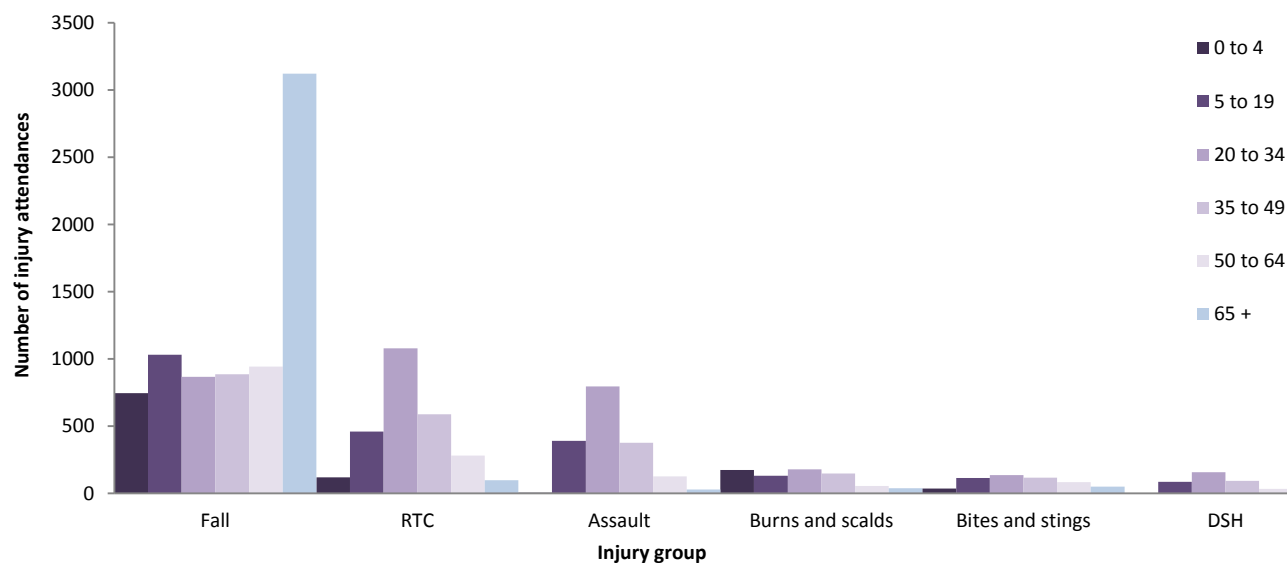


Table 2: Royal Oldham Hospital ED: Total injury attendances by incident location and injury group, April 2012 to March 2013²

Incident location	Assault		Bites and stings		Burns and scalds		DSH		Fall		RTC		Other		Total	
	n	%	n	%	n	%	n	%	n	%	n	%	n	%	n	%
Home	453	26	251	46	383	53	302	79	4216	56	163	6	11039	52	16807	48
Other	347	20	68	13	37	5	32	8	500	7	2142	82	3510	17	6636	19
Public place	796	46	125	23	22	3	31	8	1653	22	278	11	2776	13	5681	16
Work	54	3	35	6	82	11	***	1	185	2	<15	0	1636	8	2004	6
Educational establishment	44	3	6	1	9	1	***	1	226	3	***	0	1568	7	1857	5
Not recorded	30	2	55	10	192	26	10	3	812	11	32	1	542	3	1673	5
Total	1724	100	540	100	725	100	380	100	7592	100	2626	100	21071	100	34658	100

Table 3: Royal Oldham Hospital ED: Total injury attendances by ethnicity and month, April 2012 to March 2013^{2,3}

Ethnicity	Apr	May	Jun	Jul	Aug	Sep	Oct	Nov	Dec	Jan	Feb	Mar	Total	%	
White	2188	2312	2348	2388	2281	2257	2359	2204	1977	2035	1835	2044	26228	76	
Pakistani	276	304	329	276	202	271	266	251	256	231	223	284	3169	9	
Not known	206	210	240	224	221	189	191	209	154	168	154	204	2370	7	
Bangladeshi	10	18	7	158	125	135	133	140	137	136	129	166	1294	4	
Any other ethnic group	141	183	156	16	20	22	27	19	22	23	33	27	689	2	
Mixed	19	21	19	29	22	32	25	35	26	27	28	31	314	1	
Black	26	29	24	26	22	19	22	13	28	21	15	20	265	1	
Any other Asian background	26	29	19	7	8	7	11	9	7	14	6	17	160	0	
Indian	15	7	9	<15	10	9	11	<10	<15	9	6	<15	118	0	
Chinese	***	***	***	***	***	***	***	***	***	***	***	***	0	32	0
Not recorded	***	***	***	0	***	***	***	0	5	***	***	***	19	0	
Total	2911	3117	3156	3137	2917	2946	3047	2889	2628	2670	2434	2806	34658	100	

Table 4: Royal Oldham Hospital ED: Total injury attendances by method of disposal and month, April 2012 to March 2013⁴

Disposal	Apr	May	Jun	Jul	Aug	Sep	Oct	Nov	Dec	Jan	Feb	Mar	Total	%
Discharged	1655	1921	1912	1963	1731	1692	1752	1756	1490	1515	1490	1742	20619	59
Referral/follow-up	841	801	841	770	746	831	888	731	708	768	590	675	9190	27
Admitted	353	338	326	348	368	353	354	331	342	342	317	342	4114	12
Other	62	57	77	56	72	70	53	71	88	45	37	47	735	2
Total	2911	3117	3156	3137	2917	2946	3047	2889	2628	2670	2434	2806	34658	100

² Please note that all numbers less than five have been suppressed in line with patient confidentiality and if there is only one number <5 in a category then two numbers will be suppressed at the next level.

³ White = Irish, British, other white background; Mixed = white and black, white and Asian, mixed any other; Black = African, Caribbean, other black.

⁴ Admitted=admitted to ED bed/became a lodged patient of the same health care provider; Discharged=discharged - did not require any follow up treatment; Referral/follow-up =discharged - follow up treatment to be provided by GP, referred to ED clinic, referred to fracture clinic, referred to other out-patient clinic, transferred to other health care provider, referred to other health care professional; Other=died in department, left department before being treated, left department having refused treatment, other.

Table 5: Royal Oldham Hospital ED: Total injury attendances by method of disposal and injury group, April 2012 to March 2013

Disposal	Assault		Bites and stings		Burns and scalds		DSH		Fall		Other injury		RTC		Total	
	n	%	n	%	n	%	n	%	n	%	n	%	n	%	n	%
Discharged	810	47	381	71	232	32	177	47	3620	48	13305	63	2094	80	20619	59
Referral/follow-up	324	19	141	26	393	54	51	13	1575	21	6378	30	328	12	9190	27
Admitted	326	19	18	3	67	9	82	22	2133	28	1338	6	150	6	4114	12
Other	264	15	0	0	33	5	70	18	264	3	50	0	54	2	735	2
Total	1724	100	540	100	725	100	380	100	7592	100	21071	100	2626	100	34658	100

Table 6: Royal Oldham Hospital ED: Total injury attendances by mode of arrival and month, April 2012 to March 2013

Arrival mode	Apr	May	Jun	Jul	Aug	Sep	Oct	Nov	Dec	Jan	Feb	Mar	Total	%
Private transport	1896	2093	2097	2018	1816	1937	1999	1872	1640	1690	1546	1851	22455	65
Ambulance	617	623	660	669	666	653	635	685	690	609	546	579	7632	22
Taxi	145	136	164	173	160	140	143	134	125	150	142	150	1762	5
Other	98	99	98	93	111	65	91	63	55	64	68	55	960	3
Foot	69	54	60	83	75	52	50	53	48	54	47	47	692	2
Public transport	40	65	52	59	49	67	74	38	38	61	57	91	691	2
Work transport	23	21	10	28	19	15	33	19	14	27	14	19	242	1
Police	23	26	15	14	21	17	22	25	18	15	14	14	224	1
Total	2911	3117	3156	3137	2917	2946	3047	2889	2628	2670	2434	2806	34658	100

Table 7: Royal Oldham Hospital ED: Total injury and assault attendances by gender, incident location, and age group, April 2012 to March 2013

	Assault attendees (n=1,724)		All injuries (n=34,658)
	n	%	%
Gender			
Female	484	28	46
Male	1240	72	54
Mode of arrival			
Ambulance	790	46	22
Other	934	54	78
Age group			
0 - 4	5	0	10
5 - 19	391	23	25
20 - 34	795	46	23
35 - 49	377	22	16
50 - 64	126	7	11
65 plus	30	2	15

Published August 2013

Jennifer Brizell (TIIG researcher)

Centre for Public Health, Faculty of Health and Applied Social Sciences, Liverpool John Moores University
2nd Floor, Henry Cotton Campus, 15-21 Webster Street, Liverpool, L3 2ET

Tel: 0151 231 4500 Email: j.s.brizell@ljmu.ac.uk

Website: www.tiig.info (please note all data requests should be made through the TIIG website)