



TIIG

INJURY SURVEILLANCE IN THE NORTH WEST OF ENGLAND

Injury attendances to Salford Royal Emergency Department

April 2013 to March 2014

This report summarises recorded injury attendances to Salford Royal Emergency Department (ED) between April 2013 and March 2014.

Between April 2013 and March 2014 there were 27,311 injury attendances to Salford Royal ED. Males accounted for over half (55%) of all injury attendances. The month with the highest injury attendances was July (n=2,533) with February having the lowest attendances (n=1,972) (**Figure 1**). The majority (57%) of attendances were recorded as other injury. Of the specified injury groups, falls accounted for the highest proportion (20%) followed by road traffic collision (RTC) (6%), assault and sports injury both accounted for 5% (**Table 1**).

For all injuries the highest proportion of attendances were for persons aged 20-34 (26%) and 5-19 years (21%) (**Figure 2**). Almost half (48%) of fall attendees were aged 65 or over. Nearly half (49%) of assault attendees were aged 20-34. Over four in ten (41%) of RTC attendees were aged 20-34 (**Figure 3**).

Table 2 shows the ethnicity of injury attendees to Salford Royal ED. The large majority (85%) were white.

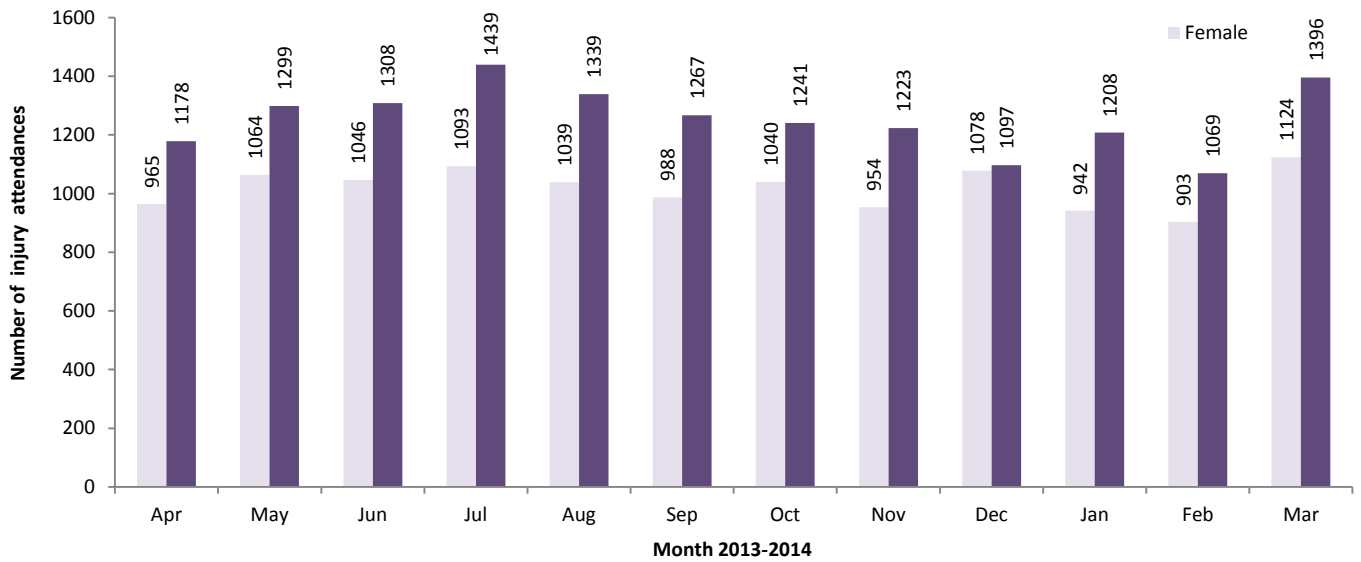
The disposal of a patient can give an indication of the severity of the injuries sustained. Almost half (48%) of attendees were discharged, over three in ten (31%) were referred and 19% were admitted (**Table 3**).

Table 4 shows the arrival methods of attendances at Salford Royal ED. Over a fifth (21%) of attendees arrived by ambulance.

Table 5 shows the incident location of injury attendances to Salford Royal ED. Almost seven in ten (68%) of injury attendances were recorded as other, while 16% occurred at home and 7% in a public place.

Table 6 presents data for assault attendees to Salford Royal ED. The majority of attendees were male (73%) and almost three in ten (28%) arrived by ambulance.

Figure 1: Salford Royal ED: Total injury attendances by gender and month, April 2013 to March 2014*



*Please note there were 11 attendances where gender was recorded as unknown.

Table 1: Salford Royal ED: Total injury attendances by injury group and month, April 2013 to March 2014*

Injury group	Apr	May	Jun	Jul	Aug	Sep	Oct	Nov	Dec	Jan	Feb	Mar	Total	%
Other injury	1243	1353	1398	1512	1340	1336	1332	1232	1219	1187	1081	1452	15685	57
Fall	438	484	435	440	434	415	428	434	474	497	434	496	5409	20
RTC	95	133	113	101	140	133	119	139	141	123	137	149	1523	6
Assault	113	109	101	118	149	128	125	96	126	120	113	115	1413	5
Sports injury	127	141	147	126	100	104	112	137	74	102	91	138	1399	5
DSH	67	78	75	78	90	73	94	82	93	74	77	80	961	4
Bites and stings	25	36	54	107	87	35	36	19	12	11	16	44	482	2
Burns and scalds	36	34	32	51	38	31	35	39	36	37	23	47	439	2
Total	2144	2368	2355	2533	2378	2255	2281	2178	2175	2151	1972	2521	27311	100

*Percentages may not add up to 100% due to rounding

Figure 2: Salford Royal ED: Total injury attendances by age group and month, April 2013 to March 2014

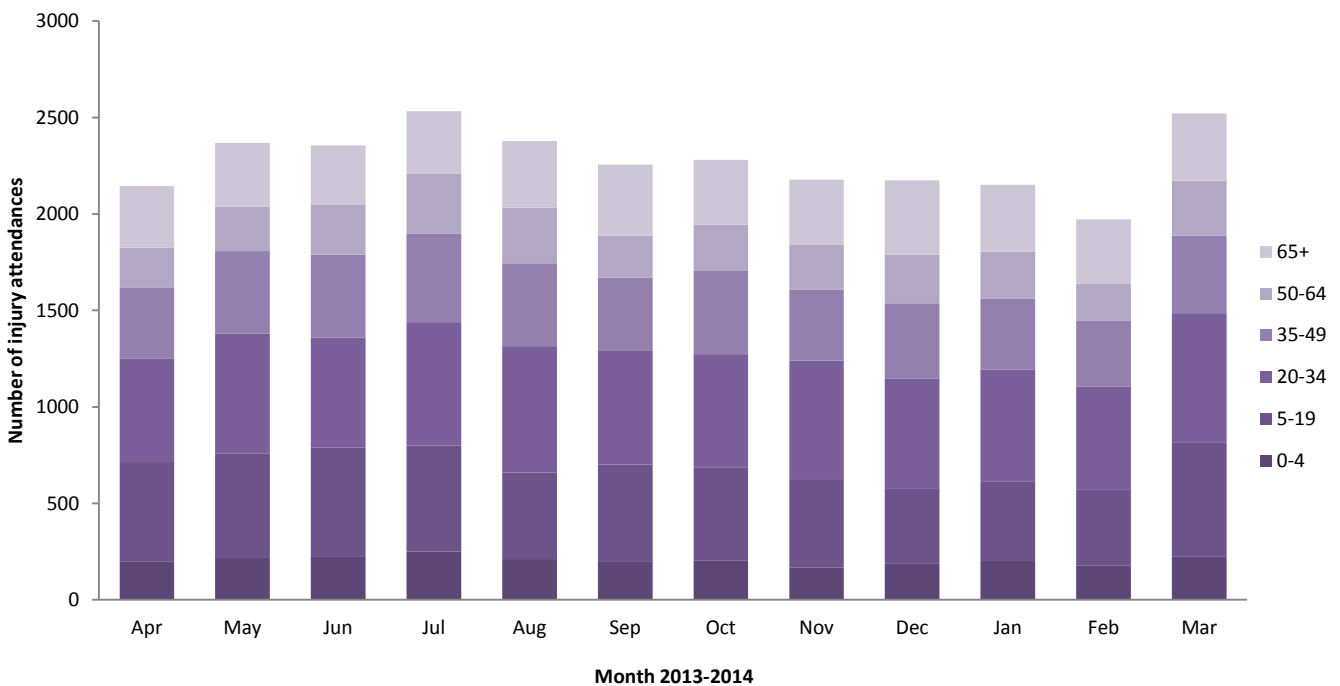


Figure 3: Salford Royal ED: Total injury attendances by age group and injury group (excluding other injury), April 2013 to March 2014

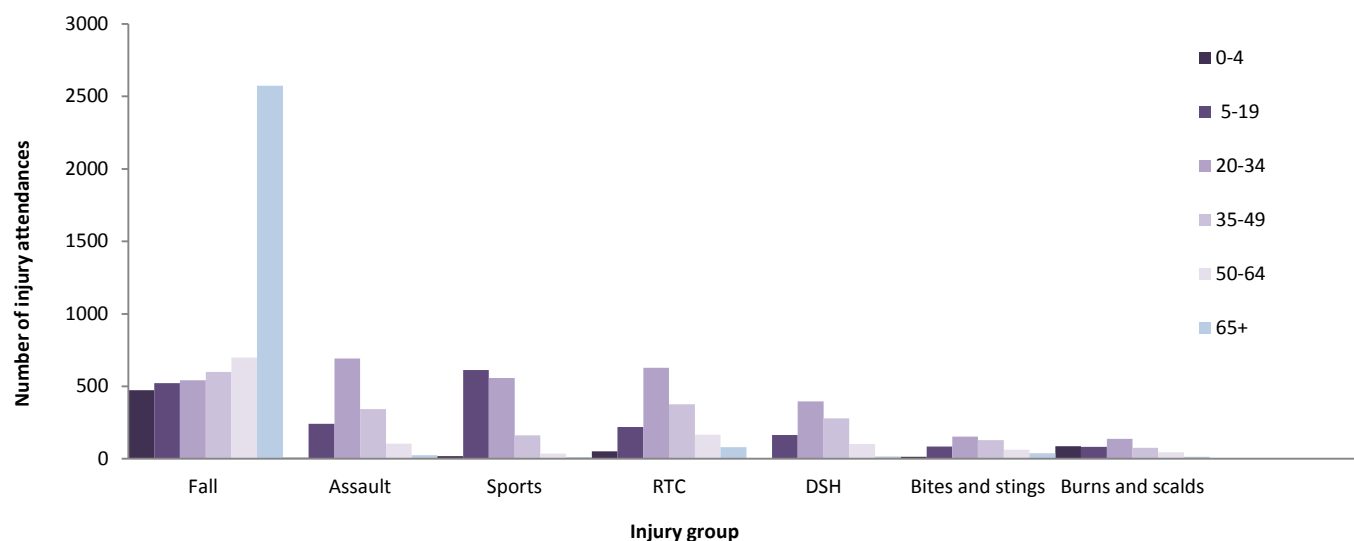


Table 2: Salford Royal ED: Total injury attendances by ethnicity and month, April 2013 to March 2014^{1,2}

Ethnicity	Apr	May	Jun	Jul	Aug	Sep	Oct	Nov	Dec	Jan	Feb	Mar	Total	%
White	1715	1899	1917	2126	2050	1968	1972	1886	1870	1899	1690	2171	23163	85
Not stated	325	315	295	255	173	139	166	151	156	125	145	173	2418	9
Any other ethnic group	37	53	49	52	57	45	56	47	49	52	47	59	603	2
Black	21	33	41	30	38	33	34	27	31	26	29	31	374	1
Mixed	16	18	18	23	20	19	19	23	27	12	22	36	253	1
Pakistani	12	13	12	14	15	8	9	11	11	8	13	18	144	1
Any other Asian background	6	17	7	12	12	16	8	17	16	12	10	10	143	1
Indian	***	7	6	6	***	12	<10	<10	<10	10	9	16	92	0
Chinese	7	<15	<10	9	7	10	6	5	***	<10	<10	7	84	0
Bangladeshi	***	***	***	6	***	5	***	***	5	***	***	0	37	0
Total	2144	2368	2355	2533	2378	2255	2281	2178	2175	2151	1972	2521	27311	100

Table 3: Salford Royal ED: Total injury attendances by method of disposal and month, April 2013 to March 2014^{*}

Disposal	Apr	May	Jun	Jul	Aug	Sep	Oct	Nov	Dec	Jan	Feb	Mar	Total	%
Discharged	1022	1173	1127	1224	1151	1055	1094	1031	1028	970	906	1220	13001	48
Referral/follow up	680	736	768	800	709	714	690	652	588	666	612	769	8384	31
Admitted	367	396	391	435	445	419	442	429	477	447	373	449	5070	19
Other	75	63	69	74	73	67	55	66	82	68	81	83	856	3
Total	2144	2368	2355	2533	2378	2255	2281	2178	2175	2151	1972	2521	27311	100

*Percentages may not add up to 100% due to rounding

Table 4: Salford Royal ED: Total injury attendances by arrival mode and month, April 2013 to March 2014

Arrival mode	Apr	May	Jun	Jul	Aug	Sep	Oct	Nov	Dec	Jan	Feb	Mar	Total	%
Other	1691	1885	1907	2050	1881	1765	1824	1710	1648	1659	1523	1991	21534	79
Brought in by Ambulance	453	483	448	483	497	490	457	468	527	492	449	530	5777	21
Total	2144	2368	2355	2533	2378	2255	2281	2178	2175	2151	1972	2521	27311	100

Table 5: Salford Royal ED: Total injury attendances by location of incident, April 2013 to March 2014

Location	Apr	May	Jun	Jul	Aug	Sep	Oct	Nov	Dec	Jan	Feb	Mar	Total	%
Other	1410	1516	1603	1700	1650	1510	1539	1453	1416	1389	1398	1880	18464	68
Home	361	415	361	424	391	359	355	340	395	377	301	321	4400	16
Public place	155	192	172	194	205	186	154	114	152	138	104	115	1881	7
Work	108	128	125	139	126	114	142	141	124	128	98	102	1475	5
Educational establishment	110	117	94	76	6	86	91	130	88	119	71	103	1091	4
Total	2144	2368	2355	2533	2378	2255	2281	2178	2175	2151	1972	2521	27311	100

Table 6: Salford Royal ED: Total assault attendances by gender, arrival mode and age group, April 2013 to March 2014^{*,^}

Gender	Assault attendees (n=1,413)		All injury attendees (n=27,311)
	N	%	%
Male	1032	73	55
Female	380	27	45
Arrival mode			
Ambulance	399	28	21
Other	1014	72	79
Age group			
0 - 4	7	0	9
5 - 19	241	17	21
20 - 34	692	49	26
35 - 49	343	24	18
50 - 64	105	7	11
65 plus	25	2	15

*Percentages may not add up to 100% due to rounding

^Please note there was one assault attendance where gender was recorded as unknown.

Published June 2014

Stuart Cole (TIIG researcher)

Centre for Public Health, Faculty of Health, Education and Community, Liverpool John Moores University

2nd Floor, Henry Cotton Campus, 15-21 Webster Street, Liverpool, L3 2ET

Contact - Jennifer Brizell: Tel: 0151 231 4500 Email: j.s.brizell@ljmu.ac.uk

Website: www.tiig.info

¹ Please note that all numbers less than five have been suppressed in line with patient confidentiality and if there is only one number <5 in a category then two numbers will be suppressed at the next level.

² White = Irish, British, other white background; Mixed = white and black, white and Asian, mixed any other; Black = African, Caribbean, other black.