

Injury attendances to Salford Royal Emergency Department

January to December 2010

This report summarises recorded injury attendances to Salford Royal Emergency Department (ED) between January and December 2010.

Between January and December 2010 there were 25,244 injury attendances to Salford Royal ED. Males accounted for over half (56%) of all injury attendances. The month with the highest injury attendances was June (n=2,430) with February having the lowest attendances (n=1,698) (**Figure 1**). The majority (53%) of attendances were recorded as other injury. Of the specified injury groups, falls (23%) accounted for the highest proportion followed by assault (7%), sports injury (5%) and road traffic collision (RTC) (5%) (**Table 1**).

For all injuries the highest proportion of attendances were for persons aged 20-34 years (26%) and 5-19 years (23%) (**Figure 2**). Over four in ten (41%) fall attendees were aged 65 or over. Nearly half (45%) of assault attendees were aged 20-34. Over four in ten (44%) of RTC attendees were aged 20-34 (**Figure 3**).

Table 2 shows the ethnicity of injury attendees to Salford Royal ED. The large majority (92%) were white.

The disposal of a patient can give an indication of the severity of the injuries sustained. Over half (52%) of attendees were discharged, almost four in ten (39%) were referred and 15% were admitted (**Table 3**).

Nearly half (46%) of RTC attendees were referred while nearly half (47%) of deliberate self harm (DSH) attendees were admitted (**Table 4**).

Table 5 shows the arrival methods of attendances at Salford Royal ED. Over a fifth (22%) of attendees arrived by ambulance.

Table 6 shows the time of arrival of injury attendees to Salford Royal ED. The largest proportion of injury attendances occurred between 10.00am and 11.59am (14%). **Table 7** shows the day of the week which injury attendees arrived at the hospital.

Table 8 presents data for assault attendees to Salford Royal ED. The majority of attendees were male (71%) and arrived by other means (64%). Over four in ten (44%) were aged 20-34 years. A quarter (25%) of assaults occurred in a public place and a quarter (25%) at the weekend between the hours of 8pm and 4am.

Figure 4 (a-d) shows crude rates of attendance at Salford Royal ED by attendee's area of residence, in this case Middle Super Output Area (MSOA). The MSOAs with the highest crude rates are indicated beneath each figure.¹

¹ Population figures are drawn from mid-2009 population estimates from the Office for National Statistics.

Figure 1: Salford Royal ED: Total injury attendances by gender and month, January to December 2010

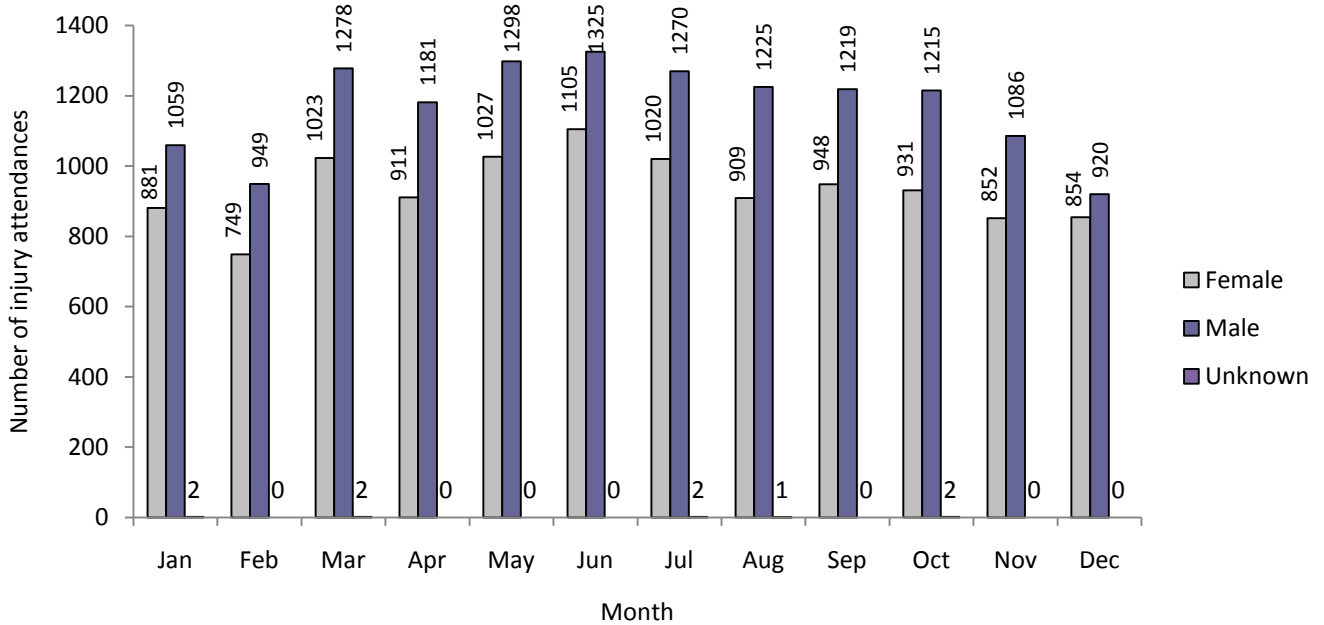


Table 1: Salford Royal ED: Total injury attendances by injury group and month, January to December 2010*

Injury group	Jan	Feb	Mar	Apr	May	Jun	Jul	Aug	Sep	Oct	Nov	Dec	Total	%
Other	930	853	1163	1128	1135	1368	1234	1196	1246	1166	1029	864	13312	53
Fall	592	407	526	482	591	467	488	406	420	418	391	527	5715	23
Assault	162	123	186	132	165	174	158	148	135	159	142	126	1810	7
Sports injury	56	101	153	155	157	125	101	105	124	146	114	48	1385	5
RTC	82	99	137	89	112	114	126	111	110	124	148	98	1350	5
DSH	64	61	66	46	79	70	76	85	52	67	60	55	781	3
Burns & scalds	36	41	44	30	47	56	37	45	41	40	43	40	500	2
Bites & stings	20	13	28	30	39	56	72	39	39	28	11	16	391	2
Total	1942	1698	2303	2092	2325	2430	2292	2135	2167	2148	1938	1774	25244	100

*Firework injury has been included in other injury due to low numbers (n=25).

Figure 2: Salford Royal ED: Total injury attendances by age group and month, January to December 2010

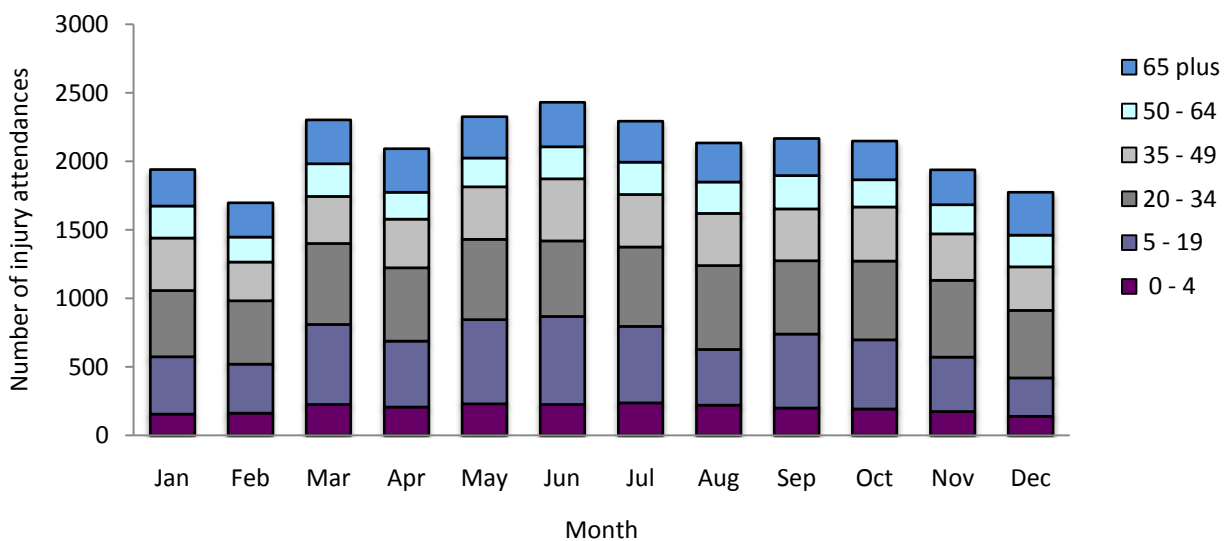


Figure 3: Salford Royal ED: Total injury attendances by age group and injury group (excluding bites and stings, and burns and scalds), January to December 2010

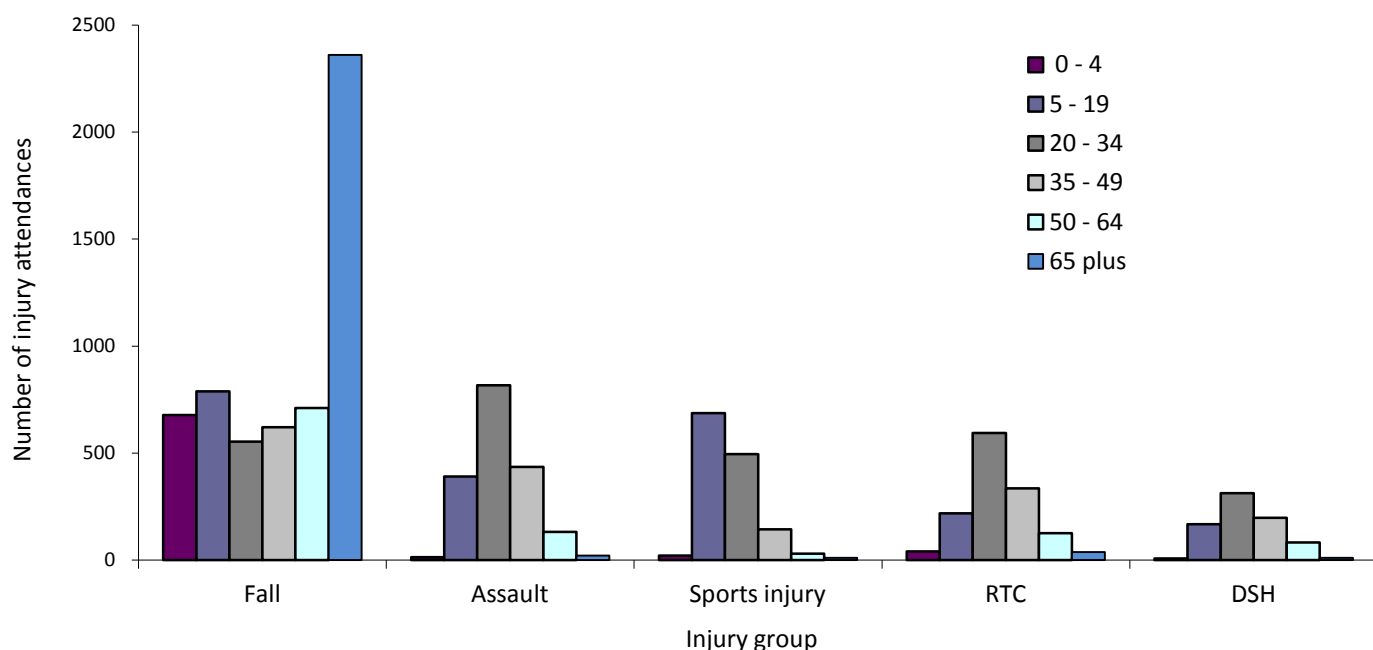


Table 2: Salford Royal ED: Total injury attendances by ethnicity and month, January to December 2010²

Ethnicity	Jan	Feb	Mar	Apr	May	Jun	Jul	Aug	Sep	Oct	Nov	Dec	Total	%
White	1768	1539	2087	1911	2125	2247	2093	2000	1990	1968	1799	1648	23175	92
Other ethnic group	67	77	78	66	79	58	72	56	61	65	50	49	778	3
Not stated	54	36	58	39	34	33	44	31	29	35	17	15	425	2
Black	16	12	29	18	28	31	22	22	25	22	30	20	275	1
Mixed	10	12	22	20	21	23	23	10	26	24	19	14	224	1
Pakistani	11	8	***	15	15	13	21	***	16	17	7	12	146	1
Indian	***	***	13	8	***	***	***	8	9	7	9	8	98	0
Chinese	7	7	7	9	12	11	6	***	11	***	***	***	88	0
Bangladeshi	***	***	***	6	***	***	***	0	0	***	***	***	35	0
Total	1942	1698	2303	2092	2325	2430	2292	2135	2167	2148	1938	1774	25244	100

Table 3: Salford Royal ED: Total injury attendances by method of disposal and month, January to December 2010

Disposal	Jan	Feb	Mar	Apr	May	Jun	Jul	Aug	Sep	Oct	Nov	Dec	Total	%
Discharged	974	831	1152	1074	1185	1259	1202	1126	1198	1184	1039	888	13112	52
Referral	620	539	735	623	693	737	668	616	575	570	560	478	7414	39
Admitted	301	286	344	328	345	344	336	318	329	327	279	350	3887	15
Other	47	42	72	67	102	90	86	75	65	67	60	58	831	3
Total	1942	1698	2303	2092	2325	2430	2292	2135	2167	2148	1938	1774	25244	100

² Please note that all numbers less than five have been suppressed in line with patient confidentiality and if there is only one number <5 in a category then two numbers will be suppressed at the next level.

Table 4: Salford Royal ED: Total injury attendances by method of disposal and injury group, January to December 2010*

Disposal	Assault		Bites & stings		Burns & scalds		DSH		Fall		Other		RTC		Sports injury		Total
	n	%	n	%	n	%	n	%	n	%	n	%	n	%	n	%	n
Discharged	875	48	165	42	208	42	183	23	2487	44	7804	59	619	46	771	56	13112
Referral	473	26	166	42	225	45	146	19	1320	23	3912	29	617	46	555	40	7414
Admitted	281	16	43	11	53	11	368	47	1794	31	1225	9	77	6	46	3	3887
Other	181	10	17	4	14	3	84	11	114	2	371	3	37	3	13	1	831
Total	1810	100	391	100	500	100	781	100	5715	100	13312	100	1350	100	1385	100	25244

*Percentages may not add to 100 due to rounding.

Table 5: Salford Royal ED: Total injury attendances by mode of arrival and month, January to December 2010*

Mode	Jan	Feb	Mar	Apr	May	Jun	Jul	Aug	Sep	Oct	Nov	Dec	Total	%
Other	1488	1279	1808	1643	1818	1913	1769	1662	1700	1665	1502	1321	19568	78
Ambulance	454	419	495	449	507	517	523	473	467	483	436	453	5676	22
Total	1942	1698	2303	2092	2325	2430	2292	2135	2167	2148	1938	1774	25244	100

*Percentages may not add to 100 due to rounding.

Table 6: Salford Royal ED: Total injury attendances by time of arrival and injury group, January to December 2010

Time	Assault		Bites & stings		Burns & scalds		DSH		Fall		Other		RTC		Sports injury		Total	
	n	%	n	%	n	%	n	%	n	%	n	%	n	%	n	%	n	%
0-1.59	216	12	14	4	21	4	116	15	212	4	334	3	20	1	11	1	944	4
2-3.59	182	10	6	2	11	2	81	10	163	3	208	2	11	1	10	1	672	3
4-5.59	133	7	***	***	***	***	46	6	115	2	143	1	9	1	6	0	459	2
6-7.59	69	4	***	***	***	***	22	3	180	3	309	2	26	2	41	3	659	3
8-9.59	80	4	26	7	39	8	20	3	547	10	1349	10	121	9	174	13	2356	9
10-11.59	126	7	38	10	67	13	39	5	826	14	2049	15	211	16	201	15	3557	14
12-13.59	148	8	43	11	71	14	45	6	744	13	1959	15	201	15	209	15	3420	14
14-15.59	188	10	46	12	67	13	47	6	717	13	1803	14	185	14	150	11	3203	13
16-17.59	153	8	67	17	46	9	67	9	681	12	1688	13	177	13	169	12	3048	12
18-19.59	138	8	57	15	71	14	92	12	628	11	1618	12	196	15	176	13	2976	12
20-21.59	171	9	42	11	61	12	88	11	556	10	1181	9	136	10	173	13	2408	10
22-23.59	201	11	41	10	37	7	112	14	334	6	629	5	51	4	64	5	1469	6
Total	1805	100	391	100	499	100	775	100	5703	100	13270	100	1344	100	1384	100	25171	100

*Time of attendance was not recorded in 73 cases.

Table 7: Salford Royal ED: Total injury attendances by day and injury group, January to December 2010*

Day	Assault		Bites & stings		Burns & scalds		DSH		Fall		Other		RTC		Sports injury		Total	
	n	%	n	%	n	%	n	%	n	%	n	%	n	%	n	%	n	%
Mon	270	15	54	14	78	16	107	14	880	15	2259	17	194	14	250	18	4092	16
Tues	194	11	41	10	70	14	102	13	859	15	1969	15	204	15	224	16	3663	15
Wed	192	11	49	13	75	15	116	15	835	15	1984	15	228	17	203	15	3682	15
Thu	178	10	51	13	68	14	94	12	789	14	1878	14	243	18	194	14	3495	14
Fri	224	12	43	11	69	14	109	14	820	14	1817	14	209	15	161	12	3452	14
Sat	348	19	69	18	67	13	131	17	777	14	1586	12	127	9	152	11	3257	13
Sun	404	22	84	21	73	15	122	16	755	13	1819	14	145	11	201	15	3603	14
Total	1810	100	391	100	500	100	781	100	5715	100	13312	100	1350	100	1385	100	25244	100

*Percentages may not add to 100 due to rounding.

Table 8: Salford Royal ED: Total assault and all injury attendances by gender, arrival mode, location of incident, age group and day/time of attendance, January to December 2010

Injury type	Assault attendees		All injury attendees (n=25,244)
Gender*	n	%	%
<i>Male</i>	1286	71	53
<i>Female</i>	523	29	47
Arrival mode	n	%	%
<i>Ambulance</i>	654	36	26
<i>Other</i>	1156	64	74
Location	n	%	%
<i>Other</i>	1135	63	65
<i>Public place</i>	448	25	11
<i>Home</i>	113	6	15
<i>Work</i>	77	4	5
<i>Educational establishment</i>	37	2	4
Age group*	n	%	%
<i>0 - 4</i>	14	0	11
<i>5 - 19</i>	390	26	20
<i>20 - 34</i>	817	44	23
<i>35 - 49</i>	435	21	18
<i>50 - 64</i>	132	7	12
<i>65 plus</i>	21	1	16
Day and time of attendance*	n	%	%
<i>Weekends**</i>	459	25	10
<i>Weekend day</i>	401	22	20
<i>Weekdays</i>	945	52	70

*Gender was not recorded in one assault case; age was not recorded in one assault case; time of attendance was not recorded in five assault cases.

**8pm to 4am, Friday night/Saturday morning; Saturday night/Sunday morning; Sunday night/Monday morning.

Author: Ian Warren, published May 2011

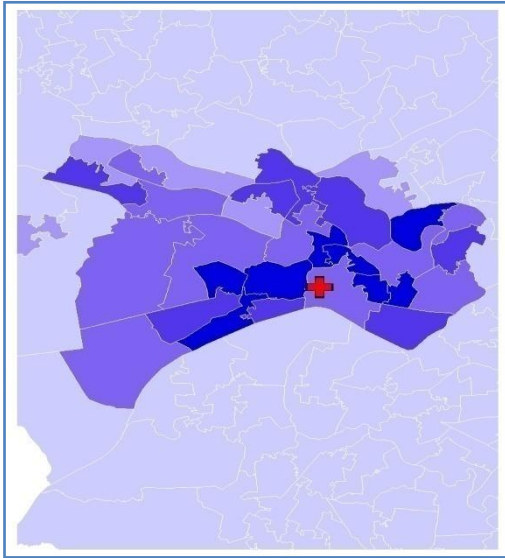
For further information please contact: Centre for Public Health, Research Directorate, Liverpool John Moores University, 2nd Floor, Henry Cotton Building, 15-21 Webster Street, Liverpool, L3 2ET, Tel: 0151 231 4513 or Email: ij.warren@ljmu.ac.uk

Website: www.tiig.info (data requests should be made through the website)

Figure 4a,b,c,d: Middle Super Output Area of residence for injury attendances to Salford Royal ED. Quintiles of crude rates per 1,000 population, January to December 2010

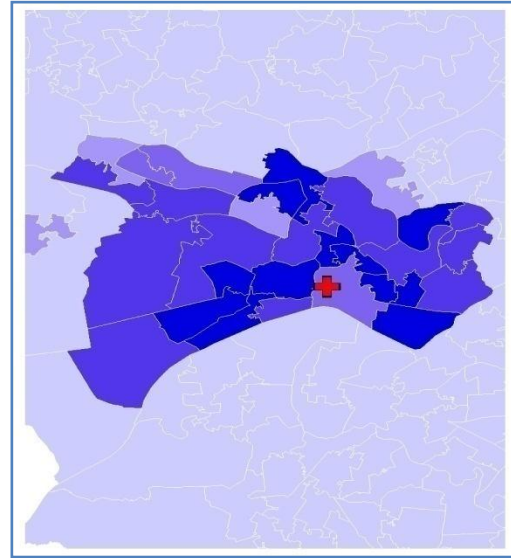
a) All injury attendances: quintiles of crude rates per 1,000 population b) Fall: quintiles of crude rates per 1,000 population

✚ Salford Royal ED



1 (0.00 – 10.32)	MSOA E02001167 (184.30)
2 (10.33 – 35.47)	MSOA E02001175 (175.55)
3 (35.48 – 85.32)	MSOA E02001174 (158.18)
4 (85.33 – 128.00)	MSOA E02001183 (155.29)
5 (128.01 – 184.30)	

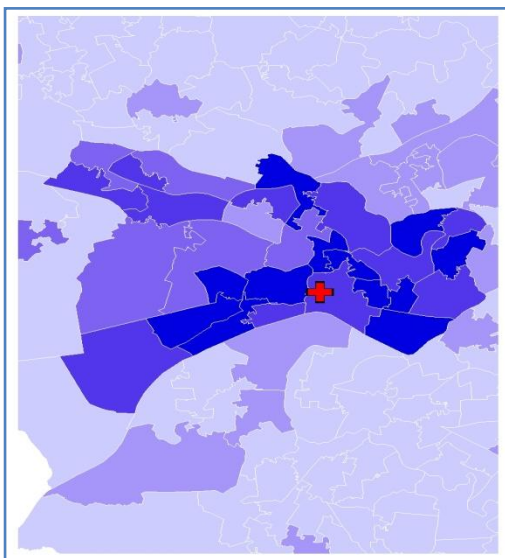
✚ Salford Royal ED



1 (0.00 – 2.04)	MSOA E02001175 (57.22)
2 (2.05 – 7.22)	MSOA E02001167 (46.44)
3 (7.23 – 11.05)	MSOA E02001179 (39.74)
4 (11.06 – 24.36)	MSOA E02001176 (38.94)
5 (24.37 – 57.22)	

c) Assault: quintiles of crude rates per 1,000 population

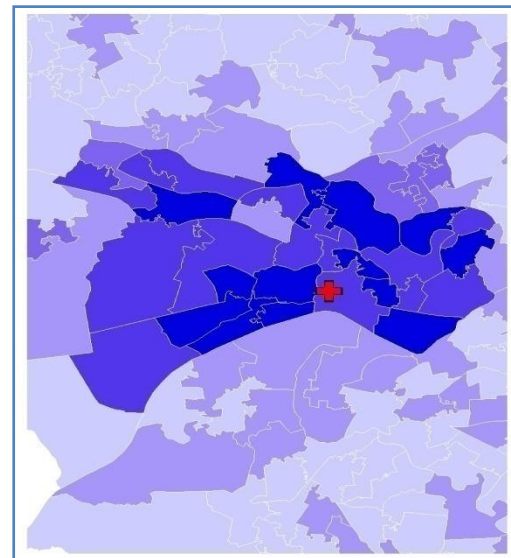
✚ Salford Royal ED



1 (0.00 – 0.25)	MSOA E02001179 (17.37)
2 (0.26 – 1.10)	MSOA E02001180 (12.96)
3 (1.11 – 2.98)	MSOA E02001181 (12.89)
4 (2.99 – 7.53)	MSOA E02001174 (12.60)
5 (7.54 – 17.37)	

d) RTC: quintiles of crude rates per 1,000 population

✚ Salford Royal ED



1 (0.00 – 0.14)	MSOA E02001167 (7.93)
2 (0.15 – 0.68)	MSOA E02001183 (7.64)
3 (0.69 – 1.65)	MSOA E02001175 (7.52)
4 (1.66 – 4.63)	MSOA E02001176 (7.18)
5 (4.64 – 7.93)	