

## Injury attendances to Salford Royal Emergency Department

### October 2010 to September 2011

This report summarises recorded injury attendances to Salford Royal Emergency Department (ED) between October 2010 and September 2011.

Between October 2010 and September 2011 there were 25,542 injury attendances to Salford Royal ED. Males accounted for over half (55%) of all injury attendances. The month with the highest injury attendances was September (n=2,480) with December having the lowest attendances (n=1,774) (**Figure 1**). The majority (55%) of attendances were recorded as other injury. Of the specified injury groups falls (21%) accounted for the highest proportion followed by assault (7%), sports injury (5%) and road traffic collision (RTC) (5%) (**Table 1**).

For all injuries the highest proportion of attendances were for persons aged 20 to 34 (26%) and 5 to 19 years (23%) (**Figure 2**). Over four in ten (41%) of fall attendees were aged 65 or over. Nearly half (47%) of assault attendees were aged 20 to 34. Over four in ten (43%) of RTC attendees were aged 20 to 34 (**Figure 3**).

**Table 2** shows the ethnicity of injury attendees to Salford Royal ED. The large majority (93%) were white.

The disposal of a patient can give an indication of the severity of the injuries sustained. Half (50%) of attendees were discharged, three in ten (30%) were

referred and 16% were admitted (**Table 3**). Almost four in ten (37%) of RTC attendees were referred while over two-fifths (44%) of deliberate self-harm (DSH) attendees were admitted (**Table 4**).

**Table 5** shows the arrival methods of attendances at Salford Royal ED. Over a fifth (22%) of attendees arrived by ambulance.

**Table 6** shows the incident location of injury attendances to Salford Royal ED. Over six in ten (62%) of injury attendances were recorded as other, while 18% occurred at home and 15% in a public place. Over two-fifths (41%) of burns injuries occurred at home.

**Table 7** presents data for assault attendees to Salford Royal ED. The majority of attendees were male (69%) and almost a half (47%) were aged 20 to 34 years. Almost a third (32%) arrived by ambulance. Over a quarter (26%) of assaults occurred in a public place and over a quarter (26%) presented at the ED at the weekend between the hours of 8pm and 3.59am.

Figure 1: Salford Royal ED: Total injury attendances by gender and month, October 2010 to September 2011

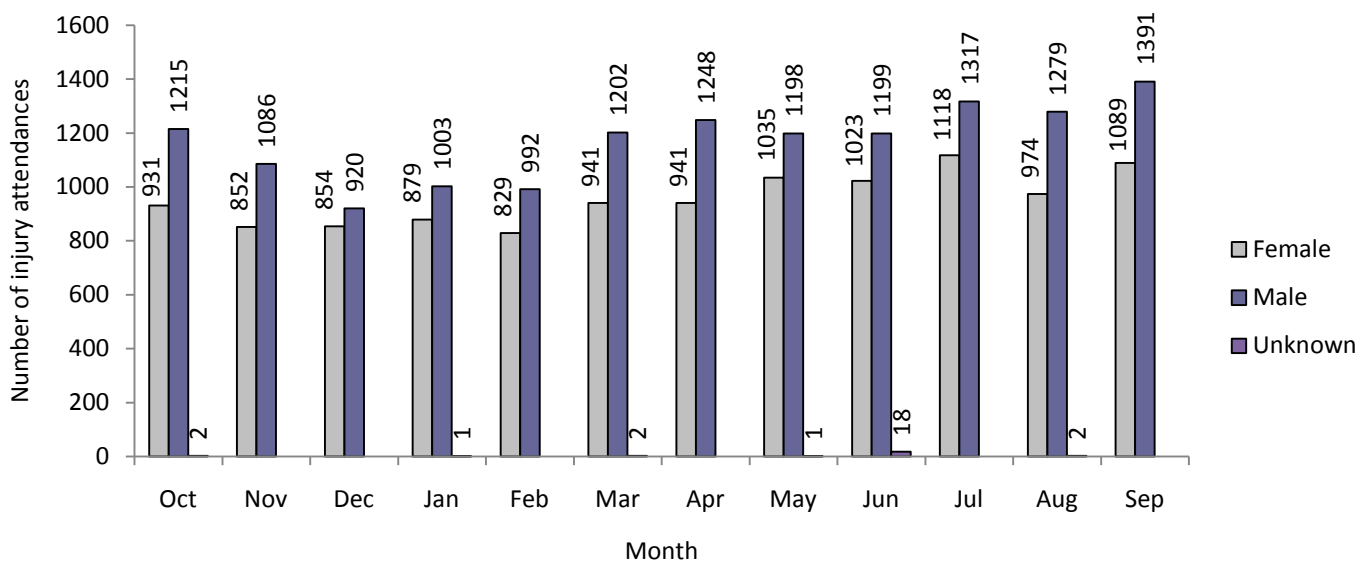
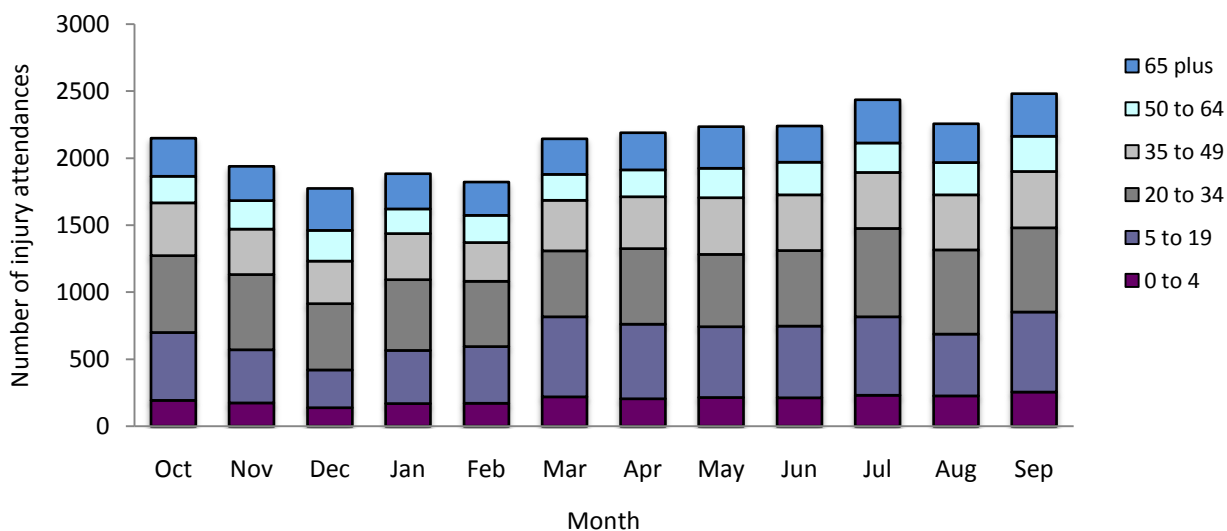


Table 1: Salford Royal ED: Total injury attendances by injury group and month, October 2010 to September 2011<sup>1</sup>

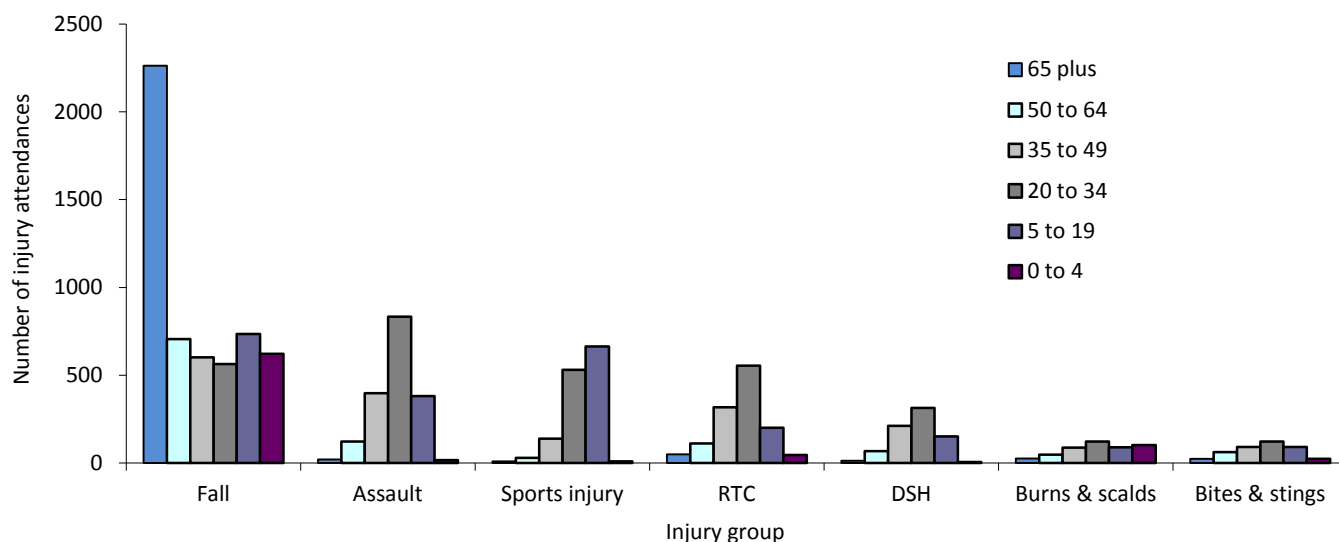
Injury group	Oct	Nov	Dec	Jan	Feb	Mar	Apr	May	Jun	Jul	Aug	Sep	Total	%
Other injury	1166	1029	864	1006	941	1161	1214	1225	1293	1288	1295	1485	13967	55
Fall	418	391	527	396	420	448	455	489	468	543	459	476	5490	21
Assault	159	142	126	181	131	136	151	153	134	186	143	129	1771	7
Sports injury	146	114	48	99	127	160	116	105	85	152	101	129	1382	5
RTC	124	148	98	88	99	122	111	118	108	80	91	91	1278	5
DSH	67	60	55	70	42	62	69	73	66	59	62	78	763	3
Burns & scalds	40	43	40	34	47	38	35	42	43	39	29	46	476	2
Bites & stings	28	11	16	9	14	18	38	29	43	88	75	46	415	2
<b>Total</b>	<b>2148</b>	<b>1938</b>	<b>1774</b>	<b>1883</b>	<b>1821</b>	<b>2145</b>	<b>2189</b>	<b>2234</b>	<b>2240</b>	<b>2435</b>	<b>2255</b>	<b>2480</b>	<b>25542</b>	<b>100</b>

Figure 2: Salford Royal ED: Total injury attendances by age group and month, October 2010 to September 2011



<sup>1</sup> Firework injury has been included in other injury due to low numbers (n=26).

**Figure 3: Salford Royal ED: Total injury attendances by age group and injury group (excluding other injury), October 2010 to September 2011**



**Table 2: Salford Royal ED: Total injury attendances by ethnicity and month, October 2010 to September 2011<sup>2\*</sup>**

Ethnicity	Oct	Nov	Dec	Jan	Feb	Mar	Apr	May	Jun	Jul	Aug	Sep	Total	%
White	1968	1799	1648	1742	1711	1994	2043	2080	2066	2249	2111	2307	23718	93
Other ethnic group	49	43	40	53	38	57	45	47	56	44	41	51	564	2
Black	22	30	20	20	19	26	32	26	24	34	21	33	307	1
Not stated	35	17	15	13	19	20	19	14	23	37	29	17	258	1
Mixed	24	19	14	23	14	18	26	25	20	27	21	23	254	1
Pakistani	17	7	12	8	***	5	***	16	19	13	9	16	129	1
Other Asian background	16	7	9	***	8	***	***	***	13	13	9	15	109	0
Indian	7	9	8	10	***	11	5	10	9	11	8	7	98	0
Chinese	***	***	***	5	6	7	8	6	***	***	***	***	70	0
Bangladeshi	***	***	***	***	0	***	***	***	***	***	***	***	35	0
<b>Total</b>	<b>2148</b>	<b>1938</b>	<b>1774</b>	<b>1883</b>	<b>1821</b>	<b>2145</b>	<b>2189</b>	<b>2234</b>	<b>2240</b>	<b>2435</b>	<b>2255</b>	<b>2480</b>	<b>25542</b>	<b>100</b>

\*Percentages may not add to one hundred due to rounding.

**Table 3: Salford Royal ED: Total injury attendances by method of disposal and month, October 2010 to September 2011**

Disposal	Oct	Nov	Dec	Jan	Feb	Mar	Apr	May	Jun	Jul	Aug	Sep	Total	%
Discharged	1184	1039	888	970	900	1055	1080	1091	1144	1185	1082	1178	12796	50
Referred/follow-up	570	560	478	555	532	653	683	668	658	815	757	833	7762	30
Admitted	327	279	350	296	321	354	318	396	344	331	322	347	3985	16
Other	67	60	58	62	68	83	108	79	94	104	94	122	999	4
<b>Total</b>	<b>2148</b>	<b>1938</b>	<b>1774</b>	<b>1883</b>	<b>1821</b>	<b>2145</b>	<b>2189</b>	<b>2234</b>	<b>2240</b>	<b>2435</b>	<b>2255</b>	<b>2480</b>	<b>25542</b>	<b>100</b>

**Table 4: Salford Royal ED: Total injury attendances by method of disposal and injury group (excluding other injury), October 2010 to September 2011**

Disposal	Assault		Bites & stings		Burns & scalds		DSH		Fall		RTC		Sports injury		Total	
	n	%	n	%	n	%	n	%	n	%	n	%	n	%	n	%
Discharged	858	48	202	49	189	40	174	23	2246	41	684	54	700	51	5053	44
Referred/follow-up	442	25	153	37	217	46	166	22	1308	24	468	37	611	44	3365	29
Admitted	280	16	43	10	48	10	332	44	1783	32	78	6	55	4	2619	23
Other	191	11	17	4	22	5	91	12	153	3	48	4	16	1	538	5
<b>Total</b>	<b>1771</b>	<b>100</b>	<b>415</b>	<b>100</b>	<b>476</b>	<b>100</b>	<b>763</b>	<b>100</b>	<b>5490</b>	<b>100</b>	<b>1278</b>	<b>100</b>	<b>1382</b>	<b>100</b>	<b>11575</b>	<b>100</b>

<sup>2</sup> Please note that all numbers less than five have been suppressed in line with patient confidentiality and if there is only one number <5 in a category then two numbers will be suppressed at the next level.

**Table 5: Salford Royal ED: Total injury attendances by arrival mode and month, October 2010 to September 2011\***

Arrival mode	Oct	Nov	Dec	Jan	Feb	Mar	Apr	May	Jun	Jul	Aug	Sep	Total	%
Other	1665	1502	1321	1473	1395	1678	1705	1746	1773	1988	1818	1985	20049	78
Ambulance	483	436	453	410	426	467	484	488	467	447	437	495	5493	22
<b>Total</b>	<b>2148</b>	<b>1938</b>	<b>1774</b>	<b>1883</b>	<b>1821</b>	<b>2145</b>	<b>2189</b>	<b>2234</b>	<b>2240</b>	<b>2435</b>	<b>2255</b>	<b>2480</b>	<b>25542</b>	<b>100</b>

**Table 6: Salford Royal ED: Total injury attendances by location of incident and injury group (excluding other injury), October 2010 to September 2011\***

Location	Assault		Bites & stings		Burns & scalds		DSH		Fall		RTC		Sports injury		Total	
	n	%	n	%	n	%	n	%	n	%	n	%	n	%	n	%
Other	1081	61	351	85	191	40	743	97	2419	44	1255	98	1175	85	7215	62
Home	119	7	25	6	193	41	11	1	1703	31	***	0	***	1	2066	18
Public place	464	26	26	6	11	2	7	1	1065	19	15	1	92	7	1680	15
Educational establishment	39	2	***	1	5	1	***	0	183	3	***	0	98	7	330	3
Work	68	4	***	2	76	16	***	0	120	2	6	0	***	0	284	2
<b>Total</b>	<b>1771</b>	<b>100</b>	<b>415</b>	<b>100</b>	<b>476</b>	<b>100</b>	<b>763</b>	<b>100</b>	<b>5490</b>	<b>100</b>	<b>1278</b>	<b>100</b>	<b>1382</b>	<b>100</b>	<b>11575</b>	<b>100</b>

**Table 7: Salford Royal ED: Total assault attendances by gender, arrival mode, location of incident, age group and day/time of attendance, October 2010 to September 2011\***

	Assault attendees (n=1,771)		All injury attendees (n=25,542)
	n	%	%
<b>Gender</b>			
Male	1222	69	55
Female	549	31	45
<b>Arrival mode</b>			
Ambulance	573	32	28
Other	1198	68	72
<b>Location</b>			
Other	1081	61	62
Public place	464	26	15
Home	119	7	18
Work	68	4	2
Educational establishment	39	2	3
<b>Age group*</b>			
0 - 4	16	1	9
5 - 19	381	22	23
20 - 34	834	47	26
35 - 49	397	22	18
50 - 64	123	7	10
65 plus	20	1	13
<b>Day and time of attendance*</b>			
Weekend nights**	464	26	10
Weekend day	428	24	21
Weekdays	879	50	69

\*Percentages may not add to 100 due to rounding.

\*\*8pm to 3.59am, Friday night/Saturday morning; Saturday night/Sunday morning; Sunday night/Monday morning.

Author: Ian Warren, Published: January 2012

For further information please contact: Centre for Public Health, Research Directorate, Liverpool John Moores University, 2<sup>nd</sup> Floor, Henry Cotton Building, 17-21 Webster Street, Liverpool, L3 2ET, Tel: 0151 231 4513 or Email: [i.j.warren@ljmu.ac.uk](mailto:i.j.warren@ljmu.ac.uk). Website: [www.tiig.info](http://www.tiig.info)  
(data requests should be made through the website)