

Injury attendances to Salford Royal Emergency Department

April 2011 to March 2012

This report summarises recorded injury attendances to Salford Royal Emergency Department (ED) between April 2011 and March 2012.

Between April 2011 and March 2012 there were 26,625 injury attendances to Salford Royal ED. Males accounted for over half (55%) of all injury attendances. The month with the highest injury attendances was September (n=2,480) with December having the lowest attendances (n=1,910) (**Figure 1**). The majority (54%) of attendances were recorded as 'other injury'. Of the specified injury groups falls (23%) accounted for the highest proportion followed by assault (7%), sports injury (5%) and road traffic collision (RTC) (5%) (**Table 1**).

For all injuries the highest proportion of attendances were for persons aged 20 to 34 (26%) and 5 to 19 years (23%) (**Figure 2**). Almost four in ten (39%) of fall attendees were aged 65 or over. Nearly half (46%) of assault attendees were aged 20 to 34. Four in ten (40%) of RTC attendees were aged 20 to 34 (**Figure 3**).

Table 2 shows the ethnicity of injury attendees to Salford Royal ED. The large majority (93%) were white.

The disposal of a patient can give an indication of the severity of the injuries sustained. Almost half (49%) of attendees were discharged, over three in ten

(32%) were referred and 16% were admitted (**Table 3**). Almost a third (32%) of RTC attendees were referred while over two-fifths (45%) of deliberate self-harm (DSH) attendees were admitted (**Table 4**).

Table 5 shows the arrival methods of attendances at Salford Royal ED. Over a fifth (21%) of attendees arrived by ambulance.

Table 6 shows the incident location of injury attendances to Salford Royal ED. Almost six in ten (57%) of injury attendances were recorded as 'other', while 20% occurred at home and 17% in a public place. Almost a half (48%) of burns and scalds injuries occurred at home.

Table 7 presents data for assault attendees to Salford Royal ED. The majority of attendees were male (69%) and almost a half (46%) were aged 20 to 34 years. Over a third (34%) arrived by ambulance. Almost a third (31%) of assaults occurred in a public place.

Figure 1: Salford Royal ED: Total injury attendances by gender and month, April 2011 to March 2012

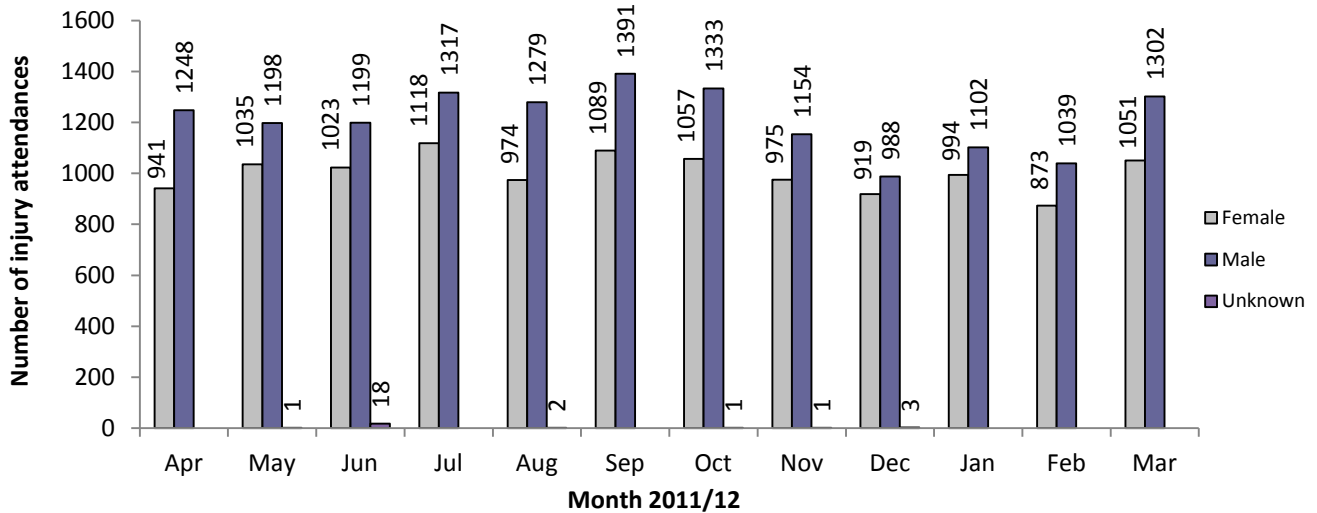
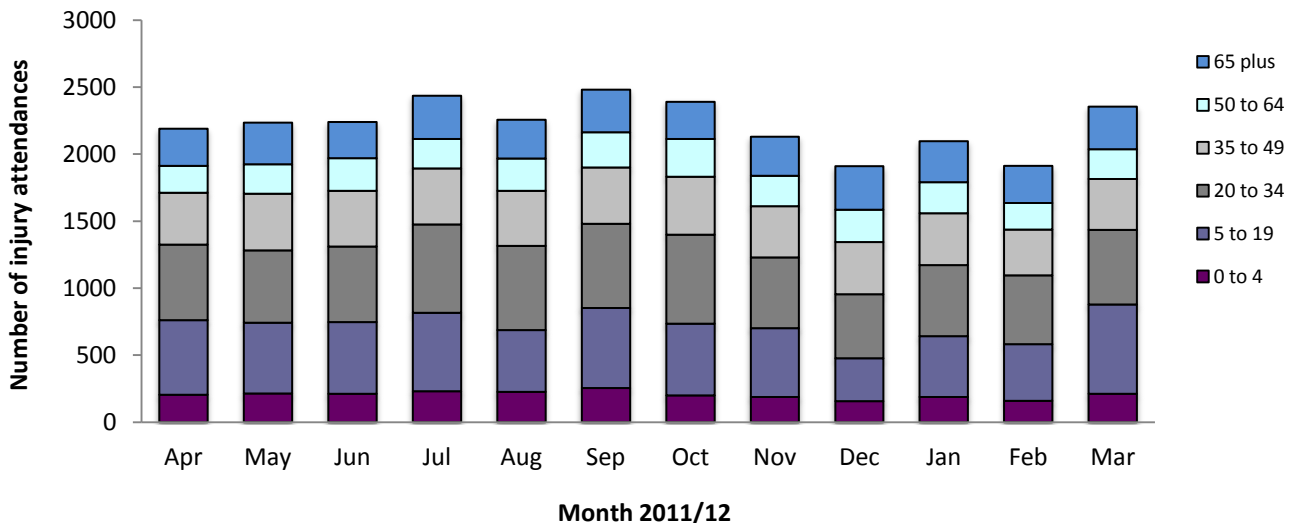


Table 1: Salford Royal ED: Total injury attendances by injury group and month, April 2011 to March 2012¹

Injury group	Apr	May	Jun	Jul	Aug	Sep	Oct	Nov	Dec	Jan	Feb	Mar	Total	%
Other injury	1214	1225	1293	1288	1295	1485	1295	1090	903	1009	987	1321	14405	54
Fall	455	489	468	543	459	476	520	542	589	588	500	603	6232	23
Assault	151	153	134	186	143	129	163	169	120	127	134	141	1750	7
Sports injury	116	105	85	152	101	129	154	116	48	86	70	104	1266	5
RTC	111	118	108	80	91	91	109	93	120	132	90	82	1225	5
DSH	69	73	66	59	62	78	75	66	88	87	76	48	847	3
Bites and stings	38	29	43	88	75	46	32	22	16	31	24	24	468	2
Burns and scalds	35	42	43	39	29	46	43	32	26	36	31	30	432	2
Total	2189	2234	2240	2435	2255	2480	2391	2130	1910	2096	1912	2353	26625	100

*Percentages may not add to one hundred due to rounding.

Figure 2: Salford Royal ED: Total injury attendances by age group and month, April 2011 to March 2012



¹ Firework injury has been included in other injury due to low numbers (n=15).

Figure 3: Salford Royal ED: Total injury attendances by age group and injury group (excluding other injury), April 2011 to March 2012

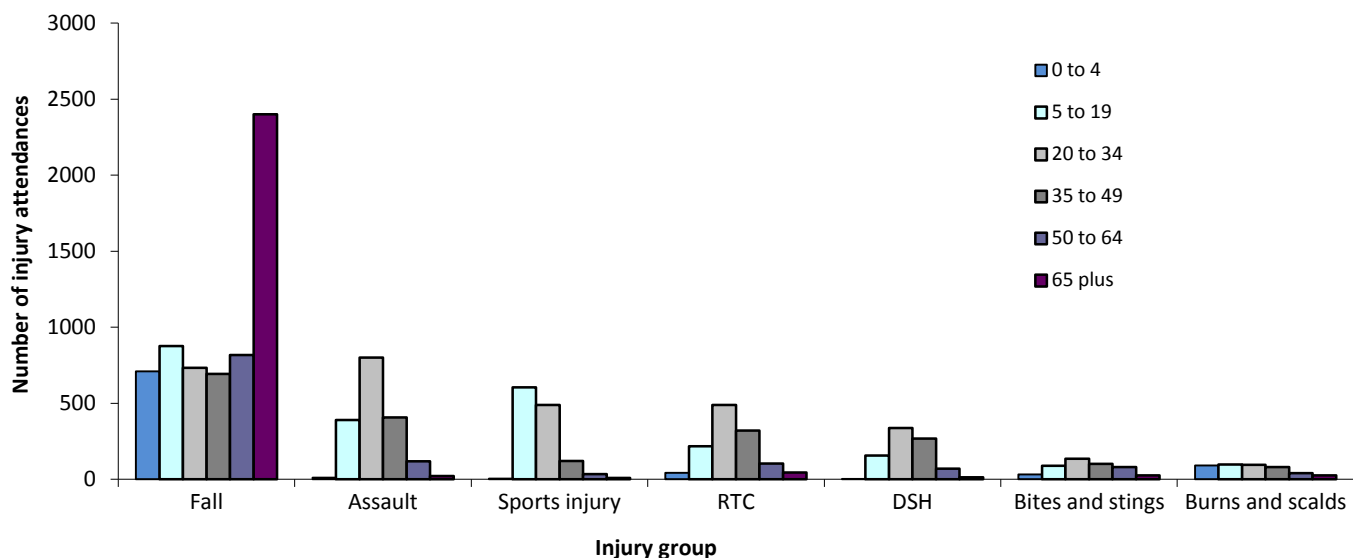


Table 2: Salford Royal ED: Total injury attendances by ethnicity and month, April 2011 to March 2012^{2*}

Ethnicity	Apr	May	Jun	Jul	Aug	Sep	Oct	Nov	Dec	Jan	Feb	Mar	Total	%
White	2043	2080	2066	2249	2111	2307	2193	1974	1759	1963	1755	2176	24676	93
Any other ethnic group	45	47	56	44	41	51	57	39	32	32	40	46	530	2
Not stated	19	14	23	37	29	17	48	40	28	25	30	42	352	1
Black	32	26	24	34	21	33	27	37	28	26	27	24	339	1
Mixed	26	25	20	27	21	23	25	10	21	11	25	31	265	1
Any other Asian background	***	***	13	13	9	15	8	12	7	14	13	9	124	0
Pakistani	***	16	19	13	9	16	13	***	***	9	7	8	122	0
Indian	5	10	9	11	8	7	10	6	13	6	7	13	105	0
Chinese	8	***	***	***	***	***	***	7	15	***	***	***	85	0
Bangladeshi	***	***	***	***	***	***	***	***	***	***	***	***	27	0
Total	2189	2234	2240	2435	2255	2480	2391	2130	1910	2096	1912	2353	26625	100

*Percentages may not add to one hundred due to rounding.

Table 3: Salford Royal ED: Total injury attendances by method of disposal and month, April 2011 to March 2012*

Disposal	Apr	May	Jun	Jul	Aug	Sep	Oct	Nov	Dec	Jan	Feb	Mar	Total	%
Discharged	1080	1091	1144	1185	1082	1178	1141	1006	933	1012	946	1195	12993	49
Follow-up/referral	683	668	658	815	757	833	812	679	549	648	576	755	8433	32
Admitted	318	396	344	331	322	347	334	363	368	373	317	327	4140	16
Other	108	79	94	104	94	122	104	82	60	63	73	76	1059	4
Total	2189	2234	2240	2435	2255	2480	2391	2130	1910	2096	1912	2353	26625	100

*Percentages may not add to one hundred due to rounding.

Table 4: Salford Royal ED: Total injury attendances by method of disposal and injury group (excluding other injury), April 2011 to March 2012

Disposal	Assault		Bites and stings		Burns and scalds		DSH		Fall		RTC		Sports injury		Total	
	n	%	n	%	n	%	n	%	n	%	n	%	n	%	n	%
Discharged	806	46	218	47	151	35	167	20	2438	39	692	56	655	52	5127	42
Follow-up/referral	482	28	181	39	219	51	198	23	1745	28	396	32	558	44	3779	31
Admitted	283	16	46	10	40	9	381	45	1864	30	88	7	40	3	2742	22
Other	179	10	23	5	22	5	101	12	185	3	49	4	13	1	572	5
Total	1750	100	468	100	432	100	847	100	6232	100	1225	100	1266	100	12220	100

*Percentages may not add to one hundred due to rounding.

² Please note that all numbers less than five have been suppressed in line with patient confidentiality and if there is only one number <5 in a category then two numbers will be suppressed at the next level.

Table 5: Salford Royal ED: Total injury attendances by arrival mode and month, April 2011 to March 2012

Arrival mode	Apr	May	Jun	Jul	Aug	Sep	Oct	Nov	Dec	Jan	Feb	Mar	Total	%
Other	1705	1746	1773	1988	1818	1985	1888	1666	1365	1620	1482	1909	20945	79
Ambulance	484	488	467	447	437	495	503	464	545	476	430	444	5680	21
Total	2189	2234	2240	2435	2255	2480	2391	2130	1910	2096	1912	2353	26625	100

Table 6: Salford Royal ED: Total injury attendances by location of incident and injury group (excluding other injury), April 2011 to March 2012*

Location	Assault		Bites and stings		Burns and scalds		DSH		Fall		RTC		Sports injury		Total	
	n	%	n	%	n	%	n	%	n	%	n	%	n	%	n	%
Other	995	57	397	85	147	34	819	97	2427	39	1190	97	1035	82	7010	57
Home	112	6	28	6	207	48	15	2	2111	34	***	***	***	***	2491	20
Public place	543	31	***	***	***	***	9	1	1324	21	28	2	103	8	2048	17
Educational establishment	36	2	***	***	***	***	***	***	241	4	***	***	107	8	397	3
Work	64	4	9	2	62	14	***	***	129	2	5	0	***	***	274	2
Total	1750	100	468	100	432	100	847	100	6232	100	1225	100	1266	100	12220	100

*Percentages may not add to one hundred due to rounding.

Table 7: Salford Royal ED: Total assault attendances by gender, arrival mode, location of incident and age group, April 2011 to March 2012*

Gender**	Assault attendees (n=1,750)		All injury attendees (n=26,625)
	n	%	%
Male	1216	69	55
Female	533	31	45
Arrival mode			
Ambulance	593	34	21
Other	1157	66	79
Location			
Other	995	57	57
Public place	543	31	17
Home	112	6	20
Work	64	4	2
Educational establishment	36	2	3
Age group			
0 - 4	11	0	9
5 - 19	391	22	23
20 - 34	800	46	26
35 - 49	408	23	18
50 - 64	118	7	11
65 plus	22	1	13

*Percentages may not add to 100 due to rounding. **Gender was not recorded in one assault case.

Author: Ian Warren, Published: May 2012

For further information please contact: Centre for Public Health, Research Directorate, Liverpool John Moores University, 2nd Floor, Henry Cotton Building, 15-21 Webster Street, Liverpool, L3 2ET, Tel: 0151 231 4513 or Email: i.j.warren@ljmu.ac.uk. Website: www.tiig.info (data requests should be made through the website)