



TIIG

INJURY SURVEILLANCE IN THE NORTH WEST OF ENGLAND

Injury attendances to Salford Royal Emergency Department

April 2012 to March 2013

This report summarises recorded injury attendances to Salford Royal Emergency Department (ED) between April 2012 and March 2013.

Between April 2012 and March 2013 there were 25,589 injury attendances to Salford Royal ED. Males accounted for over half (54%) of all injury attendances. The month with the highest injury attendances was May (n=2,524) with February having the lowest attendances (n=1,839) (**Figure 1**). The majority (55%) of attendances were recorded as other injury. Of the specified injury groups, falls accounted for the highest proportion (22%) followed by assault (6%) and road traffic collision (RTC) and sports injury (5%) (**Table 1**).

For all injuries the highest proportion of attendances were for persons aged 20-34 (26%) and 5-19 years (21%) (**Figure 2**). Over four in ten (43%) of fall attendees were aged 65 or over. Nearly half (46%) of assault attendees were aged 20-34. Over four in ten (43%) of RTC attendees were aged 20-34 (**Figure 3**).

Table 2 shows the ethnicity of injury attendees to Salford Royal ED. The large majority (89%) were white.

The disposal of a patient can give an indication of the severity of the injuries sustained. Half (50%) of attendees were discharged, over three in ten (31%) were referred and 16% were admitted (**Table 3**).

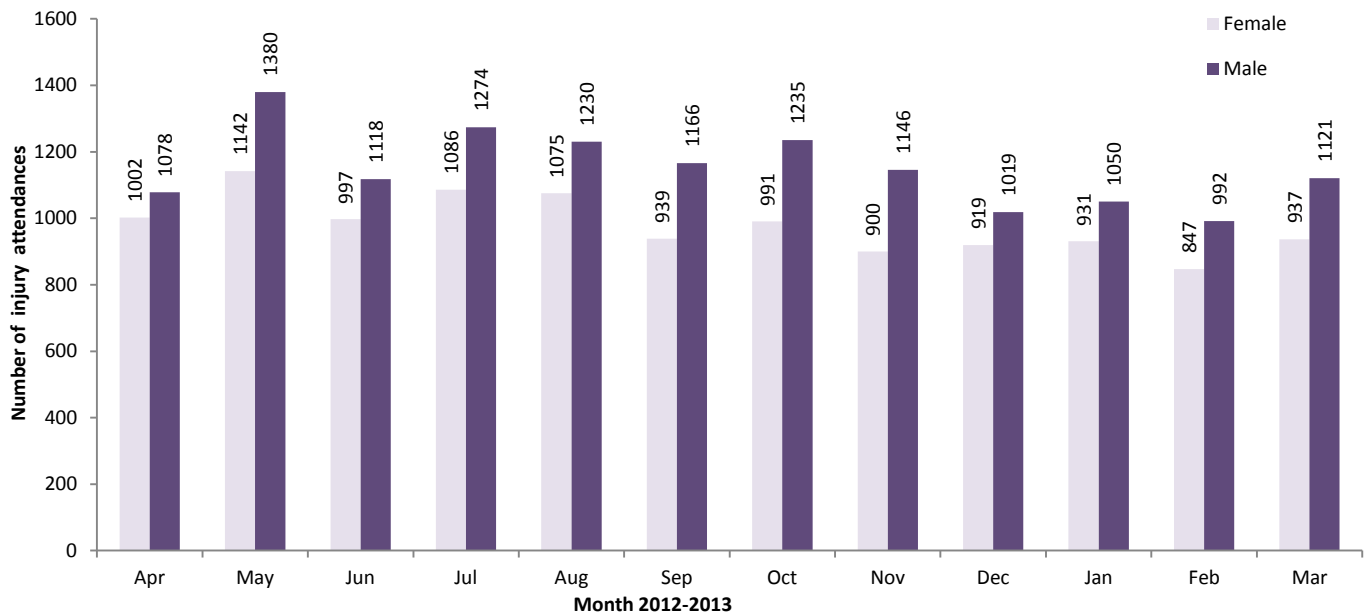
Almost three in ten (28%) of RTC attendees were referred while over a half (52%) of deliberate self-harm (DSH) attendees were admitted (**Table 4**).

Table 5 shows the arrival methods of attendances at Salford Royal ED. A fifth (20%) of attendees arrived by ambulance.

Table 6 shows the incident location of injury attendances to Salford Royal ED. Over six in ten (62%) of injury attendances were recorded as other, while 19% occurred at home and 10% in a public place.

Table 7 presents data for assault attendees to Salford Royal ED. The majority of attendees were male (70%) and three in ten (30%) arrived by ambulance.

Figure 1: Salford Royal ED: Total injury attendances by gender and month, April 2012 to March 2013*

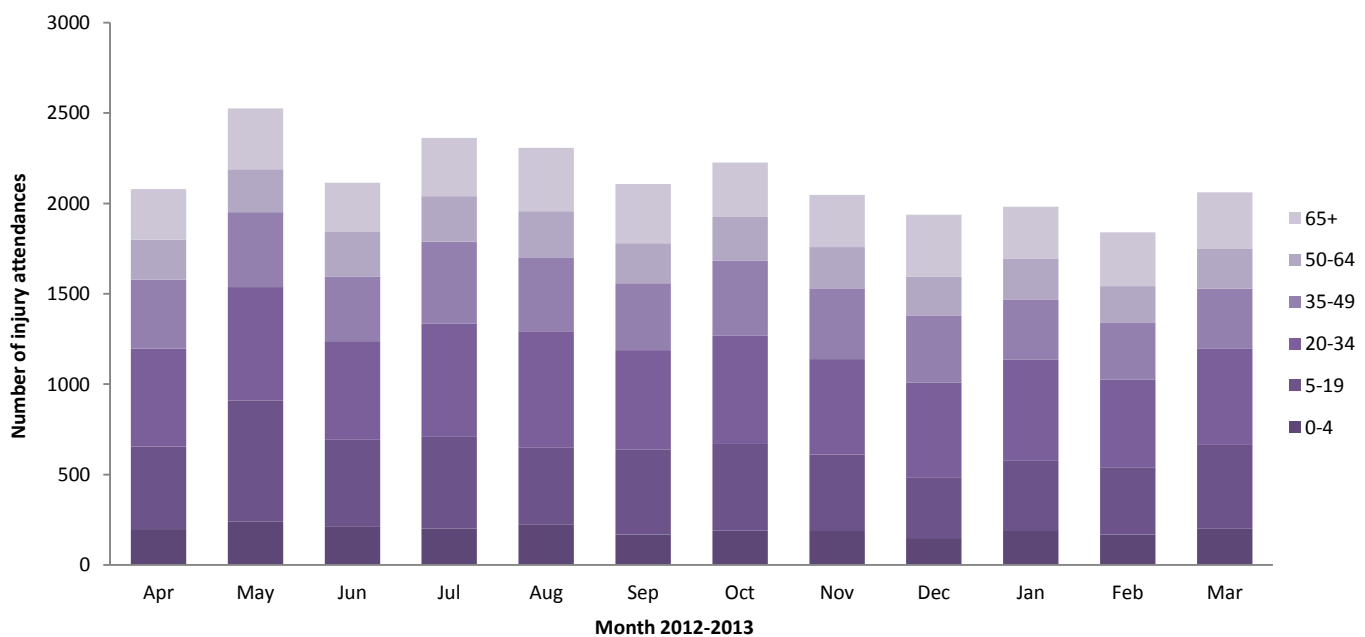


* Please note there were 14 attendances where gender was recorded as unknown.

Table 1: Salford Royal ED: Total injury attendances by injury group and month, April 2012 to March 2013¹

Injury group	Apr	May	Jun	Jul	Aug	Sep	Oct	Nov	Dec	Jan	Feb	Mar	Total	%
Other injury	1135	1323	1156	1340	1209	1161	1252	1187	1028	1091	986	1115	13983	55
Fall	480	583	466	514	496	454	442	390	500	474	429	458	5686	22
Assault	132	169	110	123	152	119	119	116	125	119	88	123	1495	6
RTC	115	119	108	83	91	110	137	140	121	130	104	94	1352	5
Sports injury	80	165	101	83	86	105	116	100	57	63	107	144	1207	5
DSH	79	72	86	94	88	78	95	63	62	56	74	78	925	4
Bites and stings	24	48	49	85	145	44	40	16	15	15	14	16	511	2
Burns and scalds	35	45	39	40	40	37	25	35	30	34	37	33	430	2
Total	2080	2524	2115	2362	2307	2108	2226	2047	1938	1982	1839	2061	25589	100

Figure 2: Salford Royal ED: Total injury attendances by age group and month, April 2012 to March 2013



¹ Firework injury has been included in other injury due to low numbers (n=4).

Figure 3: Salford Royal ED: Total injury attendances by age group and injury group (excluding other injury), April 2012 to March 2013

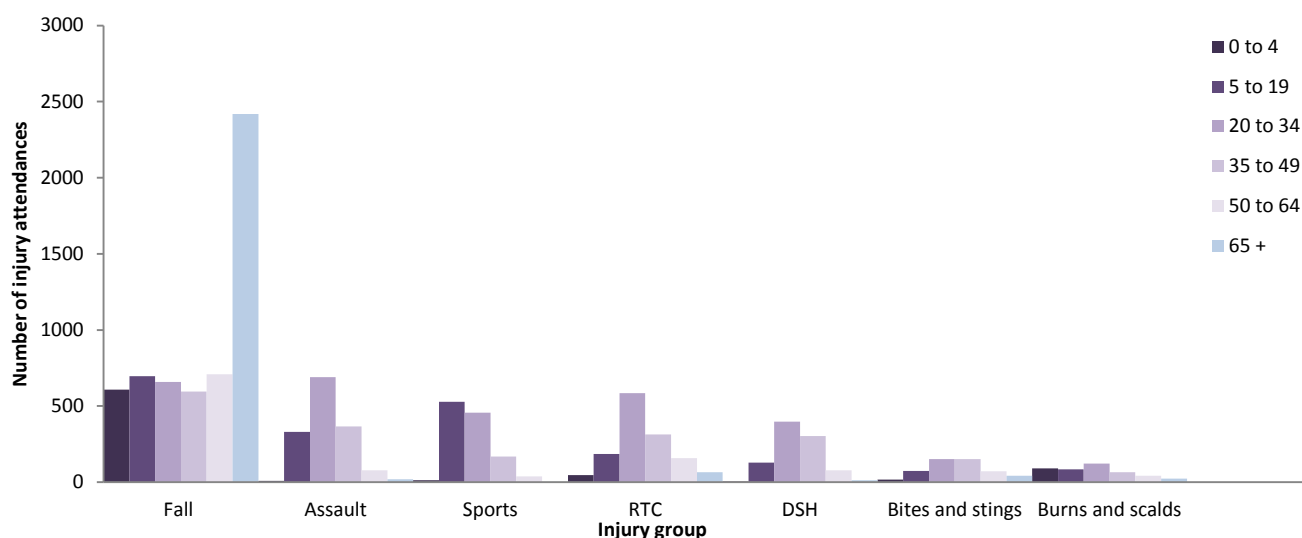


Table 2: Salford Royal ED: Total injury attendances by ethnicity and month, April 2012 to March 2013^{2,3}

Ethnicity	Apr	May	Jun	Jul	Aug	Sep	Oct	Nov	Dec	Jan	Feb	Mar	Total	%
White	1919	2333	1940	2179	2118	1958	2043	1851	1775	1817	1475	1477	22885	89
Not stated	28	31	30	46	32	20	33	31	40	33	249	470	1043	4
Any other ethnic group	50	38	41	47	52	35	45	49	37	39	43	29	505	2
Black	25	34	31	34	37	34	43	38	31	37	23	33	400	2
Mixed	14	33	24	19	28	20	13	32	18	16	16	21	254	1
Pakistani	11	16	12	12	12	12	11	15	7	11	5	10	134	1
Any other Asian background	13	15	10	8	16	11	10	10	7	11	11	9	131	1
Indian	10	11	14	8	7	8	12	10	14	7	12	6	119	0
Chinese	<10	8	8	<10	***	<10	10	<10	9	<10	***	<10	82	0
Bangladeshi	***	5	5	***	***	***	6	***	0	***	***	***	36	0
Total	2080	2524	2115	2362	2307	2108	2226	2047	1938	1982	1839	2061	25589	100

Table 3: Salford Royal ED: Total injury attendances by method of disposal and month, April 2012 to March 2013

Disposal	Apr	May	Jun	Jul	Aug	Sep	Oct	Nov	Dec	Jan	Feb	Mar	Total	%
Discharged	1013	1281	1079	1156	1126	1103	1154	1065	930	999	891	1031	12828	50
Referral/follow up	699	790	640	782	718	607	644	576	607	623	575	616	7877	31
Admitted	306	360	315	350	380	348	341	309	342	299	312	353	4015	16
Other	62	93	81	74	83	50	87	97	59	61	61	61	869	3
Total	2080	2524	2115	2362	2307	2108	2226	2047	1938	1982	1839	2061	25589	100

Table 4: Salford Royal ED: Total injury attendances by method of disposal and injury group (excluding other injury), April 2012 to March 2013

Disposal	Assault		Bites and stings		Burns and scalds		DSH		Fall		RTC		Sports injury		Total	
	n	%	n	%	n	%	n	%	n	%	n	%	n	%	n	%
Discharged	720	48	208	41	168	39	185	20	2319	41	804	59	577	48	4981	43
Referral/follow-up	455	30	225	44	201	47	187	20	1432	25	374	28	584	48	3458	30
Admitted	195	13	54	11	51	12	484	52	1799	32	132	10	33	3	2748	24
Other	125	8	24	5	10	2	69	7	136	2	42	3	13	1	419	4
Total	1495	100	511	100	430	100	925	100	5686	100	1352	100	1207	100	11606	100

Table 5: Salford Royal ED: Total injury attendances by arrival mode and month, April 2012 to March 2013

Arrival mode	Apr	May	Jun	Jul	Aug	Sep	Oct	Nov	Dec	Jan	Feb	Mar	Total	%
Other	1635	2032	1702	1909	1837	1687	1806	1650	1465	1557	1466	1645	20391	80
Brought in by Ambulance	445	492	413	453	470	421	420	397	473	425	373	416	5198	20
Total	2080	2524	2115	2362	2307	2108	2226	2047	1938	1982	1839	2061	25589	100

² Please note that all numbers less than five have been suppressed in line with patient confidentiality and if there is only one number <5 in a category then two numbers will be suppressed at the next level.

³ White = Irish, British, other white background; Mixed = white and black, white and Asian, mixed any other; Black = African, Caribbean, other black.

Table 6: Salford Royal ED: Total injury attendances by location of incident, April 2012 to March 2013

Location	Apr	May	Jun	Jul	Aug	Sep	Oct	Nov	Dec	Jan	Feb	Mar	Total	%
Other	1290	1504	1321	1432	1428	1262	1359	1297	1204	1212	1168	1327	15804	62
Home	401	453	406	465	468	405	380	352	400	385	344	365	4824	19
Public place	222	261	205	258	265	254	209	154	177	199	135	142	2481	10
Work	114	153	113	130	136	114	154	136	102	112	109	112	1485	6
Educational establishment	53	153	70	77	10	73	124	108	55	74	83	115	995	4
Total	2080	2524	2115	2362	2307	2108	2226	2047	1938	1982	1839	2061	25589	100

Table 7: Salford Royal ED: Total assault attendances by gender, arrival mode and age group, April 2012 to March 2013*

Gender	Assault attendees (n=1,495)		All injury attendees (n=25,589)
	N	%	%
Male	1040	70	54
Female	454	30	46
Arrival mode	N	%	%
Ambulance	447	30	20
Other	1048	70	80
Age group	N	%	%
0 - 4	9	1	9
5 - 19	518	35	21
20 - 34	500	33	26
35 - 49	370	25	18
50 - 64	78	5	11
65 plus	20	1	15

* Please note there was one assault attendance where gender was recorded as unknown.

Published August 2013

Jennifer Brizell (TIIG researcher)

Centre for Public Health, Faculty of Health and Applied Social Sciences, Liverpool John Moores University

2nd Floor, Henry Cotton Campus, 15-21 Webster Street, Liverpool, L3 2ET

Tel: 0151 231 4500 Email: j.s.brizell@ljmu.ac.uk

Website: www.tiig.info (please note all data requests should be made through the TIIG website)