



TIIG

INJURY SURVEILLANCE IN THE NORTH WEST OF ENGLAND

Injury attendances to Salford Royal Emergency Department

October 2012 to September 2013

This report summarises recorded injury attendances to Salford Royal Emergency Department (ED) between October 2012 and September 2013.

Between October 2012 and September 2013 there were 26,126 injury attendances to Salford Royal ED. Males accounted for over half (55%) of all injury attendances. The month with the highest injury attendances was July (n=2,533) with February having the lowest attendances (n=1,839) (**Figure 1**). The majority (57%) of attendances were recorded as other injury. Of the specified injury groups, falls accounted for the highest proportion (20%) followed by road traffic collision (RTC) (6%) and assaults and sports injury (both 5%) (**Table 1**).

For all injuries the highest proportion of attendances were for persons aged 20-34 (26%) and 5-19 years (21%) (**Figure 2**). Close to half (46%) of fall attendees were aged 65 or over and a similar number (46%) of assault attendees were aged 20-34. Over four in ten (42%) of RTC attendees were aged 20-34 (**Figure 3**).

Table 2 shows the ethnicity of injury attendees to Salford Royal ED. The large majority (85%) were white.

The disposal of a patient can give an indication of the severity of the injuries sustained. Almost half (49%) of attendees were discharged, over three in ten

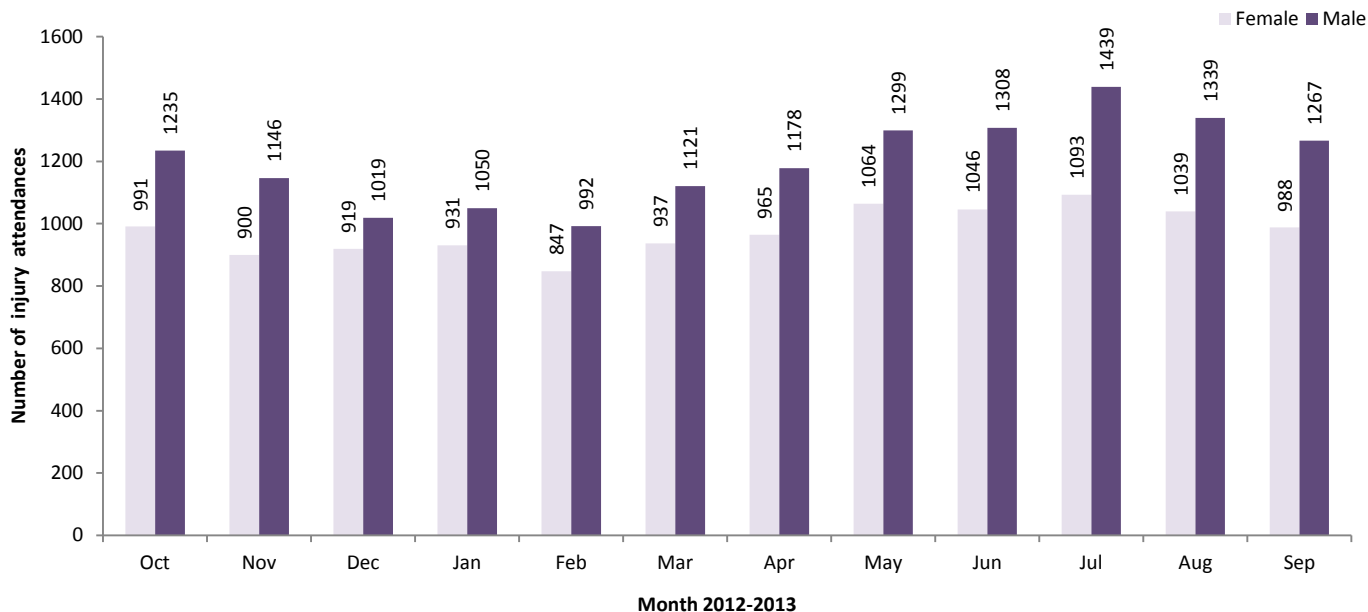
(31%) were referred and 17% were admitted (**Table 3**).

Table 4 shows the arrival methods of attendances at Salford Royal ED. Over a fifth (21%) of attendees arrived by ambulance.

Table 5 shows the incident location of injury attendances to Salford Royal ED. Almost two thirds (65%) of injury attendances were recorded as other, while 17% occurred at home and 8% in a public place.

Table 6 presents data for assault attendees to Salford Royal ED. The majority of attendees were male (74%), 46% were aged between 20 and 34 years and three in ten (30%) arrived by ambulance.

Figure 1: Salford Royal ED: Total injury attendances by gender and month, October 2012 to September 2013*



*Please note there were 13 attendances where gender was recorded as unknown.

Table 1: Salford Royal ED: Total injury attendances by injury group and month, October 2012 to September 2013

Injury group	Oct	Nov	Dec	Jan	Feb	Mar	Apr	May	Jun	Jul	Aug	Sep	Total	%
Other injury	1252	1187	1028	1091	986	1115	1243	1353	1398	1512	1340	1336	14841	57
Fall	442	390	500	474	429	458	438	484	435	440	434	415	5339	20
RTC	137	140	121	130	104	94	95	133	113	101	140	133	1441	6
Assault	119	116	125	119	88	123	113	109	101	118	149	128	1408	5
Sports injury	116	100	57	63	107	144	127	141	147	126	100	104	1332	5
DSH [^]	95	63	62	56	74	78	67	78	75	78	90	73	889	3
Bites and stings	40	16	15	15	14	16	25	36	54	107	87	35	460	2
Burns and scalds	25	35	30	34	37	33	36	34	32	51	38	31	416	2
Total	2226	2047	1938	1982	1839	2061	2144	2368	2355	2533	2378	2255	26126	100

[^]DSH=Deliberate self-harm

Figure 2: Salford Royal ED: Total injury attendances by age group and month, October 2012 to September 2013

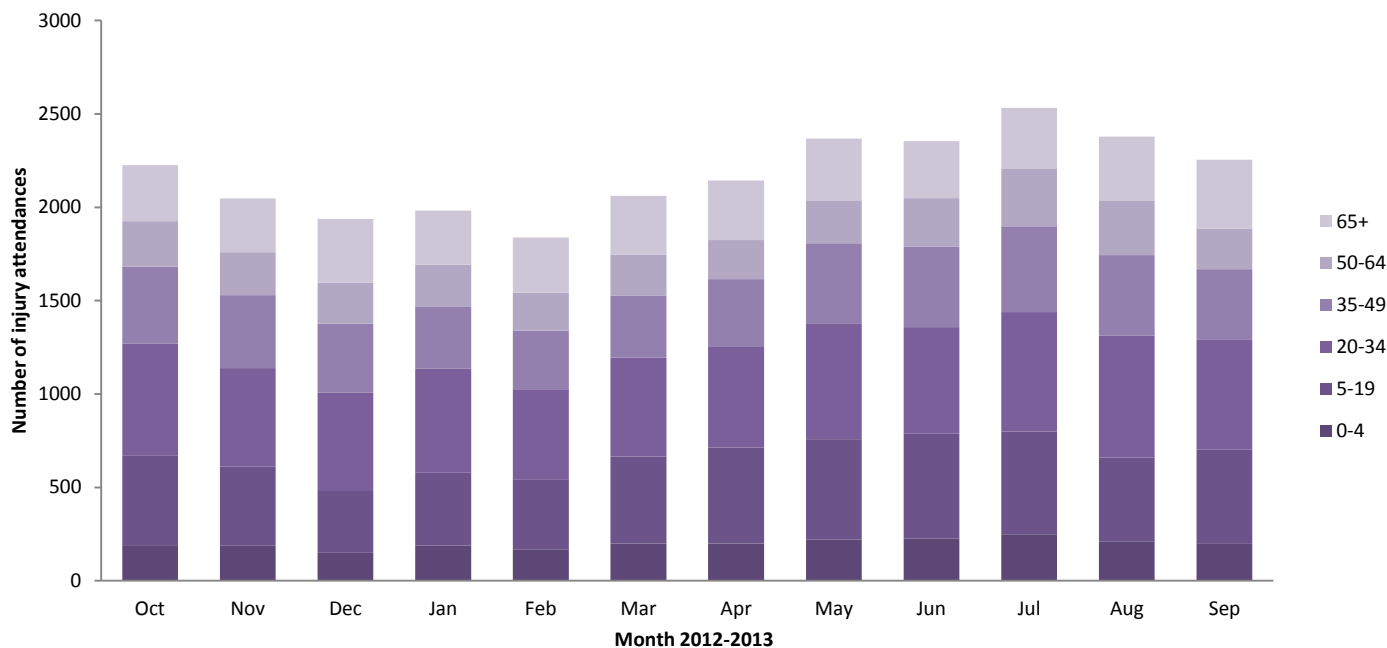


Figure 3: Salford Royal ED: Total injury attendances by age group and injury group (excluding other injury), October 2012 to September 2013

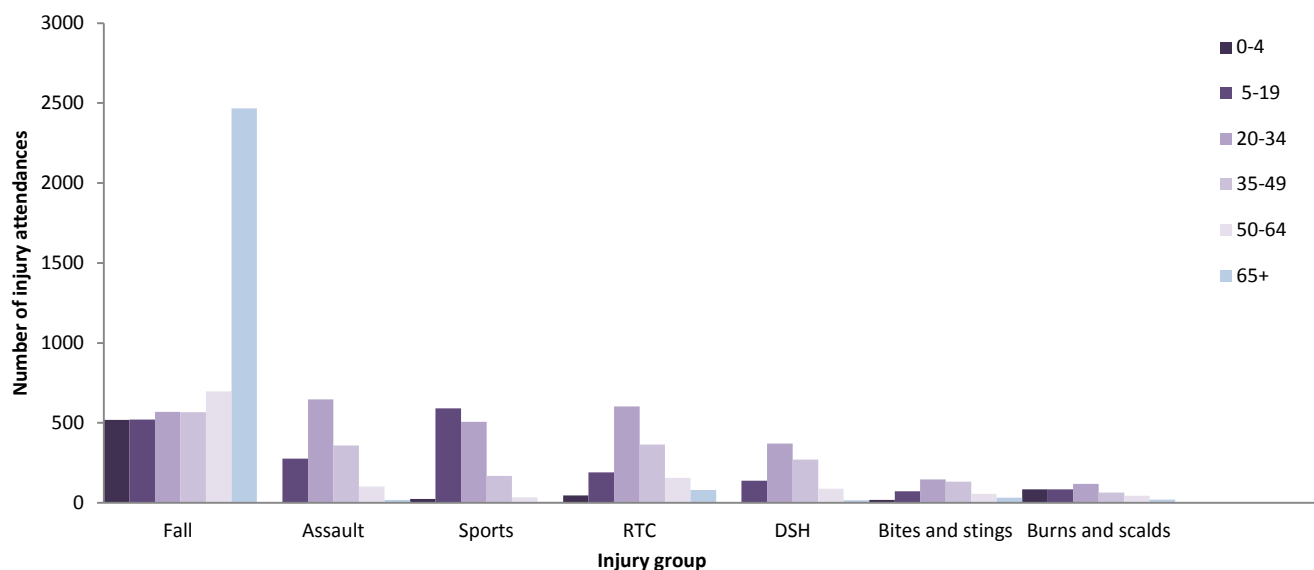


Table 2: Salford Royal ED: Total injury attendances by ethnicity and month, October 2012 to September 2013^{1,2}

Ethnicity	Oct	Nov	Dec	Jan	Feb	Mar	Apr	May	Jun	Jul	Aug	Sep	Total	%
White	2043	1851	1775	1817	1475	1477	1715	1899	1917	2126	2050	1968	22113	85
Not stated	33	31	40	33	249	470	325	315	295	255	173	139	2358	9
Any other ethnic group	45	49	37	39	43	29	37	53	49	52	57	45	535	2
Black	43	38	31	37	23	33	21	33	41	30	38	33	401	2
Mixed	13	32	18	16	16	21	16	18	18	23	20	19	230	1
Pakistani	11	15	7	11	5	10	12	13	12	14	15	8	133	1
Any other Asian background	10	10	7	11	11	9	6	17	7	12	12	16	128	0
Indian	12	10	14	7	12	6	***	<10	<10	6	***	12	97	0
Chinese	10	<10	9	<10	***	<6	7	12	6	9	7	10	93	0
Bangladeshi	6	***	0	***	***	***	***	***	***	6	***	5	38	0
Total	2226	2047	1938	1982	1839	2061	2144	2368	2355	2533	2378	2255	26126	100

Table 3: Salford Royal ED: Total injury attendances by method of disposal and month, October 2012 to September 2013

Disposal	Oct	Nov	Dec	Jan	Feb	Mar	Apr	May	Jun	Jul	Aug	Sep	Total	%
Discharged	1154	1065	930	999	891	1031	1022	1173	1127	1224	1151	1055	12822	49
Referral/follow up	644	576	607	623	575	616	680	736	768	800	709	714	8048	31
Admitted	341	309	342	299	312	353	367	396	391	435	445	419	4409	17
Other	87	97	59	61	61	61	75	63	69	74	73	67	847	3
Total	2226	2047	1938	1982	1839	2061	2144	2368	2355	2533	2378	2255	26126	100

Table 4: Salford Royal ED: Total injury attendances by arrival mode and month, October 2012 to September 2013

Arrival mode	Oct	Nov	Dec	Jan	Feb	Mar	Apr	May	Jun	Jul	Aug	Sep	Total	%
Other	1806	1650	1465	1557	1466	1645	1691	1885	1907	2050	1881	1765	20768	79
Brought in by ambulance	420	397	473	425	373	416	453	483	448	483	497	490	5358	21
Total	2226	2047	1938	1982	1839	2061	2144	2368	2355	2533	2378	2255	26126	100

Table 5: Salford Royal ED: Total injury attendances by location of incident, October 2012 to September 2013

Location	Oct	Nov	Dec	Jan	Feb	Mar	Apr	May	Jun	Jul	Aug	Sep	Total	%
Other	1359	1297	1204	1212	1168	1327	1410	1516	1603	1700	1650	1510	16956	65
Home	380	352	400	385	344	365	361	415	361	424	391	359	4537	17
Public place	209	154	177	199	135	142	155	192	172	194	205	186	2120	8
Work	154	136	102	112	109	112	108	128	125	139	126	114	1465	6
Educational establishment	124	108	55	74	83	115	110	117	94	76	6	86	1048	4
Total	2226	2047	1938	1982	1839	2061	2144	2368	2355	2533	2378	2255	26126	100

¹ Please note that all numbers less than five have been suppressed in line with patient confidentiality and if there is only one number <5 in a category then two numbers will be suppressed at the next level.

² White = Irish, British, other white background; Mixed = white and black, white and Asian, mixed any other; Black = African, Caribbean, other black.

Table 6: Salford Royal ED: Total assault attendances by gender, arrival mode and age group, October 2012 to September 2013*

	Assault attendees (n=1,408)		All injury attendees (n=26,126)
	N	%	%
Gender			
Male	1037	74	55
Female	369	26	45
Arrival mode			
Ambulance	416	30	21
Other	992	70	79
Age group			
0 - 4	5	0	9
5 - 19	277	20	21
20 - 34	647	46	26
35 - 49	358	25	18
50 - 64	103	7	11
65 plus	18	1	15

* Please note there were two assault attendances where gender was recorded as unknown.