



# TIIG

INJURY SURVEILLANCE IN THE NORTH WEST OF ENGLAND

## STEPPING HILL HOSPITAL EMERGENCY DEPARTMENT

### MONTHLY BULLETIN: OCTOBER 2013 TO SEPTEMBER 2014

This bulletin provides a breakdown of all injury attendances to Stepping Hill Hospital Emergency Department (ED) between October 2013 and September 2014.

During this twelve month period there were 34,743 injury attendances to the ED. The month with the highest number of attendances, calculated as a daily average, was July (112 per day) with March having the lowest attendances (78 per day; **Figure 1**).

Males accounted for over half (53%) of all attendances (**Figure 1**). The largest proportions of attendances were for those aged between five and 19 years (25%) and between 20 and 34 years (21%) (**Figure 2**).

The majority (61%) of attendances did not have a specific injury group recorded. Of the specified injury groups, falls accounted for the highest proportion (14%), followed by sports injury (12%), road traffic collisions (RTCs; 6%) and assault (3%; **Table 1**).

Over half (54%) of fall attendees were aged 65 years or over, close to half (48%) of assault attendees were aged between 20 and 34 years and almost four in ten (38%) RTC attendees were aged between 20 and 34 years (**Figure 3**).

Of those that stated an ethnicity, the majority (88%) were White (**Table 2**).

The disposal of a patient can give an indication of the severity of the injuries sustained. Almost six in ten (58%) attendees were discharged, close to three in ten (28%) were referred for further treatment and 14% were admitted to hospital (**Table 3**).

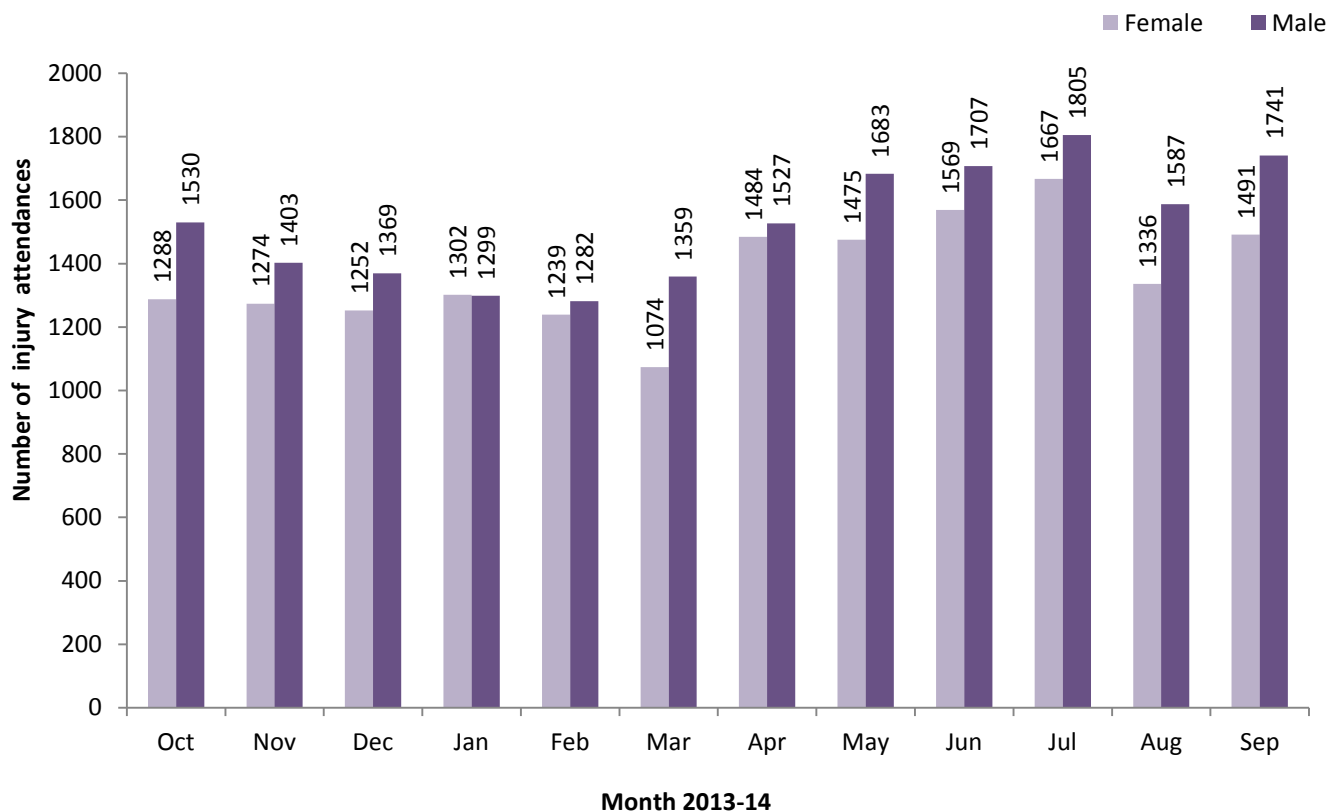
**Table 4** shows the arrival method of attendees to Stepping Hill ED. Over seven in ten (72%) arrived by car and 19% by ambulance.

#### **Assault attendances**

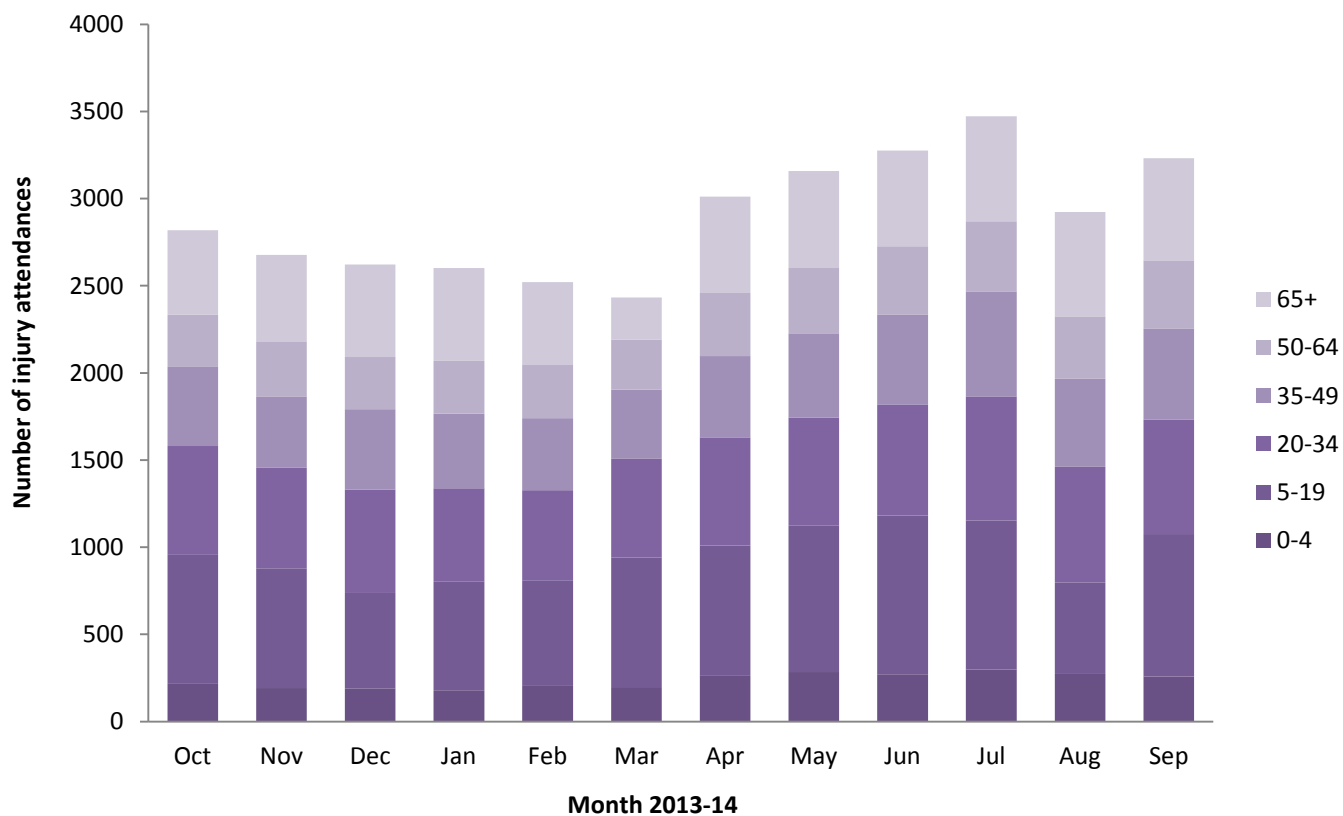
Between October 2013 and September 2014 there were 1,034 assault-related injury attendances to Stepping Hill Hospital ED.

The majority (69%) of attendees were male and 48% were aged between 20 and 34 years. Over a third (36%) of assault attendances arrived by ambulance (**Table 5**).

**Figure 1: ED injury attendances by gender and month, October 2013 to September 2014**



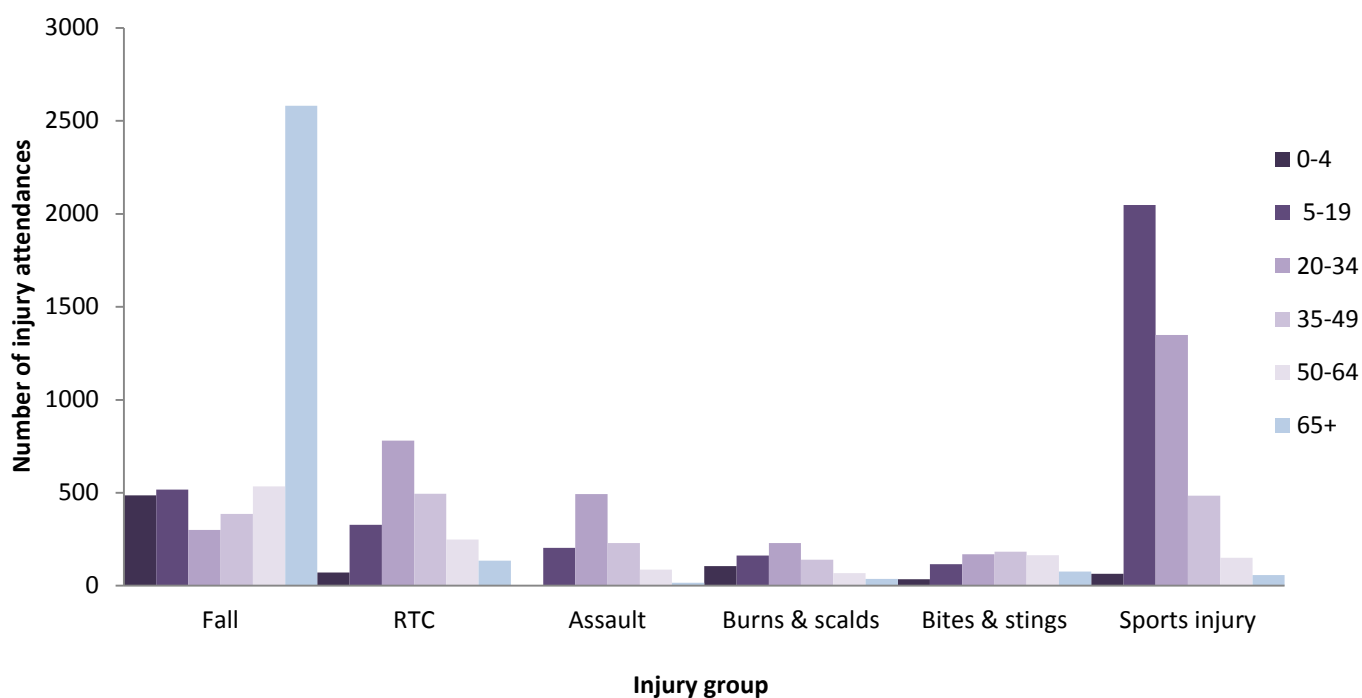
**Figure 2: ED injury attendances by age group and month, October 2013 to September 2014**



**Table 1: ED injury attendances by injury group and month, October 2013 to September 2014**

| Injury group   | Oct         | Nov         | Dec         | Jan         | Feb         | Mar         | Apr         | May         | Jun         | Jul         | Aug         | Sep         | Total        | %          |
|----------------|-------------|-------------|-------------|-------------|-------------|-------------|-------------|-------------|-------------|-------------|-------------|-------------|--------------|------------|
| Other injury   | 1678        | 1533        | 1568        | 1556        | 1469        | 1643        | 1763        | 1982        | 2036        | 2209        | 1894        | 1874        | 21205        | 61         |
| Fall           | 384         | 451         | 415         | 451         | 437         | 20          | 468         | 449         | 470         | 432         | 322         | 508         | 4807         | 14         |
| Sports injury  | 348         | 314         | 260         | 281         | 259         | 414         | 408         | 367         | 395         | 379         | 290         | 437         | 4152         | 12         |
| RTC            | 192         | 178         | 174         | 150         | 163         | 176         | 192         | 145         | 143         | 166         | 192         | 184         | 2055         | 6          |
| Assault        | 118         | 95          | 103         | 82          | 93          | 72          | 77          | 68          | 86          | 74          | 68          | 98          | 1034         | 3          |
| Burns & scalds | 55          | 58          | 58          | 52          | 58          | 61          | 52          | 71          | 71          | 72          | 73          | 64          | 745          | 2          |
| Bites & stings | 43          | 48          | 43          | 29          | 42          | 47          | 51          | 76          | 75          | 140         | 84          | 67          | 745          | 2          |
| <b>Total</b>   | <b>2818</b> | <b>2677</b> | <b>2621</b> | <b>2601</b> | <b>2521</b> | <b>2433</b> | <b>3011</b> | <b>3158</b> | <b>3276</b> | <b>3472</b> | <b>2923</b> | <b>3232</b> | <b>34743</b> | <b>100</b> |

**Figure 3: ED injury attendances by age group and injury group, October 2013 to September 2014**



**Table 2: ED injury attendances by ethnicity and month, October 2013 to September 2014<sup>1,2</sup>**

| Ethnicity              | Oct         | Nov         | Dec         | Jan         | Feb         | Mar         | Apr         | May         | Jun         | Jul         | Aug         | Sep         | Total        | %          |
|------------------------|-------------|-------------|-------------|-------------|-------------|-------------|-------------|-------------|-------------|-------------|-------------|-------------|--------------|------------|
| White                  | 2426        | 2315        | 2286        | 2284        | 2222        | 2150        | 2704        | 2846        | 2918        | 3047        | 2557        | 2886        | 30641        | 88         |
| Not stated             | 325         | 280         | 252         | 235         | 229         | 227         | 231         | 228         | 267         | 328         | 281         | 272         | 3155         | 9          |
| Mixed                  | 20          | 15          | 19          | 11          | 24          | 16          | 17          | 25          | 23          | 19          | 28          | 12          | 229          | 1          |
| Pakistani              | 13          | 17          | 16          | 26          | 16          | 11          | 21          | 17          | 16          | 26          | 17          | 17          | 213          | 1          |
| Any other ethnic group | 6           | 13          | 19          | 9           | 9           | 9           | 10          | 7           | 6           | 9           | 13          | 8           | 118          | 0          |
| Black                  | 7           | 13          | <10         | <10         | ***         | 7           | 12          | 10          | 12          | 11          | 8           | 13          | 110          | 0          |
| Any other Asian        | 6           | 7           | 11          | 11          | 10          | ***         | 5           | 11          | 12          | <15         | 6           | 13          | 105          | 0          |
| Indian                 | 7           | 9           | 9           | 10          | ***         | ***         | ***         | 8           | 17          | 15          | 8           | 6           | 98           | 0          |
| Chinese                | <10         | <10         | 0           | 7           | 5           | 6           | 7           | ***         | ***         | 6           | ***         | ***         | 56           | 0          |
| Bangladeshi            | ***         | ***         | ***         | ***         | 0           | 0           | ***         | ***         | ***         | ***         | ***         | ***         | 18           | 0          |
| <b>Total</b>           | <b>2818</b> | <b>2677</b> | <b>2621</b> | <b>2601</b> | <b>2521</b> | <b>2433</b> | <b>3011</b> | <b>3158</b> | <b>3276</b> | <b>3472</b> | <b>2923</b> | <b>3232</b> | <b>34743</b> | <b>100</b> |

<sup>1</sup> Please note that for all tables, all numbers less than five have been suppressed (with \*\*\*) in line with patient confidentiality. If there is only one number less than five in a category then two numbers will be suppressed to prevent back calculation from totals.

<sup>2</sup> White = Irish, British, other White background; Mixed = White and Black, White and Asian, mixed - any other; Black = African, Caribbean, other Black.

**Table 3: ED injury attendances by disposal method and month, October 2013 to September 2014**

| Disposal method    | Oct         | Nov         | Dec         | Jan         | Feb         | Mar         | Apr         | May         | Jun         | Jul         | Aug         | Sep         | Total        | %          |
|--------------------|-------------|-------------|-------------|-------------|-------------|-------------|-------------|-------------|-------------|-------------|-------------|-------------|--------------|------------|
| Discharged         | 1669        | 1504        | 1457        | 1486        | 1436        | 1500        | 1766        | 1783        | 1845        | 2030        | 1678        | 1859        | 20013        | 58         |
| Referral/follow-up | 760         | 767         | 724         | 699         | 707         | 678         | 790         | 875         | 950         | 938         | 804         | 918         | 9610         | 28         |
| Admitted           | 362         | 370         | 418         | 392         | 362         | 246         | 431         | 462         | 437         | 478         | 411         | 438         | 4807         | 14         |
| Other              | 27          | 36          | 22          | 24          | 16          | 9           | 24          | 38          | 44          | 26          | 30          | 17          | 313          | 1          |
| <b>Total</b>       | <b>2818</b> | <b>2677</b> | <b>2621</b> | <b>2601</b> | <b>2521</b> | <b>2433</b> | <b>3011</b> | <b>3158</b> | <b>3276</b> | <b>3472</b> | <b>2923</b> | <b>3232</b> | <b>34743</b> | <b>100</b> |

**Table 4: ED injury attendances by arrival mode and month, October 2013 to September 2014<sup>1</sup>**

| Arrival mode     | Oct         | Nov         | Dec         | Jan         | Feb         | Mar         | Apr         | May         | Jun         | Jul         | Aug         | Sep         | Total        | %          |
|------------------|-------------|-------------|-------------|-------------|-------------|-------------|-------------|-------------|-------------|-------------|-------------|-------------|--------------|------------|
| Car              | 1965        | 1886        | 1788        | 1796        | 1751        | 1870        | 2221        | 2282        | 2399        | 2578        | 2006        | 2308        | 24850        | 72         |
| Ambulance        | 526         | 516         | 574         | 582         | 509         | 279         | 541         | 567         | 551         | 562         | 619         | 641         | 6467         | 19         |
| Bus              | 96          | 83          | 77          | 63          | 82          | 110         | 71          | 101         | 112         | 87          | 84          | 79          | 1045         | 3          |
| Taxi             | 97          | 87          | 94          | 68          | 78          | 77          | 65          | 83          | 97          | 94          | 91          | 78          | 1009         | 3          |
| Walked           | 85          | 60          | 54          | 50          | 62          | 63          | 55          | 57          | 68          | 96          | 68          | 64          | 782          | 2          |
| Other            | 21          | 19          | 16          | 27          | 14          | 15          | 22          | 29          | 18          | 20          | 18          | 17          | 236          | 1          |
| Police           | 16          | 20          | <15         | <10         | 13          | 11          | 10          | 13          | 13          | <15         | 18          | 15          | 164          | 0          |
| Public transport | 6           | 6           | ***         | 7           | <15         | <10         | 19          | 21          | <15         | 18          | <20         | 23          | 151          | 0          |
| Bicycle          | 6           | 0           | 0           | ***         | ***         | ***         | 7           | 5           | ***         | ***         | ***         | 7           | 39           | 0          |
| <b>Total</b>     | <b>2818</b> | <b>2677</b> | <b>2621</b> | <b>2601</b> | <b>2521</b> | <b>2433</b> | <b>3011</b> | <b>3158</b> | <b>3276</b> | <b>3472</b> | <b>2923</b> | <b>3232</b> | <b>34743</b> | <b>100</b> |

## ASSAULTS

**Table 5: ED assault attendances by gender, arrival mode and age group, October 2013 to September 2014<sup>1</sup>**

|                     | Assault attendances (n=1,034) |    | All injury attendances (n=34,743) |
|---------------------|-------------------------------|----|-----------------------------------|
|                     | n                             | %  | %                                 |
| <b>Gender</b>       |                               |    |                                   |
| Male                | 711                           | 69 | 53                                |
| Female              | 323                           | 31 | 47                                |
| <b>Arrival mode</b> |                               |    |                                   |
| Ambulance           | 374                           | 36 | 19                                |
| Other               | 659                           | 64 | 81                                |
| <b>Age group</b>    |                               |    |                                   |
| 0 - 4               | ***                           | 0  | 8                                 |
| 5 - 19              | 204                           | 20 | 25                                |
| 20 - 34             | 493                           | 48 | 21                                |
| 35 - 49             | 230                           | 22 | 16                                |
| 50 - 64             | 86                            | 8  | 12                                |
| 65 plus             | <20                           | 2  | 18                                |