

Injury attendances to Stepping Hill Emergency Department

January to December 2009

This report summarises recorded injury attendances to Stepping Hill Emergency Department (ED) between January and December 2009.

Between January and December 2009 there were 37,787 injury attendances to Stepping Hill ED. Males accounted for over half of all attendances (n=21,027; 56%). The month with the highest injury attendances was May (n=3,467) with February having the lowest attendances (n=2,656) (**Figure 1**). The majority of attendances did not have a specific injury group recorded (67%). Of the specified injury groups, sports injuries accounted for the highest proportion (8%) followed by road traffic collision (RTC) (6%) and assault (3%) (**Table 1**).

For all injuries, the highest proportion of attendances were for persons aged 5-19 (26%) and 20-34 (22%) (**Figure 2**). Half (50%) of fall attendees were aged 65 or over. Nearly half (49%) of assault attendees were aged 20-34. Almost four in ten (39%) of RTC attendees were aged 20-34. Half (50%) of all sports injury attendees were aged 5-19 (**Figure 3**).

The majority of attendees (n=32,471; 86%) were white. Of the remaining attendees the large majority were recorded as not known (n=4,691; 12%).

The disposal of a patient can give an indication of the severity of the injuries sustained. Over half (59%) of attendees were discharged, more than a quarter (27%) were referred, and 10% were admitted (**Table 2**).

Table 3 shows the arrival methods of attendees at Stepping Hill ED. Three-quarters (75%) arrived by car and 17% by ambulance.

Table 4 shows the day of the week which injury attendees arrived at the hospital. The highest attendances were on Sundays (n=5,842; 15%) and Mondays (n=6,174; 16%). Attendances were lowest on Fridays (n=4,897; 13%). Over four in ten (43%) of assault attendees arrived on Saturdays or Sundays.

Figure 4 (a-d) shows crude rates of attendance at Stepping Hill ED by attendee's area of residence, in this case Middle Super Output Area (MSOA). The MSOAs with the highest crude rates are indicated beneath each figure.¹

¹ Population figures are drawn from mid-2008 population estimates from the Office for National Statistics.

Figure 1: Stepping Hill ED: Total injury attendances by gender and month, January to December 2009

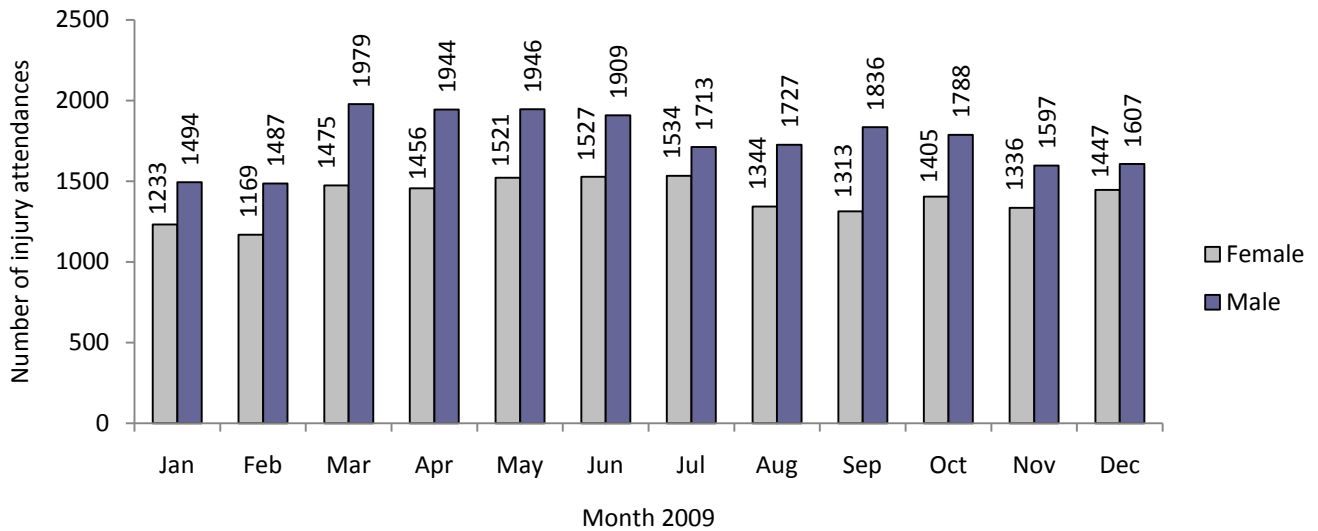


Table 1: Stepping Hill ED: Total injury attendances by injury group and month, January to December 2009

| Injury group | Jan | Feb | Mar | Apr | May | Jun | Jul | Aug | Sep | Oct | Nov | Dec | Total | % |
|----------------|-------------|-------------|-------------|-------------|-------------|-------------|-------------|-------------|-------------|-------------|-------------|-------------|--------------|------------|
| Other injury | 1820 | 1727 | 2343 | 2404 | 2407 | 2367 | 2190 | 2060 | 2025 | 2054 | 1964 | 1978 | 25339 | 67 |
| Falls | 356 | 361 | 345 | 318 | 391 | 401 | 330 | 333 | 327 | 356 | 301 | 531 | 4350 | 12 |
| Sports injury | 204 | 230 | 365 | 288 | 237 | 233 | 253 | 235 | 362 | 360 | 274 | 152 | 3193 | 8 |
| RTC | 187 | 176 | 224 | 187 | 201 | 170 | 203 | 177 | 206 | 214 | 219 | 225 | 2389 | 6 |
| Assault | 86 | 91 | 101 | 105 | 125 | 118 | 107 | 91 | 85 | 92 | 94 | 97 | 1192 | 3 |
| Bites & stings | 33 | 35 | 39 | 56 | 55 | 87 | 129 | 124 | 106 | 62 | 41 | 29 | 796 | 2 |
| Burns & scalds | 41 | 36 | 37 | 42 | 51 | 60 | 35 | 51 | 38 | 55 | 40 | 42 | 528 | 1 |
| Total | 2727 | 2656 | 3454 | 3400 | 3467 | 3436 | 3247 | 3071 | 3149 | 3193 | 2933 | 3054 | 37787 | 100 |

Figure 2: Stepping Hill ED: Total injury attendances by age group and month, January to December 2009

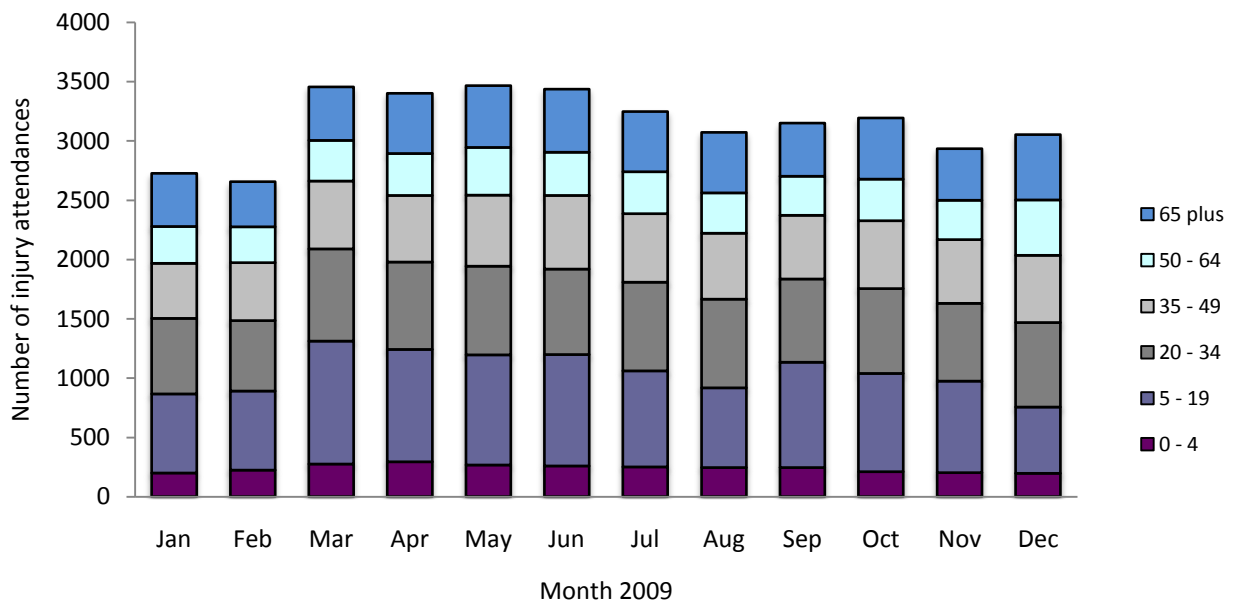


Figure 3: Stepping Hill ED: Total injury attendances by age group and injury group, January to December 2009

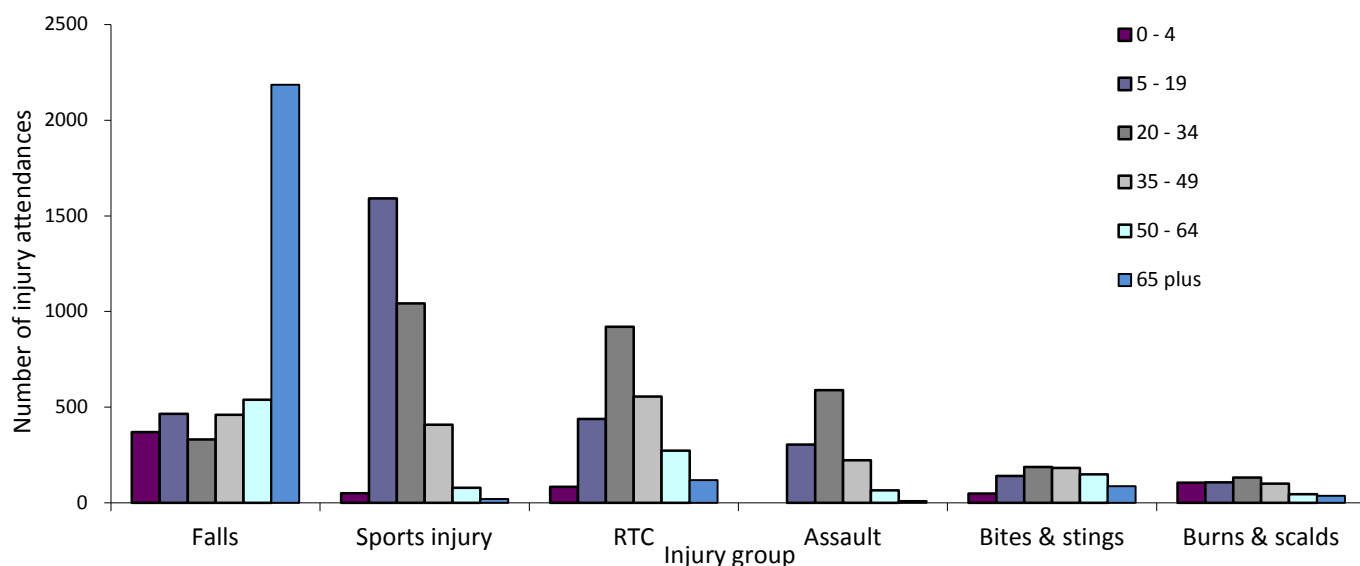


Table 3: Stepping Hill ED: Total injury attendances by method of disposal and month, January to December 2009

| Disposal | Jan | Feb | Mar | Apr | May | Jun | Jul | Aug | Sep | Oct | Nov | Dec | Total | % |
|--------------|-------------|-------------|-------------|-------------|-------------|-------------|-------------|-------------|-------------|-------------|-------------|-------------|--------------|------------|
| Discharged | 1569 | 1600 | 2117 | 1978 | 2037 | 2057 | 1961 | 1813 | 1890 | 1890 | 1742 | 1671 | 22325 | 59 |
| Referred | 789 | 652 | 876 | 974 | 927 | 862 | 862 | 803 | 826 | 835 | 761 | 871 | 10038 | 27 |
| Admitted | 248 | 272 | 313 | 304 | 347 | 294 | 259 | 304 | 276 | 331 | 285 | 382 | 3615 | 10 |
| Other | 121 | 132 | 148 | 144 | 156 | 223 | 165 | 151 | 157 | 137 | 145 | 130 | 1809 | 5 |
| Total | 2727 | 2656 | 3454 | 3400 | 3467 | 3436 | 3247 | 3071 | 3149 | 3193 | 2933 | 3054 | 37787 | 100 |

Table 4: Stepping Hill ED: Total injury attendances by mode of arrival and month, January to December 2009

| Mode | Jan | Feb | Mar | Apr | May | Jun | Jul | Aug | Sep | Oct | Nov | Dec | Jan | % |
|------------------|-------------|-------------|-------------|-------------|-------------|-------------|-------------|-------------|-------------|-------------|-------------|-------------|--------------|------------|
| Car | 2005 | 2005 | 2622 | 2573 | 2601 | 2611 | 2434 | 2327 | 2387 | 2354 | 2187 | 2187 | 28293 | 75 |
| Ambulance | 486 | 449 | 520 | 568 | 594 | 562 | 529 | 520 | 520 | 573 | 479 | 593 | 6393 | 17 |
| Bus | 80 | 68 | 114 | 97 | 87 | 102 | 102 | 74 | 81 | 87 | 97 | 82 | 1071 | 3 |
| Taxi | 64 | 74 | 93 | 77 | 77 | 60 | 86 | 73 | 82 | 72 | 82 | 100 | 940 | 2 |
| Walked | 67 | 40 | 87 | 65 | 78 | 78 | 71 | 54 | 62 | 90 | 57 | 73 | 822 | 2 |
| Other | 12 | 11 | 10 | 9 | 14 | 9 | 13 | 11 | 10 | *** | 13 | *** | 122 | 0 |
| Police vehicle | 8 | 9 | 8 | *** | 13 | 11 | 8 | *** | 6 | 11 | 12 | 11 | 108 | 0 |
| Bicycle | *** | *** | *** | *** | *** | *** | *** | 8 | *** | *** | *** | *** | 28 | 0 |
| Public transport | *** | *** | *** | *** | *** | *** | *** | *** | *** | *** | *** | *** | 10 | 0 |
| Total | 2727 | 2656 | 3454 | 3400 | 3467 | 3436 | 3247 | 3071 | 3149 | 3193 | 2933 | 3054 | 37787 | 100 |

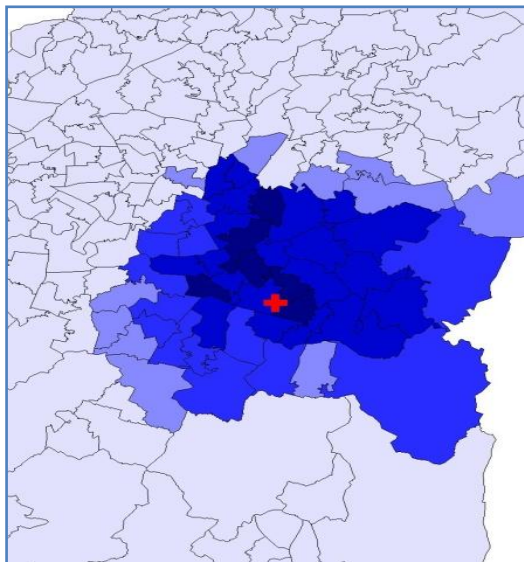
Table 5: Stepping Hill ED: Total injury attendances by day and injury group, January to December 2009

| Day | Assault | Bites & stings | Burns & scalds | Falls | Other injury | RTC | Sports injury | Total | % |
|--------------|-------------|----------------|----------------|-------------|--------------|-------------|---------------|--------------|------------|
| Sunday | 259 | 142 | 96 | 664 | 3739 | 281 | 661 | 5842 | 15 |
| Monday | 168 | 108 | 89 | 681 | 4210 | 358 | 560 | 6174 | 16 |
| Tuesday | 108 | 114 | 75 | 601 | 3732 | 401 | 404 | 5435 | 14 |
| Wednesday | 108 | 101 | 72 | 523 | 3469 | 358 | 421 | 5052 | 13 |
| Thursday | 147 | 103 | 48 | 535 | 3649 | 354 | 425 | 5261 | 14 |
| Friday | 146 | 85 | 65 | 672 | 3292 | 322 | 315 | 4897 | 13 |
| Saturday | 256 | 143 | 83 | 674 | 3248 | 315 | 407 | 5126 | 14 |
| Total | 1192 | 796 | 528 | 4350 | 25339 | 2389 | 3193 | 37787 | 100 |

Figure 4a,b,c,d: Middle Super Output Area of residence for injury attendances to Stepping Hill ED. Quintiles of crude rates per 1,000 population, January to December 2009

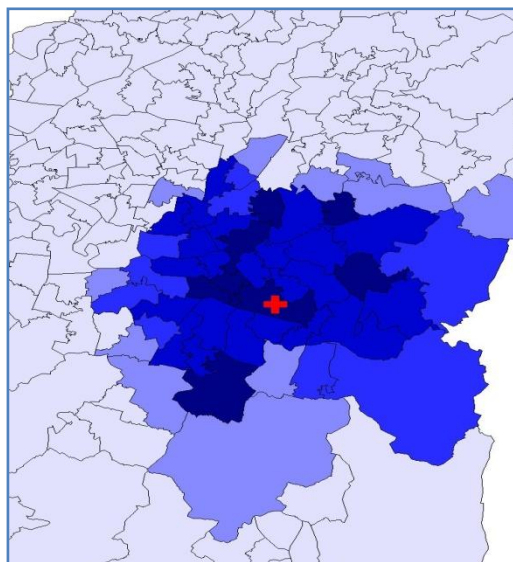
a) All injury attendances: quintiles of crude rates per 1,000 population b) Fall: quintiles of crude rates per 1,000 population

⊕ Stepping Hill ED



| | | |
|--|---------------------|-------------------------|
| | 1 (0.00 – 17.81) | MSOA E02001200 (329.69) |
| | 2 (17.82 – 74.97) | MSOA E02001190 (327.19) |
| | 3 (74.98 – 158.22) | MSOA E02001212 (306.31) |
| | 4 (158.23 – 249.96) | MSOA E02001210 (304.16) |
| | 5 (249.97 – 329.69) | |

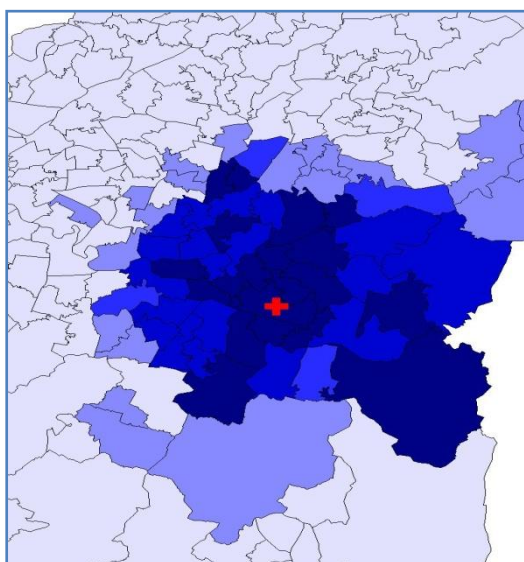
⊕ Stepping Hill ED



| | | |
|--|-------------------|------------------------|
| | 1 (0.00 – 0.64) | MSOA E02001206 (17.05) |
| | 2 (0.65 – 2.69) | MSOA E02001200 (16.39) |
| | 3 (2.70 – 7.18) | MSOA E02001217 (15.03) |
| | 4 (7.19 – 12.15) | MSOA E02001212 (14.62) |
| | 5 (12.16 – 17.05) | |

c) Sports injury: quintiles of crude rates per 1,000 population

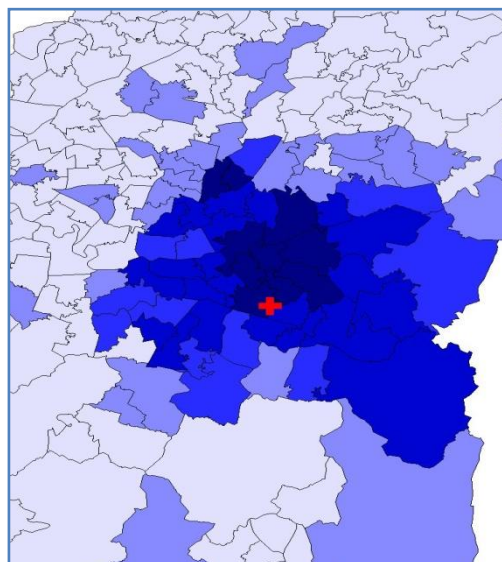
⊕ Stepping Hill ED



| | | |
|--|------------------|------------------------|
| | 1 (0.00 – 0.40) | MSOA E02001221 (11.60) |
| | 2 (0.41 – 1.67) | MSOA E02001228 (10.97) |
| | 3 (1.68 – 3.90) | MSOA E02001201 (10.91) |
| | 4 (3.91 – 8.10) | MSOA E02001210 (10.44) |
| | 5 (8.11 – 11.60) | |

d) RTC: quintiles of crude rates per 1,000 population

⊕ Stepping Hill ED



| | | |
|--|-----------------|-----------------------|
| | 1 (0.00 – 0.31) | MSOA E02001205 (9.68) |
| | 2 (0.32 – 1.05) | MSOA E02001188 (9.33) |
| | 3 (1.06 – 3.02) | MSOA E02001201 (8.31) |
| | 4 (3.03 – 6.21) | MSOA E02001210 (7.72) |
| | 5 (6.22 – 9.68) | |